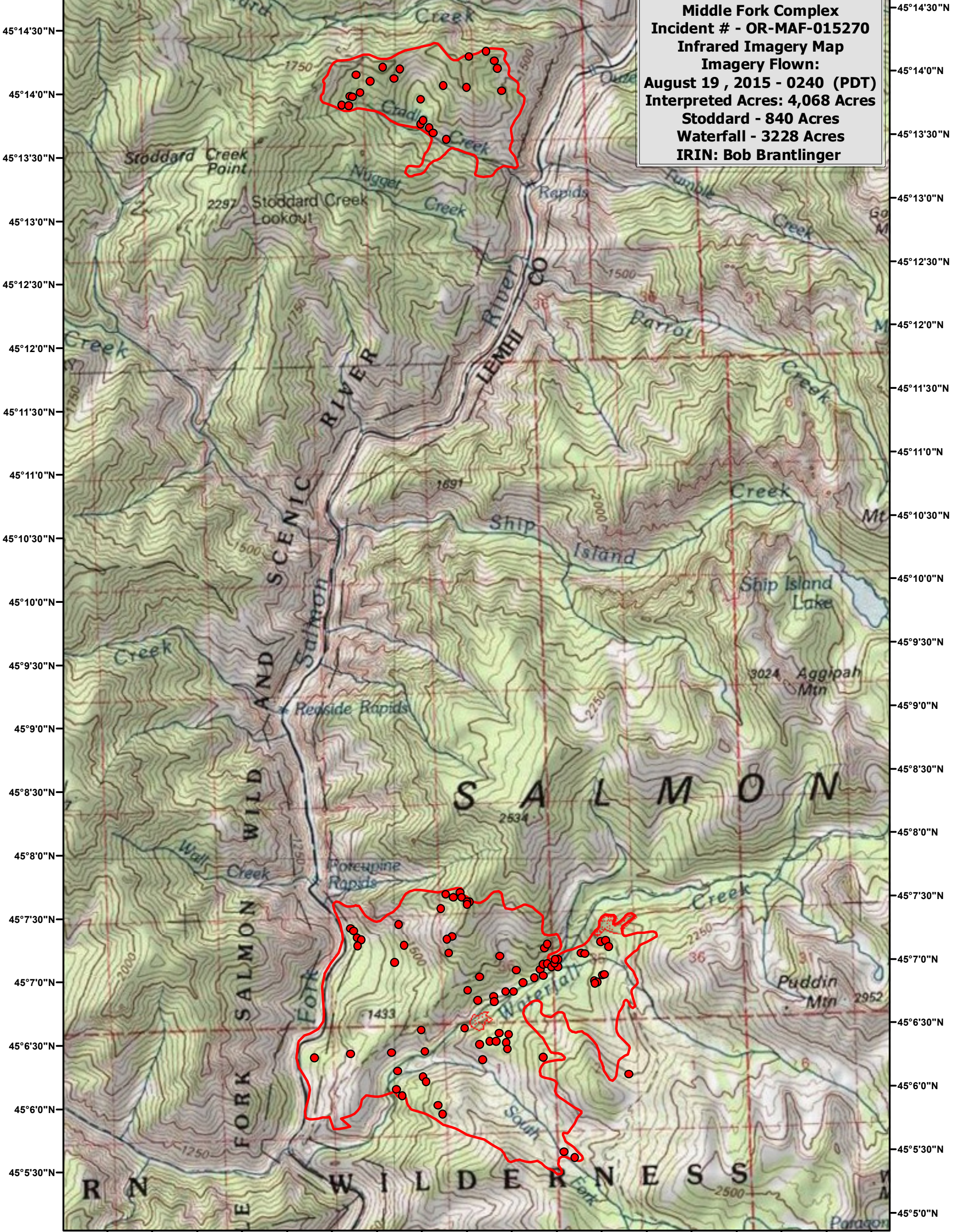



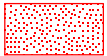


114°46'0"W 114°45'0"W 114°44'0"W 114°43'0"W 114°42'0"W 114°41'0"W 114°40'0"W 114°39'0"W 114°38'0"W 114°37'0"W



Middle Fork Complex
Incident # - OR-MAF-015270
Infrared Imagery Map
Imagery Flown:
August 19, 2015 - 0240 (PDT)
Interpreted Acres: 4,068 Acres
Stoddard - 840 Acres
Waterfall - 3228 Acres
IRIN: Bob Brantlinger

Legend

-  **Heat Perimeter**
-  **Isolated Heat Source**
-  **Intense Heat**
-  **Scattered Heat Source**

