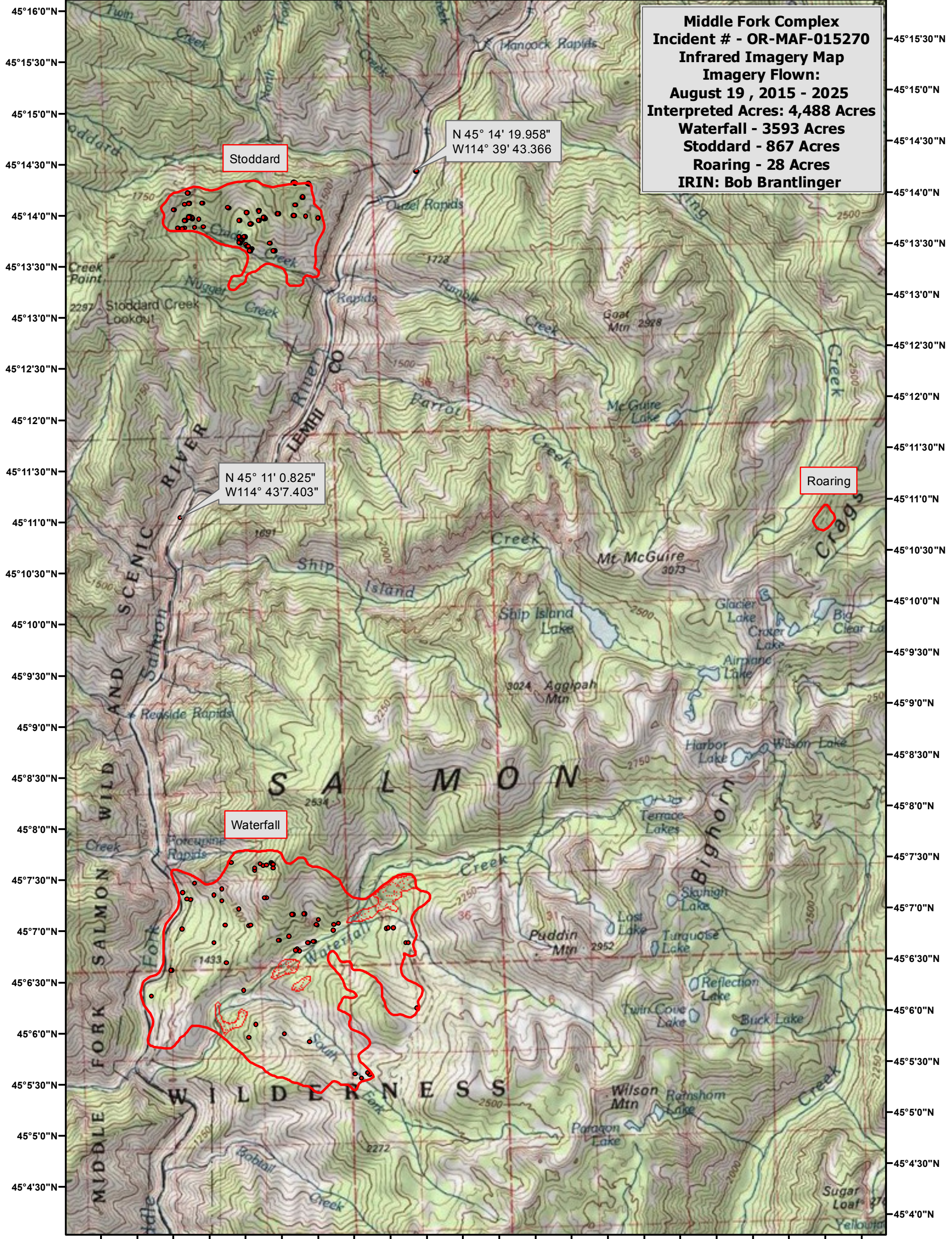


114°44'30"W 114°43'30"W 114°42'30"W 114°41'30"W 114°40'30"W 114°39'30"W 114°38'30"W 114°37'30"W 114°36'30"W 114°35'30"W 114°34'30"W 114°33'30"W






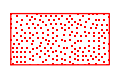
Middle Fork Complex
Incident # - OR-MAF-015270
Infrared Imagery Map
Imagery Flown:
August 19, 2015 - 2025
Interpreted Acres: 4,488 Acres
Waterfall - 3593 Acres
Stoddard - 867 Acres
Roaring - 28 Acres
IRIN: Bob Brantlinger

N 45° 14' 19.958"
 W 114° 39' 43.366"

N 45° 11' 0.825"
 W 114° 43' 7.403"

45°16'0"N
45°15'30"N
45°15'0"N
45°14'30"N
45°14'0"N
45°13'30"N
45°13'0"N
45°12'30"N
45°12'0"N
45°11'30"N
45°11'0"N
45°10'30"N
45°10'0"N
45°9'30"N
45°9'0"N
45°8'30"N
45°8'0"N
45°7'30"N
45°7'0"N
45°6'30"N
45°6'0"N
45°5'30"N
45°5'0"N
45°4'30"N
45°4'0"N

Legend

-  **Heat Perimeter**
-  **Intense Heat**
-  **Isolated Heat Source**
-  **Scattered Heat Source**

