

113°11'0"W

113°10'0"W

113°9'0"W

113°8'0"W

36°18'0"N

36°17'0"N

36°16'0"N

36°15'0"N

36°14'0"N

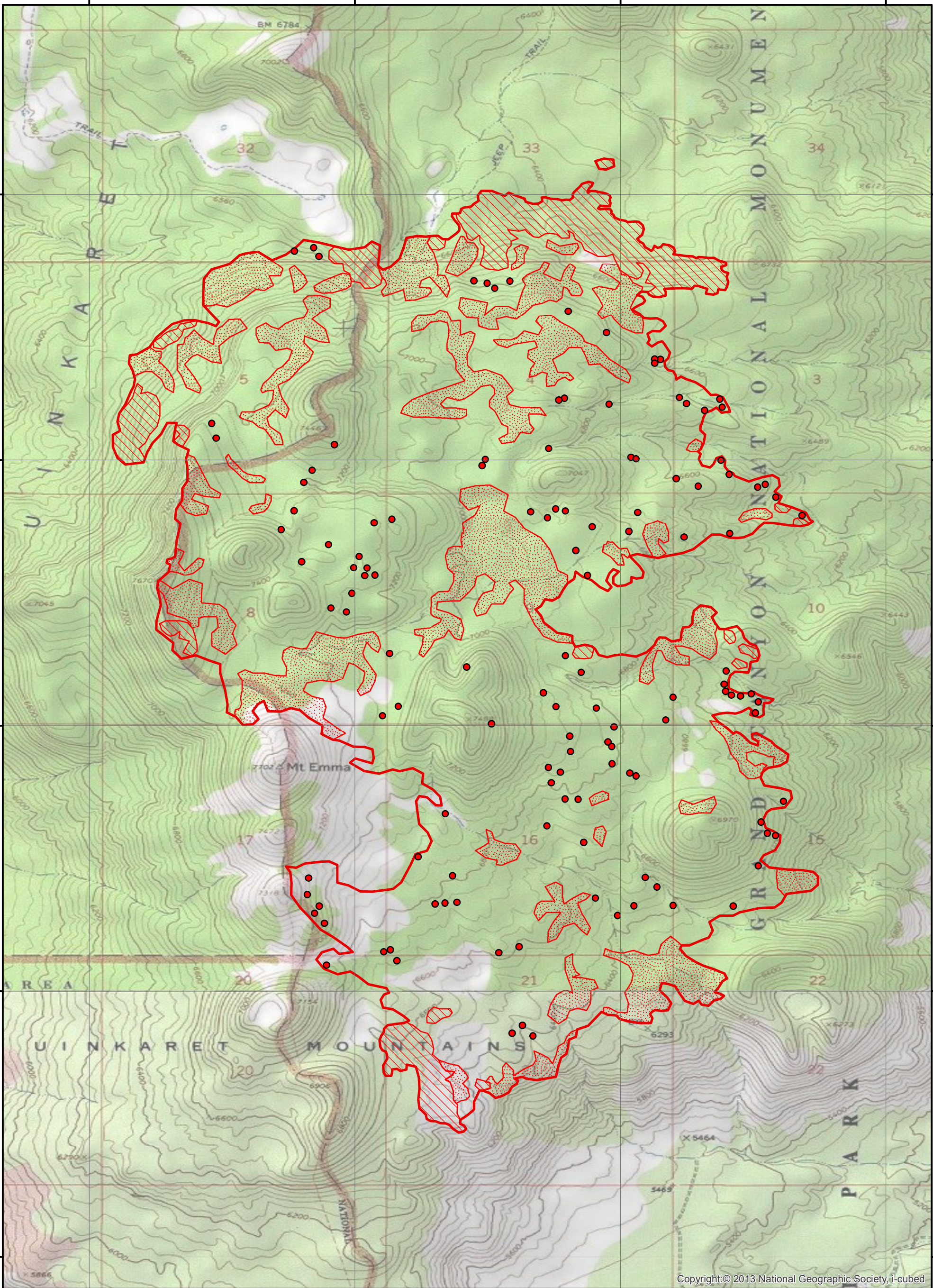
36°18'0"N

36°17'0"N





36°16'0"N

36°15'0"N

36°14'0"N

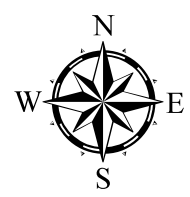


Copyright © 2013 National Geographic Society, i-cubed

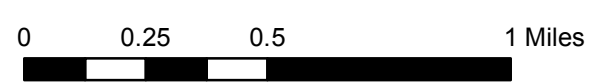
-  Heat Perimeter
-  Intense Heat Areas
-  Scattered Heat Areas
-  Isolated Heat Sources

Mount Emma Fire Infrared Heat Sources

1:25,000



IR Interpreter: Brian Monroe
 IR interpreted acres: 3,682
 Date: 06/29/2015
 Time Image received: 2228 hrs



GCS North American 1983