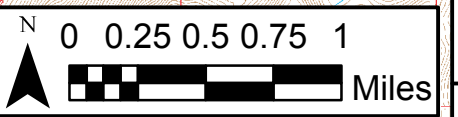
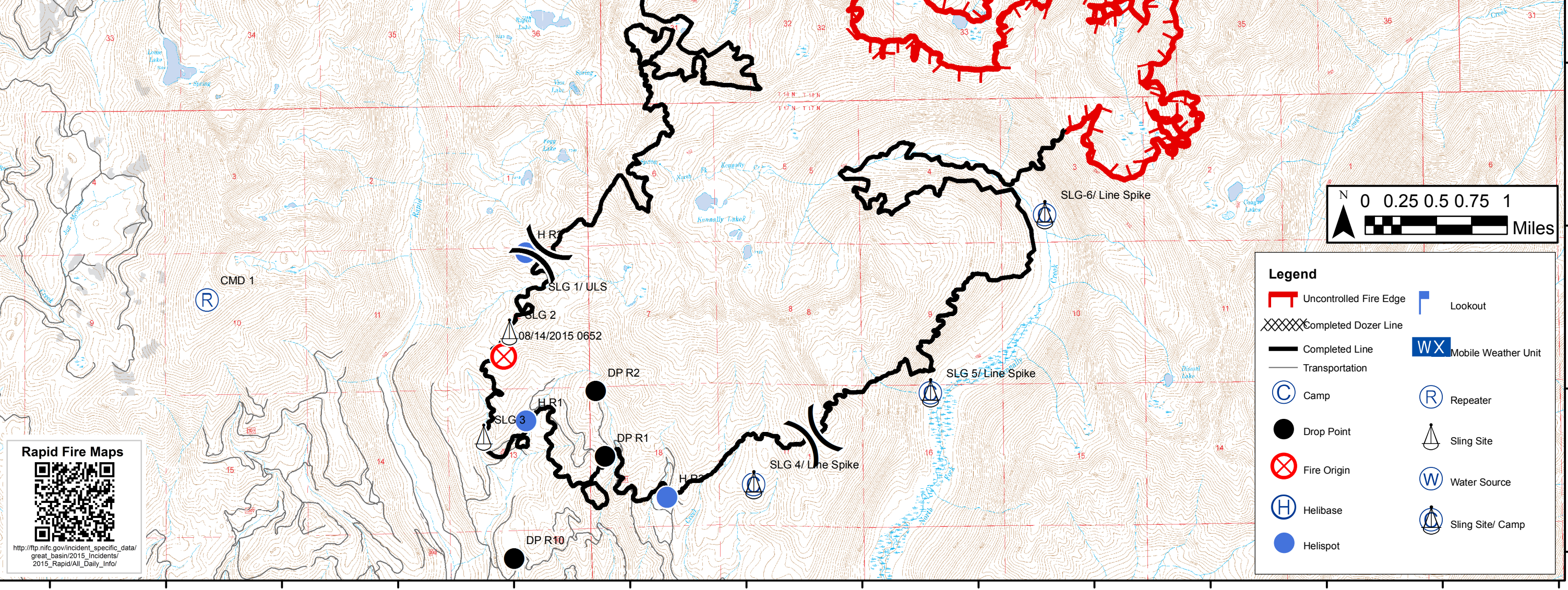


**Rapid Fire**  
**ID-SIS-000208**  
**PNJ1MA (1100)**  
**Sept. 14, 2015**  
**Day Shift**  
**Approximately 9,930 acres**  
**09/12/15 1955 hrs**  
**NAD83**  
**DOP**



Type	Name	Lat/Long
Helispot	H R1	44 48.89197 N 115 54.88381 W
Helispot	H R2	44 49.92453 N 115 54.86678 W
Helispot	Paddy Flat H	44 46.50723 N 115 56.94188 W
Sling Site	SLG 2	44 49.44036 N 115 55.01489 W
Sling Site	SLG 3	44 48.79783 N 115 55.24953 W
Sling Site/Line Spike	SLG 4/Line Spike	44 48.48436 N 115 52.93007 W
Sling Site/Line Spike	SLG 5/Line Spike	44 49.03061 N 115 51.39777 W
Water Source	Boulder Creek Dip Site	44 52.24994 N 115 55.45539 W
Helispot	H R3	44 48.41465 N 115 53.67654 W
Helispot	H R4	44 52.37307 N 115 54.67843 W



**Legend**

Uncontrolled Fire Edge	Lookout
Completed Dozer Line	Mobile Weather Unit
Completed Line	Camp
Transportation	Repeater
Camp	Sling Site
Drop Point	Water Source
Fire Origin	Sling Site/ Camp
Helibase	Sling Site/ Camp
Helispot	

**Rapid Fire Maps**

[http://ftp.nifc.gov/incident\\_specific\\_data/great\\_basin/2015\\_incidents/2015\\_Rapid/All\\_Daily\\_Info/](http://ftp.nifc.gov/incident_specific_data/great_basin/2015_incidents/2015_Rapid/All_Daily_Info/)