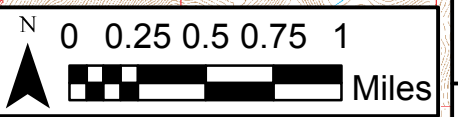
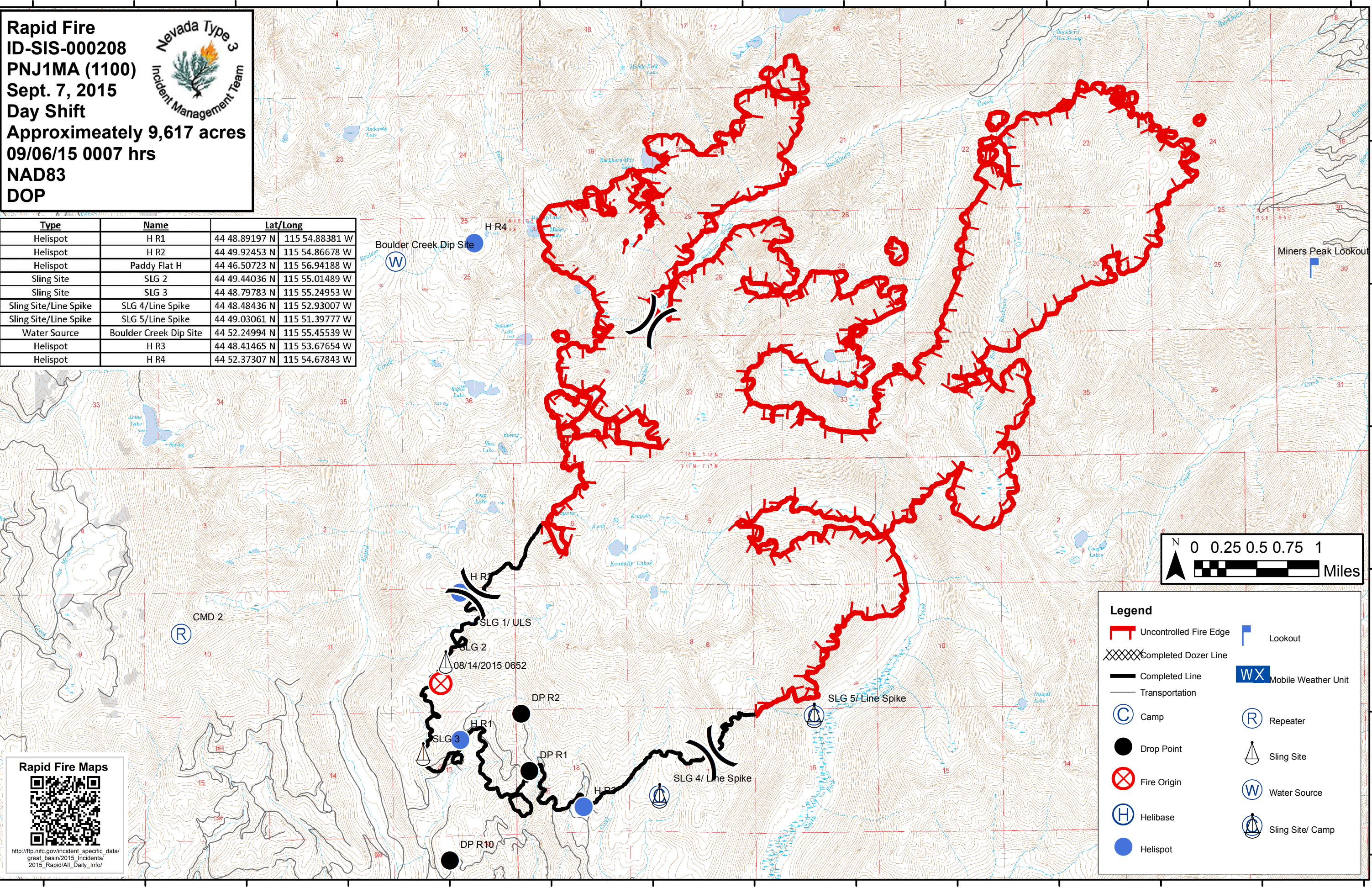


Rapid Fire
ID-SIS-000208
PNJ1MA (1100)
Sept. 7, 2015
Day Shift
Approximately 9,617 acres
09/06/15 0007 hrs
NAD83
DOP



Type	Name	Lat/Long
Helispot	H R1	44 48.89197 N 115 54.88381 W
Helispot	H R2	44 49.92453 N 115 54.86678 W
Helispot	Paddy Flat H	44 46.50723 N 115 56.94188 W
Sling Site	SLG 2	44 49.44036 N 115 55.01489 W
Sling Site	SLG 3	44 48.79783 N 115 55.24953 W
Sling Site/Line Spike	SLG 4/Line Spike	44 48.48436 N 115 52.93007 W
Sling Site/Line Spike	SLG 5/Line Spike	44 49.03061 N 115 51.39777 W
Water Source	Boulder Creek Dip Site	44 52.24994 N 115 55.45539 W
Helispot	H R3	44 48.41465 N 115 53.67654 W
Helispot	H R4	44 52.37307 N 115 54.67843 W



Legend

- Uncontrolled Fire Edge
- Completed Dozer Line
- Completed Line
- Transportation
- Camp
- Drop Point
- Fire Origin
- Helibase
- Helispot
- Lookout
- Mobile Weather Unit
- Repeater
- Sling Site
- Water Source
- Sling Site/ Camp

Rapid Fire Maps

http://ftp.nifc.gov/incident_specific_data/great_basin/2015_incidents/2015_Rapid/All_Daily_Info/