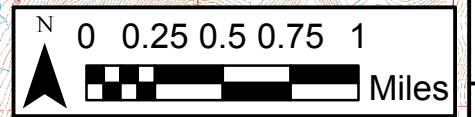
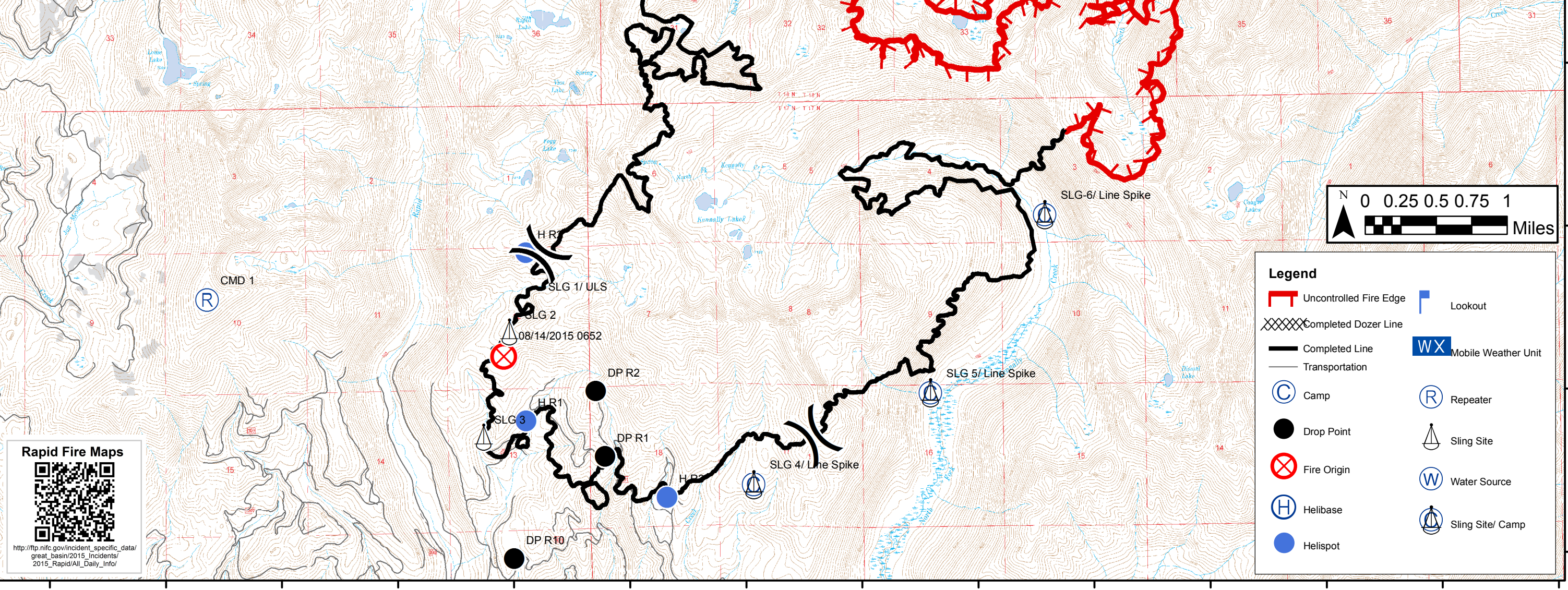


115°59'W 115°58'W 115°57'W 115°56'W 115°55'W 115°54'W 115°53'W 115°52'W 115°51'W 115°50'W 115°49'W 115°48'W 115°47'W 115°46'W

Rapid Fire
ID-SIS-000208
PNJ1MA (1100)
Sept. 11, 2015
Day Shift
Approximately 9,624 acres
09/09/15 2213 hrs
NAD83
DOP



Type	Name	Lat/Long
Helispot	H R1	44 48.89197 N 115 54.88381 W
Helispot	H R2	44 49.92453 N 115 54.86678 W
Helispot	Paddy Flat H	44 46.50723 N 115 56.94188 W
Sling Site	SLG 2	44 49.44036 N 115 55.01489 W
Sling Site	SLG 3	44 48.79783 N 115 55.24953 W
Sling Site/Line Spike	SLG 4/Line Spike	44 48.48436 N 115 52.93007 W
Sling Site/Line Spike	SLG 5/Line Spike	44 49.03061 N 115 51.39777 W
Water Source	Boulder Creek Dip Site	44 52.24994 N 115 55.45539 W
Helispot	H R3	44 48.41465 N 115 53.67654 W
Helispot	H R4	44 52.37307 N 115 54.67843 W



Legend

Uncontrolled Fire Edge	Lookout
Completed Dozer Line	Mobile Weather Unit
Completed Line	Camp
Transportation	Repeater
Camp	Sling Site
Drop Point	Water Source
Fire Origin	Sling Site/ Camp
Helibase	
Helispot	

Rapid Fire Maps

http://ftp.nifc.gov/incident_specific_data/great_basin/2015_incidents/2015_Rapid/All_Daily_Info/

115°59'W 115°58'W 115°57'W 115°56'W 115°55'W 115°54'W 115°53'W 115°52'W 115°51'W 115°50'W 115°49'W 115°48'W 115°47'W 115°46'W

44°54'N
44°53'N
44°52'N
44°51'N
44°50'N
44°49'N
44°48'N

44°54'N
44°53'N
44°52'N
44°51'N
44°50'N
44°49'N
44°48'N