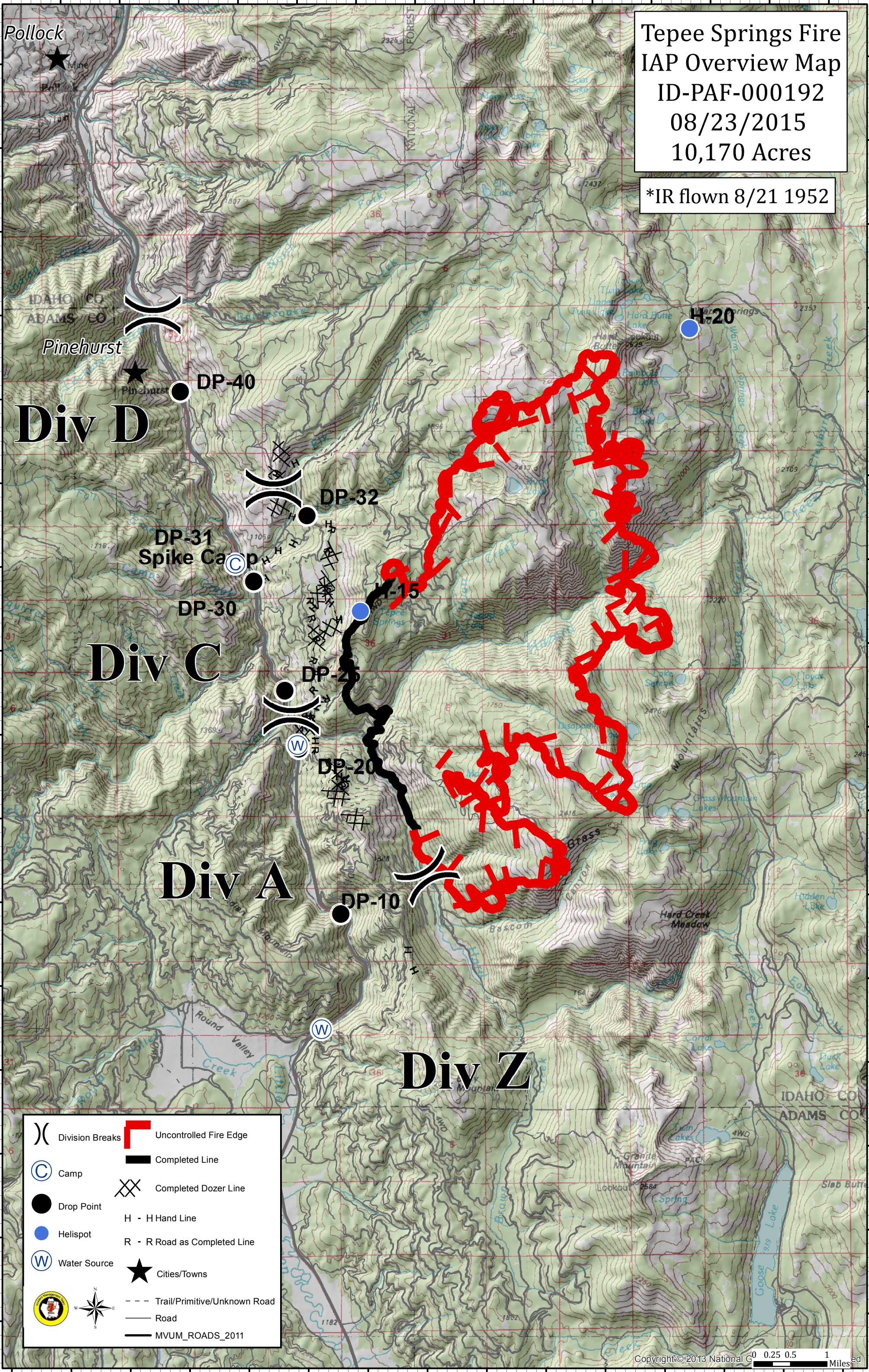


**Tepee Springs Fire
IAP Overview Map
ID-PAF-000192
08/23/2015
10,170 Acres**

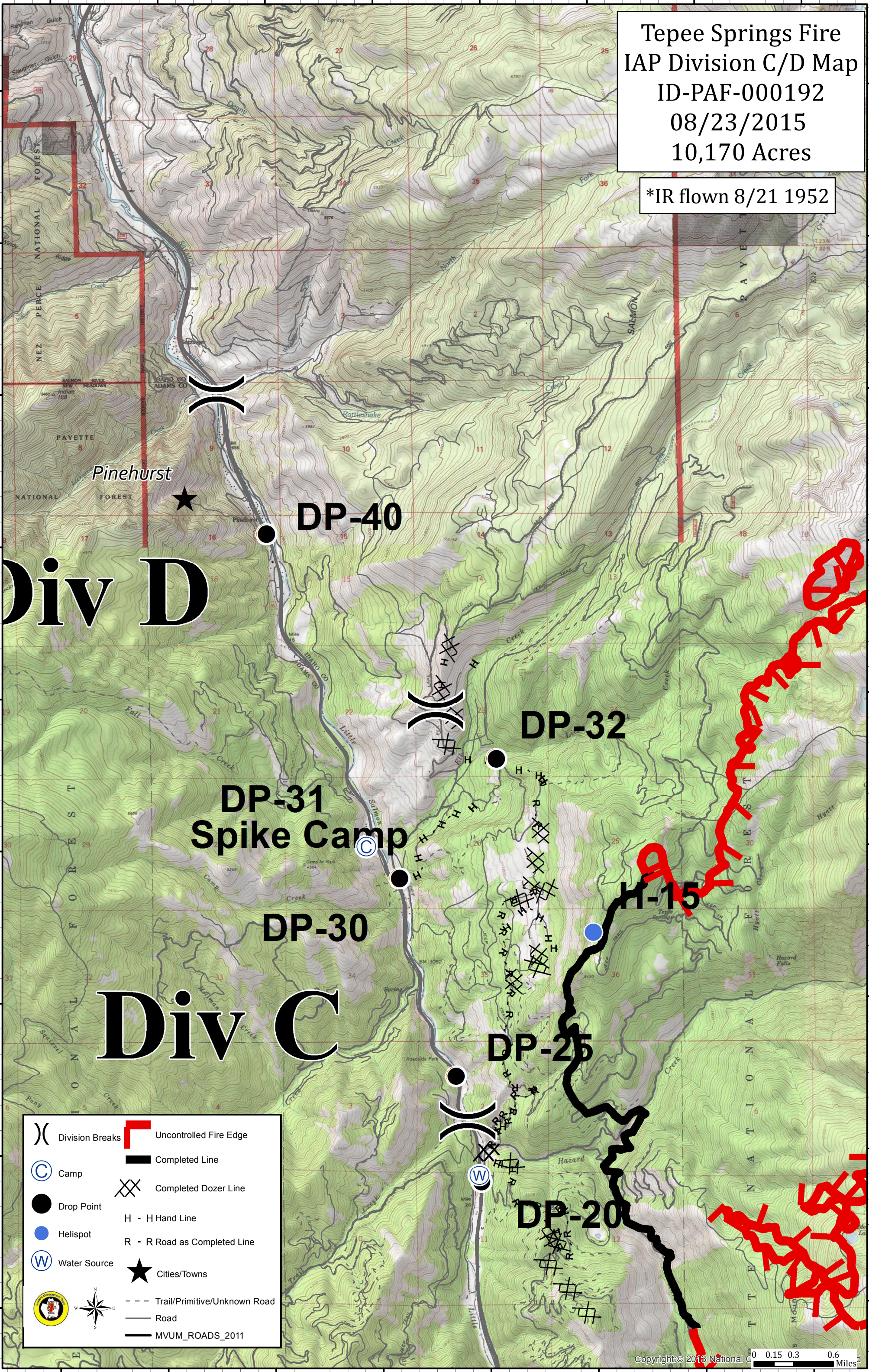
***IR flown 8/21 1952**



- | | | | |
|-----|-----------------|-----|------------------------------|
| () | Division Breaks | ┌ | Uncontrolled Fire Edge |
| (C) | Camp | — | Completed Line |
| ● | Drop Point | ⊗ | Completed Dozer Line |
| ● | Helispot | H | H - H Hand Line |
| (W) | Water Source | R | R - R Road as Completed Line |
| ★ | Cities/Towns | --- | Trail/Primitive/Unknown Road |
| 🚒 | | — | Road |
| 🚒 | | — | MVUM_ROADS_2011 |

Tepee Springs Fire
 IAP Division C/D Map
 ID-PAF-000192
 08/23/2015
 10,170 Acres

*IR flown 8/21 1952



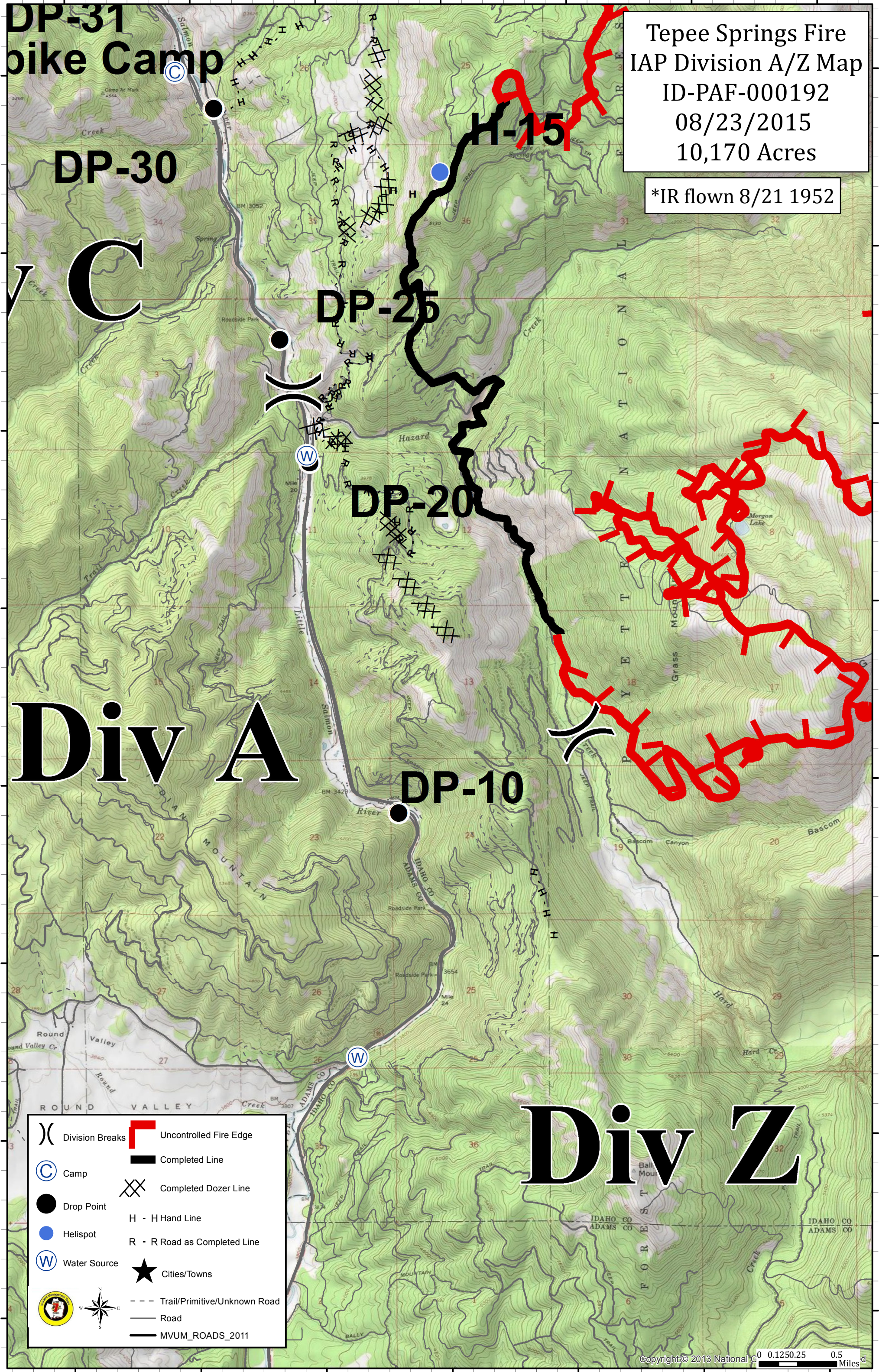
Div D

Div C

- | | | | |
|--------|-----------------|-------|------------------------------|
| () | Division Breaks | ┌ | Uncontrolled Fire Edge |
| (C) | Camp | — | Completed Line |
| ● | Drop Point | ⊗ | Completed Dozer Line |
| ● | Helispot | H - H | H - H Hand Line |
| (W) | Water Source | R - R | R - R Road as Completed Line |
| (Logo) | | ★ | Cities/Towns |
| | | --- | Trail/Primitive/Unknown Road |
| | | — | Road |
| | | — | MVUM_ROADS_2011 |

Tepee Springs Fire
 IAP Division A/Z Map
 ID-PAF-000192
 08/23/2015
 10,170 Acres

*IR flown 8/21 1952



()	Division Breaks	█	Uncontrolled Fire Edge
Ⓒ	Camp	█	Completed Line
●	Drop Point	⊗	Completed Dozer Line
●	Helispot	H - H	Hand Line
⒱	Water Source	R - R	Road as Completed Line
★	Cities/Towns	---	Trail/Primitive/Unknown Road
⊙		—	Road
		—	MVUM_ROADS_2011