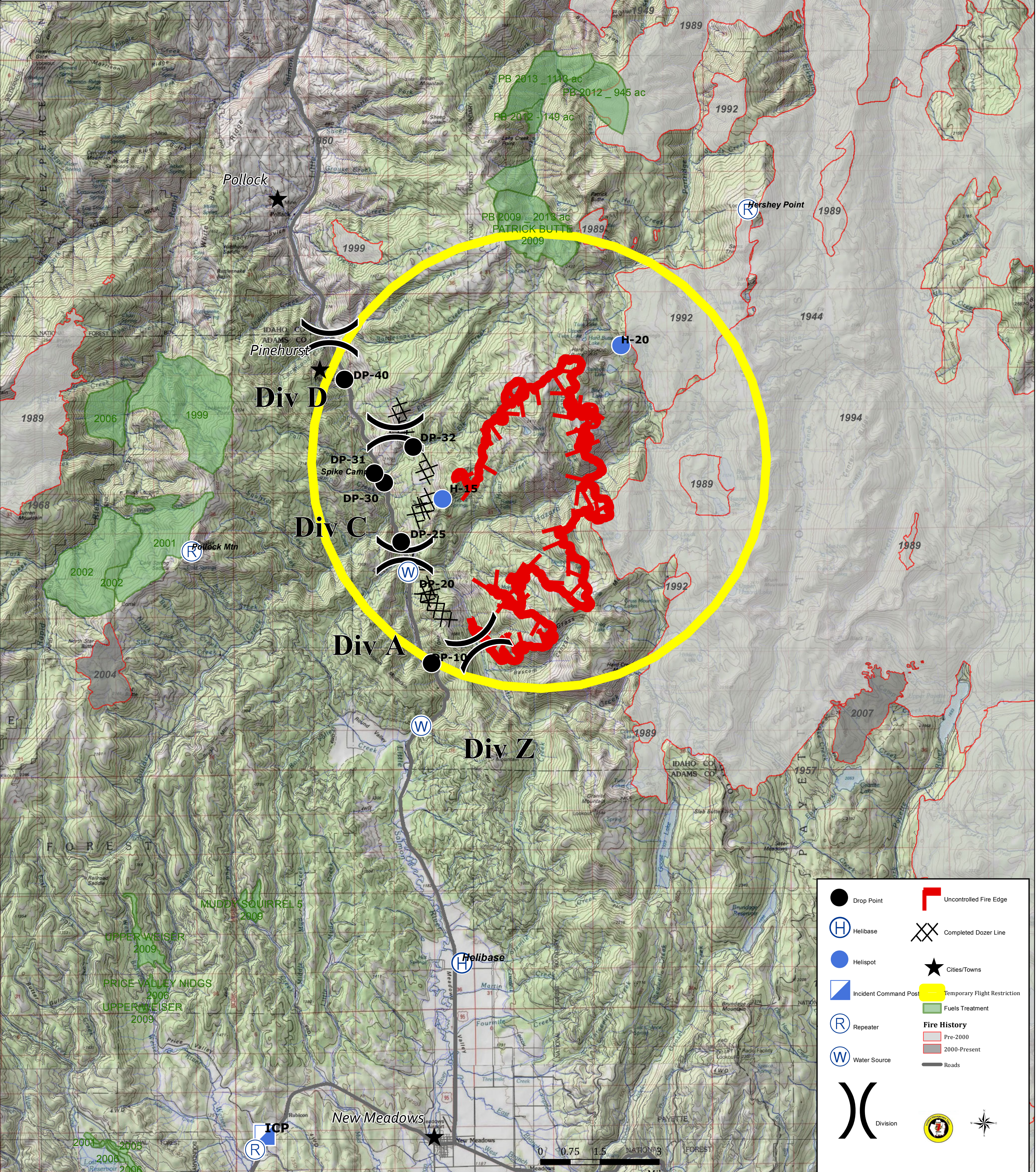


**Tepee Springs Fire**  
**Air Ops Map**  
**ID-PAF-000192**  
**08/23/2015**  
**10,170 Acres**



	Drop Point		Uncontrolled Fire Edge
	Helibase		Completed Dozer Line
	Helispot		Cities/Towns
	Incident Command Post		Temporary Flight Restriction
	Repeater		Fuels Treatment
	Water Source		Fire History
	Roads		Pre-2000
	Roads		2000-Present
	Division		