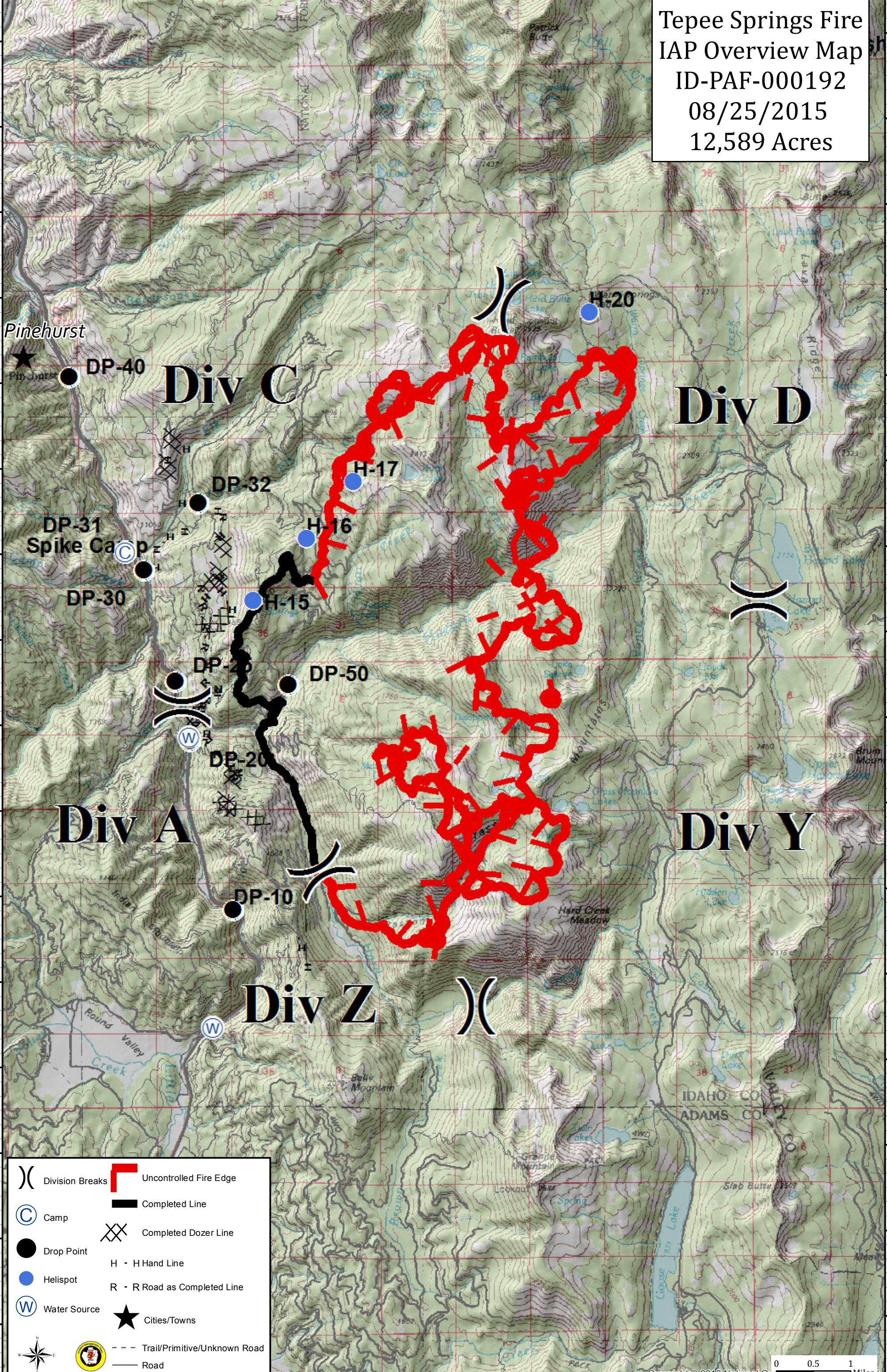


Tepee Springs Fire
 IAP Overview Map
 ID-PAF-000192
 08/25/2015
 12,589 Acres



- | | | | |
|--|-----------------|--|------------------------------|
| | Division Breaks | | Uncontrolled Fire Edge |
| | Camp | | Completed Line |
| | Drop Point | | Completed Dozer Line |
| | Helispot | | H - H Hand Line |
| | Water Source | | R - R Road as Completed Line |
| | Cities/Towns | | Trail/Primitive/Unknown Road |
| | | | Road |

Tepee Springs Fire
 IAP Division C Map
 ID-PAF-000192
 08/25/2015
 12,589 Acres

Div C

DP-40

1 Camp

-30

-20

DP-32

DP-25

DP-50

H-17

H-16

H-15

	Division Breaks		Uncontrolled Fire Edge
	Camp		Completed Line
	Drop Point		Completed Dozer Line
	Helispot		H - H Hand Line
	Water Source		R - R Road as Completed Line
	Cities/Towns		Trail/Primitive/Unknown Road
	Road		

0 0.275 0.55 Miles

Copyright © 2013 National Ge

Tepee Springs Fire
 IAP Division A/Z Map
 ID-PAF-000192
 08/25/2015
 12,589 Acres

Div A

Div Z

DP-25

DP-5

DP-20

DP-10

	Division Breaks		Uncontrolled Fire Edge
	Camp		Completed Line
	Drop Point		Completed Dozer Line
	Helispot		H - H Hand Line
	Water Source		R - R Road as Completed Line
			Cities/Towns
			Trail/Primitive/Unknown Road
			Road

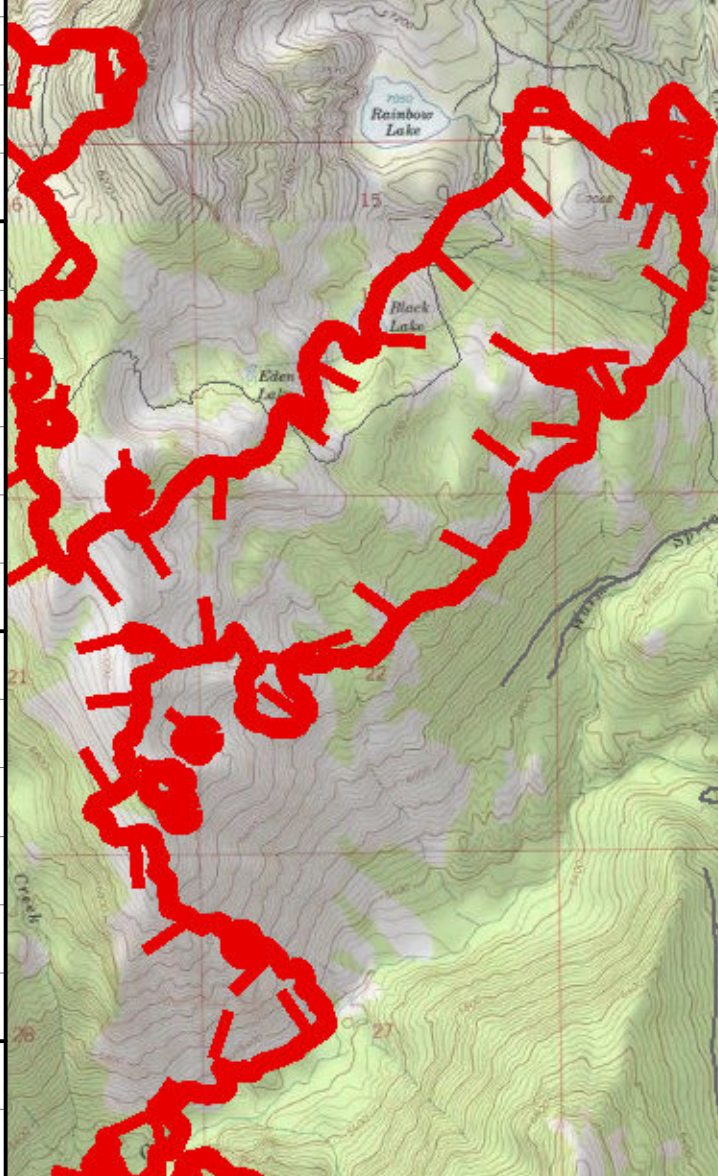
0 0.25 0.5 Miles

Copyright © 2013 National Geographic

Tepee Springs Fire
IAP Division D Map
ID-PAF-000192
08/25/2015
12,589 Acres

H-20

Div D

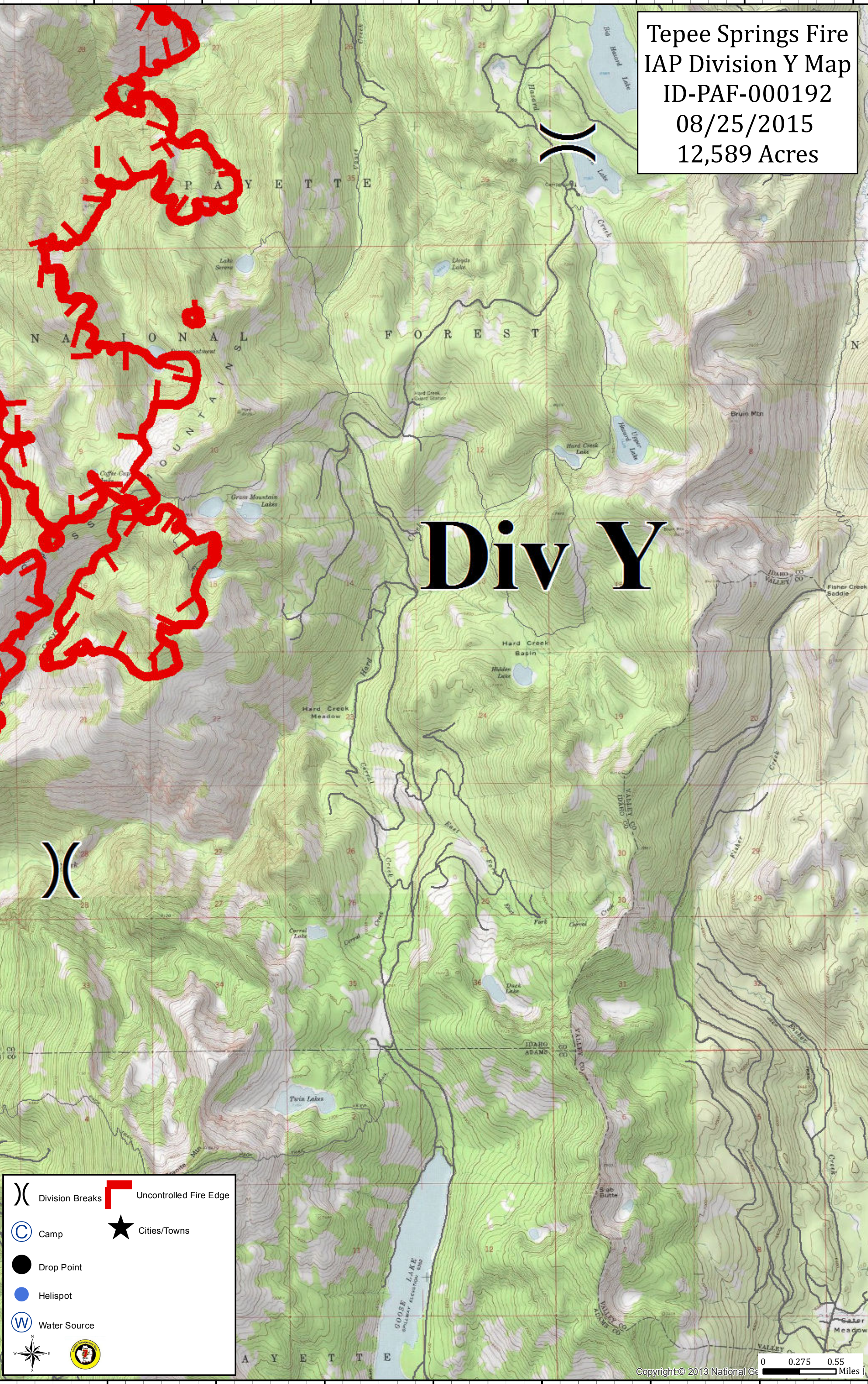


	Division Breaks		Uncontrolled Fire Edge
	Camp		Cities/Towns
	Drop Point		
	Helispot		
	Water Source		

Tepee Springs Fire
IAP Division Y Map
ID-PAF-000192
08/25/2015
12,589 Acres

Div Y



	Division Breaks		Uncontrolled Fire Edge
	Camp		Cities/Towns
	Drop Point		
	Helispot		
	Water Source		

0 0.275 0.55 Miles