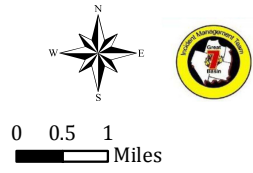
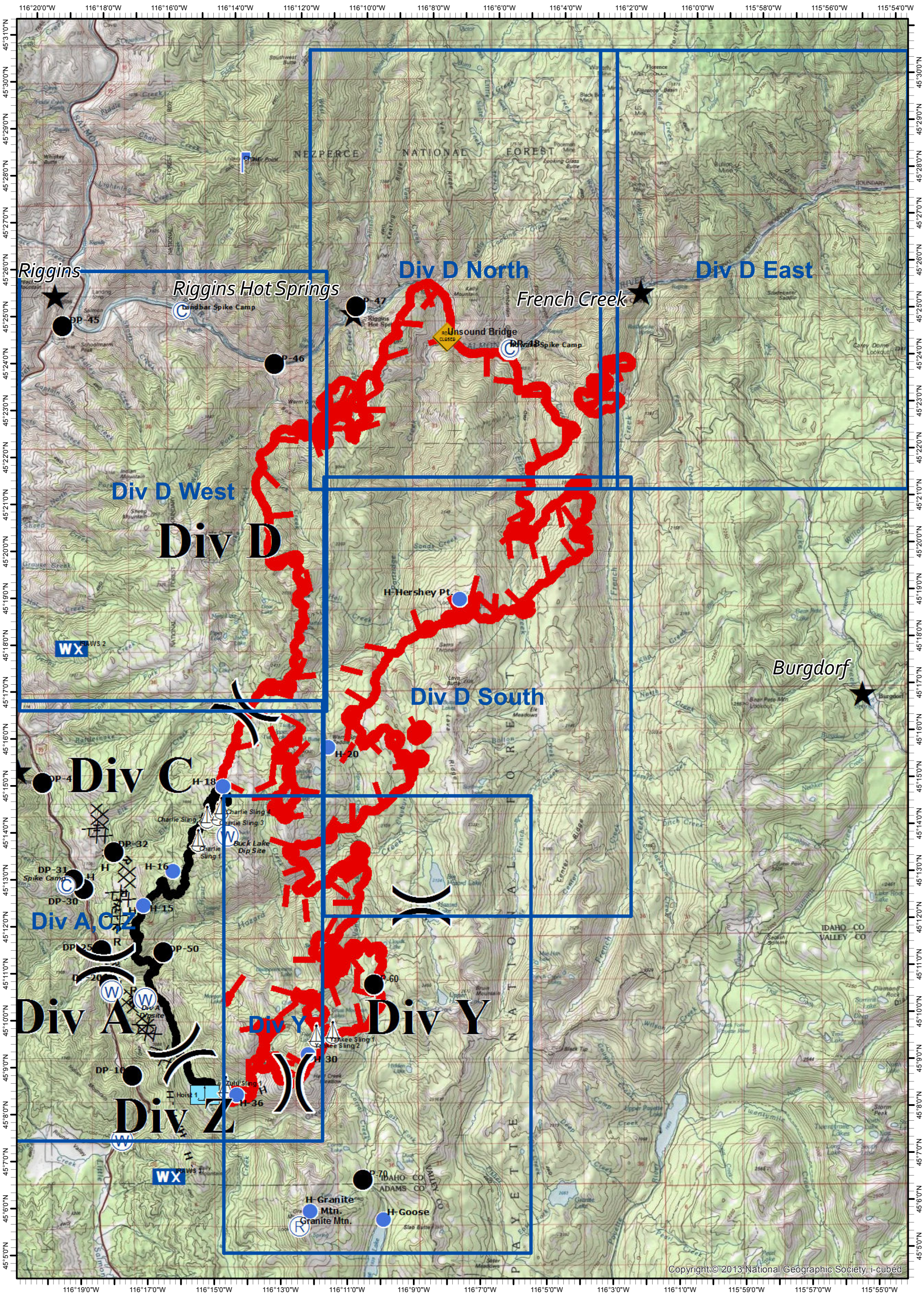


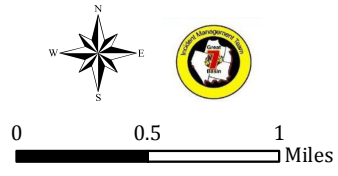
Tepee Springs Fire
IAP Overview Map
ID-PAF-000192
08/29/2015
48,568 Acres



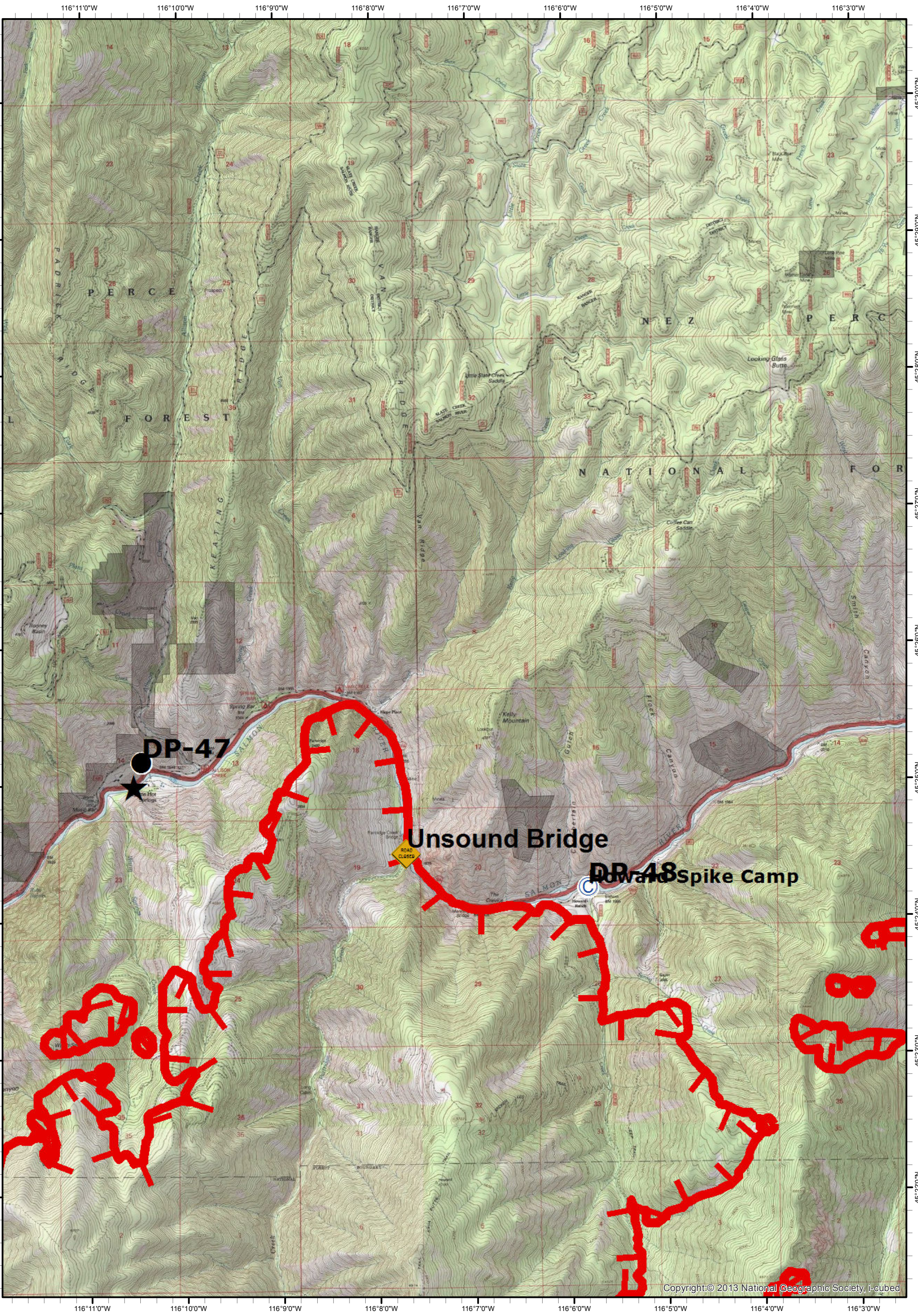
- () Division Breaks
- (C) Camp
- Drop Point
- 🚒 Lookout
- Helispot
- 🚎 Sling Site
- 🚎 Hoist Site
- 🚎 Water Source
- WX Mobile Weather Unit
- 🚧 Unsound Bridge
- ★ Cities/Towns
- 🔴 Uncontrolled Fire Edge
- ▬ Completed Line
- ⊗⊗ Completed Dozer Line
- H - H - Hand Line
- R - R - Road as Completed Line



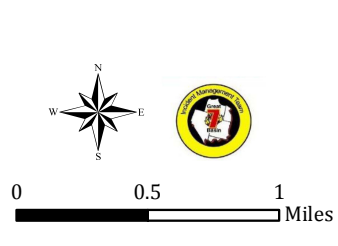
Tepee Springs Fire
 IAP Div D North
 ID-PAF-000192
 08/29/2015
 48,568 Acres



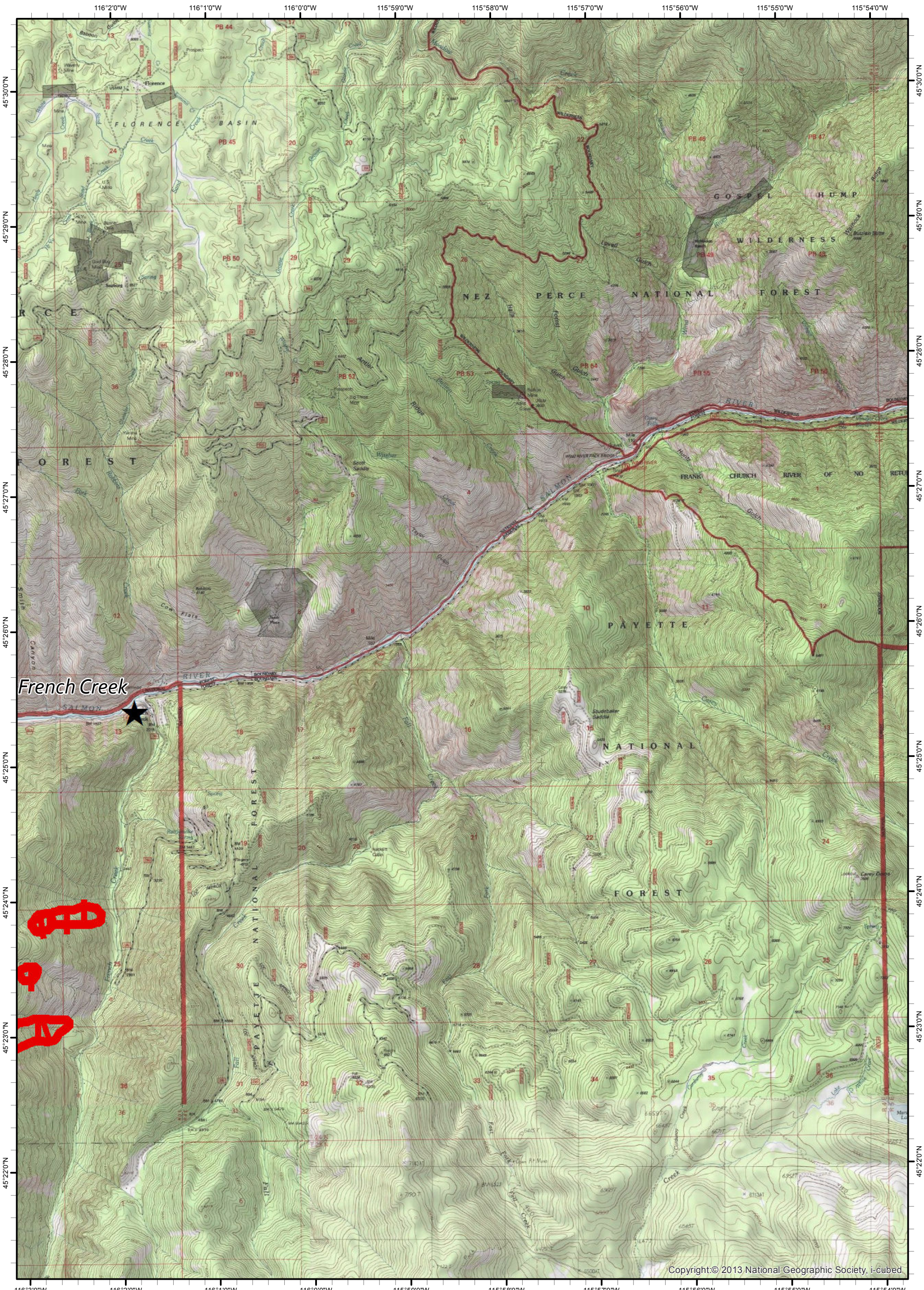
- () Division Breaks
- Helispot
- WX Mobile Weather Unit
- ┌ Uncontrolled Fire Edge
- ⊙ Camp
- ⚙ Sling Site
- ⚙ Hoist Site
- ⚙ Completed Line
- Drop Point
- ⚙ Hoist Site
- ⚙ Completed Dozer Line
- ⚙ Lookout
- ⚙ Water Source
- ★ Cities/Towns
- H - H - Hand Line
- R - R - Road as Completed Line
- ⚠ Road Closed
- ⚠ Unsound Bridge



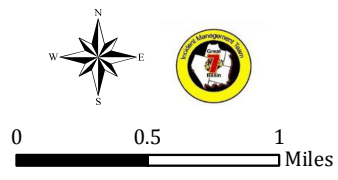
Tepee Springs Fire
 IAP Div D East
 ID-PAF-000192
 08/29/2015
 48,568 Acres



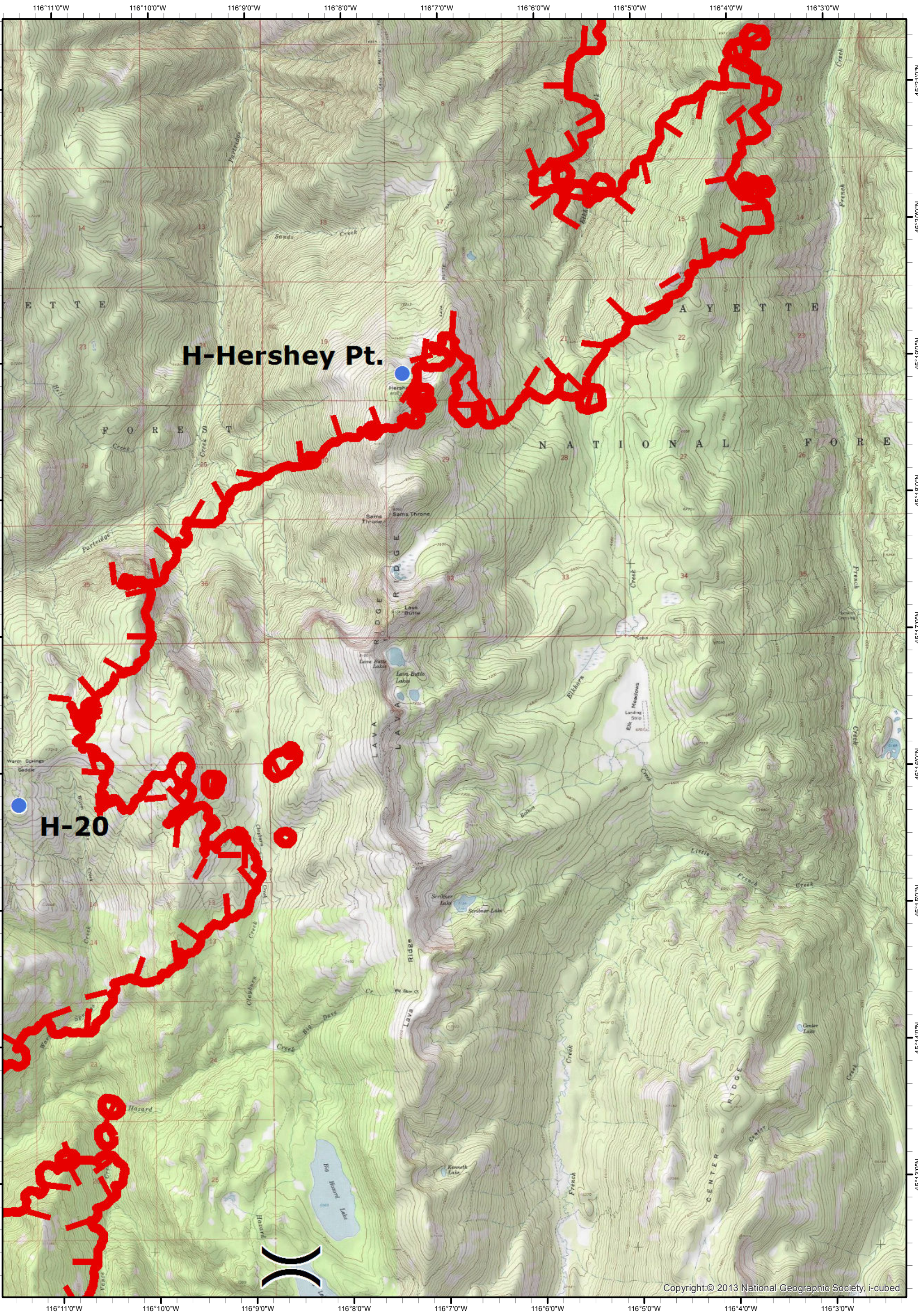
- (X) Division Breaks
- (C) Camp
- Drop Point
- └ Lookout
- Helispot
- ⚓ Sling Site
- ⚙ Hoist Site
- W Water Source
- WX Mobile Weather Unit
- ⚠ Road Closed
- ★ Cities/Towns
- ┌ Uncontrolled Fire Edge
- ▬ Completed Line
- ⊗ Completed Dozer Line
- H - H - Hand Line
- R - R - Road as Completed Line



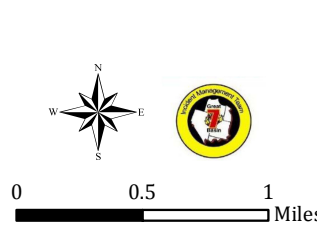
Tepee Springs Fire
 IAP Div D South
 ID-PAF-000192
 08/29/2015
 48,568 Acres



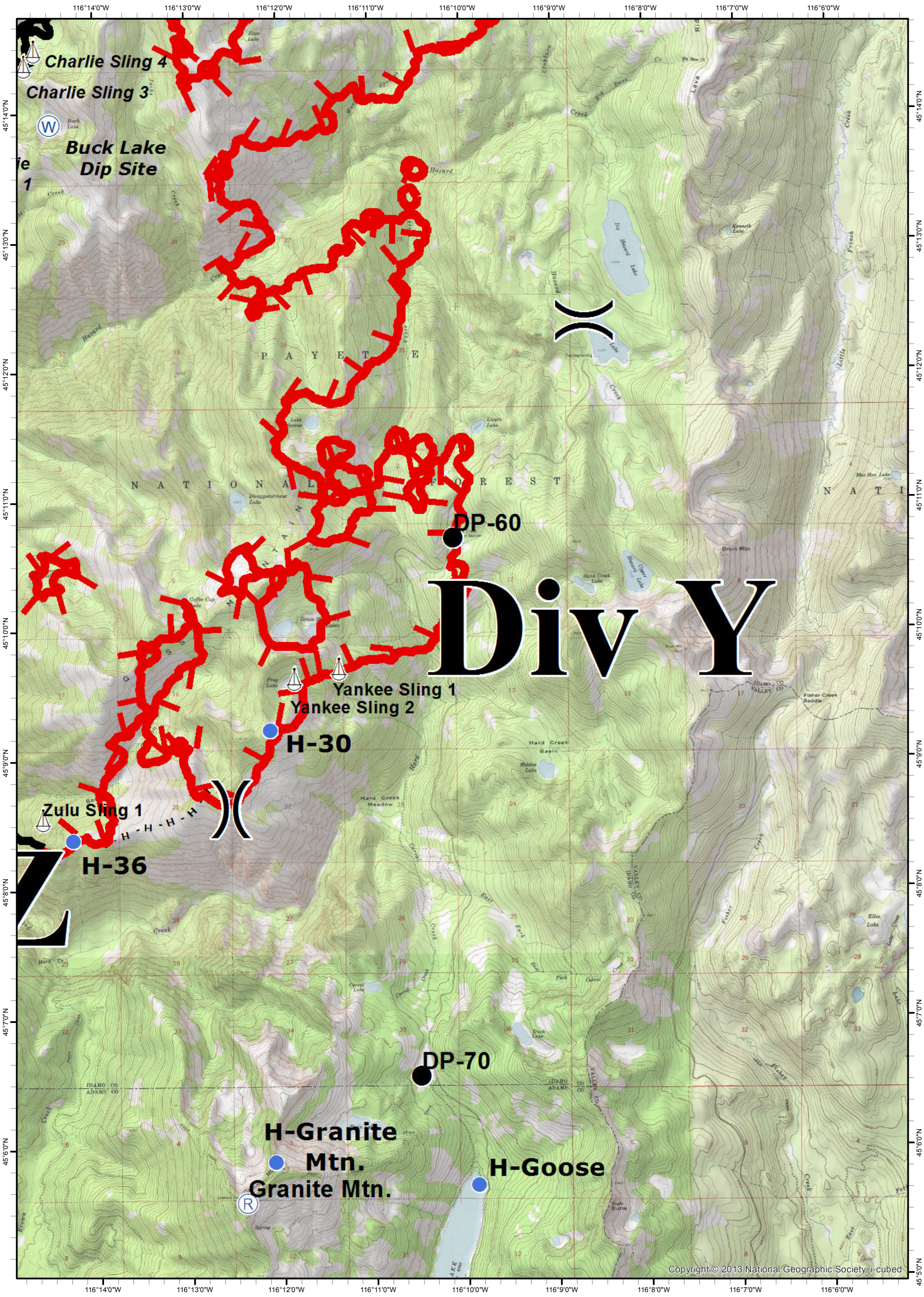
- | | | | |
|---------------------|----------------|------------------------|--------------------------------|
| () Division Breaks | ● Helispot | WX Mobile Weather Unit | Uncontrolled Fire Edge |
| ⊙ Camp | ⚓ Sling Site | ⚠ Unsound Bridge | Completed Line |
| ● Drop Point | ⚙ Hoist Site | ★ Cities/Towns | ⊗ Completed Dozer Line |
| 🚒 Lookout | Ⓜ Water Source | H - H - Hand Line | R - R - Road as Completed Line |



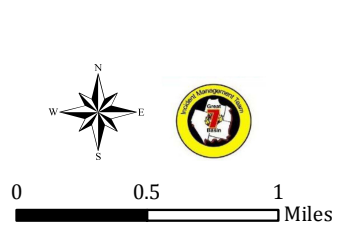
Tepee Springs Fire
 IAP Div Y
 ID-PAF-000192
 08/29/2015
 48,568 Acres



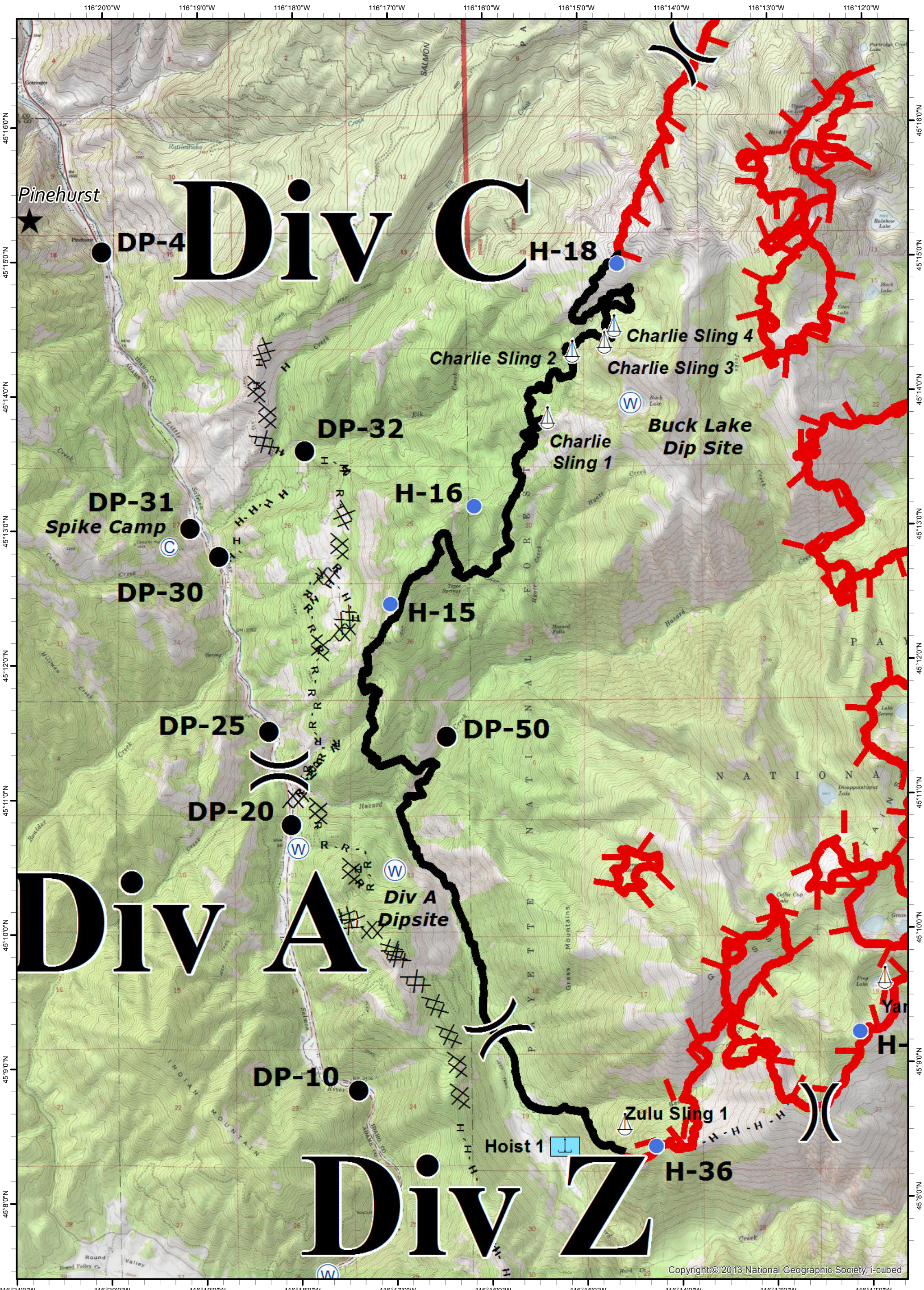
- () Division Breaks
- (C) Camp
- Drop Point
- └ Lookout
- Helispot
- ⚓ Sling Site
- ⚓ Hoist Site
- ⊙ Water Source
- WX Mobile Weather Unit
- ⚠ Unsound Bridge
- ★ Cities/Towns
- ┌ Uncontrolled Fire Edge
- ▬ Completed Line
- ⊗⊗ Completed Dozer Line
- H - H - Hand Line
- R - R - Road as Completed Line



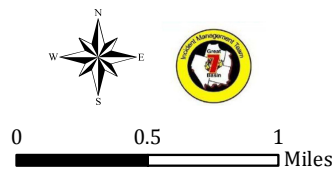
Tepee Springs Fire
 IAP Div A,C,Z
 ID-PAF-000192
 08/29/2015
 48,568 Acres



- () Division Breaks
- (C) Camp
- Drop Point
- └ Lookout
- Helispot
- ⚓ Sling Site
- ⚙ Hoist Site
- Ⓜ Water Source
- WX Mobile Weather Unit
- ⚠ Unsound Bridge
- ★ Cities/Towns
- ▬ Uncontrolled Fire Edge
- ▬ Completed Line
- ⊗⊗ Completed Dozer Line
- H · H · Hand Line
- R · R · Road as Completed Line



Tepee Springs Fire
 IAP Div D West
 ID-PAF-000192
 08/29/2015
 48,568 Acres



- () Division Breaks
- (C) Camp
- Drop Point
- └ Lookout
- Helispot
- ⚓ Sling Site
- 🚢 Hoist Site
- Ⓜ Water Source
- WX Mobile Weather Unit
- 🚧 Unsound Bridge
- ★ Cities/Towns
- ▬ Uncontrolled Fire Edge
- ▬ Completed Line
- ⊗⊗ Completed Dozer Line
- H - H - Hand Line
- R - R - Road as Completed Line

