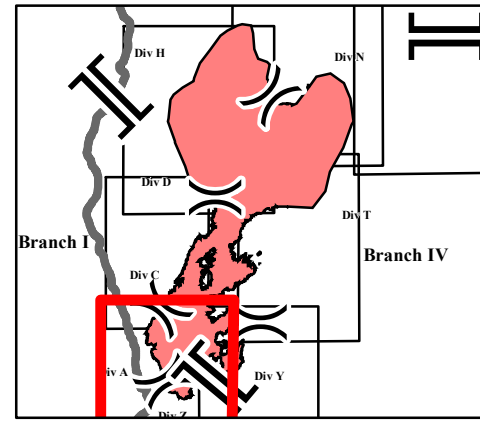
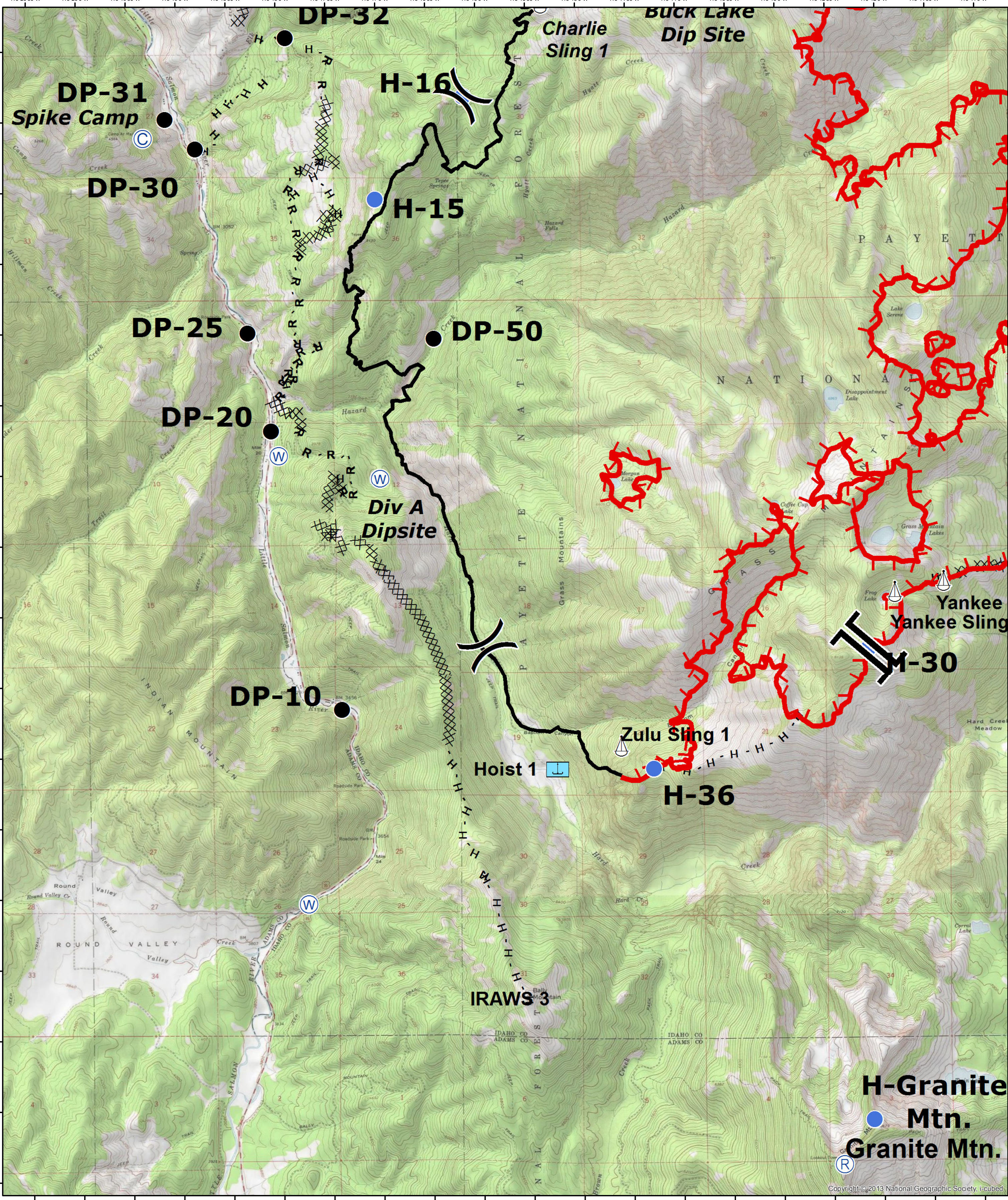


**Tepee Springs Fire**  
**IDPAF-000192**  
**8/30/2015**  
**Tile Name:**  
**Divison A/Z**

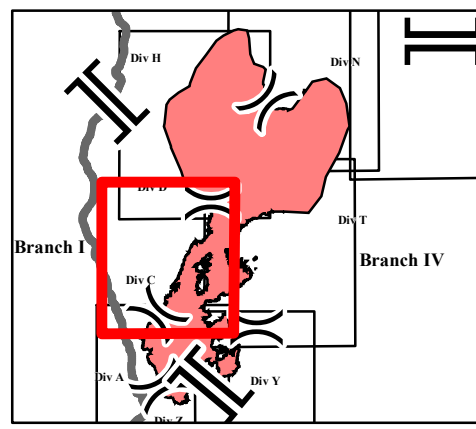
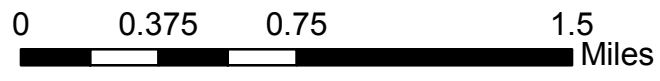
0 0.375 0.75 1.5 Miles



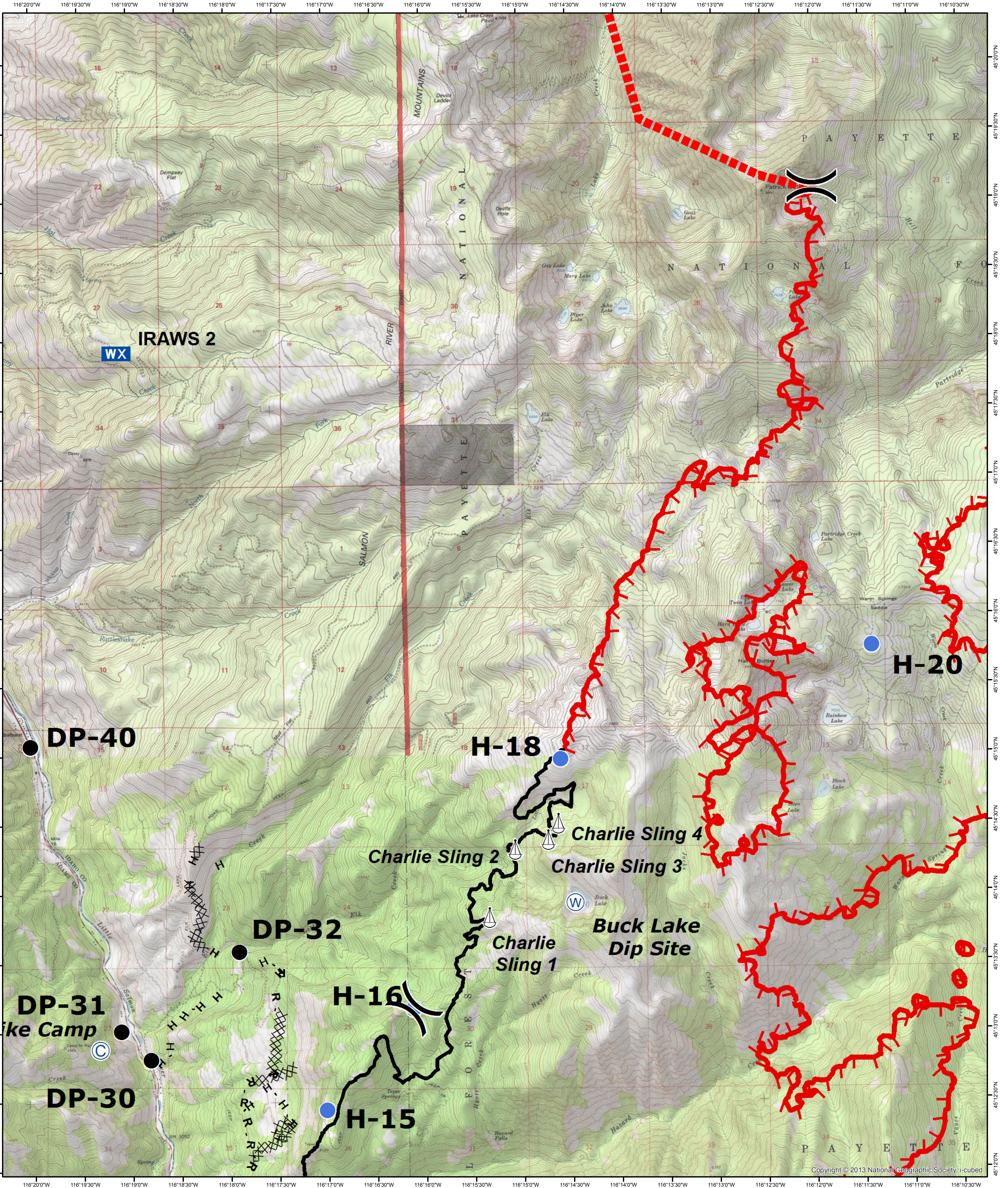
Division Break	Camp	Mobile Weather Unit	Estimated Perimeter
Branch Break	Drop Point	Repeater	Uncontrolled Fire Edge
Unsound Bridge	Helibase	Sling Site	Completed Dozer Line
Hoist	Helispot	Completed Line	H - Hand Line
Lookout	Incident Command Post	Water Source	R - Road as Completed Line



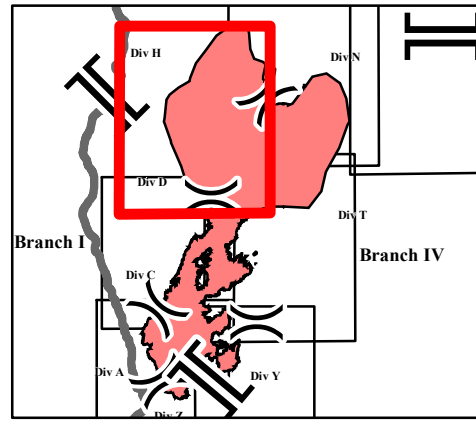
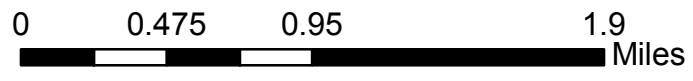
**Tepee Springs Fire**  
**IDPAF-000192**  
**8/30/2015**  
**Tile Name:**  
**Divison C**



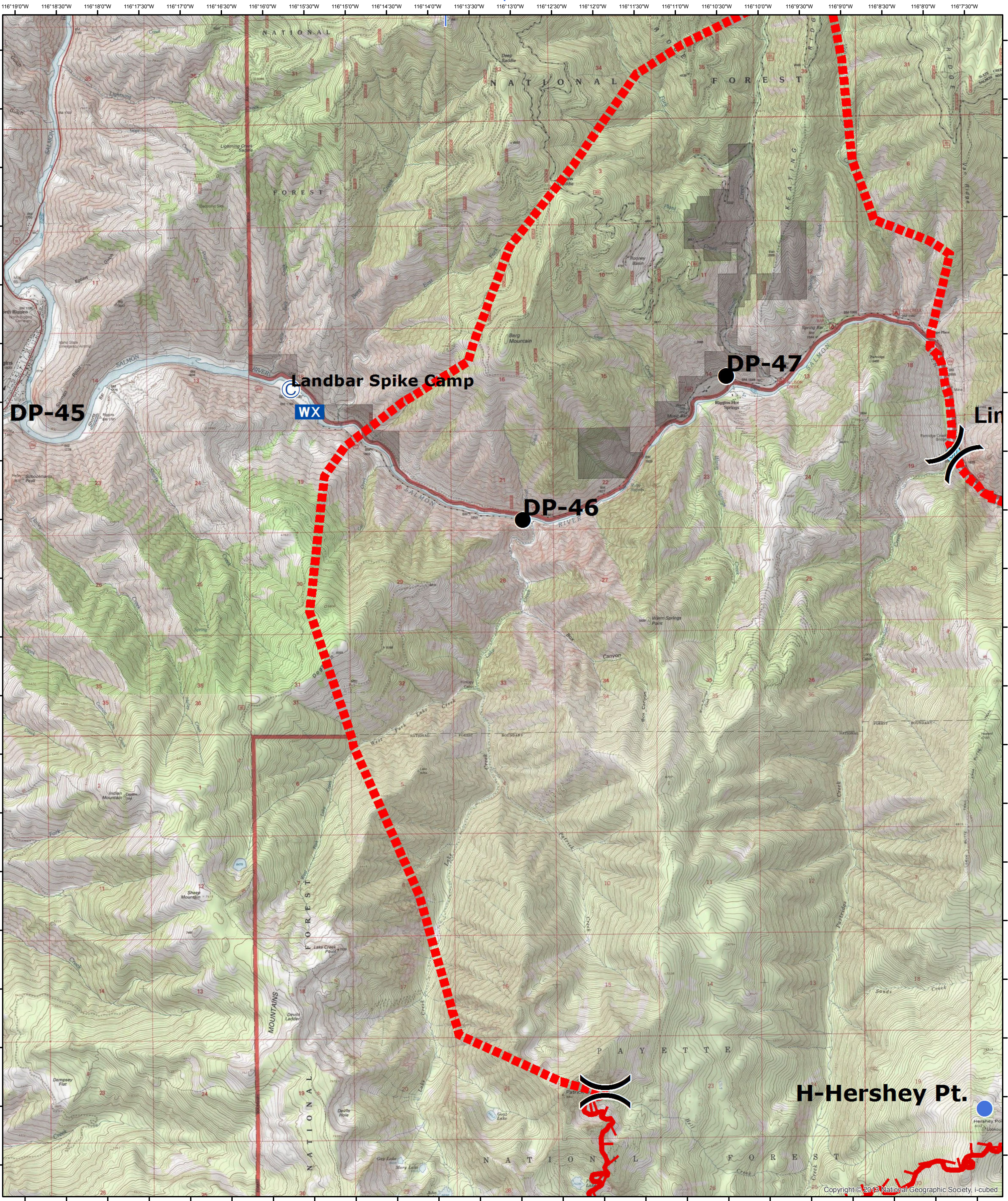
- |  |                |  |                       |  |                     |  |                            |
|--|----------------|--|-----------------------|--|---------------------|--|----------------------------|
|  | Division Break |  | Camp                  |  | Mobile Weather Unit |  | Estimated Perimeter        |
|  | Branch Break   |  | Drop Point            |  | Repeater            |  | Uncontrolled Fire Edge     |
|  | Unsound Bridge |  | Helibase              |  | Sling Site          |  | Completed Dozer Line       |
|  | Hoist          |  | Helispot              |  | Water Source        |  | Completed Line             |
|  | Lookout        |  | Incident Command Post |  |                     |  | H - Hand Line              |
|  |                |  |                       |  |                     |  | R - Road as Completed Line |



**Tepee Springs Fire**  
**IDPAF-000192**  
**8/30/2015**  
**Tile Name:**  
**Divison H**

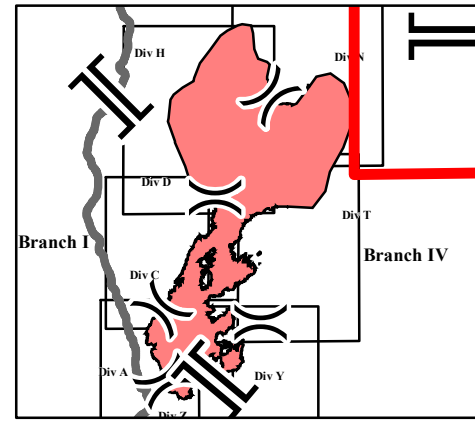


- |                |              |                       |                        |
|----------------|--------------|-----------------------|------------------------|
| Division Break | Camp         | Mobile Weather Unit   | Estimated Perimeter    |
| Branch Break   | Drop Point   | Repeater              | Uncontrolled Fire Edge |
| Unsound Bridge | Helibase     | Sling Site            | Completed Dozer Line   |
| Hoist          | Helispot     | Incident Command Post | Completed Line         |
| Lookout        | Water Source |                       | Hand Line              |
|                |              |                       | Road as Completed Line |

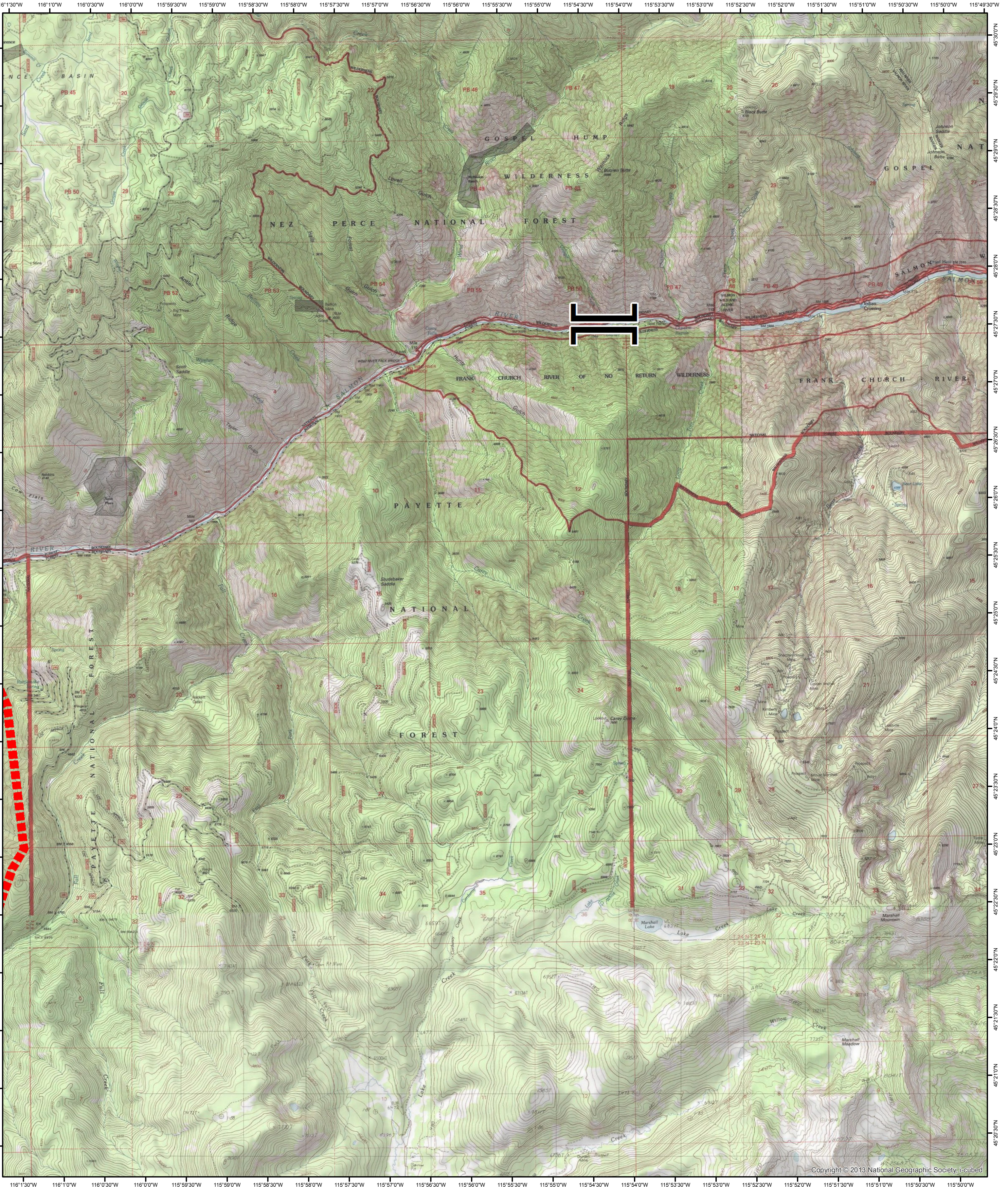


**Tepee Springs Fire**  
**IDPAF-000192**  
**8/30/2015**  
**Tile Name:**  
**Divison N - East**

0 0.475 0.95 1.9 Miles

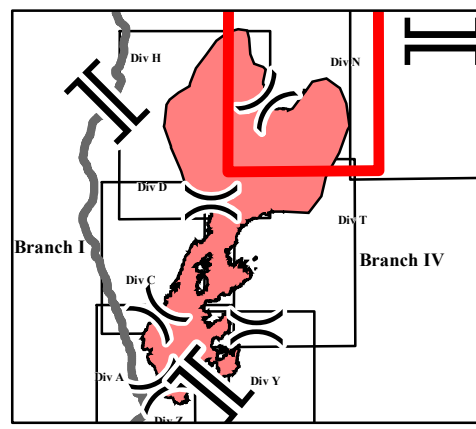


Division Break	Camp	Mobile Weather Unit	Estimated Perimeter
Branch Break	Drop Point	Repeater	Uncontrolled Fire Edge
Unsound Bridge	Helibase	Sling Site	Completed Dozer Line
Hoist	Helispot	Completed Line	H - Hand Line
Lookout	Incident Command Post	Water Source	R - Road as Completed Line

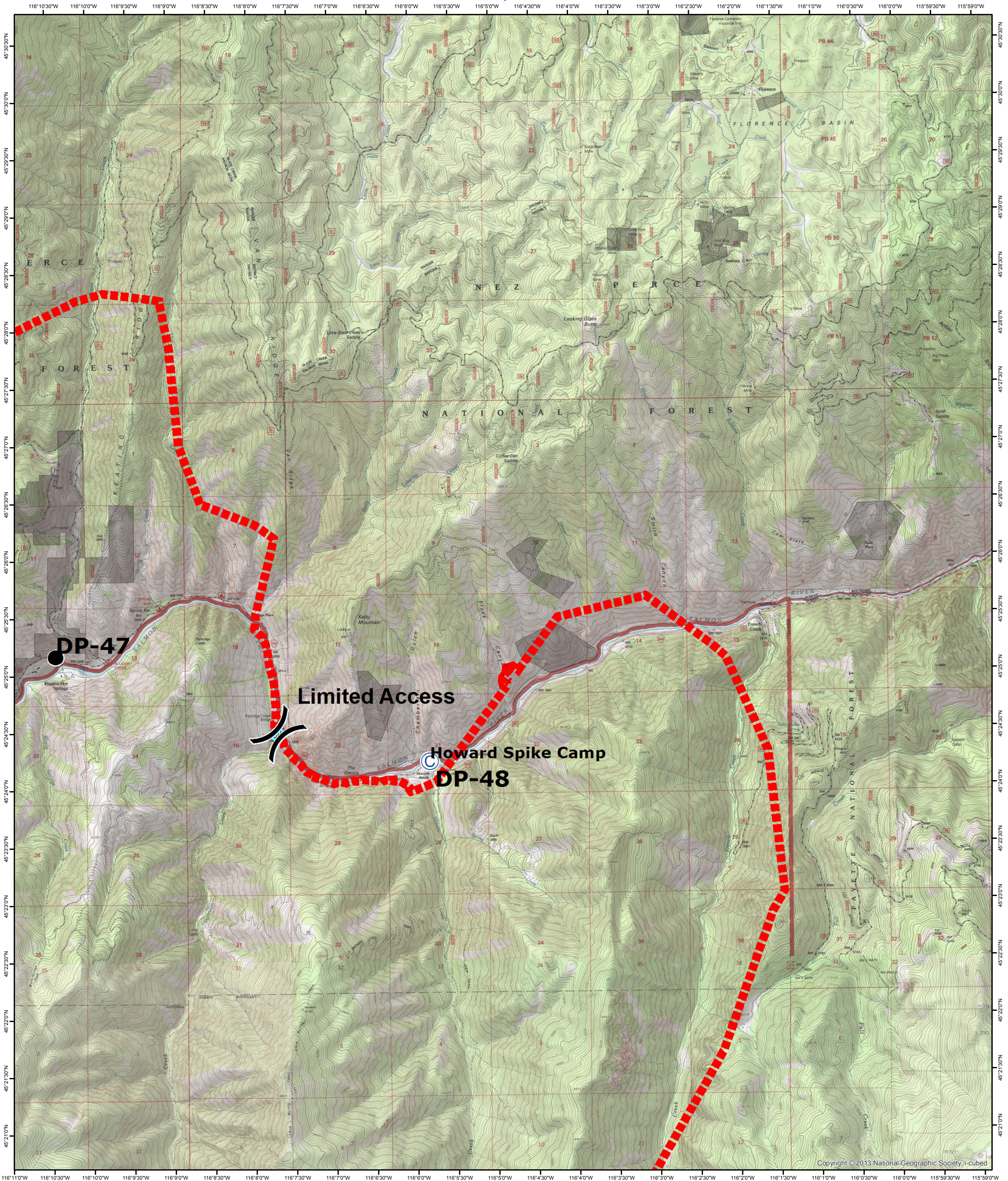


**Tepee Springs Fire**  
**IDPAF-000192**  
**8/30/2015**  
**Tile Name:**  
**Divison N - West**

0 0.475 0.95 1.9 Miles

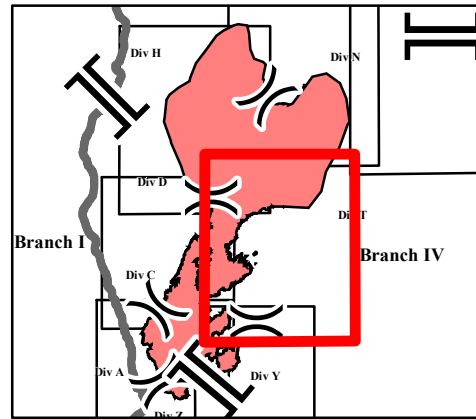


- Division Break
- Branch Break
- Unsound Bridge
- Hoist
- Lookout
- Camp
- Drop Point
- Helibase
- Helispot
- Incident Command Post
- Mobile Weather Unit
- Repeater
- Sling Site
- Water Source
- Estimated Perimeter
- Uncontrolled Fire Edge
- Completed Dozer Line
- Completed Line
- H - Hand Line
- R - Road as Completed Line

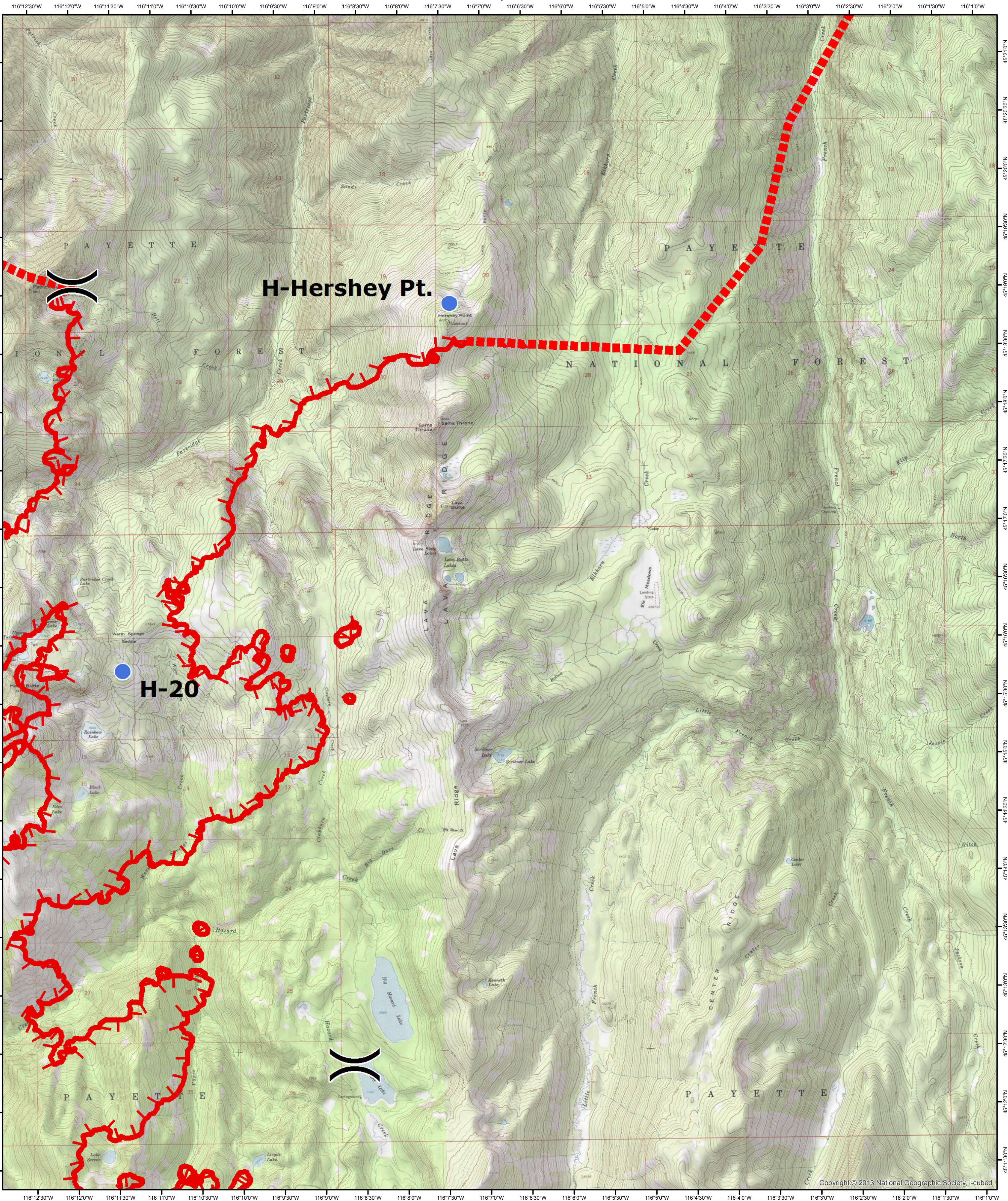


**Tepee Springs Fire**  
**IDPAF-000192**  
**8/30/2015**  
**Tile Name:**  
**Divison T**

0 0.475 0.95 1.9 Miles

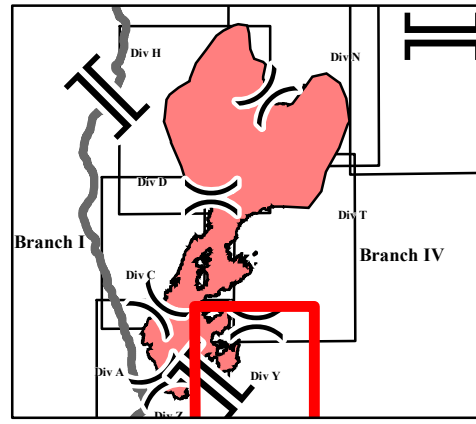


- Division Break
- Branch Break
- Unsound Bridge
- Hoist
- Lookout
- Camp
- Drop Point
- Helibase
- Helispot
- Incident Command Post
- Mobile Weather Unit
- Repeater
- Sling Site
- Water Source
- Estimated Perimeter
- Uncontrolled Fire Edge
- Completed Dozer Line
- Completed Line
- H - Hand Line
- R - Road as Completed Line



**Tepee Springs Fire**  
**IDPAF-000192**  
**8/30/2015**  
**Tile Name:**  
**Divison Y**

0 0.375 0.75 1.5 Miles



- |                |                       |                     |                            |
|----------------|-----------------------|---------------------|----------------------------|
| Division Break | Camp                  | Mobile Weather Unit | Estimated Perimeter        |
| Branch Break   | Drop Point            | Repeater            | Uncontrolled Fire Edge     |
| Unsound Bridge | Helibase              | Sling Site          | Completed Dozer Line       |
| Hoist          | Helispot              | Completed Line      | H - Hand Line              |
| Lookout        | Incident Command Post | Water Source        | R - Road as Completed Line |

