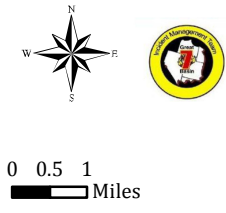
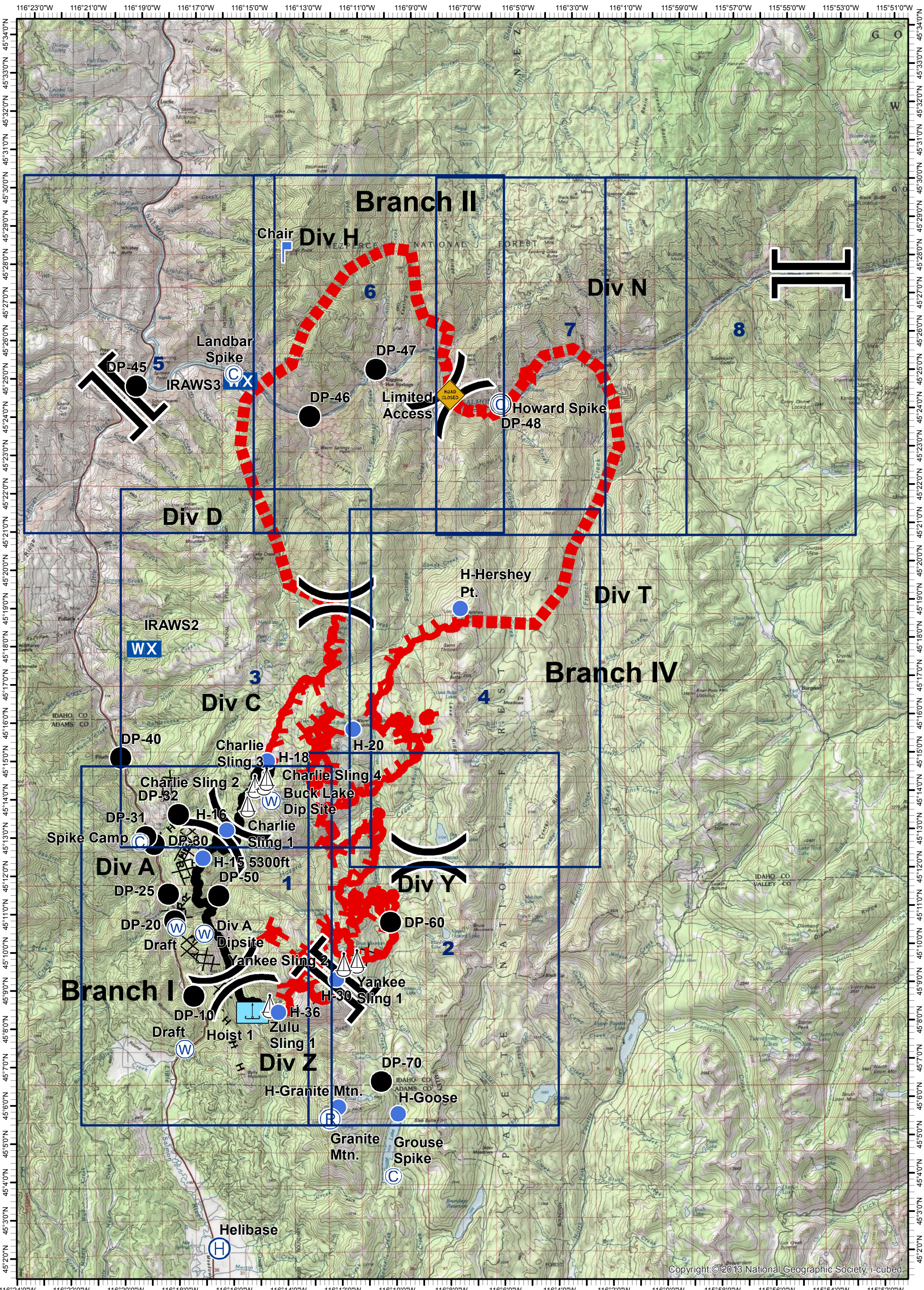


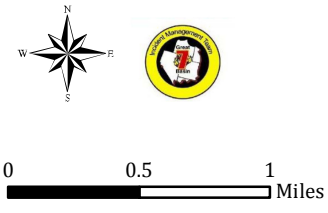
Tepee Springs Fire
 IAP Overview Map
 ID-PAF-000192
 08/30/2015
 77,964 Acres



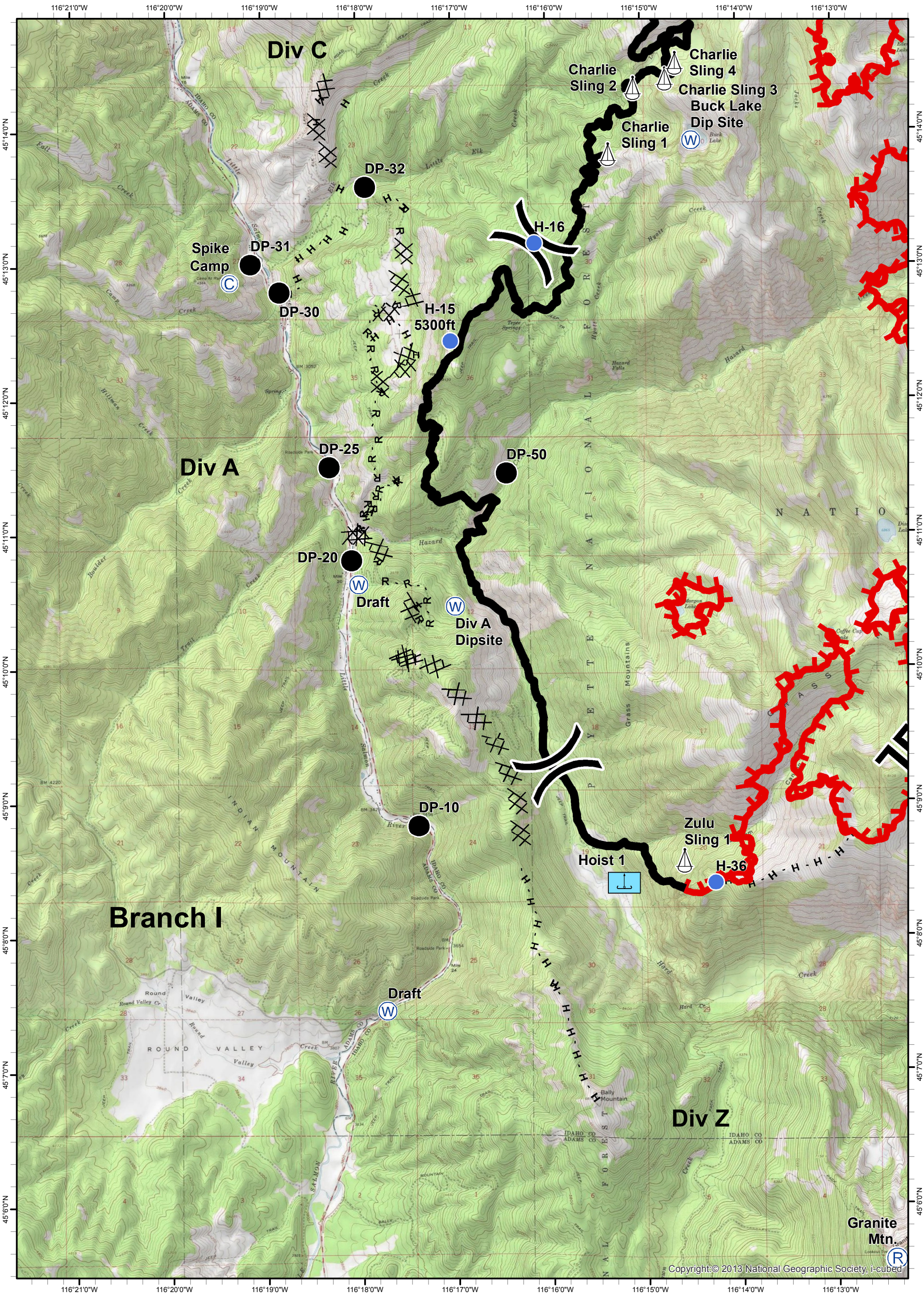
- ★ Cities/Towns
- (X) Division Breaks
- ⊙ Camp
- Drop Point
- ⚓ Lookout
- Helispot
- ⚓ Sling Site
- ⚓ Hoist Site
- Ⓜ Water Source
- WX Mobile Weather Unit
- ⚠ Unsound Bridge
- Uncontrolled Fire Edge
- Estimated Perimeter
- Completed Line
- Completed Dozer Line
- H - H - Hand Line
- R - R - Road as Completed Line



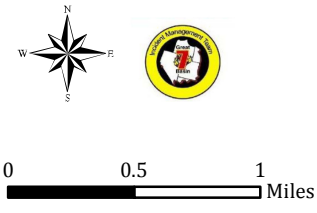
Tepee Springs Fire
IAP 1
ID-PAF-000192
08/30/2015
77,964 Acres



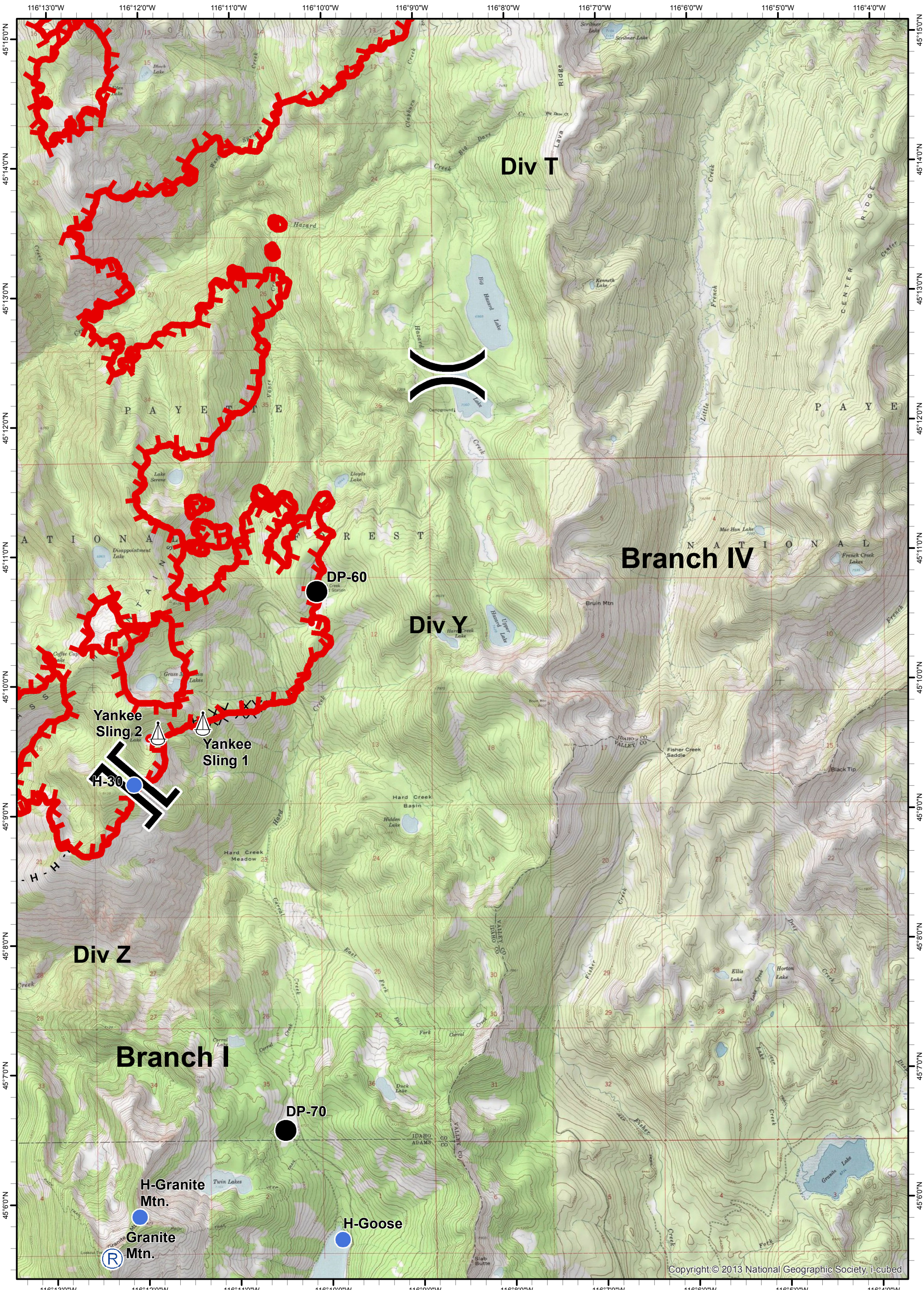
- ★ Cities/Towns
- () Division Breaks
- ⊙ Camp
- Drop Point
- ⚓ Lookout
- Helispot
- ⚓ Sling Site
- ⚓ Hoist Site
- Ⓜ Water Source
- WX Mobile Weather Unit
- ⚠ Unsound Bridge
- ▬ Uncontrolled Fire Edge
- ▬ Estimated Perimeter
- ▬ Completed Line
- ⊗ Completed Dozer Line
- H - H - Hand Line
- R - R - Road as Completed Line



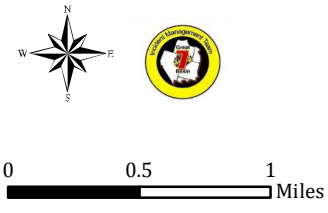
Tepee Springs Fire
IAP 2
ID-PAF-000192
08/30/2015
77,964 Acres



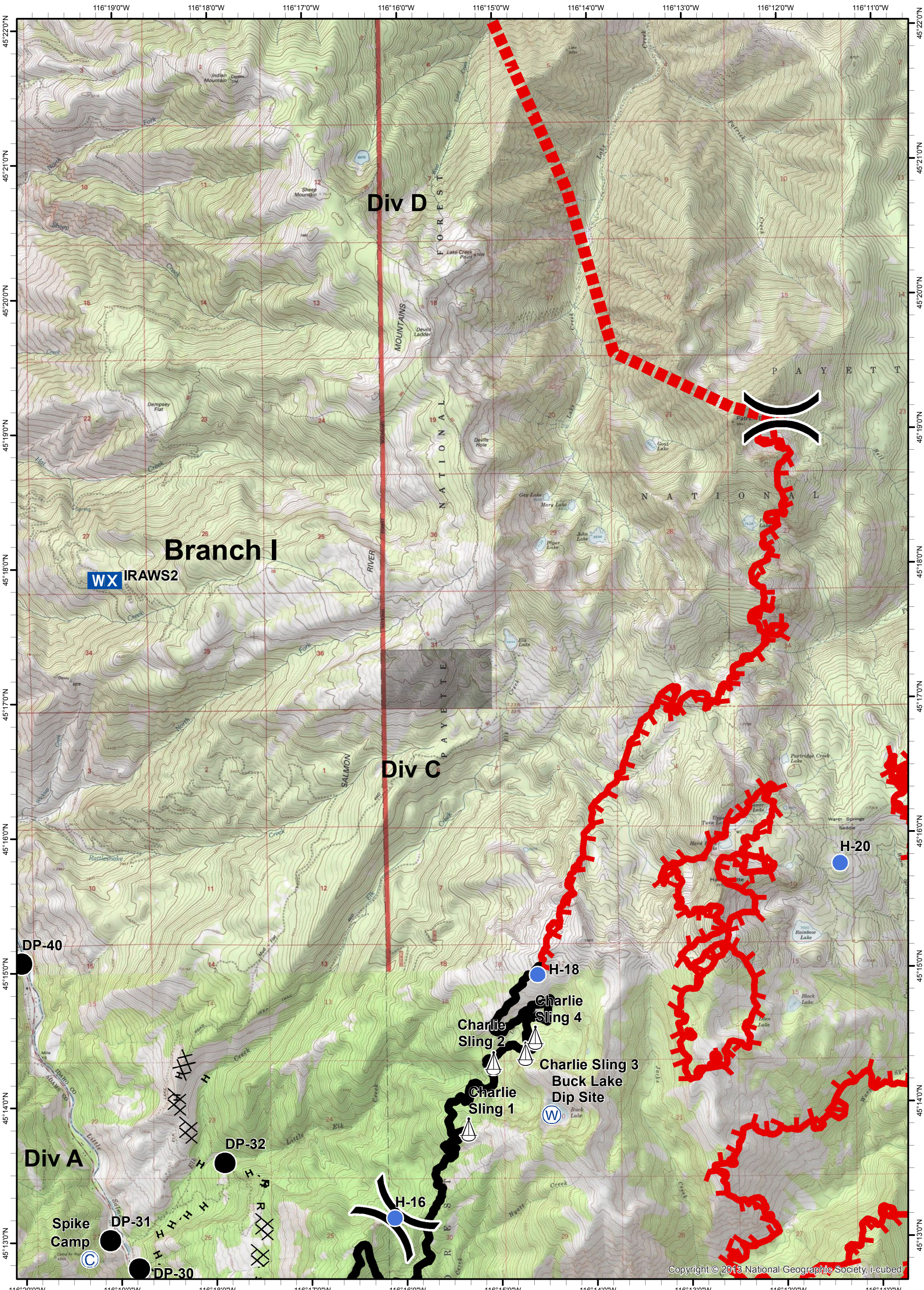
- ★ Cities/Towns
- () Division Breaks
- Ⓒ Camp
- Drop Point
- 🚒 Lookout
- Helispot
- 🚢 Sling Site
- 🚢 Hoist Site
- 🌊 Water Source
- WX Mobile Weather Unit
- 🚧 Uncontrolled Fire Edge
- 🔴 Estimated Perimeter
- 🟩 Completed Line
- ⊗ Completed Dozer Line
- H - H - Hand Line
- R - R - Road as Completed Line
- 🚧 ROAD CLOSED Unsound Bridge



Tepee Springs Fire
 IAP 3
 ID-PAF-000192
 08/30/2015
 77,964 Acres



- ★ Cities/Towns
- () Division Breaks
- Ⓢ Camp
- Drop Point
- 🚩 Lookout
- Helispot
- ⚓ Sling Site
- 🚰 Hoist Site
- 🌊 Water Source
- WX Mobile Weather Unit
- 🚧 Unsound Bridge
- 🔴 Uncontrolled Fire Edge
- 🔴 Estimated Perimeter
- ⬛ Completed Line
- ⊗ Completed Dozer Line
- H - H - Hand Line
- R - R - Road as Completed Line



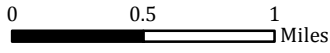
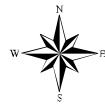
Tepee Springs Fire

IAP 4

ID-PAF-000192

08/30/2015

77,964 Acres



★ Cities/Towns

() Division Breaks

Ⓒ Camp

● Drop Point

🚰 Lookout

● Helispot

🚧 Sling Site

🚰 Hoist Site

🚰 Water Source

WX Mobile Weather Unit

🚧 Unsound Bridge

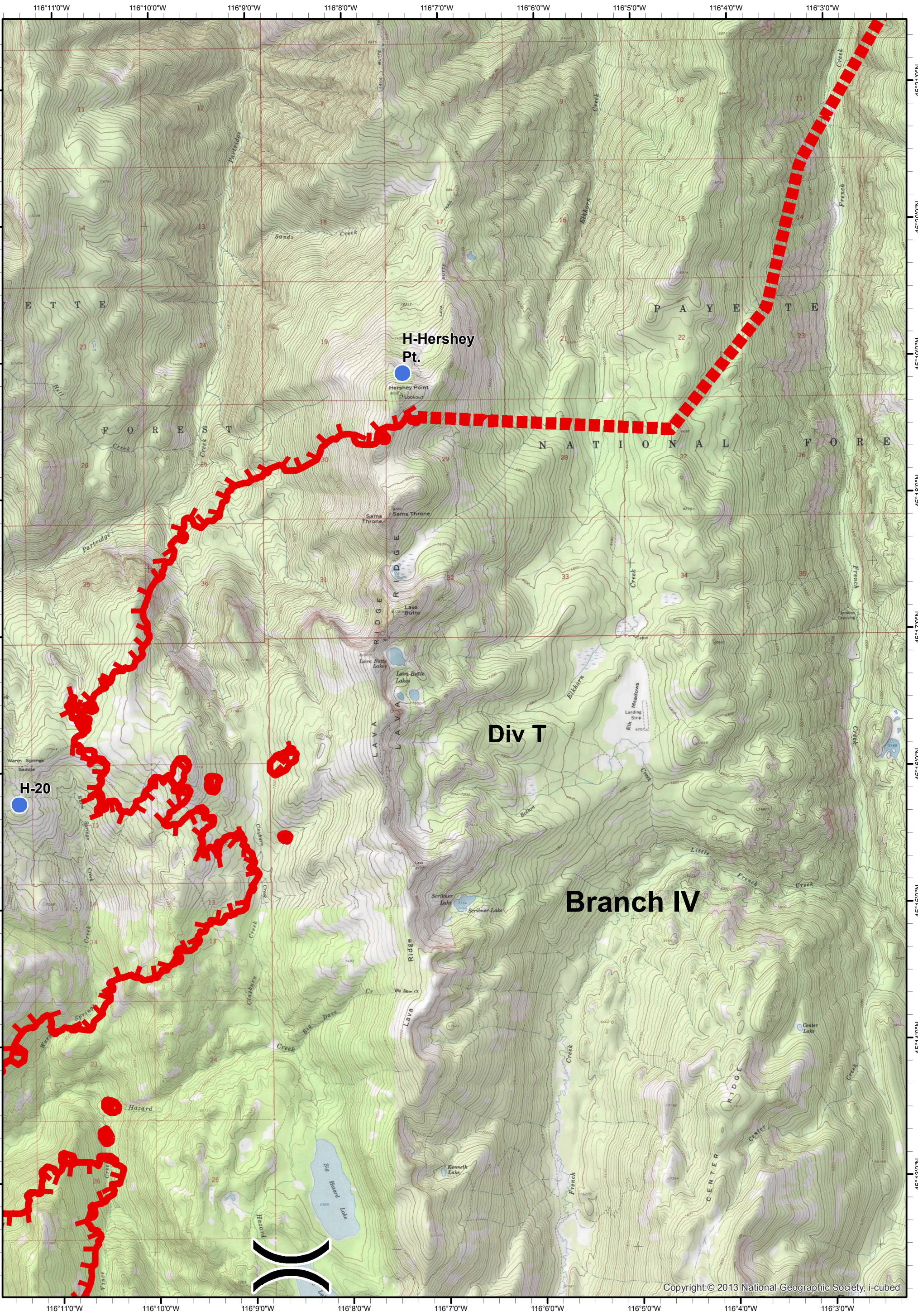
🔥 Uncontrolled Fire Edge

🔥 Estimated Perimeter

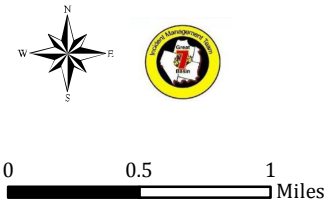
🔥 Completed Line

H - H - Hand Line

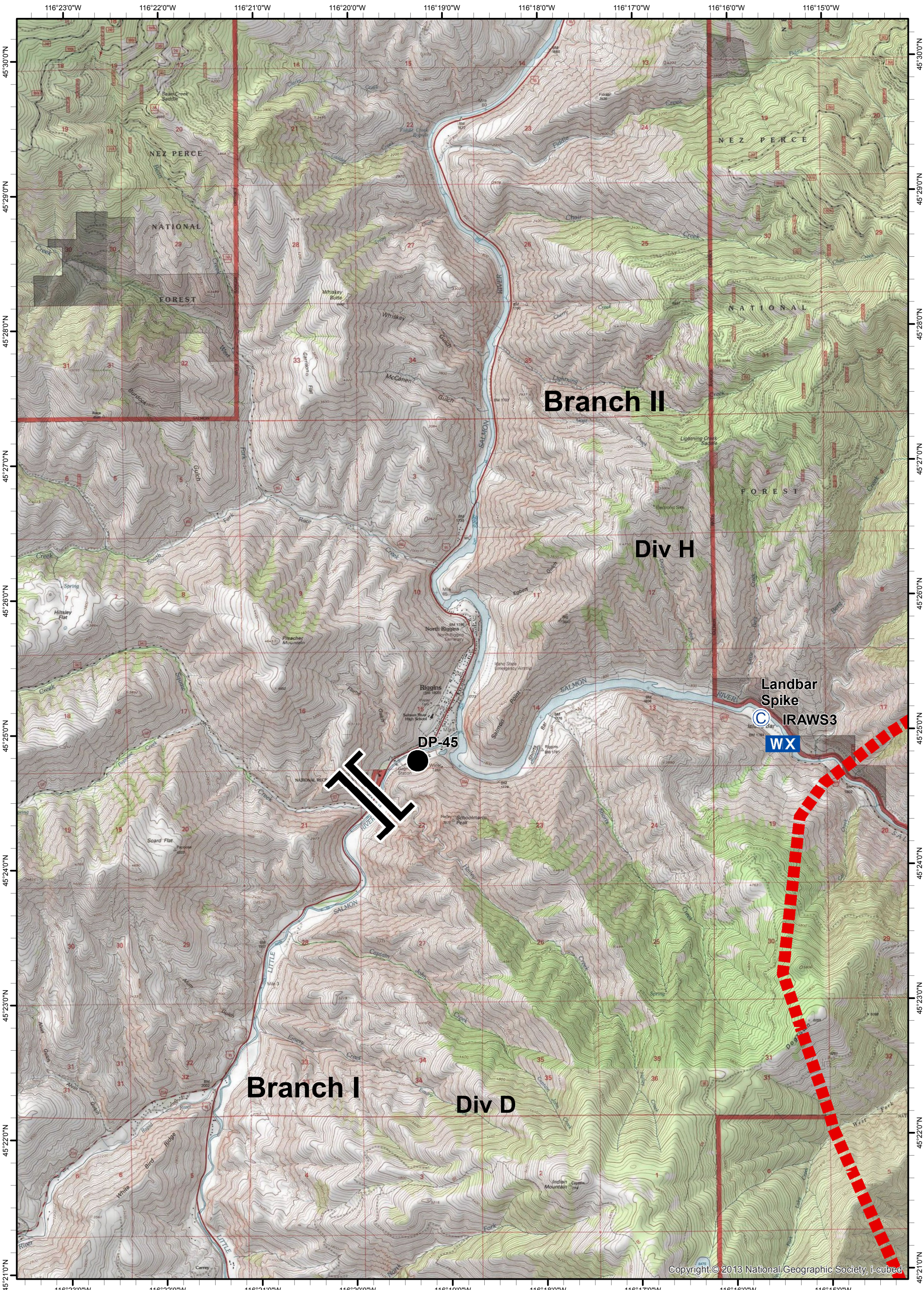
R - R - Road as Completed Line



Tepee Springs Fire
IAP 5
ID-PAF-000192
08/30/2015
77,964 Acres



- ★ Cities/Towns
- (X) Division Breaks
- Ⓢ Camp
- Drop Point
- 🚩 Lookout
- Helispot
- 🚢 Sling Site
- 🚰 Hoist Site
- 🌊 Water Source
- 📶 Mobile Weather Unit
- 🚧 Uncontrolled Fire Edge
- 🔴 Estimated Perimeter
- 🟩 Completed Line
- ⊗ Completed Dozer Line
- H - H - Hand Line
- R - R - Road as Completed Line



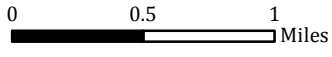
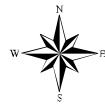
Tepee Springs Fire

IAP 6

ID-PAF-000192

08/30/2015

77,964 Acres



★ Cities/Towns

() Division Breaks

Ⓒ Camp

● Drop Point

Lookout

● Helispot

⚓ Sling Site

Hoist Site

Ⓜ Water Source

WX Mobile Weather Unit

ROAD CLOSED

Unsound Bridge

Uncontrolled Fire Edge

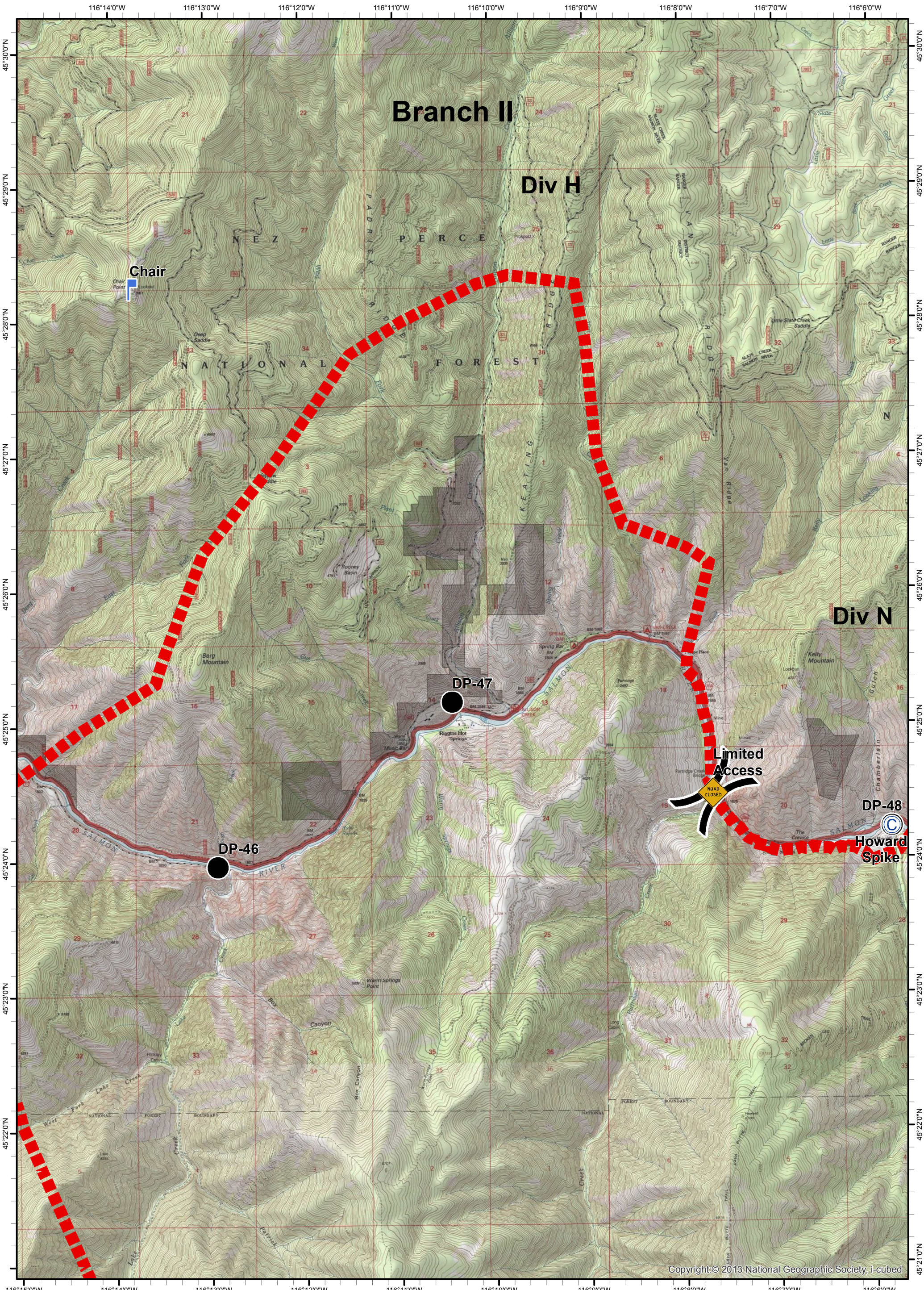
Estimated Perimeter

Completed Line

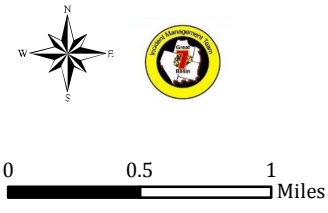
Completed Dozer Line

H - H - Hand Line

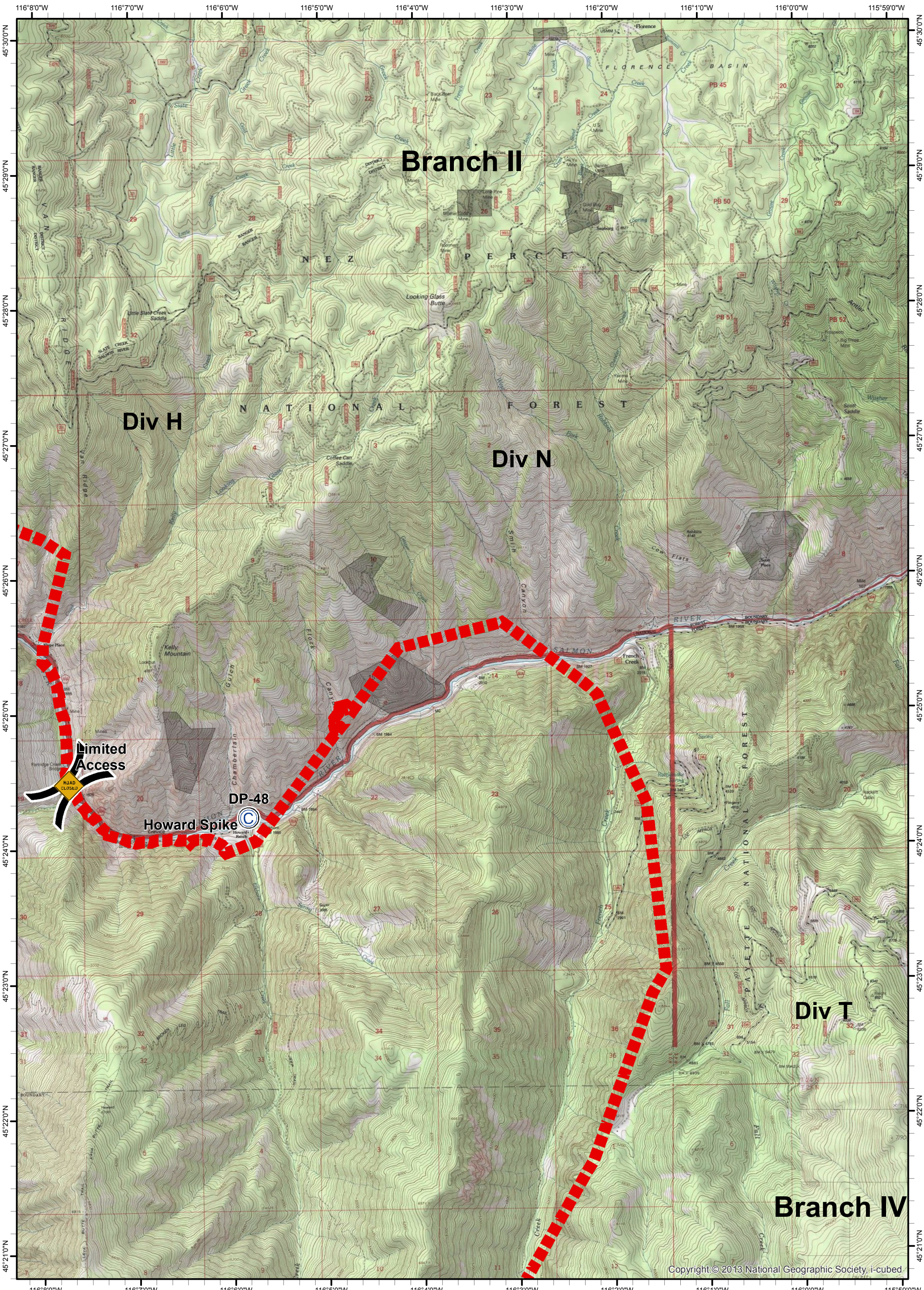
R - R - Road as Completed Line



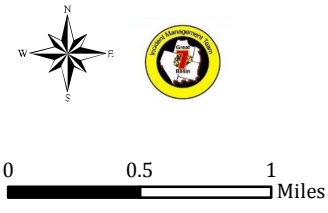
Tepee Springs Fire
IAP 7
ID-PAF-000192
08/30/2015
77,964 Acres



- ★ Cities/Towns
- () Division Breaks
- Ⓒ Camp
- Drop Point
- 🚰 Lookout
- Helispot
- 🚢 Sling Site
- 🚰 Hoist Site
- 🚰 Water Source
- WX Mobile Weather Unit
- 🚧 Uncontrolled Fire Edge
- 🔴 Estimated Perimeter
- 🟩 Completed Line
- ⊗ Completed Dozer Line
- H - H - Hand Line
- R - R - Road as Completed Line



Tepee Springs Fire
IAP 8
ID-PAF-000192
08/30/2015
77,964 Acres



- ★ Cities/Towns
- (X) Division Breaks
- Ⓒ Camp
- Drop Point
- 🚰 Lookout
- Helispot
- 🚢 Sling Site
- 🚰 Hoist Site
- 🌊 Water Source
- WX Mobile Weather Unit
- 🚧 Uncontrolled Fire Edge
- 🔴 Estimated Perimeter
- 🟩 Completed Line
- 🚧 Completed Dozer Line
- H - H - Hand Line
- R - R - Road as Completed Line

