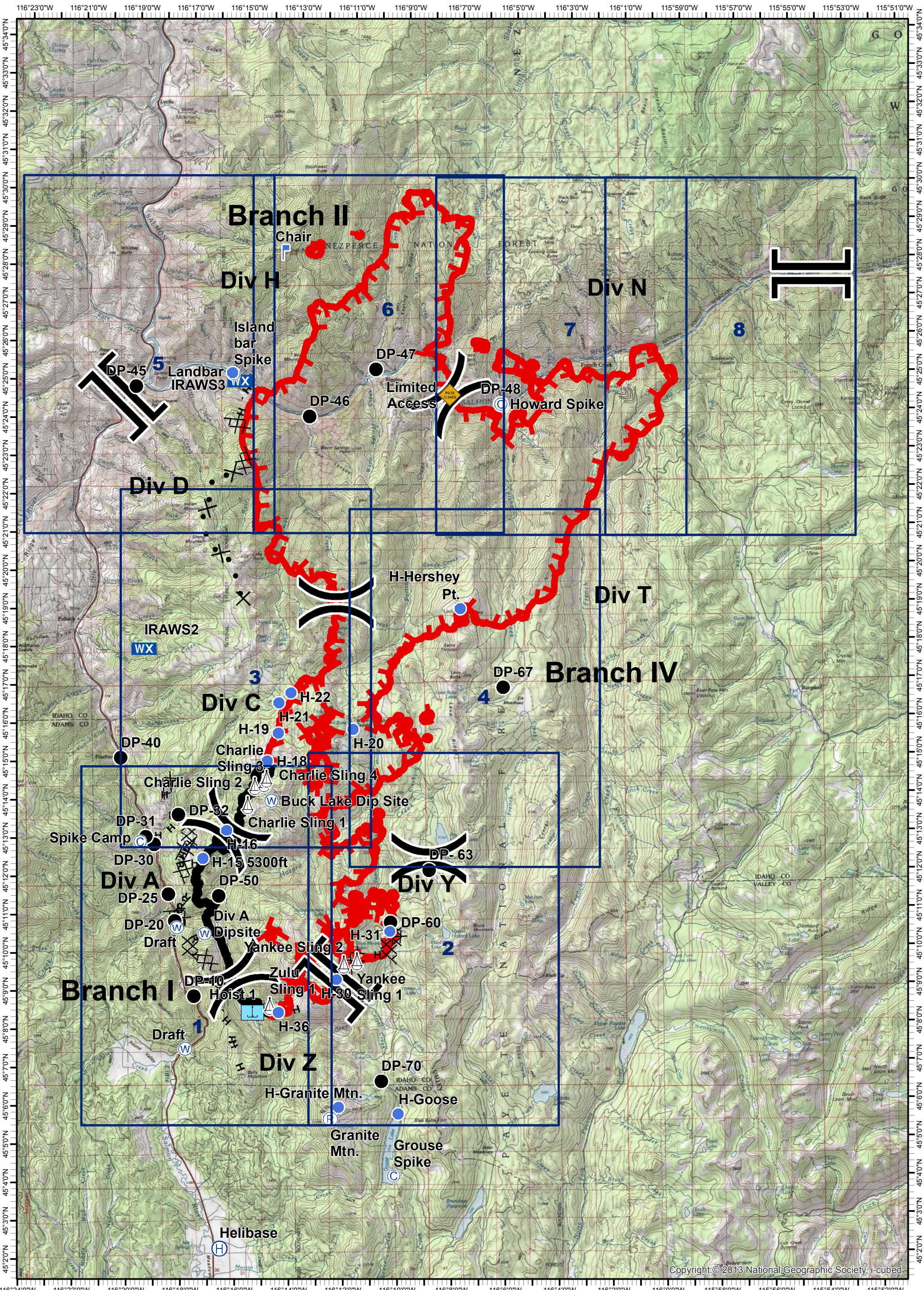


Tepee Springs Fire  
 IAP Overview Map  
 ID-PAF-000192  
 08/31/2015  
 78,130 Acres



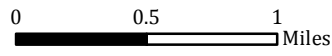
0 0.5 1  
 Miles

- ★ Cities/Towns
- ⌋ Lookout
- ⊙ Water Source
- ⊗ Proposed Dozer Line
- ⌋ Division Breaks
- Helispot
- Ⓜ Mobile Weather Unit
- ⊗ Completed Line
- Ⓞ Camp
- ⚙ Sling Site
- ⚠ Unsound Bridge
- ⊗ Completed Dozer Line
- Drop Point
- ⚙ Hoist Site
- ⚠ Uncontrolled Fire Edge
- H - H - Hand Line
- R - R - Road as Completed Line

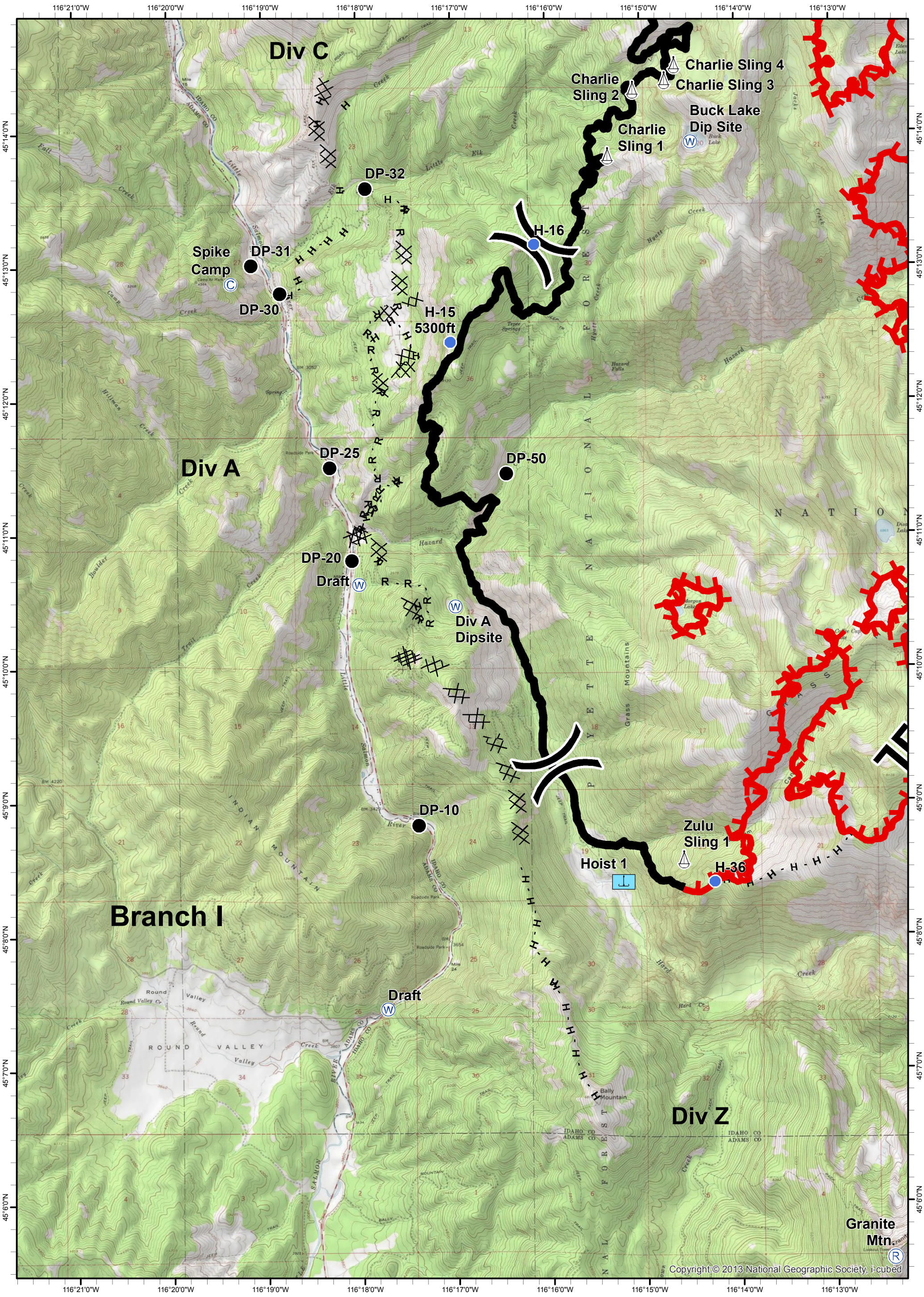




**Tepee Springs Fire**  
**IAP 1**  
**ID-PAF-000192**  
**08/31/2015**  
**78,130 Acres**



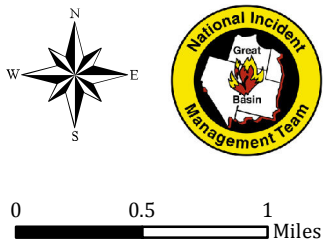
- ★ Cities/Towns
- ( ) Division Breaks
- Ⓒ Camp
- Drop Point
- ⚓ Lookout
- Helispot
- ⚙ Sling Site
- ⚙ Hoist Site
- Ⓜ Water Source
- Ⓜ WX Mobile Weather Unit
- ⚠ Unsound Bridge
- ⚠ Uncontrolled Fire Edge
- ⊗ Proposed Dozer Line
- ▬ Completed Line
- ⊗⊗ Completed Dozer Line
- H - H - Hand Line
- R - R - Road as Completed Line



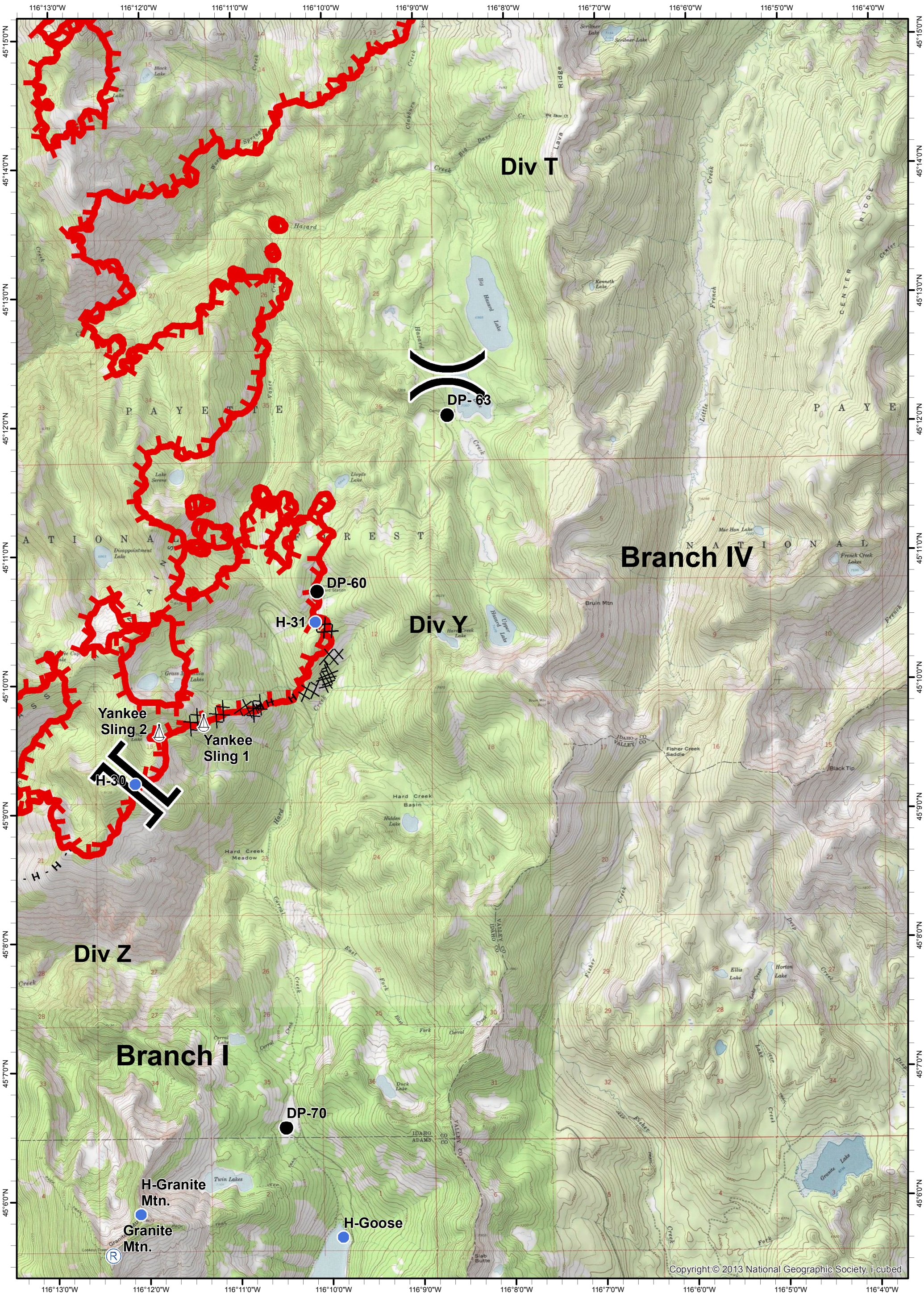
**Granite Mtn.**  
Lookout Tower



**Tepee Springs Fire**  
**IAP 2**  
**ID-PAF-000192**  
**08/31/2015**  
**78,130 Acres**

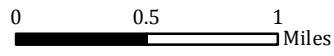


- ★ Cities/Towns
- ( ) Division Breaks
- Ⓒ Camp
- Drop Point
- ⚠ Lookout
- Helispot
- ⚙ Sling Site
- ⚙ Hoist Site
- Ⓜ Water Source
- Ⓜ WX Mobile Weather Unit
- ⚠ Unsound Bridge
- ⚠ Uncontrolled Fire Edge
- ⊗ Proposed Dozer Line
- ▬ Completed Line
- ⊗⊗ Completed Dozer Line
- H - H - Hand Line
- R - R - Road as Completed Line

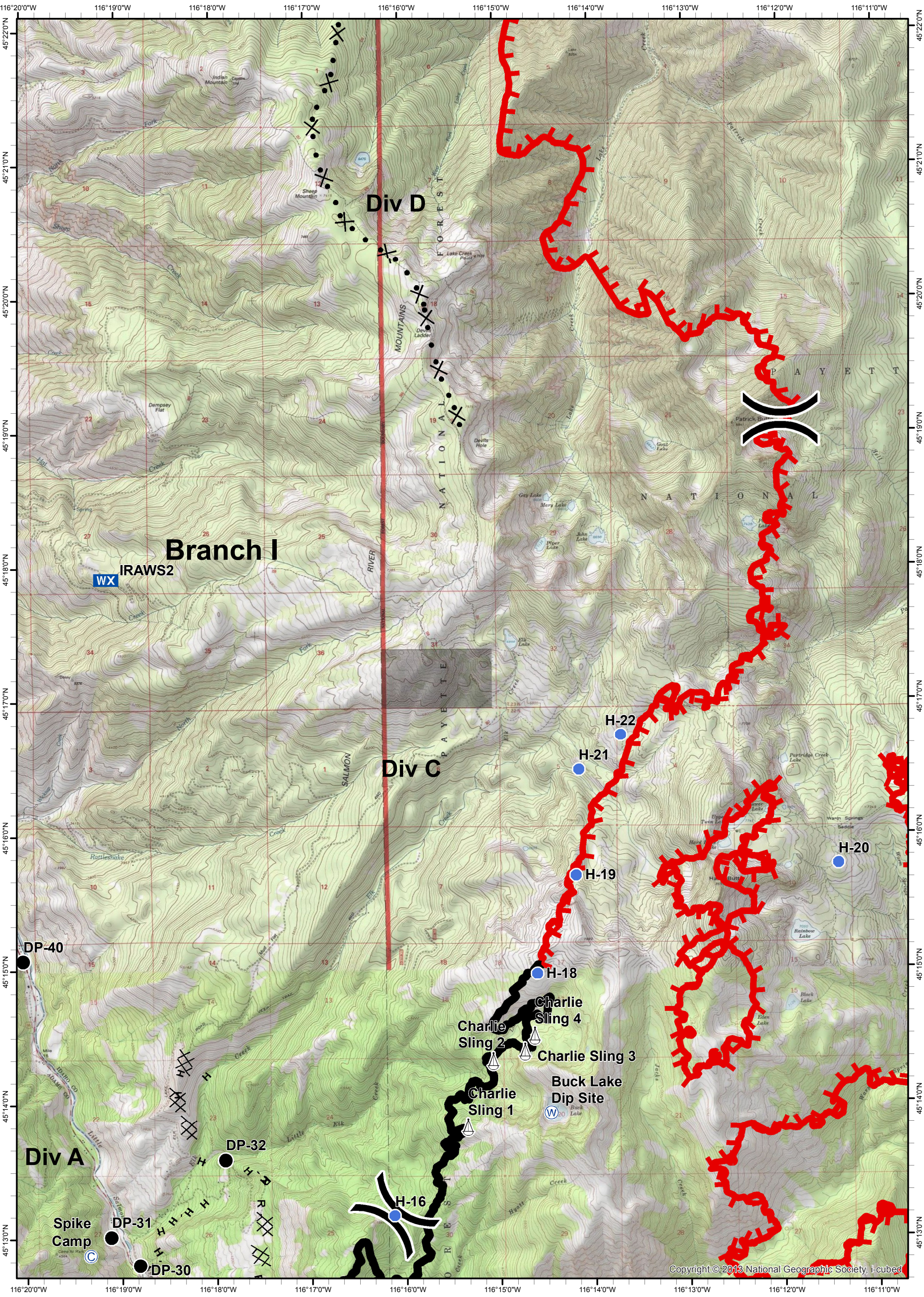




**Tepee Springs Fire**  
**IAP 3**  
**ID-PAF-000192**  
**08/31/2015**  
**78,130 Acres**



- ★ Cities/Towns
- ⌋ Lookout
- Ⓜ Water Source
- ⊗ • • Proposed Dozer Line
- ⌋ Division Breaks
- Helispot
- Ⓜ WX Mobile Weather Unit
- ⊗ • • Completed Line
- Ⓞ Camp
- ⚙ Sling Site
- ⚠ Unsound Bridge
- ⊗ • • Completed Dozer Line
- Drop Point
- Ⓜ Hoist Site
- ⚠ Uncontrolled Fire Edge
- H - H - Hand Line
- R - R - Road as Completed Line





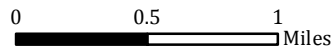
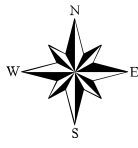
# Tepee Springs Fire

IAP 4

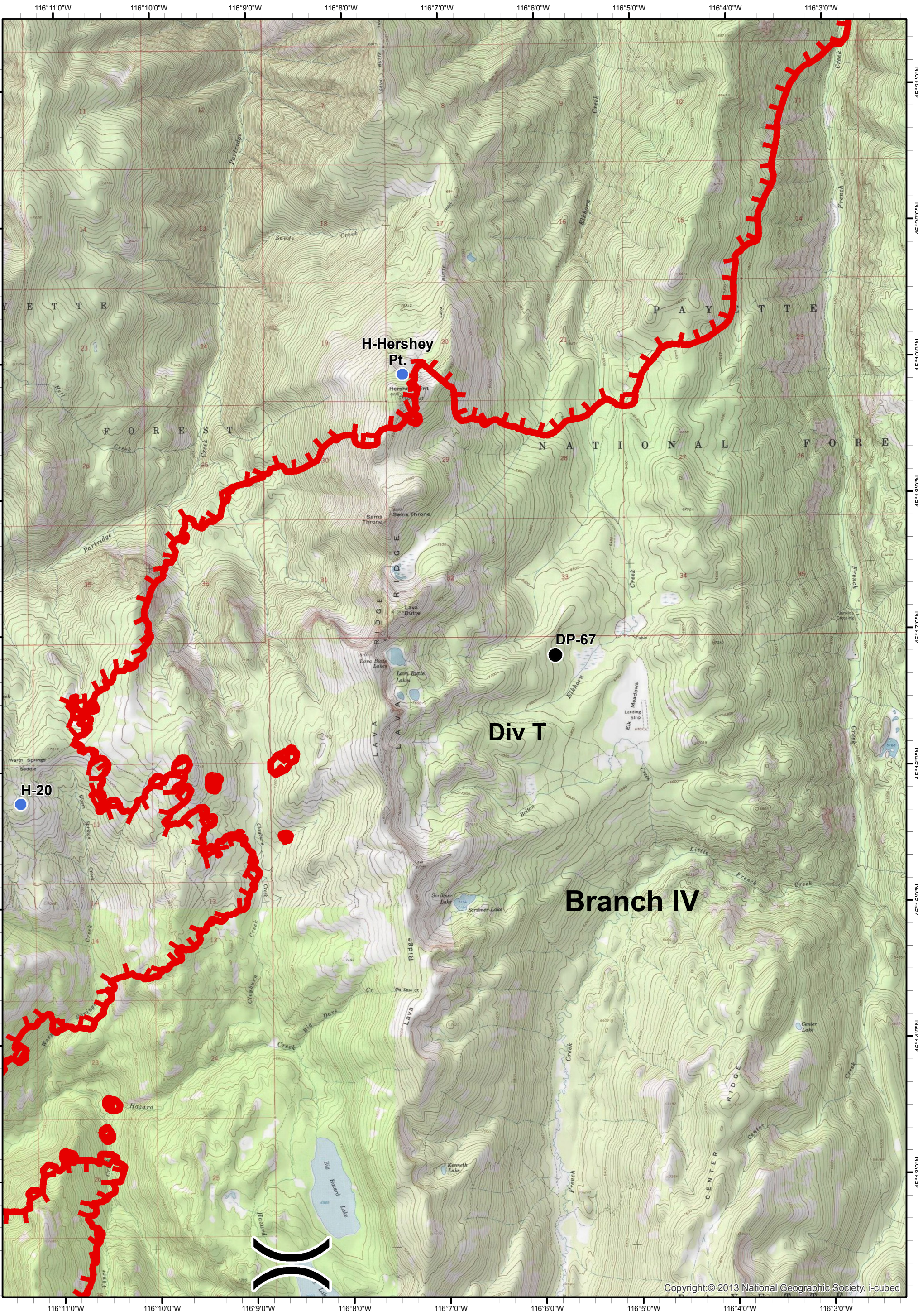
ID-PAF-000192

08/31/2015

78,130 Acres

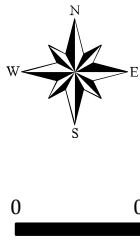


- ★ Cities/Towns
- ( ) Division Breaks
- © Camp
- Drop Point
- Lookout
- Helispot
- ⚓ Sling Site
- ⚙ Hoist Site
- Ⓜ Water Source
- WX Mobile Weather Unit
- ⚠ Unsound Bridge
- Uncontrolled Fire Edge
- Proposed Dozer Line
- Completed Line
- Completed Dozer Line
- H - H - Hand Line
- R - R - Road as Completed Line

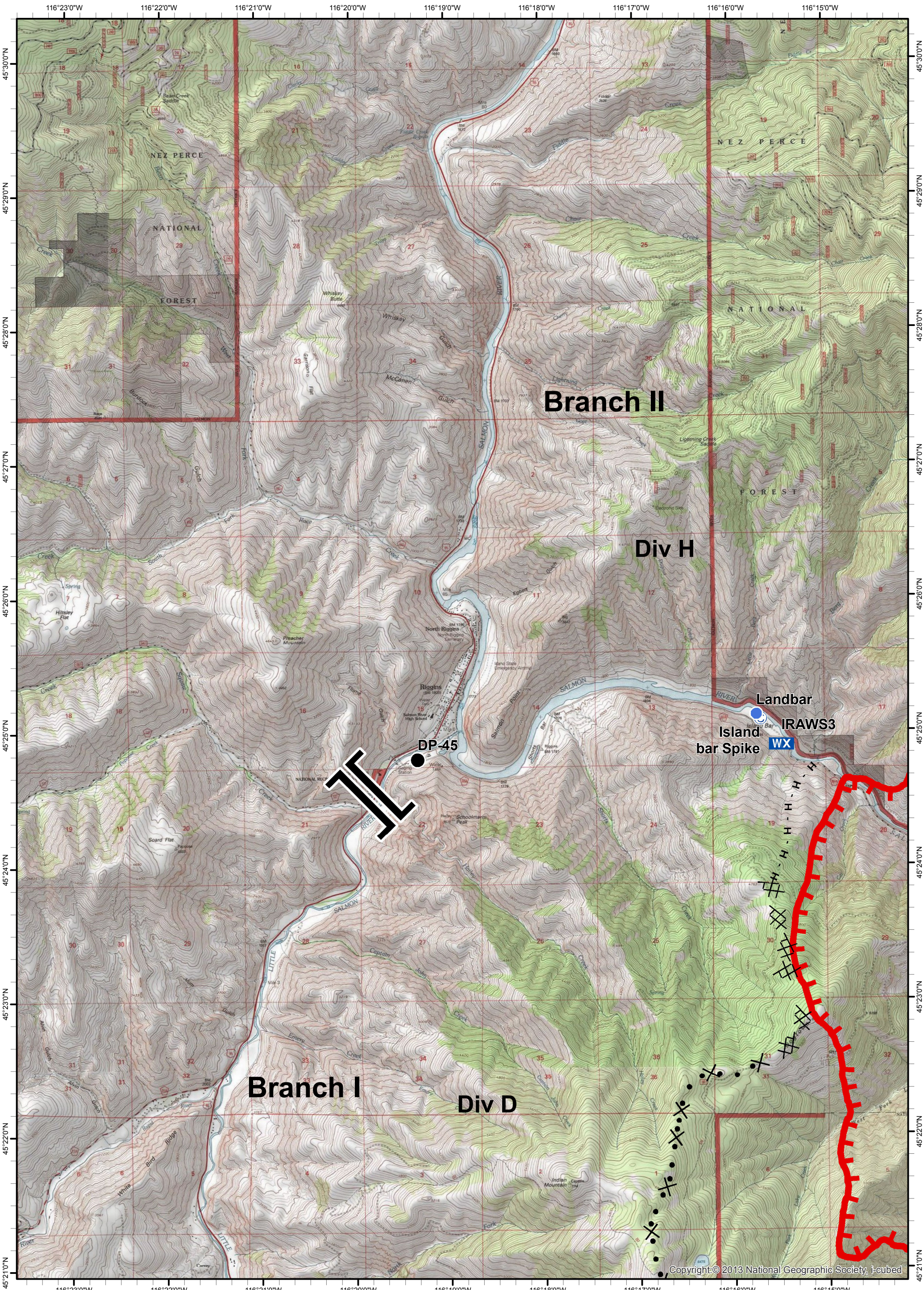




**Tepee Springs Fire**  
**IAP 5**  
**ID-PAF-000192**  
**08/31/2015**  
**78,130 Acres**

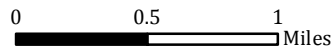


- ★ Cities/Towns
- ( ) Division Breaks
- © Camp
- Drop Point
- 🚒 Lookout
- 📍 Helispot
- 🚢 Sling Site
- 🚰 Hoist Site
- 🌊 Water Source
- 📶 Mobile Weather Unit
- ⚠️ Unsound Bridge
- 🔥 Uncontrolled Fire Edge
- ⊗ Proposed Dozer Line
- ▬ Completed Line
- ⊗⊗ Completed Dozer Line
- H - H - Hand Line
- R - R - Road as Completed Line

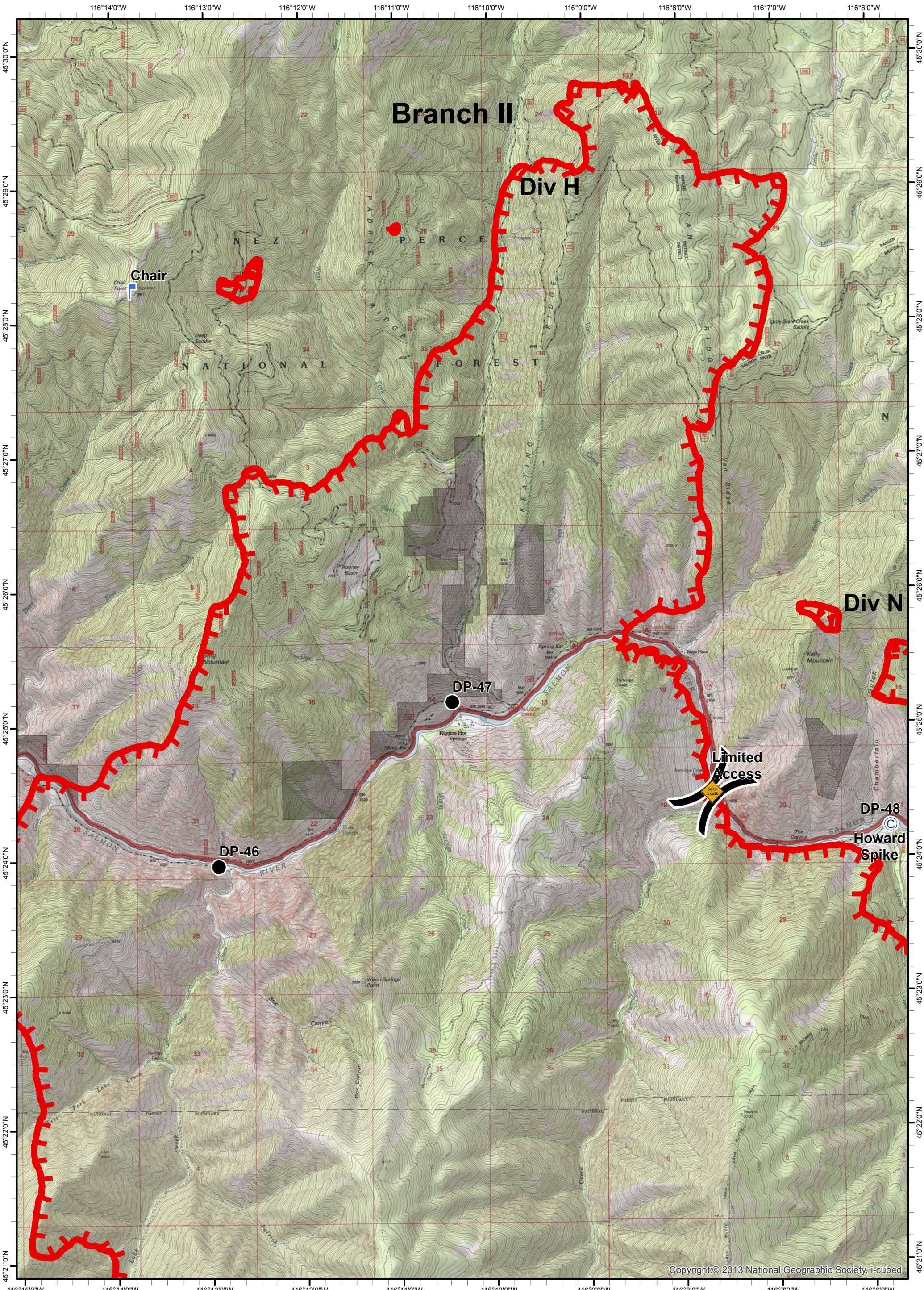




Tepee Springs Fire  
 IAP 6  
 ID-PAF-000192  
 08/31/2015  
 78,130 Acres

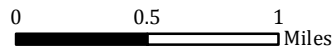


- ★ Cities/Towns
- ( ) Division Breaks
- © Camp
- Drop Point
- 🚰 Lookout
- 📍 Helispot
- 🚧 Sling Site
- 🚰 Hoist Site
- 🌊 Water Source
- 🌨️ Mobile Weather Unit
- ⚠️ Unsound Bridge
- 🔥 Uncontrolled Fire Edge
- ⊗ Proposed Dozer Line
- ▬ Completed Line
- ⊗⊗ Completed Dozer Line
- H - H - Hand Line
- R - R - Road as Completed Line

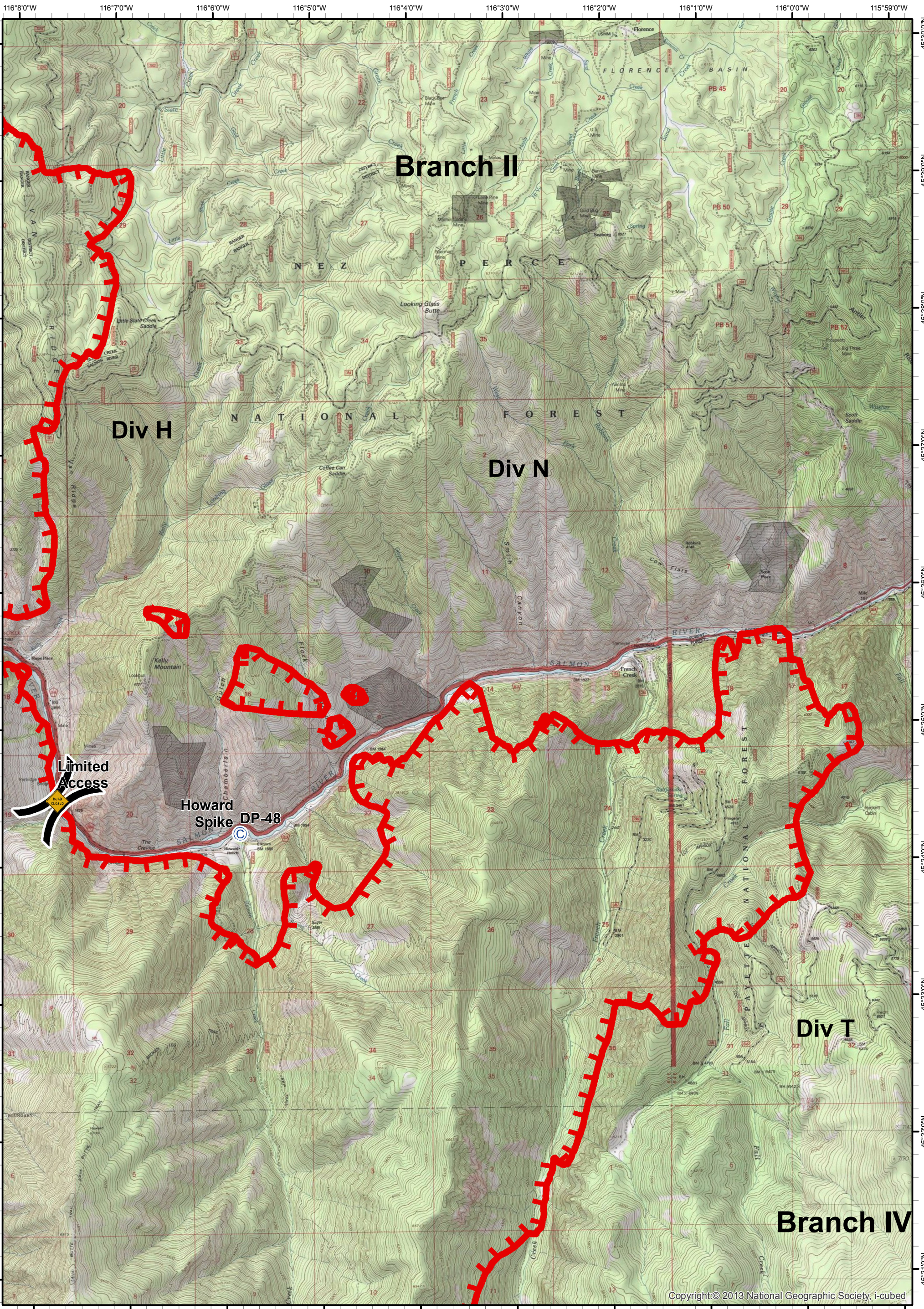




**Tepee Springs Fire**  
**IAP 7**  
**ID-PAF-000192**  
**08/31/2015**  
**78,130 Acres**

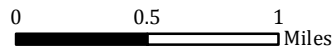


- ★ Cities/Towns
- ( ) Division Breaks
- Ⓒ Camp
- Drop Point
- ⚓ Lookout
- Helispot
- ⚓ Sling Site
- ⚓ Hoist Site
- Ⓜ Water Source
- Ⓜ WX Mobile Weather Unit
- ⚠ Unsound Bridge
- ⚠ Uncontrolled Fire Edge
- ⊗ Proposed Dozer Line
- ▬ Completed Line
- ⊗⊗ Completed Dozer Line
- H - H - Hand Line
- R - R - Road as Completed Line





**Tepee Springs Fire**  
**IAP 8**  
**ID-PAF-000192**  
**08/31/2015**  
**78,130 Acres**



- ★ Cities/Towns
- ⌋ Lookout
- Ⓜ Water Source
- ⊗ • • Proposed Dozer Line
- ⌋ Division Breaks
- Helispot
- Ⓜ WX Mobile Weather Unit
- ⊞ Completed Line
- Ⓞ Camp
- ⚙ Sling Site
- ⚠ Unsound Bridge
- ⊞⊞ Completed Dozer Line
- Drop Point
- ⚙ Hoist Site
- ⚠ Uncontrolled Fire Edge
- H - H - Hand Line
- R - R - Road as Completed Line

