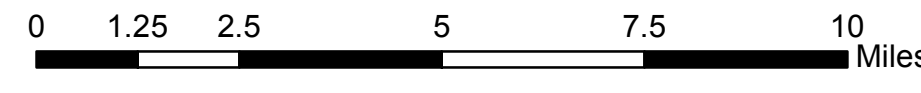
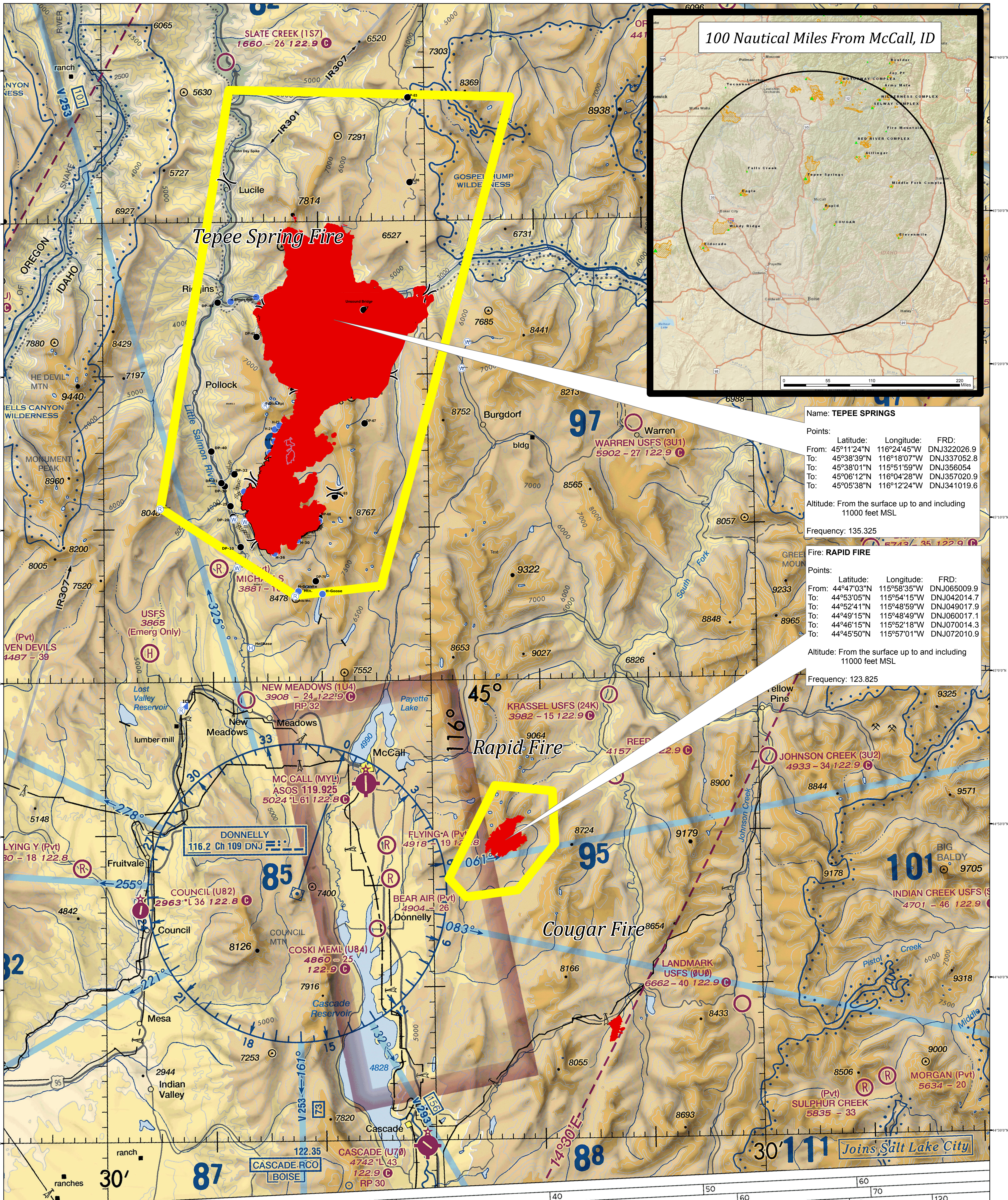


Tepee Springs Fire Area TFR 9/1/2015



- Drop Point
- ⊕ Helibase
- Helispot
- Ⓜ Incident Command Post
- Ⓜ Repeater
- Ⓜ Water Source
- Uncontrolled Fire Edge
- ⊘ Completed Dozer Line
- Completed Line
- FirePolygon
- ▭ TFR Boundary



100 Nautical Miles From McCall, ID

Name: TEPEE SPRINGS

Points:

From:	Latitude:	Longitude:	FRD:
	45°11'24"N	116°24'45"W	DNJ322026.9
To:	45°38'39"N	116°18'07"W	DNJ337052.8
To:	45°38'01"N	115°51'59"W	DNJ356054
To:	45°06'12"N	116°04'28"W	DNJ357020.9
To:	45°05'38"N	116°12'24"W	DNJ341019.6

Altitude: From the surface up to and including 11000 feet MSL

Frequency: 135.325

Fire: RAPID FIRE

Points:

From:	Latitude:	Longitude:	FRD:
	44°47'03"N	115°58'35"W	DNJ065009.9
To:	44°53'05"N	115°54'15"W	DNJ042014.7
To:	44°52'41"N	115°48'59"W	DNJ049017.9
To:	44°49'15"N	115°48'49"W	DNJ060017.1
To:	44°46'15"N	115°52'18"W	DNJ070014.3
To:	44°45'50"N	115°57'01"W	DNJ072010.9

Altitude: From the surface up to and including 11000 feet MSL

Frequency: 123.825

Joins Salt Lake City