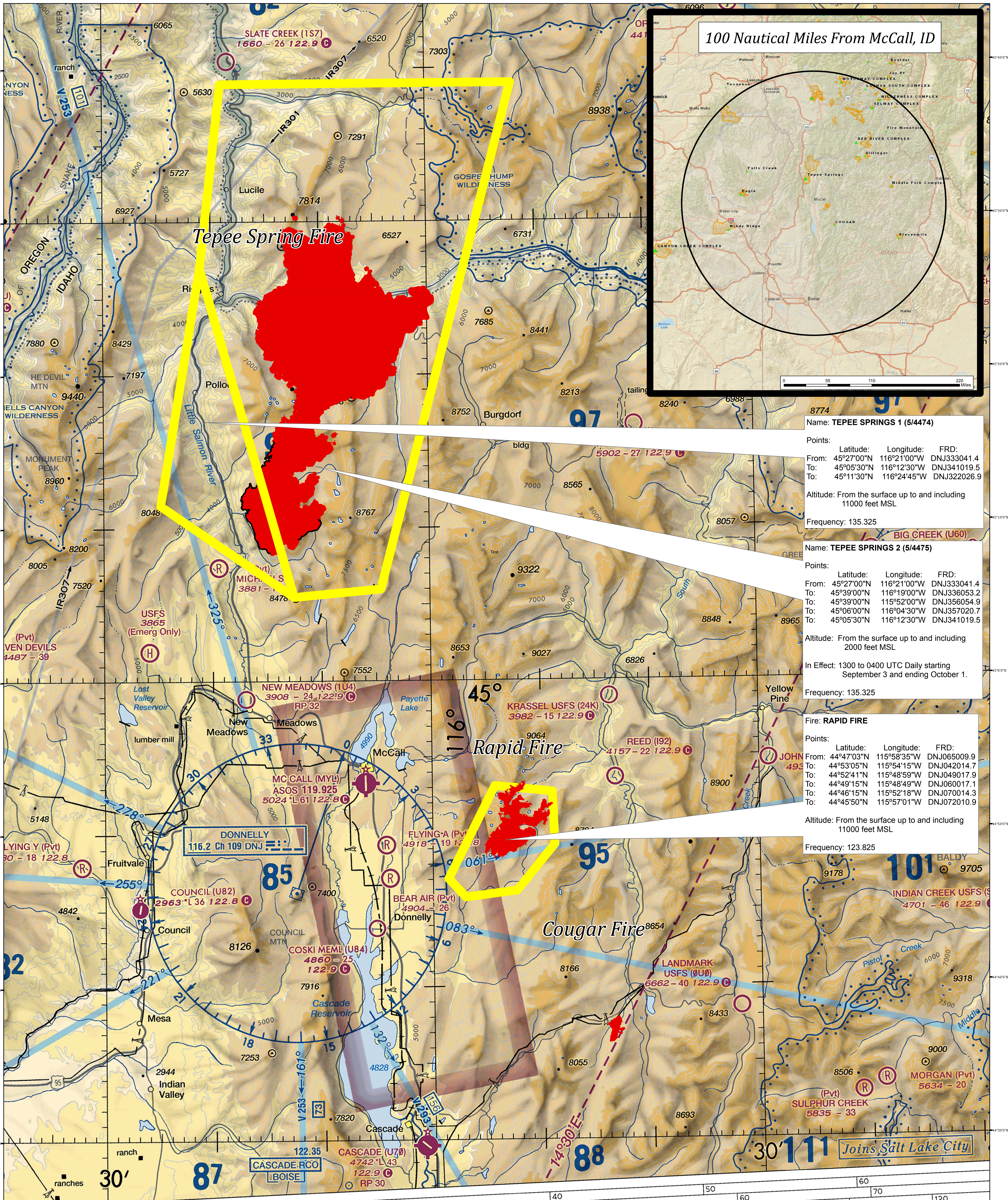
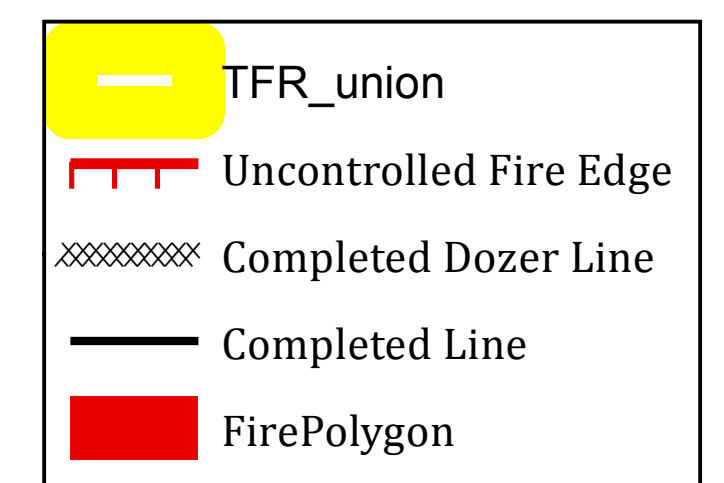
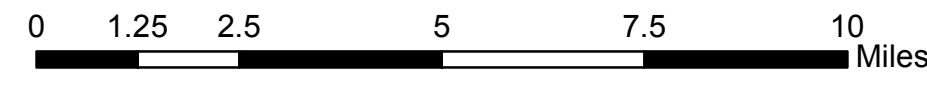


Tepee Springs Fire Area TFR 9/3/2015



100 Nautical Miles From McCall, ID

Name: TEPEE SPRINGS 1 (5/4474)

Points:

From:	Latitude:	Longitude:	FRD:
	45°27'00"N	116°21'00"W	DNJ333041.4
To:	45°05'30"N	116°12'30"W	DNJ341019.5
To:	45°11'30"N	116°24'45"W	DNJ322026.9

Altitude: From the surface up to and including 11000 feet MSL

Frequency: 135.325

Name: TEPEE SPRINGS 2 (5/4475)

Points:

From:	Latitude:	Longitude:	FRD:
	45°27'00"N	116°21'00"W	DNJ333041.4
To:	45°39'00"N	116°19'00"W	DNJ336053.2
To:	45°39'00"N	115°52'00"W	DNJ356054.9
To:	45°06'00"N	116°04'30"W	DNJ357020.7
To:	45°05'30"N	116°12'30"W	DNJ341019.5

Altitude: From the surface up to and including 2000 feet MSL

In Effect: 1300 to 0400 UTC Daily starting September 3 and ending October 1.

Frequency: 135.325

Fire: RAPID FIRE

Points:

From:	Latitude:	Longitude:	FRD:
	44°47'03"N	115°58'35"W	DNJ065009.9
To:	44°53'05"N	115°54'15"W	DNJ042014.7
To:	44°52'41"N	115°48'59"W	DNJ049017.9
To:	44°49'15"N	115°48'49"W	DNJ060017.1
To:	44°46'15"N	115°52'18"W	DNJ070014.3
To:	44°45'50"N	115°57'01"W	DNJ072010.9

Altitude: From the surface up to and including 11000 feet MSL

Frequency: 123.825

Joins Salt Lake City