

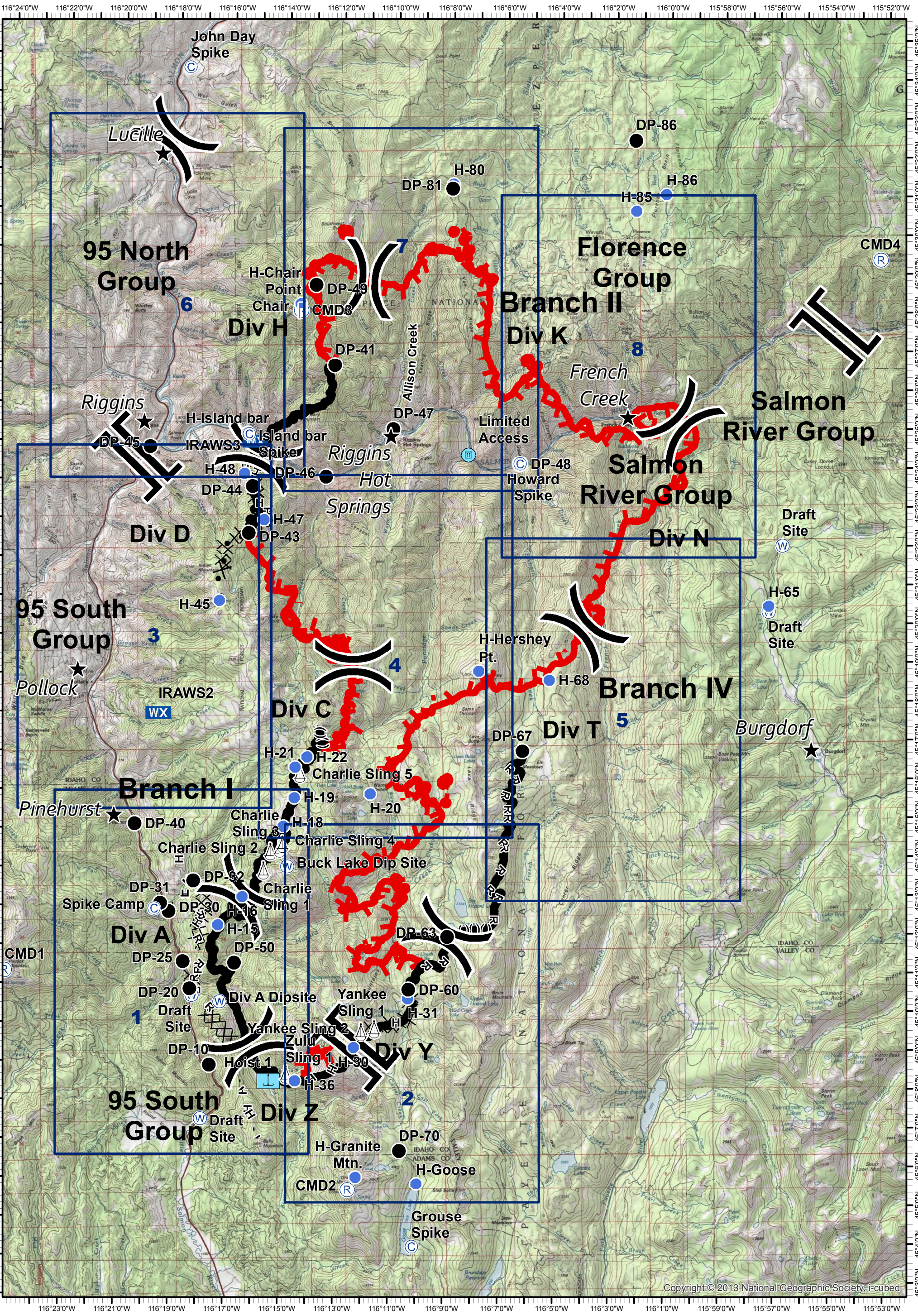
**Tepee Springs Fire**  
**IAP Overview Map**  
 ID-PAF-000192  
 9/4/2015  
 93,102 Acres



0 0.5 1  
 Miles



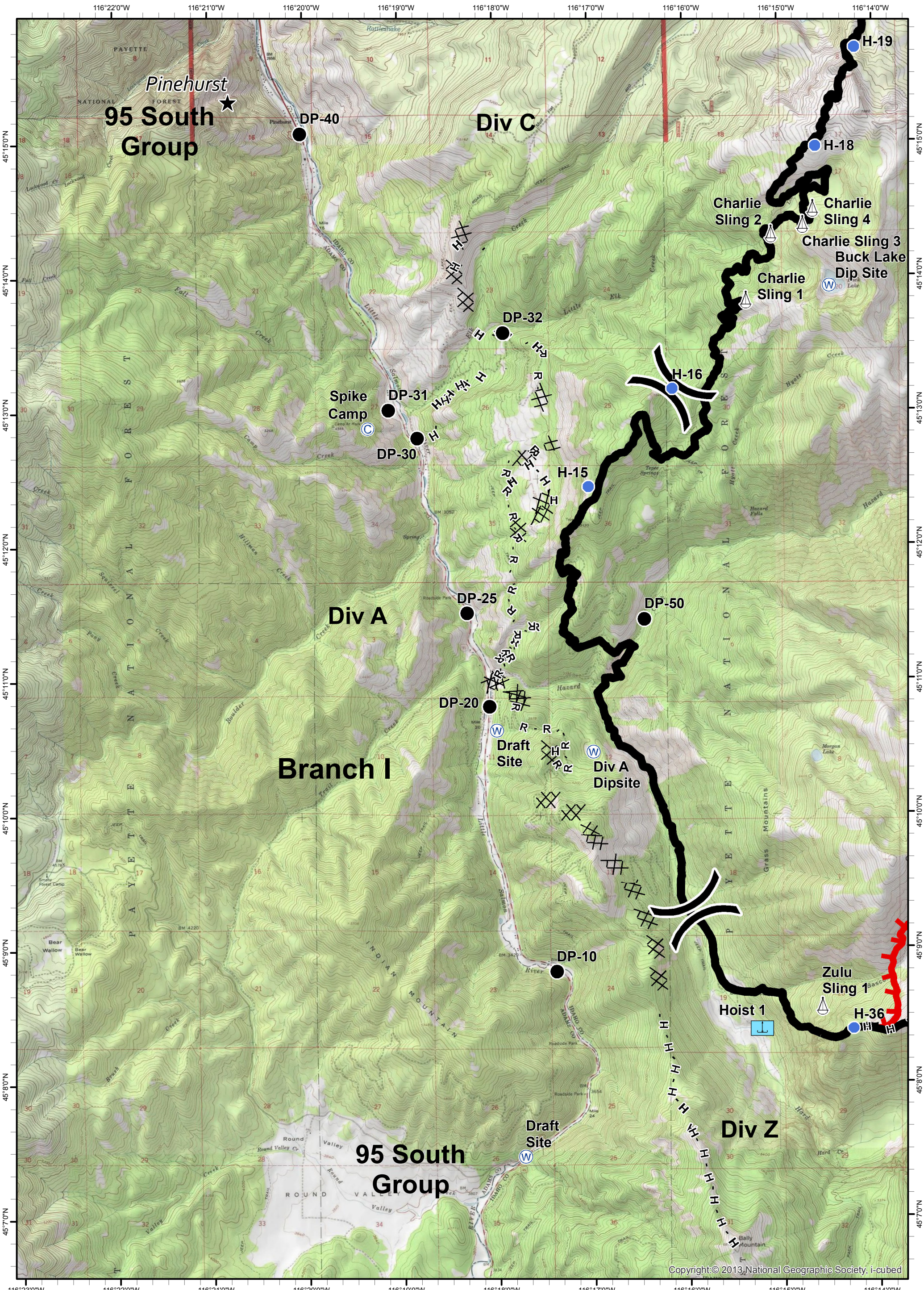
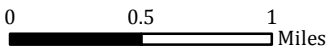
- ★ Cities/Towns
- ( ) Division Breaks
- ⊙ Camp
- Drop Point
- ⚡ Lookout
- Helispot
- ⚙ Sling Site
- ⚙ Hoist Site
- ⊙ Water Source
- WX Mobile Weather Unit
- ⊙ Limited Access
- Uncontrolled Fire Edge
- ( ) ( ) ( ) Ridge / Geographic Feature
- ⊗ Proposed Dozer Line
- Completed Line
- ⊗ ⊗ Completed Dozer Line
- H - H - Hand Line
- R - R - Road as Completed Line



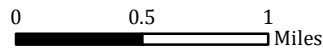
Tepee Springs Fire  
 IAP 1  
 ID-PAF-000192  
 9/4/2015  
 93,102 Acres



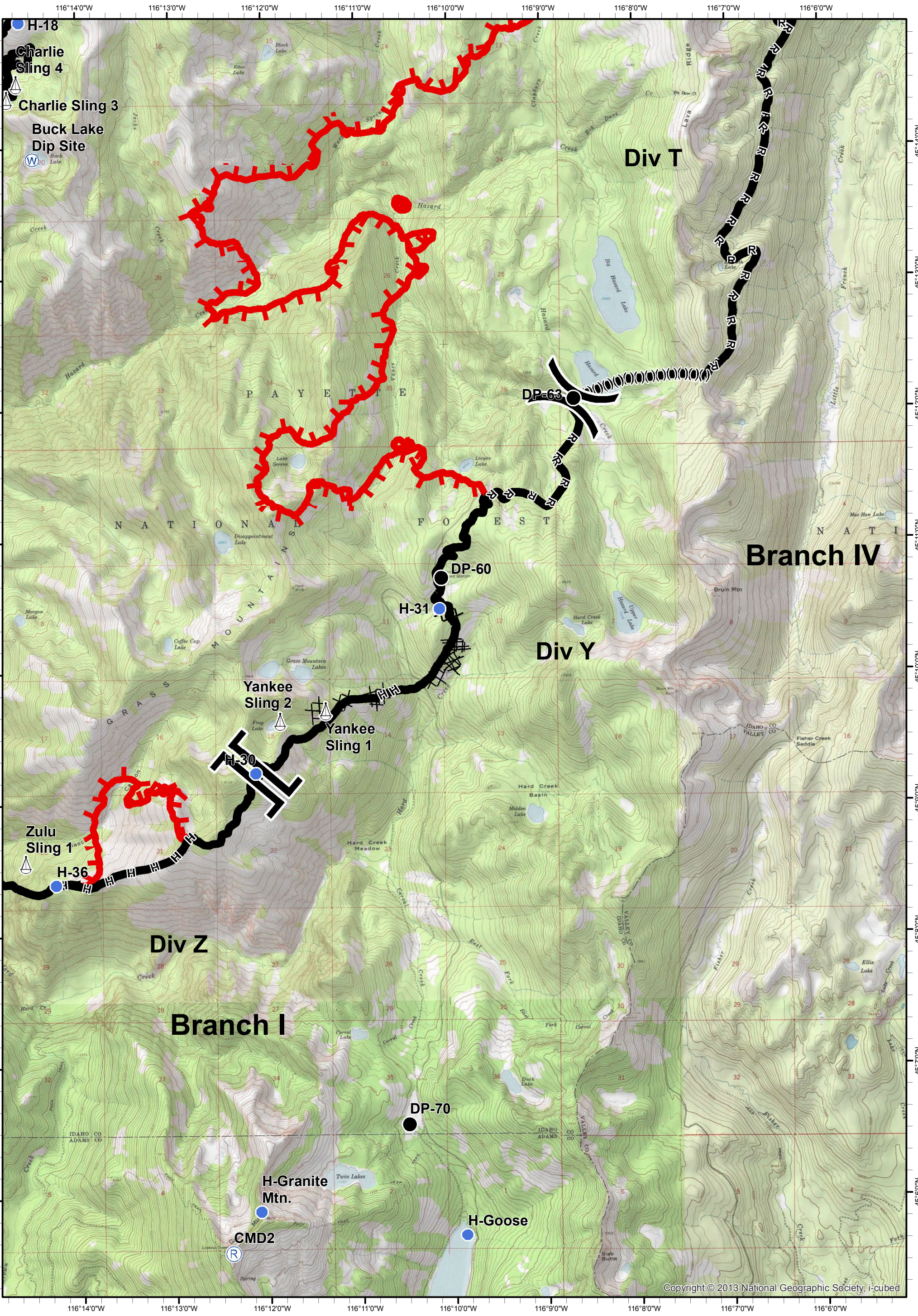
- ★ Cities/Towns
- ( ) Division Breaks
- ⊙ Camp
- Drop Point
- ⚓ Lookout
- Helispot
- ⚙ Sling Site
- ⚙ Hoist Site
- ⊙ Water Source
- WX Mobile Weather Unit
- ⊙ Limited Access
- ⚔ Uncontrolled Fire Edge
- ( ) ( ) ( ) Ridge / Geographic Feature
- ⊙ Proposed Dozer Line
- █ Completed Line
- ⊗ ⊗ Completed Dozer Line
- H - H - Hand Line
- R - R - Road as Completed Line



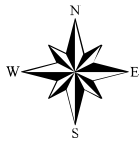
Tepee Springs Fire  
 IAP 2  
 ID-PAF-000192  
 9/4/2015  
 93,102 Acres



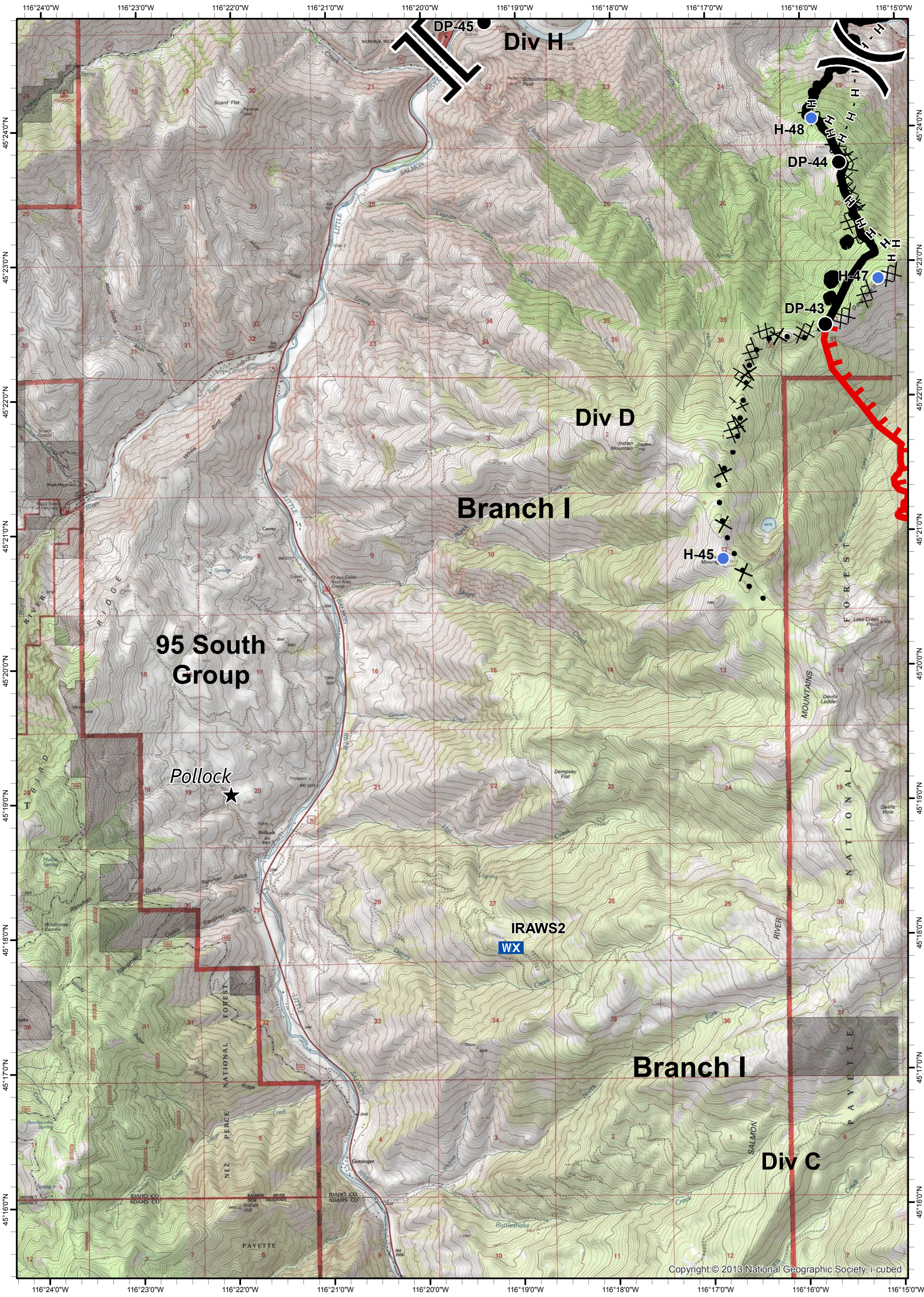
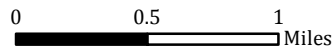
- ★ Cities/Towns
- ( ) Division Breaks
- ⊙ Camp
- Drop Point
- ⚓ Lookout
- Helispot
- ⚓ Sling Site
- ⚓ Hoist Site
- ⊙ Water Source
- WX Mobile Weather Unit
- ⊙ Limited Access
- Uncontrolled Fire Edge
- ( ) ( ) ( ) Ridge / Geographic Feature
- ⊗ Proposed Dozer Line
- Completed Line
- ⊗ ⊗ Completed Dozer Line
- H - H - Hand Line
- R - R - Road as Completed Line



Tepee Springs Fire  
 IAP 3  
 ID-PAF-000192  
 9/4/2015  
 93,102 Acres



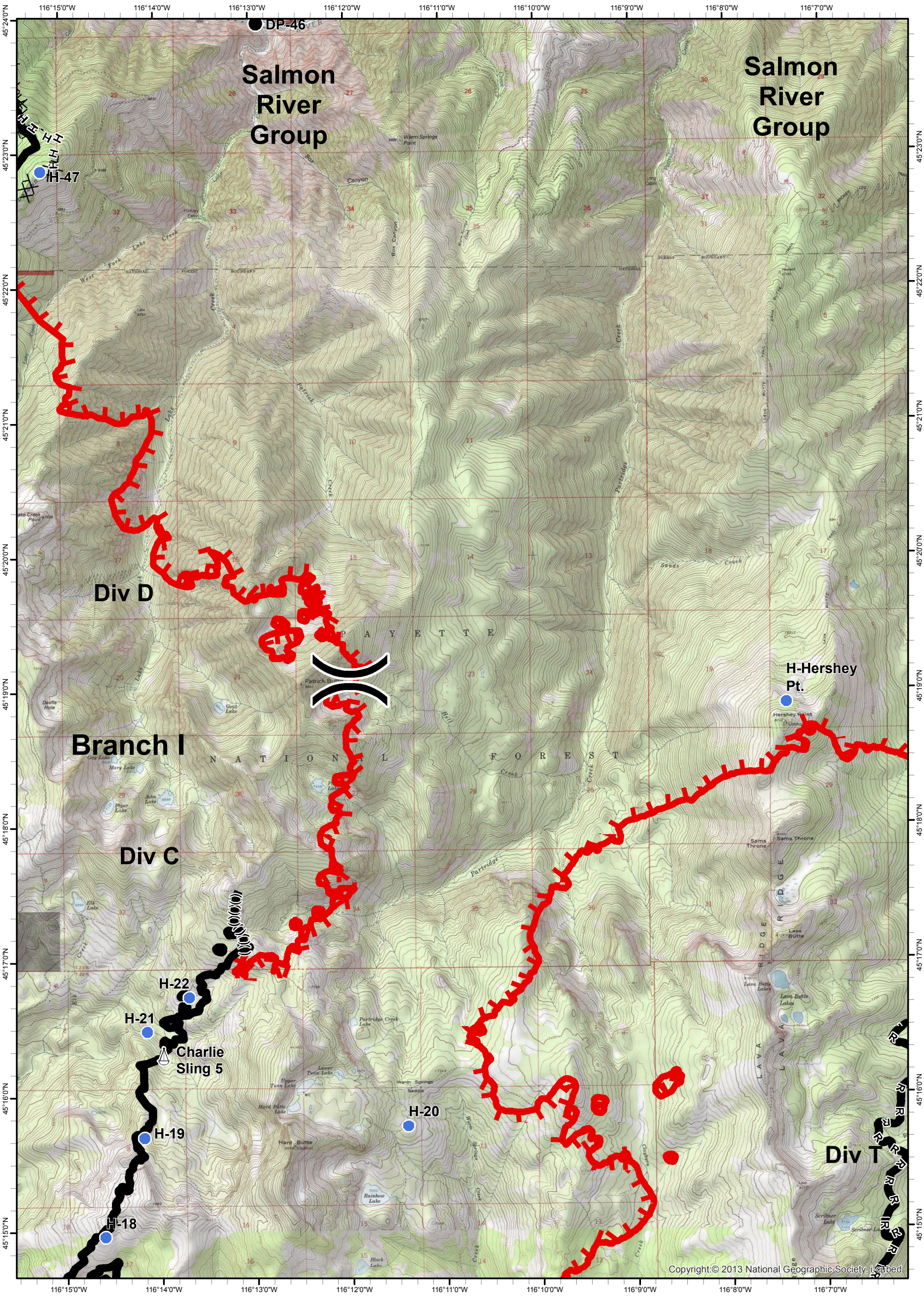
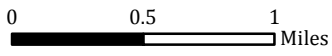
- ★ Cities/Towns
- ( ) Division Breaks
- ⊙ Camp
- Drop Point
- 🚒 Lookout
- Helispot
- ⚙ Sling Site
- 🚰 Hoist Site
- 🌊 Water Source
- WX Mobile Weather Unit
- ⏸ Limited Access
- 🔴 Uncontrolled Fire Edge
- ( )( )( ) Ridge / Geographic Feature
- ⊗ Proposed Dozer Line
- ▬ Completed Line
- ⊗⊗ Completed Dozer Line
- H - H - Hand Line
- R - R - Road as Completed Line



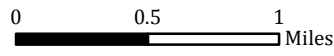
**Tepee Springs Fire**  
**IAP 4**  
**ID-PAF-000192**  
**9/4/2015**  
**93,102 Acres**



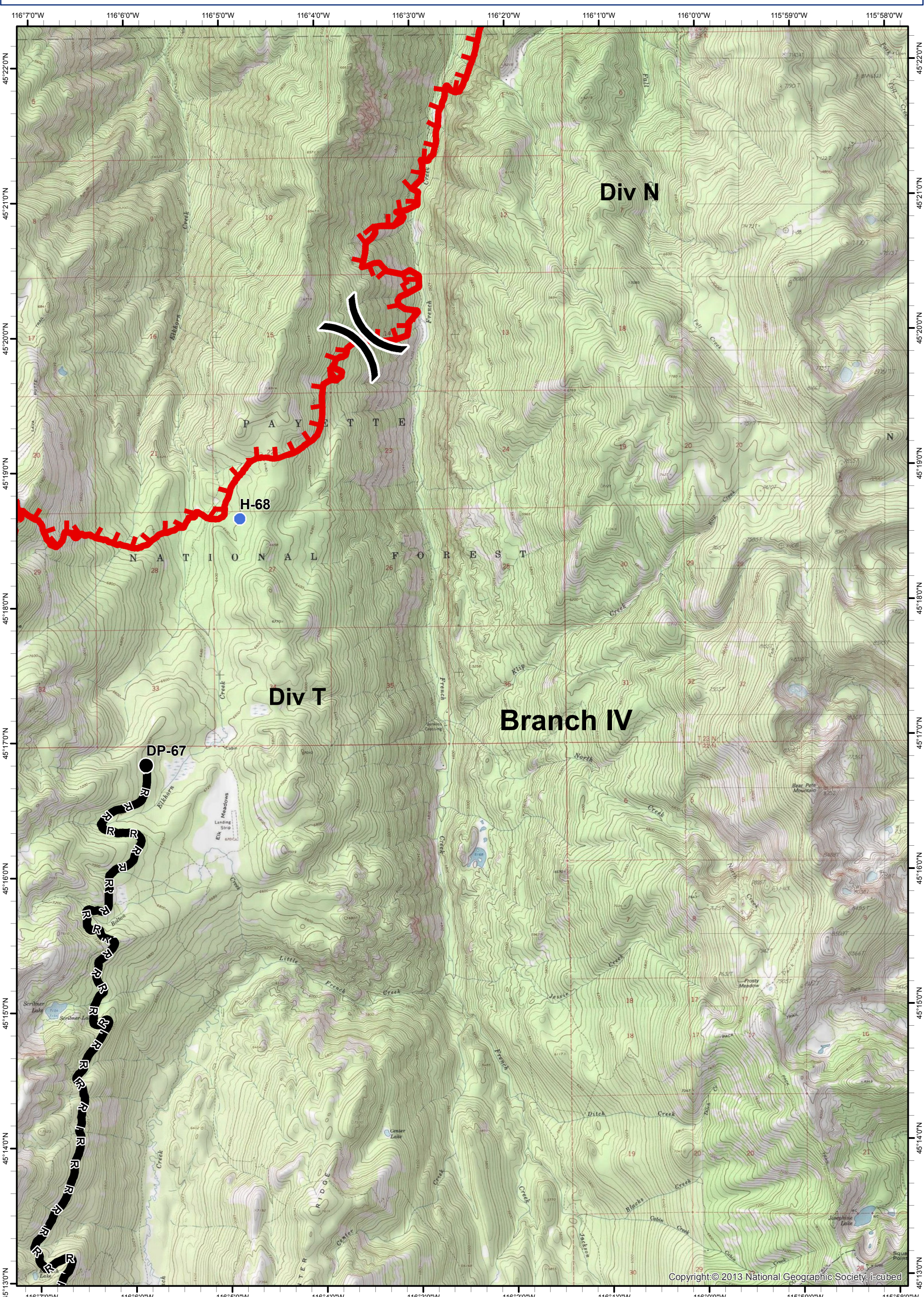
- ★ Cities/Towns
- ( ) Division Breaks
- ⊙ Camp
- Drop Point
- 🚒 Lookout
- Helispot
- ⚙ Sling Site
- 🚰 Hoist Site
- 🌊 Water Source
- WX Mobile Weather Unit
- 🚧 Limited Access
- 🔴 Uncontrolled Fire Edge
- ( )( )( ) Ridge / Geographic Feature
- ⊗ Proposed Dozer Line
- ▬ Completed Line
- ⊗⊗ Completed Dozer Line
- H - H - Hand Line
- R - R - Road as Completed Line



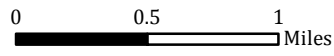
Tepee Springs Fire  
 IAP 5  
 ID-PAF-000192  
 9/4/2015  
 93,102 Acres



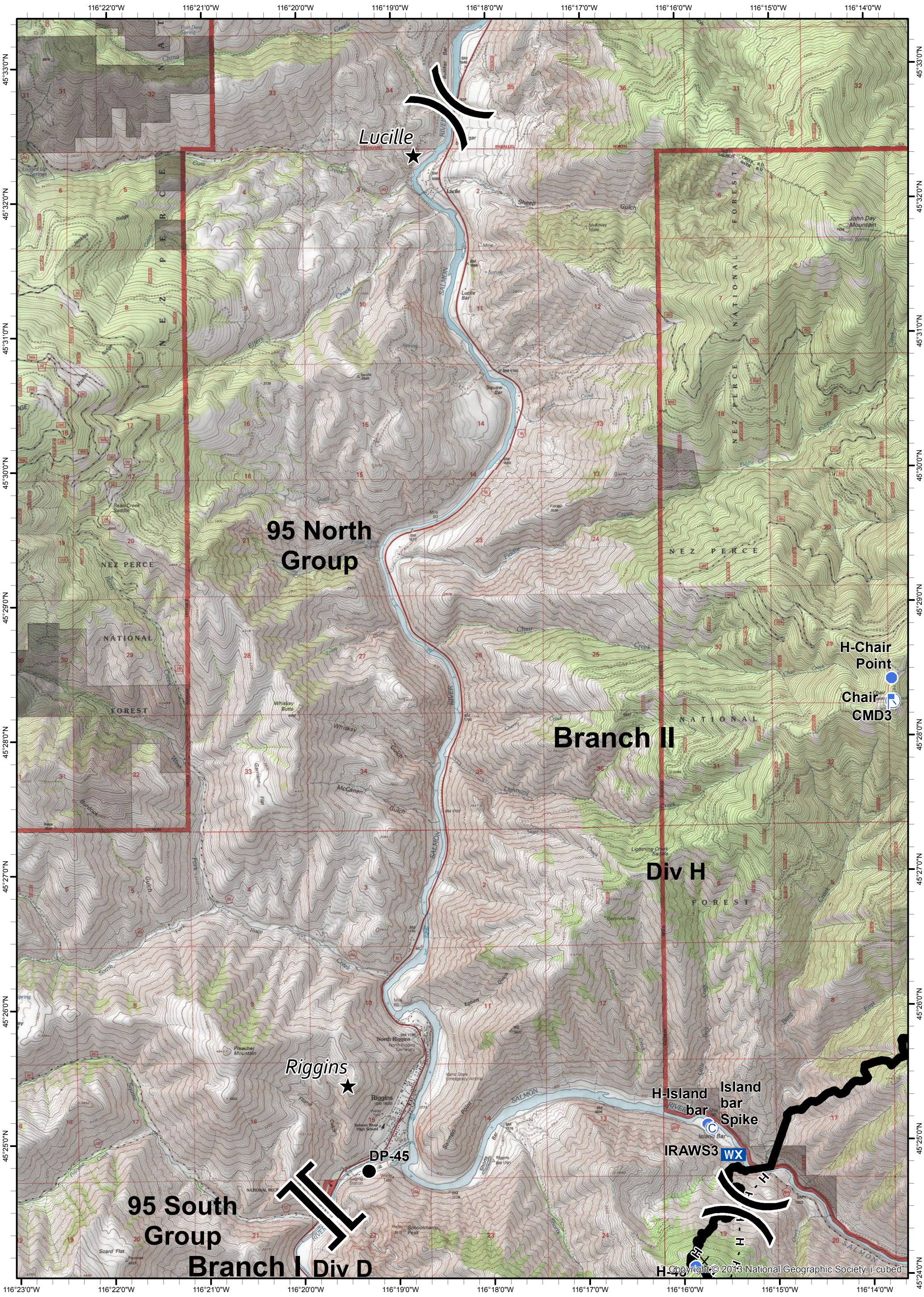
- ★ Cities/Towns
- ( ) Division Breaks
- ⊙ Camp
- Drop Point
- ⚡ Lookout
- Helispot
- ⚙ Sling Site
- ⚙ Hoist Site
- ⊙ Water Source
- WX Mobile Weather Unit
- ⊙ Limited Access
- Uncontrolled Fire Edge
- ( ) ( ) ( ) Ridge / Geographic Feature
- ⊗ Proposed Dozer Line
- Completed Line
- ⊗ ⊗ Completed Dozer Line
- H - H - Hand Line
- R - R - Road as Completed Line



**Tepee Springs Fire**  
**IAP 6**  
**ID-PAF-000192**  
**9/4/2015**  
**93,102 Acres**



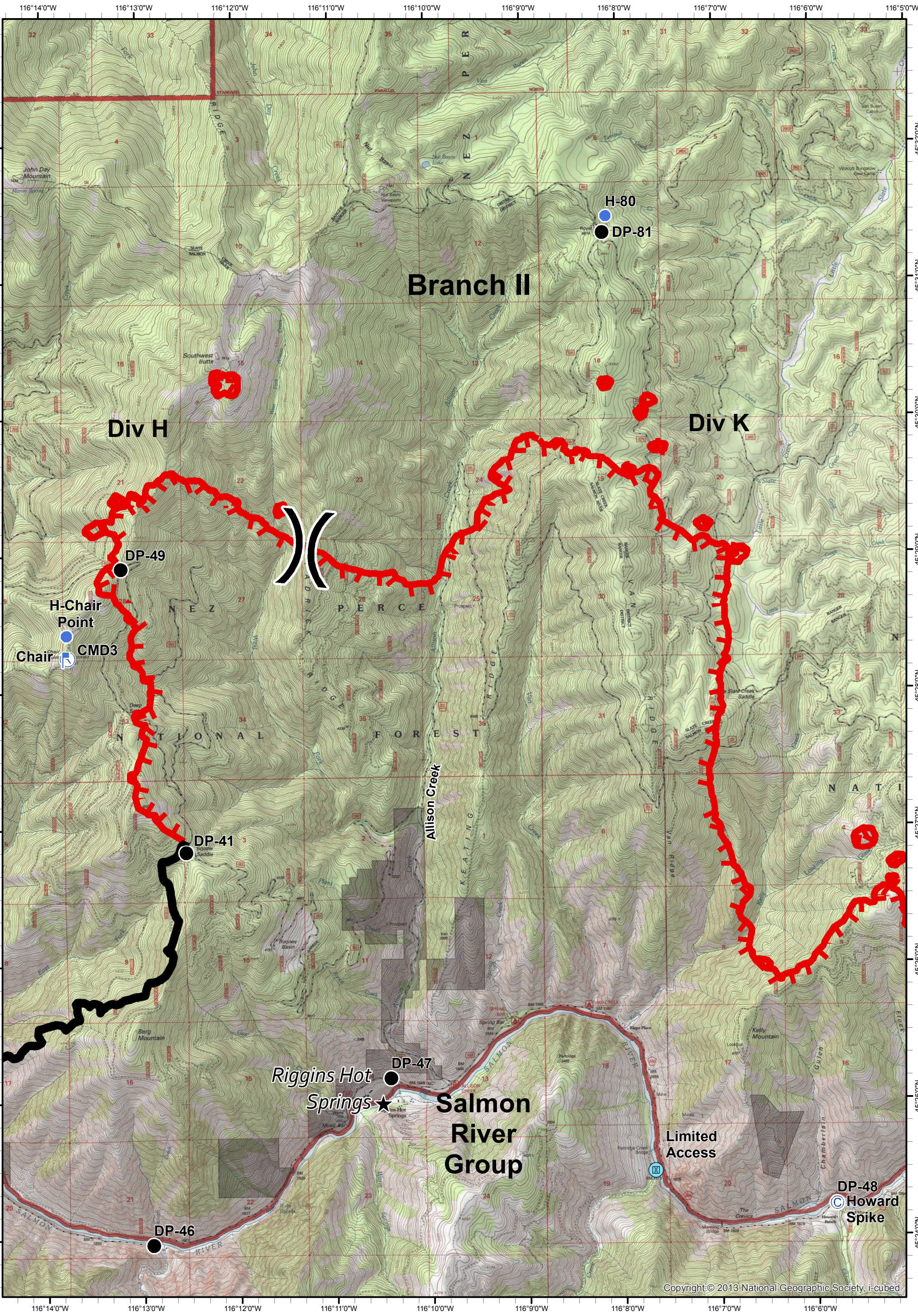
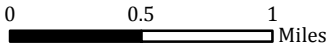
- ★ Cities/Towns
- ( ) Division Breaks
- ⊙ Camp
- Drop Point
- ⚡ Lookout
- Helispot
- ⚓ Sling Site
- ⚙ Hoist Site
- ⊙ Water Source
- WX Mobile Weather Unit
- ⊙ Limited Access
- Uncontrolled Fire Edge
- ( ) ( ) ( ) Ridge / Geographic Feature
- ⊗ Proposed Dozer Line
- Completed Line
- ⊗ ⊗ Completed Dozer Line
- H - H - Hand Line
- R - R - Road as Completed Line



**Tepee Springs Fire**  
**IAP 7**  
**ID-PAF-000192**  
**9/4/2015**  
**93,102 Acres**



- ★ Cities/Towns
- ( ) Division Breaks
- ⊙ Camp
- Drop Point
- 🚒 Lookout
- Helispot
- ⚙ Sling Site
- 🚰 Hoist Site
- 🌊 Water Source
- WX Mobile Weather Unit
- ⚠ Limited Access
- 🔴 Uncontrolled Fire Edge
- ( ) ( ) ( ) Ridge / Geographic Feature
- ⊗ Proposed Dozer Line
- ▬ Completed Line
- ⊗ ⊗ Completed Dozer Line
- H - H - Hand Line
- R - R - Road as Completed Line





Tepee Springs Fire  
IAP 8  
ID-PAF-000192  
9/4/2015  
93,102 Acres



- ★ Cities/Towns
- ( ) Division Breaks
- ⊙ Camp
- Drop Point
- 🚒 Lookout
- Helispot
- ⚙ Sling Site
- 🚰 Hoist Site
- 🌊 Water Source
- WX Mobile Weather Unit
- 🚧 Limited Access
- 🔴 Uncontrolled Fire Edge
- ( ) Ridge / Geographic Feature
- ⊗ Proposed Dozer Line
- ▬ Completed Line
- ⊗⊗ Completed Dozer Line
- H - H - Hand Line
- R - R - Road as Completed Line

