

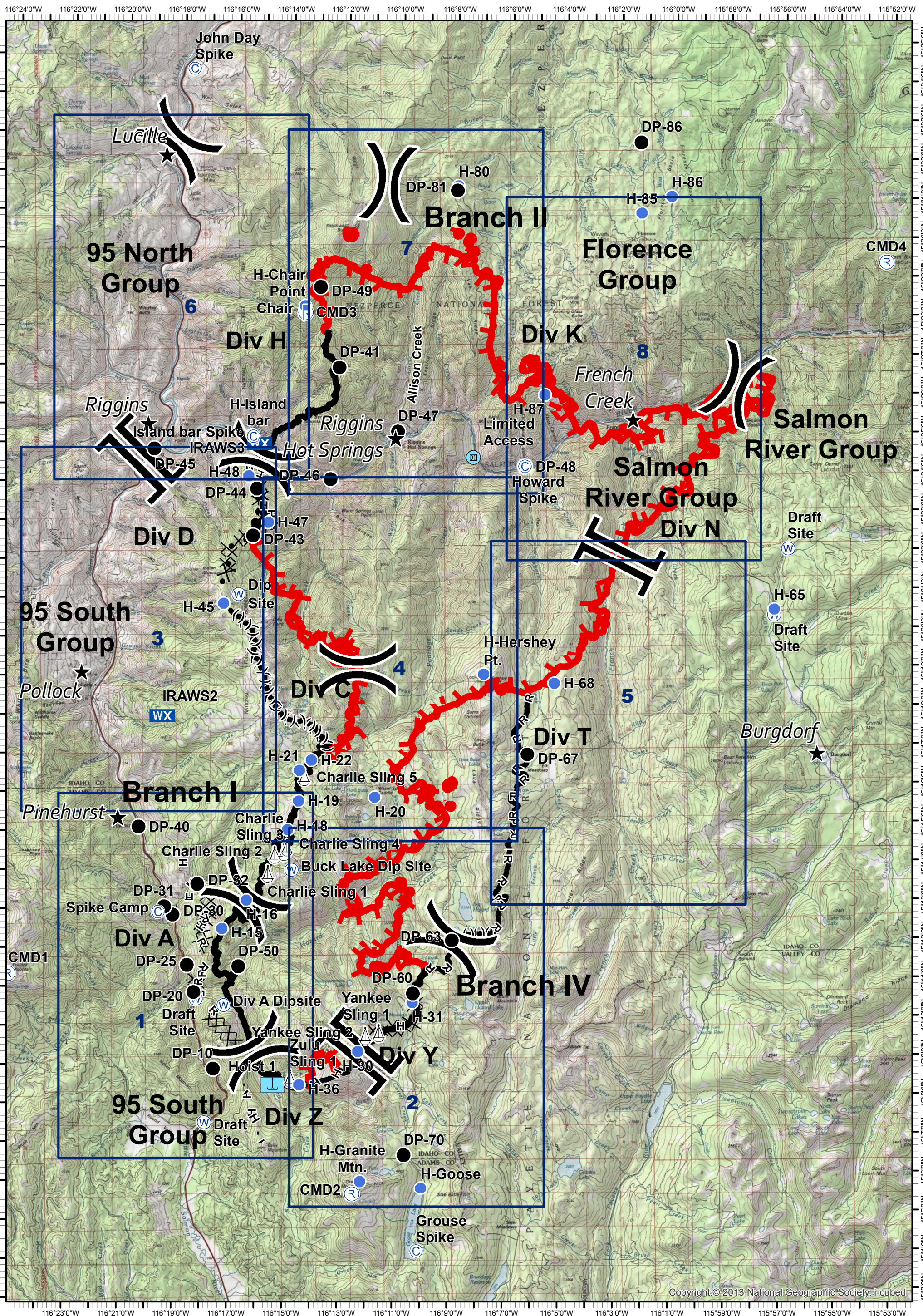
Tepee Springs Fire  
IAP Overview Map  
ID-PAF-000192  
9/5/2015  
94,655 Acres



0 0.5 1  
Miles

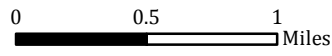


- ★ Cities/Towns
- ⌋ Division Breaks
- ⊙ Camp
- Drop Point
- ⚓ Lookout
- Helispot
- ⚓ Sling Site
- ⚓ Hoist Site
- ⊙ Water Source
- WX Mobile Weather Unit
- ⊙ Limited Access
- Uncontrolled Fire Edge
- ⌋⌋⌋ Ridge / Geographic Feature
- ⊙ Proposed Dozer Line
- Completed Line
- ⌋⌋ Completed Dozer Line
- H - H - Hand Line
- R - R - Road as Completed Line

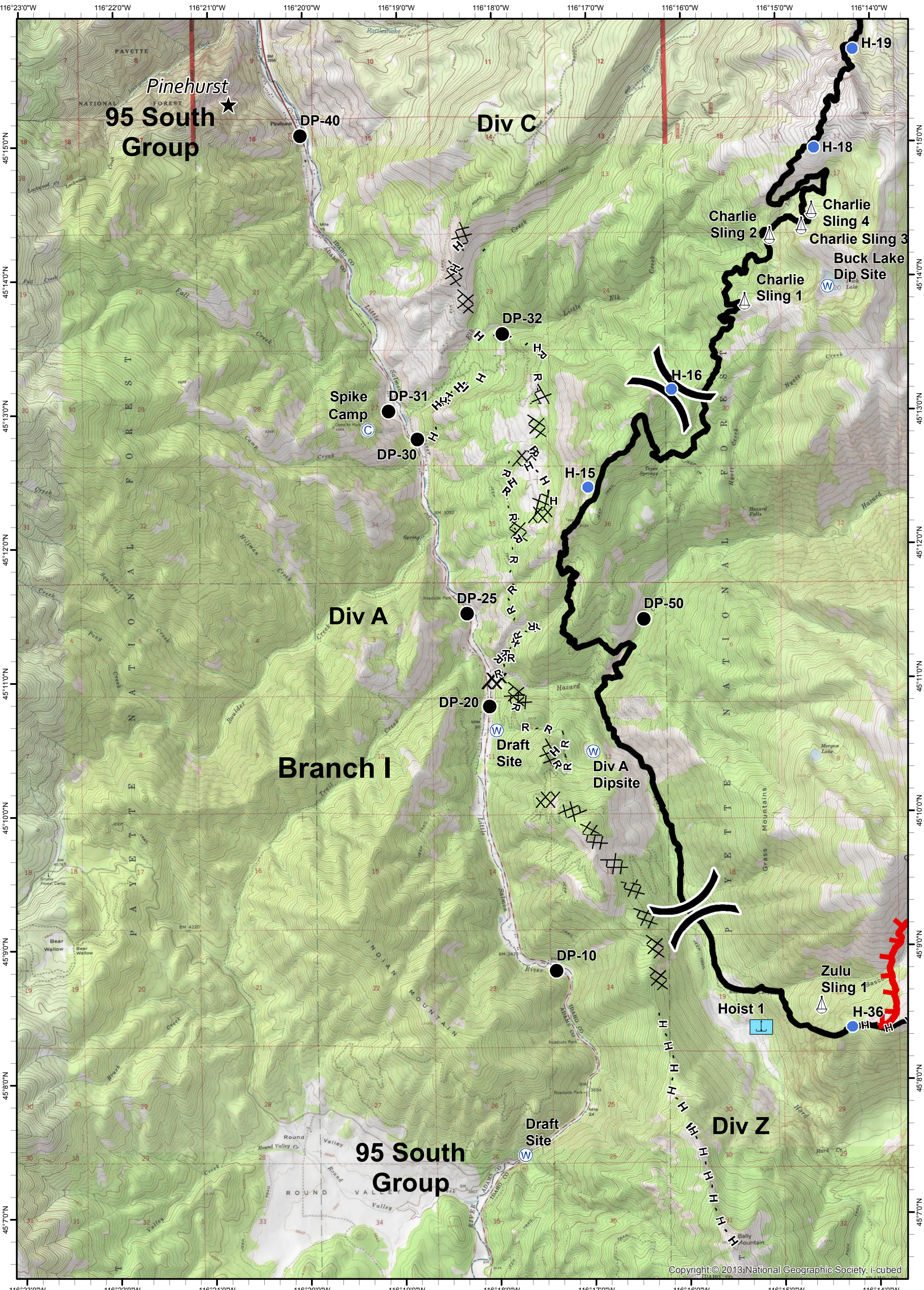




**Tepee Springs Fire**  
**IAP 1**  
**ID-PAF-000192**  
**9/5/2015**  
**94,655 Acres**



- ★ Cities/Towns
- ( ) Division Breaks
- ⊙ Camp
- Drop Point
- 🚒 Lookout
- Helispot
- ⚙ Sling Site
- 🚰 Hoist Site
- 🌊 Water Source
- WX Mobile Weather Unit
- Ⓜ Limited Access
- 🔴 Uncontrolled Fire Edge
- ( ) ( ) ( ) Ridge / Geographic Feature
- ⊗ Proposed Dozer Line
- ▬ Completed Line
- ⊗ ⊗ Completed Dozer Line
- H - H - Hand Line
- R - R - Road as Completed Line

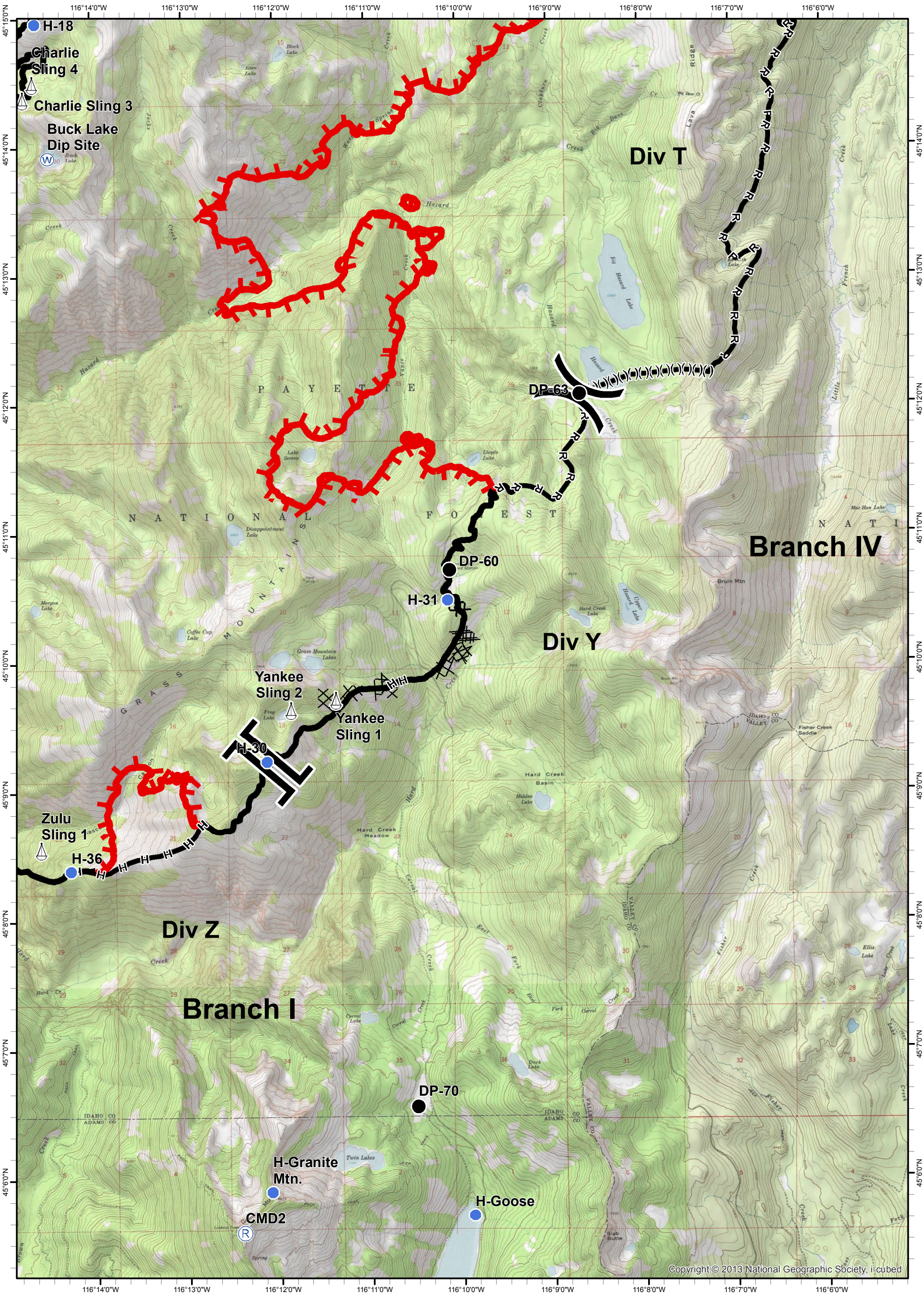
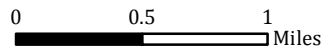




**Tepee Springs Fire**  
**IAP 2**  
**ID-PAF-000192**  
**9/5/2015**  
**94,655 Acres**



- ★ Cities/Towns
- ( ) Division Breaks
- ⊙ Camp
- Drop Point
- ⚓ Lookout
- Helispot
- ⚓ Sling Site
- ⚓ Hoist Site
- ⊙ Water Source
- WX Mobile Weather Unit
- ⊙ Limited Access
- ⚓ Uncontrolled Fire Edge
- ( ) ( ) ( ) Ridge / Geographic Feature
- ⊙ Proposed Dozer Line
- Completed Line
- ⊗ ⊗ Completed Dozer Line
- H - H - Hand Line
- R - R - Road as Completed Line

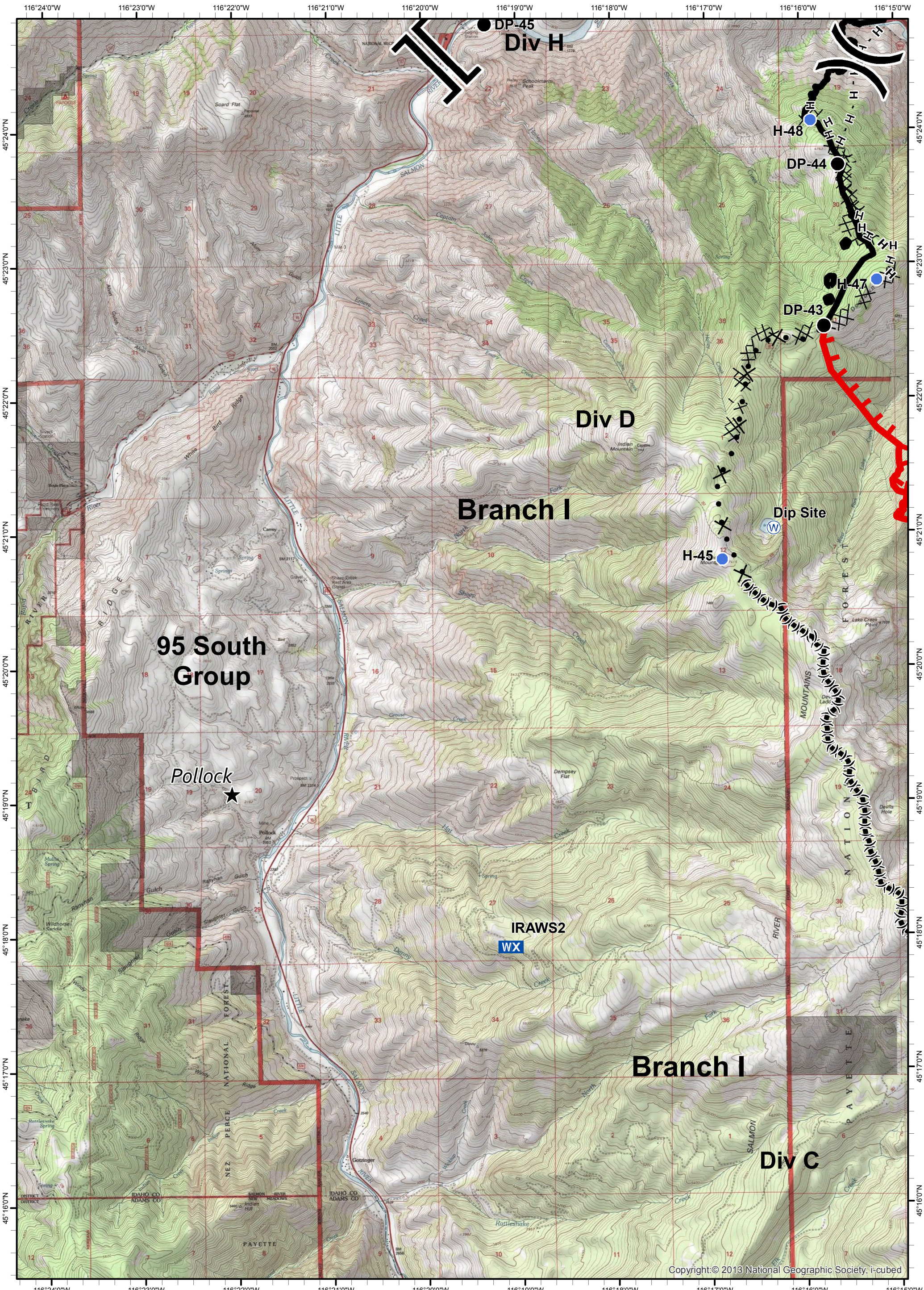
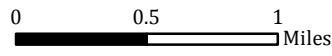




**Tepee Springs Fire**  
**IAP 3**  
**ID-PAF-000192**  
**9/5/2015**  
**94,655 Acres**

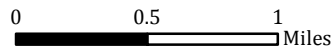


- ★ Cities/Towns
- ⌋ Division Breaks
- Ⓢ Camp
- Drop Point
- ⚓ Lookout
- Helispot
- ⚓ Sling Site
- ⚓ Hoist Site
- Ⓜ Water Source
- WX Mobile Weather Unit
- Ⓜ Limited Access
- ⌋ Uncontrolled Fire Edge
- ( )( ) Ridge / Geographic Feature
- ⊗ Proposed Dozer Line
- ⬜ Completed Line
- ⊗⊗ Completed Dozer Line
- H - H - Hand Line
- R - R - Road as Completed Line

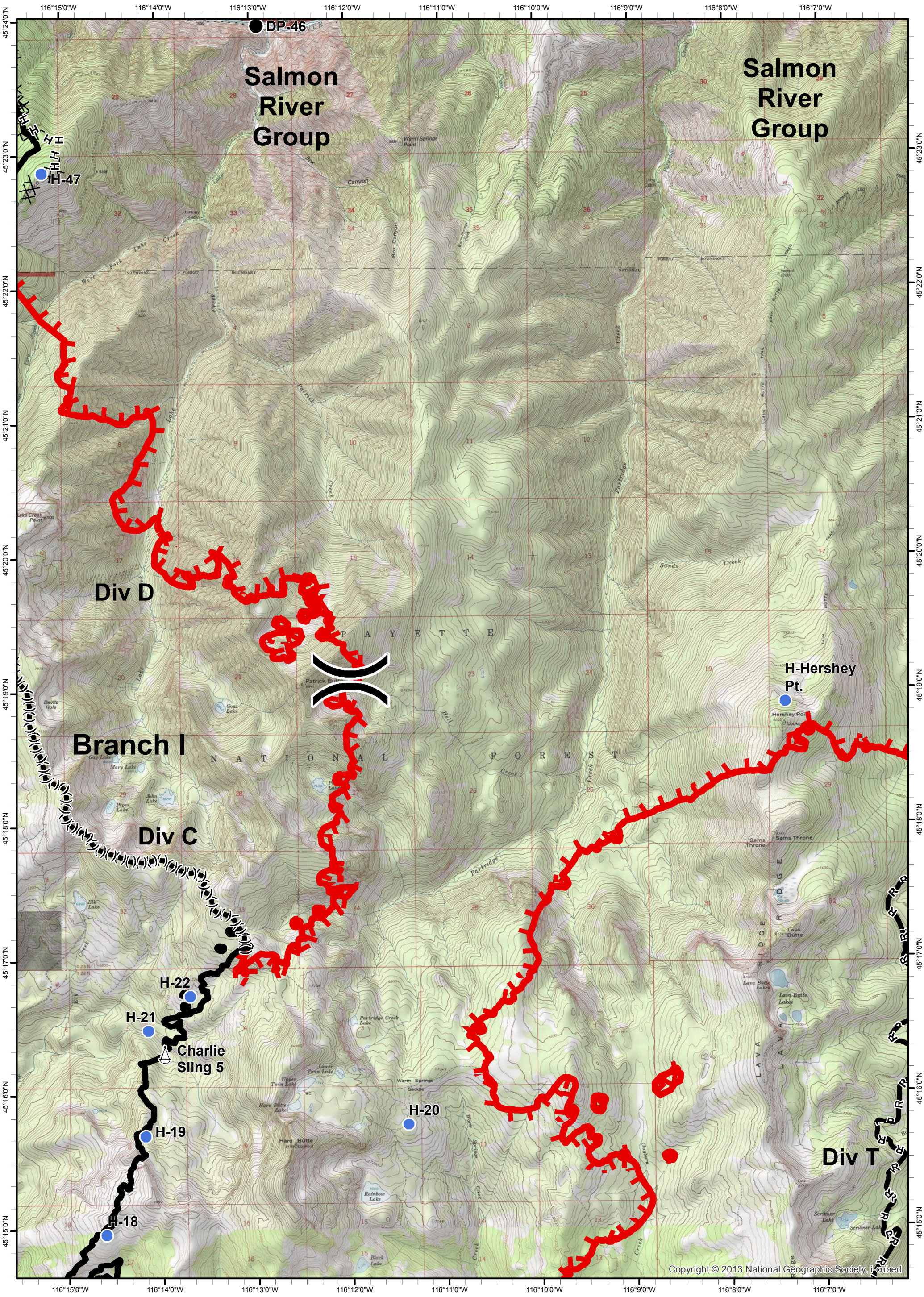




Tepee Springs Fire  
 IAP 4  
 ID-PAF-000192  
 9/5/2015  
 94,655 Acres



- ★ Cities/Towns
- ⌋ Lookout
- Ⓜ Water Source
- ⌚ Uncontrolled Fire Edge
- ⓧ ⓧ Completed Dozer Line
- ⌋ Division Breaks
- Helispot
- Ⓜ WX Mobile Weather Unit
- ⌋ ⌋ ⌋ Ridge / Geographic Feature
- ⓧ ⓧ Proposed Dozer Line
- ⓧ ⓧ Hand Line
- ⓧ ⓧ Road as Completed Line
- Ⓧ Camp
- Ⓧ Sling Site
- Ⓧ Limited Access
- Completed Line
- Drop Point
- Ⓧ Hoist Site

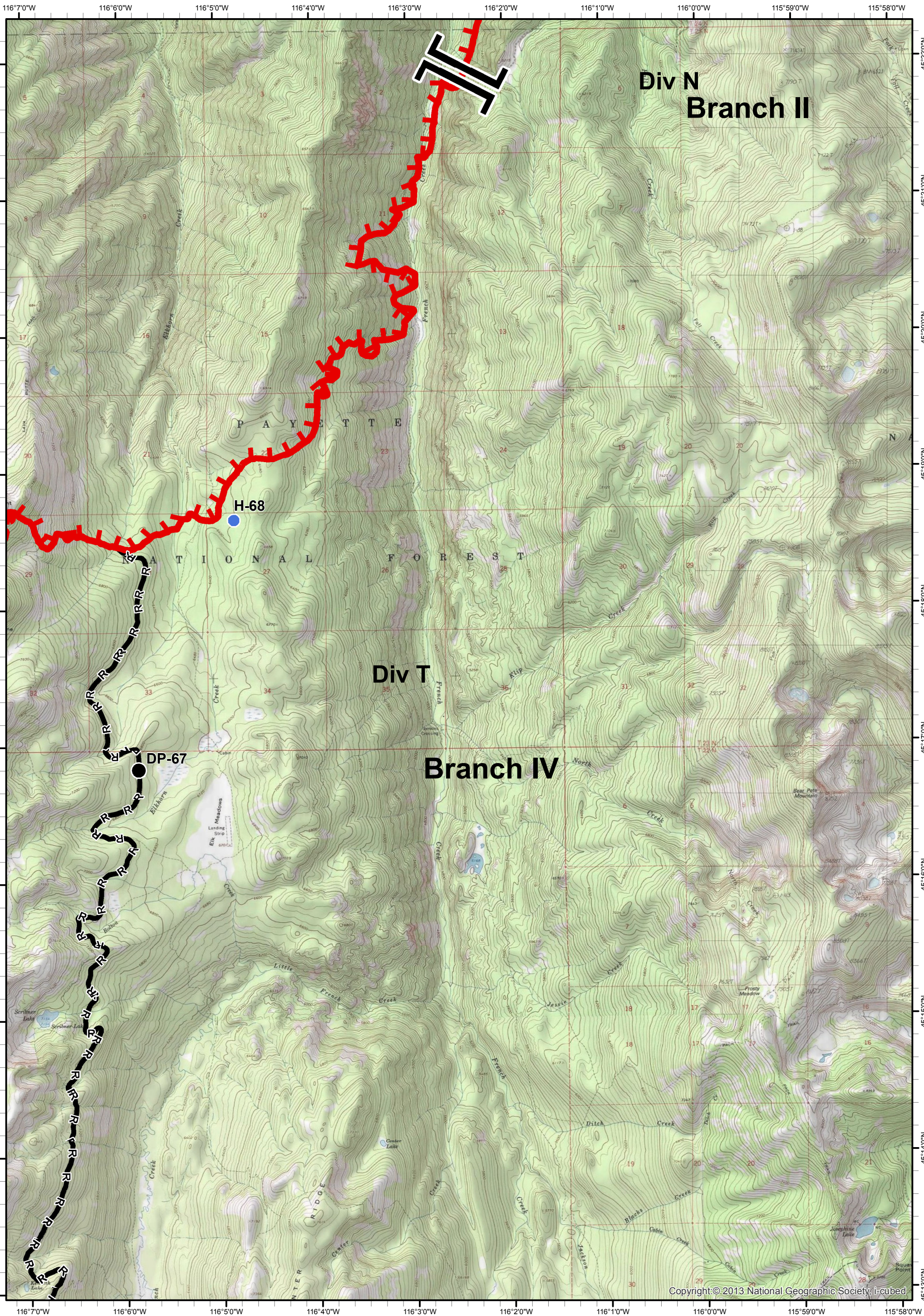
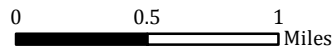




Tepee Springs Fire  
 IAP 5  
 ID-PAF-000192  
 9/5/2015  
 94,655 Acres



- ★ Cities/Towns
- ( ) Division Breaks
- ⊙ Camp
- Drop Point
- ⚡ Lookout
- Helispot
- ⚙ Sling Site
- ⚙ Hoist Site
- Ⓜ Water Source
- WX Mobile Weather Unit
- Ⓜ Limited Access
- ⚡ Uncontrolled Fire Edge
- ( ) ( ) ( ) Ridge / Geographic Feature
- ⊗ Proposed Dozer Line
- ▬ Completed Line
- ⊗ ⊗ Completed Dozer Line
- H - H - Hand Line
- R - R - Road as Completed Line





Tepee Springs Fire  
 IAP 6  
 ID-PAF-000192  
 9/5/2015  
 94,655 Acres

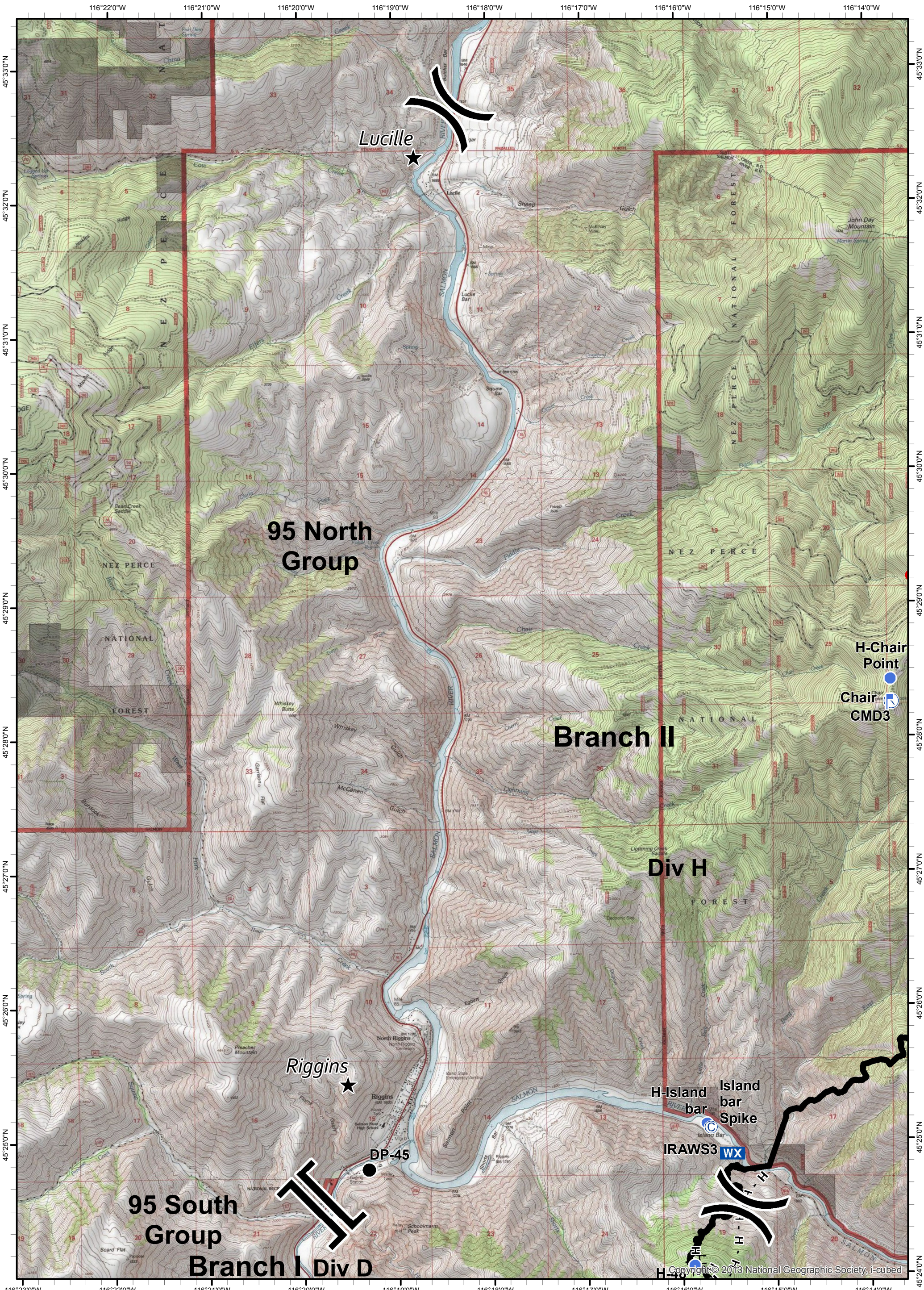
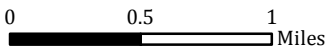


- ★ Cities/Towns
- ( ) Division Breaks
- ⊙ Camp
- Drop Point
- ⚡ Lookout
- Helispot
- ⚓ Sling Site
- ⚙ Hoist Site

- ⊙ Water Source
- WX Mobile Weather Unit
- ⊙ Limited Access

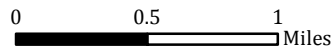
- Uncontrolled Fire Edge
- ( ) ( ) ( ) Ridge / Geographic Feature
- ⊙ Proposed Dozer Line
- Completed Line

- Completed Dozer Line
- H - H - Hand Line
- R - R - Road as Completed Line

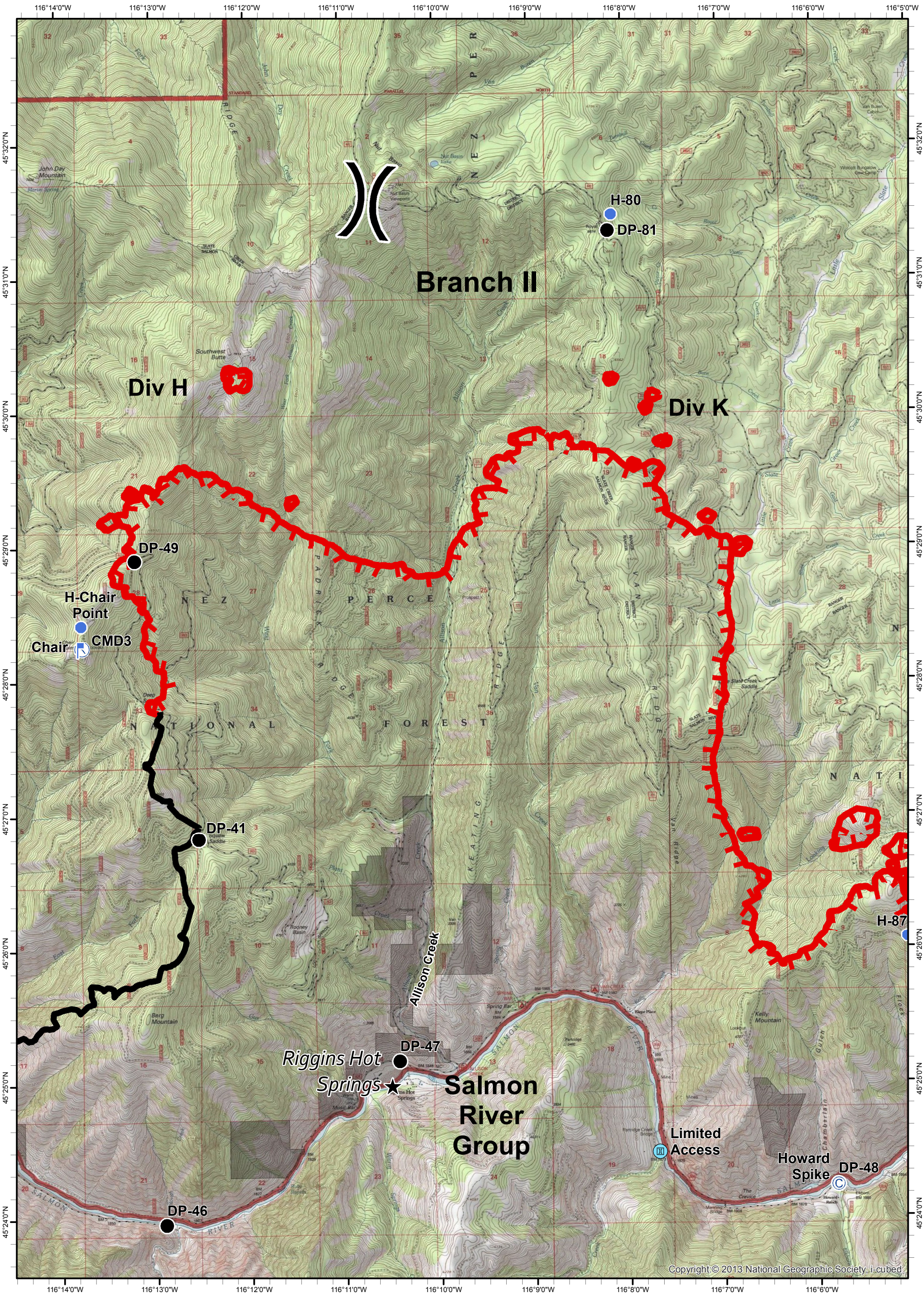




**Tepee Springs Fire**  
**IAP 7**  
**ID-PAF-000192**  
**9/5/2015**  
**94,655 Acres**

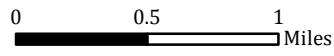


- ★ Cities/Towns
- ( ) Division Breaks
- ⊙ Camp
- Drop Point
- ⚓ Lookout
- Helispot
- ⚓ Sling Site
- ⚓ Hoist Site
- ⊙ Water Source
- WX Mobile Weather Unit
- ⊙ Limited Access
- Uncontrolled Fire Edge
- ( ) ( ) ( ) Ridge / Geographic Feature
- ⊙ Proposed Dozer Line
- Completed Line
- Completed Dozer Line
- H - H - Hand Line
- R - R - Road as Completed Line





Tepee Springs Fire  
 IAP 8  
 ID-PAF-000192  
 9/5/2015  
 94,655 Acres



- ★ Cities/Towns
- ( ) Division Breaks
- ⊙ Camp
- Drop Point
- ⚡ Lookout
- Helispot
- ⚓ Sling Site
- ⚙ Hoist Site
- ⊙ Water Source
- WX Mobile Weather Unit
- ⊘ Limited Access
- 🔴 Uncontrolled Fire Edge
- ( )( )( ) Ridge / Geographic Feature
- ⊗ Proposed Dozer Line
- ▬ Completed Line
- ⊗⊗ Completed Dozer Line
- H - H - Hand Line
- R - R - Road as Completed Line

