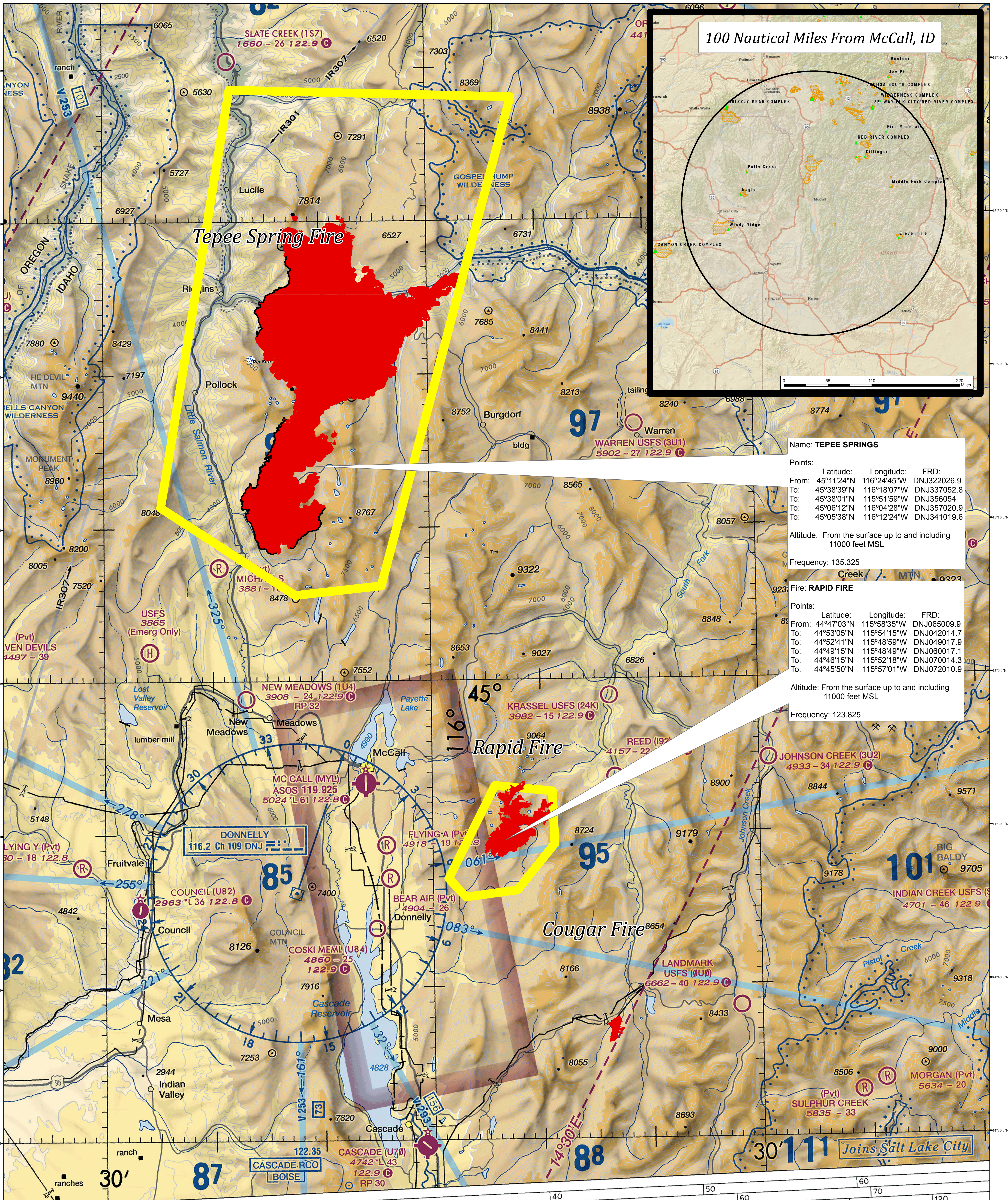
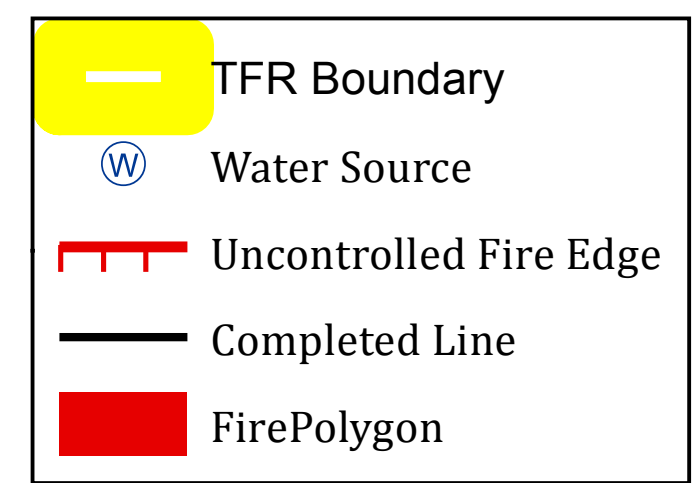
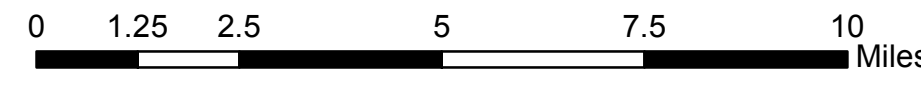


# Tepee Springs Fire Area TFR 9/5/2015



100 Nautical Miles From McCall, ID

Name: **TEEPee SPRINGS**

Points: Latitude: Longitude: FRD:  
 From: 45°11'24"N 116°24'45"W DNJ322026.9  
 To: 45°38'39"N 116°18'07"W DNJ337052.8  
 To: 45°38'01"N 115°51'59"W DNJ356054  
 To: 45°06'12"N 116°04'28"W DNJ357020.9  
 To: 45°05'38"N 116°12'24"W DNJ341019.6

Altitude: From the surface up to and including 11000 feet MSL

Frequency: 135.325

Fire: **RAPID FIRE**

Points: Latitude: Longitude: FRD:  
 From: 44°47'03"N 115°58'35"W DNJ065009.9  
 To: 44°53'05"N 115°54'15"W DNJ042014.7  
 To: 44°52'41"N 115°48'59"W DNJ049017.9  
 To: 44°49'15"N 115°48'49"W DNJ060017.1  
 To: 44°46'15"N 115°52'18"W DNJ070014.3  
 To: 44°45'50"N 115°57'01"W DNJ072010.9

Altitude: From the surface up to and including 11000 feet MSL

Frequency: 123.825

Joins Salt Lake City