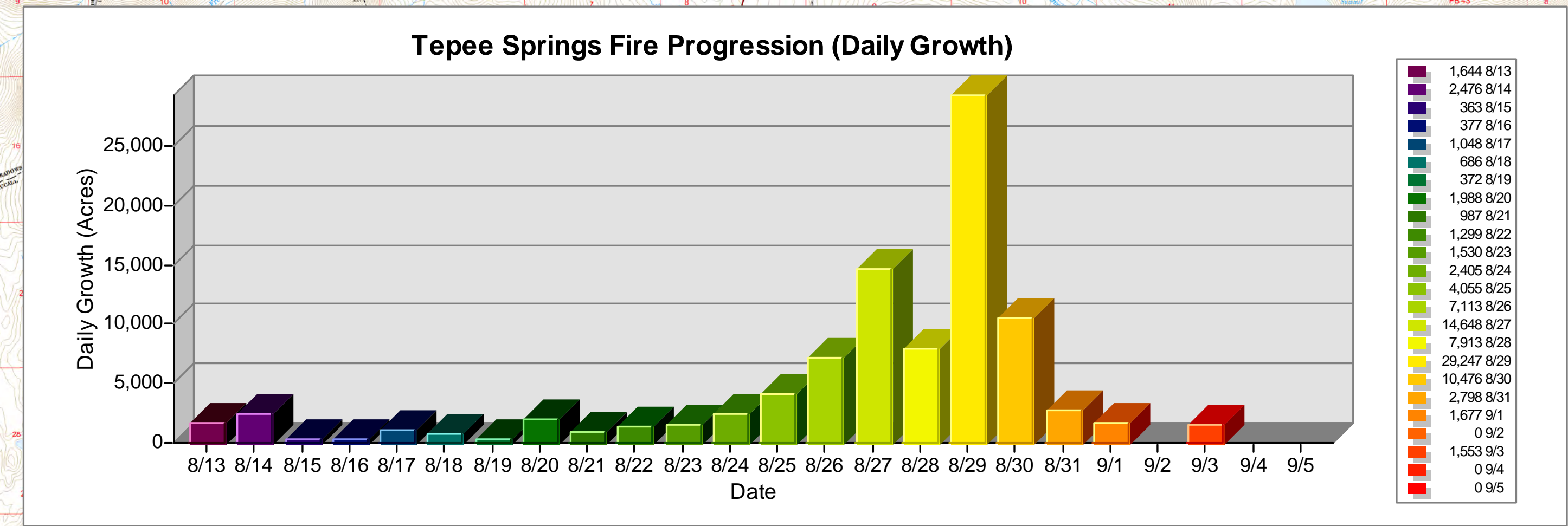


| Color | Date | Daily Growth | Total Acres |
|---------------|-----------|--------------|-------------|
| Dark Purple | 8/13/2015 | 1,644 | 1,644 |
| Purple | 8/14/2015 | 2,476 | 4,120 |
| Dark Blue | 8/15/2015 | 363 | 4,483 |
| Blue | 8/16/2015 | 377 | 4,860 |
| Teal | 8/17/2015 | 1,048 | 5,907 |
| Green-Teal | 8/18/2015 | 686 | 6,594 |
| Green | 8/19/2015 | 372 | 6,966 |
| Light Green | 8/20/2015 | 1,988 | 8,953 |
| Lighter Green | 8/21/2015 | 987 | 9,940 |
| Yellow-Green | 8/22/2015 | 1,299 | 11,240 |
| Yellow | 8/23/2015 | 1,530 | 12,770 |
| Light Yellow | 8/24/2015 | 2,405 | 15,175 |
| Yellow-Green | 8/25/2015 | 4,055 | 19,230 |
| Yellow | 8/26/2015 | 7,113 | 26,343 |
| Light Yellow | 8/27/2015 | 14,649 | 40,992 |
| Yellow | 8/28/2015 | 7,913 | 48,883 |
| Light Yellow | 8/29/2015 | 29,247 | 78,130 |
| Yellow | 8/30/2015 | 10,476 | 88,628 |
| Orange | 8/31/2015 | 2,795 | 91,423 |
| Light Orange | 9/1/2015 | 1,677 | 93,102 |
| Orange | 9/2/2015 | 0 | 93,102 |
| Dark Orange | 9/3/2015 | 1,553 | 94,655 |
| Red-Orange | 9/4/2015 | 0 | 94,655 |
| Red | 9/5/2015 | 0 | 94,655 |



Progression
Tepee Springs
94,655 Acres
ID-PAF-000192
9/6/2015
 Printed: 9/6/2015 at 1200hrs

| Tepee Springs Historical Weather and 7 Day Weather Awareness Matrix Output | | | | | | | | | | | | | | | | | | | | | | | | | | | | |
|--|---------|---------|---------|---------|---------|---------|---------|---------|---------|---------|---------|---------|---------|---------------------------------------|---------|---------|---------|--------|-------|-------|-------|-------|-------|-------|-------|-------|---------------------------|------------------------|
| Observed Fire Weather from Teapot RAWS (101220) | | | | | | | | | | | | | | 7 Day Weather Awareness Matrix Output | | | | | | | | | | | | | | |
| Observed Conditions: | 14-Aug | 15-Aug | 16-Aug | 17-Aug | 18-Aug | 19-Aug | 20-Aug | 21-Aug | 22-Aug | 23-Aug | 24-Aug | 25-Aug | 26-Aug | 27-Aug | 28-Aug | 29-Aug | 30-Aug | 31-Aug | 1-Sep | 2-Sep | 3-Sep | 4-Sep | 5-Sep | 6-Sep | 7-Sep | 8-Sep | 9-Sep | Forecasted Conditions: |
| MinT/MaxT | 53/78 | 53/78 | 45/75 | 48/75 | 47/77 | 49/78 | 49/83 | 52/80 | 48/77 | 45/78 | 53/86 | 51/81 | 54/90 | 51/81 | 53/85 | 53/84 | 42/73 | 45/80 | 56/82 | 45/74 | 45/60 | 41/58 | 37/43 | 39/72 | 35/74 | 39/74 | MinT/MaxT | |
| Moist/MoistH | 75%/72% | 69%/72% | 62%/70% | 58%/73% | 62%/71% | 59%/72% | 60%/71% | 61%/71% | 62%/70% | 60%/69% | 64%/74% | 64%/74% | 61%/70% | 62%/70% | 60%/68% | 54%/71% | 53%/70% | 42/73 | 45/80 | 56/82 | 45/74 | 45/60 | 41/58 | 37/43 | 39/72 | 35/74 | Moist/MoistH | |
| Wind Afternoon | W 3 | W 3 | W 3 | W 3 | W 3 | W 3 | W 3 | W 3 | W 3 | W 3 | W 3 | W 3 | W 3 | W 3 | W 3 | W 3 | W 3 | W 3 | W 3 | W 3 | W 3 | W 3 | W 3 | W 3 | W 3 | W 3 | Wind Afternoon | |
| Haines Index | 2 | 2 | 2 | 2 | 2 | 2 | 2 | 2 | 2 | 2 | 2 | 2 | 2 | 2 | 2 | 2 | 2 | 2 | 2 | 2 | 2 | 2 | 2 | 2 | 2 | 2 | Haines Index | |
| Daily Fire Growth (acres) | 2,476 | 363 | 377 | 1,048 | 686 | 372 | 1,988 | 987 | 1,299 | 1,530 | 2,405 | 4,055 | 7,113 | 14,649 | 7,913 | 29,247 | 10,476 | 2,795 | 1,677 | 1,932 | 0 | 50% | 50% | 30% | 30% | 20% | Daily Fire Growth (acres) | |
| | | | | | | | | | | | | | | | | | | | | | | | | | | | | |