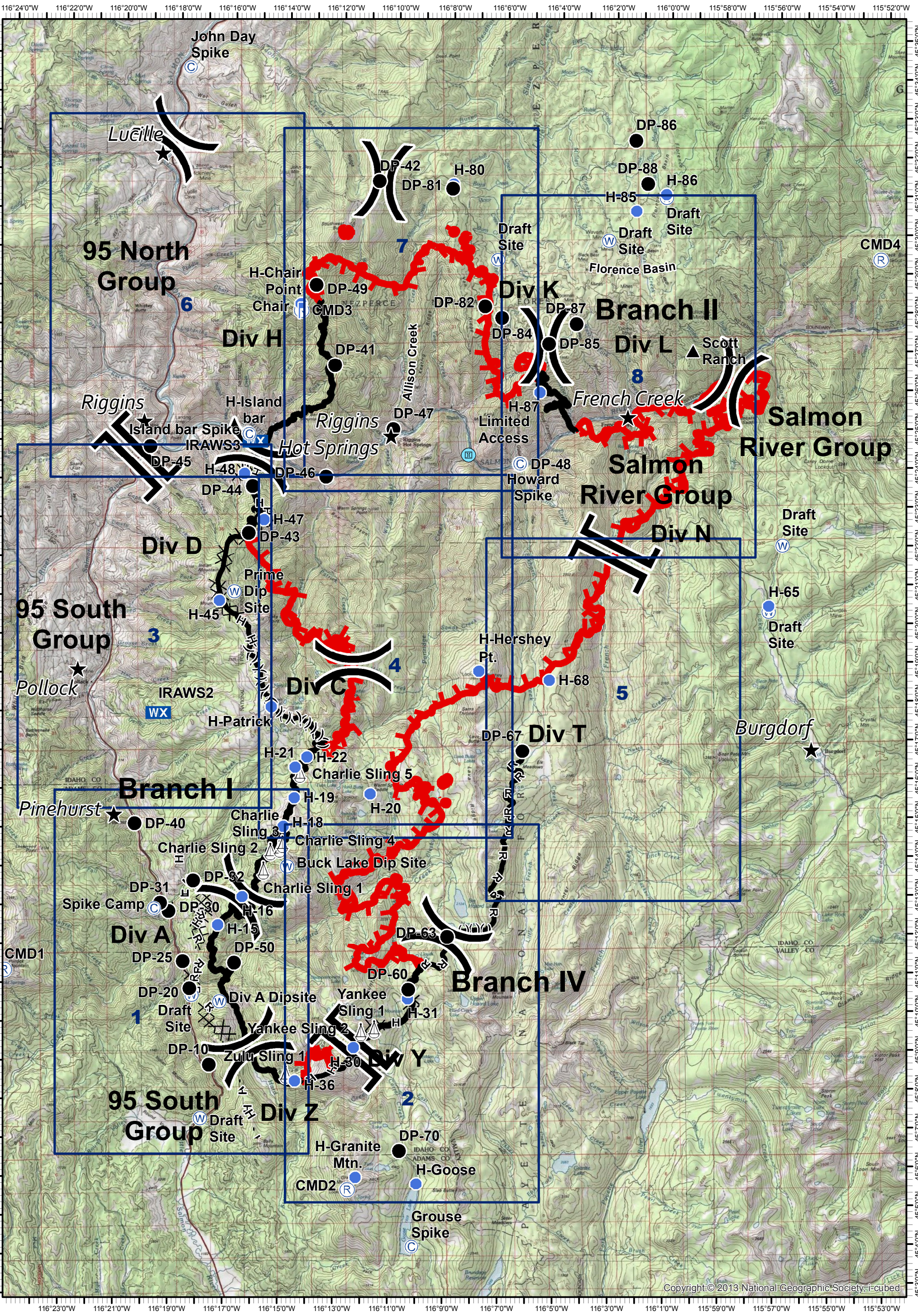


Tepee Springs Fire
IAP Overview Map
 ID-PAF-000192
 9/8/2015
 94,655 Acres

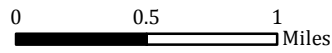


0 0.5 1
 Miles

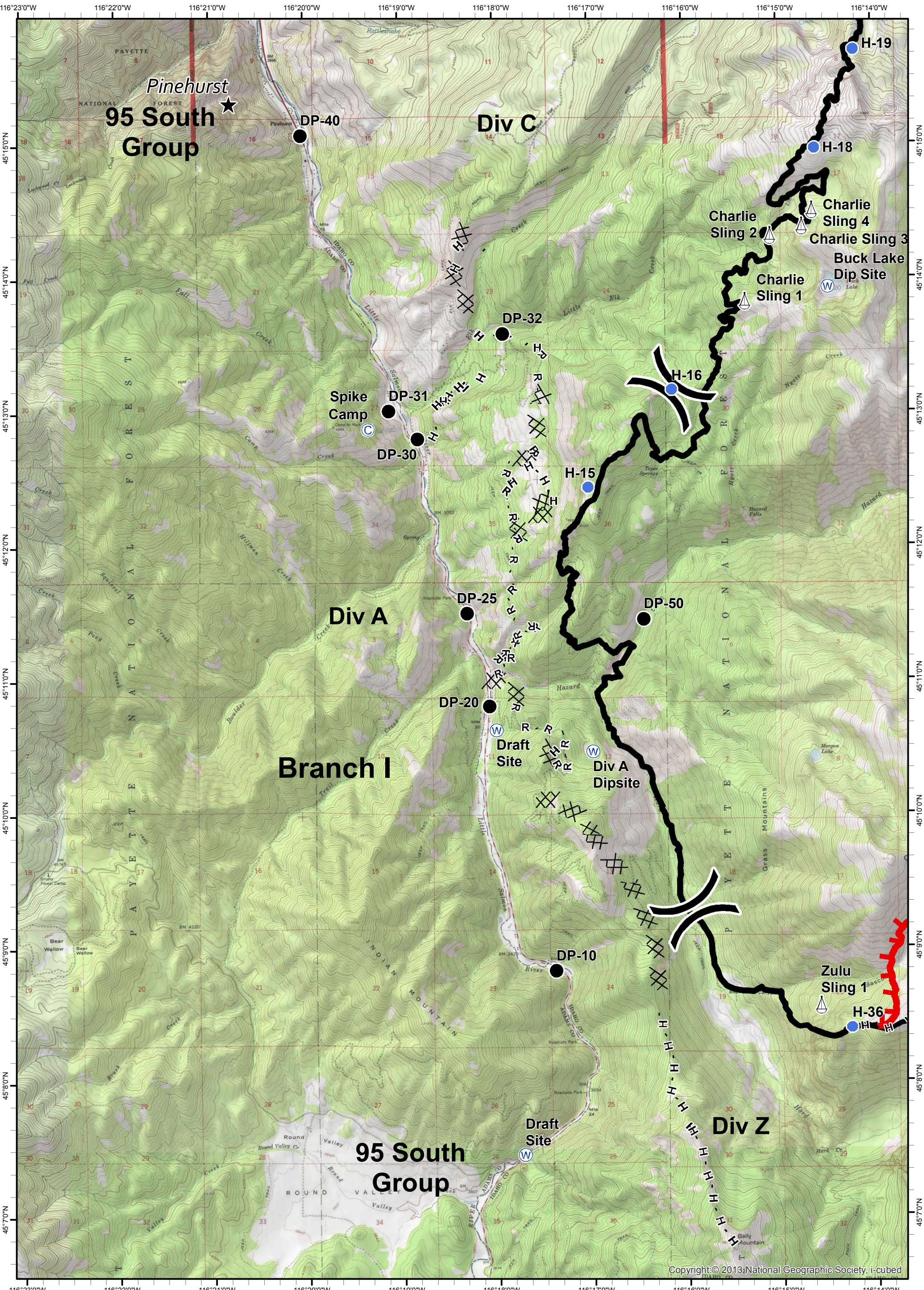
- ★ Cities/Towns
- (X) Division Breaks
- ⊙ Camp
- Drop Point
- ⚡ Lookout
- ⚓ Helispot
- ⚓ Sling Site
- ▲ Ranch
- ⊙ Water Source
- WX Mobile Weather Unit
- ⊙ Limited Access
- Uncontrolled Fire Edge
- () Ridge / Geographic Feature
- Proposed Dozer Line
- Completed Line
- Completed Dozer Line
- H - H - Hand Line
- R - R - Road as Completed Line



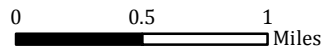
Tepee Springs Fire
 IAP 1
 ID-PAF-000192
 9/8/2015
 94,655 Acres



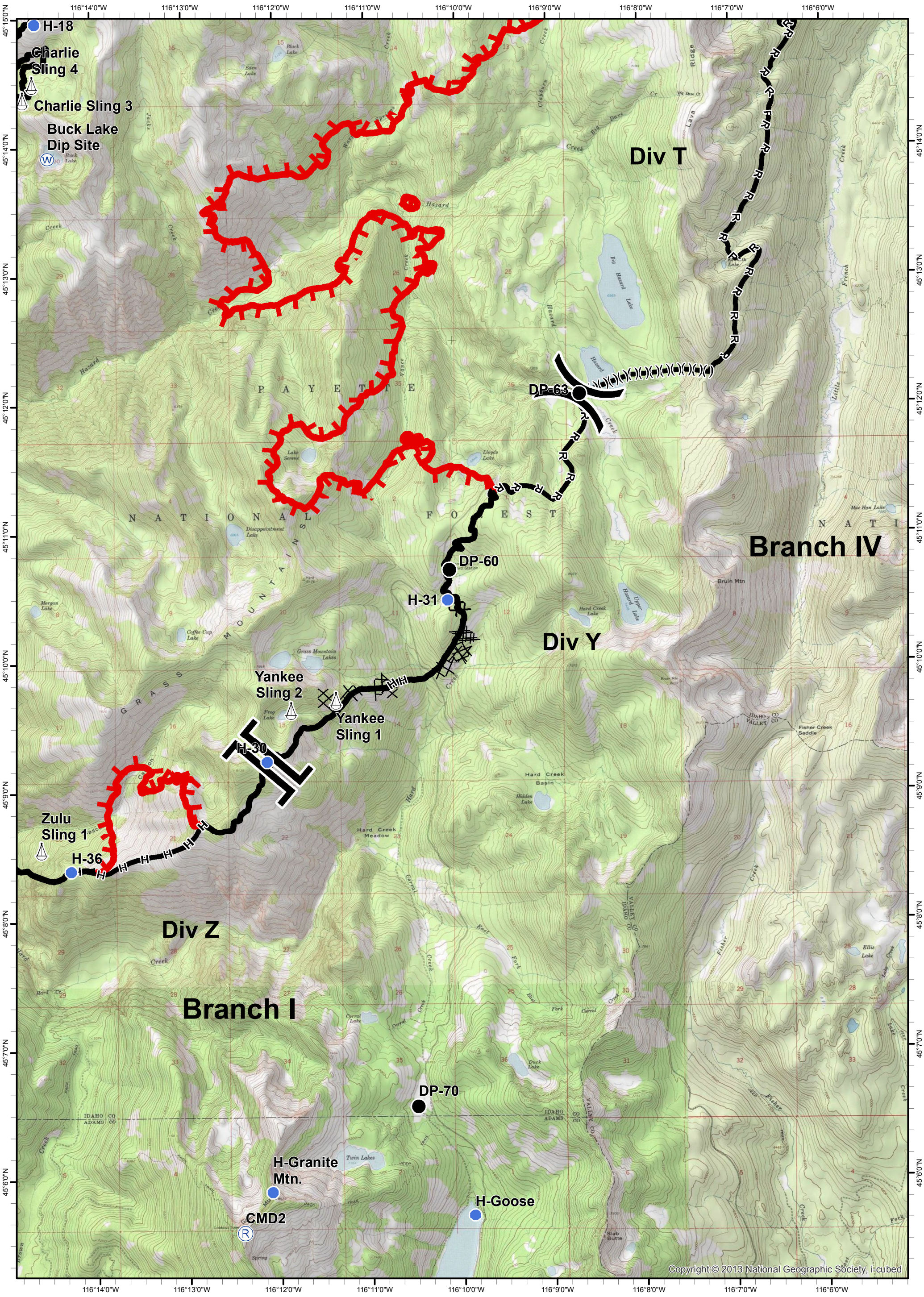
- ★ Cities/Towns
- (X) Division Breaks
- ⊙ Camp
- Drop Point
- 🚒 Lookout
- 🚁 Helispot
- 🚢 Sling Site
- ▲ Ranch
- 🌊 Water Source
- WX Mobile Weather Unit
- 🚧 Limited Access
- 🔴 Uncontrolled Fire Edge
- (X)(X)(X) Ridge / Geographic Feature
- ⊗ Proposed Dozer Line
- 🏠 Completed Line
- ⊗⊗ Completed Dozer Line
- H - H - Hand Line
- R - R - Road as Completed Line



Tepee Springs Fire
IAP 2
ID-PAF-000192
9/8/2015
94,655 Acres



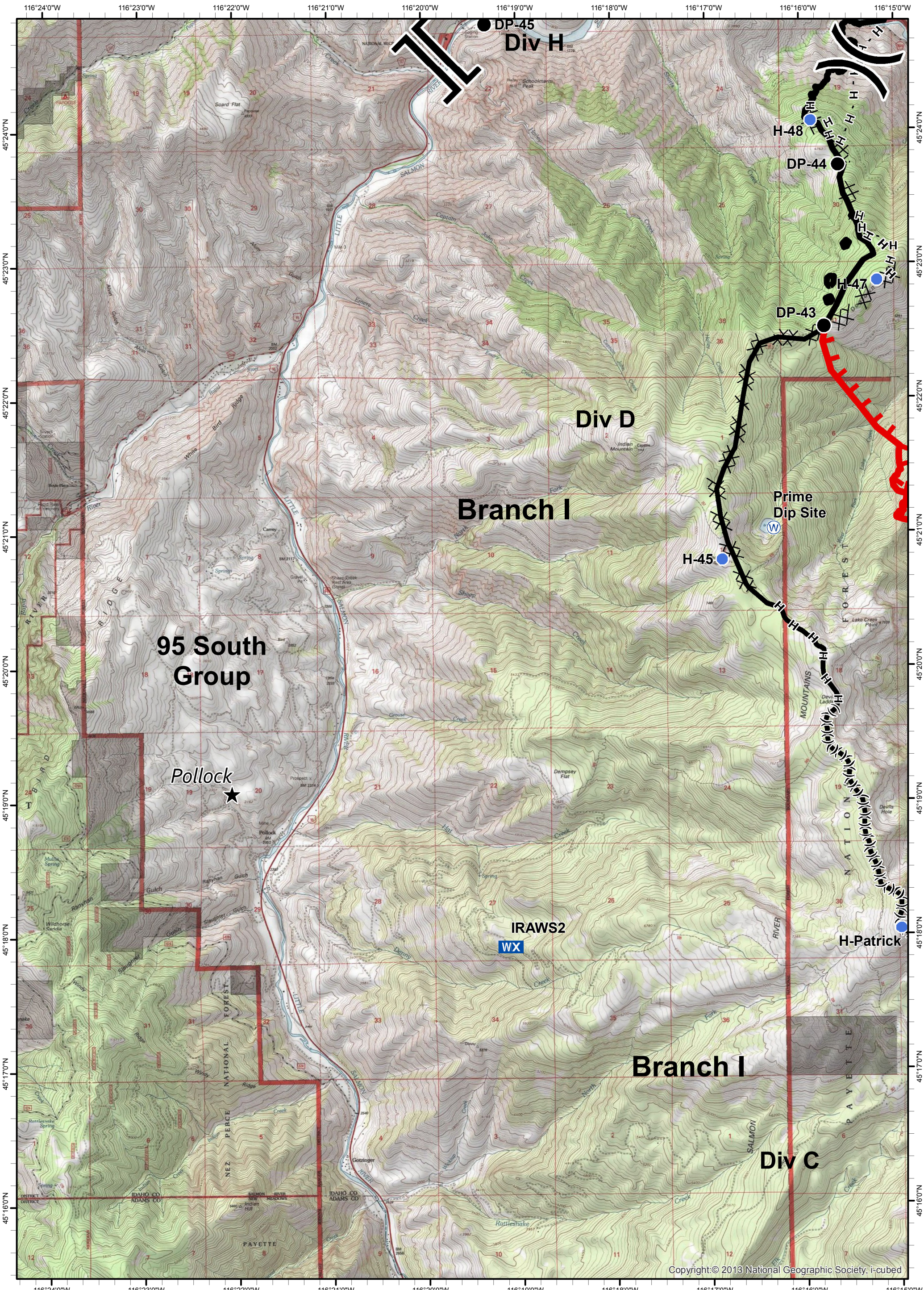
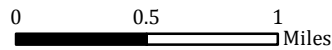
- ★ Cities/Towns
- (X) Division Breaks
- ⊙ Camp
- Drop Point
- 🚒 Lookout
- 🚁 Helispot
- 🚢 Sling Site
- ▲ Ranch
- 🌊 Water Source
- WX Mobile Weather Unit
- 🚧 Limited Access
- 🔴 Uncontrolled Fire Edge
- () Ridge / Geographic Feature
- ⊗ Proposed Dozer Line
- ⬛ Completed Line
- ⊗⊗ Completed Dozer Line
- H - H - Hand Line
- R - R - Road as Completed Line



Tepee Springs Fire
 IAP 3
 ID-PAF-000192
 9/8/2015
 94,655 Acres



- ★ Cities/Towns
- (X) Division Breaks
- ⊙ Camp
- Drop Point
- 🚒 Lookout
- 🚁 Helispot
- ⚓ Sling Site
- ▲ Ranch
- 🌊 Water Source
- WX Mobile Weather Unit
- 🚧 Limited Access
- 🔴 Uncontrolled Fire Edge
- ()() Ridge / Geographic Feature
- ⊗ Proposed Dozer Line
- 🏗️ Completed Line
- ⊗ ⊗ Completed Dozer Line
- H - H - Hand Line
- R - R - Road as Completed Line



Tepee Springs Fire
 IAP 4
 ID-PAF-000192
 9/8/2015
 94,655 Acres



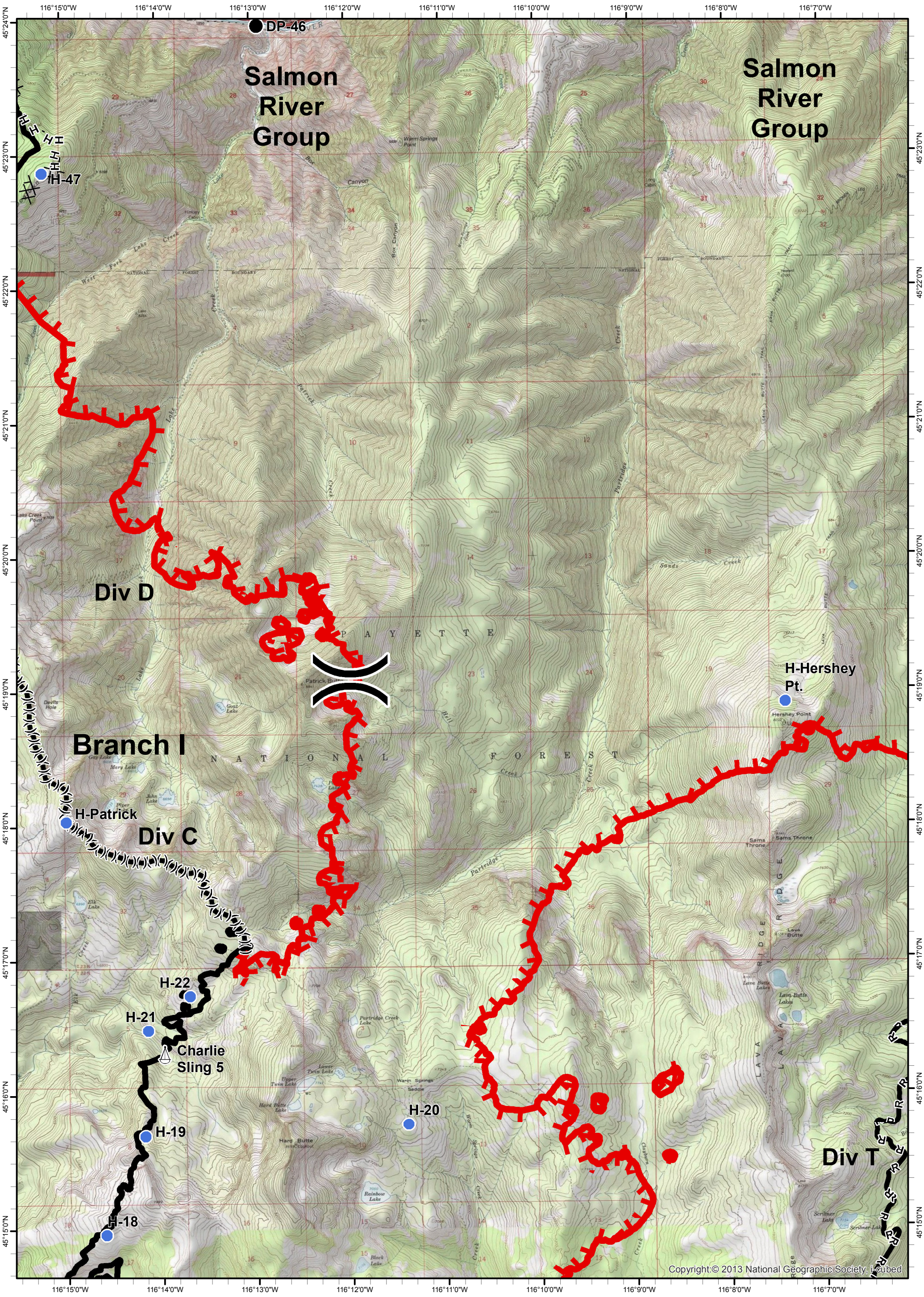
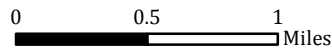
- ★ Cities/Towns
- (X) Division Breaks
- ⊙ Camp
- Drop Point

- 🚒 Lookout
- 🚁 Helispot
- 🚢 Sling Site
- 🏠 Ranch

- 🌊 Water Source
- WX Mobile Weather Unit
- 🚧 Limited Access

- 🔥 Uncontrolled Fire Edge
- (X)(X)(X) Ridge / Geographic Feature
- ⊙ Proposed Dozer Line
- Completed Line

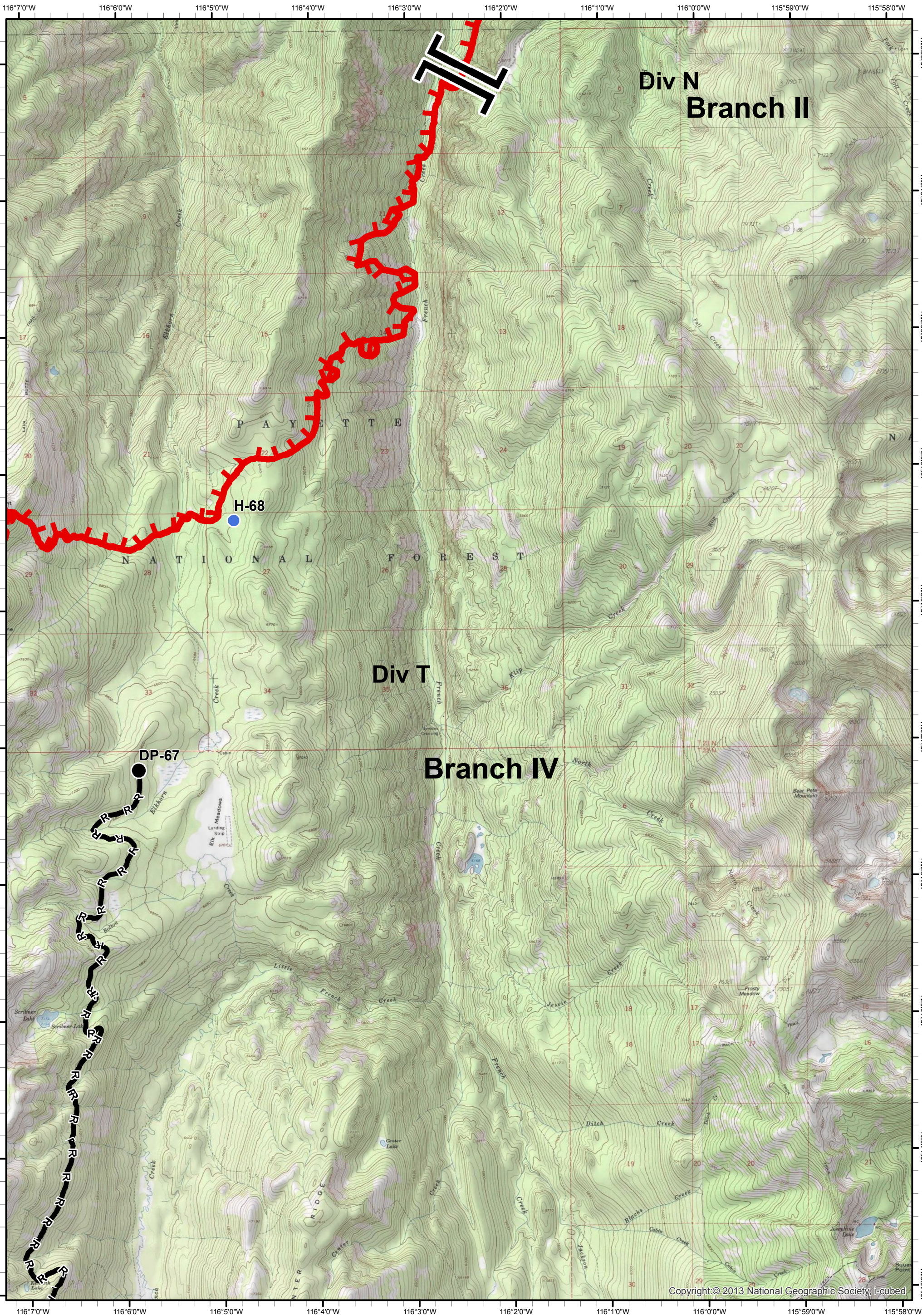
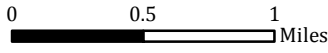
- ⊗ Completed Dozer Line
- H - H - Hand Line
- R - R - Road as Completed Line



Tepee Springs Fire
 IAP 5
 ID-PAF-000192
 9/8/2015
 94,655 Acres



- ★ Cities/Towns
- (X) Division Breaks
- ⊙ Camp
- Drop Point
- 🚒 Lookout
- 🚁 Helispot
- ⚓ Sling Site
- ▲ Ranch
- 🌊 Water Source
- WX Mobile Weather Unit
- 🚧 Limited Access
- 🔴 Uncontrolled Fire Edge
- () Ridge / Geographic Feature
- ⊙ Proposed Dozer Line
- ▬ Completed Line
- ⊗ Completed Dozer Line
- H - H - Hand Line
- R - R - Road as Completed Line



Tepee Springs Fire
IAP 6
ID-PAF-000192
9/8/2015
94,655 Acres



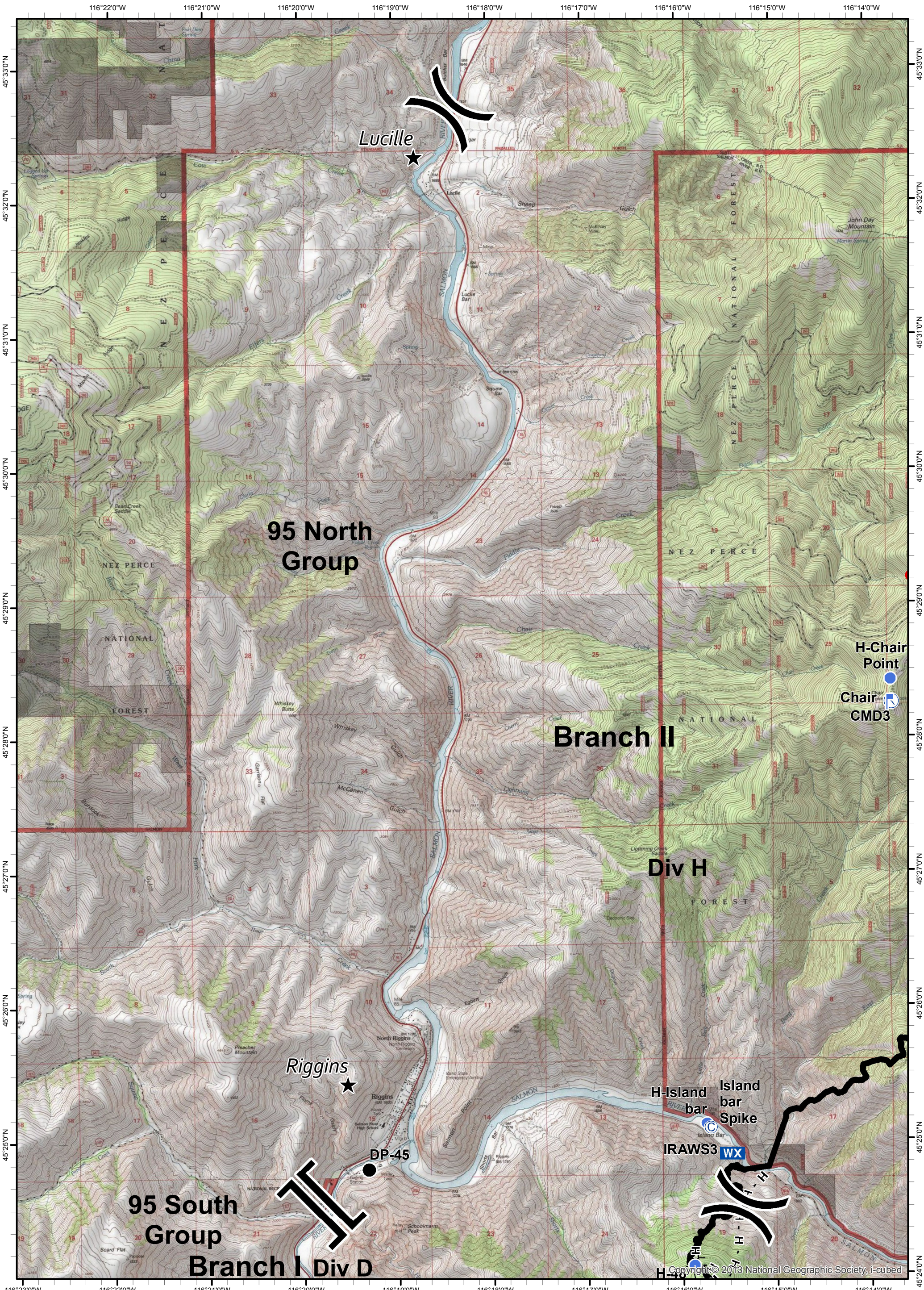
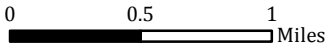
- ★ Cities/Towns
- ⌘ Division Breaks
- ⊙ Camp
- Drop Point

- 🚒 Lookout
- 🚁 Helispot
- 🚢 Sling Site
- 🏠 Ranch

- 🌊 Water Source
- 📶 Mobile Weather Unit
- 🚧 Limited Access

- 🔥 Uncontrolled Fire Edge
- () Ridge / Geographic Feature
- ⊙ Proposed Dozer Line
- Completed Line

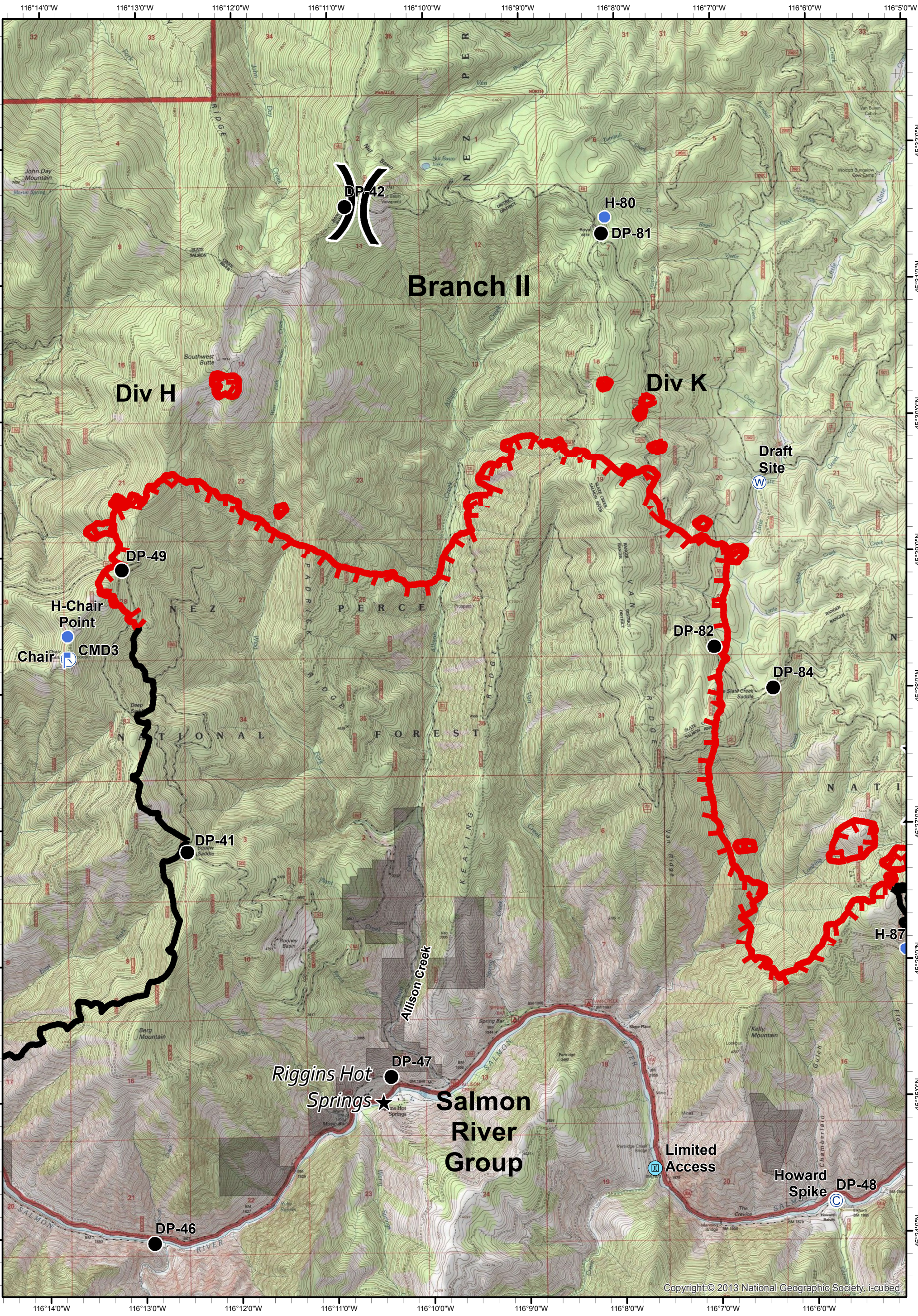
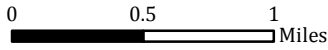
- ⊘ Completed Dozer Line
- H - H - Hand Line
- R - R - Road as Completed Line



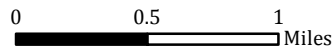
Tepee Springs Fire
IAP 7
ID-PAF-000192
9/8/2015
94,655 Acres



- ★ Cities/Towns
- (X) Division Breaks
- ⊙ Camp
- Drop Point
- 🚒 Lookout
- 🚁 Heliprot
- 🚢 Sling Site
- ▲ Ranch
- 🌊 Water Source
- WX Mobile Weather Unit
- 🚧 Limited Access
- 🔴 Uncontrolled Fire Edge
- (X)(X)(X) Ridge / Geographic Feature
- ⊗ Proposed Dozer Line
- 🔲 Completed Line
- ⊗⊗ Completed Dozer Line
- H - H - Hand Line
- R - R - Road as Completed Line



Tepee Springs Fire
 IAP 8
 ID-PAF-000192
 9/8/2015
 94,655 Acres



- ★ Cities/Towns
- (X) Division Breaks
- ⊙ Camp
- Drop Point
- ⬜ Lookout
- Helispot
- ⚓ Sling Site
- ▲ Ranch
- ⊙ Water Source
- WX Mobile Weather Unit
- ⊙ Limited Access
- Uncontrolled Fire Edge
- () () () Ridge / Geographic Feature
- ⊙ Proposed Dozer Line
- Completed Line
- Completed Dozer Line
- H - H - Hand Line
- R - R - Road as Completed Line

