

Tepee Springs Fire IAP Overview Map

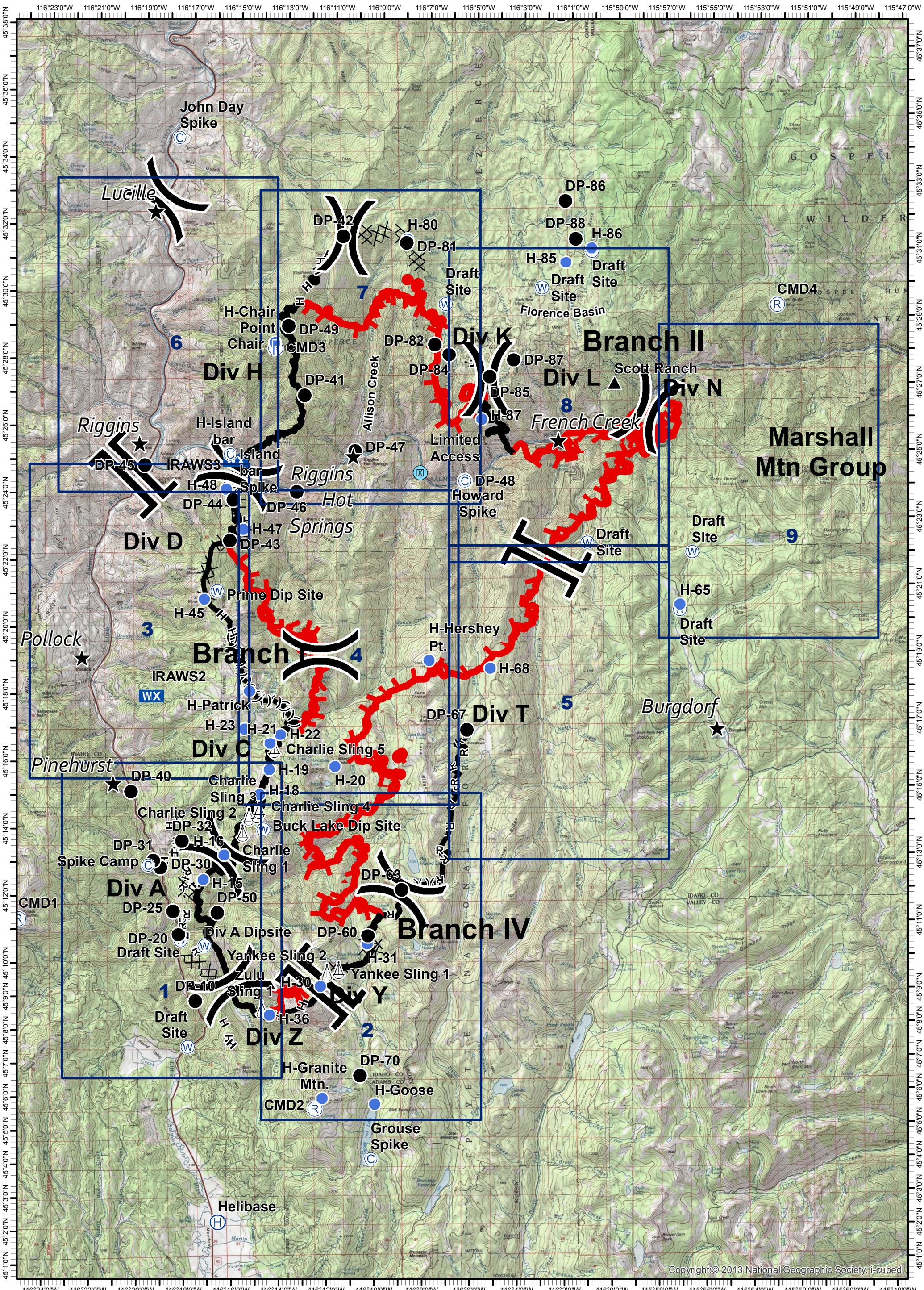
ID-PAF-000192
9/9/2015
94,703 Acres



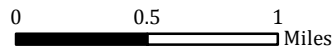
0 0.5 1
Miles



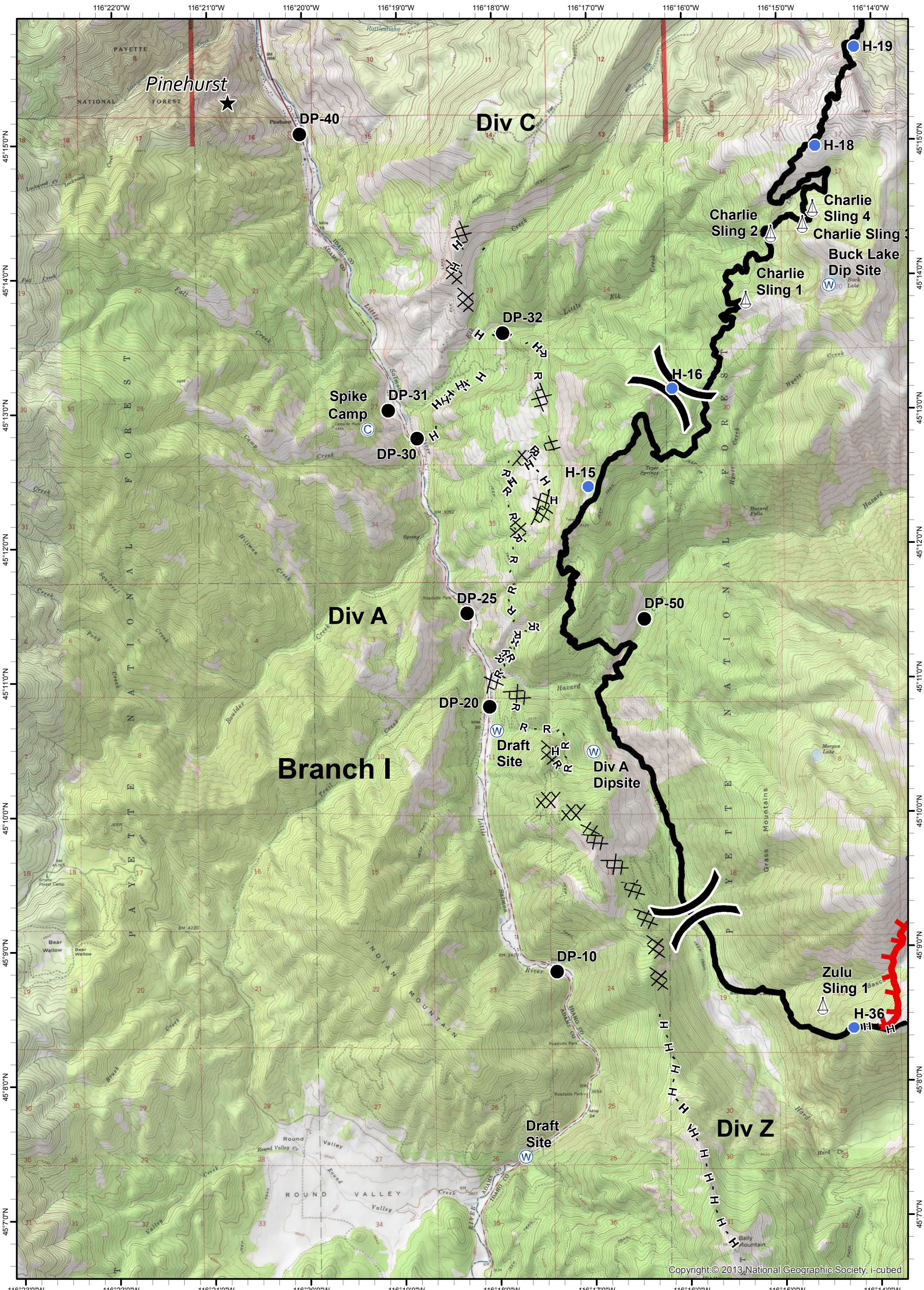
- ★ Cities/Towns
- ⌘ Division Breaks
- ⊙ Camp
- Drop Point
- ⚡ Lookout
- ⚓ Helispot
- ⚓ Sling Site
- ▲ Ranch
- Ⓜ Water Source
- Ⓜ WX Mobile Weather Unit
- Ⓜ Limited Access
- ▬ Uncontrolled Fire Edge
- ()() Ridge / Geographic Feature
- ⊗ Proposed Dozer Line
- ▬ Completed Line
- ⊗⊗⊗ Completed Dozer Line
- H - H - Hand Line
- R - R - Road as Completed Line



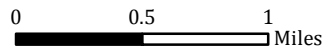
Tepee Springs Fire
 IAP 1
 ID-PAF-000192
 9/9/2015
 94,703 Acres



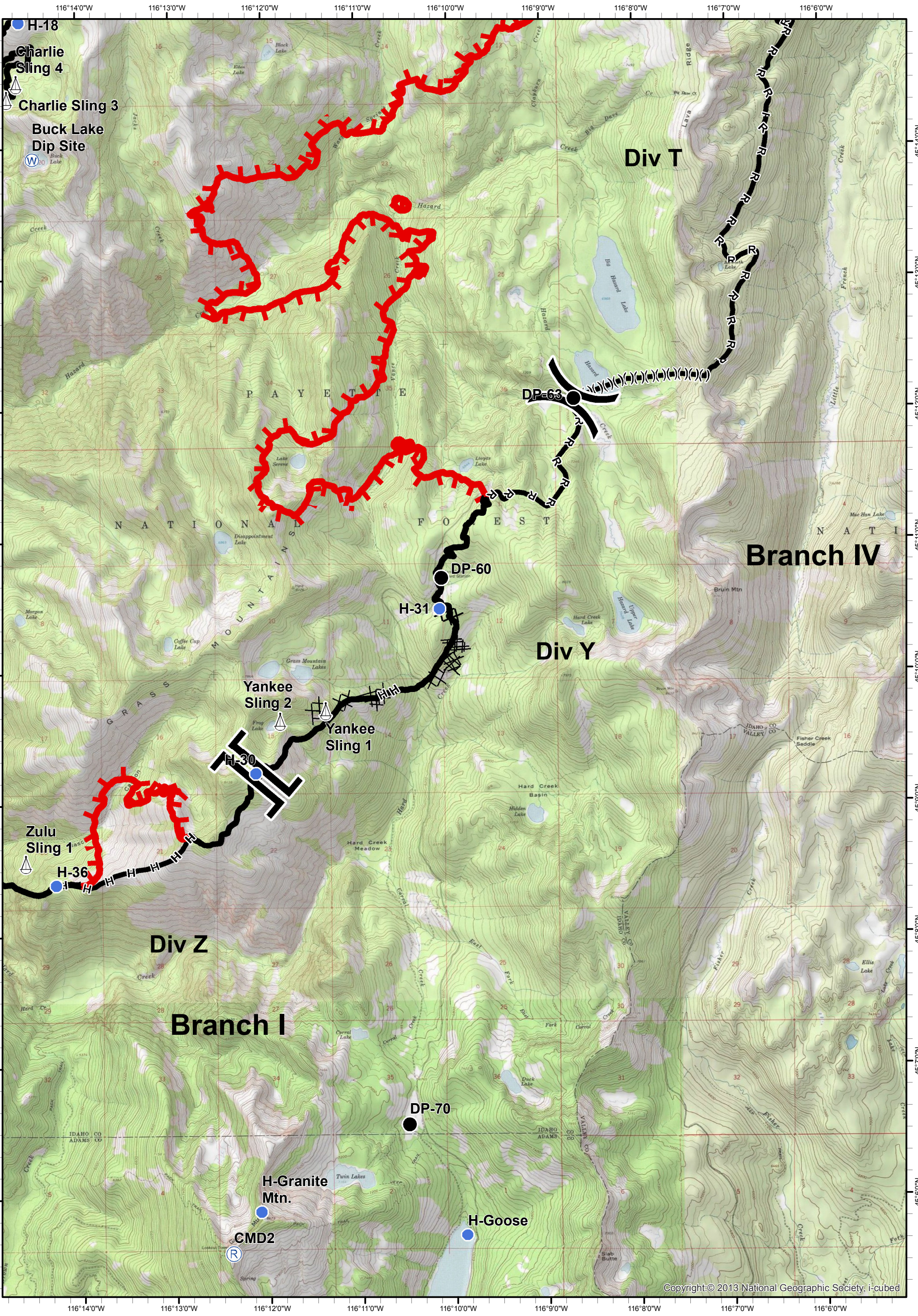
- ★ Cities/Towns
- (X) Division Breaks
- ⊙ Camp
- Drop Point
- 🚒 Lookout
- 🚁 Helispot
- 🚢 Sling Site
- 🏠 Ranch
- 🌊 Water Source
- 📶 Mobile Weather Unit
- 🚧 Limited Access
- 🔴 Uncontrolled Fire Edge
- (X)(X)(X) Ridge / Geographic Feature
- ⊙ Proposed Dozer Line
- 🔴 Completed Line
- ⊗ Completed Dozer Line
- H - H - Hand Line
- R - R - Road as Completed Line



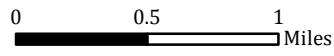
Tepee Springs Fire
IAP 2
ID-PAF-000192
9/9/2015
94,703 Acres



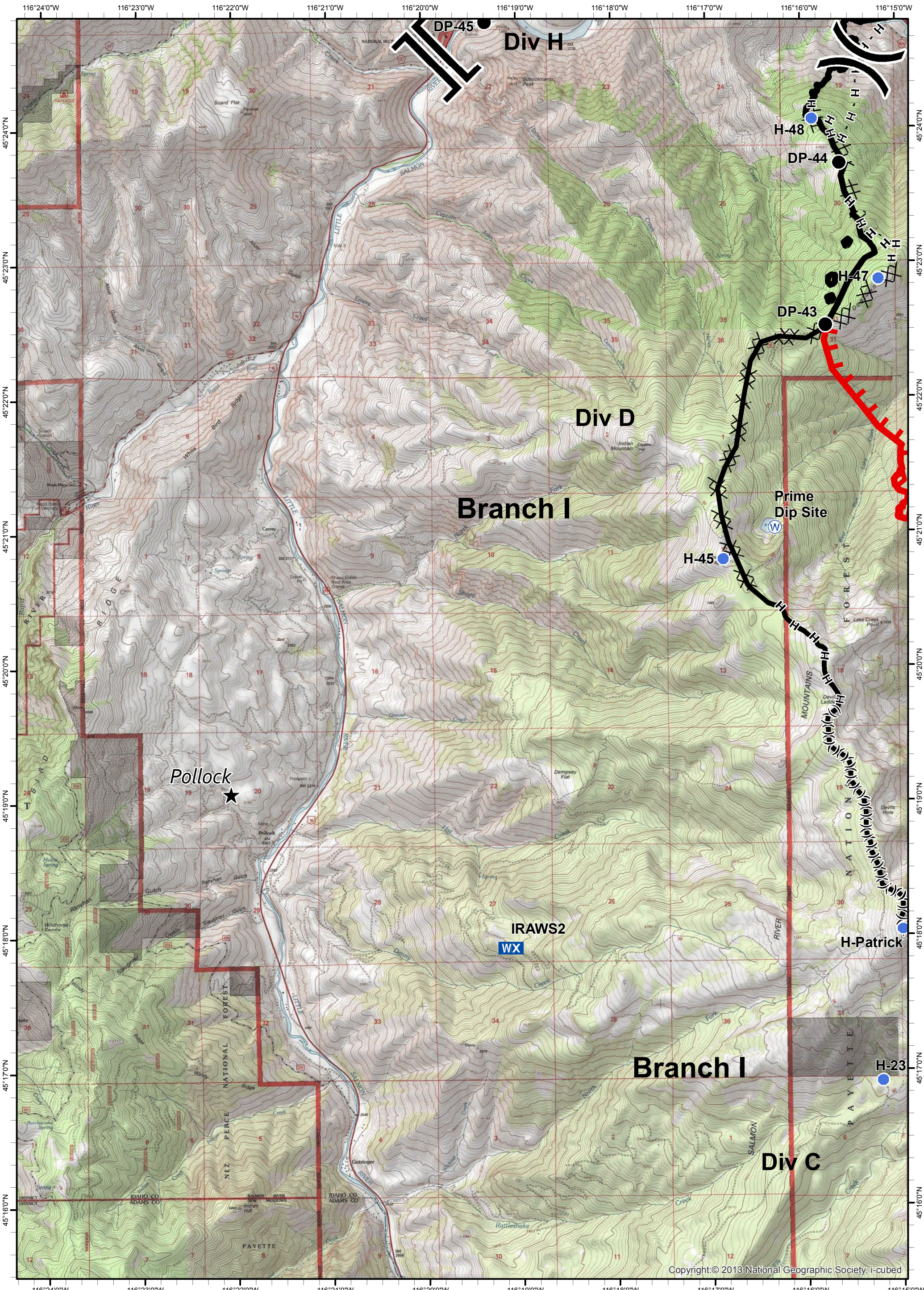
- ★ Cities/Towns
- (X) Division Breaks
- ⊙ Camp
- Drop Point
- 🚒 Lookout
- 🚁 Helispot
- 🚢 Sling Site
- 🏠 Ranch
- 🌊 Water Source
- WX Mobile Weather Unit
- 🚧 Limited Access
- 🔥 Uncontrolled Fire Edge
- (X)(X)(X) Ridge / Geographic Feature
- ⊙ Proposed Dozer Line
- 🛣️ Completed Line
- ⊗ Completed Dozer Line
- H - H - Hand Line
- R - R - Road as Completed Line



Tepee Springs Fire
 IAP 3
 ID-PAF-000192
 9/9/2015
 94,703 Acres



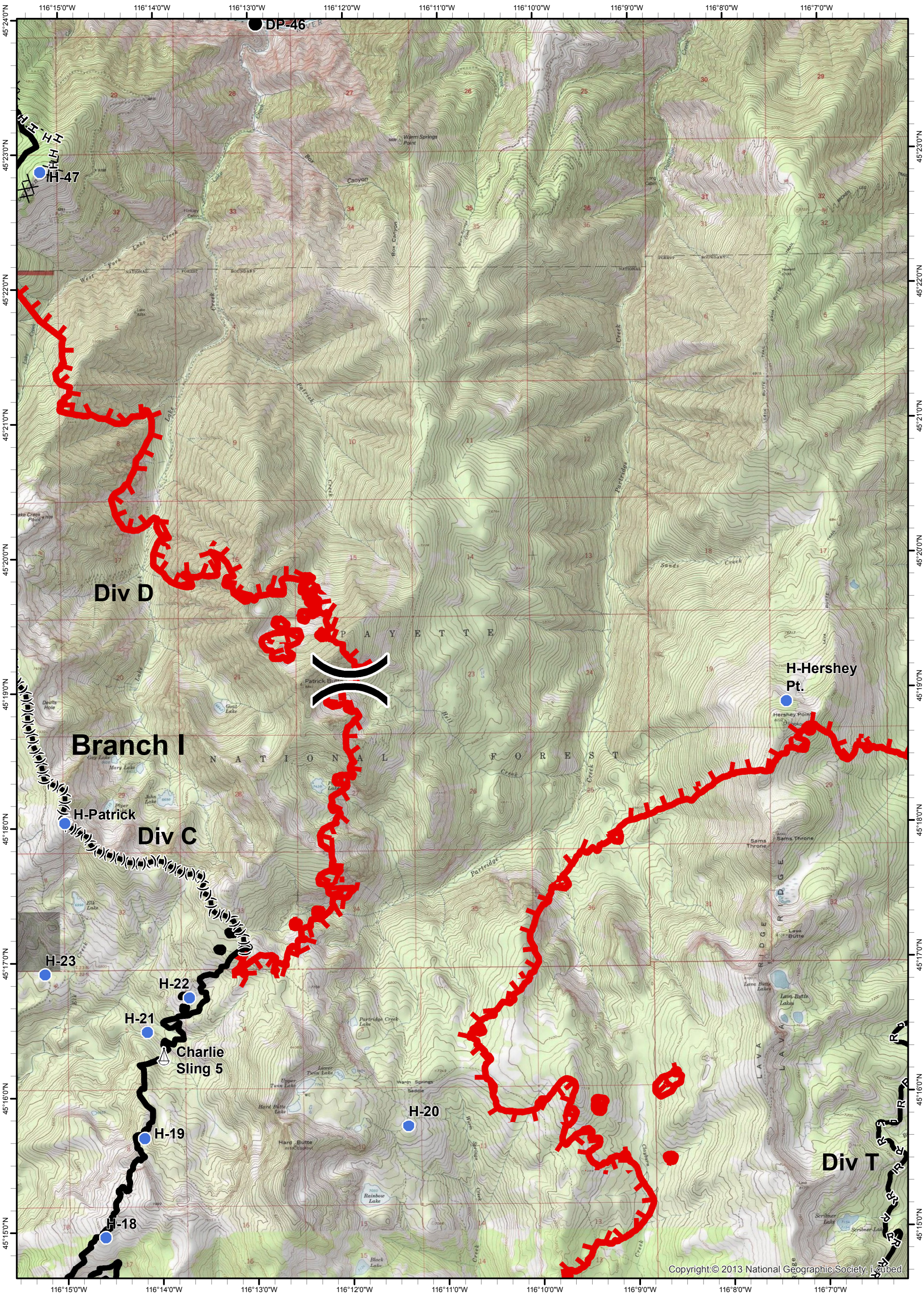
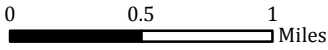
- ★ Cities/Towns
- (X) Division Breaks
- ⊙ Camp
- Drop Point
- 📏 Lookout
- 📍 Helispot
- 🚢 Sling Site
- 🏠 Ranch
- 🌊 Water Source
- 📶 Mobile Weather Unit
- 🚧 Limited Access
- 🔴 Uncontrolled Fire Edge
- () Ridge / Geographic Feature
- ⊙ Proposed Dozer Line
- Completed Line
- ⊗ Completed Dozer Line
- H - H - Hand Line
- R - R - Road as Completed Line



Tepee Springs Fire
IAP 4
ID-PAF-000192
9/9/2015
94,703 Acres



- ★ Cities/Towns
- (X) Division Breaks
- ⊙ Camp
- Drop Point
- 🚒 Lookout
- 🚁 Helispot
- 🚢 Sling Site
- 🏠 Ranch
- 🌊 Water Source
- 📶 Mobile Weather Unit
- 🚧 Limited Access
- 🔴 Uncontrolled Fire Edge
- (X)(X)(X) Ridge / Geographic Feature
- ⊙ Proposed Dozer Line
- 🔴 Completed Line
- ⊗ Completed Dozer Line
- H - H - Hand Line
- R - R - Road as Completed Line



Tepee Springs Fire
 IAP 5
 ID-PAF-000192
 9/9/2015
 94,703 Acres



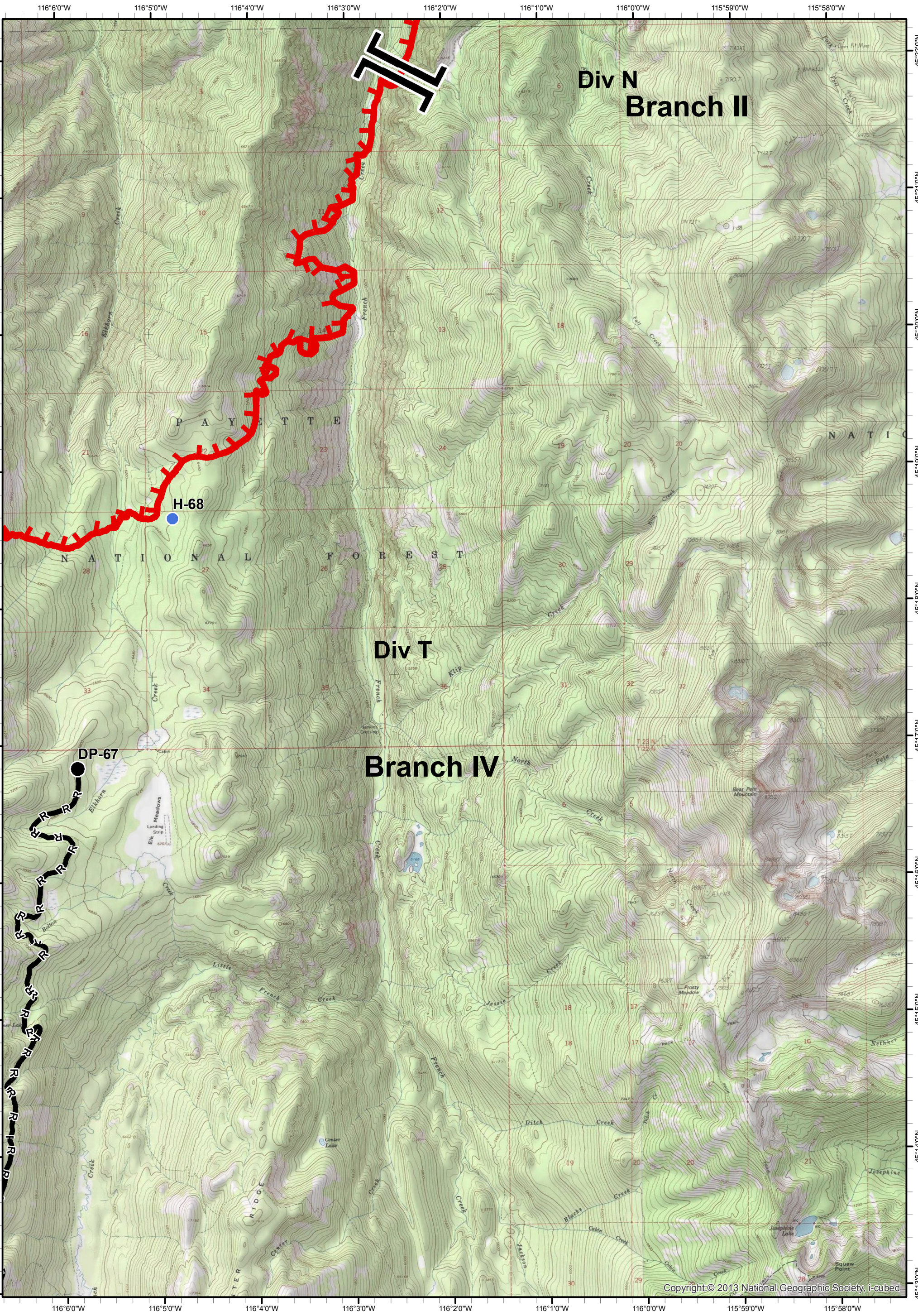
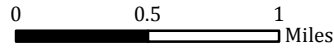
- ★ Cities/Towns
- (X) Division Breaks
- ⊙ Camp
- Drop Point

- 🚒 Lookout
- 🚁 Helispot
- 🚢 Sling Site
- 🏠 Ranch

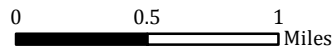
- 🌊 Water Source
- 📶 Mobile Weather Unit
- 🚧 Limited Access

- 🔥 Uncontrolled Fire Edge
- (X)(X)(X) Ridge / Geographic Feature
- ⊙ Proposed Dozer Line
- Completed Line

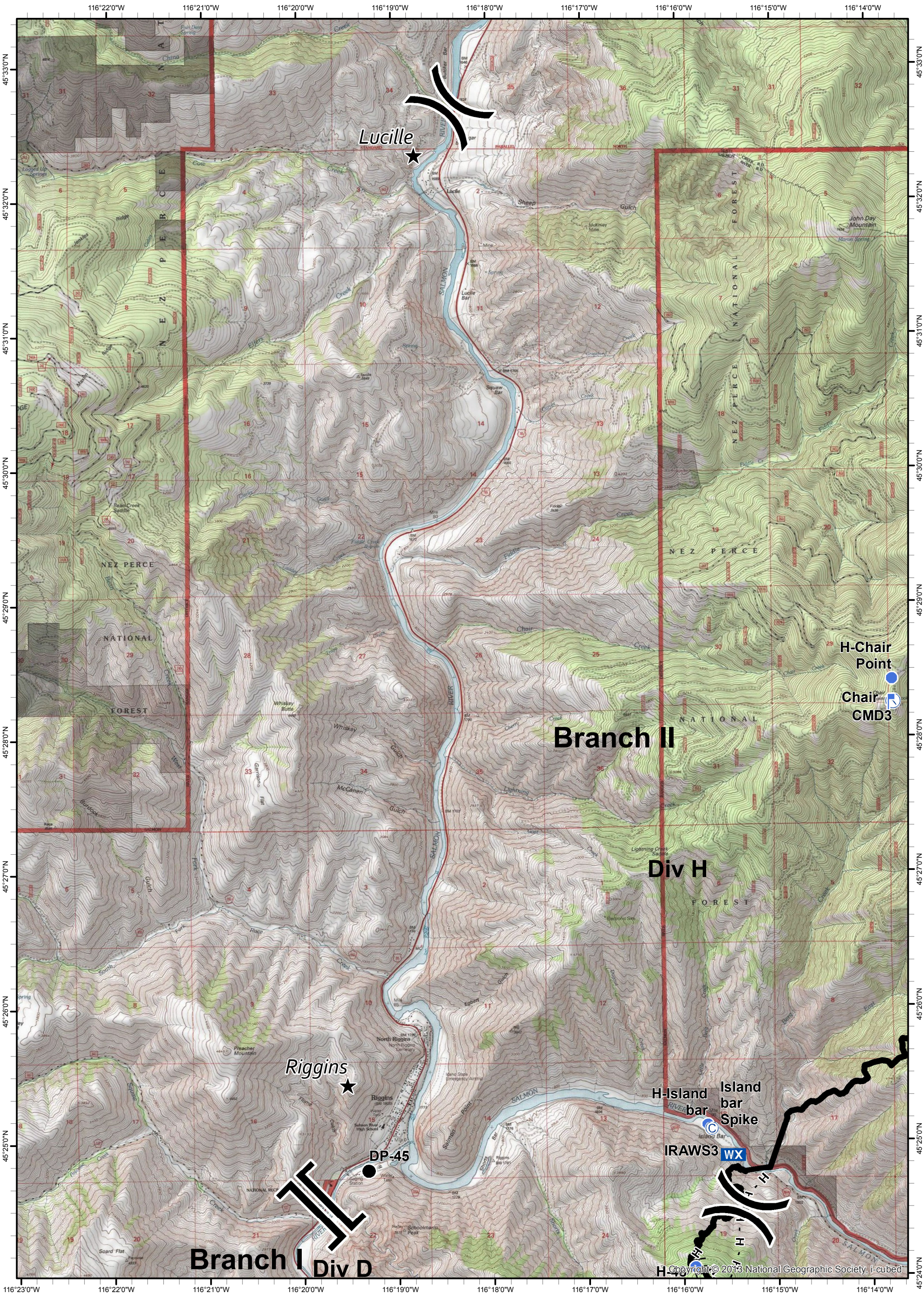
- ⊗ Completed Dozer Line
- H - H - Hand Line
- R - R - Road as Completed Line



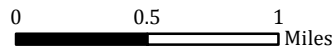
Tepee Springs Fire
IAP 6
ID-PAF-000192
9/9/2015
94,703 Acres



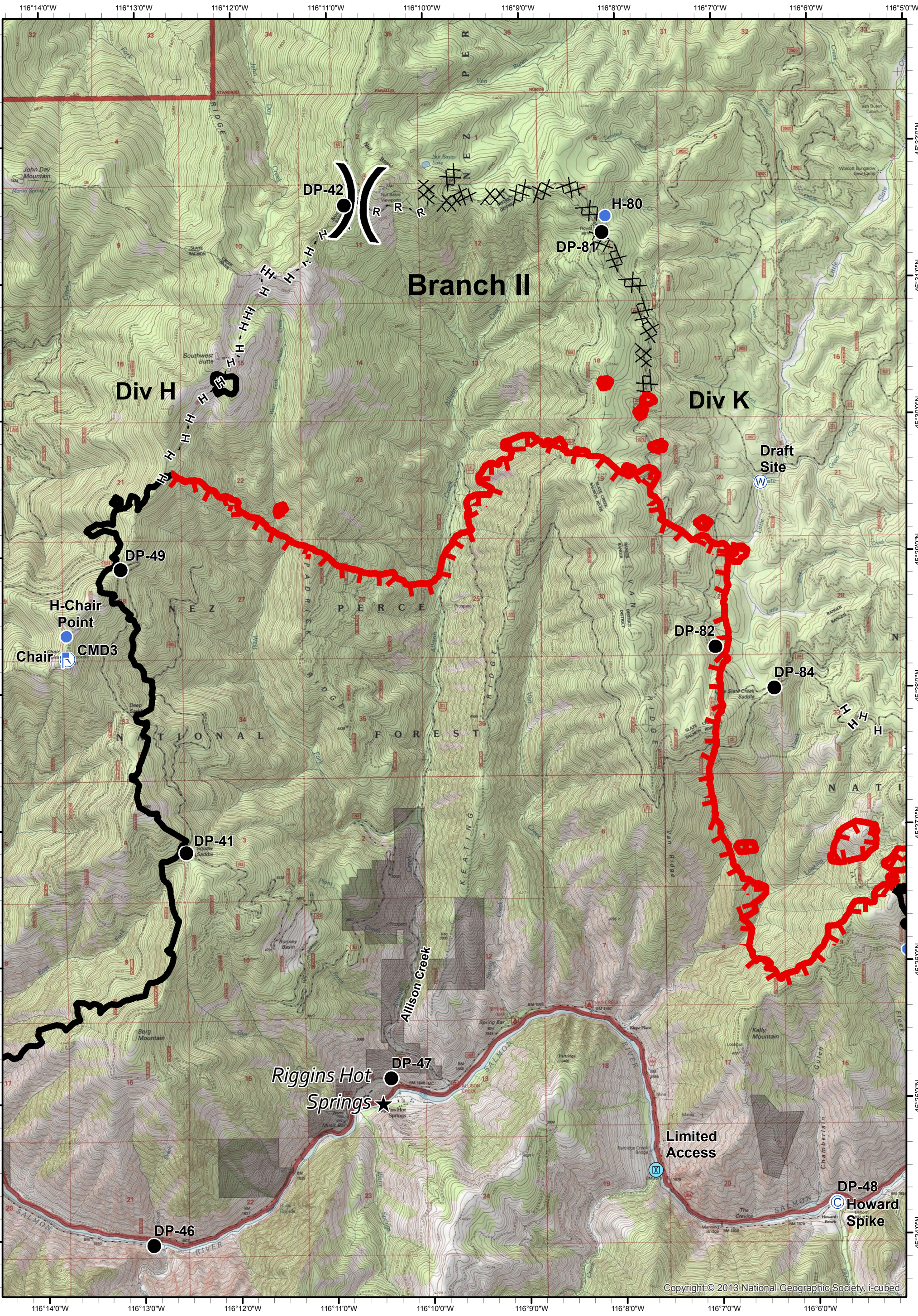
- ★ Cities/Towns
- (X) Division Breaks
- ⊙ Camp
- Drop Point
- 🚒 Lookout
- 🚁 Helispot
- 🚢 Sling Site
- ▲ Ranch
- 🌊 Water Source
- WX Mobile Weather Unit
- 🚧 Limited Access
- 🔴 Uncontrolled Fire Edge
- (X)(X)(X) Ridge / Geographic Feature
- ⊙ Proposed Dozer Line
- ▬ Completed Line
- ⊗ Completed Dozer Line
- H - H - Hand Line
- R - R - Road as Completed Line



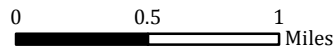
Tepee Springs Fire
IAP 7
ID-PAF-000192
9/9/2015
94,703 Acres



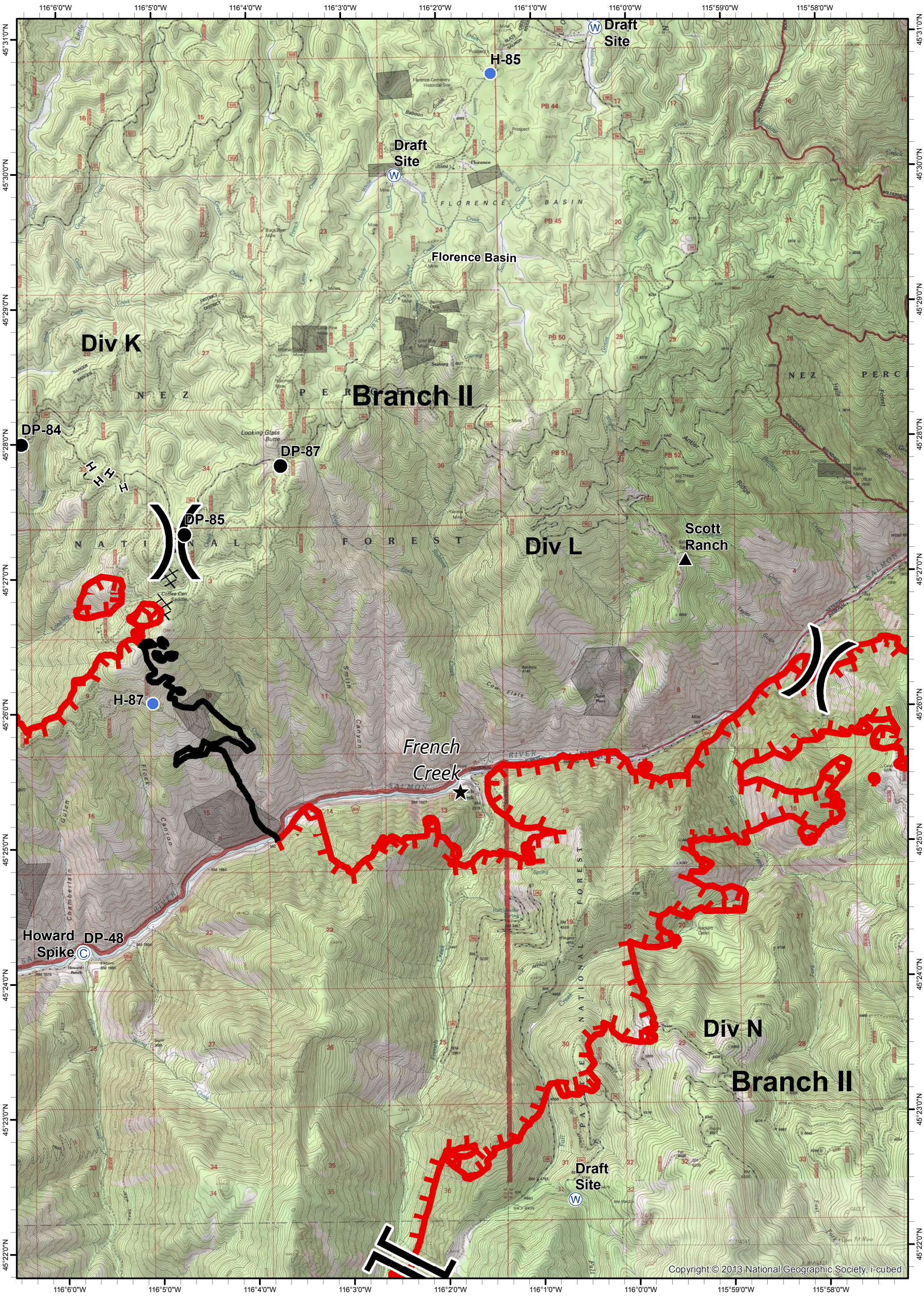
- ★ Cities/Towns
- (X) Division Breaks
- ⊙ Camp
- Drop Point
- 🚒 Lookout
- 🚁 Heliprot
- 🚢 Sling Site
- ▲ Ranch
- 🌊 Water Source
- 📶 Mobile Weather Unit
- 🚧 Limited Access
- 🔥 Uncontrolled Fire Edge
- (X)(X)(X) Ridge / Geographic Feature
- ⊙ Proposed Dozer Line
- 🚧 Completed Line
- ⊗ Completed Dozer Line
- H - H - Hand Line
- R - R - Road as Completed Line



Tepee Springs Fire
 IAP 8
 ID-PAF-000192
 9/9/2015
 94,703 Acres



- ★ Cities/Towns
- (X) Division Breaks
- ⊙ Camp
- Drop Point
- 🚒 Lookout
- 🚁 Helispot
- 🚢 Sling Site
- ▲ Ranch
- 🌊 Water Source
- WX Mobile Weather Unit
- 🚧 Limited Access
- 🔥 Uncontrolled Fire Edge
- (X)(X)(X) Ridge / Geographic Feature
- ⊙ Proposed Dozer Line
- Completed Line
- ⊗ Completed Dozer Line
- H - H - Hand Line
- R - R - Road as Completed Line



Tepee Springs Fire
 IAP 9
 ID-PAF-000192
 9/9/2015
 94,703 Acres



- ★ Cities/Towns
- (X) Division Breaks
- ⊙ Camp
- Drop Point

- 📏 Lookout
- 🚁 Helispot
- 🚢 Sling Site
- 🏠 Ranch

- 🌊 Water Source
- 📶 Mobile Weather Unit
- 🚫 Limited Access

- 🔥 Uncontrolled Fire Edge
- (X)(X)(X) Ridge / Geographic Feature
- ⊙ Proposed Dozer Line
- ▬ Completed Line

- ⊗ Completed Dozer Line
- H - H - Hand Line
- R - R - Road as Completed Line

