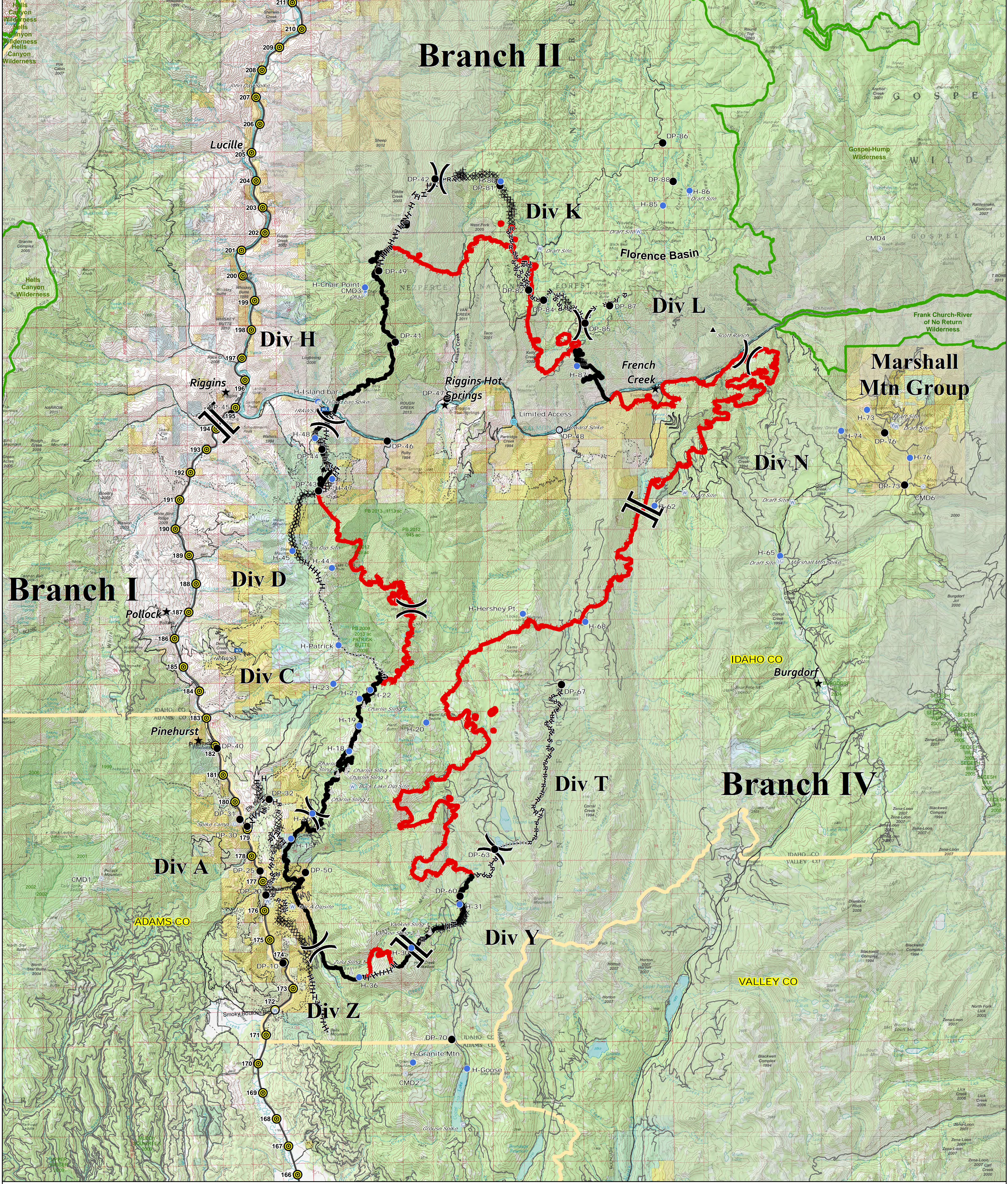


# Branch II



**Briefing Area**  
 Tepee Springs  
 94,903 Acres  
 ID-PAF-000192  
 9/11/2015  
 As of 9/10/2015 at 2300



I	Branch Break	⚡	Lookout	—	Uncontrolled Fire Edge	H-H-H	Hand Line	★	Cities/Towns
)	Division Break	⚙	Sling Site	—	Completed Line	R-R-R	Road as Completed Line	⊙	MilePosts/Signs
⊙	Camp	⚙	Repeater	(XXXXXX)	Ridge / Geographic Feature	⚡	Proposed Dozer Line	⬜	County
●	Drop Point	⚙	Mobile Weather Unit	XXXXXX	Completed Dozer Line			⬜	Wilderness Boundary
⊙	Helibase	▲	Ranch					⬜	Fire Hist 1999-2013 (+1994)
⊙	Helispot	⬜	Limited Access						
⊙	Water Source								

