

# Tepee Springs Fire IAP Overview Map

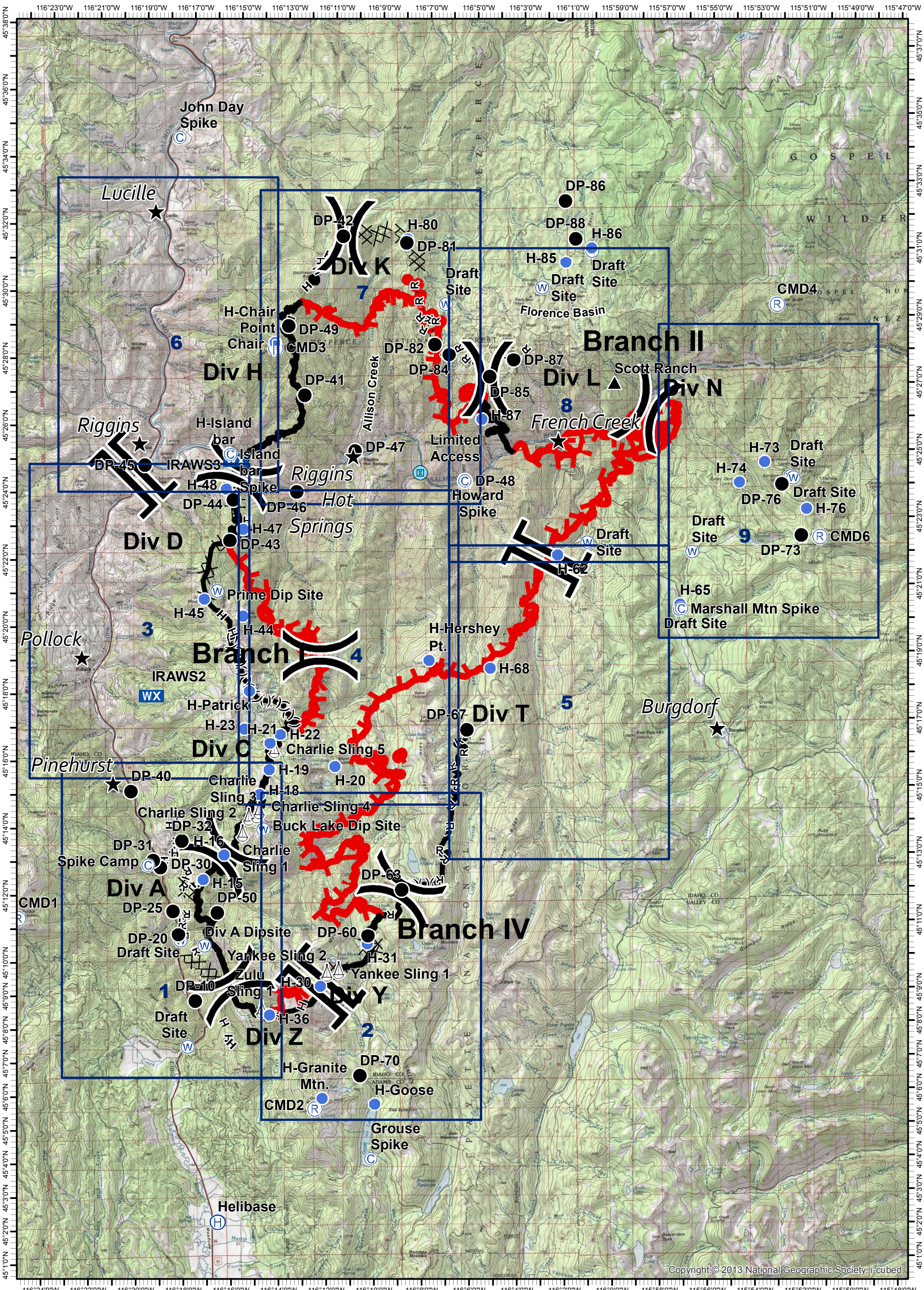
ID-PAF-000192  
9/11/2015  
94,903 Acres



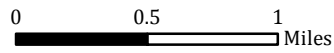
0 0.5 1  
Miles



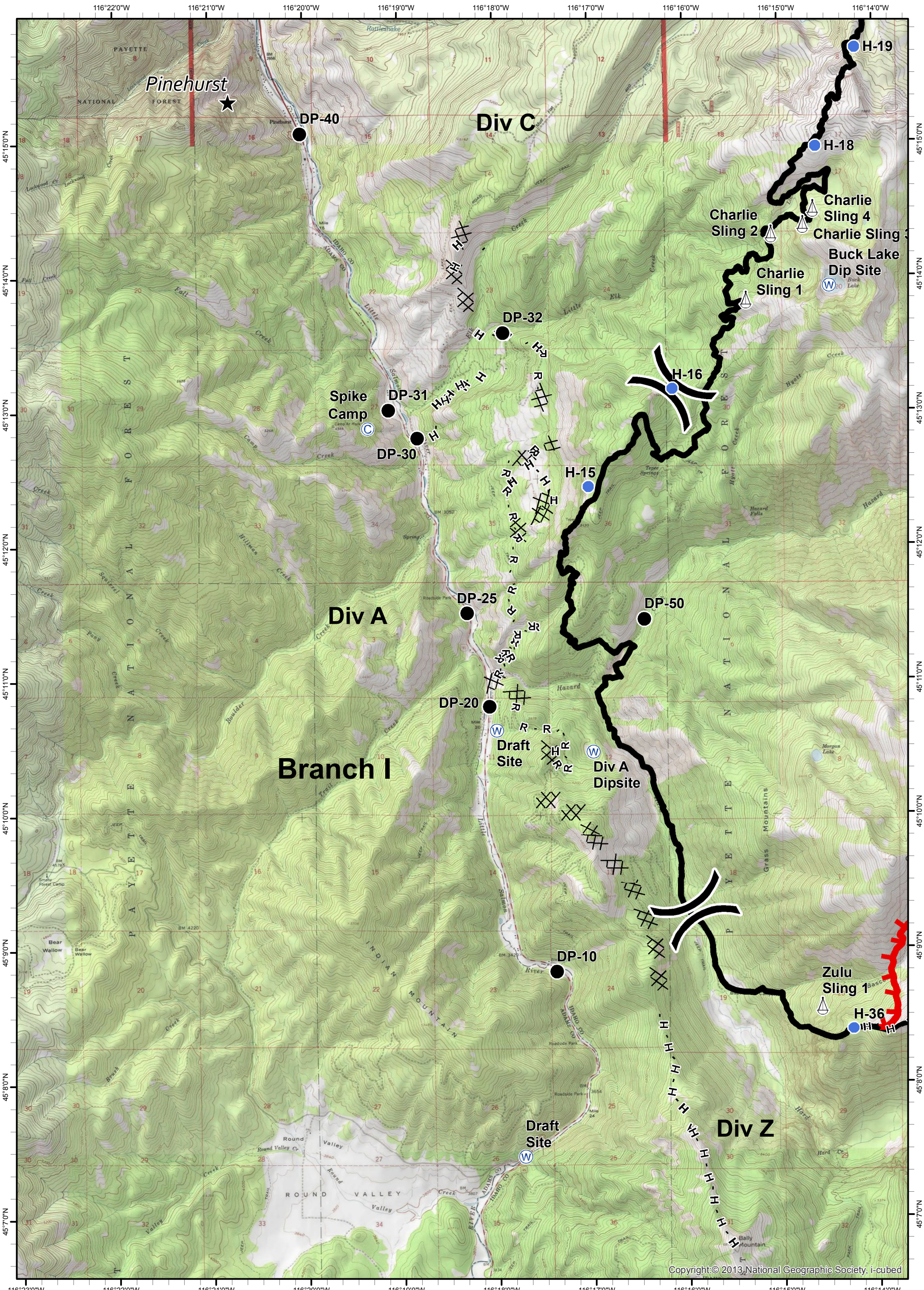
- ★ Cities/Towns
- (X) Division Breaks
- Camp
- Drop Point
- ⚡ Lookout
- Heliprot
- ⚓ Sling Site
- ▲ Ranch
- ⊙ Water Source
- WX Mobile Weather Unit
- Ⓜ Limited Access
- ▬ Uncontrolled Fire Edge
- (X)(X)(X) Ridge / Geographic Feature
- ⊗ Proposed Dozer Line
- ▬ Completed Line
- ⊗ Completed Dozer Line
- H - H - Hand Line
- R - R - Road as Completed Line



Tepee Springs Fire  
 IAP 1  
 ID-PAF-000192  
 9/11/2015  
 94,903 Acres



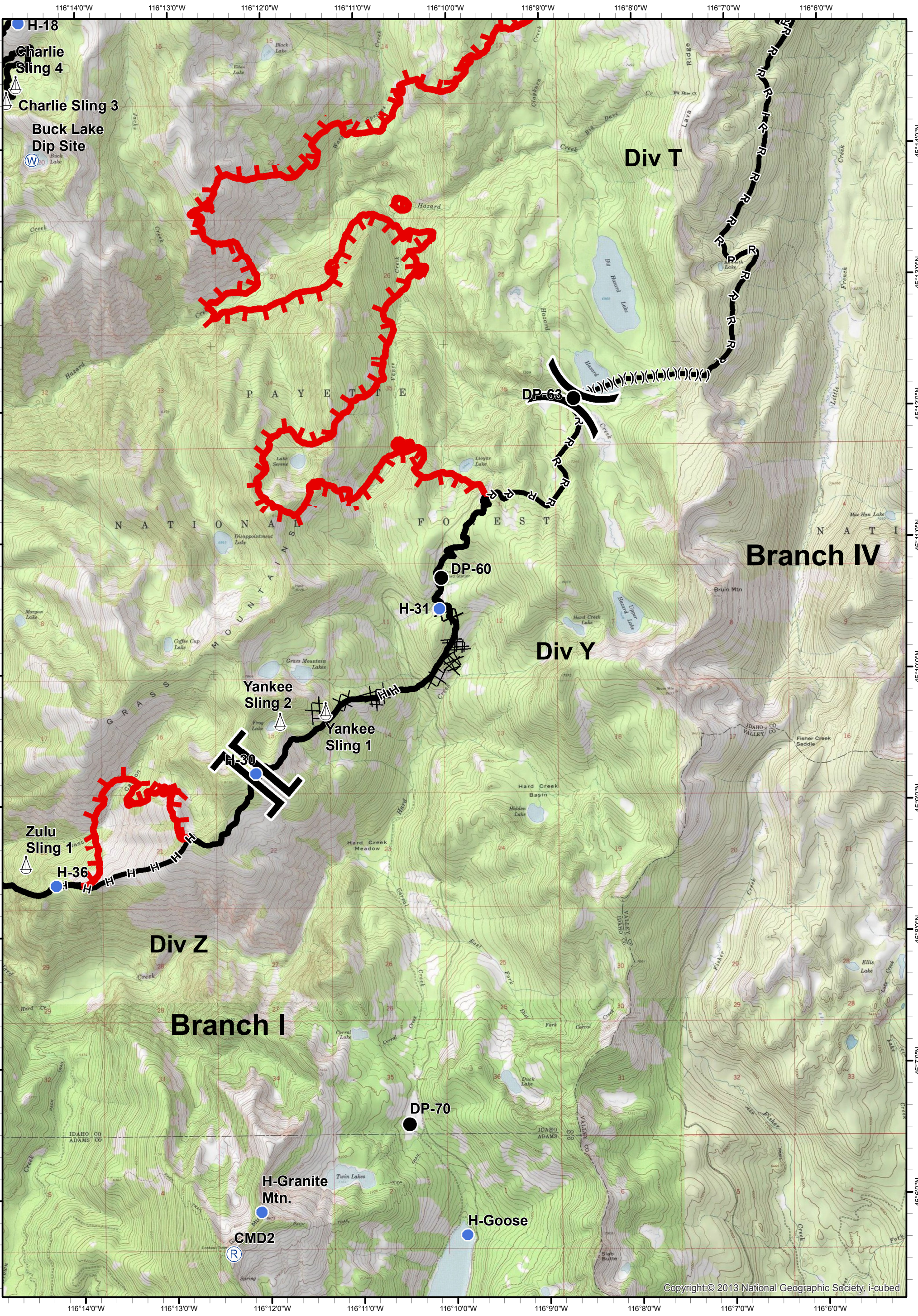
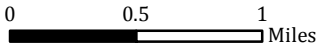
- ★ Cities/Towns
- (X) Division Breaks
- ⊙ Camp
- Drop Point
- 🚒 Lookout
- 🚁 Helispot
- 🚢 Sling Site
- 🏠 Ranch
- 🌊 Water Source
- 📶 Mobile Weather Unit
- 🚧 Limited Access
- 🔥 Uncontrolled Fire Edge
- (X)(X)(X) Ridge / Geographic Feature
- ⊙ Proposed Dozer Line
- Completed Line
- ⊗ Completed Dozer Line
- H - H - Hand Line
- R - R - Road as Completed Line



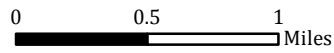
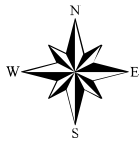
**Tepee Springs Fire**  
**IAP 2**  
**ID-PAF-000192**  
**9/11/2015**  
**94,903 Acres**



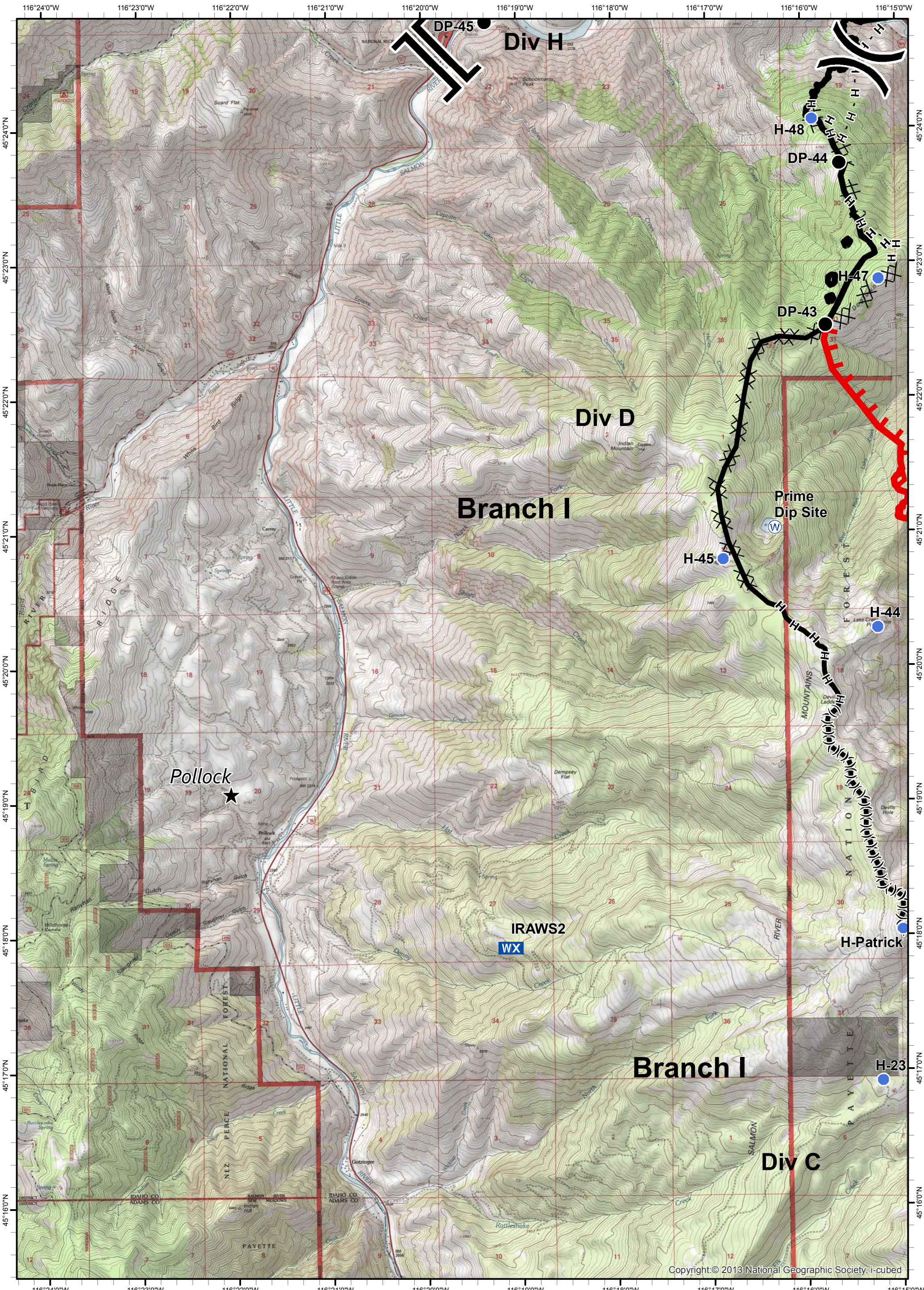
- ★ Cities/Towns
- ( ) Division Breaks
- ⊙ Camp
- Drop Point
- 🚒 Lookout
- 🚁 Helispot
- 🚢 Sling Site
- ▲ Ranch
- 🌊 Water Source
- WX Mobile Weather Unit
- 🚧 Limited Access
- 🔥 Uncontrolled Fire Edge
- (X)(X)(X) Ridge / Geographic Feature
- ⊗ Proposed Dozer Line
- ⊘ Completed Dozer Line
- H - H - Hand Line
- R - R - Road as Completed Line



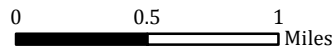
Tepee Springs Fire  
 IAP 3  
 ID-PAF-000192  
 9/11/2015  
 94,903 Acres



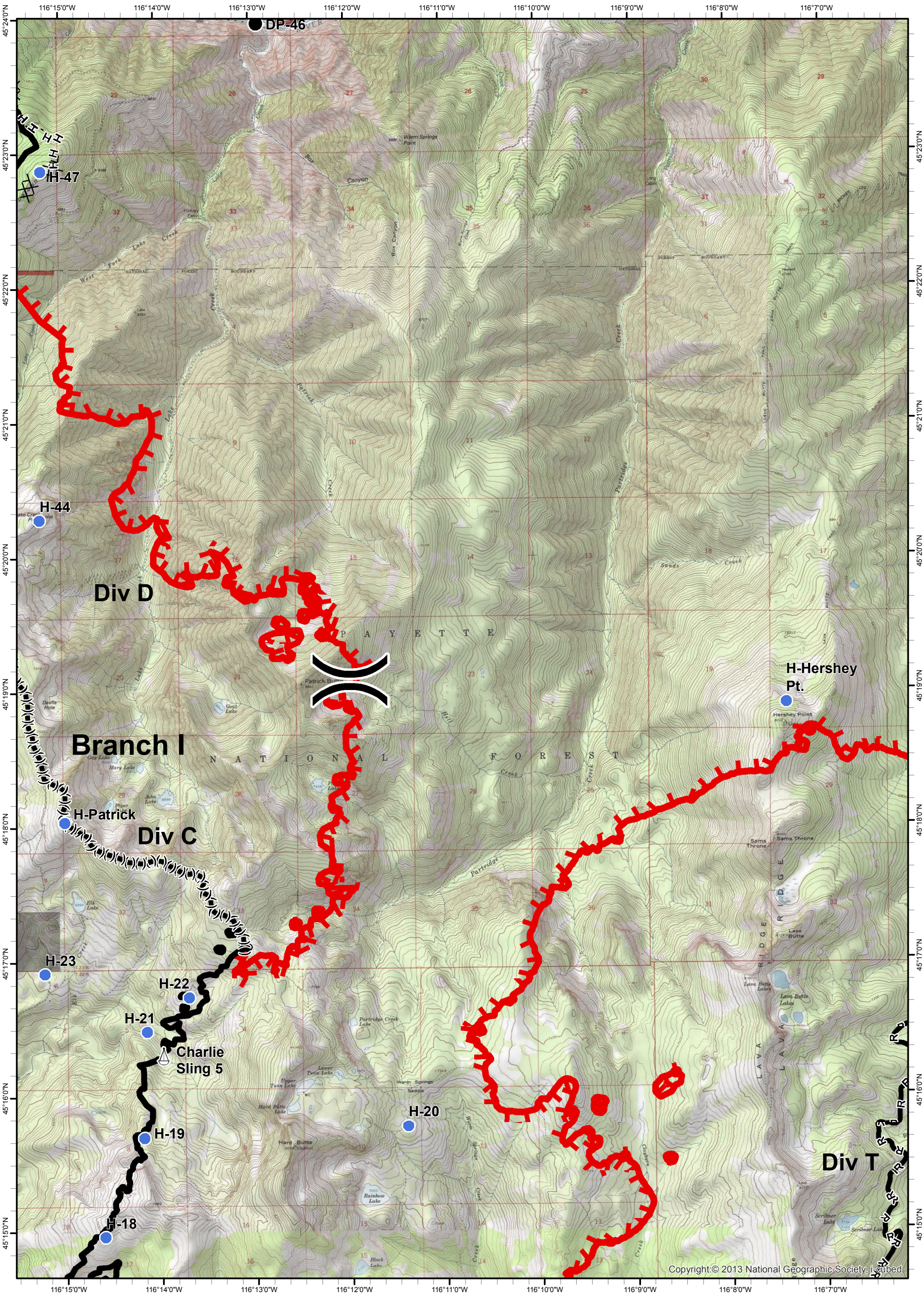
- ★ Cities/Towns
- (X) Division Breaks
- ⊙ Camp
- Drop Point
- 🚒 Lookout
- 📍 Helispot
- 🚢 Sling Site
- 🏠 Ranch
- 🌊 Water Source
- 📶 Mobile Weather Unit
- 🚧 Limited Access
- 🔥 Uncontrolled Fire Edge
- (X)(X)(X) Ridge / Geographic Feature
- ⊙ Proposed Dozer Line
- Completed Line
- ⊗ Completed Dozer Line
- H - H - Hand Line
- R - R - Road as Completed Line



Tepee Springs Fire  
 IAP 4  
 ID-PAF-000192  
 9/11/2015  
 94,903 Acres



- ★ Cities/Towns
- ( ) Division Breaks
- ⊙ Camp
- Drop Point
- 🚒 Lookout
- 🚁 Helispot
- 🚢 Sling Site
- 🏠 Ranch
- 🌊 Water Source
- 📶 Mobile Weather Unit
- 🚧 Limited Access
- 🔴 Uncontrolled Fire Edge
- ( )( ) Ridge / Geographic Feature
- ⊗ Proposed Dozer Line
- ▬ Completed Line
- ⊗⊗ Completed Dozer Line
- H - H - Hand Line
- R - R - Road as Completed Line



Tepee Springs Fire  
 IAP 5  
 ID-PAF-000192  
 9/11/2015  
 94,903 Acres



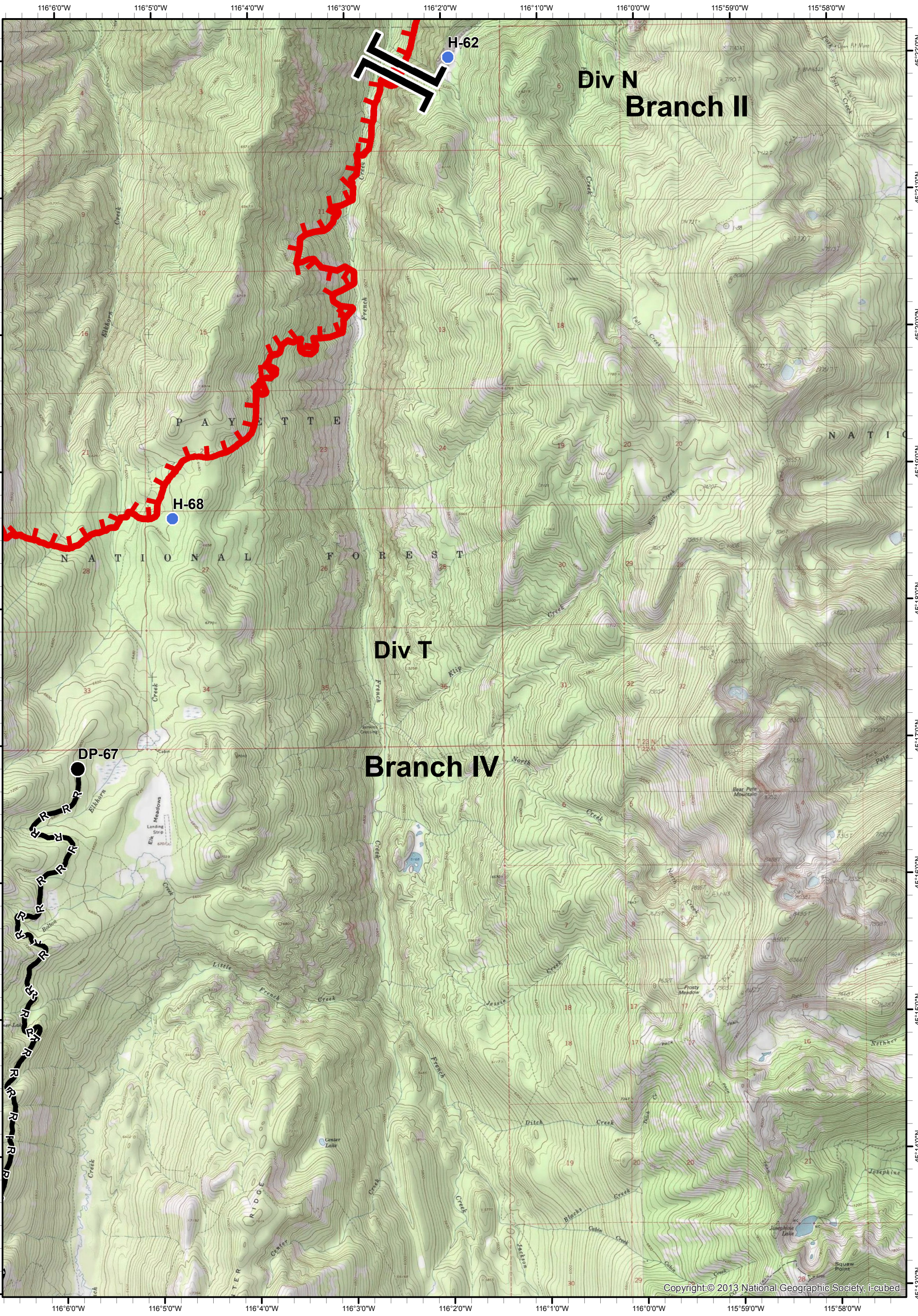
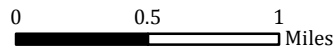
- ★ Cities/Towns
- ( ) Division Breaks
- ⊙ Camp
- Drop Point

- 🚒 Lookout
- 🚁 Helispot
- 🚢 Sling Site
- 🏠 Ranch

- 🌊 Water Source
- 📶 Mobile Weather Unit
- 🚧 Limited Access

- 🔥 Uncontrolled Fire Edge
- (X)(X)(X) Ridge / Geographic Feature
- ⊗ Proposed Dozer Line
- ▬ Completed Line

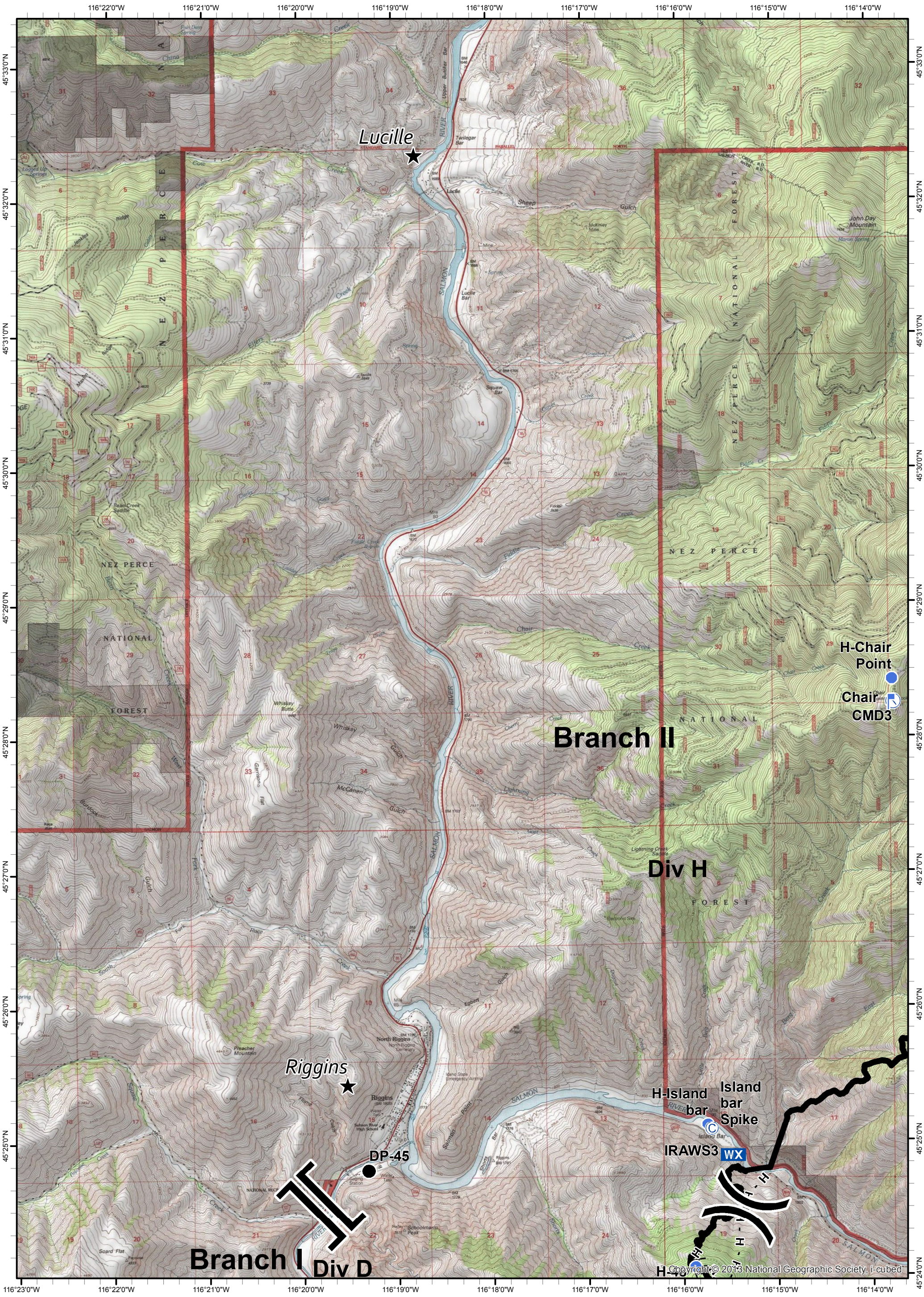
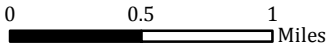
- ⊗ Completed Dozer Line
- H - H - Hand Line
- R - R - Road as Completed Line



Tepee Springs Fire  
 IAP 6  
 ID-PAF-000192  
 9/11/2015  
 94,903 Acres



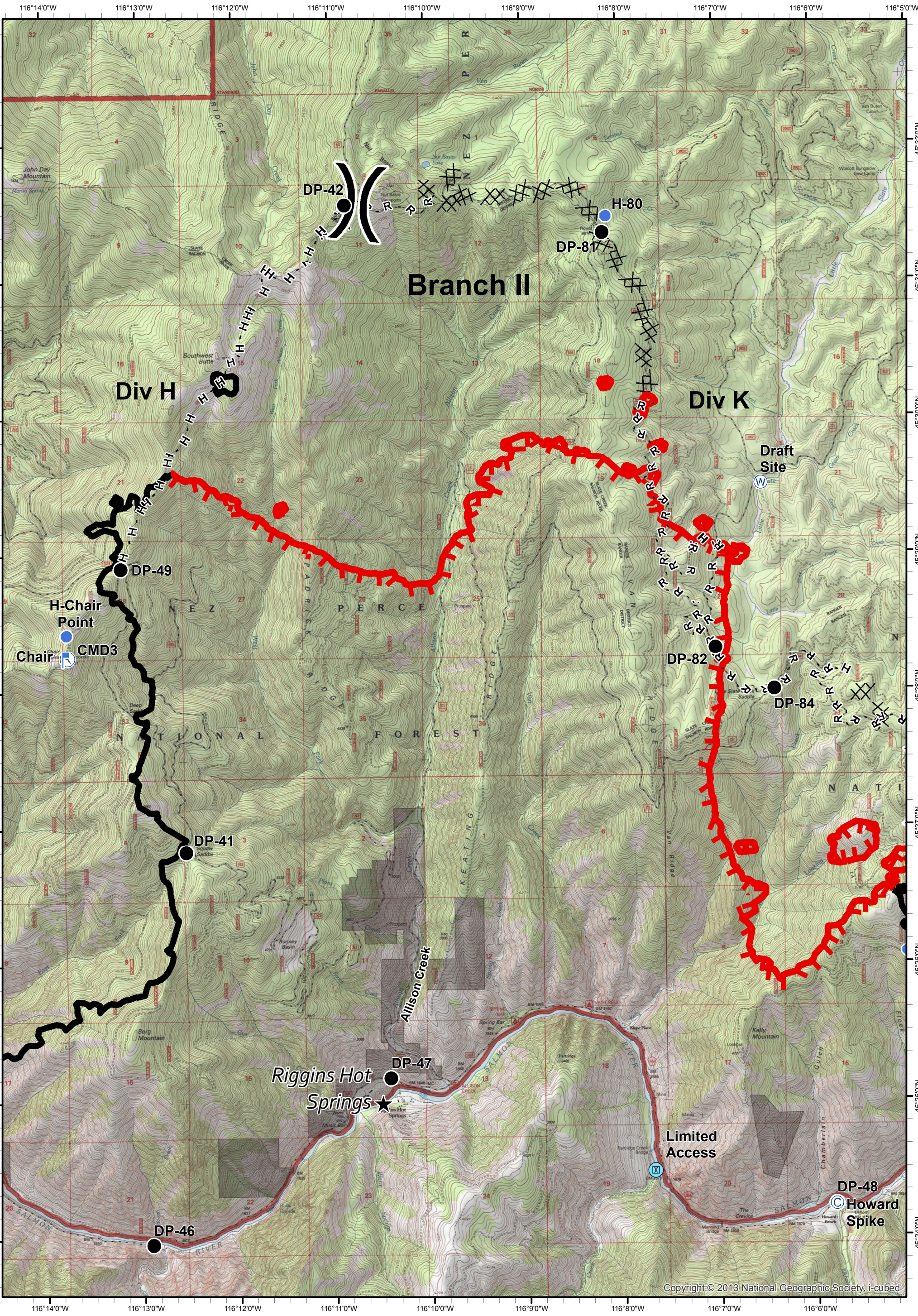
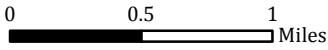
- ★ Cities/Towns
- (X) Division Breaks
- ⊙ Camp
- Drop Point
- 🚒 Lookout
- 🚁 Helispot
- 🚢 Sling Site
- ▲ Ranch
- 🌊 Water Source
- WX Mobile Weather Unit
- 🚧 Limited Access
- 🔴 Uncontrolled Fire Edge
- (X)(X)(X) Ridge / Geographic Feature
- ⊙ Proposed Dozer Line
- 🔴 Completed Line
- ⊗ Completed Dozer Line
- H - H - Hand Line
- R - R - Road as Completed Line



Tepee Springs Fire  
 IAP 7  
 ID-PAF-000192  
 9/11/2015  
 94,903 Acres

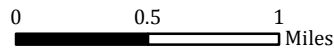


- ★ Cities/Towns
- ( ) Division Breaks
- ⊙ Camp
- Drop Point
- 🚒 Lookout
- 🚁 Helispot
- 🚢 Sling Site
- ▲ Ranch
- 🌊 Water Source
- WX Mobile Weather Unit
- 🚧 Limited Access
- 🔥 Uncontrolled Fire Edge
- ( )( ) Ridge / Geographic Feature
- ⊗ Proposed Dozer Line
- ⊘ Completed Line
- ⊗⊗ Completed Dozer Line
- H - H - Hand Line
- R - R - Road as Completed Line

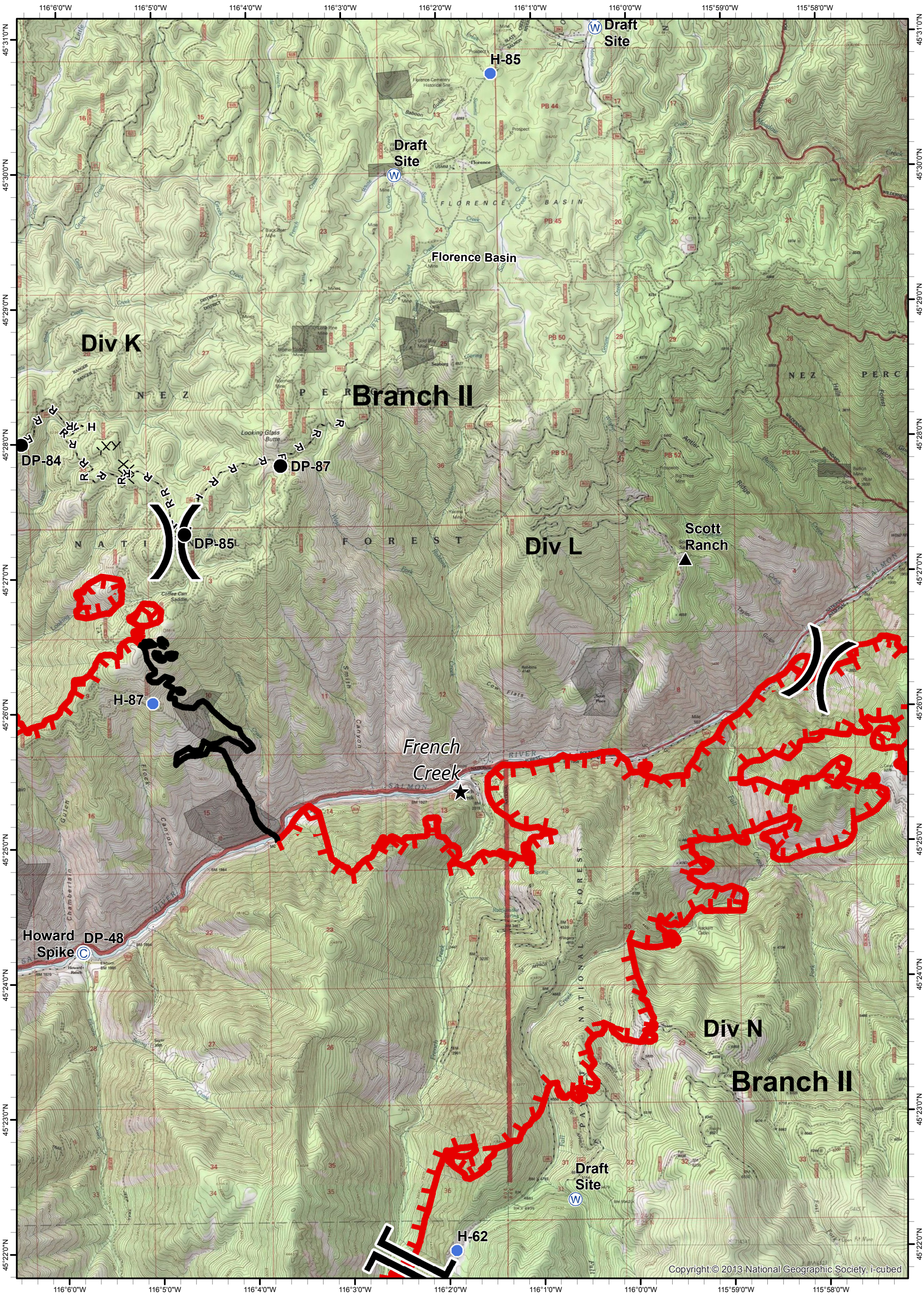




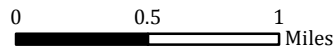
**Tepee Springs Fire**  
**IAP 8**  
**ID-PAF-000192**  
**9/11/2015**  
**94,903 Acres**



- ★ Cities/Towns
- ( ) Division Breaks
- ⊙ Camp
- Drop Point
- ⚡ Lookout
- Helipoint
- ⚓ Sling Site
- ▲ Ranch
- ⊙ Water Source
- WX Mobile Weather Unit
- ⊙ Limited Access
- Uncontrolled Fire Edge
- ( ) ( ) ( ) Ridge / Geographic Feature
- ⊙ Proposed Dozer Line
- Completed Line
- Completed Dozer Line
- H - H - Hand Line
- R - R - Road as Completed Line



Tepee Springs Fire  
 IAP 9  
 ID-PAF-000192  
 9/11/2015  
 94,903 Acres



- ★ Cities/Towns
- (X) Division Breaks
- ⊙ Camp
- Drop Point
- 🚒 Lookout
- 🚁 Helispot
- 🚢 Sling Site
- 🏠 Ranch
- 🌊 Water Source
- WX Mobile Weather Unit
- 🚧 Limited Access
- 🔴 Uncontrolled Fire Edge
- (X)(X)(X) Ridge / Geographic Feature
- ⊗ Proposed Dozer Line
- ▬ Completed Line
- ⊗⊗ Completed Dozer Line
- H - H - Hand Line
- R - R - Road as Completed Line

