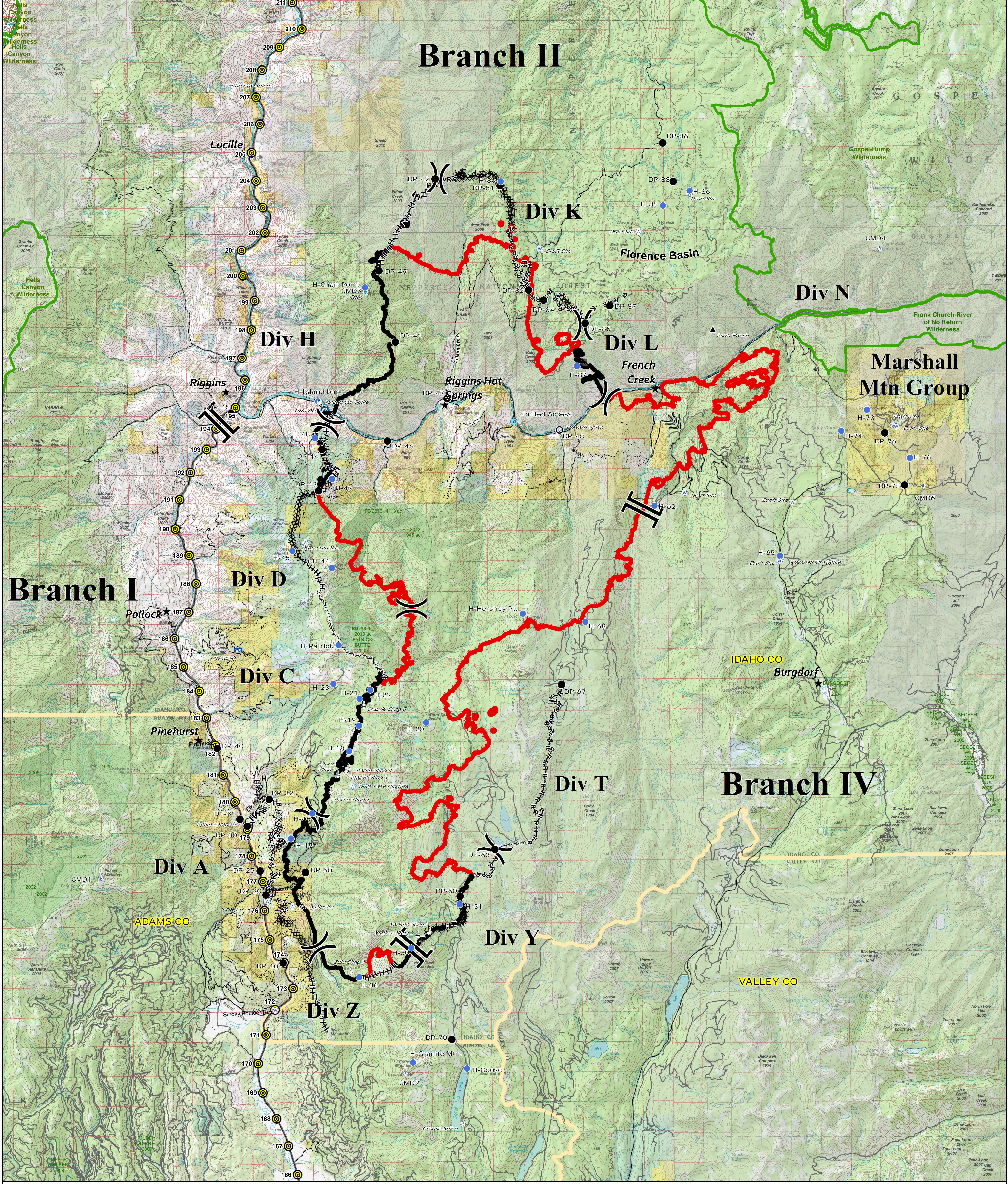



Branch II



Briefing Area
 Tepee Springs
 95,082 Acres
 ID-PAF-000192
 9/12/2015
 As of 9/10/2015 at 2131



I	Branch Break	⬇	Lookout		Uncontrolled Fire Edge	H-H-H	Hand Line	★	Cities/Towns
)	Division Break	⚙	Sling Site		Completed Line	R-R-R	Road as Completed Line	⊙	MilePosts/Signs
⊙	Camp	Ⓜ	Repeater	(XXXXXX)	Ridge / Geographic Feature		Proposed Dozer Line		County
●	Drop Point	Ⓜ	Mobile Weather Unit		Completed Dozer Line		Wilderness Boundary		Fire Hist 1999-2013 (+1994)
Ⓜ	Helibase	▲	Ranch						
Ⓜ	Helispot	Ⓜ	Limited Access						
W	Water Source								

