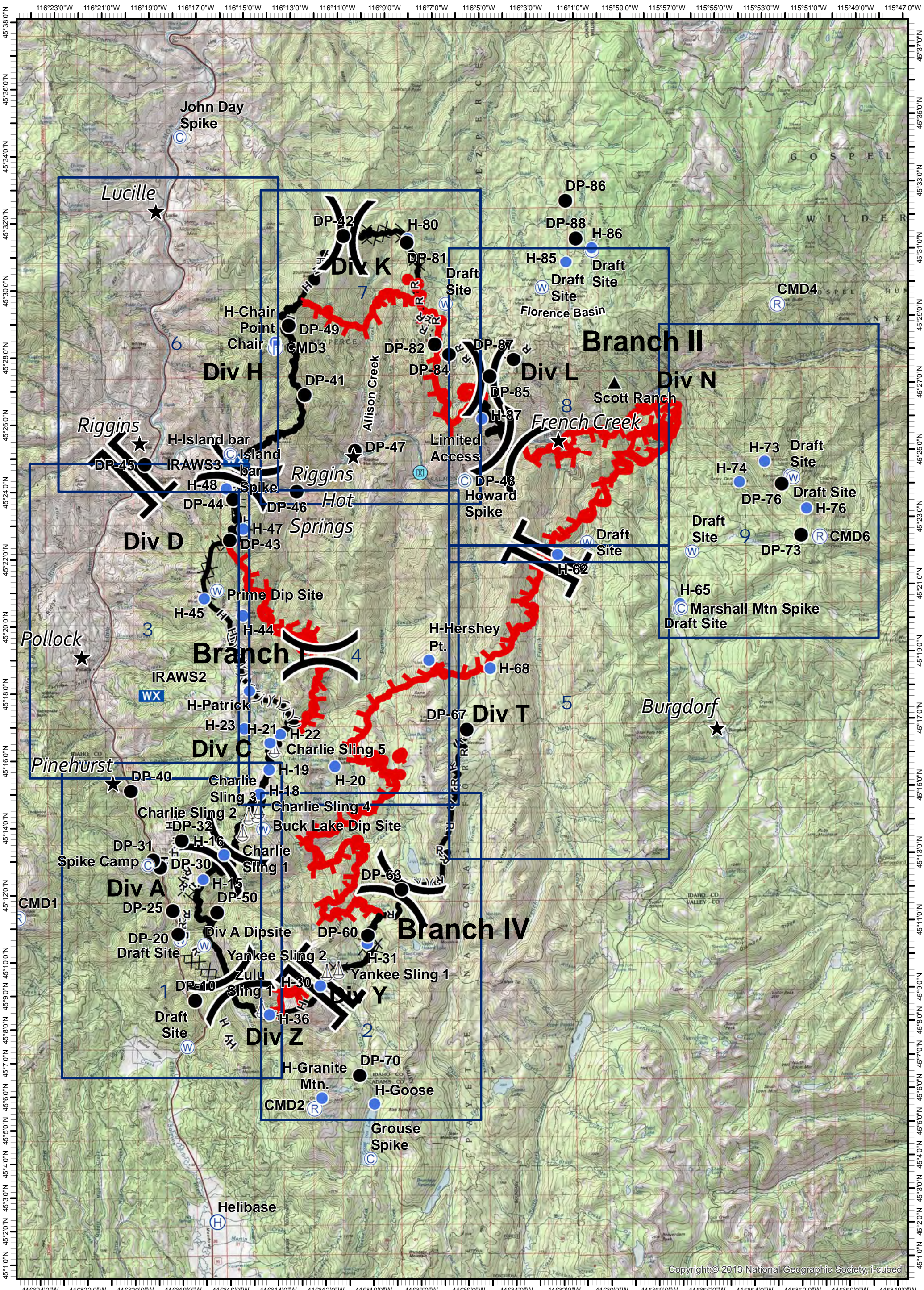


Tepee Springs Fire
 IAP Overview Map
 ID-PAF-000192
 9/12/2015
 95,082 Acres

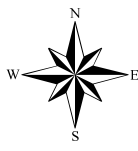


- ★ Cities/Towns
- () Division Breaks
- ⊙ Camp
- Drop Point
- 📏 Lookout
- ⊙ Helispot
- ⚓ Sling Site
- ▲ Ranch
- ⊙ Water Source
- WX Mobile Weather Unit
- ⊙ Limited Access
- 🔴 Uncontrolled Fire Edge
- (X)(X)(X) Ridge / Geographic Feature
- ⊙ Proposed Dozer Line
- Completed Line
- ⊗ Completed Dozer Line
- H - H - Hand Line
- R - R - Road as Completed Line

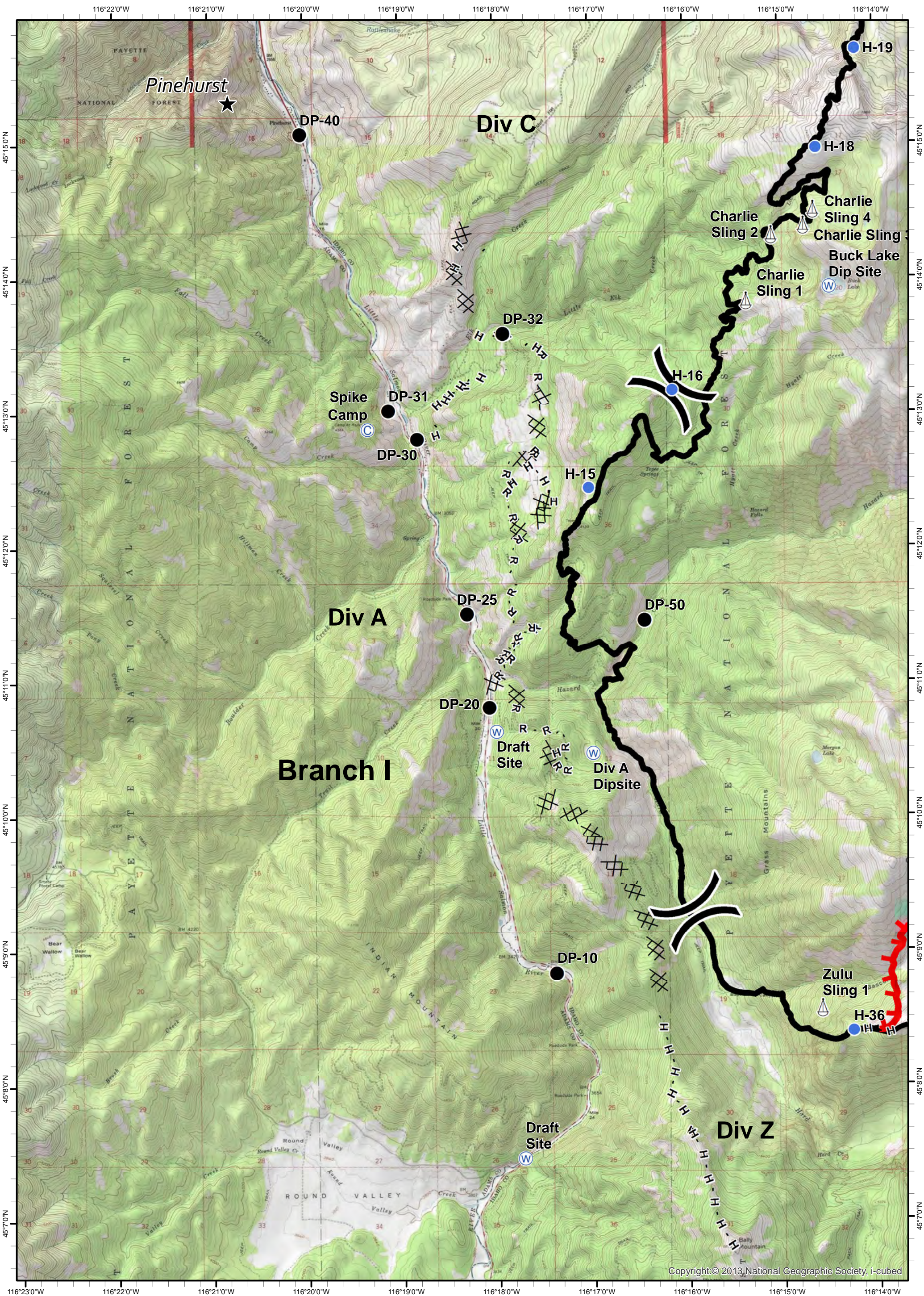
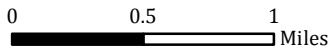
0 0.5 1
 Miles



Tepee Springs Fire
 IAP 1
 ID-PAF-000192
 9/12/2015
 95,082 Acres



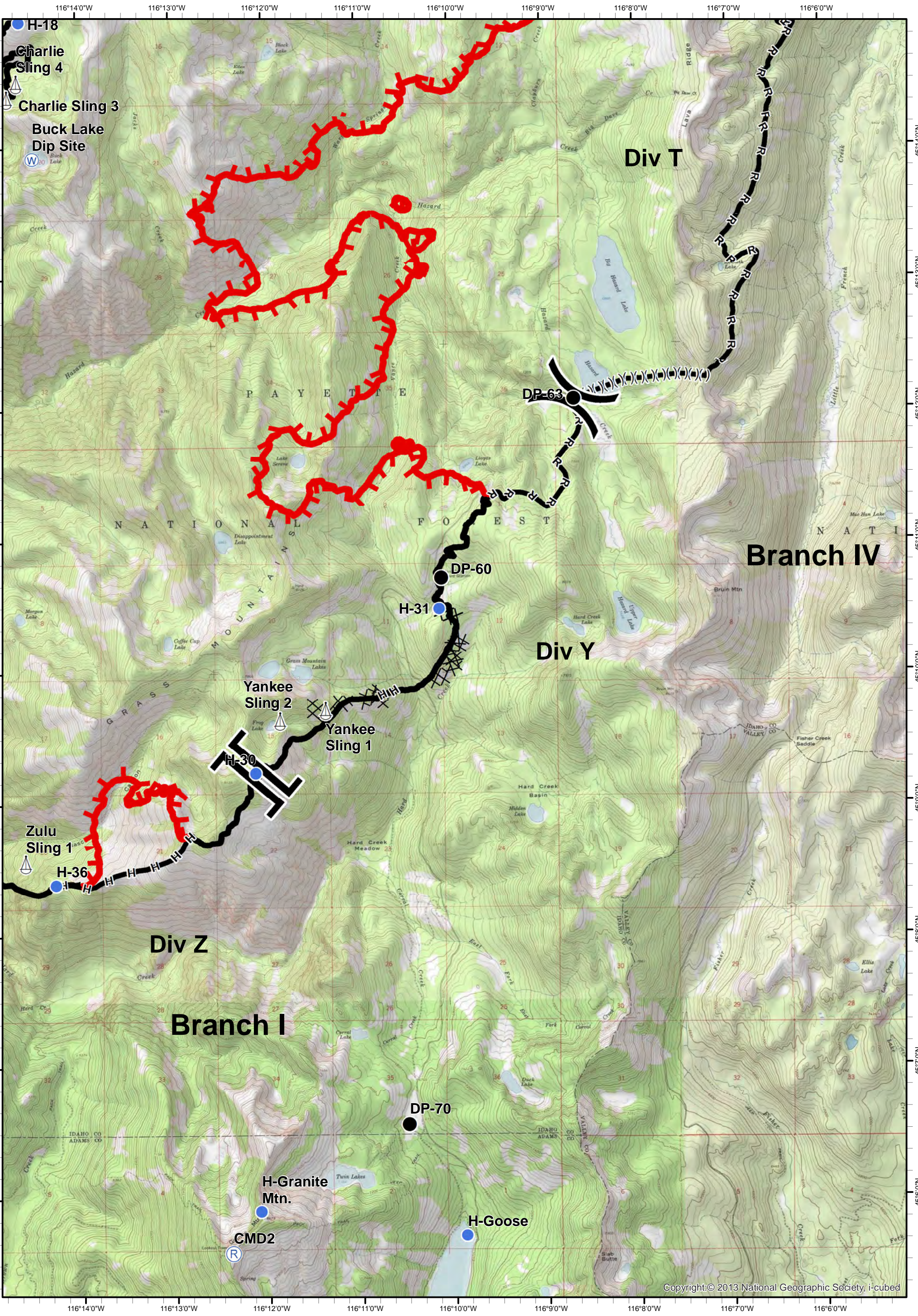
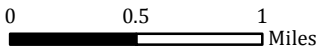
- ★ Cities/Towns
- () Division Breaks
- ⊙ Camp
- Drop Point
- 🚒 Lookout
- 🚁 Helispot
- 🚢 Sling Site
- 🏠 Ranch
- 🌊 Water Source
- WX Mobile Weather Unit
- 🚧 Limited Access
- 🔴 Uncontrolled Fire Edge
- (X)(X)(X) Ridge / Geographic Feature
- ⊗ Proposed Dozer Line
- Completed Line
- ⊗ Completed Dozer Line
- H - H - Hand Line
- R - R - Road as Completed Line



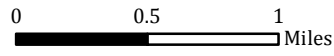
Tepee Springs Fire
 IAP 2
 ID-PAF-000192
 9/12/2015
 95,082 Acres



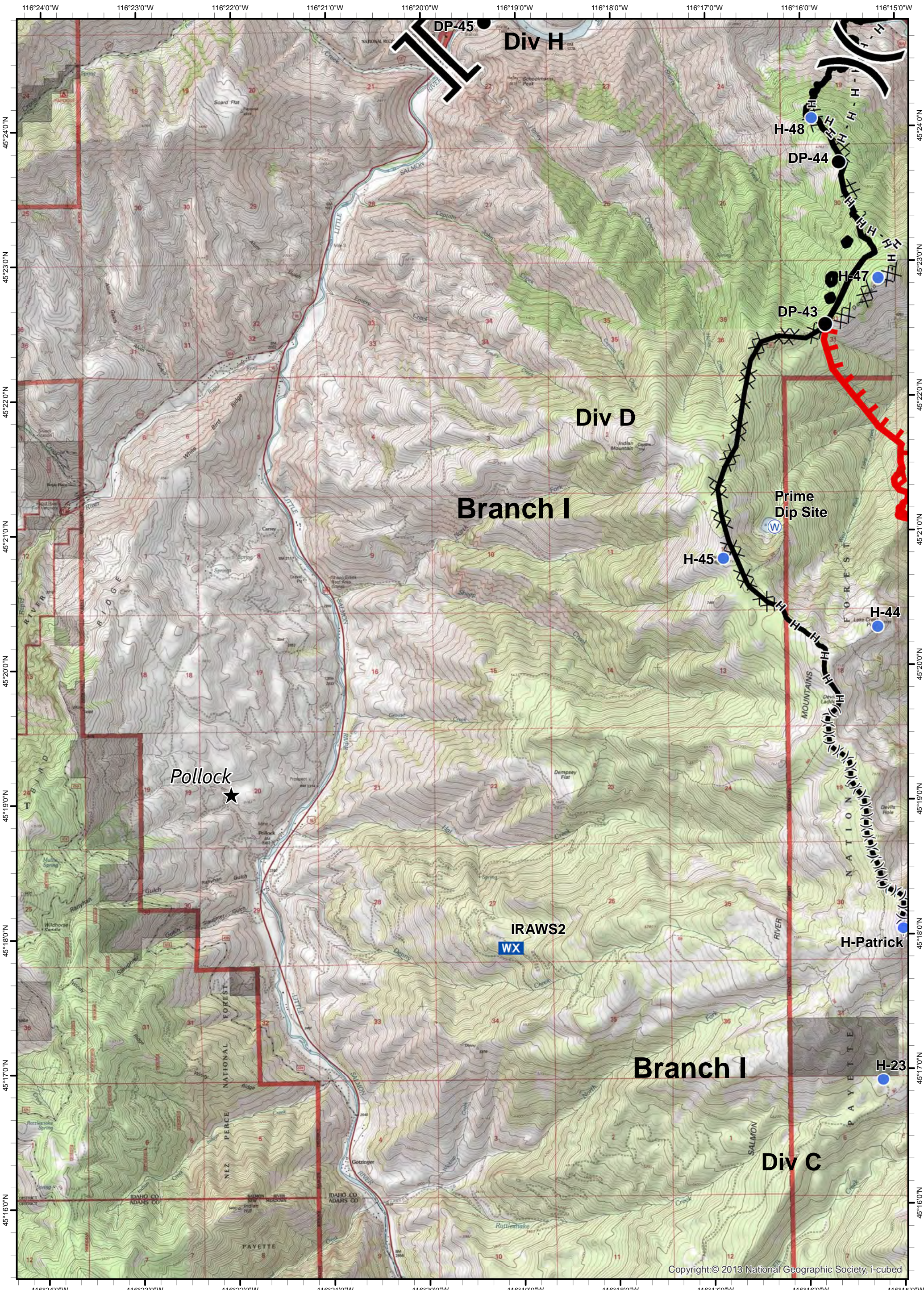
- ★ Cities/Towns
- () Division Breaks
- ⊙ Camp
- Drop Point
- 🚒 Lookout
- 🚁 Helispot
- 🚧 Sling Site
- 🏠 Ranch
- 🌊 Water Source
- WX Mobile Weather Unit
- 🚫 Limited Access
- 🔴 Uncontrolled Fire Edge
- (X)(X)(X) Ridge / Geographic Feature
- ⊗ Proposed Dozer Line
- Completed Line
- ⊗ Completed Dozer Line
- H - H - Hand Line
- R - R - Road as Completed Line



Tepee Springs Fire
 IAP 3
 ID-PAF-000192
 9/12/2015
 95,082 Acres



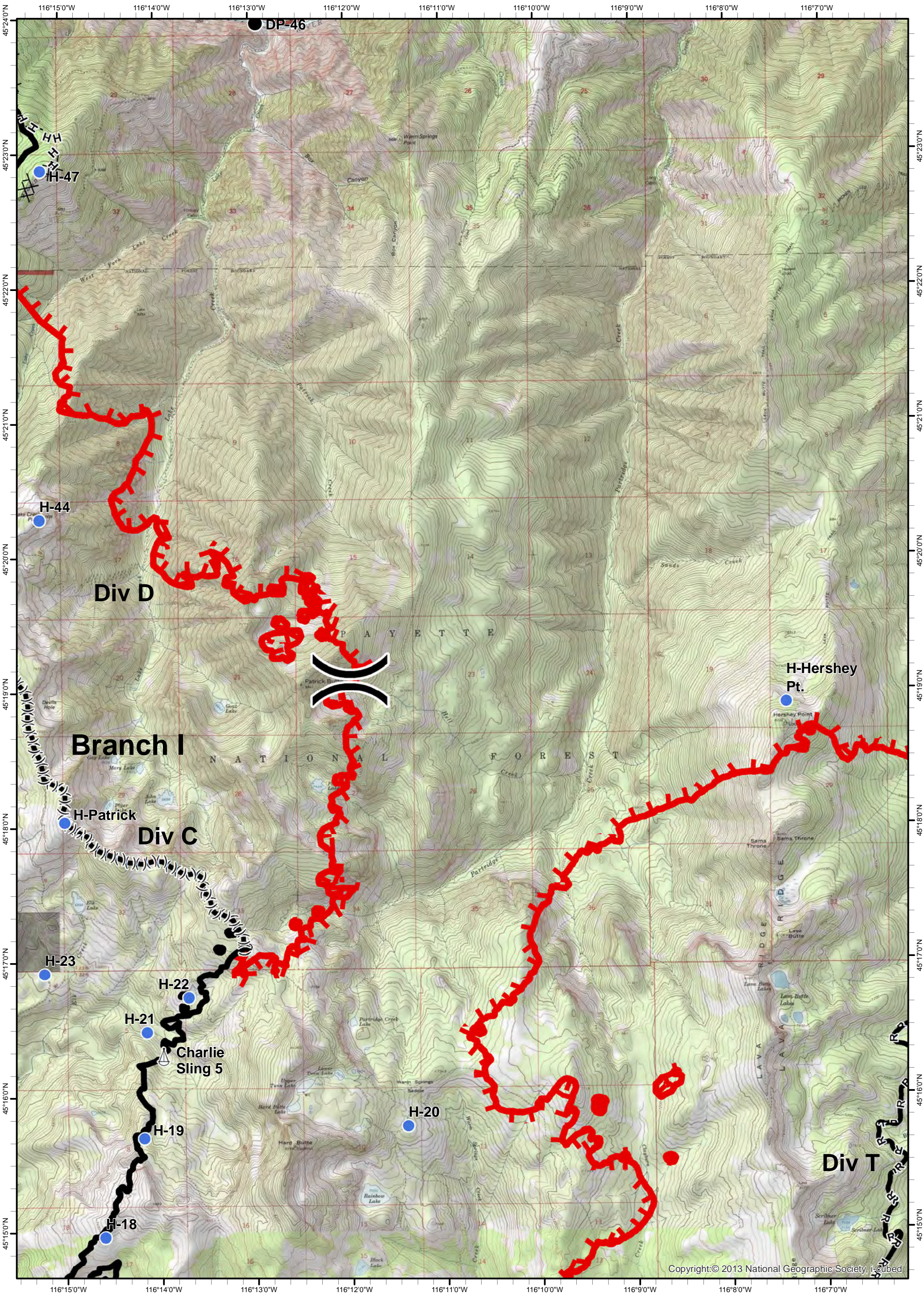
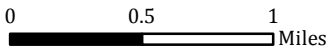
- ★ Cities/Towns
- () Division Breaks
- ⊙ Camp
- Drop Point
- 🚒 Lookout
- 📍 Helispot
- 🚰 Sling Site
- 🏠 Ranch
- 🌊 Water Source
- 📶 Mobile Weather Unit
- 🚧 Limited Access
- 🔴 Uncontrolled Fire Edge
- ()() Ridge / Geographic Feature
- ⊗ Proposed Dozer Line
- Completed Line
- ⊗ Completed Dozer Line
- H - H - Hand Line
- R - R - Road as Completed Line



Tepee Springs Fire
 IAP 4
 ID-PAF-000192
 9/12/2015
 95,082 Acres



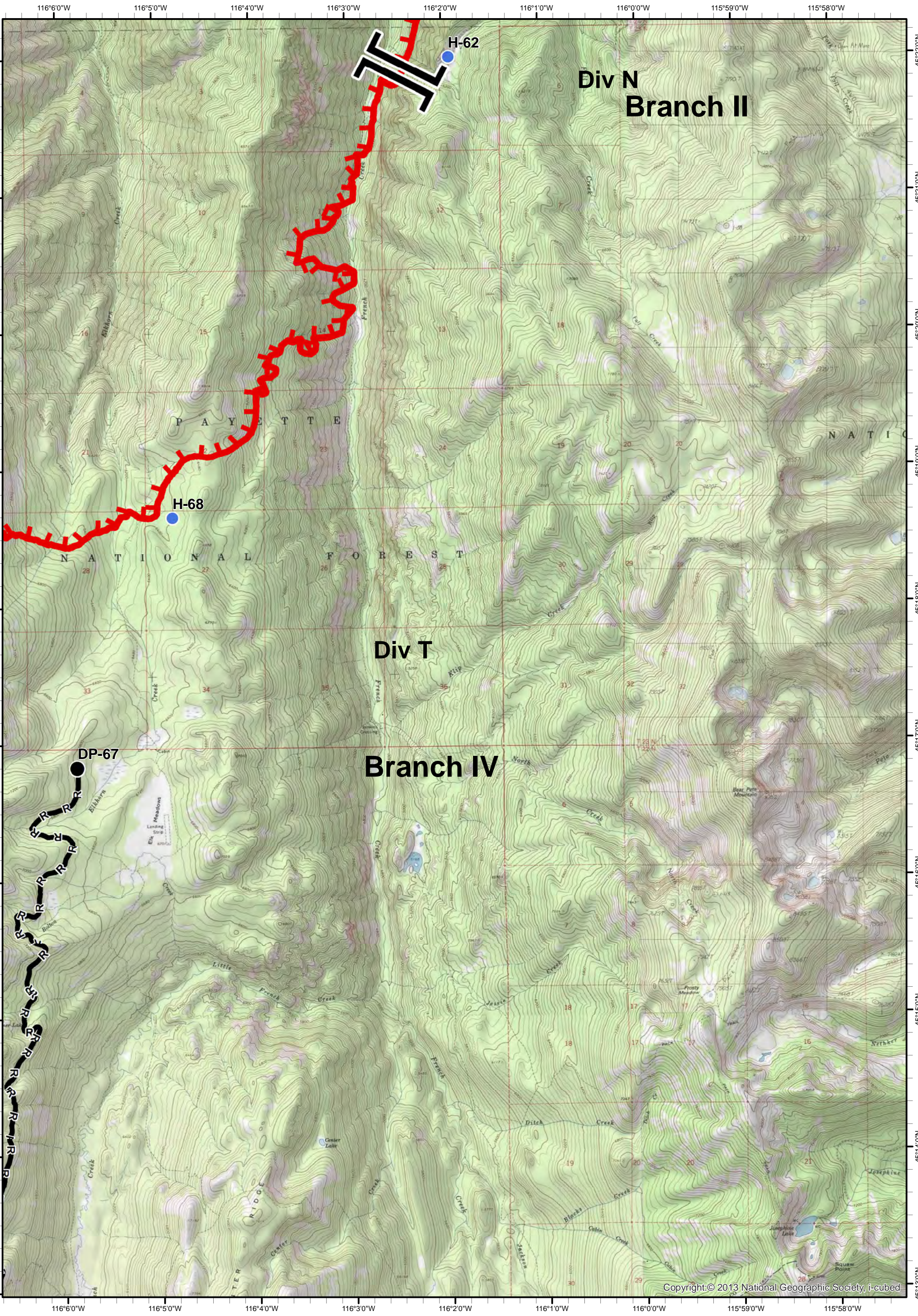
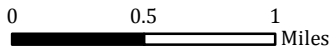
- ★ Cities/Towns
- () Division Breaks
- ⊙ Camp
- Drop Point
- 🚒 Lookout
- 🚁 Helispot
- 🚢 Sling Site
- 🏠 Ranch
- 🌊 Water Source
- WX Mobile Weather Unit
- 🚫 Limited Access
- 🔴 Uncontrolled Fire Edge
- (X)(X)(X) Ridge / Geographic Feature
- ⊗ Proposed Dozer Line
- ▬ Completed Line
- ⊗ Completed Dozer Line
- H - H - Hand Line
- R - R - Road as Completed Line



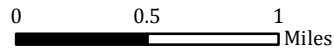
Tepee Springs Fire
 IAP 5
 ID-PAF-000192
 9/12/2015
 95,082 Acres



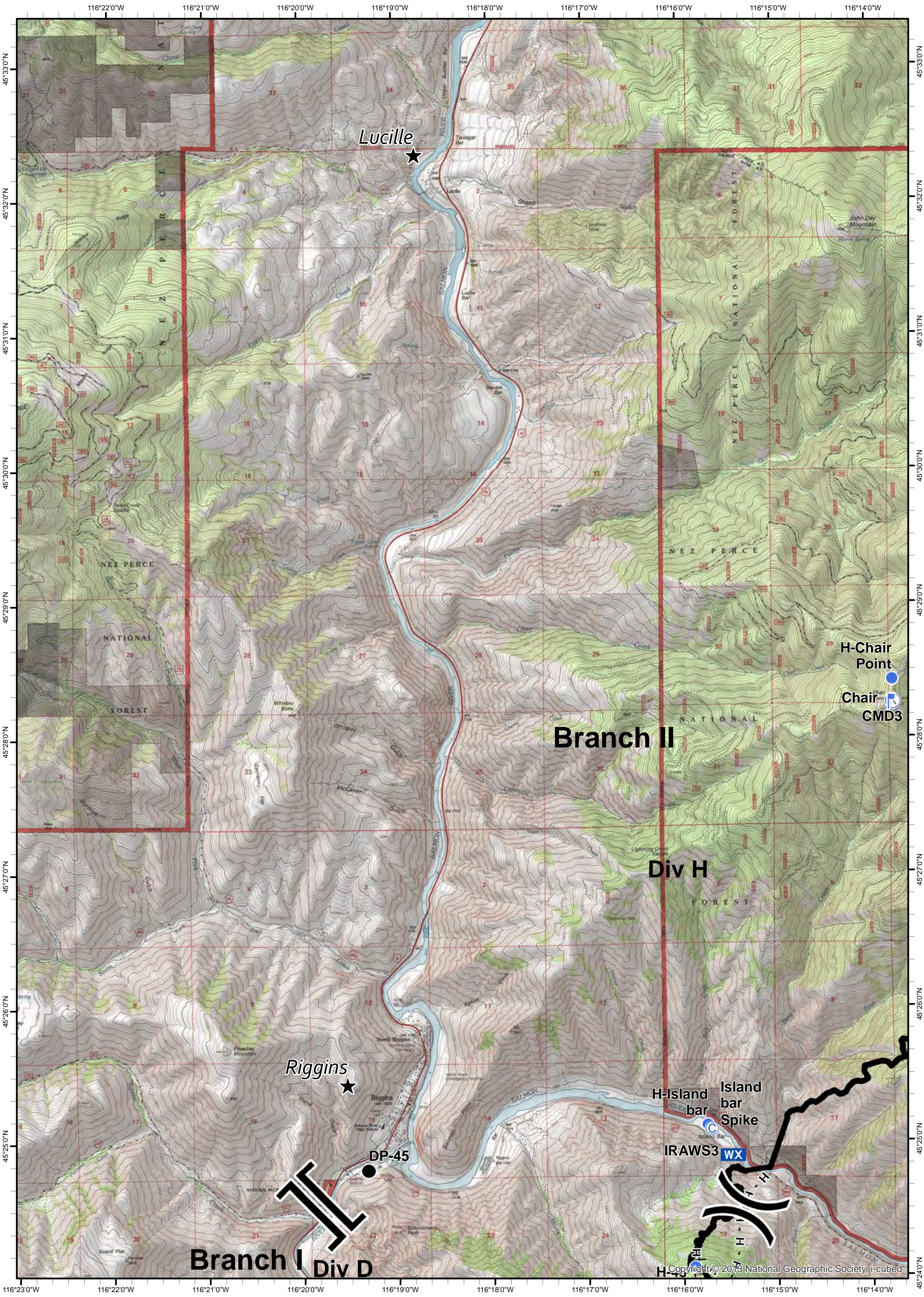
- ★ Cities/Towns
- () Division Breaks
- ⊙ Camp
- Drop Point
- 🚒 Lookout
- 🚁 Helispot
- 🚧 Sling Site
- 🏠 Ranch
- 🌊 Water Source
- WX Mobile Weather Unit
- 🚫 Limited Access
- 🔴 Uncontrolled Fire Edge
- (X)(X)(X) Ridge / Geographic Feature
- ⊗ Proposed Dozer Line
- ▬ Completed Line
- ⊗ Completed Dozer Line
- H - H - Hand Line
- R - R - Road as Completed Line



Tepee Springs Fire
IAP 6
ID-PAF-000192
9/12/2015
95,082 Acres



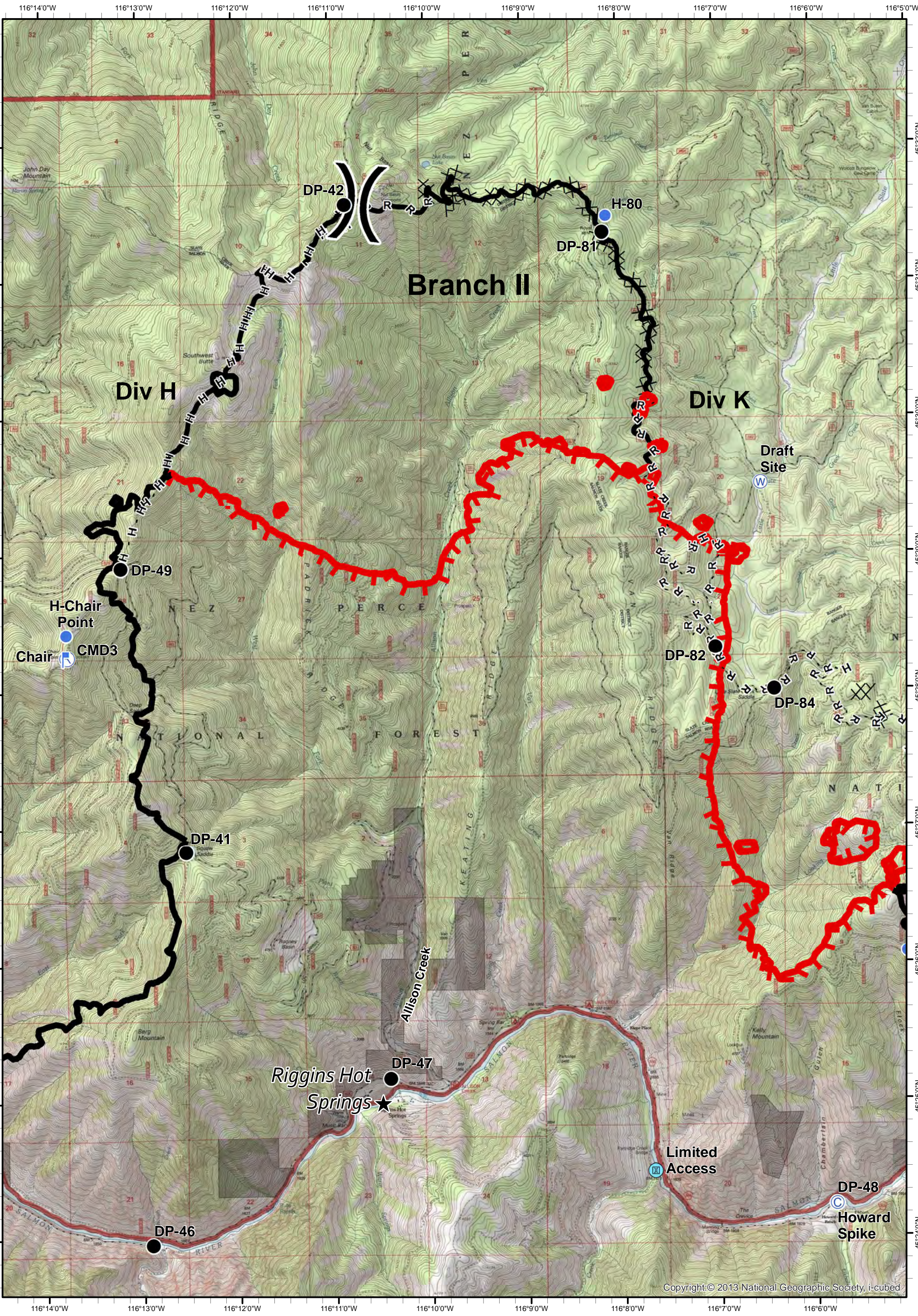
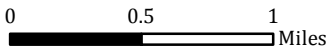
- ★ Cities/Towns
- () Division Breaks
- ⊙ Camp
- Drop Point
- 🚒 Lookout
- 🌀 Helispot
- ⚓ Sling Site
- ▲ Ranch
- 🌊 Water Source
- WX Mobile Weather Unit
- Ⓜ Limited Access
- 🔴 Uncontrolled Fire Edge
- (X)(X)(X) Ridge / Geographic Feature
- ⊗ Proposed Dozer Line
- ▬ Completed Line
- ⊗ Completed Dozer Line
- H - H - Hand Line
- R - R - Road as Completed Line



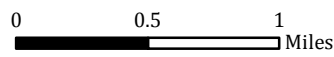
Tepee Springs Fire
 IAP 7
 ID-PAF-000192
 9/12/2015
 95,082 Acres



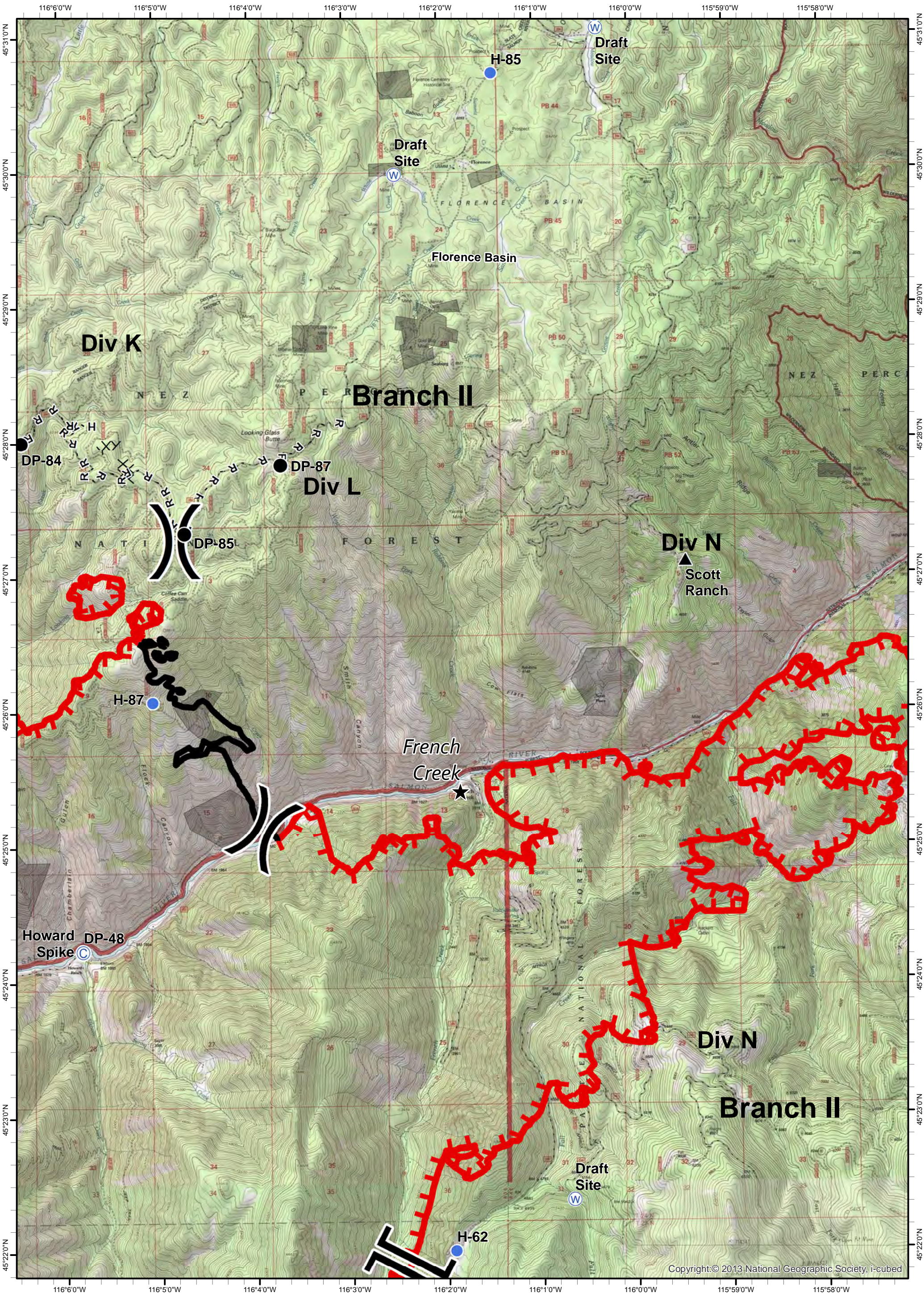
- ★ Cities/Towns
- () Division Breaks
- ⊙ Camp
- Drop Point
- 🚒 Lookout
- 🚁 Helispot
- ⚙️ Sling Site
- ▲ Ranch
- 🌊 Water Source
- WX Mobile Weather Unit
- Ⓜ️ Limited Access
- 🔴 Uncontrolled Fire Edge
- (X)(X)(X) Ridge / Geographic Feature
- ⊗ Proposed Dozer Line
- ▬ Completed Line
- ⊗ Completed Dozer Line
- H - H - Hand Line
- R - R - Road as Completed Line



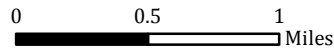
Tepee Springs Fire
 IAP 8
 ID-PAF-000192
 9/12/2015
 95,082 Acres



- ★ Cities/Towns
- () Division Breaks
- ⊙ Camp
- Drop Point
- 🚒 Lookout
- 🚁 Helispot
- 🚢 Sling Site
- 🏠 Ranch
- 🌊 Water Source
- 📶 Mobile Weather Unit
- 🚧 Limited Access
- 🔴 Uncontrolled Fire Edge
- (X)(X)(X) Ridge / Geographic Feature
- ⊗ Proposed Dozer Line
- ▬ Completed Line
- ⊗⊗ Completed Dozer Line
- H - H - Hand Line
- R - R - Road as Completed Line



Tepee Springs Fire
 IAP 9
 ID-PAF-000192
 9/12/2015
 95,082 Acres



- ★ Cities/Towns
- () Division Breaks
- ⊙ Camp
- Drop Point
- 🚒 Lookout
- 📍 Helispot
- ⚓ Sling Site
- 🏠 Ranch
- 🌊 Water Source
- WX Mobile Weather Unit
- Ⓜ Limited Access
- 🔴 Uncontrolled Fire Edge
- (X)(X)(X) Ridge / Geographic Feature
- ⊗ Proposed Dozer Line
- ▬ Completed Line
- ⊗ Completed Dozer Line
- H - H - Hand Line
- R - R - Road as Completed Line

