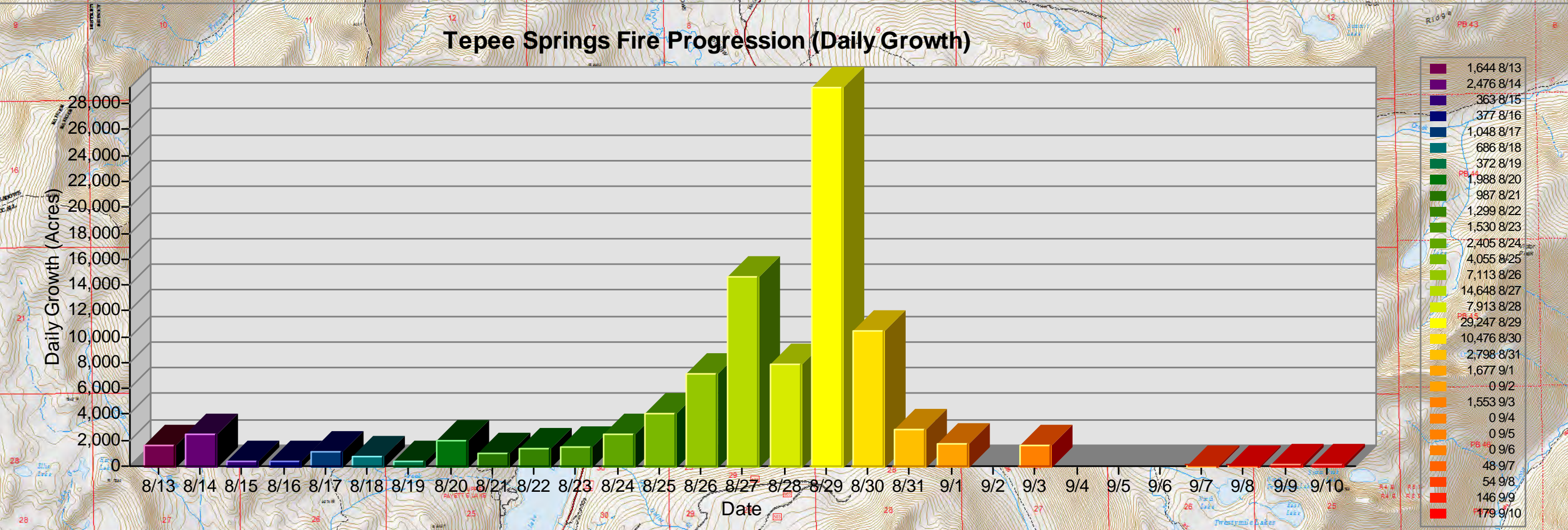


Color	Date	Daily Growth	Total Acres
Dark Purple	8/13/2015	1,644	1,644
Purple	8/14/2015	2,476	4,120
Dark Blue	8/15/2015	363	4,483
Blue	8/16/2015	377	4,860
Teal	8/17/2015	1,048	5,907
Green-Teal	8/18/2015	686	6,594
Green	8/19/2015	372	6,966
Light Green	8/20/2015	1,988	8,953
Yellow-Green	8/21/2015	987	9,940
Yellow	8/22/2015	1,299	11,240
Light Yellow	8/23/2015	1,530	12,770
Yellow	8/24/2015	2,405	15,175
Light Yellow	8/25/2015	4,055	19,230
Yellow	8/26/2015	7,113	26,343
Light Yellow	8/27/2015	14,649	40,992
Yellow	8/28/2015	7,913	48,883
Light Yellow	8/29/2015	29,247	78,130
Yellow	8/30/2015	10,476	88,628
Light Yellow	8/31/2015	2,795	91,423
Orange	9/1/2015	1,677	93,102
Light Orange	9/2/2015	0	93,102
Orange	9/3/2015	1,553	94,655
Light Orange	9/4/2015	0	94,655
Orange	9/5/2015	0	94,655
Light Orange	9/6/2015	0	94,655
Orange	9/7/2015	48	94,703
Light Orange	9/8/2015	54	94,757
Red-Orange	9/9/2015	146	94,903
Red	9/10/2015	179	95,082
Dark Red	9/11/2015	218	95,300



Progression
 Tepee Springs
 95,300 Acres
 ID-PAF-000192
 9/12/2015
 Printed: 9/12/2015 at 2100hrs

Tepee Springs Historical Weather & Weather Awareness Matrix Output

← Observed Fire Weather from Teapot RAWs Forecasted Weather →

Observed Conditions:	14-Aug	15-Aug	16-Aug	17-Aug	18-Aug	19-Aug	20-Aug	21-Aug	22-Aug	23-Aug	24-Aug	25-Aug	26-Aug	27-Aug	28-Aug	29-Aug	30-Aug	31-Aug	1-Sep	2-Sep	3-Sep	4-Sep	5-Sep	6-Sep	7-Sep	8-Sep	9-Sep	10-Sep	11-Sep	12-Sep	13-Sep	14-Sep	15-Sep	Forecasted Conditions:
Min/T/Max/T	60/88	53/89	49/78	48/79	47/77	49/78	49/80	52/80	48/77	45/78	53/86	53/89	54/90	61/92	53/85	63/84	56/81	42/71	46/80	56/82	45/74	45/76	41/55	35/58	36/65	38/69	40/77	40/80	42/84	45/89	48/87	50/84	47/85	Forecasted Min/T/Max/T
Moist/Moist	75%/23%	65%/17%	53%/20%	58%/18%	59%/16%	59%/22%	68%/16%	41%/11%	52%/13%	50%/10%	44%/8%	43%/12%	41%/11%	41%/9%	49%/14%	41%/18%	54%/21%	73%/28%	64%/21%	43%/20%	91%/53%	90%/45%	95%/31%	93%/35%	88%/30%	74%/18%	81%/22%	80%/18%	68%/17%	65%/15%	63%/10%	66%/22%	73%/24%	Forecasted Moist/Moist
Wind Afternoon	SW 12	W 3	SE 4	N 3	SE 3	W 11	SW 7	N 4	W 3	SW 3	NW 2	W 2	S 11	W 12	SW 8	SW 13	SW 6	S 10	S 8	NW 10	NW 7	S 10	S 9	W 6	SW 9	Terrain 8	SW 10	W 10	W 10	W 10	W 10	W 10	Forecasted Wind Afternoon	
Haines Index	2	2	2	2	3	4	3	3	4	4	4	5	6	4	4	3	2	2	3	3	3	3	3	3	3	3	3	3	3	3	3	3	Forecasted Haines Index	
Daily Fire Growth (Acres)	2,476	363	377	1,644	686	372	1,988	987	1,299	1,530	2,405	4,055	7,113	14,649	7,913	29,247	10,476	2,795	1,677	NA	1,553	NA	NA	NA	NA	0	0	0	0	0	0	0	Forecasted Daily Fire Growth (Acres)	
Total Fire Size (Acres)	4,120	4,483	4,860	5,907	6,594	6,966	8,953	9,940	11,240	12,770	15,175	19,230	26,343	40,992	48,883	78,130	88,628	91,423	93,102	93,102	94,655	94,655	94,655	94,655	94,655	94,703	94,757	94,903	95,082	95,300	95,300	Forecasted Total Fire Size (Acres)		

