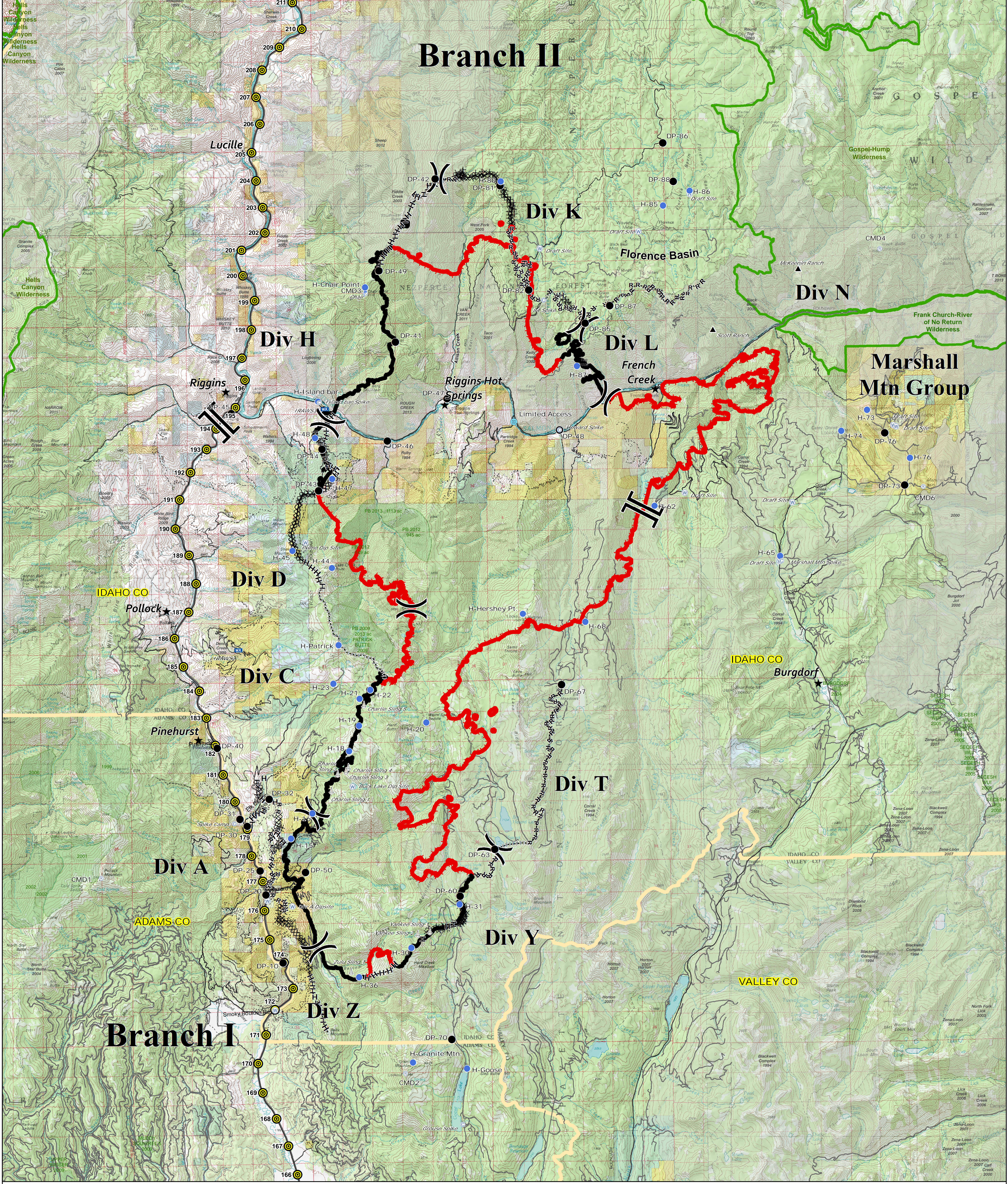


Branch II



Briefing Area
 Tepee Springs
 95,300 Acres
 ID-PAF-000192
 9/13/2015 0600
 Perimeter 9/11/2015 at 2022



I	Branch Break	⚡	Lookout	—	Uncontrolled Fire Edge	H-H-H	Hand Line	★	Cities/Towns
)	Division Break	⚙	Sling Site	—	Completed Line	R-R-R	Road as Completed Line	⊙	MilePosts/Signs
⊙	Camp	⊙	Repeater	(XXXXXX)	Ridge / Geographic Feature	⊗	Proposed Dozer Line	⬜	County
●	Drop Point	⊗	Mobile Weather Unit	XXXXXX	Completed Dozer Line			⬜	Wilderness Boundary
⊙	Helibase	▲	Ranch					⬜	Fire Hist 1999-2013 (+1994)
⊙	Helispot	⊙	Limited Access						
⊙	Water Source								

