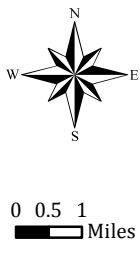
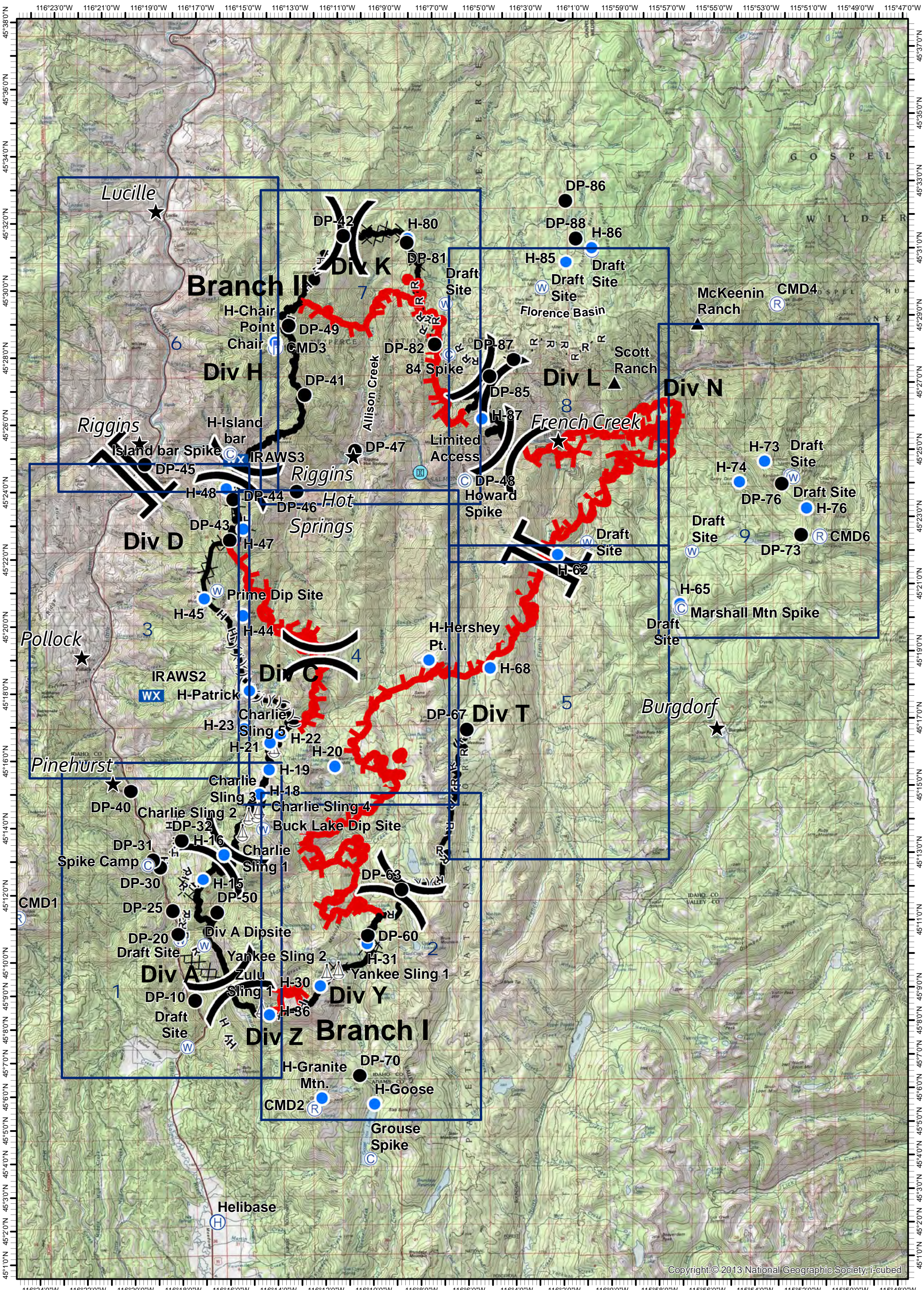


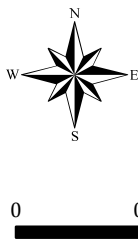
Tepee Springs Fire
IAP Overview Map
ID-PAF-000192
9/13/2015
95,300 Acres



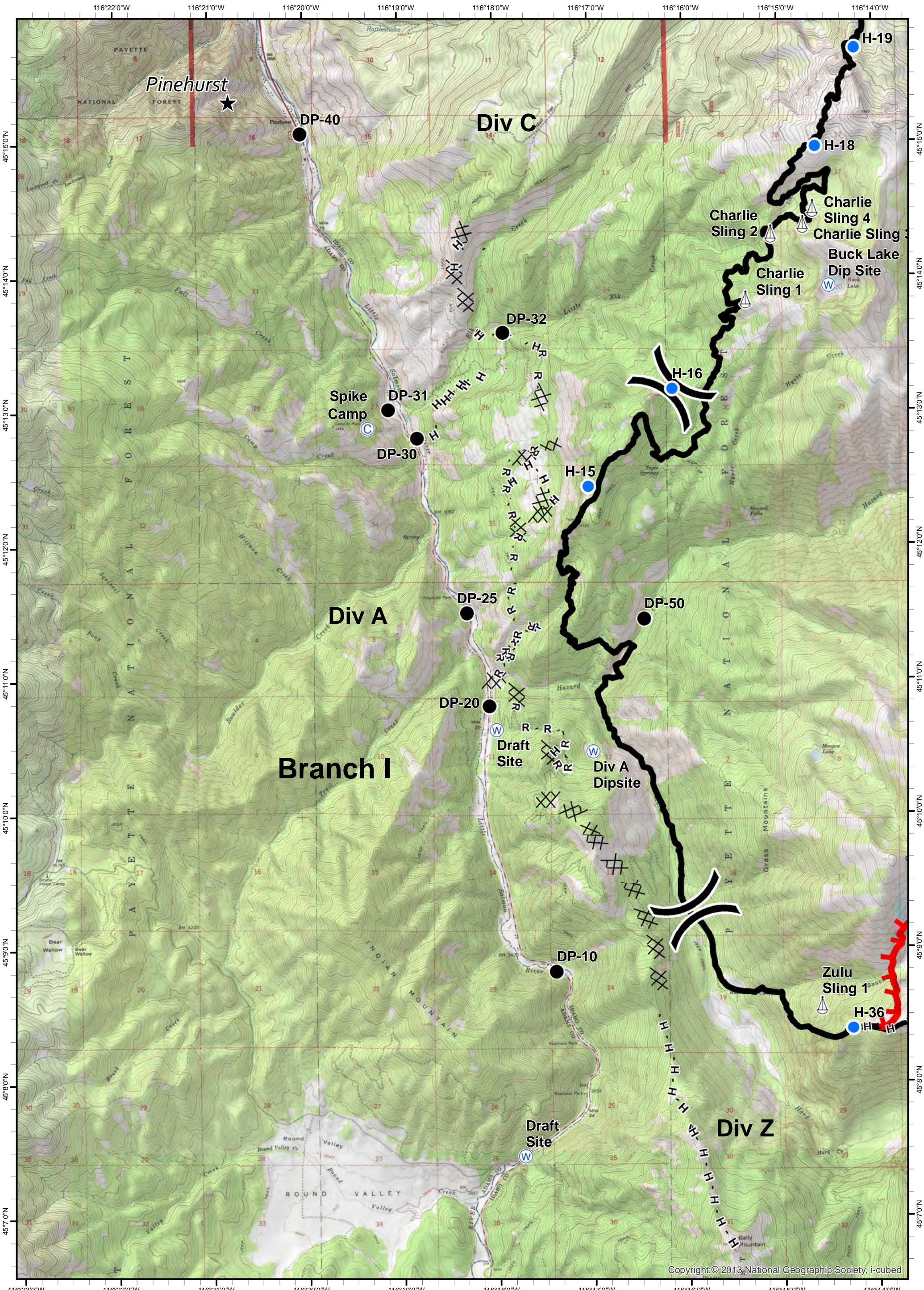
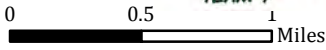
- ★ Cities/Towns
- () Division Breaks
- ⊙ Camp
- Drop Point
- ⚡ Lookout
- Helispot
- ⚓ Sling Site
- ▲ Ranch
- ⊙ Water Source
- WX Mobile Weather Unit
- ⊙ Limited Access
- Uncontrolled Fire Edge
- (X)(X)(X) Ridge / Geographic Feature
- Proposed Dozer Line
- Completed Line
- Completed Dozer Line
- H - H - Hand Line
- R - R - Road as Completed Line



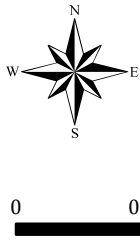
Tepee Springs Fire
 IAP 1
 ID-PAF-000192
 9/13/2015
 95,300 Acres



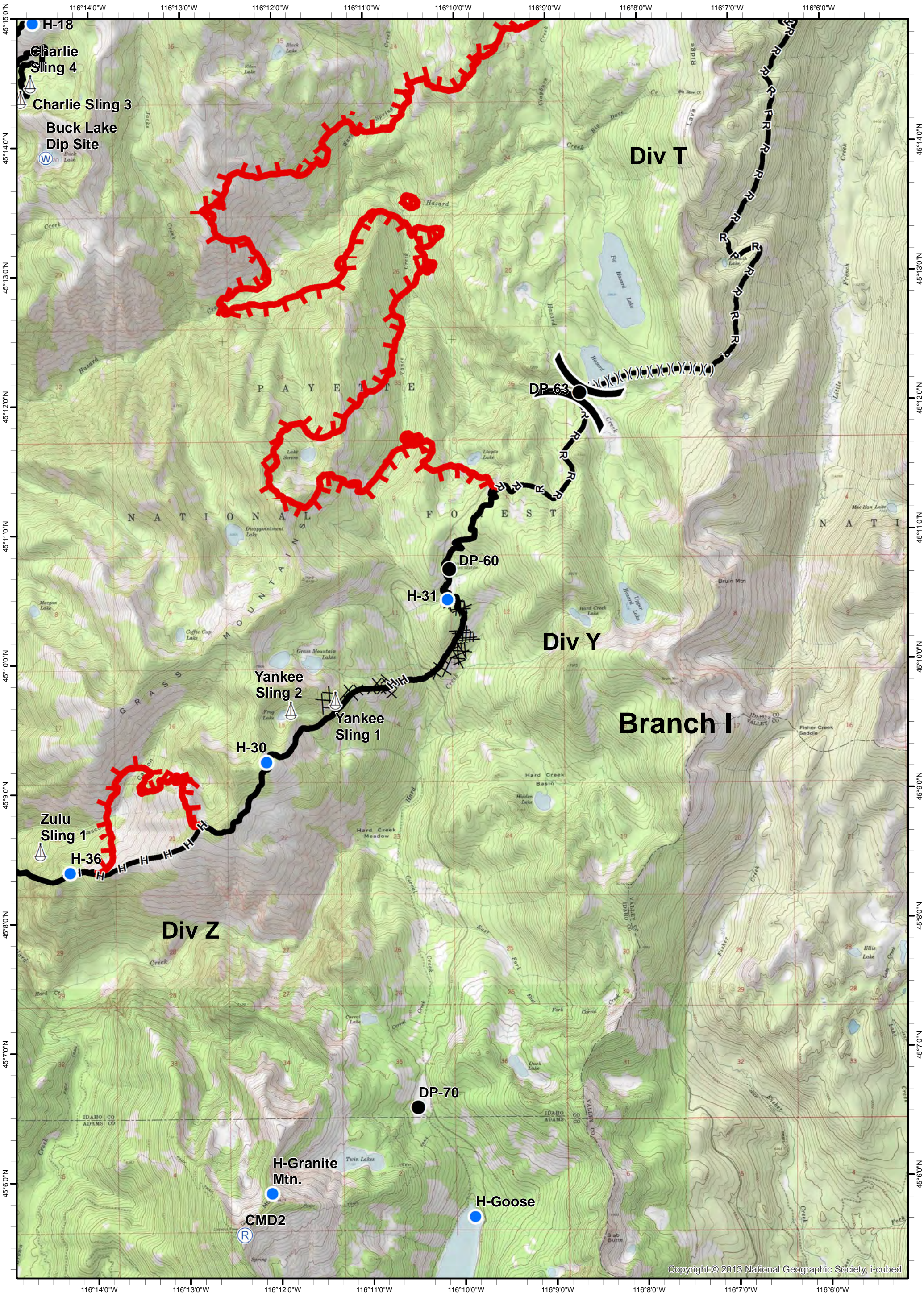
- ★ Cities/Towns
- () Division Breaks
- ⊙ Camp
- Drop Point
- 📏 Lookout
- 🚁 Helispot
- ⚓ Sling Site
- ▲ Ranch
- 🌊 Water Source
- 🌨 Mobile Weather Unit
- 🚧 Limited Access
- 🔴 Uncontrolled Fire Edge
- (X)(X)(X) Ridge / Geographic Feature
- ⊗ Proposed Dozer Line
- ▬ Completed Line
- ⊗ Completed Dozer Line
- H - H - Hand Line
- R - R - Road as Completed Line



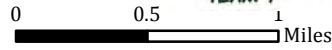
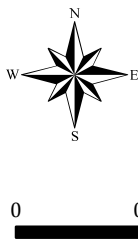
Tepee Springs Fire
IAP 2
ID-PAF-000192
9/13/2015
95,300 Acres



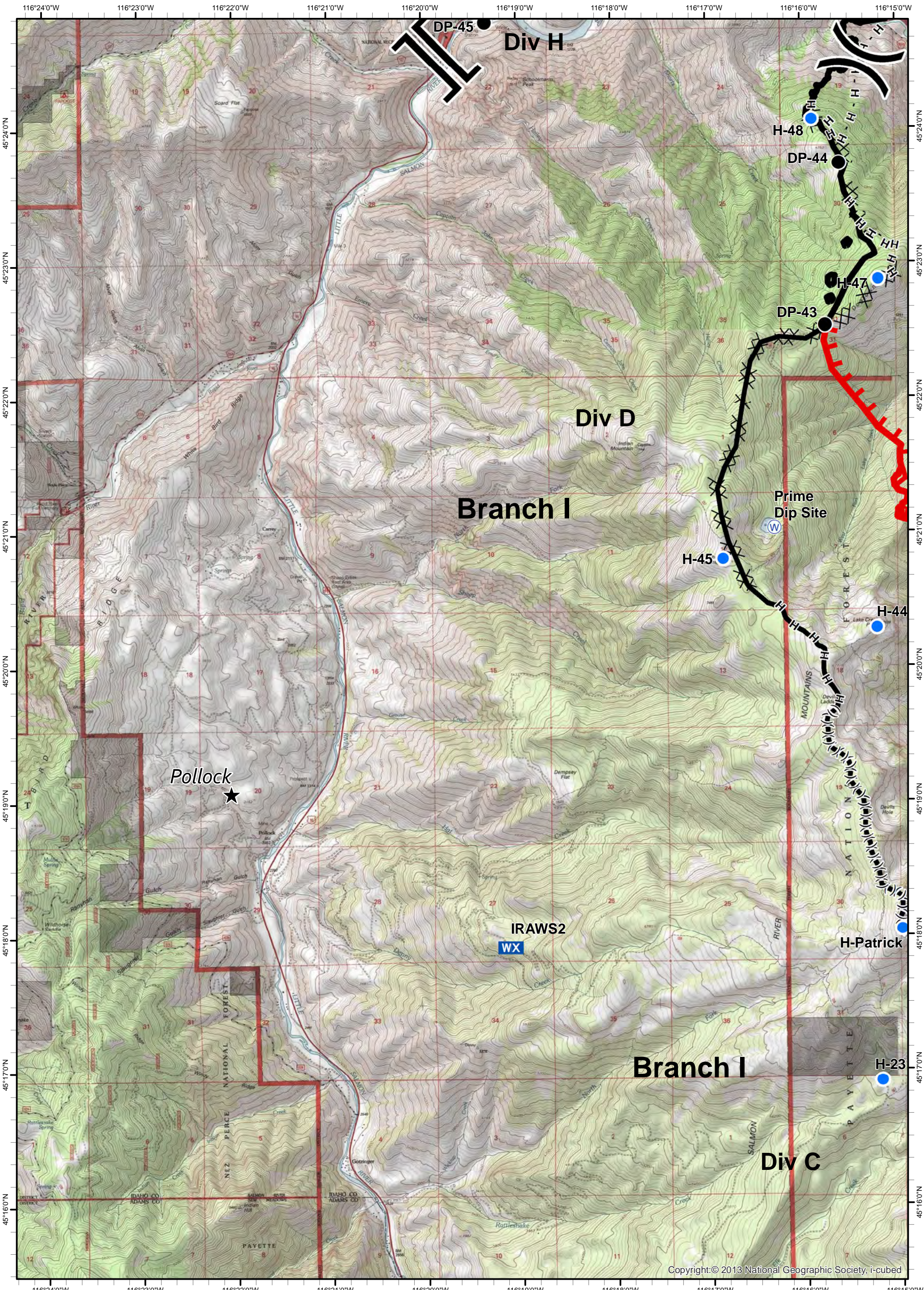
- ★ Cities/Towns
- () Division Breaks
- ⊙ Camp
- Drop Point
- ⚓ Lookout
- Helispot
- ⚓ Sling Site
- ▲ Ranch
- ⊙ Water Source
- WX Mobile Weather Unit
- ⊙ Limited Access
- Uncontrolled Fire Edge
- (X)(X)(X) Ridge / Geographic Feature
- Proposed Dozer Line
- Completed Line
- Completed Dozer Line
- H - H - Hand Line
- R - R - Road as Completed Line



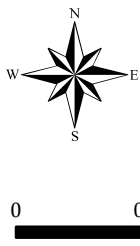
Tepee Springs Fire
IAP 3
ID-PAF-000192
9/13/2015
95,300 Acres



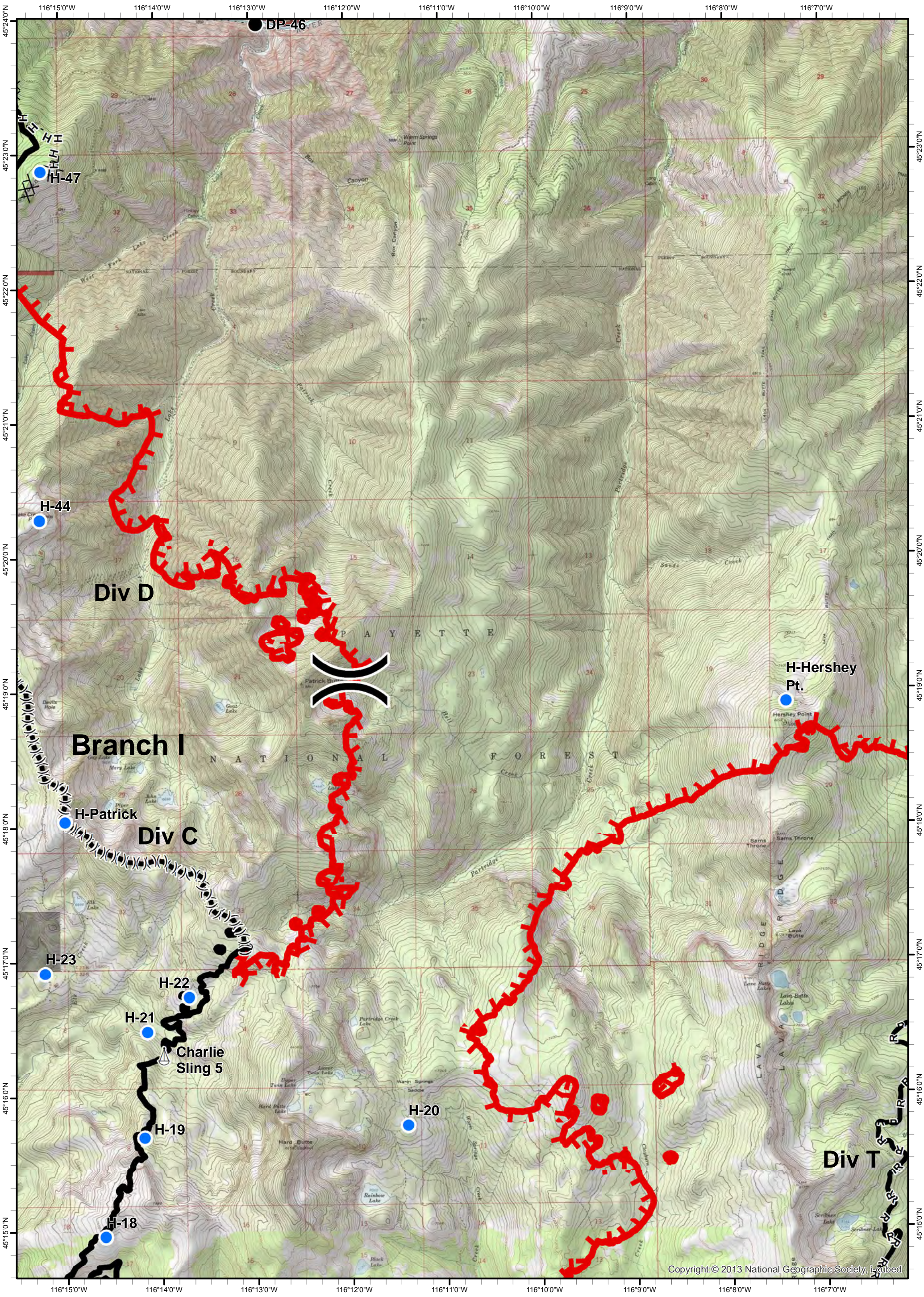
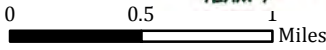
- ★ Cities/Towns
- () Division Breaks
- ⊙ Camp
- Drop Point
- ⬮ Lookout
- Helispot
- ⚓ Sling Site
- ▲ Ranch
- ⊙ Water Source
- WX Mobile Weather Unit
- ⊙ Limited Access
- Uncontrolled Fire Edge
- (X)(X)(X) Ridge / Geographic Feature
- ⊙ Proposed Dozer Line
- Completed Line
- ⊗ Completed Dozer Line
- H - H - Hand Line
- R - R - Road as Completed Line



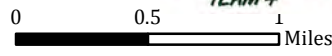
Tepee Springs Fire
 IAP 4
 ID-PAF-000192
 9/13/2015
 95,300 Acres



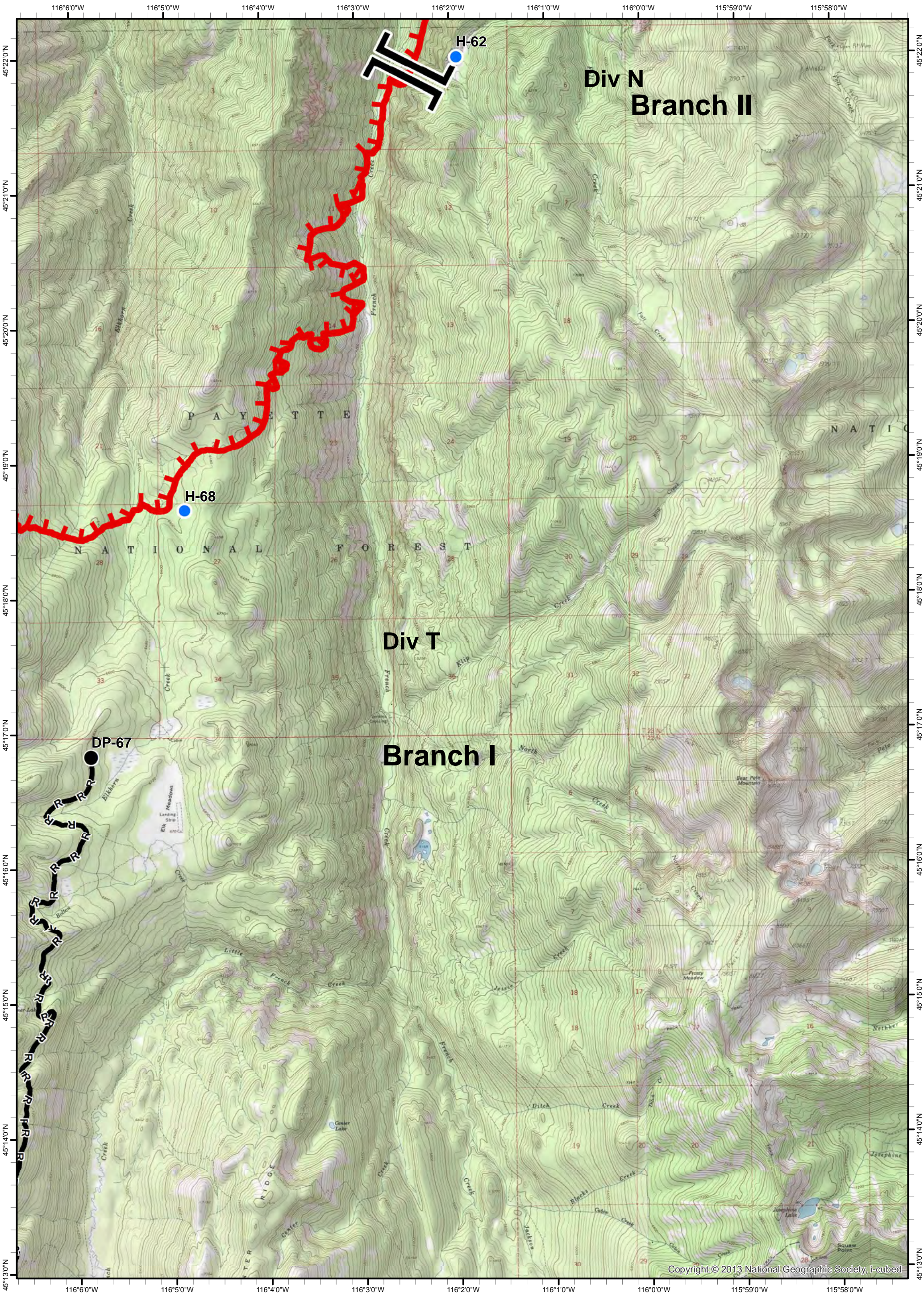
- ★ Cities/Towns
- () Division Breaks
- ⊙ Camp
- Drop Point
- 🚒 Lookout
- Helispot
- ⚙ Sling Site
- ▲ Ranch
- Ⓜ Water Source
- WX Mobile Weather Unit
- Ⓜ Limited Access
- 🔴 Uncontrolled Fire Edge
- (X)(X)(X) Ridge / Geographic Feature
- ⊗ Proposed Dozer Line
- ▬ Completed Line
- ⊗ Completed Dozer Line
- H - H - Hand Line
- R - R - Road as Completed Line



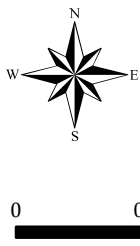
Tepee Springs Fire
 IAP 5
 ID-PAF-000192
 9/13/2015
 95,300 Acres



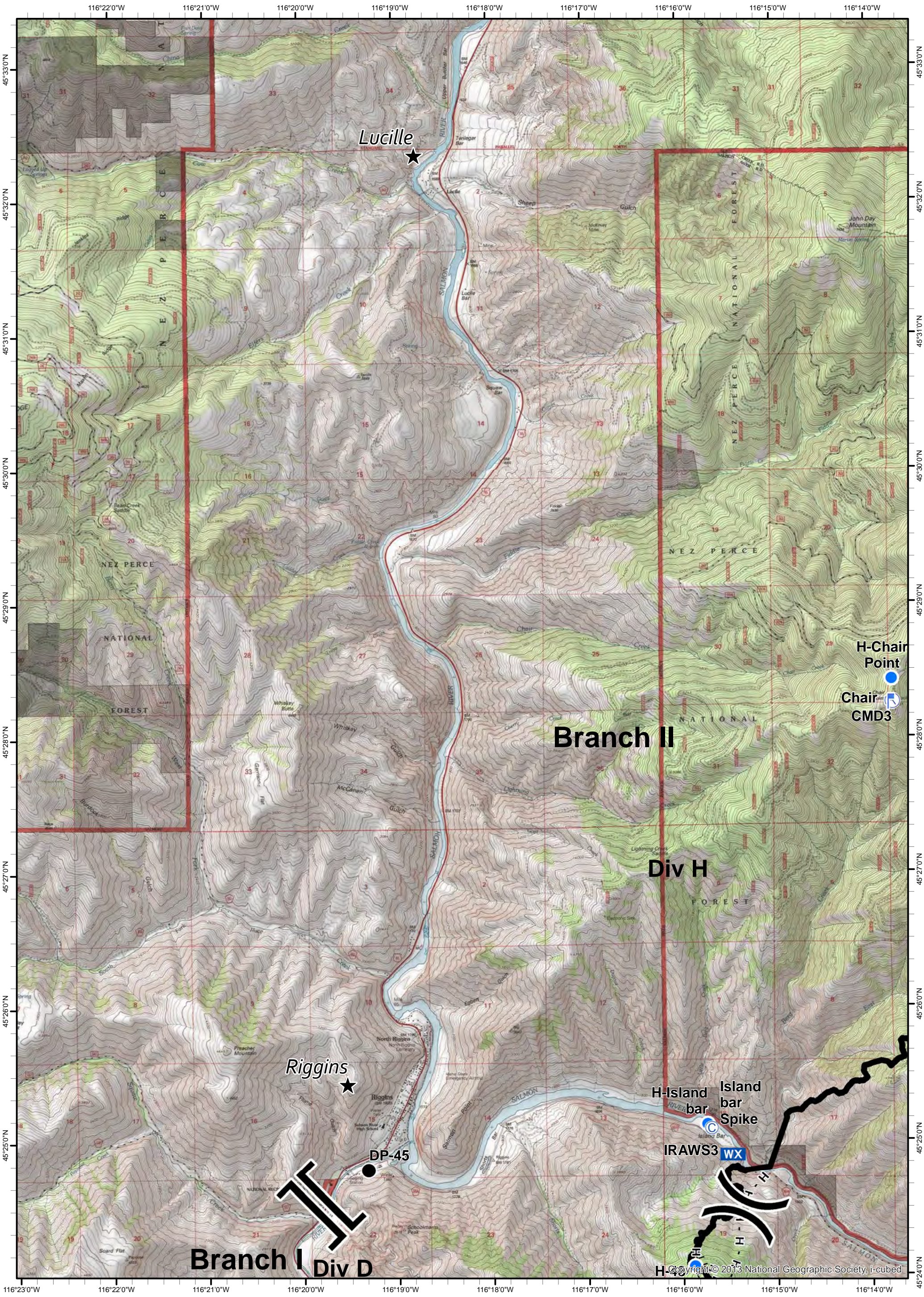
- ★ Cities/Towns
- () Division Breaks
- ⊙ Camp
- Drop Point
- ⬮ Lookout
- Helispot
- ⚓ Sling Site
- ▲ Ranch
- ⊕ Water Source
- WX Mobile Weather Unit
- ⊠ Limited Access
- ▬ Uncontrolled Fire Edge
- (X)(X)(X) Ridge / Geographic Feature
- ⊗ Proposed Dozer Line
- ▬ Completed Line
- ⊗ Completed Dozer Line
- H - H - Hand Line
- R - R - Road as Completed Line



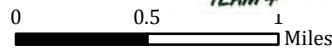
Tepee Springs Fire
 IAP 6
 ID-PAF-000192
 9/13/2015
 95,300 Acres



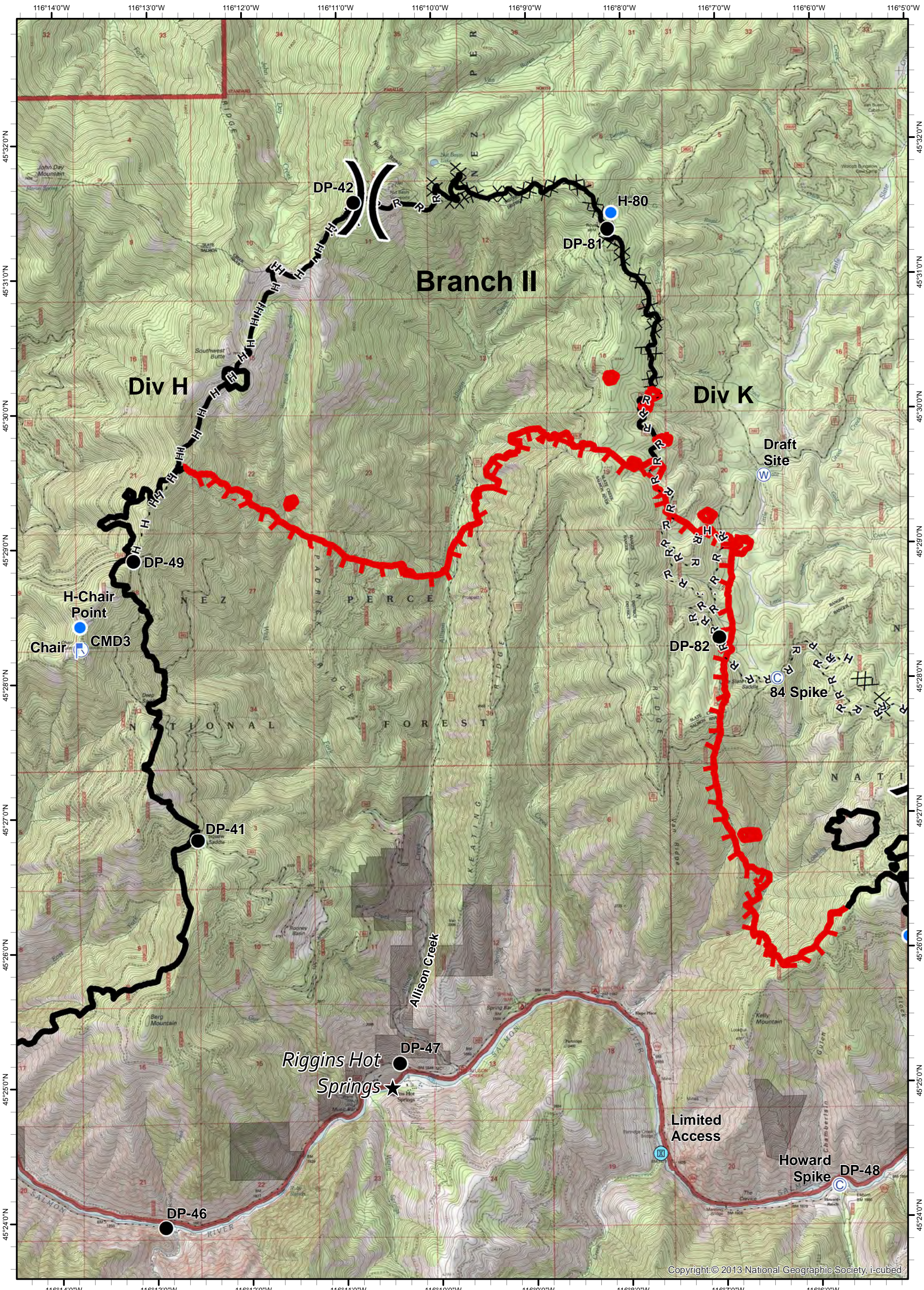
- ★ Cities/Towns
- () Division Breaks
- ⊙ Camp
- Drop Point
- 🚒 Lookout
- 🚁 Helispot
- ⚓ Sling Site
- ▲ Ranch
- 🌊 Water Source
- WX Mobile Weather Unit
- Ⓜ Limited Access
- 🔴 Uncontrolled Fire Edge
- (X)(X)(X) Ridge / Geographic Feature
- ⊗ Proposed Dozer Line
- ▬ Completed Line
- ⊗⊗ Completed Dozer Line
- H - H - Hand Line
- R - R - Road as Completed Line



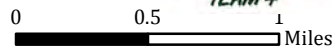
Tepee Springs Fire
IAP 7
ID-PAF-000192
9/13/2015
95,300 Acres



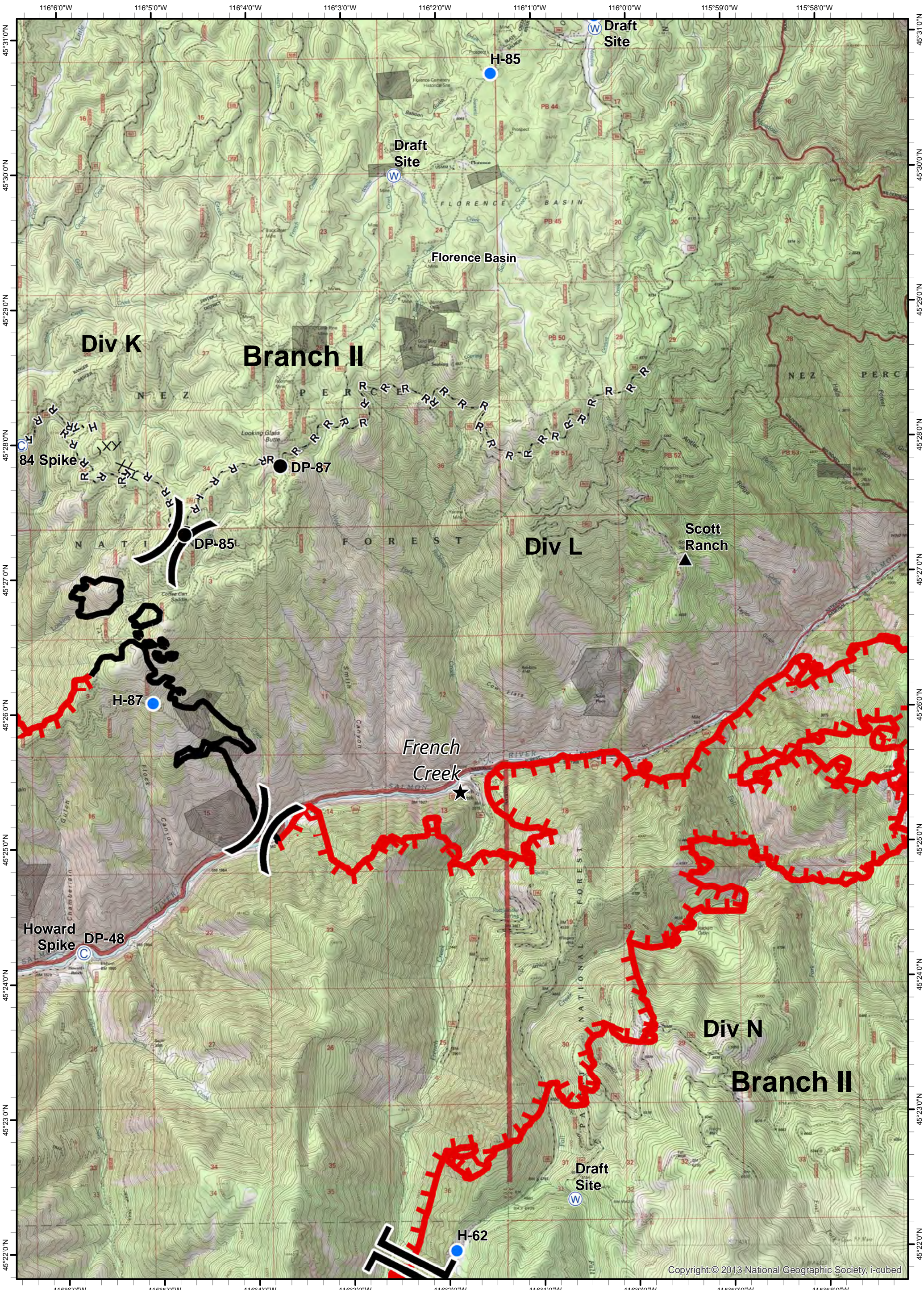
- ★ Cities/Towns
- () Division Breaks
- ⊙ Camp
- Drop Point
- ⚠ Lookout
- Helispot
- ⚓ Sling Site
- ▲ Ranch
- ⊙ Water Source
- WX Mobile Weather Unit
- ⊙ Limited Access
- Uncontrolled Fire Edge
- (X)(X)(X) Ridge / Geographic Feature
- ⊙ Proposed Dozer Line
- Completed Line
- ⊗ Completed Dozer Line
- H - H - Hand Line
- R - R - Road as Completed Line



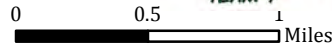
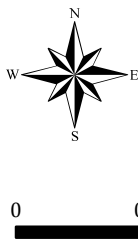
Tepee Springs Fire
 IAP 8
 ID-PAF-000192
 9/13/2015
 95,300 Acres



- ★ Cities/Towns
- () Division Breaks
- ⊙ Camp
- Drop Point
- ⚡ Lookout
- Helispot
- ⚓ Sling Site
- ▲ Ranch
- ⊙ Water Source
- WX Mobile Weather Unit
- ⊙ Limited Access
- Uncontrolled Fire Edge
- (X)(X) Ridge / Geographic Feature
- Proposed Dozer Line
- Completed Line
- Completed Dozer Line
- H - H - Hand Line
- R - R - Road as Completed Line



Tepee Springs Fire
IAP 9
ID-PAF-000192
9/13/2015
95,300 Acres



- ★ Cities/Towns
- () Division Breaks
- ⊙ Camp
- Drop Point
- 🚒 Lookout
- 🌀 Helispot
- ⚓ Sling Site
- ▲ Ranch
- 🌊 Water Source
- WX Mobile Weather Unit
- Ⓜ Limited Access
- 🔴 Uncontrolled Fire Edge
- (X)(X)(X) Ridge / Geographic Feature
- ⊗ Proposed Dozer Line
- ▬ Completed Line
- ⊗⊗ Completed Dozer Line
- H - H - Hand Line
- R - R - Road as Completed Line

