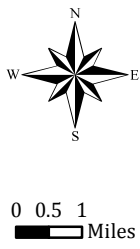
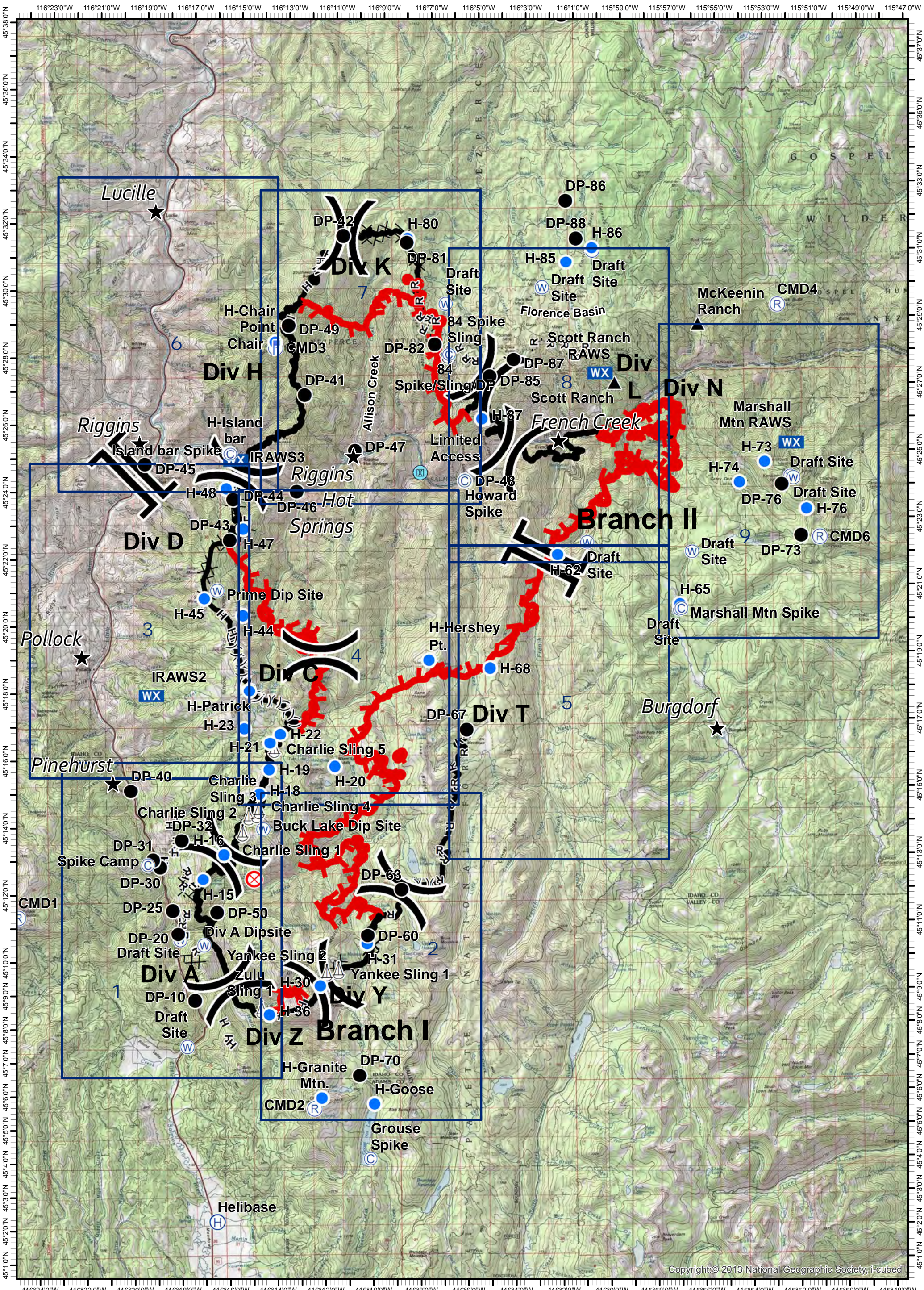


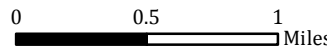
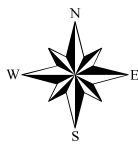
Tepee Springs Fire
 IAP Overview Map
 ID-PAF-000192
 9/15/2015
 95,709 Acres



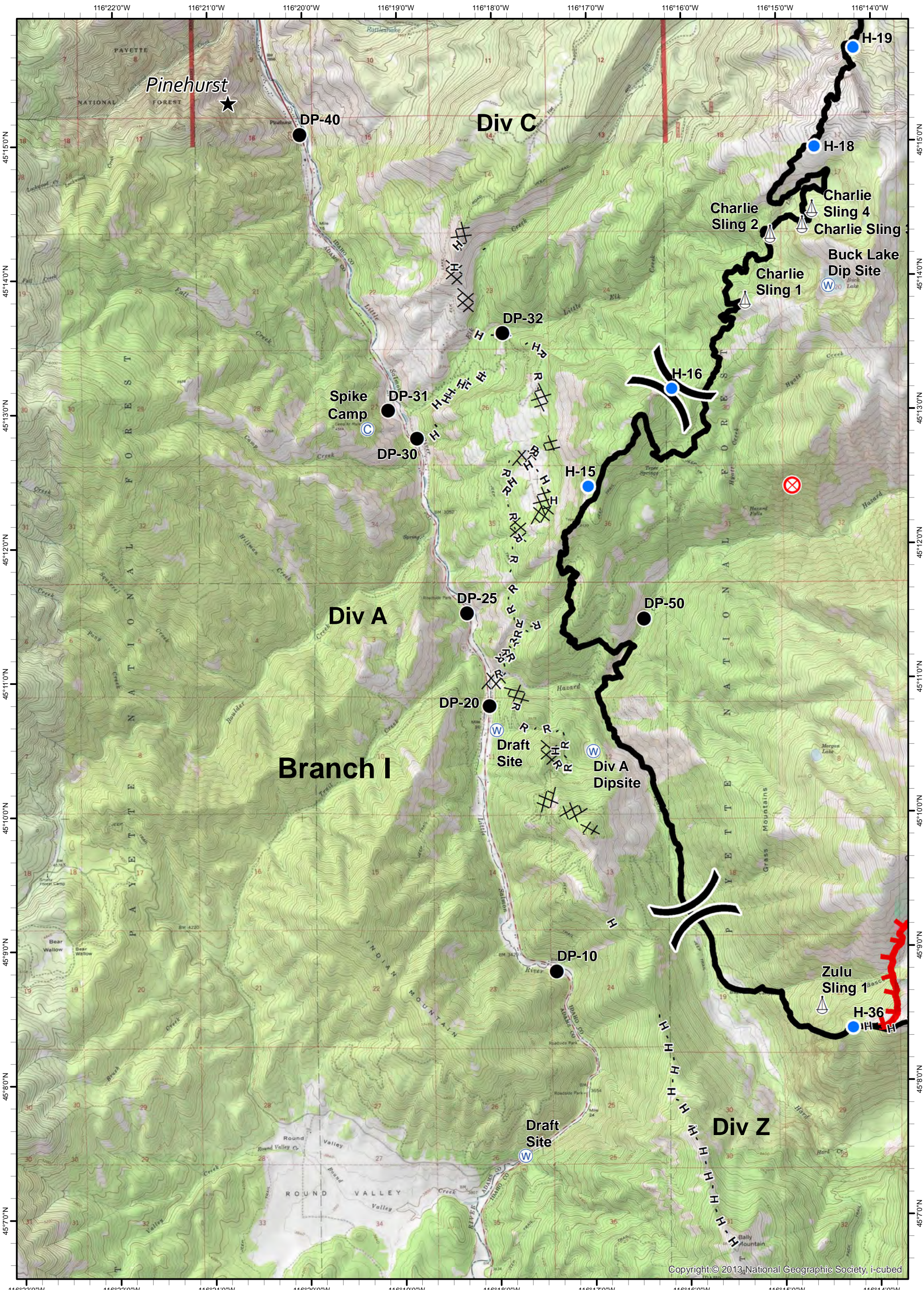
- ★ Cities/Towns
- () Division Breaks
- ⊙ Camp
- Drop Point
- ⚡ Lookout
- ⚓ Helispot
- ⚓ Sling Site
- ▲ Ranch
- ⊙ Water Source
- WX Mobile Weather Unit
- ⊙ Limited Access
- Uncontrolled Fire Edge
- (X)(X) Ridge / Geographic Feature
- Proposed Dozer Line
- Completed Line
- Completed Dozer Line
- H - H - Hand Line
- R - R - Road as Completed Line



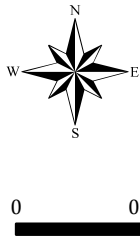
Tepee Springs Fire
 IAP 1
 ID-PAF-000192
 9/15/2015
 95,709 Acres



- ★ Cities/Towns
- () Division Breaks
- ⊙ Camp
- Drop Point
- 📏 Lookout
- 🚁 Helispot
- ⚙️ Sling Site
- 🏠 Ranch
- 🌊 Water Source
- 📶 Mobile Weather Unit
- 🚧 Limited Access
- 🔴 Uncontrolled Fire Edge
- (X)(X) Ridge / Geographic Feature
- ⊗ Proposed Dozer Line
- 🛣️ Completed Line
- ⊗⊗ Completed Dozer Line
- H - H - Hand Line
- R - R - Road as Completed Line



Tepee Springs Fire
IAP 2
ID-PAF-000192
9/15/2015
95,709 Acres



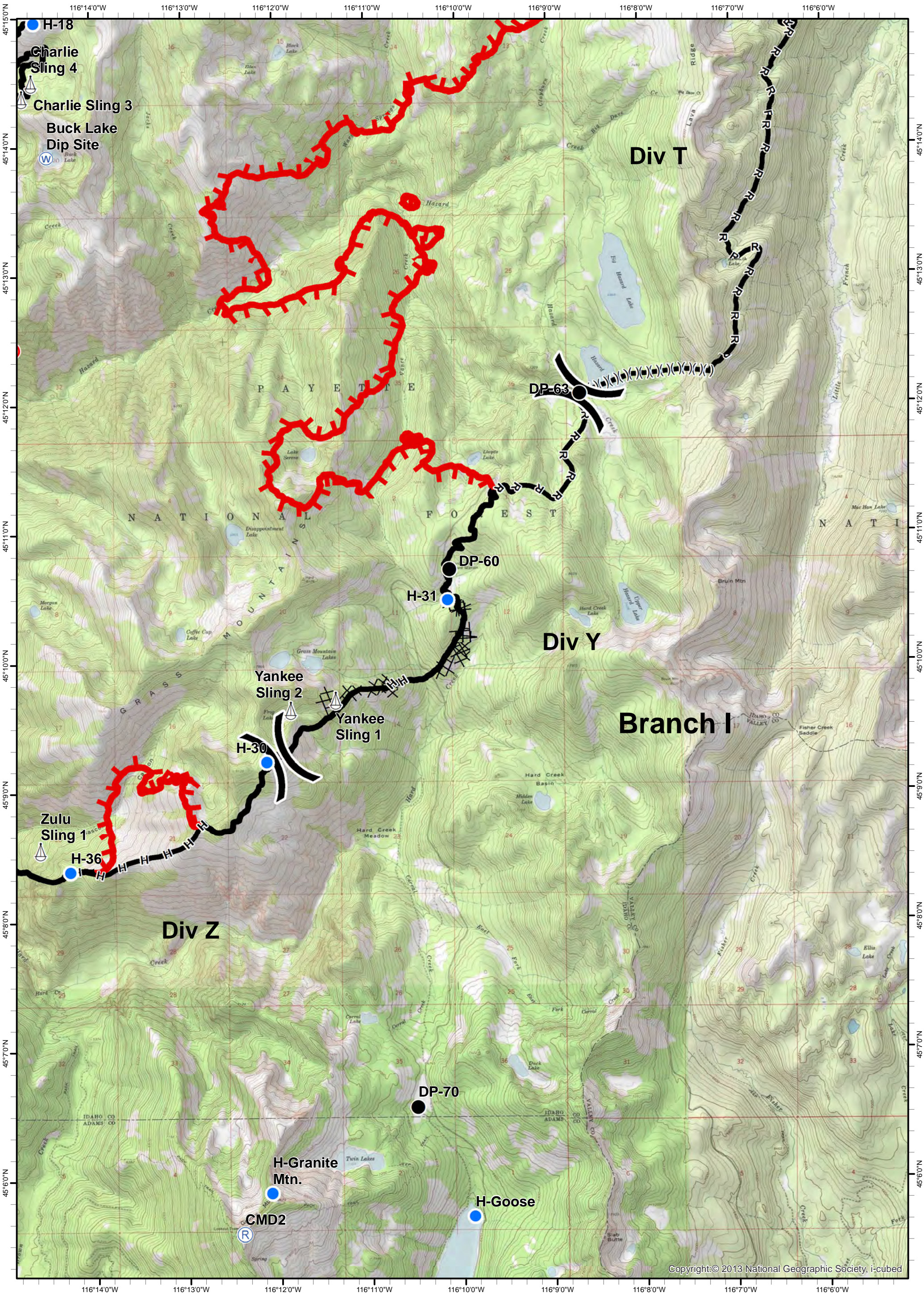
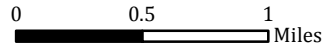
- ★ Cities/Towns
- () Division Breaks
- ⊙ Camp
- Drop Point

- 🚒 Lookout
- Helispot
- ⚓ Sling Site
- ▲ Ranch

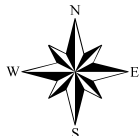
- 🌊 Water Source
- WX Mobile Weather Unit
- Ⓜ Limited Access

- 🔥 Uncontrolled Fire Edge
- (X)(X)(X) Ridge / Geographic Feature
- ⊗ Proposed Dozer Line
- Completed Line

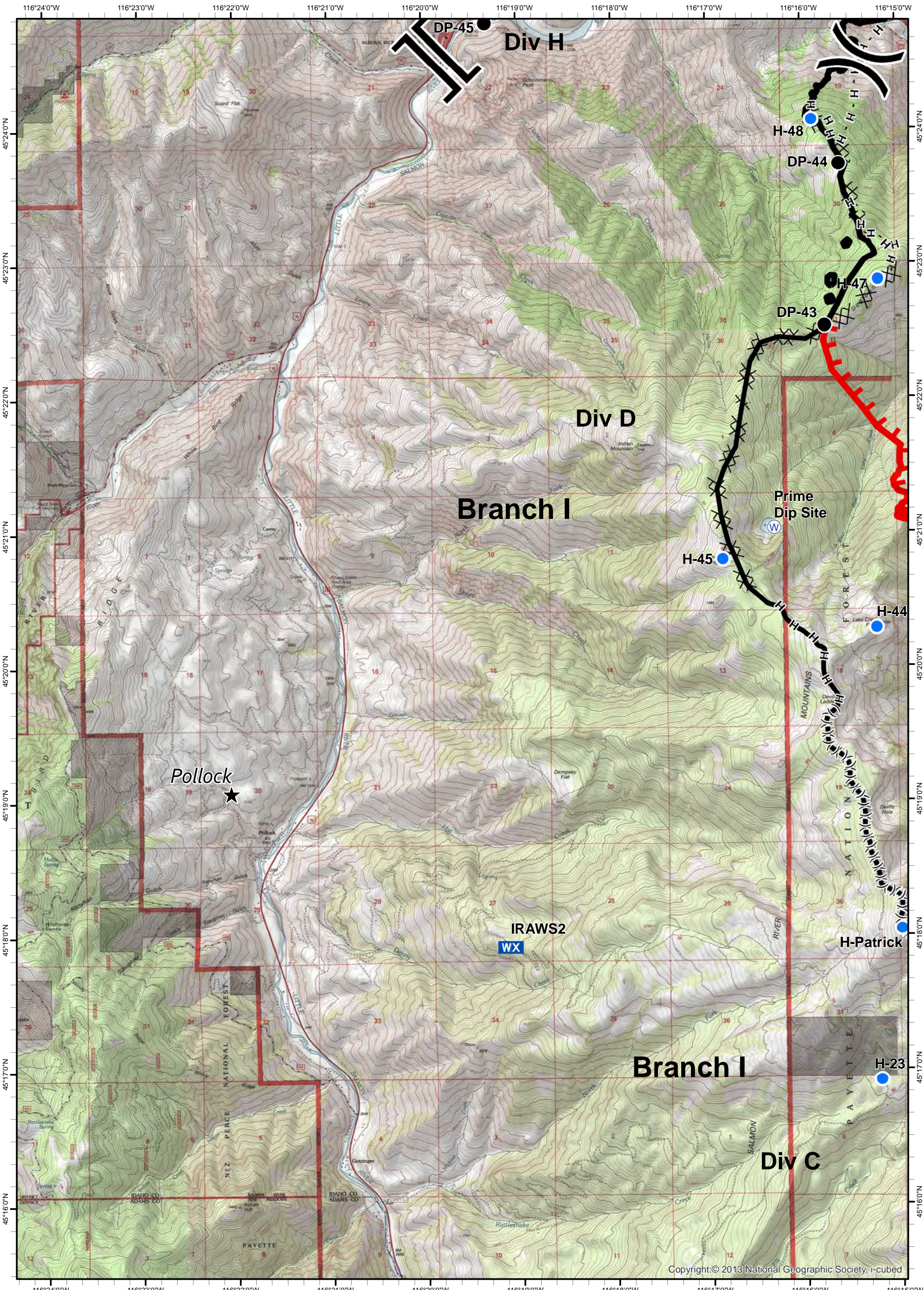
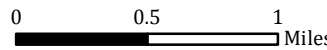
- ⊗ Completed Dozer Line
- H - H - Hand Line
- R - R - Road as Completed Line



Tepee Springs Fire
 IAP 3
 ID-PAF-000192
 9/15/2015
 95,709 Acres



- ★ Cities/Towns
- () Division Breaks
- ⊙ Camp
- Drop Point
- ⚡ Lookout
- Helispot
- ⚓ Sling Site
- ▲ Ranch
- ⊙ Water Source
- WX Mobile Weather Unit
- ⊠ Limited Access
- ▬ Uncontrolled Fire Edge
- ()() Ridge / Geographic Feature
- ⊗ Proposed Dozer Line
- ▬ Completed Line
- ⊗ Completed Dozer Line
- H - H - Hand Line
- R - R - Road as Completed Line



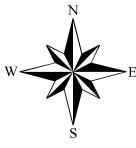
Tepee Springs Fire

IAP 4

ID-PAF-000192

9/15/2015

95,709 Acres



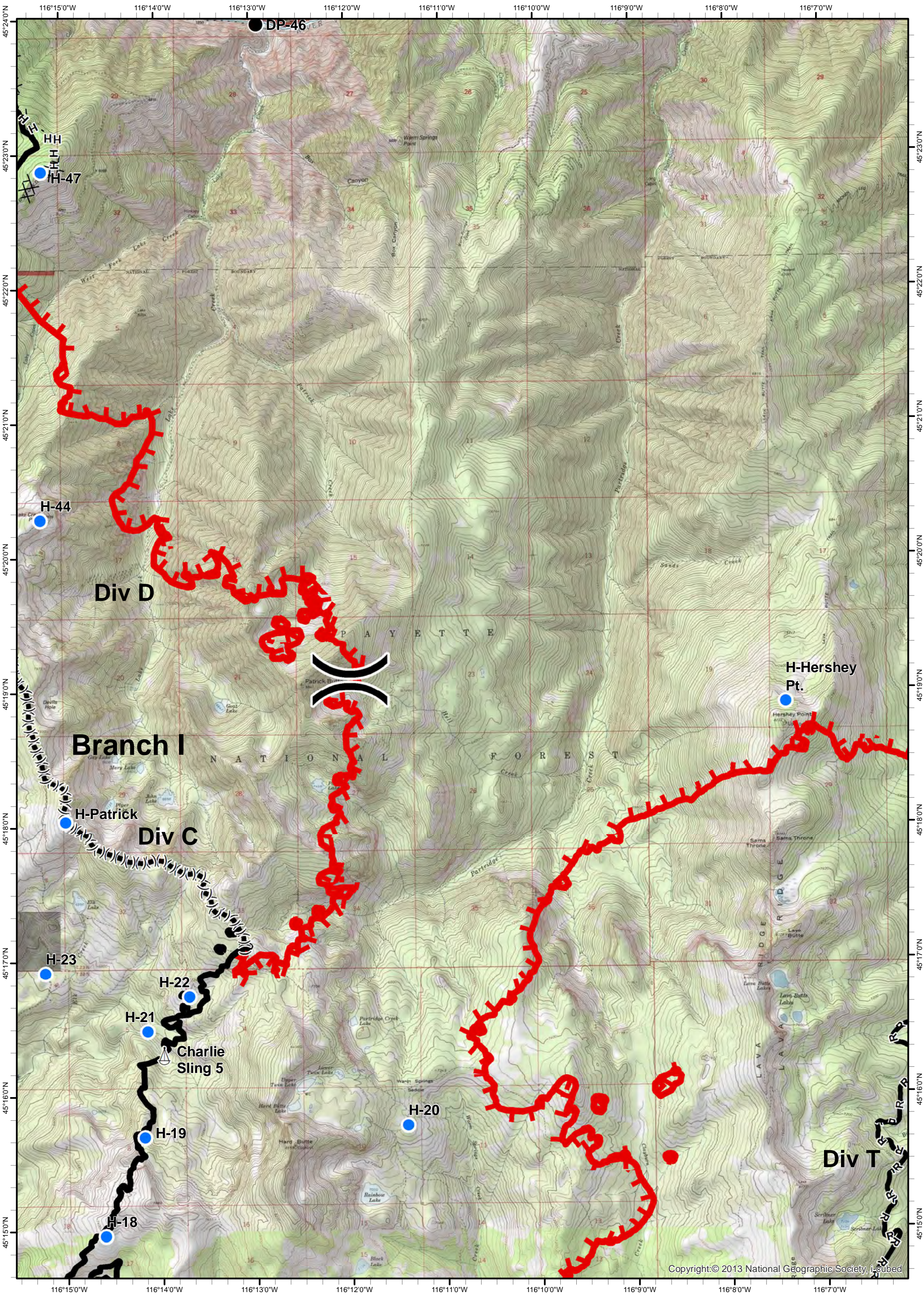
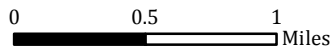
- ★ Cities/Towns
- () Division Breaks
- ⊙ Camp
- Drop Point

- 📏 Lookout
- Helispot
- ⚙ Sling Site
- ▲ Ranch

- Ⓜ Water Source
- WX Mobile Weather Unit
- Ⓜ Limited Access

- 🔴 Uncontrolled Fire Edge
- ()() Ridge / Geographic Feature
- ⊗ Proposed Dozer Line
- ▬ Completed Line

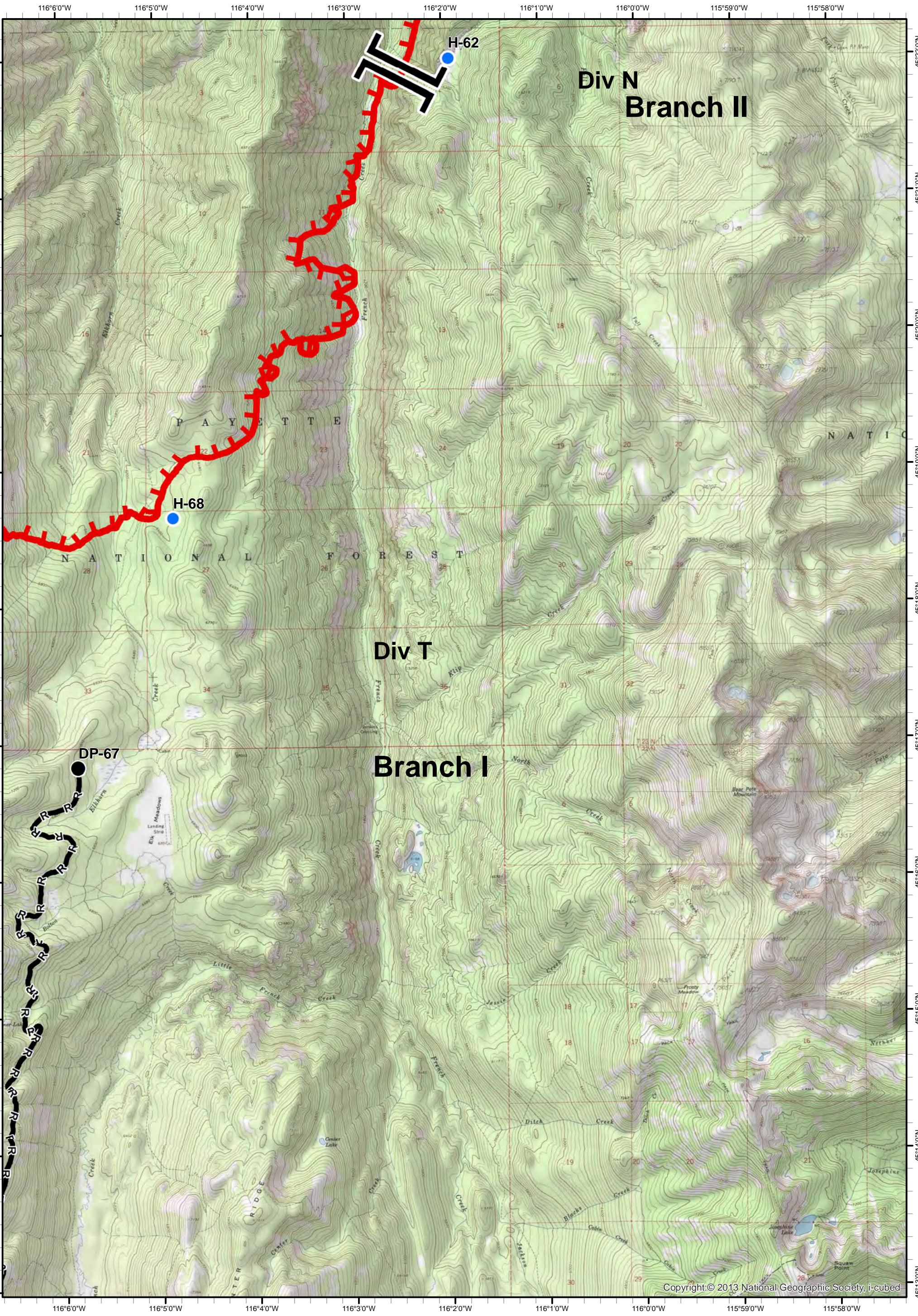
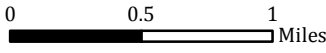
- ⊗ Completed Dozer Line
- H - H - Hand Line
- R - R - Road as Completed Line



Tepee Springs Fire
 IAP 5
 ID-PAF-000192
 9/15/2015
 95,709 Acres



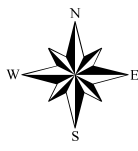
- ★ Cities/Towns
- () Division Breaks
- ⊙ Camp
- Drop Point
- ⚡ Lookout
- Helispot
- ⚓ Sling Site
- ▲ Ranch
- ⊙ Water Source
- WX Mobile Weather Unit
- ⊙ Limited Access
- Uncontrolled Fire Edge
- (X)(X) Ridge / Geographic Feature
- Proposed Dozer Line
- Completed Line
- Completed Dozer Line
- H - H - Hand Line
- R - R - Road as Completed Line



Div N
 Branch II

Div T
 Branch I

Tepee Springs Fire
IAP 6
ID-PAF-000192
9/15/2015
95,709 Acres



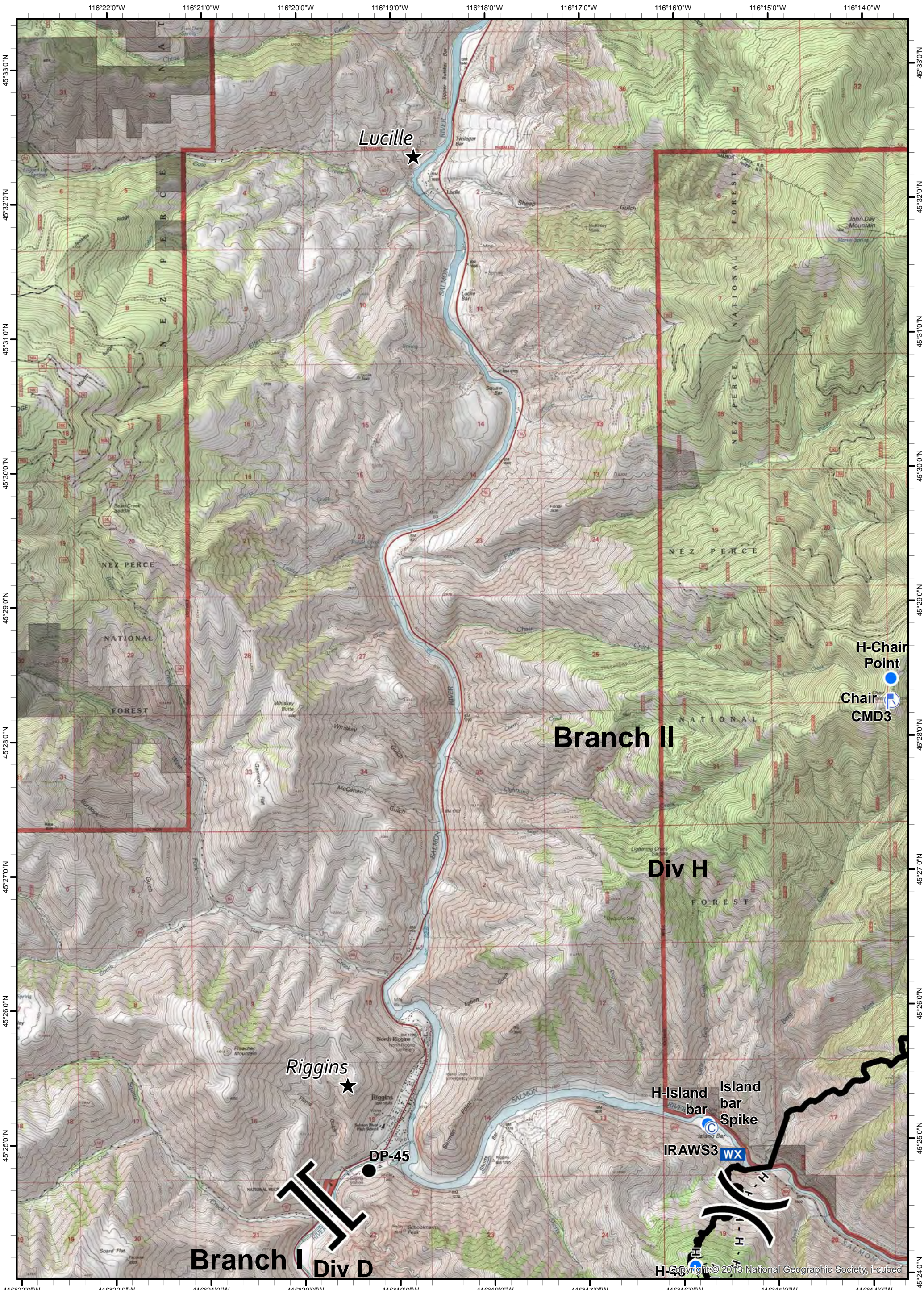
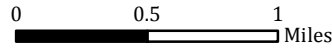
- ★ Cities/Towns
- () Division Breaks
- ⊙ Camp
- Drop Point

- 📡 Lookout
- 🚁 Helispot
- ⚓ Sling Site
- ▲ Ranch

- 🌊 Water Source
- 📶 Mobile Weather Unit
- 🚧 Limited Access

- 🔥 Uncontrolled Fire Edge
- (X)(X) Ridge / Geographic Feature
- ⚙️ Proposed Dozer Line
- Completed Line

- ⊗ Completed Dozer Line
- H - H - Hand Line
- R - R - Road as Completed Line



H-Chain Point
 Chair CMD3

Branch II

Div H

Riggins

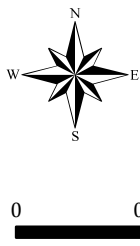
DP-45

Branch I **Div D**

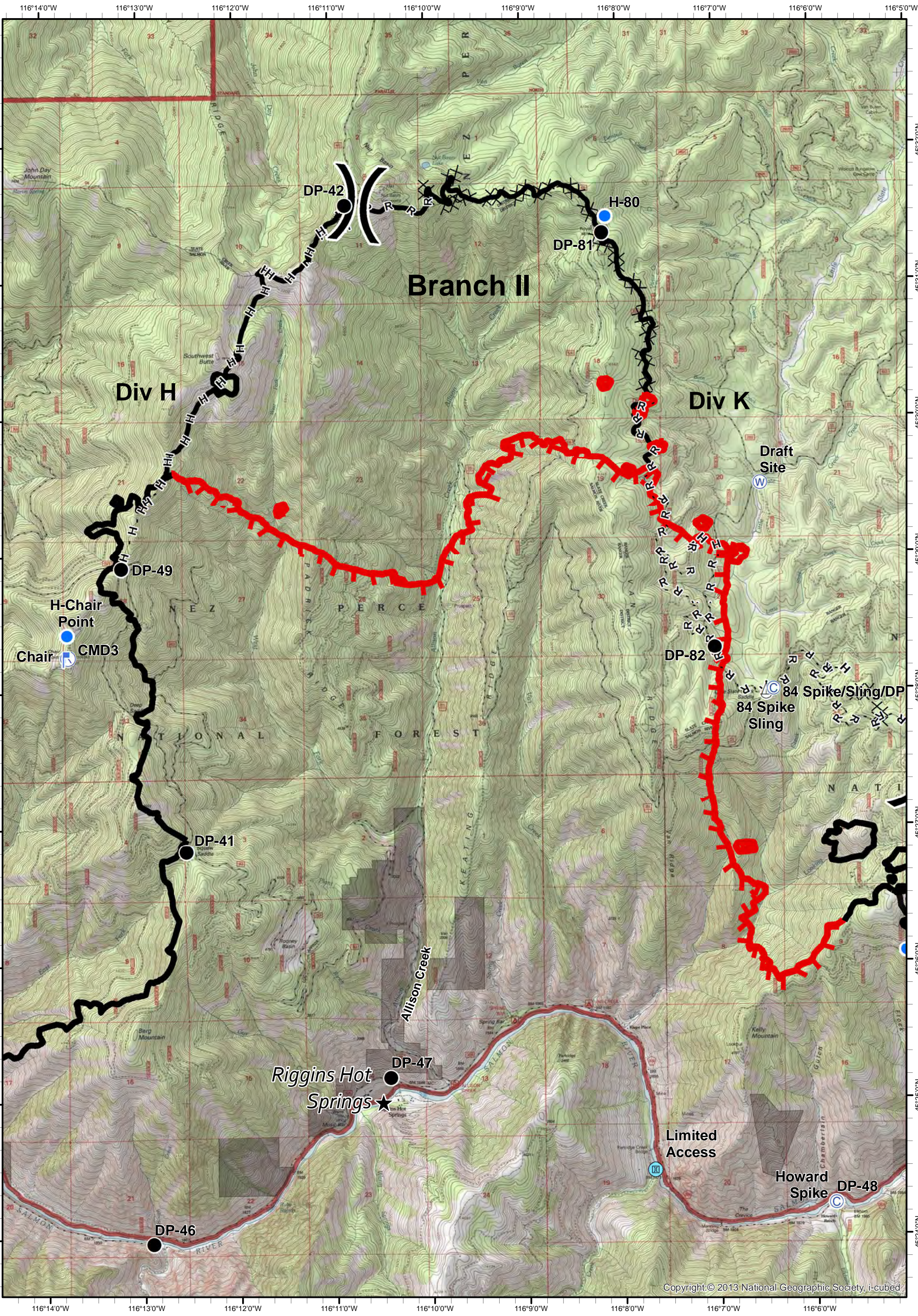
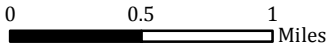
H-Island bar
 Island bar Spike

IRAWS3 WX

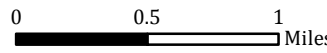
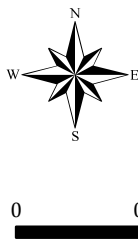
Tepee Springs Fire
IAP 7
ID-PAF-000192
9/15/2015
95,709 Acres



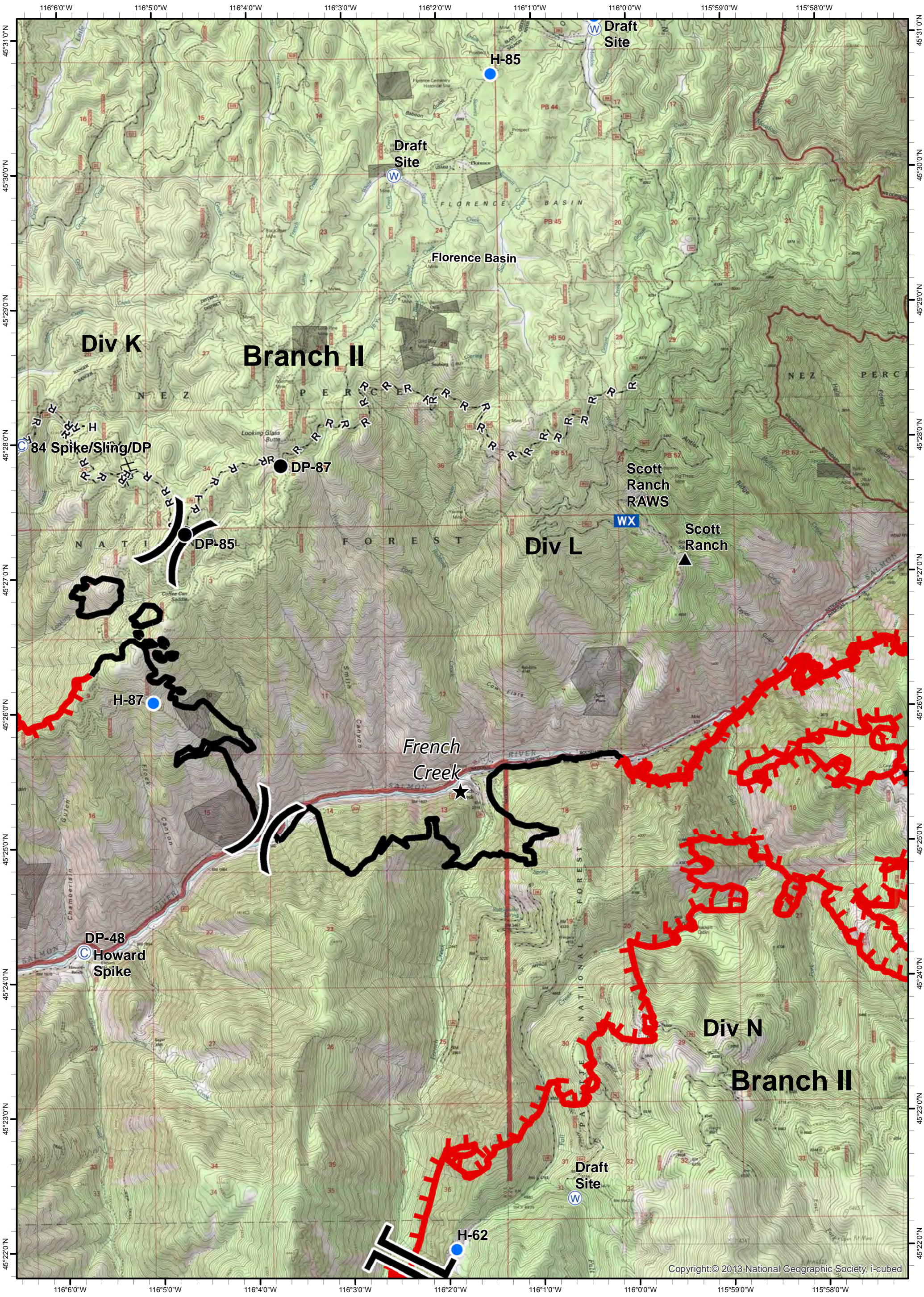
- ★ Cities/Towns
- () Division Breaks
- ⊙ Camp
- Drop Point
- ⚠ Lookout
- Helispot
- ⚓ Sling Site
- ▲ Ranch
- Ⓜ Water Source
- WX Mobile Weather Unit
- Ⓜ Limited Access
- Uncontrolled Fire Edge
- ()() Ridge / Geographic Feature
- ⊗ Proposed Dozer Line
- Completed Line
- ⊗ ⊗ Completed Dozer Line
- H - H - Hand Line
- R - R - Road as Completed Line



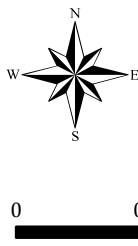
Tepee Springs Fire
IAP 8
ID-PAF-000192
9/15/2015
95,709 Acres



- ★ Cities/Towns
- () Division Breaks
- ⊙ Camp
- Drop Point
- ⚡ Lookout
- Helispot
- ⚓ Sling Site
- ▲ Ranch
- ⊙ Water Source
- WX Mobile Weather Unit
- ⊙ Limited Access
- Uncontrolled Fire Edge
- (X)(X)(X) Ridge / Geographic Feature
- Proposed Dozer Line
- Completed Line
- Completed Dozer Line
- H - H - Hand Line
- R - R - Road as Completed Line



Tepee Springs Fire
IAP 9
ID-PAF-000192
9/15/2015
95,709 Acres



- ★ Cities/Towns
- () Division Breaks
- ⊙ Camp
- Drop Point
- 🚒 Lookout
- 📍 Helispot
- 🚢 Sling Site
- 🏠 Ranch
- 🌊 Water Source
- 📶 Mobile Weather Unit
- 🚧 Limited Access
- 🔴 Uncontrolled Fire Edge
- (X)(X)(X) Ridge / Geographic Feature
- ⊗ Proposed Dozer Line
- ▬ Completed Line
- ⊗⊗ Completed Dozer Line
- H - H - Hand Line
- R - R - Road as Completed Line

