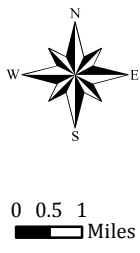
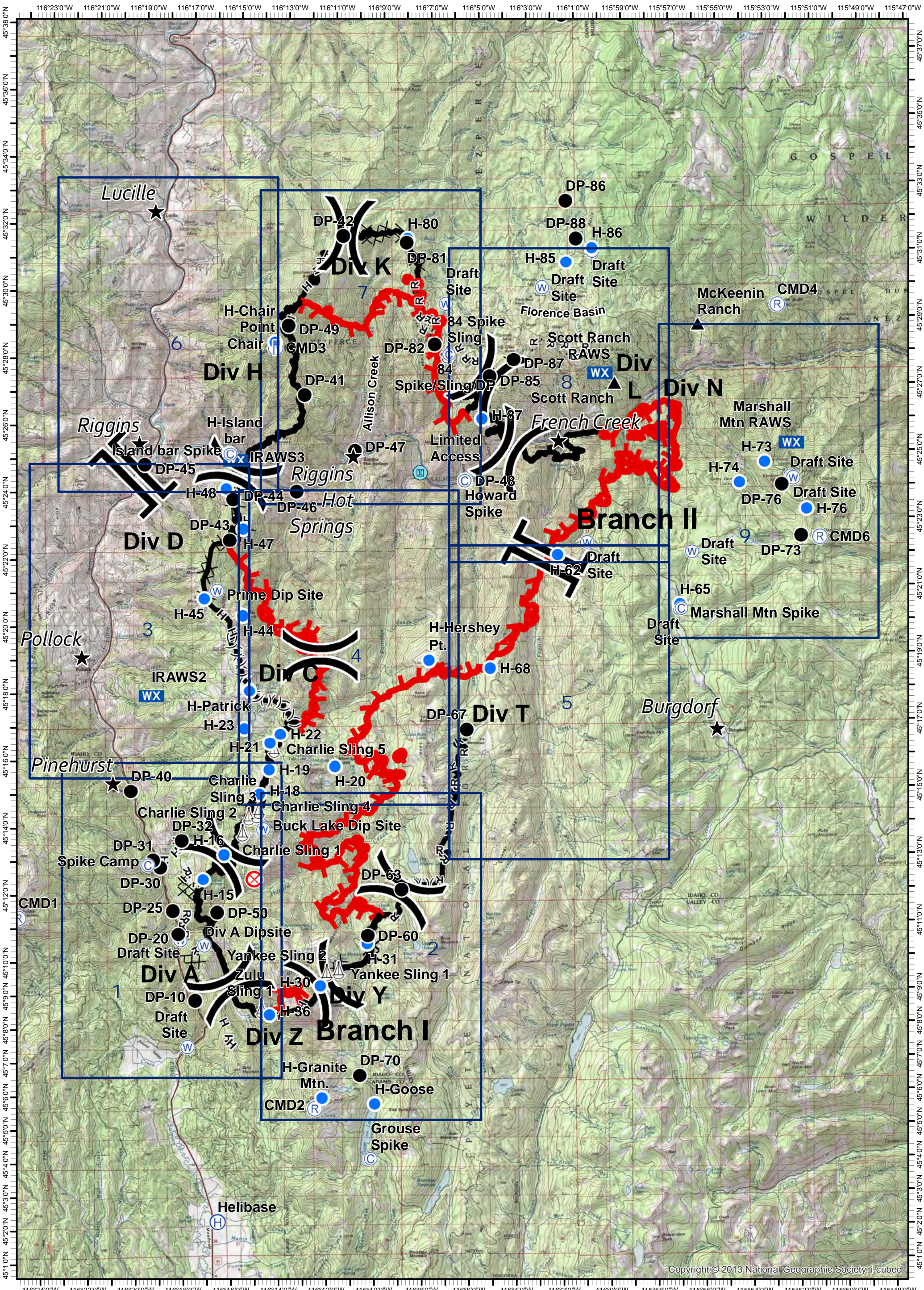


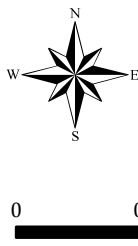
Tepee Springs Fire
 IAP Overview Map
 ID-PAF-000192
 9/16/2015
 95,709 Acres



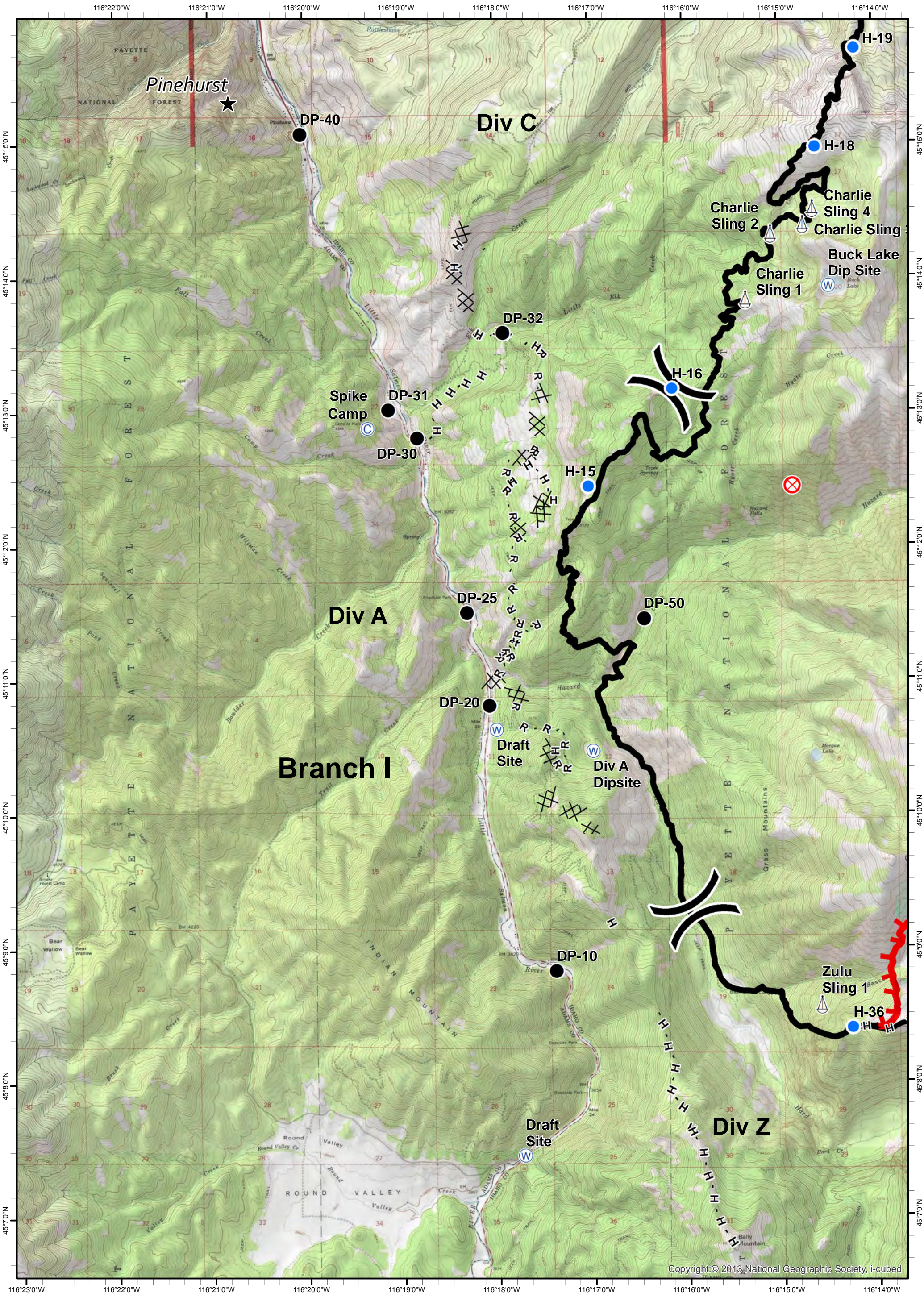
- ★ Cities/Towns
- () Division Breaks
- ⊙ Camp
- Drop Point
- ⚡ Lookout
- Helispot
- ⚓ Sling Site
- ▲ Ranch
- Ⓜ Water Source
- WX Mobile Weather Unit
- Ⓜ Limited Access
- Uncontrolled Fire Edge
- () () () Ridge / Geographic Feature
- ⊗ Proposed Dozer Line
- Completed Line
- ⊗ ⊗ Completed Dozer Line
- H - H - Hand Line
- R - R - Road as Completed Line



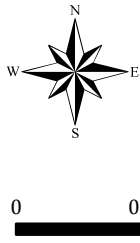
Tepee Springs Fire
 IAP 1
 ID-PAF-000192
 9/16/2015
 95,709 Acres



- ★ Cities/Towns
- () Division Breaks
- ⊙ Camp
- Drop Point
- ⚡ Lookout
- Helispot
- ⚓ Sling Site
- ▲ Ranch
- ⊙ Water Source
- WX Mobile Weather Unit
- ⊙ Limited Access
- Uncontrolled Fire Edge
- () () () Ridge / Geographic Feature
- ⊙ Proposed Dozer Line
- Completed Line
- Completed Dozer Line
- H - H - Hand Line
- R - R - Road as Completed Line



Tepee Springs Fire
IAP 2
ID-PAF-000192
9/16/2015
95,709 Acres



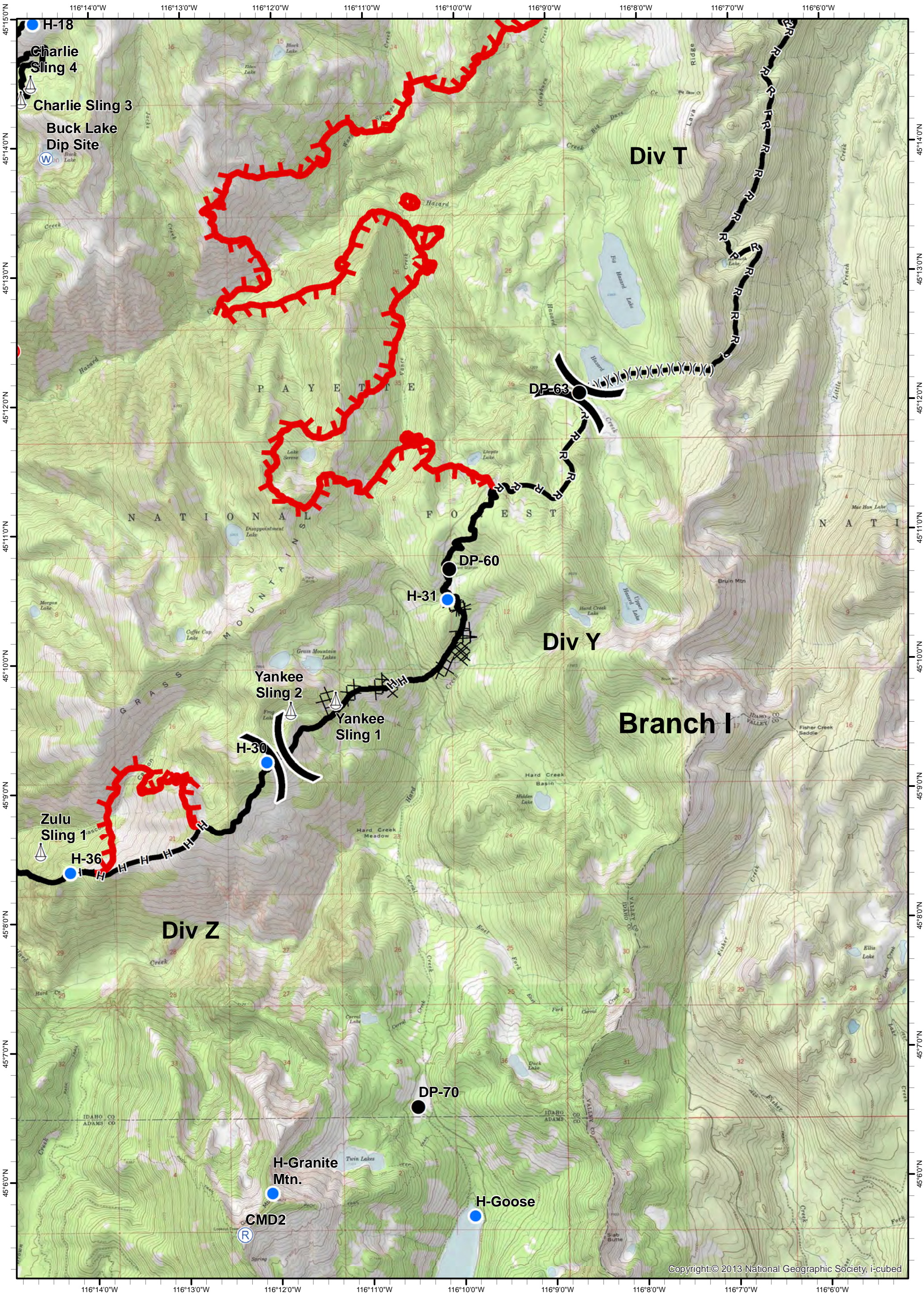
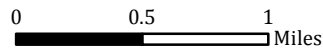
- ★ Cities/Towns
- () Division Breaks
- ⊙ Camp
- Drop Point

- 📏 Lookout
- 📍 Helispot
- 🚢 Sling Site
- 🏠 Ranch

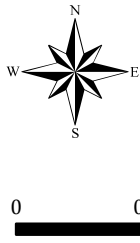
- 🌊 Water Source
- WX Mobile Weather Unit
- 🚫 Limited Access

- 🔴 Uncontrolled Fire Edge
- () Ridge / Geographic Feature
- ⊗ Proposed Dozer Line
- ▬ Completed Line

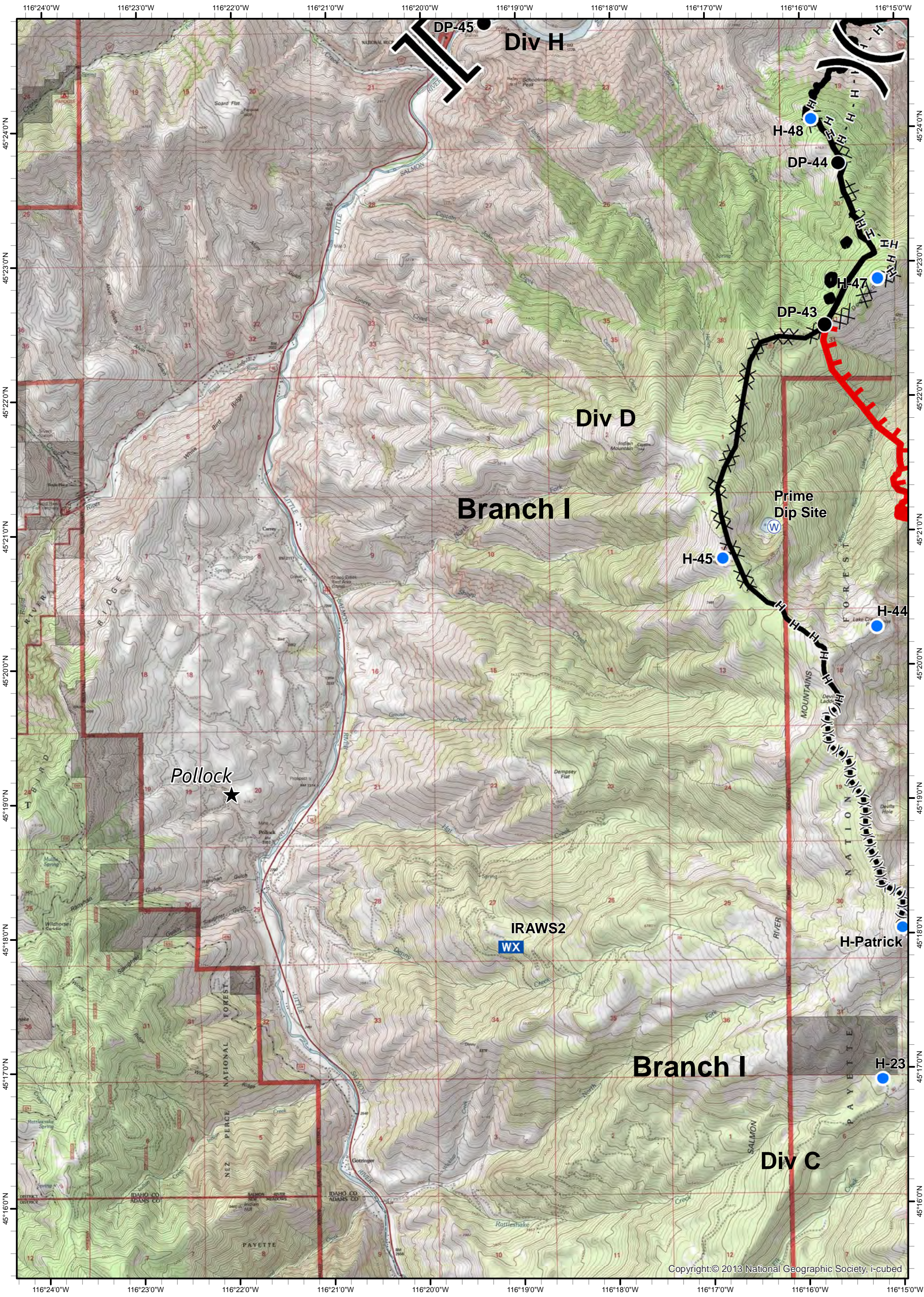
- ⊗ Completed Dozer Line
- H - H - Hand Line
- R - R - Road as Completed Line



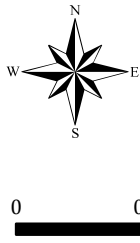
Tepee Springs Fire
 IAP 3
 ID-PAF-000192
 9/16/2015
 95,709 Acres



- ★ Cities/Towns
- () Division Breaks
- ⊙ Camp
- Drop Point
- 📏 Lookout
- Helispot
- ⚙ Sling Site
- ▲ Ranch
- ⊙ Water Source
- WX Mobile Weather Unit
- ⊙ Limited Access
- 🔴 Uncontrolled Fire Edge
- () () () Ridge / Geographic Feature
- ⊙ Proposed Dozer Line
- Completed Line
- ⊗ ⊗ Completed Dozer Line
- H - H - Hand Line
- R - R - Road as Completed Line



Tepee Springs Fire
 IAP 4
 ID-PAF-000192
 9/16/2015
 95,709 Acres

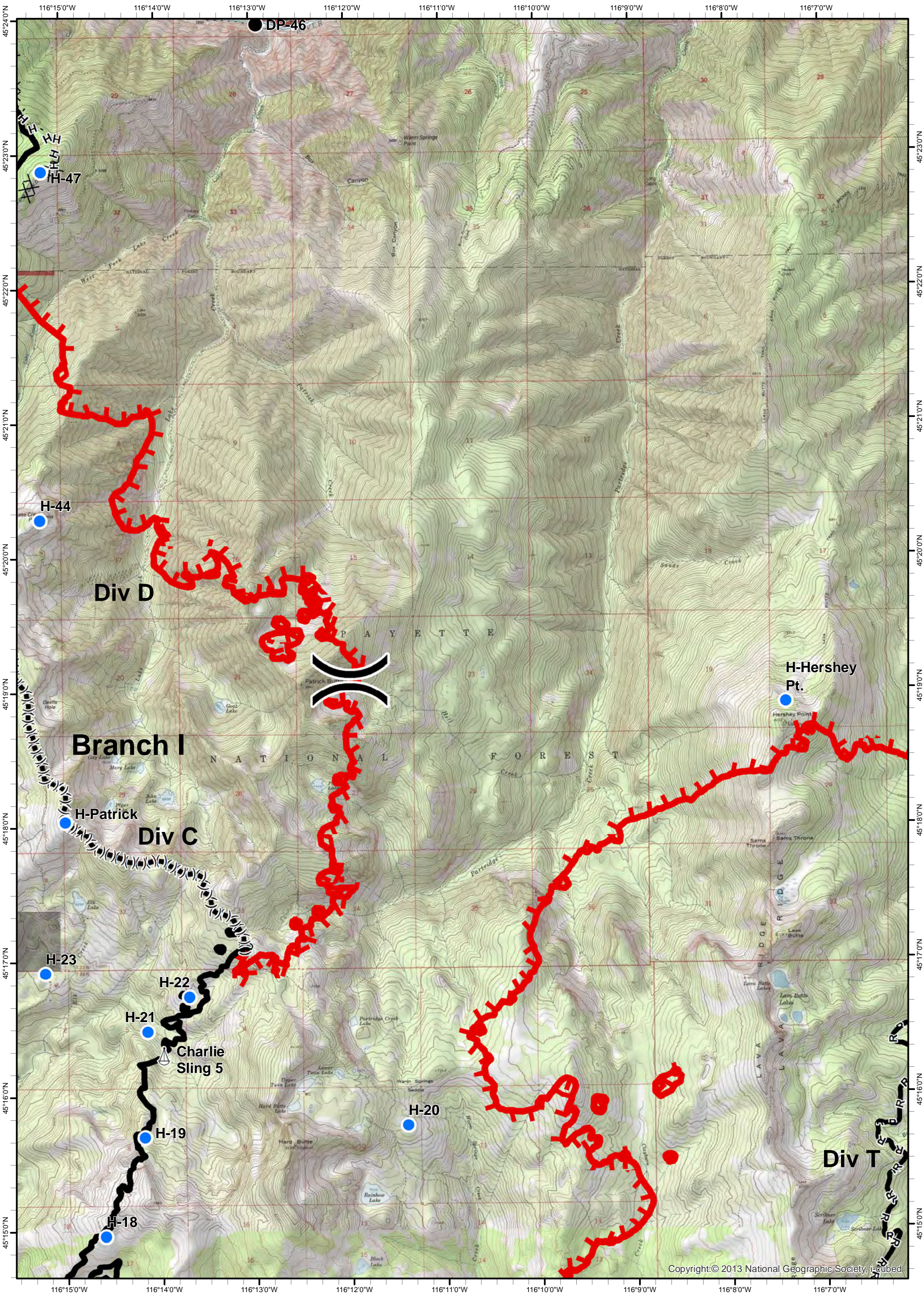
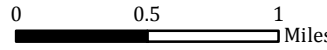


- ★ Cities/Towns
- () Division Breaks
- ⊙ Camp
- Drop Point

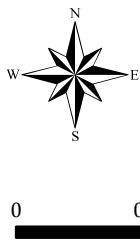
- 🚒 Lookout
- 🚁 Helispot
- 🚧 Sling Site
- 🏠 Ranch

- 🌊 Water Source
- WX Mobile Weather Unit
- 🚫 Limited Access

- 🔥 Uncontrolled Fire Edge
- () () () Ridge / Geographic Feature
- ⊗ Proposed Dozer Line
- ▬ Completed Line
- ⊗ ⊗ Completed Dozer Line
- H - H - Hand Line
- R - R - Road as Completed Line



Tepee Springs Fire
 IAP 5
 ID-PAF-000192
 9/16/2015
 95,709 Acres



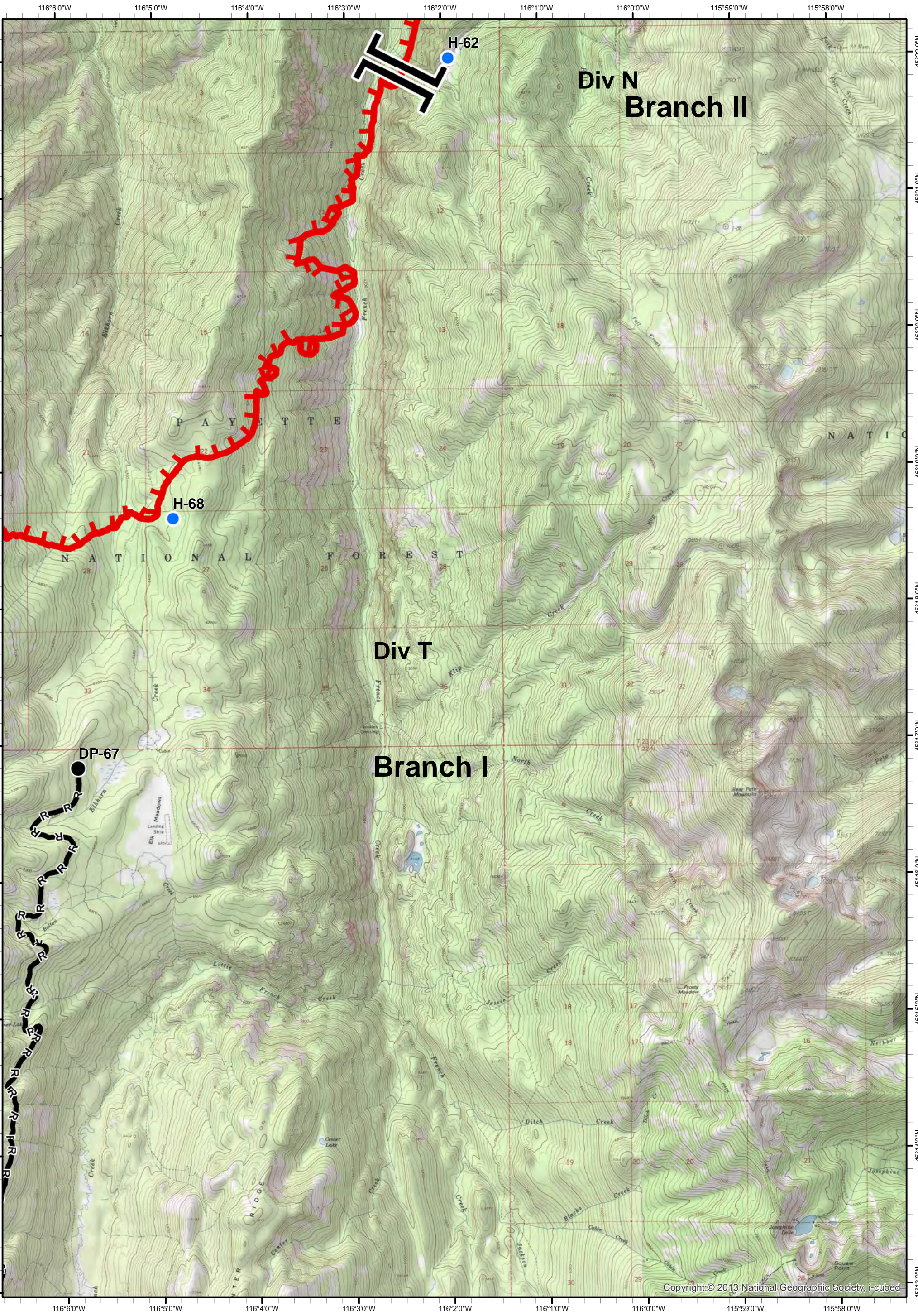
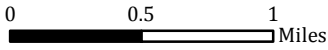
- ★ Cities/Towns
-) (Division Breaks
- ⊙ Camp
- Drop Point

- 📏 Lookout
- 🚁 Helispot
- 🚢 Sling Site
- 🏠 Ranch

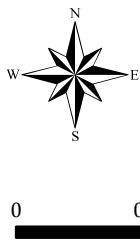
- 🌊 Water Source
- WX Mobile Weather Unit
- 🚫 Limited Access

- 🔴 Uncontrolled Fire Edge
- () () Ridge / Geographic Feature
- ⊗ Proposed Dozer Line
- ▬ Completed Line

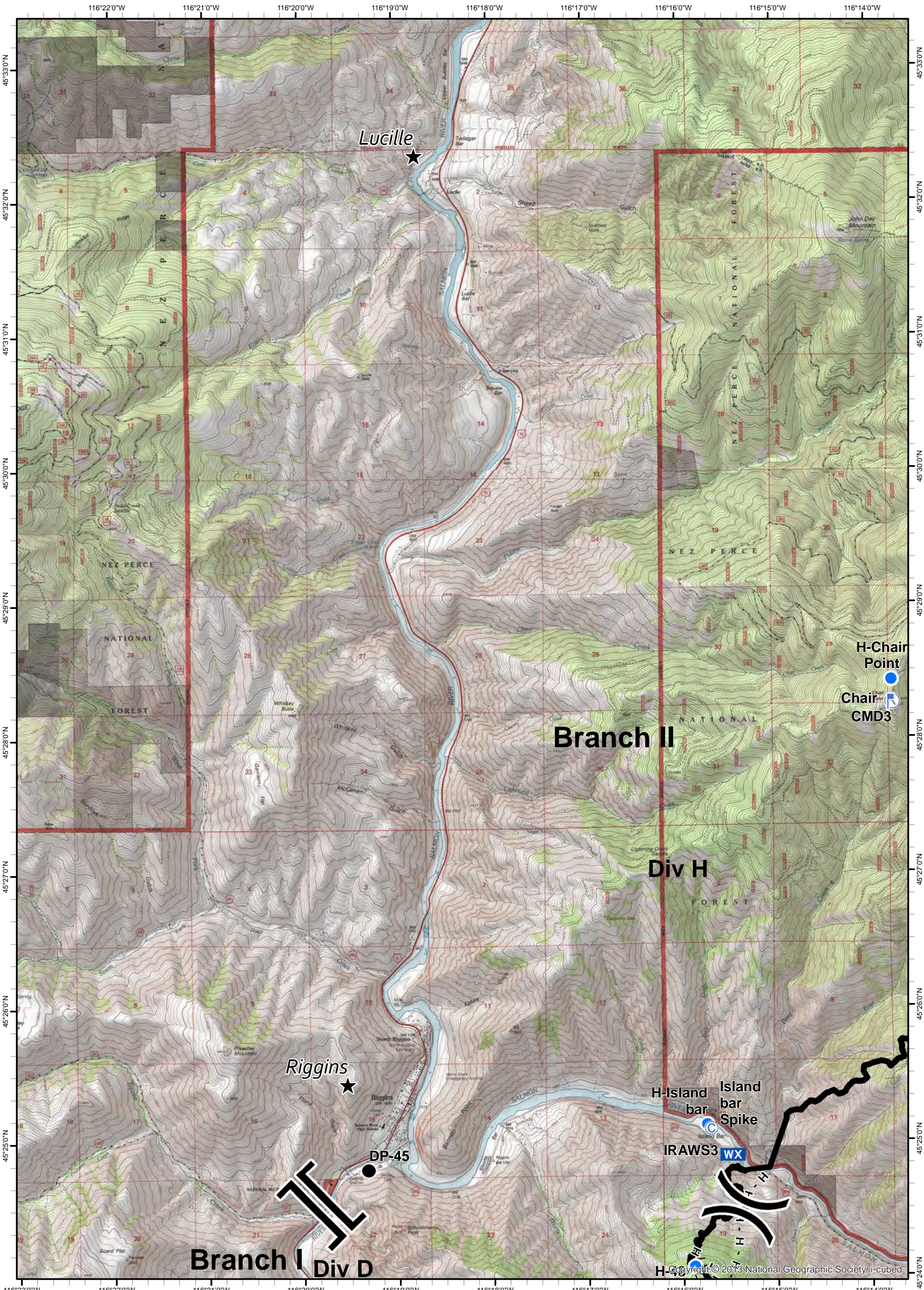
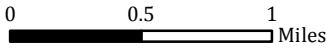
- ⊗⊗ Completed Dozer Line
- H - H - Hand Line
- R - R - Road as Completed Line



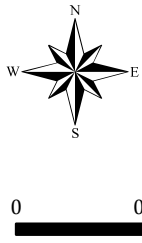
Tepee Springs Fire
 IAP 6
 ID-PAF-000192
 9/16/2015
 95,709 Acres



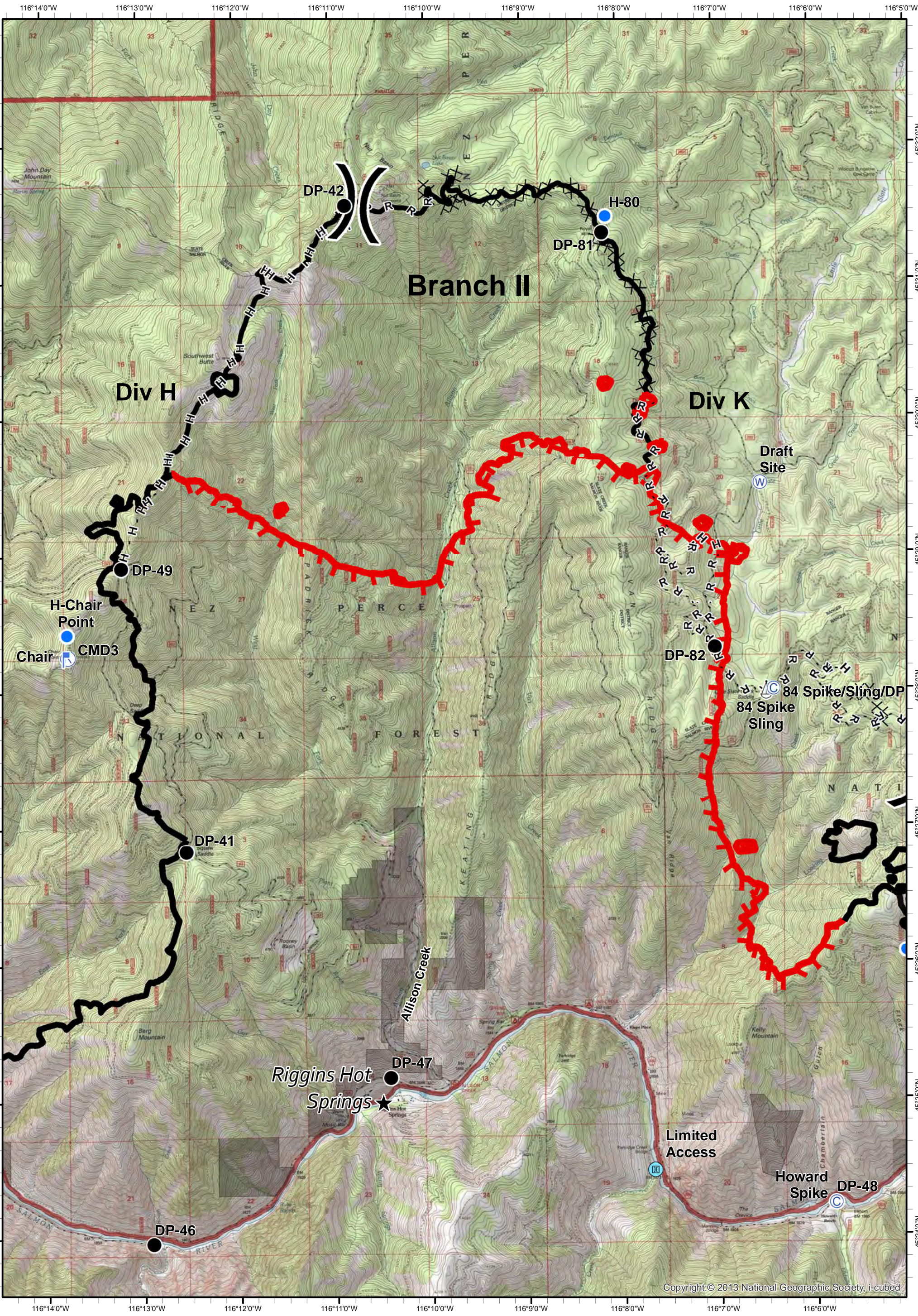
- ★ Cities/Towns
- () Division Breaks
- ⊙ Camp
- Drop Point
- 🚒 Lookout
- Helispot
- ⚙ Sling Site
- ▲ Ranch
- ⊙ Water Source
- WX Mobile Weather Unit
- ⊙ Limited Access
- 🔴 Uncontrolled Fire Edge
- () () () Ridge / Geographic Feature
- ⊙ Proposed Dozer Line
- ▬ Completed Line
- ⊗ ⊗ Completed Dozer Line
- H - H - Hand Line
- R - R - Road as Completed Line



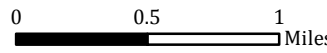
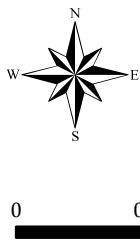
Tepee Springs Fire
IAP 7
ID-PAF-000192
9/16/2015
95,709 Acres



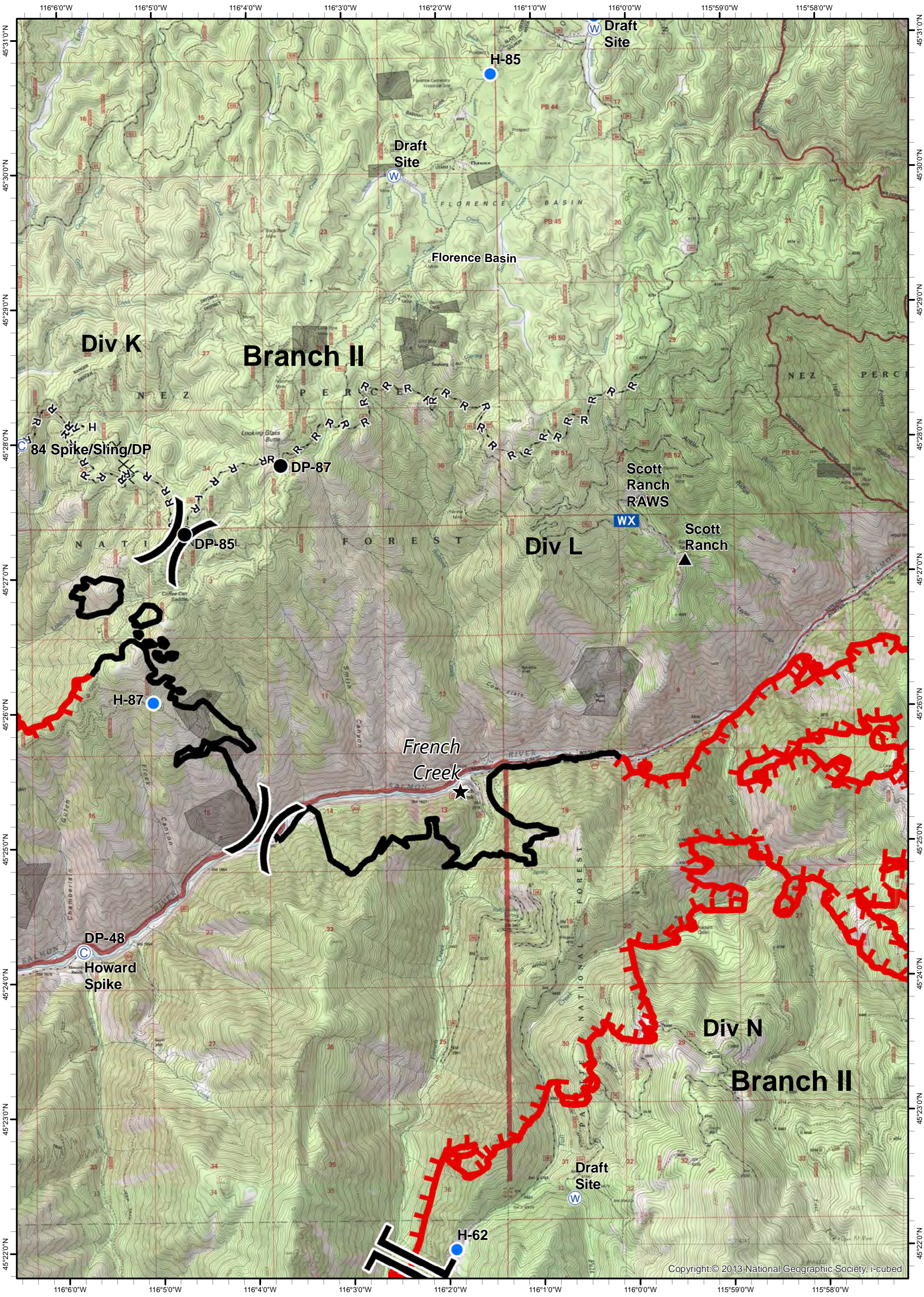
- ★ Cities/Towns
- () Division Breaks
- ⊙ Camp
- Drop Point
- 🚒 Lookout
- 🚁 Helispot
- 🚢 Sling Site
- 🏠 Ranch
- 🌊 Water Source
- WX Mobile Weather Unit
- 🚧 Limited Access
- 🔴 Uncontrolled Fire Edge
- () () () Ridge / Geographic Feature
- ⊗ Proposed Dozer Line
- ⬜ Completed Line
- ⊗ ⊗ Completed Dozer Line
- H - H - Hand Line
- R - R - Road as Completed Line



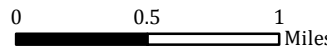
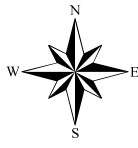
Tepee Springs Fire
 IAP 8
 ID-PAF-000192
 9/16/2015
 95,709 Acres



- ★ Cities/Towns
- () Division Breaks
- ⊙ Camp
- Drop Point
- ⚡ Lookout
- Helispot
- ⚓ Sling Site
- ▲ Ranch
- ⊙ Water Source
- WX Mobile Weather Unit
- ⊙ Limited Access
- Uncontrolled Fire Edge
- () () () Ridge / Geographic Feature
- ⊙ Proposed Dozer Line
- Completed Line
- Completed Dozer Line
- H - H - Hand Line
- R - R - Road as Completed Line



Tepee Springs Fire
 IAP 9
 ID-PAF-000192
 9/16/2015
 95,709 Acres



- ★ Cities/Towns
- () Division Breaks
- ⊙ Camp
- Drop Point
- ⚓ Sling Site
- ▲ Ranch
- 📏 Lookout
- Helispot
- ⚓ Sling Site
- ▲ Ranch
- Ⓜ Water Source
- WX Mobile Weather Unit
- Ⓜ Limited Access
- 🔴 Uncontrolled Fire Edge
- () () () Ridge / Geographic Feature
- ⊙ Proposed Dozer Line
- ▬ Completed Line
- ⊗ ⊗ Completed Dozer Line
- H - H - Hand Line
- R - R - Road as Completed Line

