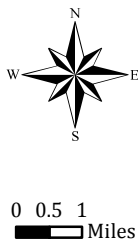
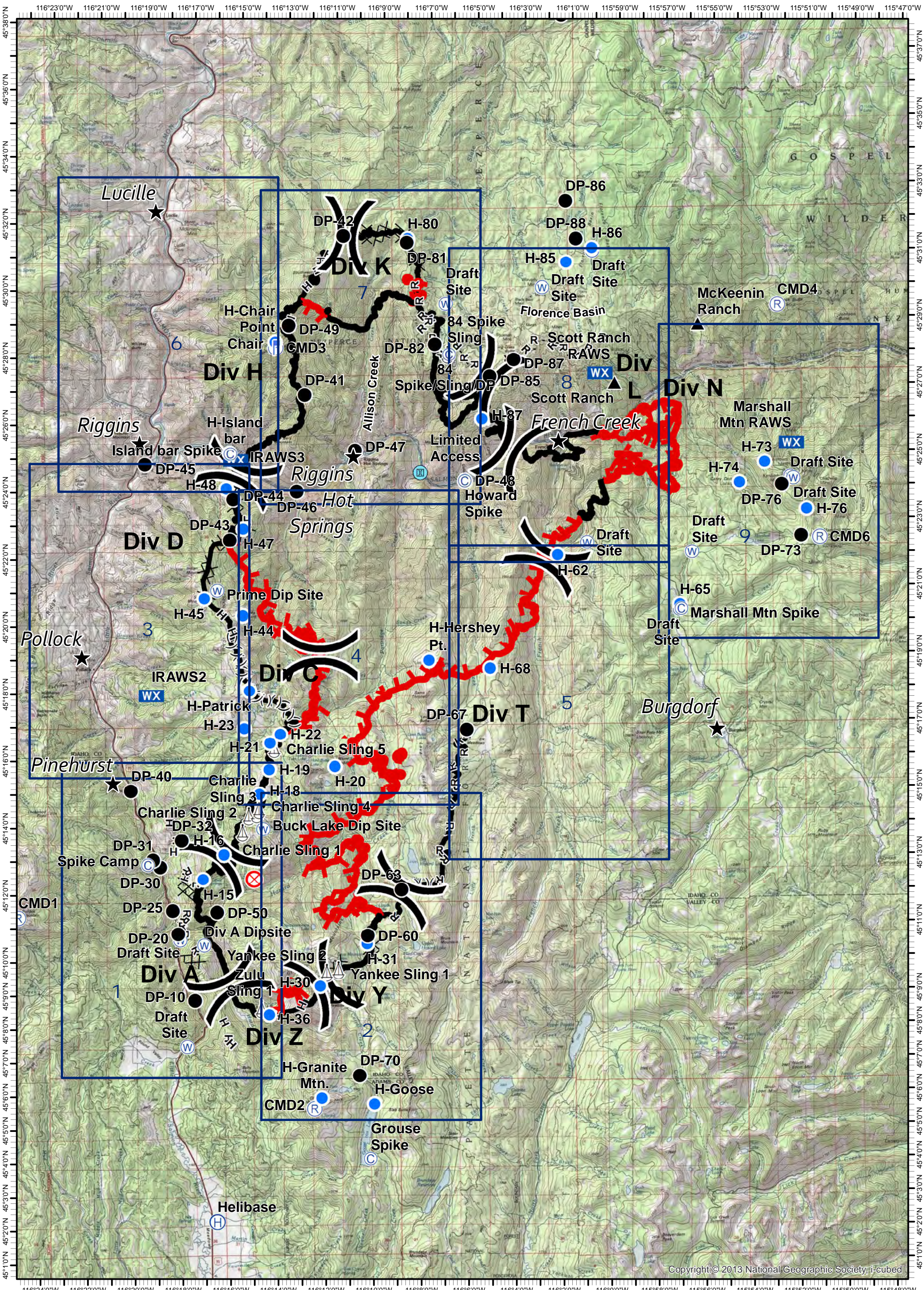


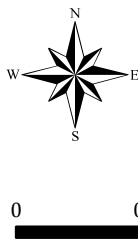
Tepee Springs Fire  
 IAP Overview Map  
 ID-PAF-000192  
 9/19/2015  
 95,709 Acres



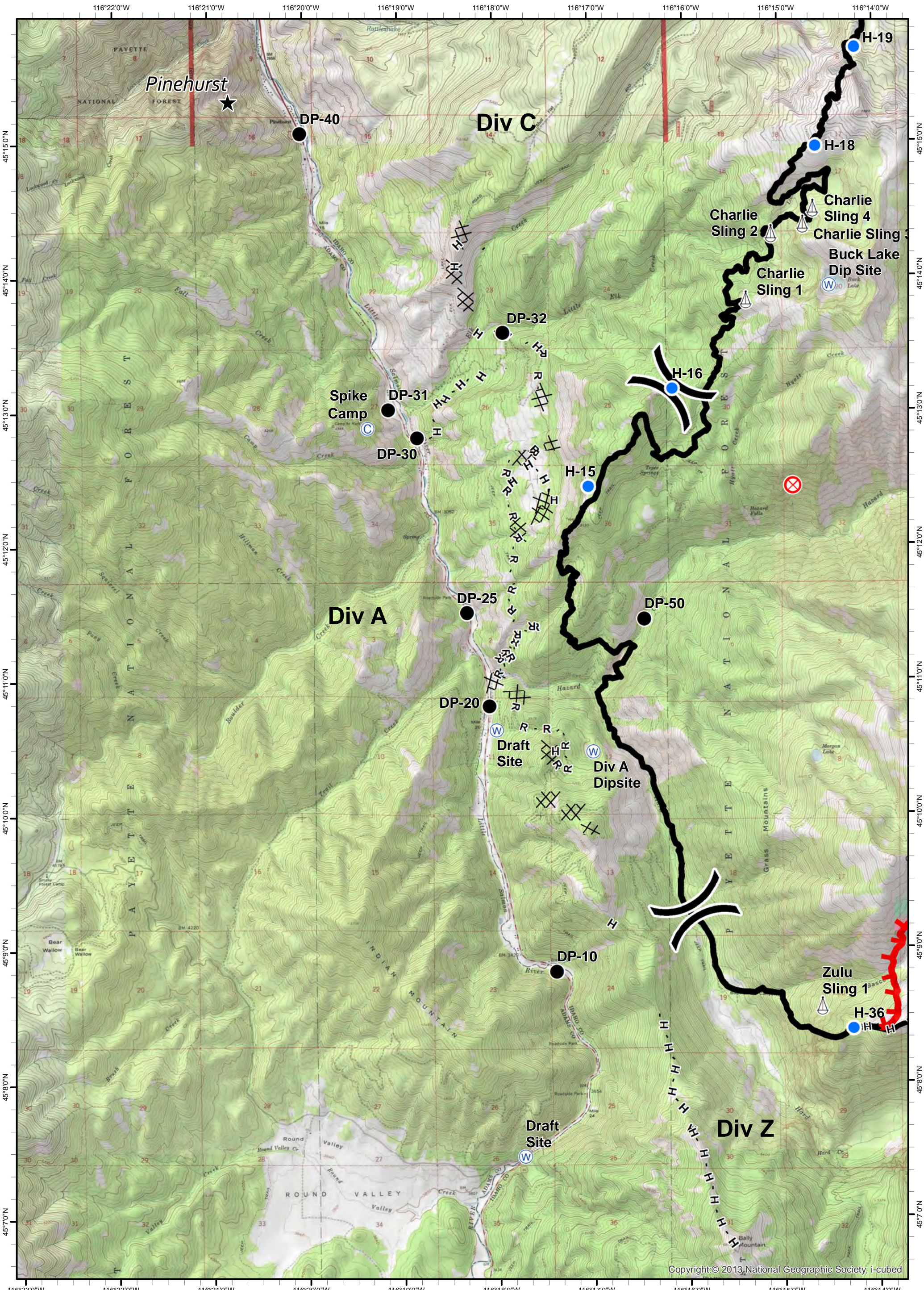
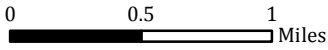
- ★ Cities/Towns
- ( ) Division Breaks
- ⊙ Camp
- Drop Point
- ⚡ Lookout
- Helispot
- ⚓ Sling Site
- ▲ Ranch
- ⊙ Water Source
- WX Mobile Weather Unit
- ⊙ Limited Access
- Uncontrolled Fire Edge
- (X)(X)(X) Ridge / Geographic Feature
- Proposed Dozer Line
- Completed Line
- Completed Dozer Line
- H - H - Hand Line
- R - R - Road as Completed Line



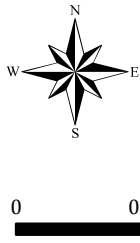
Tepee Springs Fire  
 IAP 1  
 ID-PAF-000192  
 9/19/2015  
 95,709 Acres



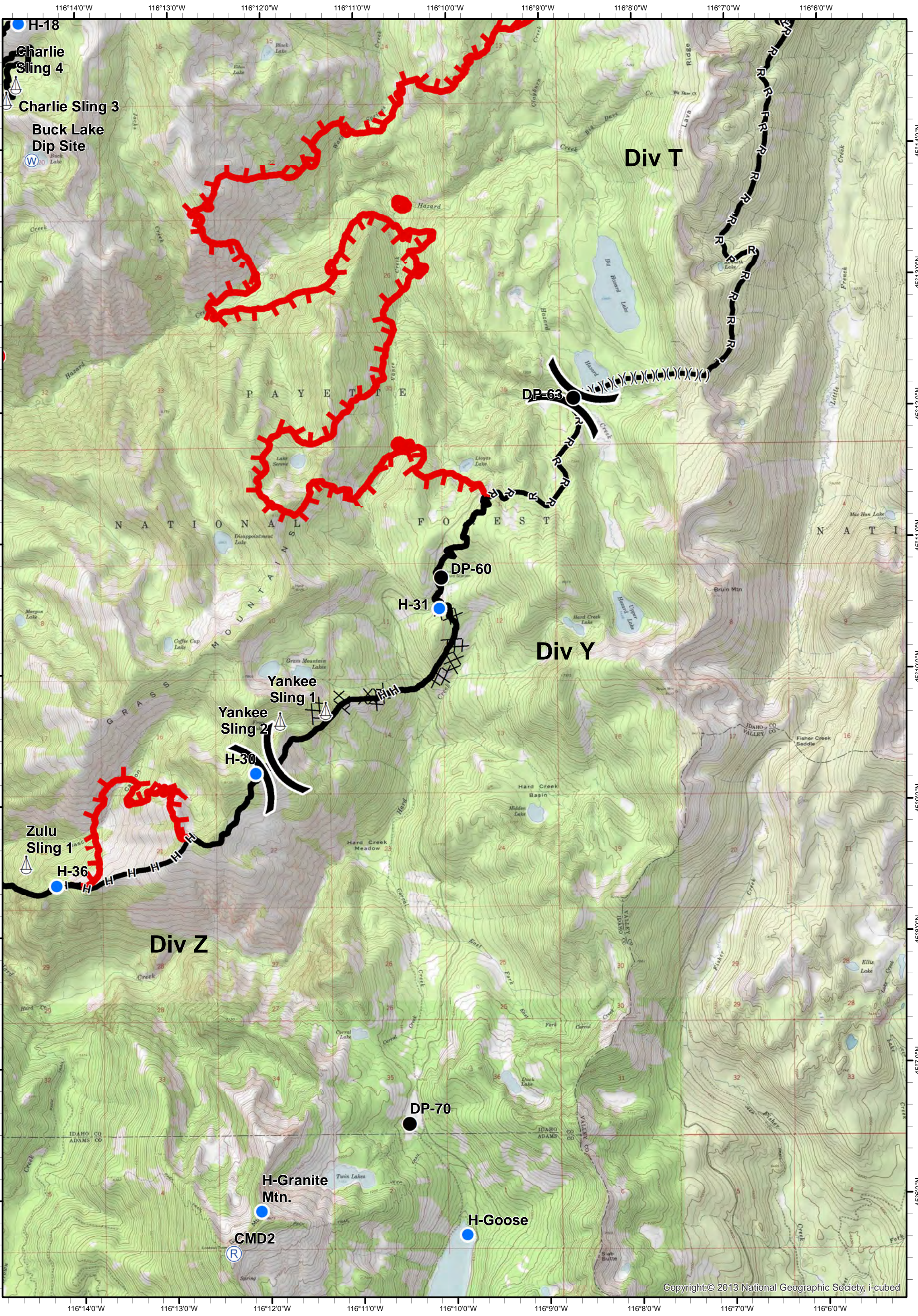
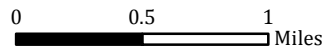
- ★ Cities/Towns
- ( ) Division Breaks
- ⊙ Camp
- Drop Point
- 🚒 Lookout
- 🚁 Helispot
- ⚓ Sling Site
- ▲ Ranch
- 🌊 Water Source
- WX Mobile Weather Unit
- ⊠ Limited Access
- 🔴 Uncontrolled Fire Edge
- (X)(X)(X) Ridge / Geographic Feature
- ⊗ Proposed Dozer Line
- ▬ Completed Line
- ⊗ Completed Dozer Line
- H - H - Hand Line
- R - R - Road as Completed Line



**Tepee Springs Fire**  
**IAP 2**  
**ID-PAF-000192**  
**9/19/2015**  
**95,709 Acres**



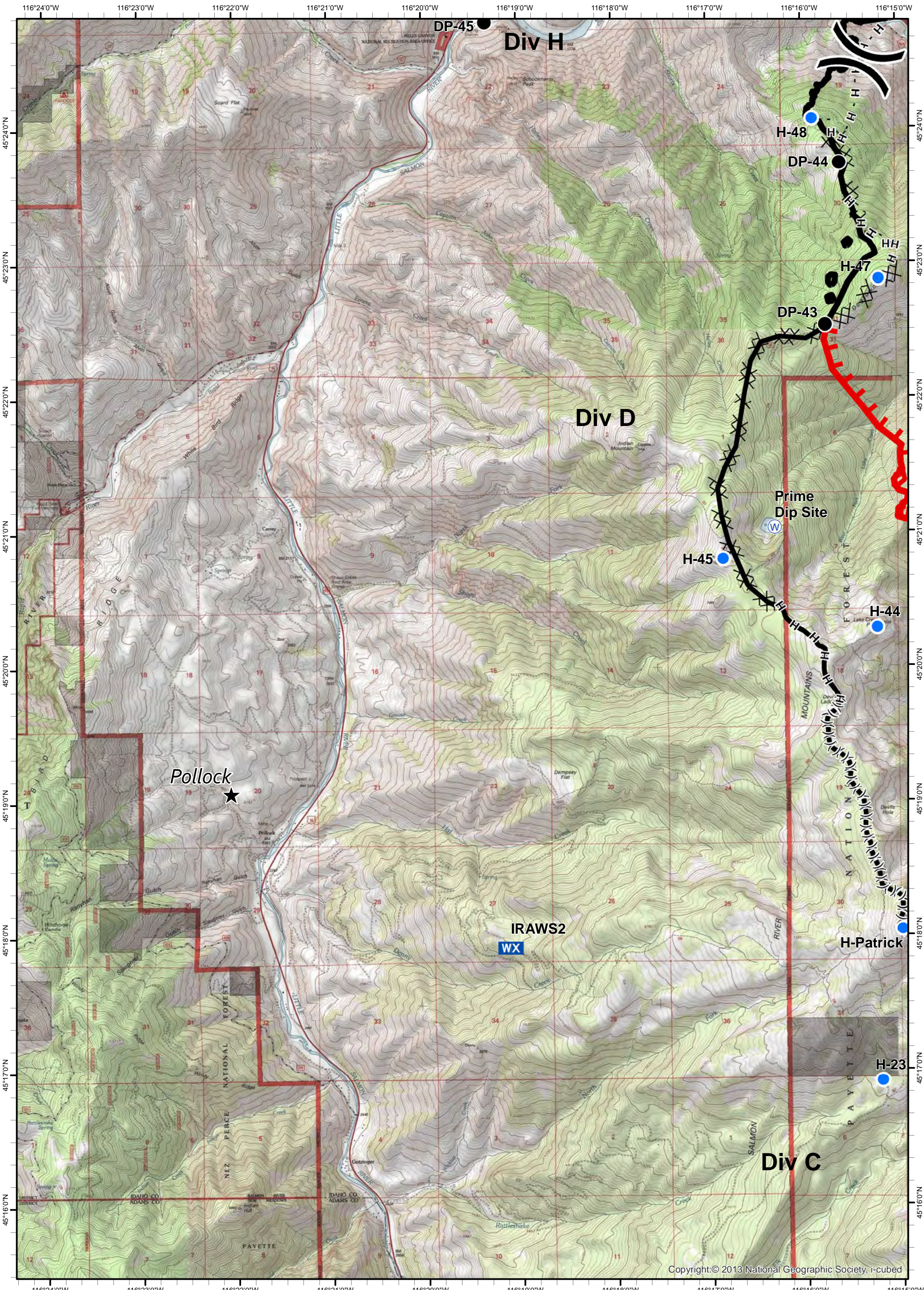
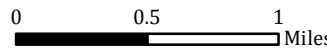
- ★ Cities/Towns
- ( ) Division Breaks
- ⊙ Camp
- Drop Point
- 🚒 Lookout
- Helipoint
- ⚓ Sling Site
- ▲ Ranch
- ⊙ Water Source
- WX Mobile Weather Unit
- ⊠ Limited Access
- 🔴 Uncontrolled Fire Edge
- (X)(X)(X) Ridge / Geographic Feature
- ⊗ Proposed Dozer Line
- Completed Line
- ⊗ Completed Dozer Line
- H - H - Hand Line
- R - R - Road as Completed Line



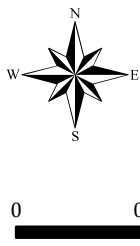
Tepee Springs Fire  
 IAP 3  
 ID-PAF-000192  
 9/19/2015  
 95,709 Acres



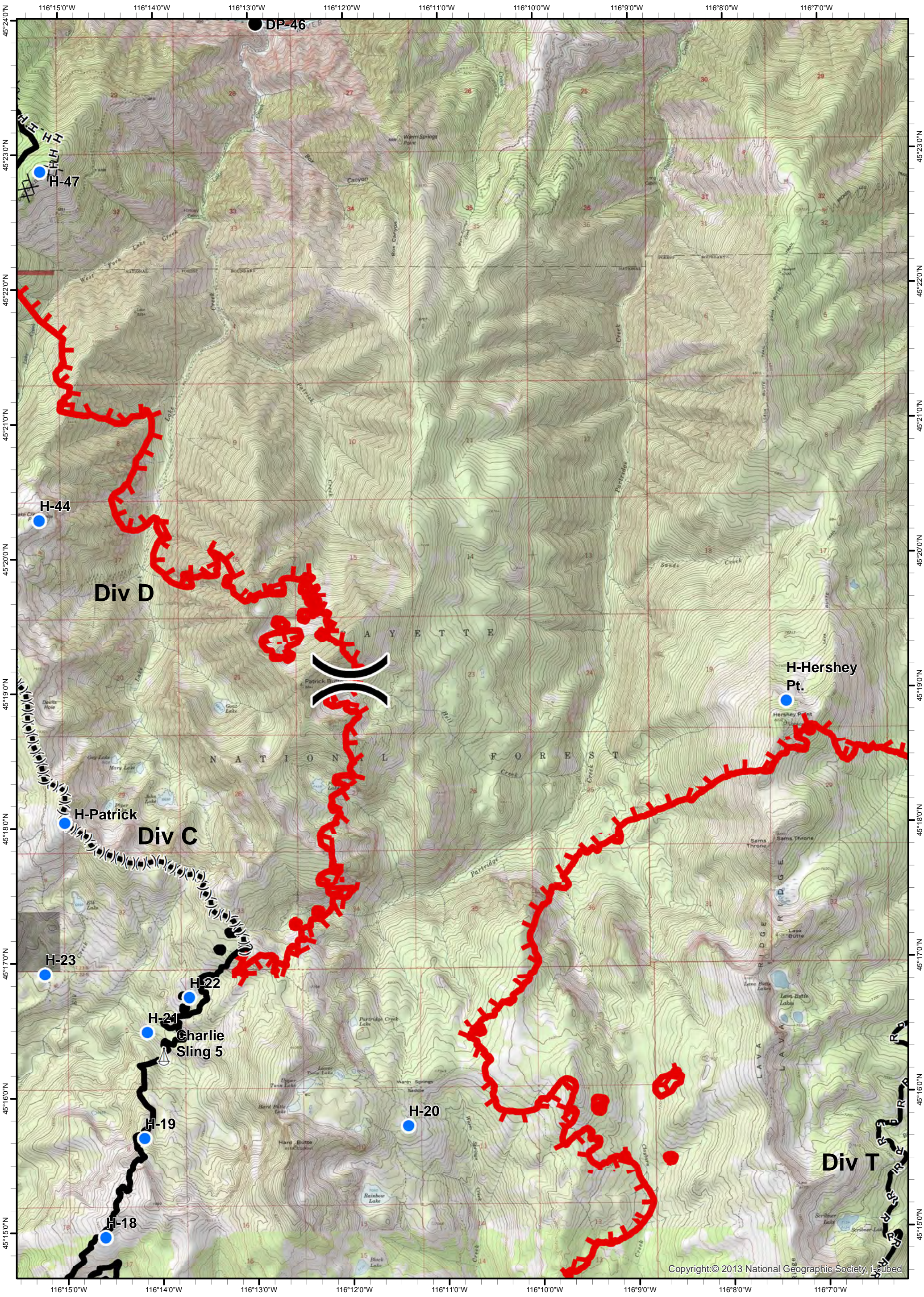
- ★ Cities/Towns
- ( ) Division Breaks
- ⊙ Camp
- Drop Point
- ⚓ Lookout
- Helispot
- ⚓ Sling Site
- ▲ Ranch
- ⊙ Water Source
- WX Mobile Weather Unit
- ⊙ Limited Access
- Uncontrolled Fire Edge
- (X)(X) Ridge / Geographic Feature
- ⊙ Proposed Dozer Line
- Completed Line
- Completed Dozer Line
- H - H - Hand Line
- R - R - Road as Completed Line



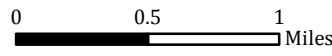
Tepee Springs Fire  
 IAP 4  
 ID-PAF-000192  
 9/19/2015  
 95,709 Acres



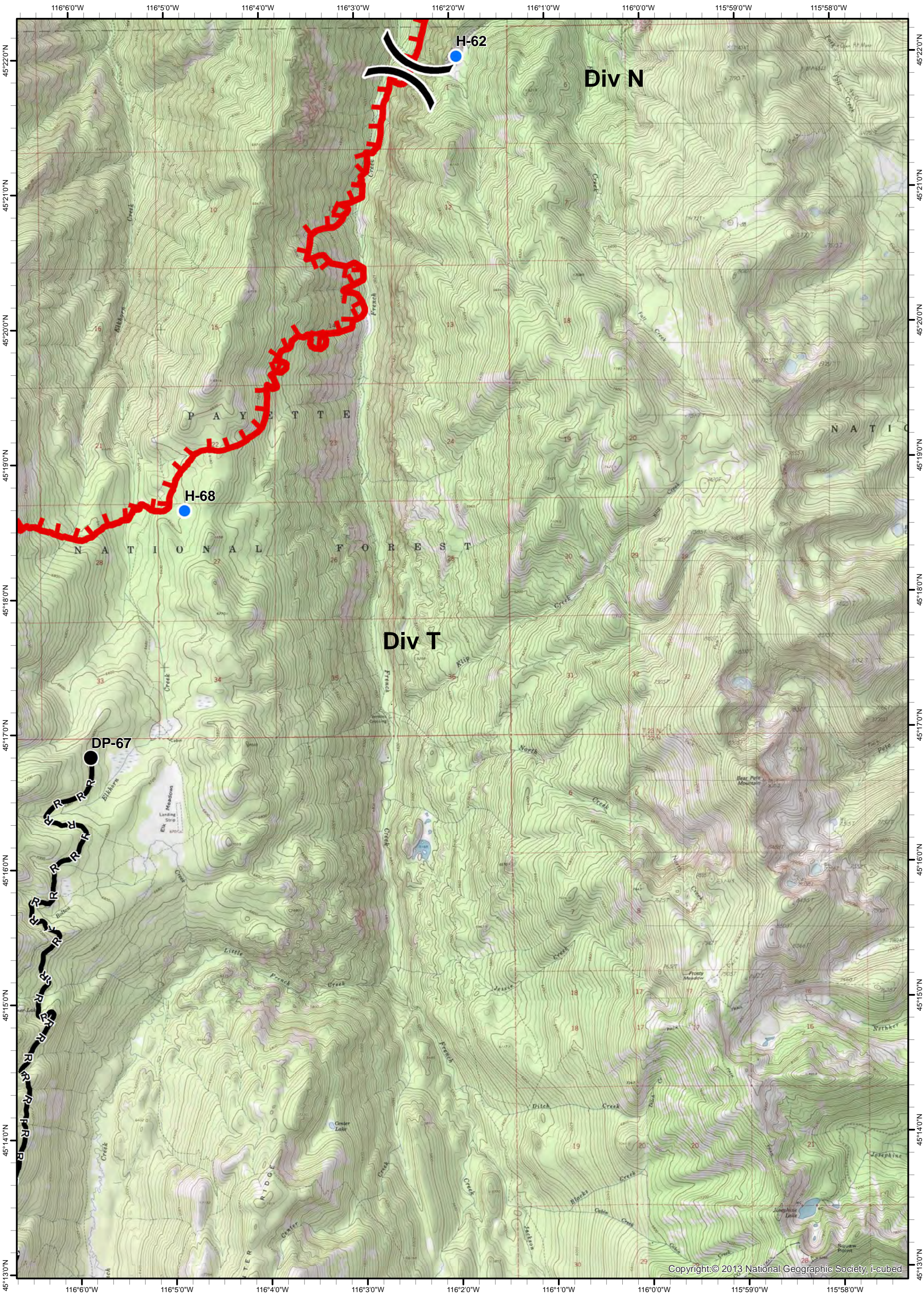
- ★ Cities/Towns
- ( ) Division Breaks
- ⊙ Camp
- Drop Point
- 🚒 Lookout
- 🚁 Helispot
- 🚢 Sling Site
- 🏠 Ranch
- 🌊 Water Source
- WX Mobile Weather Unit
- 🚫 Limited Access
- 🔴 Uncontrolled Fire Edge
- (X)(X)(X) Ridge / Geographic Feature
- ⊗ Proposed Dozer Line
- ▬ Completed Line
- ⊗ Completed Dozer Line
- H - H - Hand Line
- R - R - Road as Completed Line



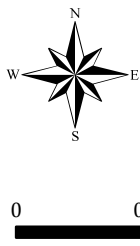
Tepee Springs Fire  
 IAP 5  
 ID-PAF-000192  
 9/19/2015  
 95,709 Acres



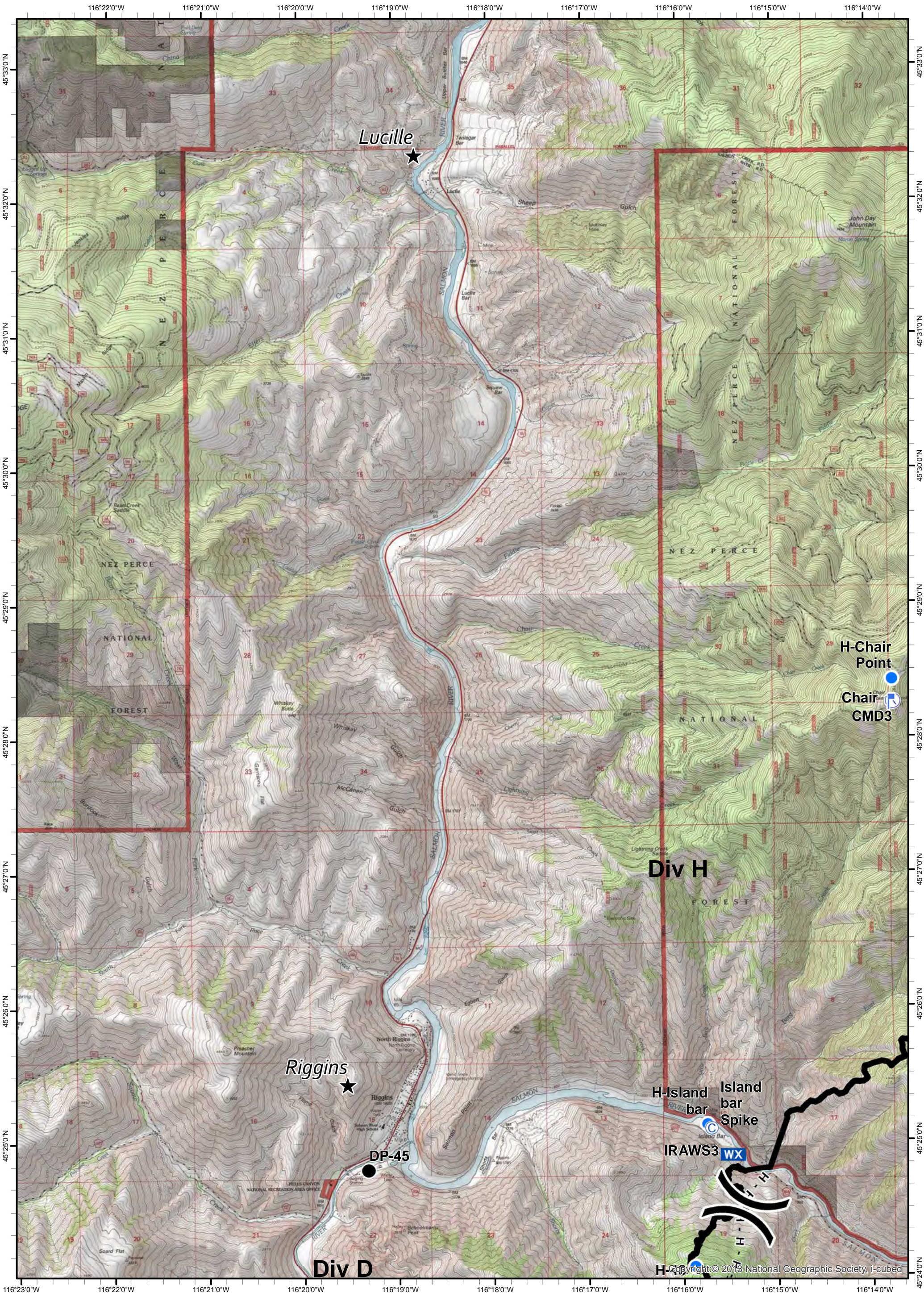
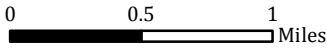
- ★ Cities/Towns
- ( ) Division Breaks
- ⊙ Camp
- Drop Point
- ⚡ Lookout
- Helispot
- ⚓ Sling Site
- ▲ Ranch
- Ⓜ Water Source
- WX Mobile Weather Unit
- Ⓜ Limited Access
- Uncontrolled Fire Edge
- (X)(X) Ridge / Geographic Feature
- Proposed Dozer Line
- Completed Line
- Completed Dozer Line
- H - H - Hand Line
- R - R - Road as Completed Line



Tepee Springs Fire  
 IAP 6  
 ID-PAF-000192  
 9/19/2015  
 95,709 Acres



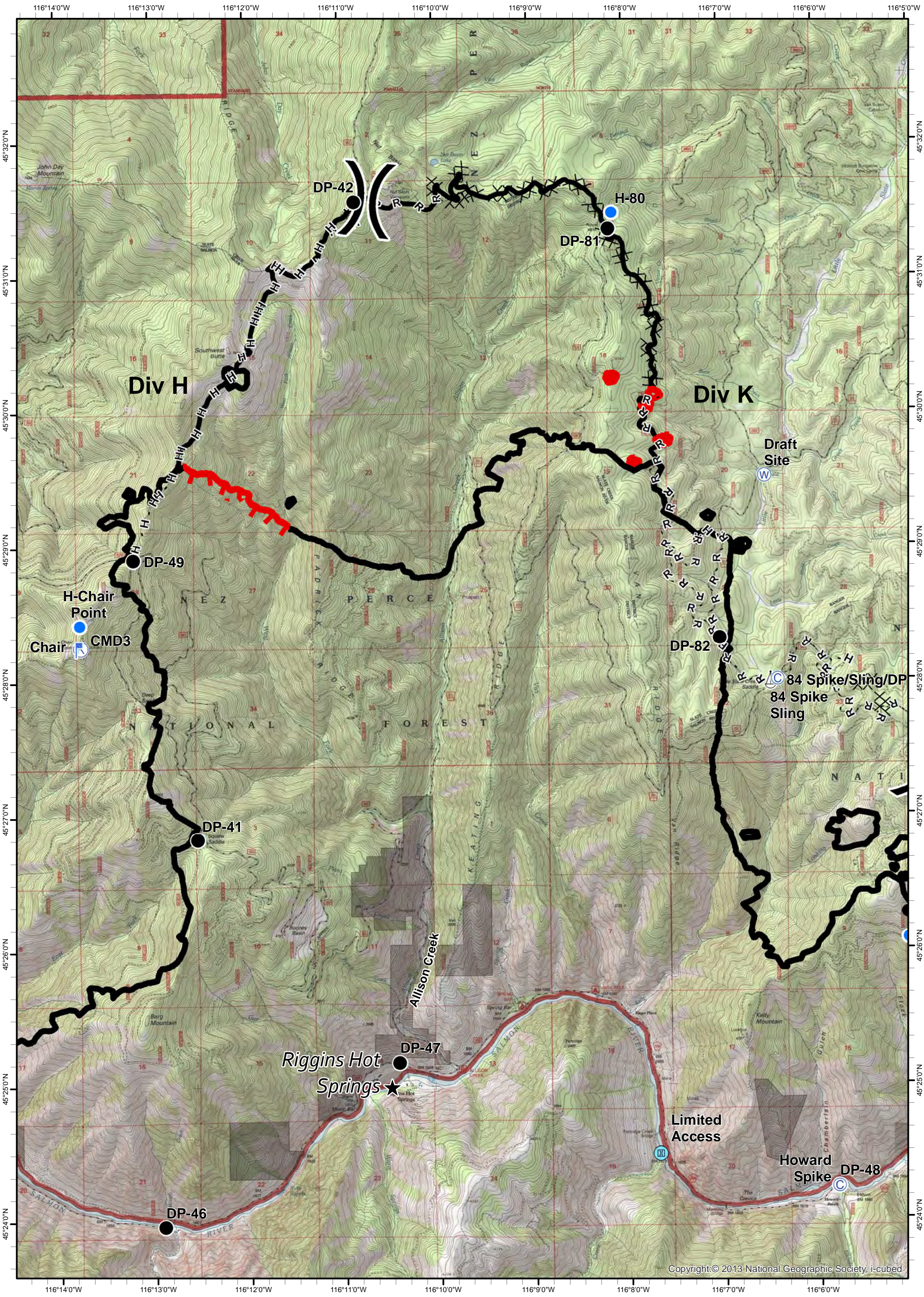
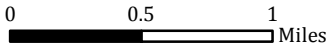
- ★ Cities/Towns
- ( ) Division Breaks
- ⊙ Camp
- Drop Point
- ⚠ Lookout
- Helispot
- ⚓ Sling Site
- ▲ Ranch
- ⊙ Water Source
- WX Mobile Weather Unit
- ⊙ Limited Access
- Uncontrolled Fire Edge
- (X)(X) Ridge / Geographic Feature
- Proposed Dozer Line
- Completed Line
- Completed Dozer Line
- H - H - Hand Line
- R - R - Road as Completed Line



Tepee Springs Fire  
 IAP 7  
 ID-PAF-000192  
 9/19/2015  
 95,709 Acres

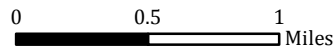


- ★ Cities/Towns
- ( ) Division Breaks
- ⊙ Camp
- Drop Point
- 🚒 Lookout
- 🚁 Helispot
- ⚙ Sling Site
- ▲ Ranch
- 🌊 Water Source
- WX Mobile Weather Unit
- Ⓜ Limited Access
- 🔴 Uncontrolled Fire Edge
- (X)(X)(X) Ridge / Geographic Feature
- ⊗ Proposed Dozer Line
- ▬ Completed Line
- ⊗ Completed Dozer Line
- H - H - Hand Line
- R - R - Road as Completed Line

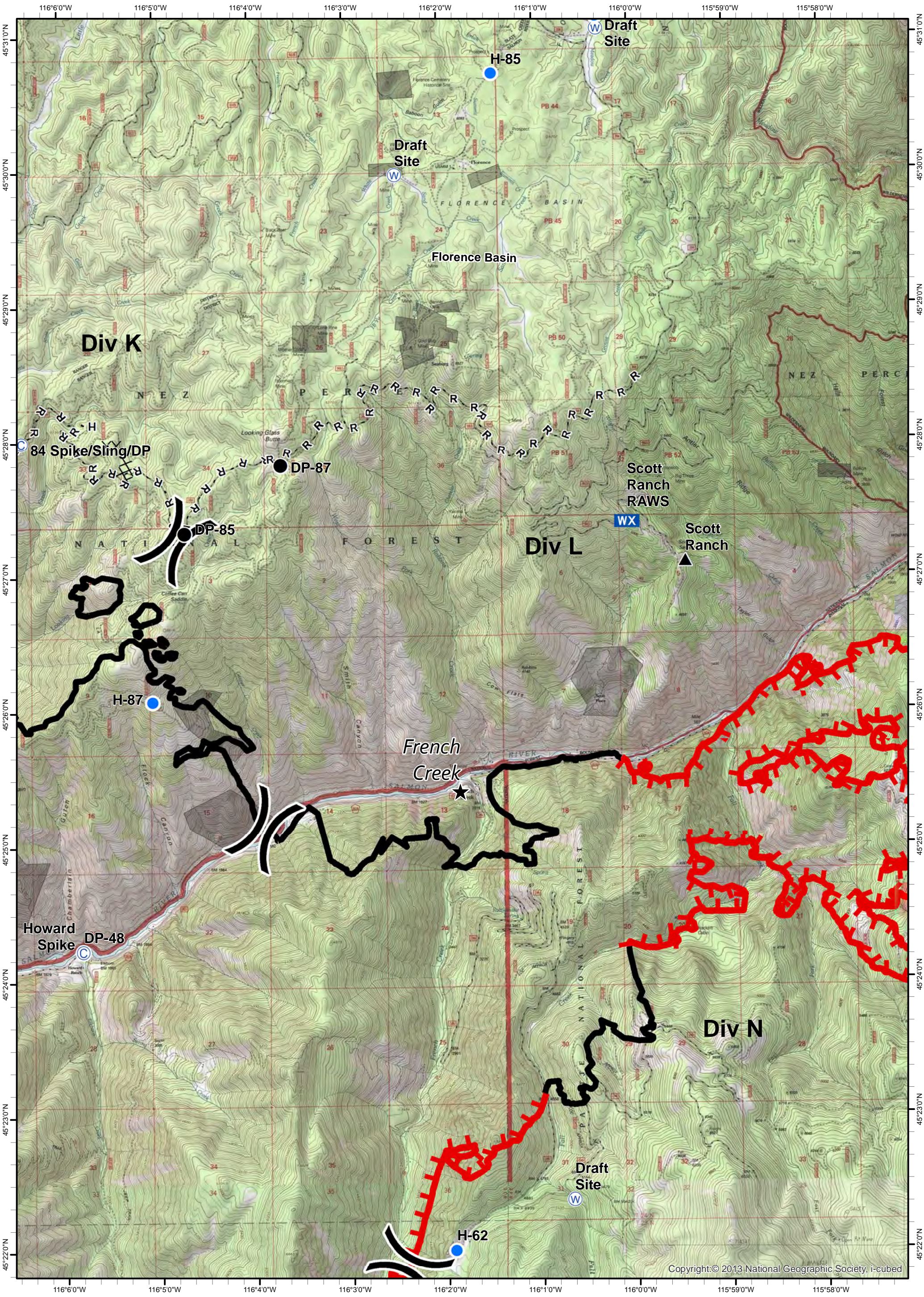




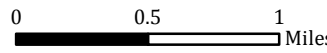
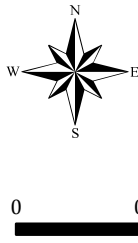
Tepee Springs Fire  
 IAP 8  
 ID-PAF-000192  
 9/19/2015  
 95,709 Acres



- ★ Cities/Towns
- ( ) Division Breaks
- ⊙ Camp
- Drop Point
- ⚡ Lookout
- Helispot
- ⚓ Sling Site
- ▲ Ranch
- ⊙ Water Source
- WX Mobile Weather Unit
- ⊙ Limited Access
- Uncontrolled Fire Edge
- (X)(X) Ridge / Geographic Feature
- ⊙ Proposed Dozer Line
- Completed Line
- Completed Dozer Line
- H - H - Hand Line
- R - R - Road as Completed Line



**Tepee Springs Fire**  
**IAP 9**  
**ID-PAF-000192**  
**9/19/2015**  
**95,709 Acres**



- ★ Cities/Towns
- ( ) Division Breaks
- ⊙ Camp
- Drop Point
- 🚰 Lookout
- Helispot
- ⚓ Sling Site
- ▲ Ranch
- ⊙ Water Source
- WX Mobile Weather Unit
- ⊙ Limited Access
- Uncontrolled Fire Edge
- (X)(X) Ridge / Geographic Feature
- ⊙ Proposed Dozer Line
- Completed Line
- Completed Dozer Line
- H - H - Hand Line
- R - R - Road as Completed Line

