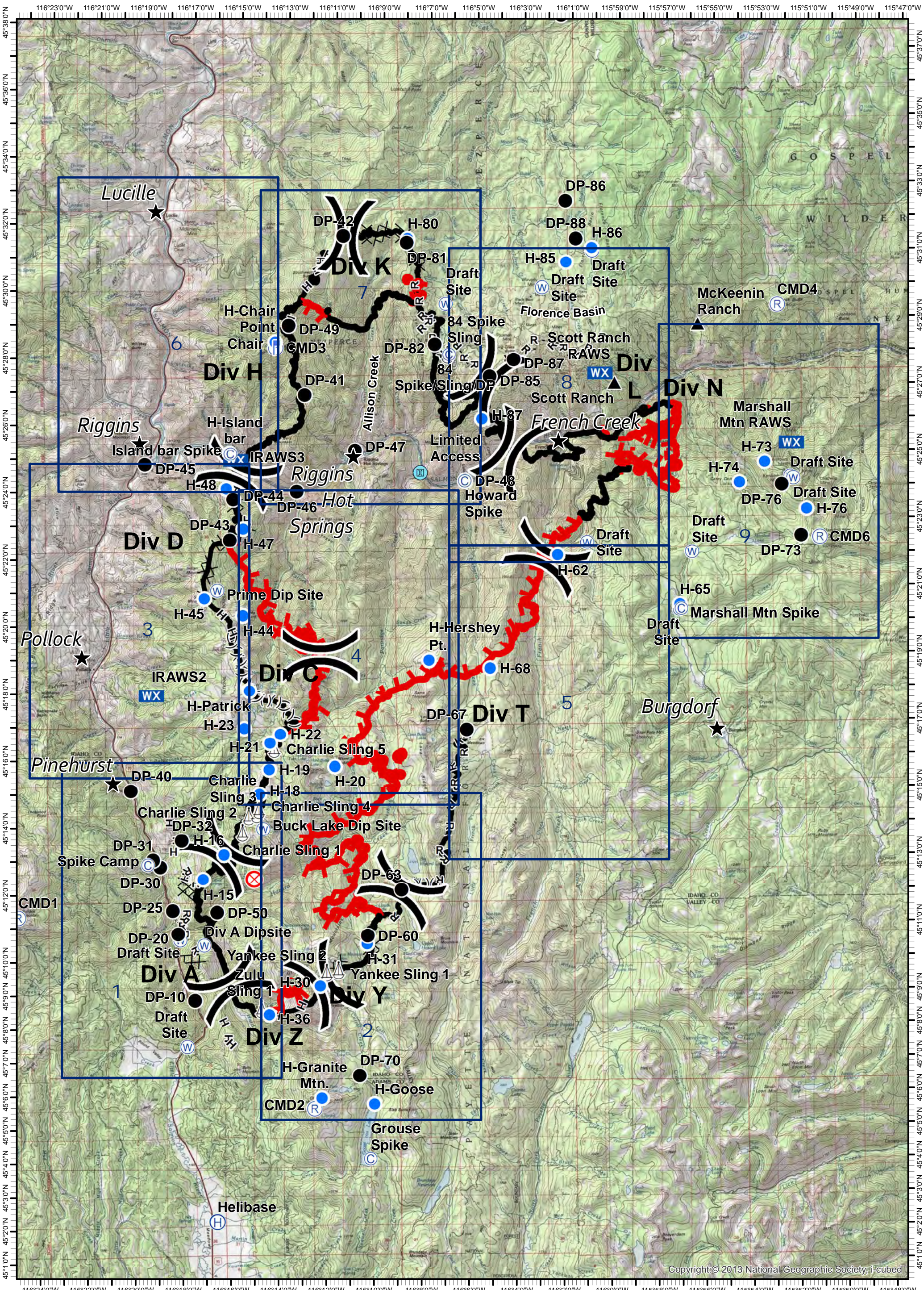


Tepee Springs Fire
 IAP Overview Map
 ID-PAF-000192
 9/20/2015
 95,709 Acres

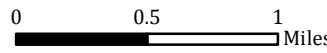
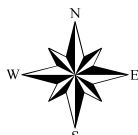


0 0.5 1
 Miles

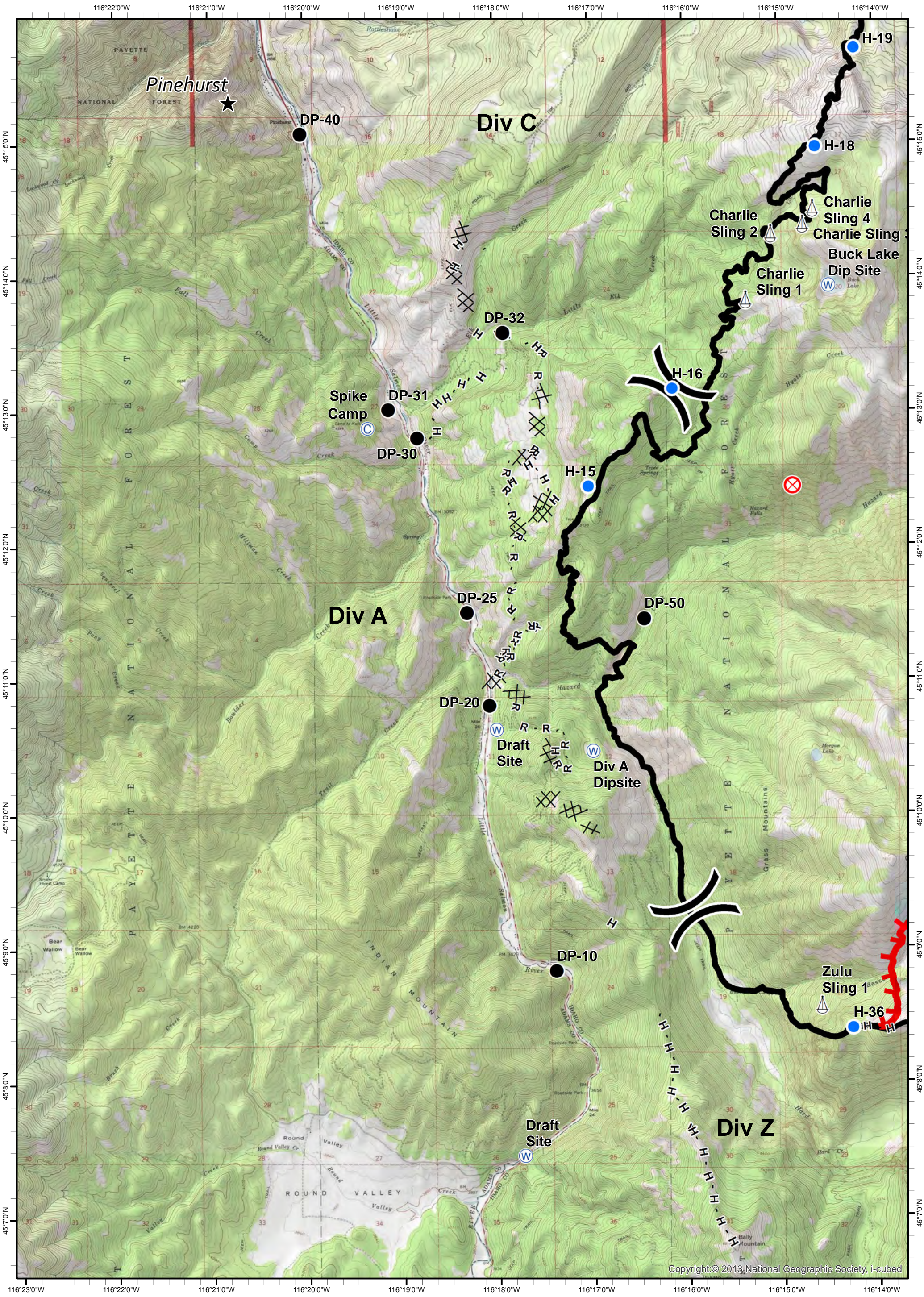
- | | | | | | | | | | | |
|---|-----------------|---|------------|----|---------------------|---------|----------------------------|----------------|---------|------------------------|
| ★ | Cities/Towns | ⬇ | Lookout | ⊙ | Water Source | ▬ | Uncontrolled Fire Edge | ⊗ | ⊗ | Completed Dozer Line |
|) | Division Breaks | ● | Helispot | WX | Mobile Weather Unit | () () | Ridge / Geographic Feature | ⊗ | ● | Proposed Dozer Line |
| ⊙ | Camp | ⚓ | Sling Site | ⊙ | Limited Access | ⊗ | ● | Completed Line | H - H - | Hand Line |
| ● | Drop Point | ▲ | Ranch | | | ▬ | ▬ | Completed Line | R - R - | Road as Completed Line |



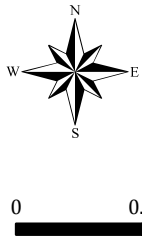
Tepee Springs Fire
IAP 1
ID-PAF-000192
9/20/2015
95,709 Acres



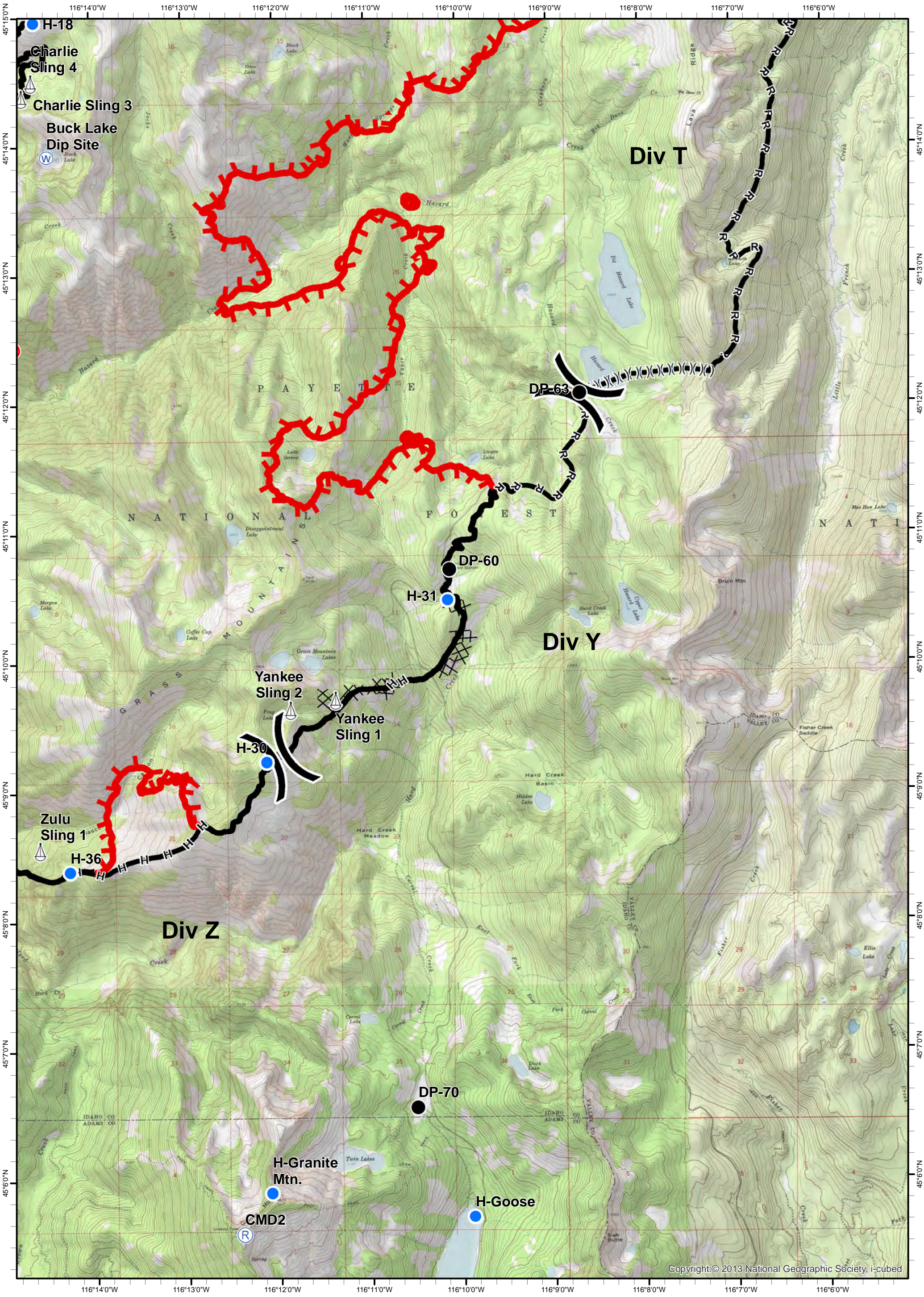
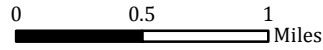
- ★ Cities/Towns
- () Division Breaks
- ⊙ Camp
- Drop Point
- ⚡ Lookout
- Helispot
- ⚓ Sling Site
- ▲ Ranch
- ⊙ Water Source
- WX Mobile Weather Unit
- ⊙ Limited Access
- Uncontrolled Fire Edge
- () Ridge / Geographic Feature
- ⊙ Proposed Dozer Line
- Completed Line
- Completed Dozer Line
- H - H - Hand Line
- R - R - Road as Completed Line



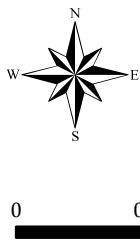
Tepee Springs Fire
IAP 2
ID-PAF-000192
9/20/2015
95,709 Acres



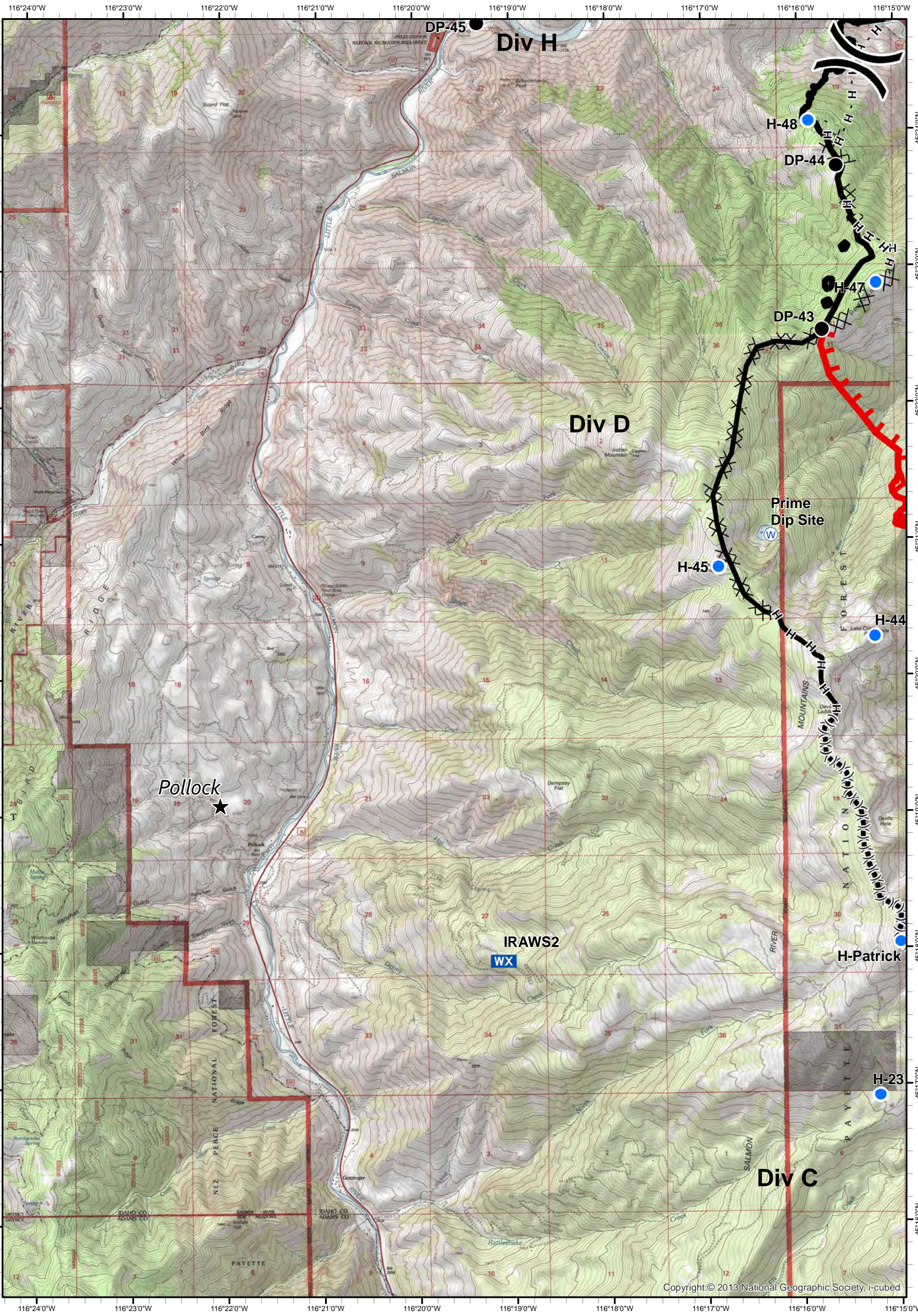
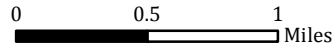
- ★ Cities/Towns
- () Division Breaks
- ⊙ Camp
- Drop Point
- 🚒 Lookout
- 🚁 Helispot
- ⚓ Sling Site
- ▲ Ranch
- 🌊 Water Source
- WX Mobile Weather Unit
- 🚧 Limited Access
- 🔴 Uncontrolled Fire Edge
- ()() Ridge / Geographic Feature
- ⊗ Proposed Dozer Line
- ⊘ Completed Line
- ⊗ Completed Dozer Line
- H - H - Hand Line
- R - R - Road as Completed Line



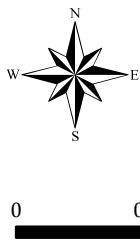
Tepee Springs Fire
 IAP 3
 ID-PAF-000192
 9/20/2015
 95,709 Acres



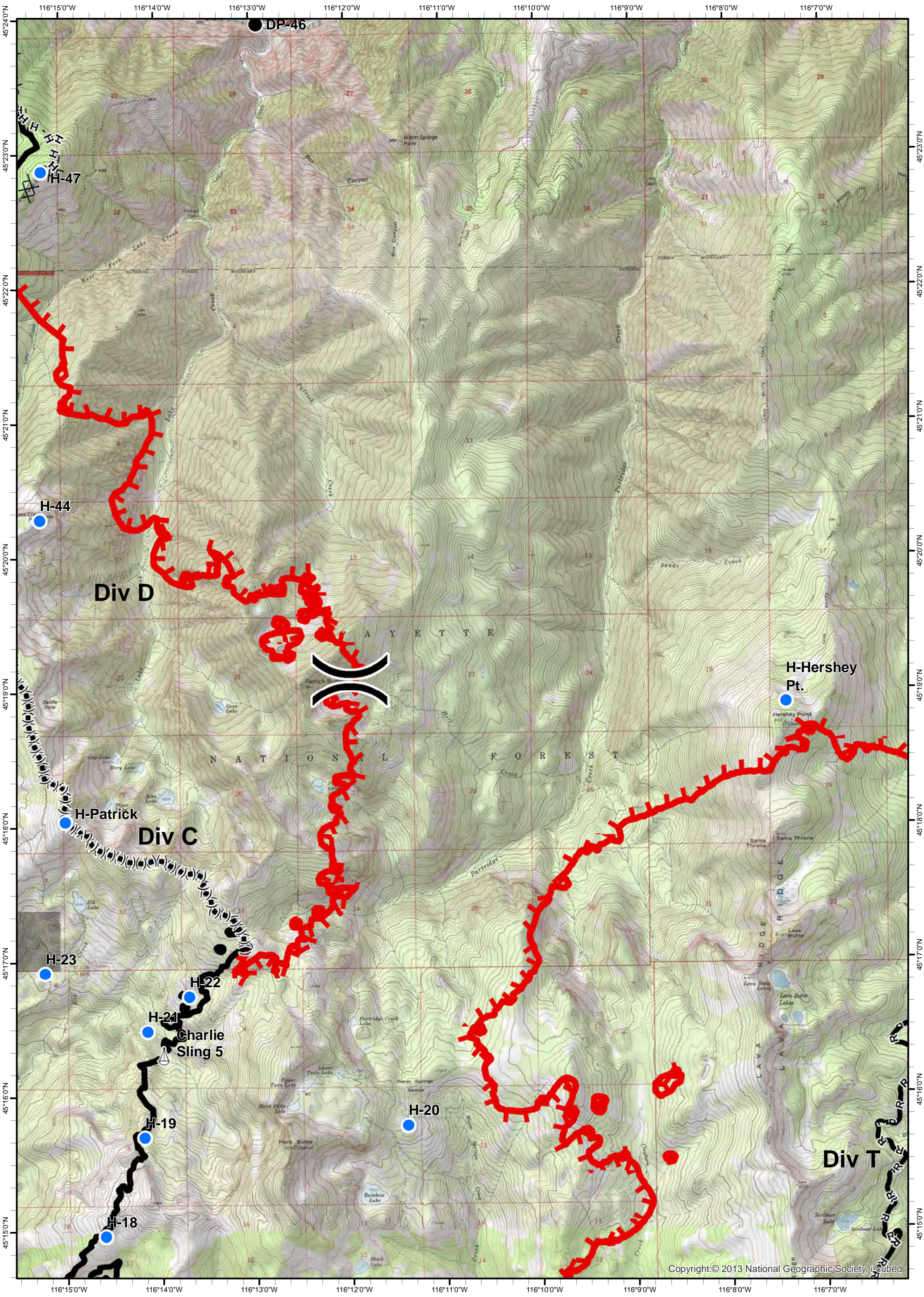
- ★ Cities/Towns
- () Division Breaks
- ⊙ Camp
- Drop Point
- 🚒 Lookout
- 📍 Helispot
- ⚙️ Sling Site
- ▲ Ranch
- 🌊 Water Source
- WX Mobile Weather Unit
- 🚧 Limited Access
- 🔴 Uncontrolled Fire Edge
- ()() Ridge / Geographic Feature
- ⊗ Proposed Dozer Line
- ▬ Completed Line
- ⊗ Completed Dozer Line
- H - H - Hand Line
- R - R - Road as Completed Line



Tepee Springs Fire
 IAP 4
 ID-PAF-000192
 9/20/2015
 95,709 Acres



- ★ Cities/Towns
- () Division Breaks
- ⊙ Camp
- Drop Point
- 🚒 Lookout
- 🚁 Helispot
- 🚢 Sling Site
- 📍 Ranch
- 🌊 Water Source
- 📶 Mobile Weather Unit
- 🚫 Limited Access
- 🔴 Uncontrolled Fire Edge
- ()() Ridge / Geographic Feature
- ⊗ Proposed Dozer Line
- ⬛ Completed Line
- ⊗⊗ Completed Dozer Line
- H - H - Hand Line
- R - R - Road as Completed Line



Tepee Springs Fire
 IAP 5
 ID-PAF-000192
 9/20/2015
 95,709 Acres



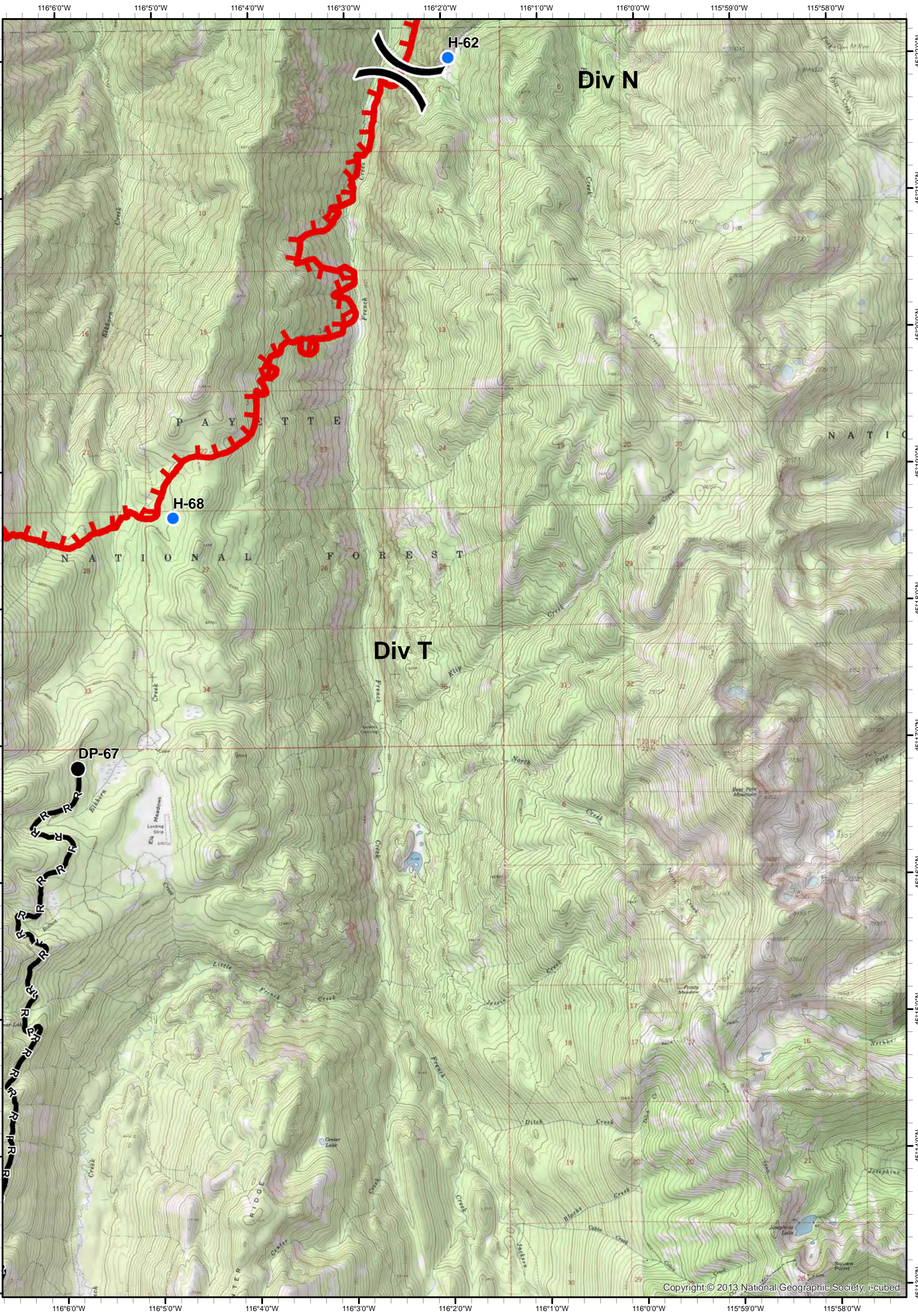
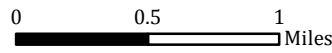
- ★ Cities/Towns
- () Division Breaks
- ⊙ Camp
- Drop Point

- 📏 Lookout
- 🚁 Helispot
- ⚓ Sling Site
- ▲ Ranch

- 🌊 Water Source
- WX Mobile Weather Unit
- 🚧 Limited Access

- 🔴 Uncontrolled Fire Edge
- ()() Ridge / Geographic Feature
- ⊗ Proposed Dozer Line
- ▬ Completed Line

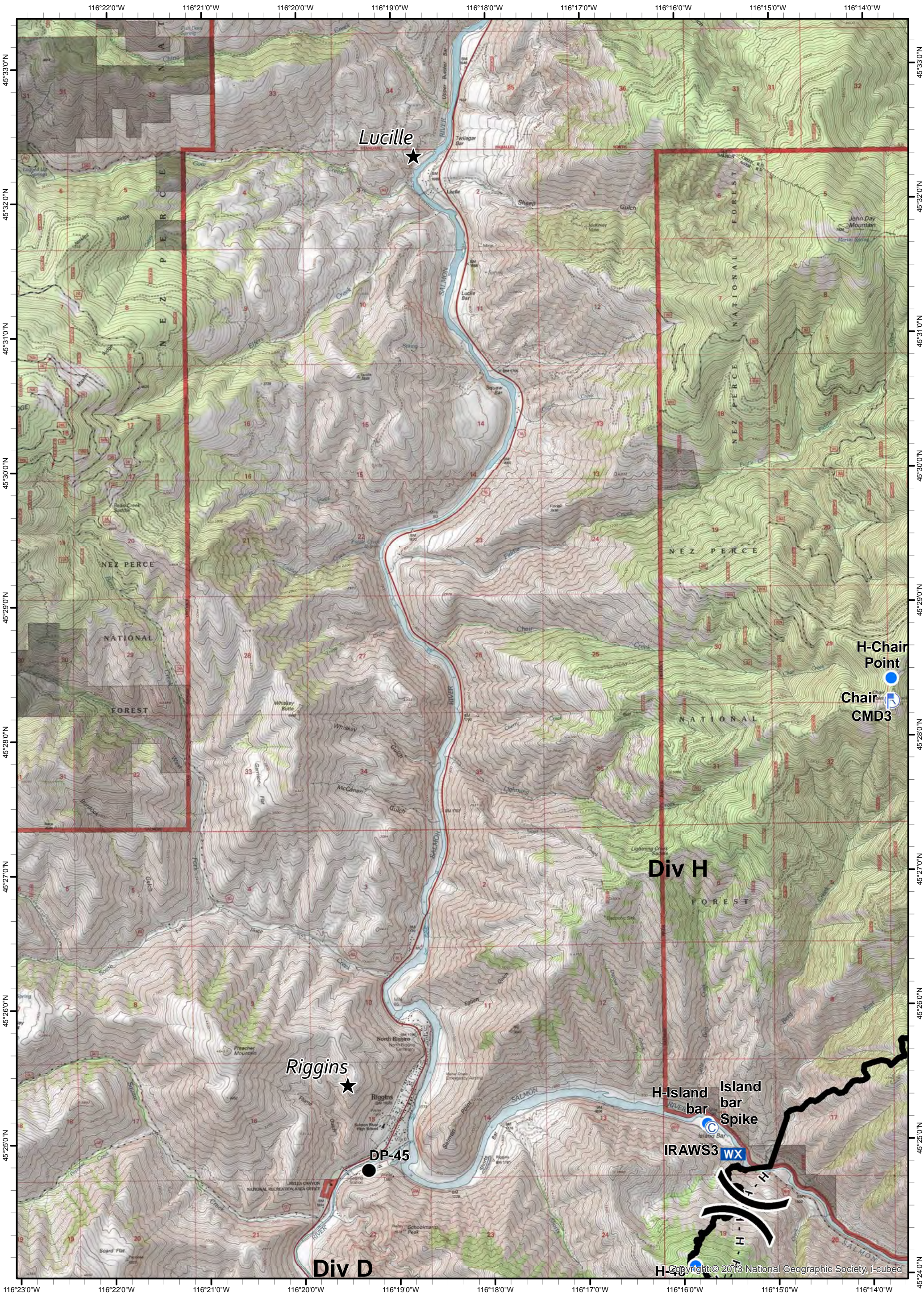
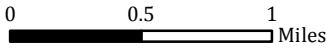
- ⊗⊗ Completed Dozer Line
- H - H - Hand Line
- R - R - Road as Completed Line



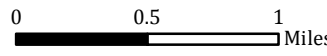
Tepee Springs Fire
 IAP 6
 ID-PAF-000192
 9/20/2015
 95,709 Acres



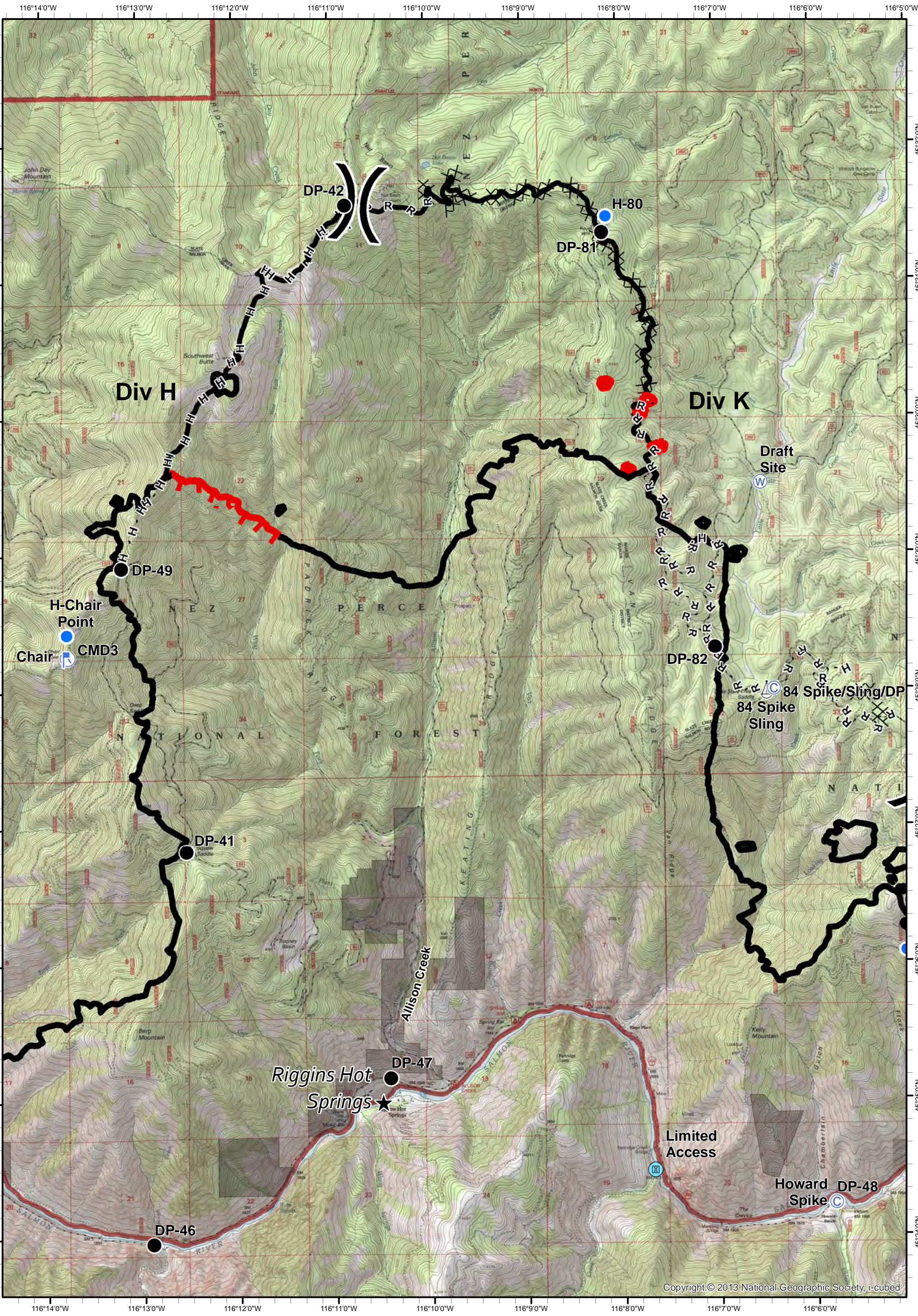
- ★ Cities/Towns
- () Division Breaks
- ⊙ Camp
- Drop Point
- 📏 Lookout
- 🚁 Helispot
- ⚓ Sling Site
- ▲ Ranch
- 🌊 Water Source
- WX Mobile Weather Unit
- 🚧 Limited Access
- 🔥 Uncontrolled Fire Edge
- () Ridge / Geographic Feature
- ⊙ Proposed Dozer Line
- ▬ Completed Line
- ⊗ Completed Dozer Line
- H - H - Hand Line
- R - R - Road as Completed Line



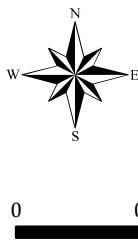
Tepee Springs Fire
IAP 7
ID-PAF-000192
9/20/2015
95,709 Acres



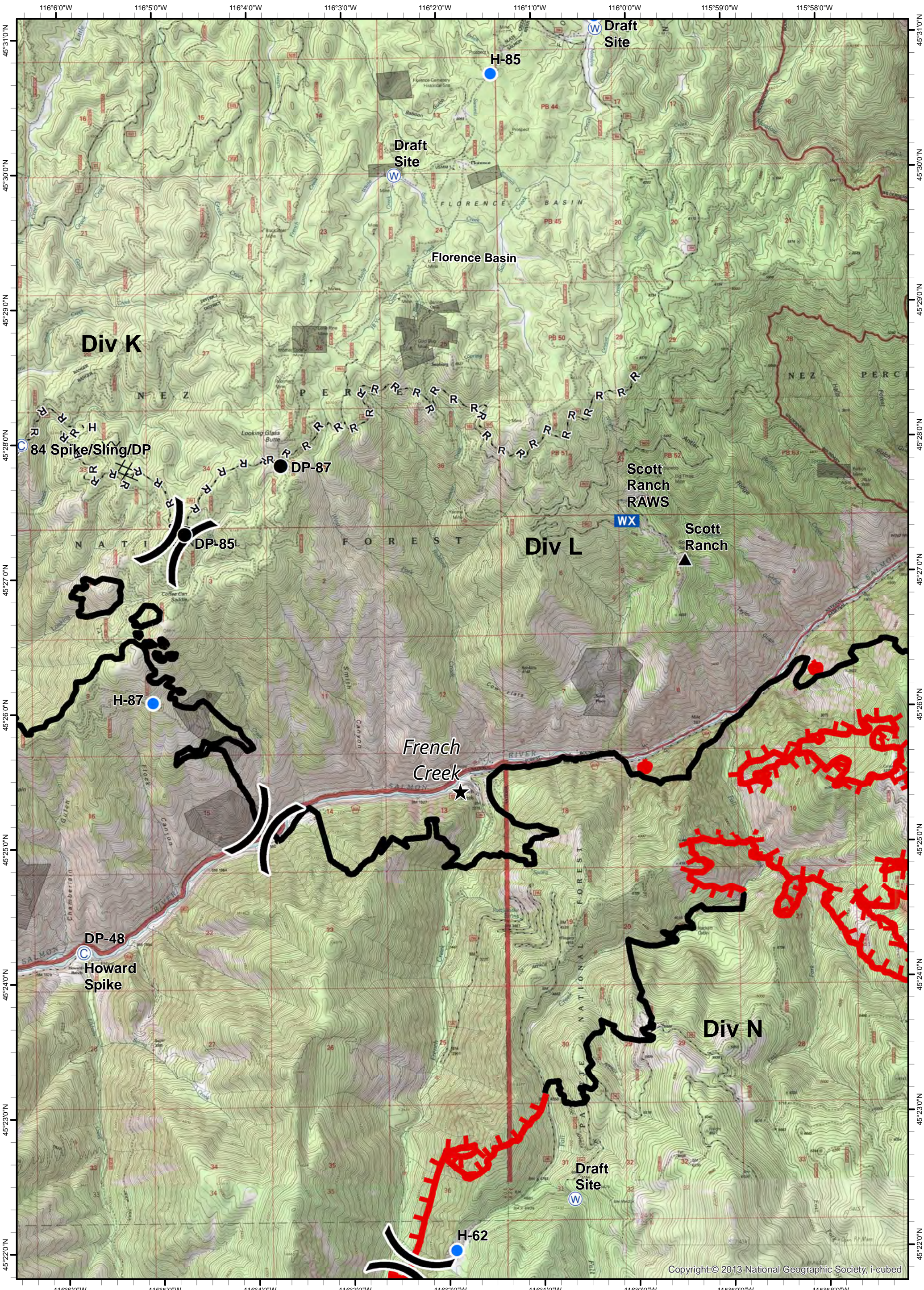
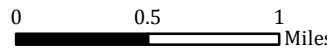
- ★ Cities/Towns
- () Division Breaks
- ⊙ Camp
- Drop Point
- ⚡ Lookout
- Helispot
- ⚓ Sling Site
- ▲ Ranch
- Ⓜ Water Source
- WX Mobile Weather Unit
- Ⓜ Limited Access
- Uncontrolled Fire Edge
- () Ridge / Geographic Feature
- ⊙ Proposed Dozer Line
- Completed Line
- ⊗ Completed Dozer Line
- H - H - Hand Line
- R - R - Road as Completed Line



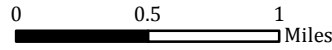
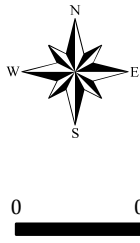
Tepee Springs Fire
 IAP 8
 ID-PAF-000192
 9/20/2015
 95,709 Acres



- ★ Cities/Towns
- () Division Breaks
- ⊙ Camp
- Drop Point
- ⚡ Lookout
- Helispot
- ⚓ Sling Site
- ▲ Ranch
- Ⓜ Water Source
- WX Mobile Weather Unit
- Ⓜ Limited Access
- Uncontrolled Fire Edge
- () () () Ridge / Geographic Feature
- ⊗ Proposed Dozer Line
- Completed Line
- ⊗ ⊗ Completed Dozer Line
- H - H - Hand Line
- R - R - Road as Completed Line



Tepee Springs Fire
IAP 9
ID-PAF-000192
9/20/2015
95,709 Acres



- ★ Cities/Towns
- () Division Breaks
- ⊙ Camp
- Drop Point
- ⚡ Lookout
- Helispot
- ⚓ Sling Site
- ▲ Ranch
- ⊙ Water Source
- WX Mobile Weather Unit
- ⊙ Limited Access
- Uncontrolled Fire Edge
- () () () Ridge / Geographic Feature
- ⊙ Proposed Dozer Line
- Completed Line
- Completed Dozer Line
- H - H - Hand Line
- R - R - Road as Completed Line

