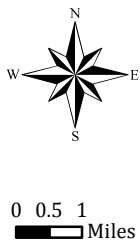
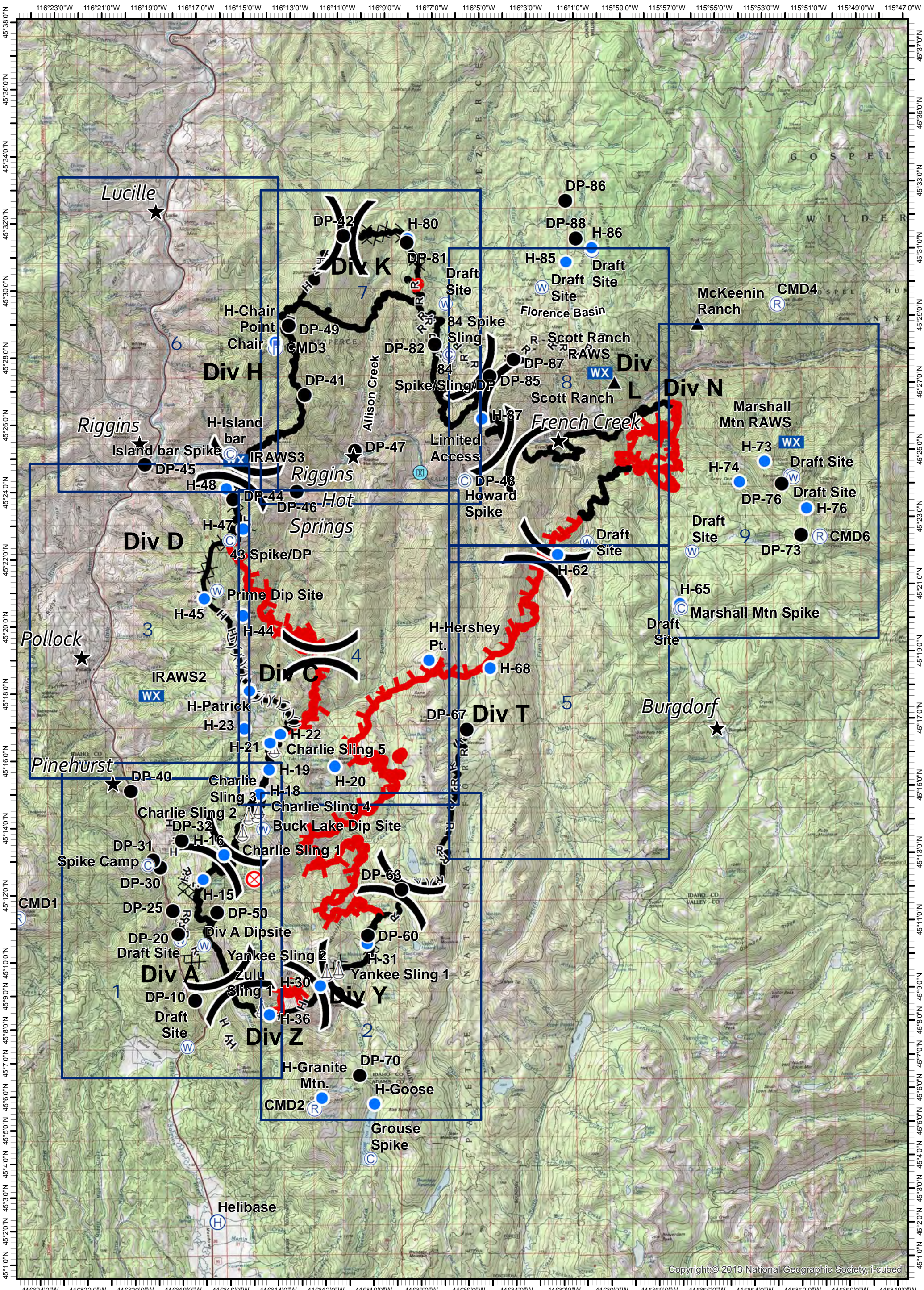


# Tepee Springs Fire IAP Overview Map

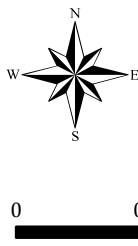
ID-PAF-000192  
9/22/2015  
95,709 Acres



- ★ Cities/Towns
- ( ) Division Breaks
- ⊙ Camp
- Drop Point
- ⚡ Lookout
- ⊙ Helispot
- ⚓ Sling Site
- ▲ Ranch
- ⊙ Water Source
- WX Mobile Weather Unit
- ⊙ Limited Access
- Uncontrolled Fire Edge
- ( ) ( ) Ridge / Geographic Feature
- ⊙ Proposed Dozer Line
- Completed Line
- ⊙ Completed Dozer Line
- H - H - Hand Line
- R - R - Road as Completed Line



Tepee Springs Fire  
 IAP 1  
 ID-PAF-000192  
 9/22/2015  
 95,709 Acres



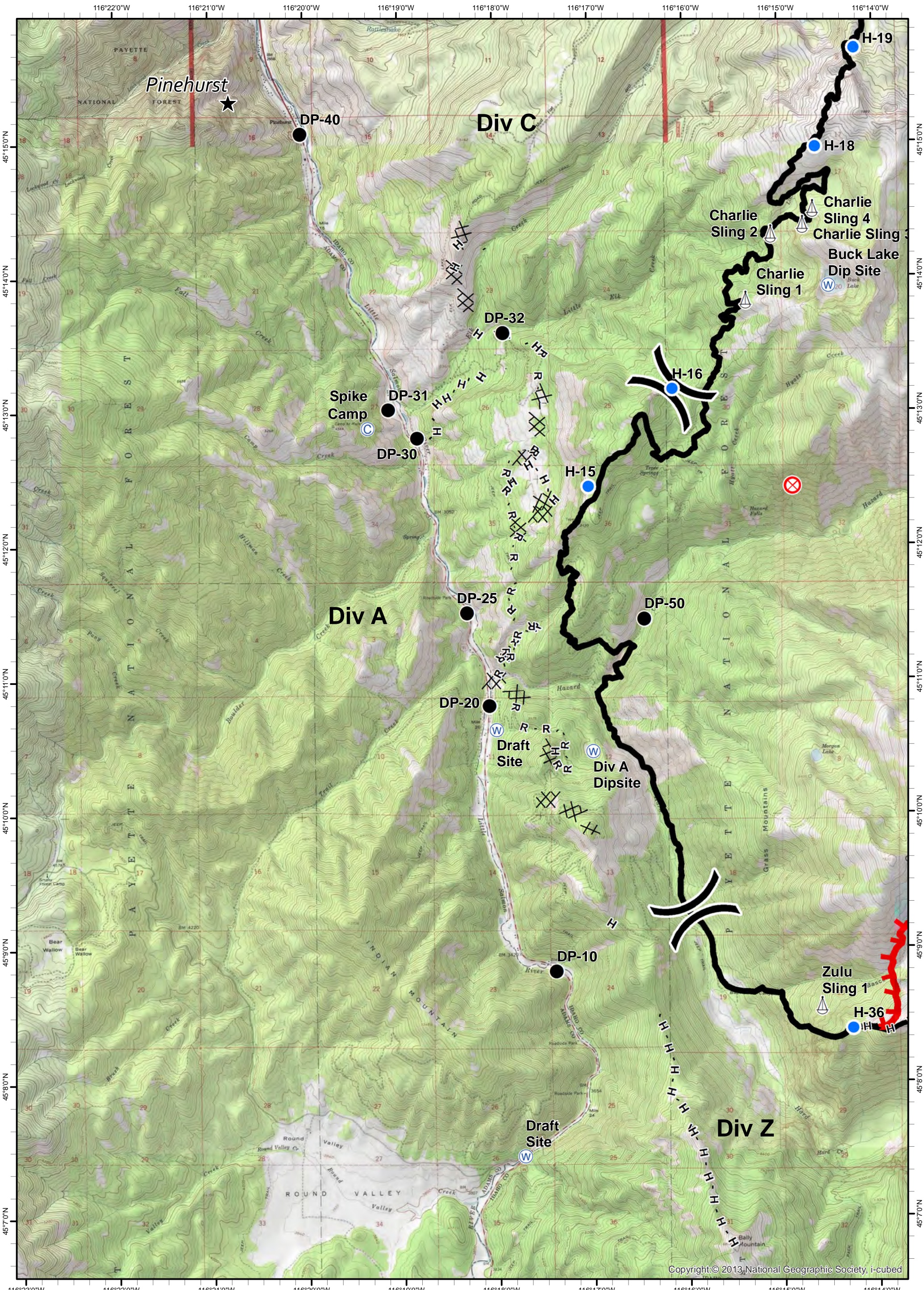
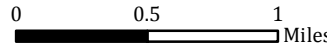
- ★ Cities/Towns
- ( ) Division Breaks
- ⊙ Camp
- Drop Point

- 🚒 Lookout
- 🚁 Helispot
- 🚢 Sling Site
- 🏠 Ranch

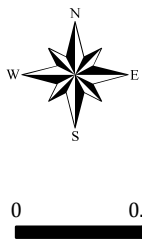
- 🌊 Water Source
- 📶 Mobile Weather Unit
- 🚧 Limited Access

- 🔥 Uncontrolled Fire Edge
- ( ) Ridge / Geographic Feature
- ⊗ Proposed Dozer Line
- Completed Line

- ⊗ Completed Dozer Line
- H - H - Hand Line
- R - R - Road as Completed Line



**Tepee Springs Fire**  
**IAP 2**  
**ID-PAF-000192**  
**9/22/2015**  
**95,709 Acres**



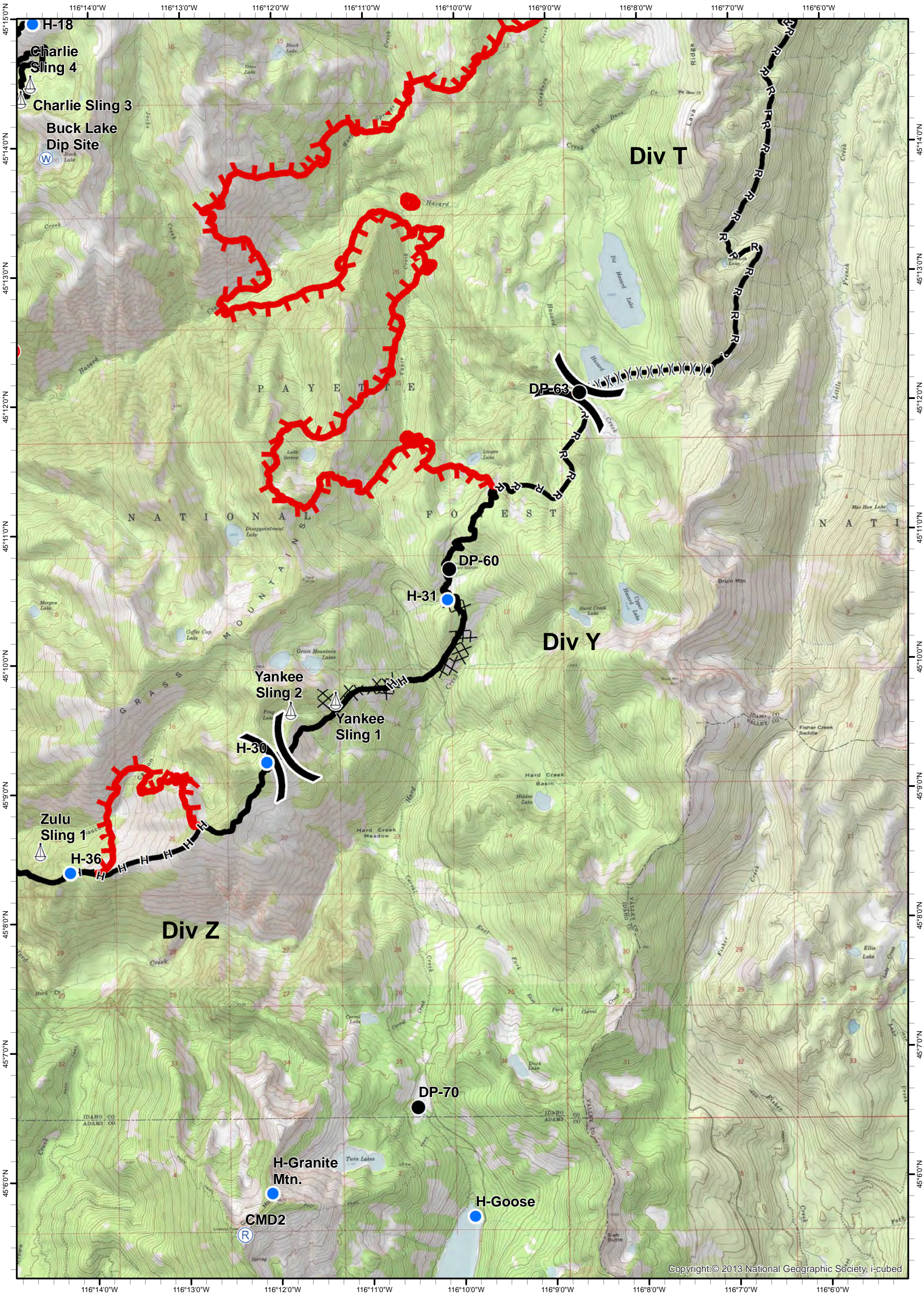
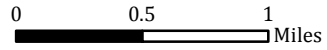
- ★ Cities/Towns
- ( ) Division Breaks
- ⊙ Camp
- Drop Point

- 🚒 Lookout
- 🚁 Helispot
- ⚓ Sling Site
- ▲ Ranch

- 🌊 Water Source
- WX Mobile Weather Unit
- Ⓜ Limited Access

- 🔥 Uncontrolled Fire Edge
- ( )( ) Ridge / Geographic Feature
- ⊗ Proposed Dozer Line
- Completed Line

- ⊗ Completed Dozer Line
- H - H - Hand Line
- R - R - Road as Completed Line



**Tepee Springs Fire**  
**IAP 3**  
**ID-PAF-000192**  
**9/22/2015**  
**95,709 Acres**



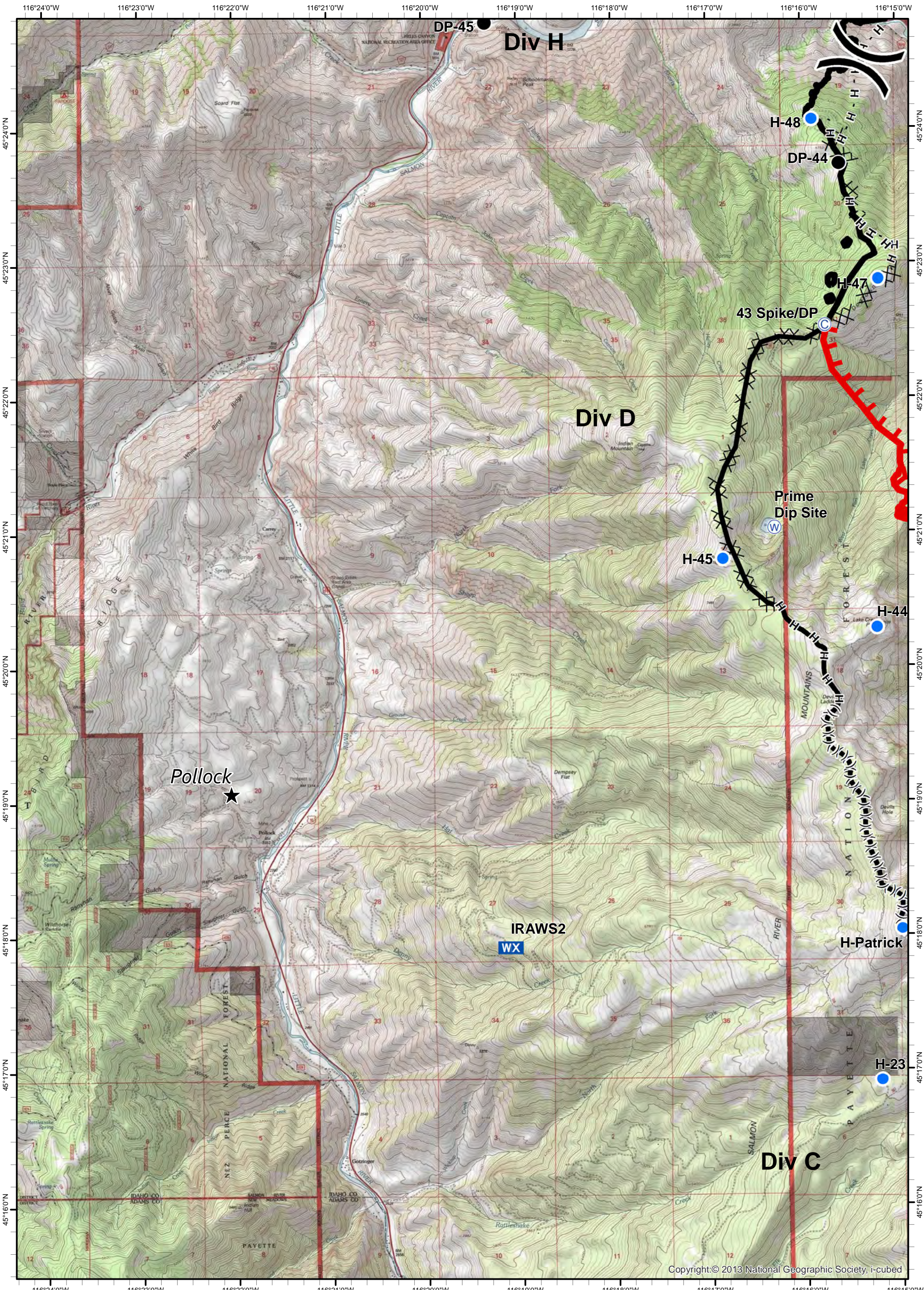
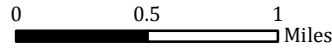
- ★ Cities/Towns
- ( ) Division Breaks
- ⊙ Camp
- Drop Point

- 🚒 Lookout
- 🚁 Helispot
- 🚢 Sling Site
- 🏠 Ranch

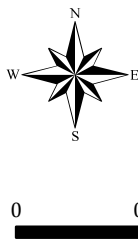
- 🌊 Water Source
- 📶 WX Mobile Weather Unit
- 🚧 Limited Access

- 🔥 Uncontrolled Fire Edge
- ( ) ( ) ( ) Ridge / Geographic Feature
- ⊗ Proposed Dozer Line
- Completed Line

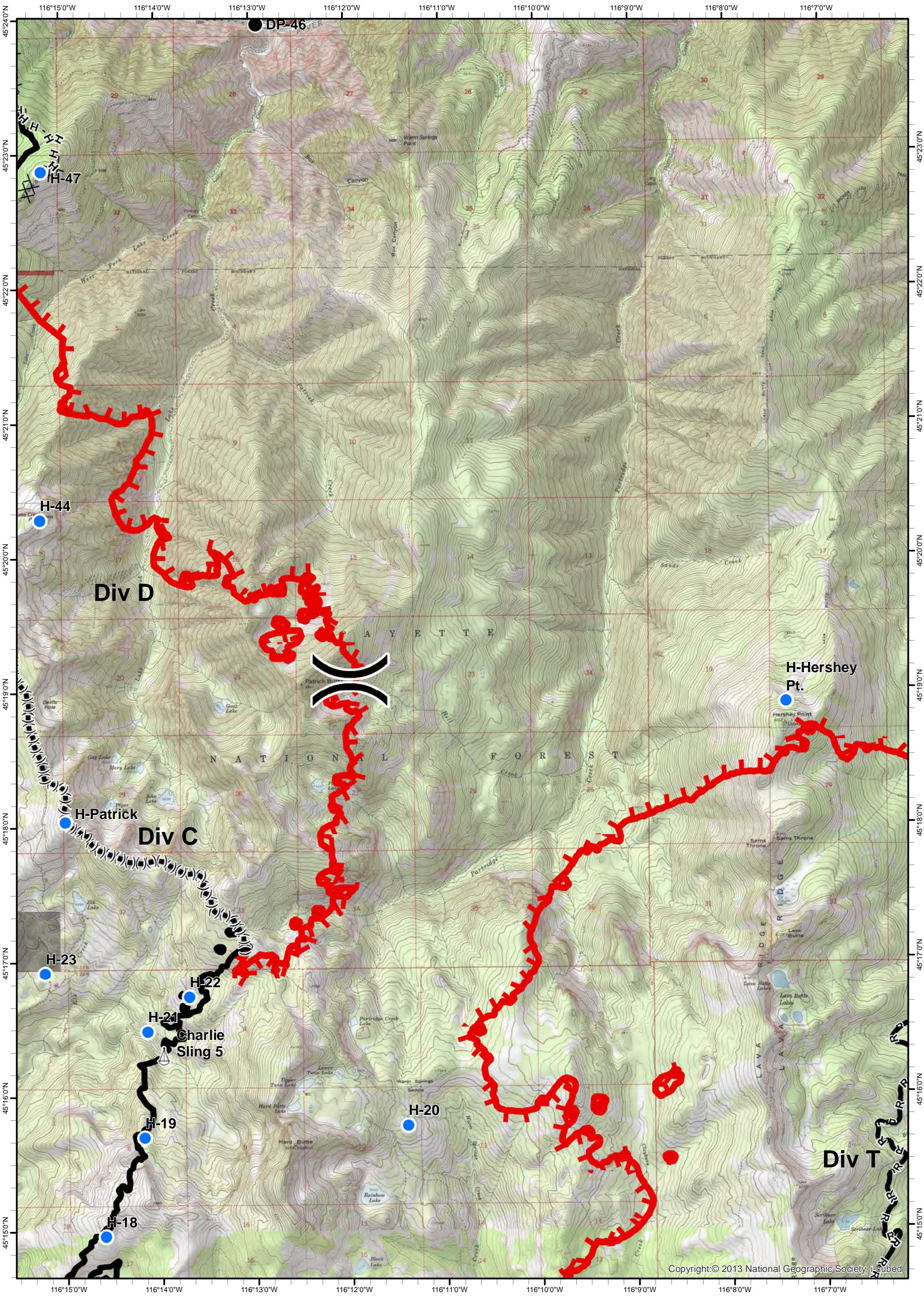
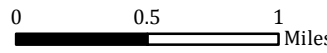
- ⊗ ⊗ Completed Dozer Line
- H - H - Hand Line
- R - R - Road as Completed Line



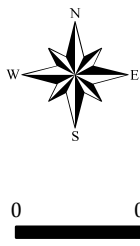
Tepee Springs Fire  
 IAP 4  
 ID-PAF-000192  
 9/22/2015  
 95,709 Acres



- ★ Cities/Towns
- ( ) Division Breaks
- ⊙ Camp
- Drop Point
- 📏 Lookout
- 📍 Helispot
- 🚰 Sling Site
- 🏠 Ranch
- 🌊 Water Source
- 📶 Mobile Weather Unit
- 🚫 Limited Access
- 🔥 Uncontrolled Fire Edge
- ( )( ) Ridge / Geographic Feature
- ⊗ Proposed Dozer Line
- ⊘ Completed Line
- ⊗⊗ Completed Dozer Line
- H - H - Hand Line
- R - R - Road as Completed Line



Tepee Springs Fire  
 IAP 5  
 ID-PAF-000192  
 9/22/2015  
 95,709 Acres



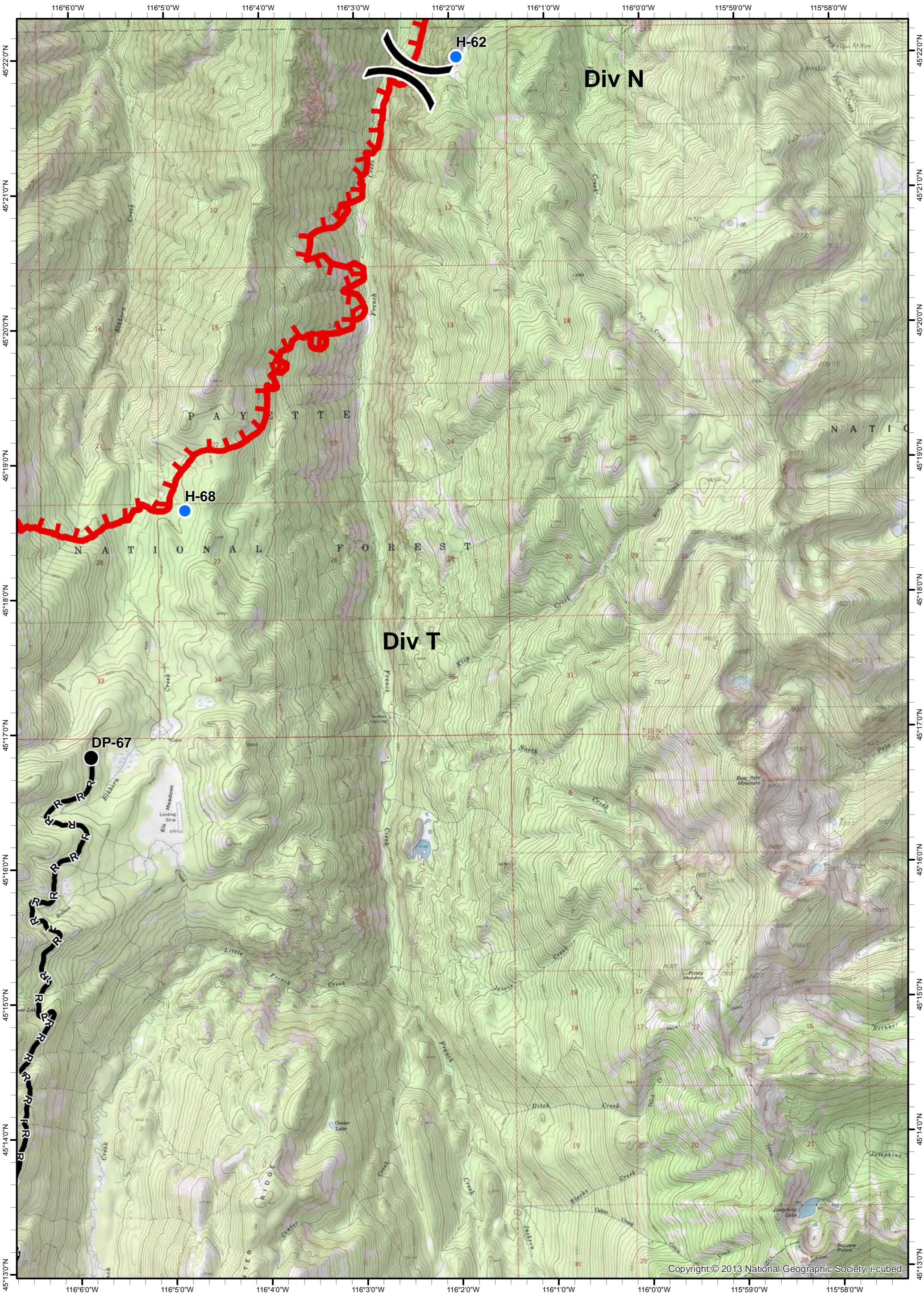
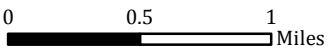
- ★ Cities/Towns
- ( ) Division Breaks
- ⊙ Camp
- Drop Point

- 📏 Lookout
- 🚁 Helispot
- 🚢 Sling Site
- 🏠 Ranch

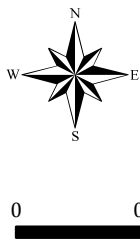
- 🌊 Water Source
- 📶 Mobile Weather Unit
- 🚫 Limited Access

- 🔴 Uncontrolled Fire Edge
- ( )( ) Ridge / Geographic Feature
- ⊗ Proposed Dozer Line
- ▬ Completed Line

- ⊗⊗ Completed Dozer Line
- H - H - Hand Line
- R - R - Road as Completed Line



Tepee Springs Fire  
 IAP 6  
 ID-PAF-000192  
 9/22/2015  
 95,709 Acres



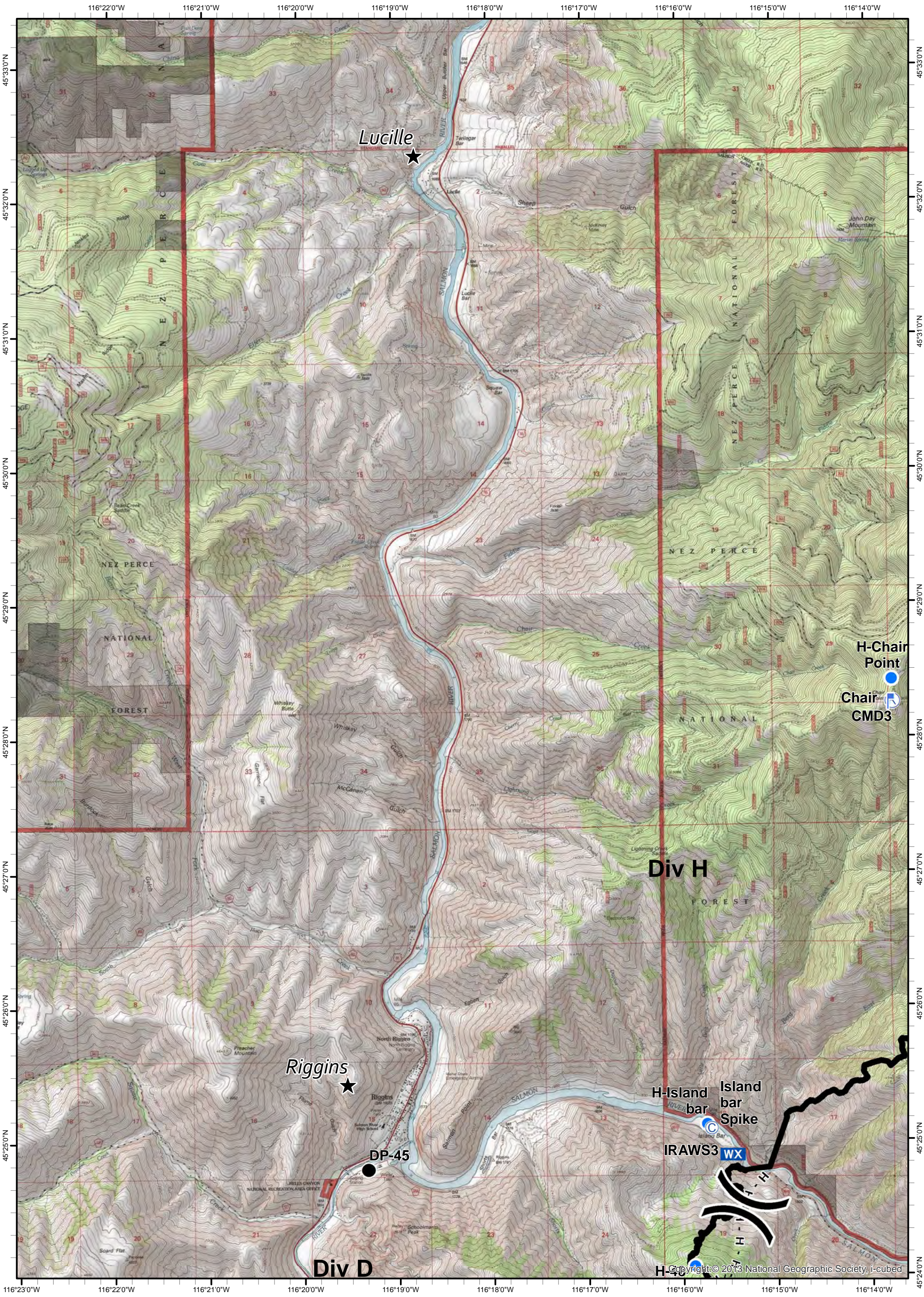
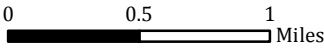
- ★ Cities/Towns
- ( ) Division Breaks
- ⊙ Camp
- Drop Point

- 📍 Lookout
- 🚁 Helispot
- ⚓ Sling Site
- ▲ Ranch

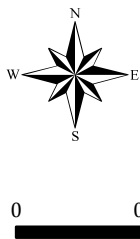
- 🌊 Water Source
- 📶 Mobile Weather Unit
- 🚫 Limited Access

- 🔥 Uncontrolled Fire Edge
- ( ) ( ) ( ) Ridge / Geographic Feature
- ⊗ Proposed Dozer Line
- ▬ Completed Line

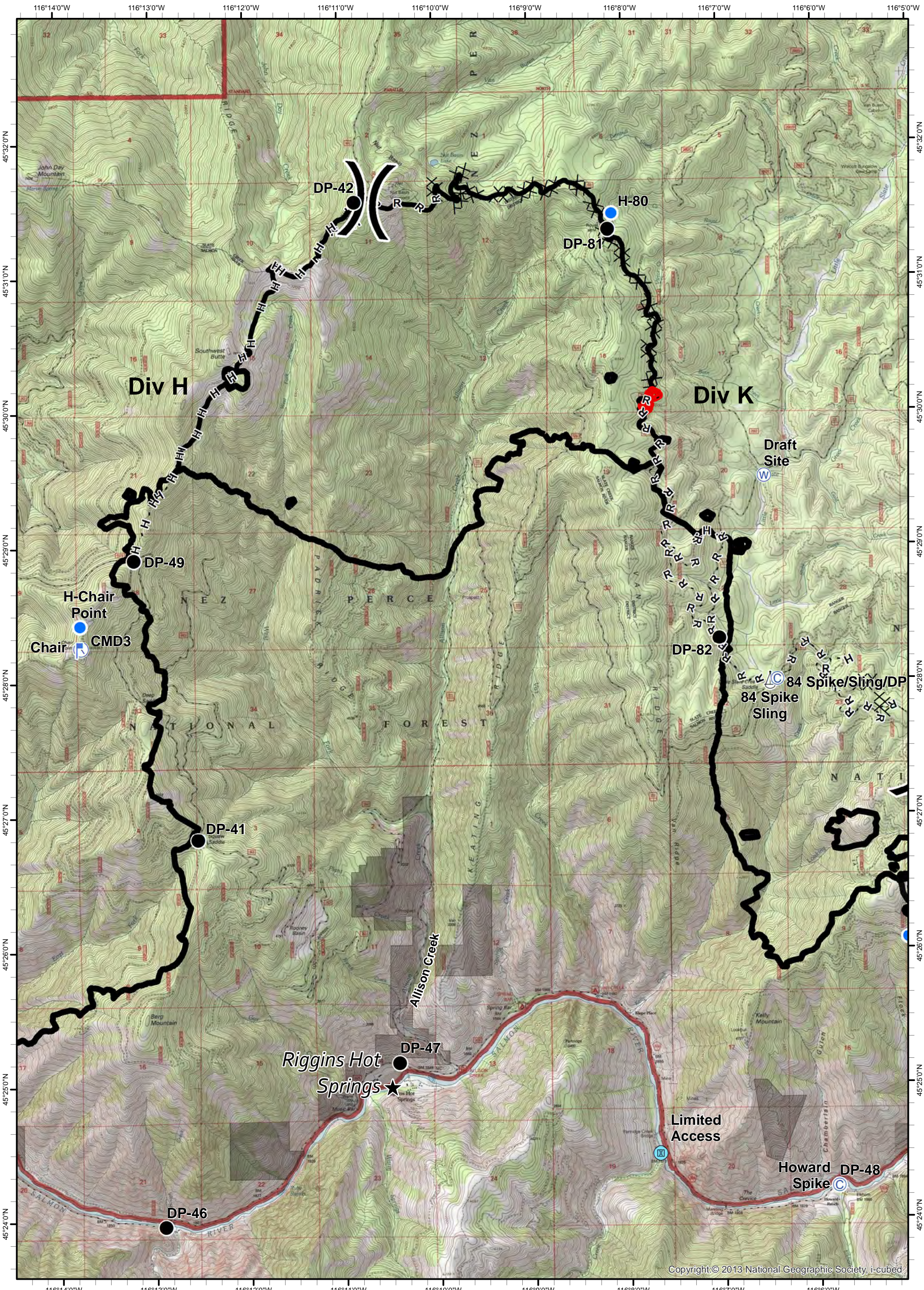
- ⊗ ⊗ Completed Dozer Line
- H - H - Hand Line
- R - R - Road as Completed Line



**Tepee Springs Fire**  
**IAP 7**  
**ID-PAF-000192**  
**9/22/2015**  
**95,709 Acres**

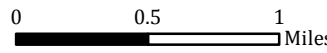
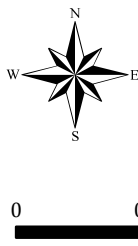


- ★ Cities/Towns
- ( ) Division Breaks
- ⊙ Camp
- Drop Point
- ⚓ Lookout
- Helispot
- ⚓ Sling Site
- ▲ Ranch
- ⊙ Water Source
- WX Mobile Weather Unit
- ⊙ Limited Access
- Uncontrolled Fire Edge
- ( ) ( ) ( ) Ridge / Geographic Feature
- ⊙ Proposed Dozer Line
- Completed Line
- ⊗ ⊗ Completed Dozer Line
- H - H - Hand Line
- R - R - Road as Completed Line

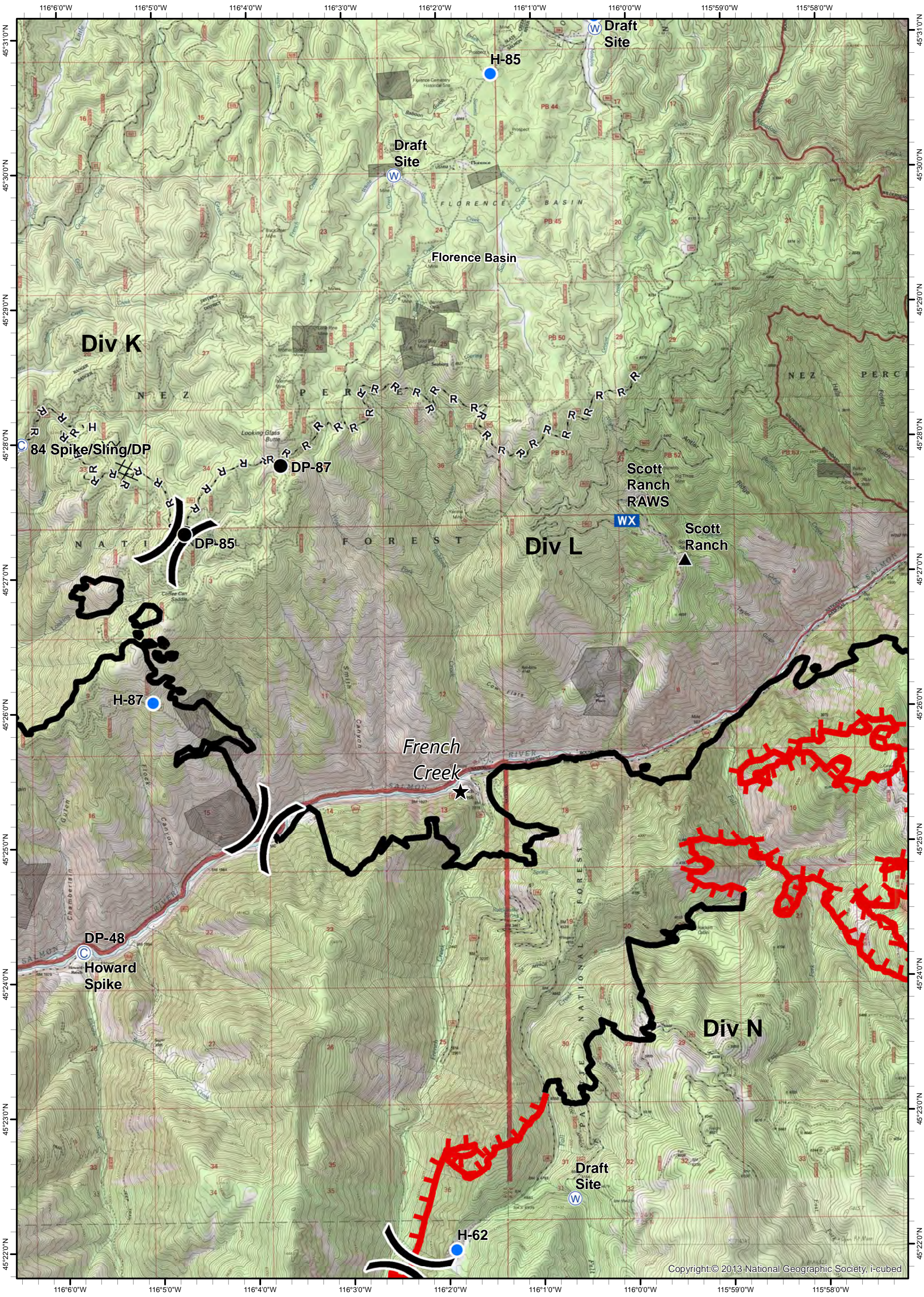




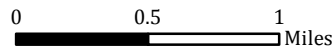
Tepee Springs Fire  
 IAP 8  
 ID-PAF-000192  
 9/22/2015  
 95,709 Acres



- ★ Cities/Towns
- ( ) Division Breaks
- ⊙ Camp
- Drop Point
- ⚡ Lookout
- Helispot
- ⚓ Sling Site
- ▲ Ranch
- Ⓜ Water Source
- WX Mobile Weather Unit
- Ⓜ Limited Access
- Uncontrolled Fire Edge
- ( )( ) Ridge / Geographic Feature
- Proposed Dozer Line
- Completed Line
- Completed Dozer Line
- H - H - Hand Line
- R - R - Road as Completed Line



Tepee Springs Fire  
 IAP 9  
 ID-PAF-000192  
 9/22/2015  
 95,709 Acres



- ★ Cities/Towns
- ( ) Division Breaks
- ⊙ Camp
- Drop Point
- ⬮ Lookout
- Helispot
- ⚓ Sling Site
- ▲ Ranch
- ⊙ Water Source
- WX Mobile Weather Unit
- ⊙ Limited Access
- Uncontrolled Fire Edge
- ( )( ) Ridge / Geographic Feature
- Proposed Dozer Line
- Completed Line
- Completed Dozer Line
- H - H - Hand Line
- R - R - Road as Completed Line

