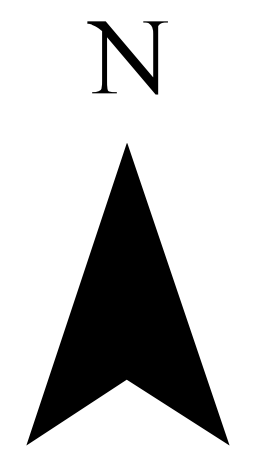


Operations

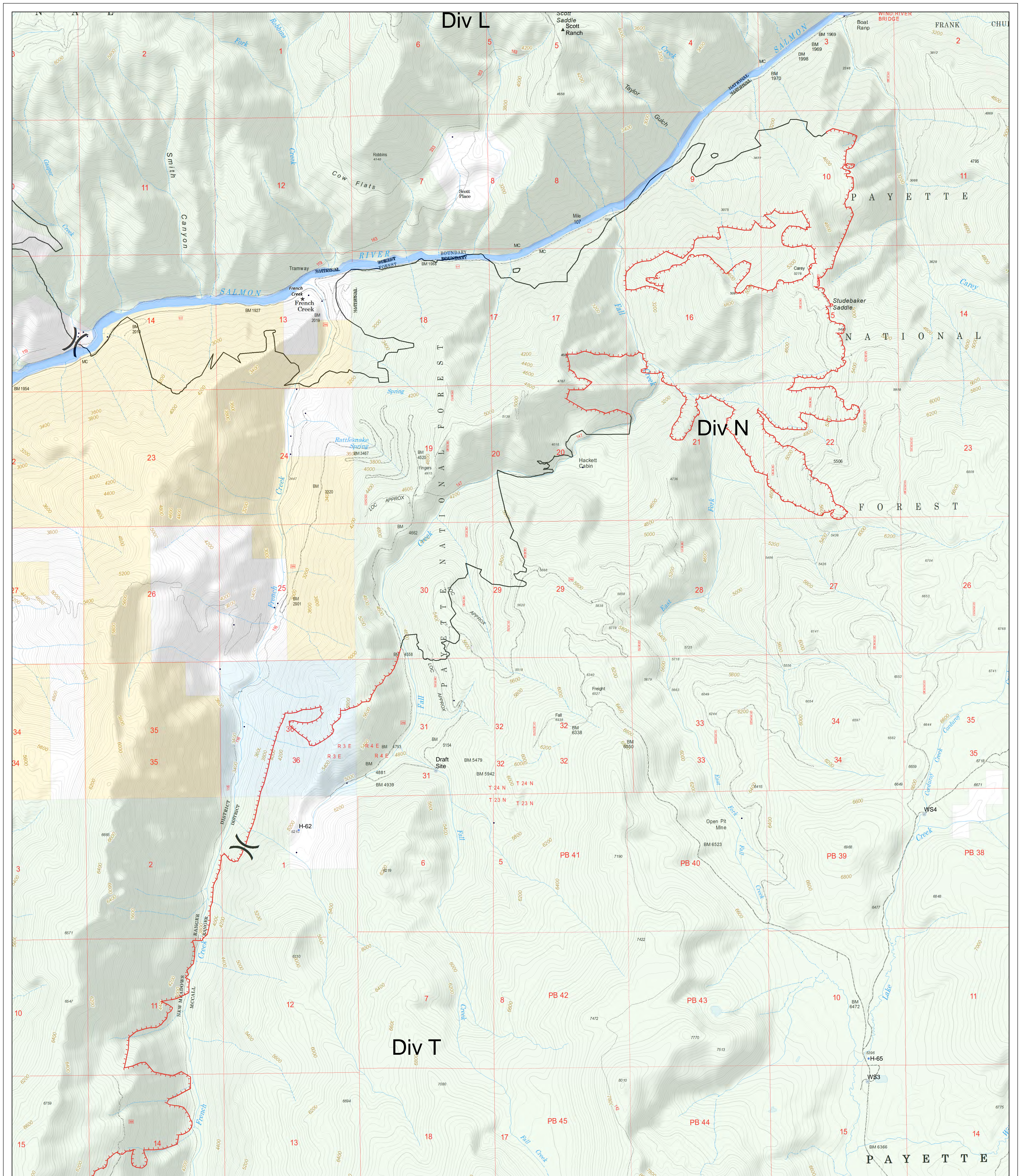
Tepee Springs
 95,709 Acres
 ID-PAF-000192
 9/23/2015 1200
 Perimeter 9/14/2015 at 0043 hrs

- | | | |
|------------------|-------------------------|------------------------------|
| • Structures | ▣ Incident Command Post | — Uncontrolled Fire Edge |
| FirePoint | ▣ Lookout | ▬ Ridge / Geographic Feature |
| ⊕ Limited Access | ▣ Mobile Weather Unit | ▬ Completed Dozer Line |
| ⊙ Camp | Ⓜ Repeater | ▬ Completed Line |
| ● Drop Point | Ⓜ Sling Site | ⋯ Hand Line |
| ⊕ Helibase | Ⓜ Water Source | ⋯ Road as Completed Line |
| • Helispot | ▲ Ranch | |

Map 1 Div D



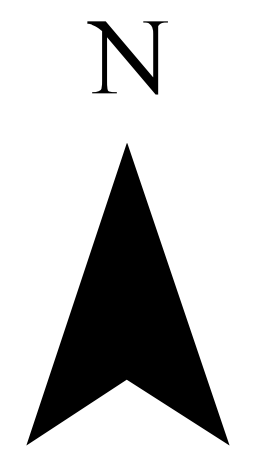
OPERATIONS



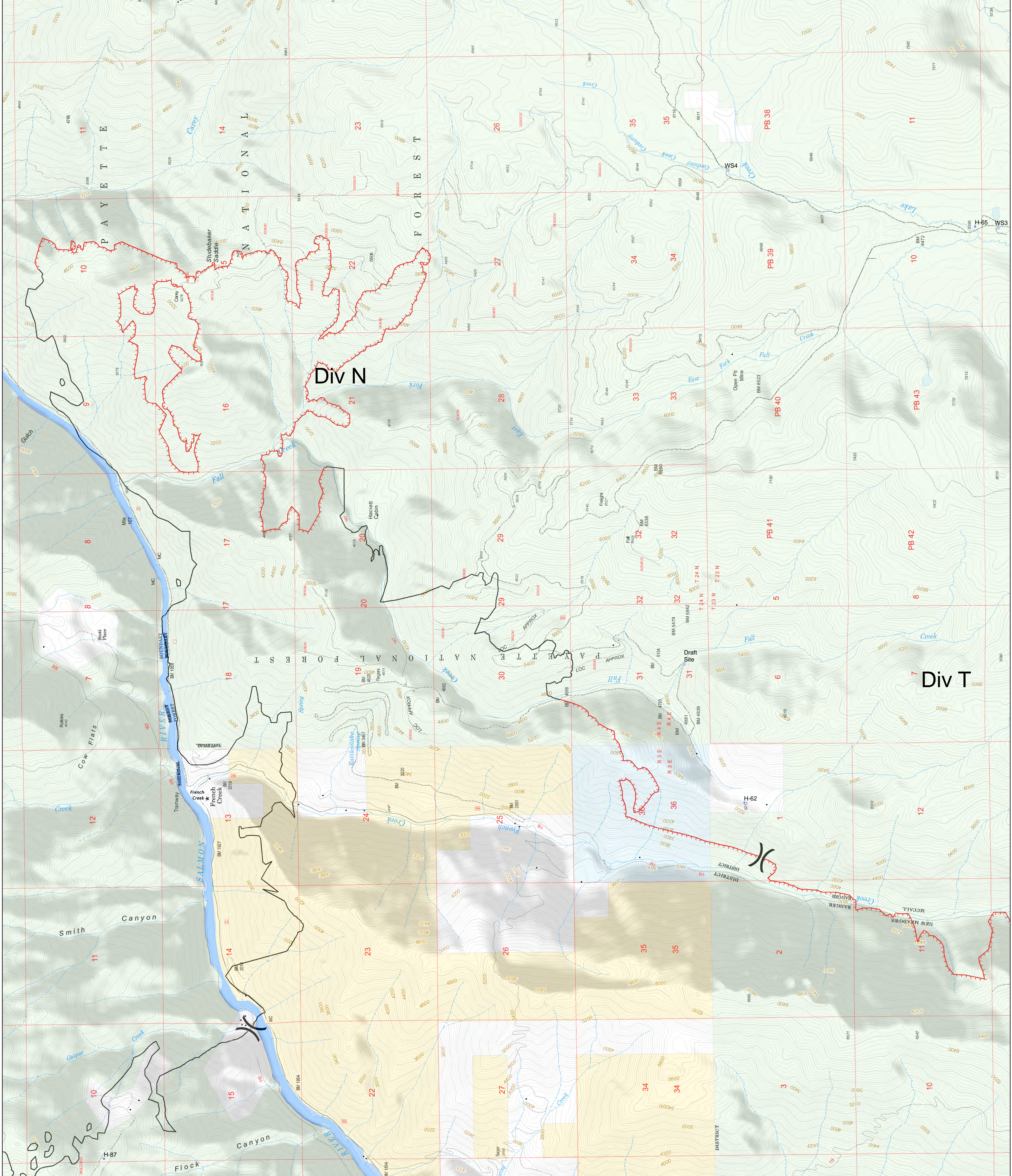
Operations
Tepee Springs
 95,709 Acres
 ID-PAF-000192
 9/23/2015 1200
 Perimeter 9/14/2015 at 0043 hrs

- | | | |
|------------------|-------------------------|------------------------------|
| • Structures | ▣ Incident Command Post | — Uncontrolled Fire Edge |
| FirePoint | ▣ Lookout | ▬ Ridge / Geographic Feature |
| ⊕ Limited Access | ▣ Mobile Weather Unit | ▬ Completed Dozer Line |
| ⊙ Camp | Ⓜ Repeater | ▬ Completed Line |
| ● Drop Point | Ⓜ Sling Site | ⋯ Hand Line |
| ⊕ Helibase | Ⓜ Water Source | ⋯ Road as Completed Line |
| • Helispot | ▲ Ranch | |

Map 2 Div N



OPERATIONS



Operations
 Tepee Springs
 95,709 Acres
 ID-PAF-000192
 9/23/2015 1200
 Perimeter 9/14/2015 at 0043 hrs

- Structures
- ▣ Incident Command Post
- ▣ Limited Access
- ▣ Camp
- Drop Point
- ⊕ Helibase
- Helispot
- ▣ FirePoint
- ▣ Mobile Weather Unit
- Ⓜ Repeater
- Ⓜ Sling Site
- Ⓜ Water Source
- ▲ Ranch
- ▬ Uncontrolled Fire Edge
- ▬ Ridge / Geographic Feature
- ▬ Completed Dozer Line
- ▬ Completed Line
- ▬ Hand Line
- ▬ Road as Completed Line

Map 3 Div N



OPERATIONS