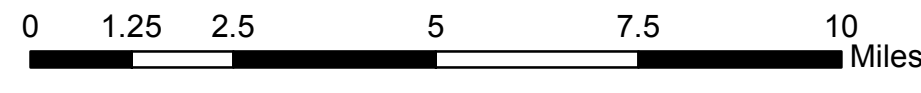
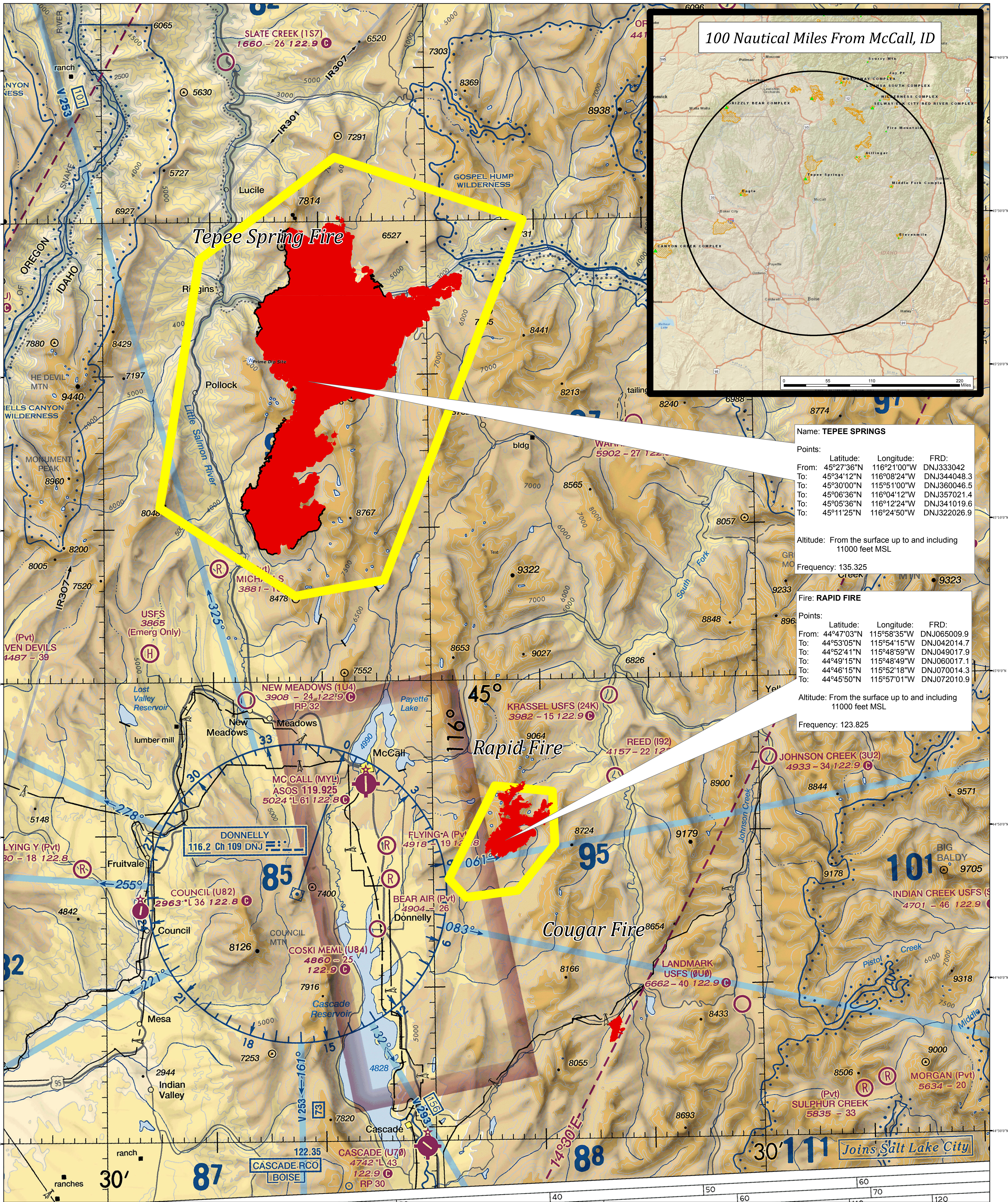


Tepee Springs Fire Area TFR 9/9/2015



- TFR Boundary
- Water Source
- Uncontrolled Fire Edge
- Completed Line
- Fire Polygon



100 Nautical Miles From McCall, ID

Name: **TEPEE SPRINGS**

Points:	Latitude:	Longitude:	FRD:
From:	45°27'36"N	116°21'00"W	DNJ333042
To:	45°34'12"N	116°08'24"W	DNJ344048.3
To:	45°30'00"N	115°51'00"W	DNJ360046.5
To:	45°08'36"N	116°04'12"W	DNJ357021.4
To:	45°05'36"N	116°12'24"W	DNJ341019.6
To:	45°11'25"N	116°24'50"W	DNJ322026.9

Altitude: From the surface up to and including 11000 feet MSL

Frequency: 135.325

Fire: **RAPID FIRE**

Points:	Latitude:	Longitude:	FRD:
From:	44°47'03"N	115°58'35"W	DNJ065009.9
To:	44°53'05"N	115°54'15"W	DNJ042014.7
To:	44°52'41"N	115°48'59"W	DNJ049017.9
To:	44°49'15"N	115°48'49"W	DNJ060017.1
To:	44°46'15"N	115°52'18"W	DNJ070014.3
To:	44°45'50"N	115°57'01"W	DNJ072010.9

Altitude: From the surface up to and including 11000 feet MSL

Frequency: 123.825

Joins Salt Lake City