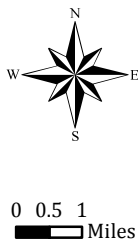
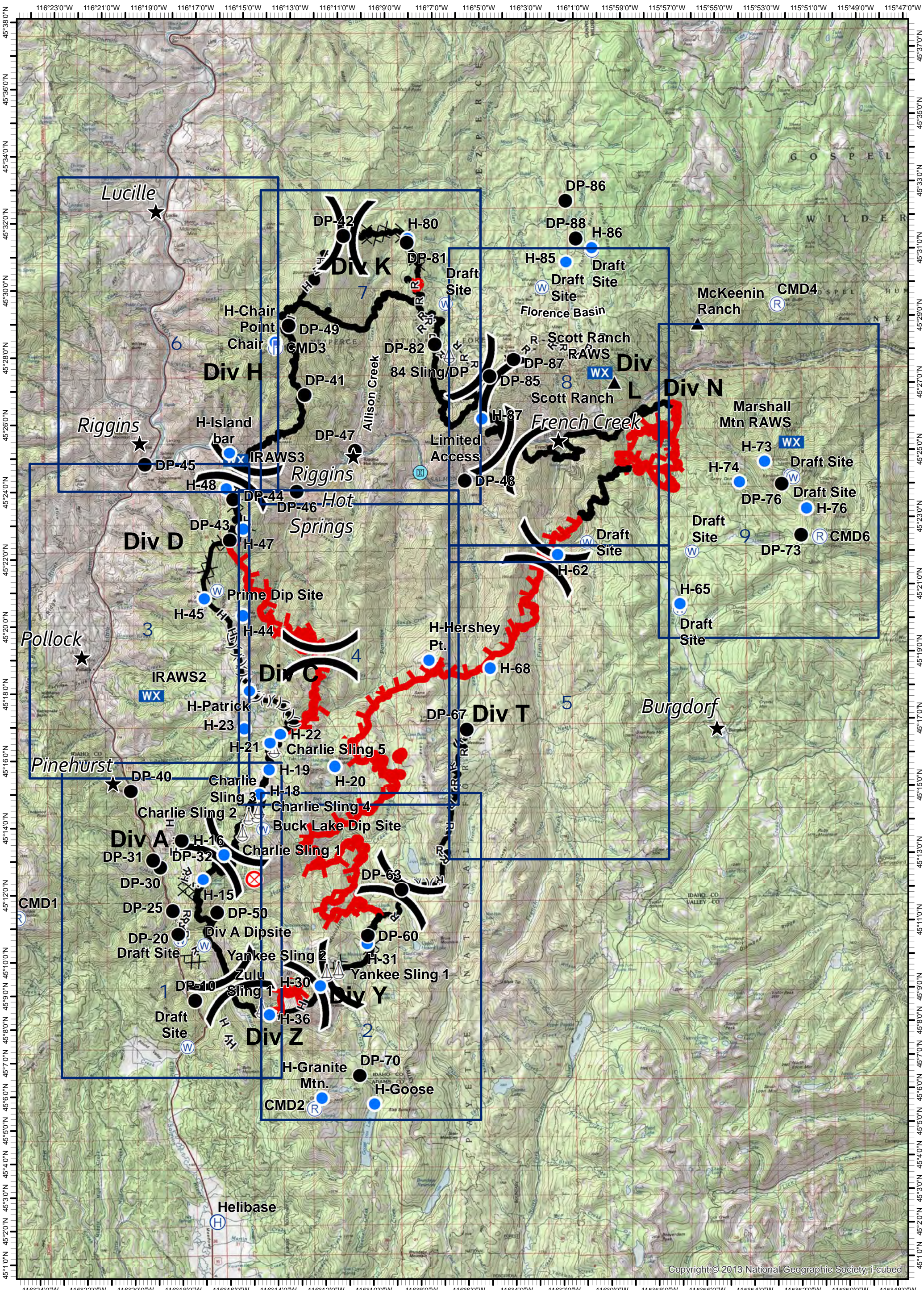


Tepee Springs Fire IAP Overview Map

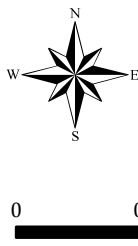
ID-PAF-000192
9/23/2015
95,709 Acres



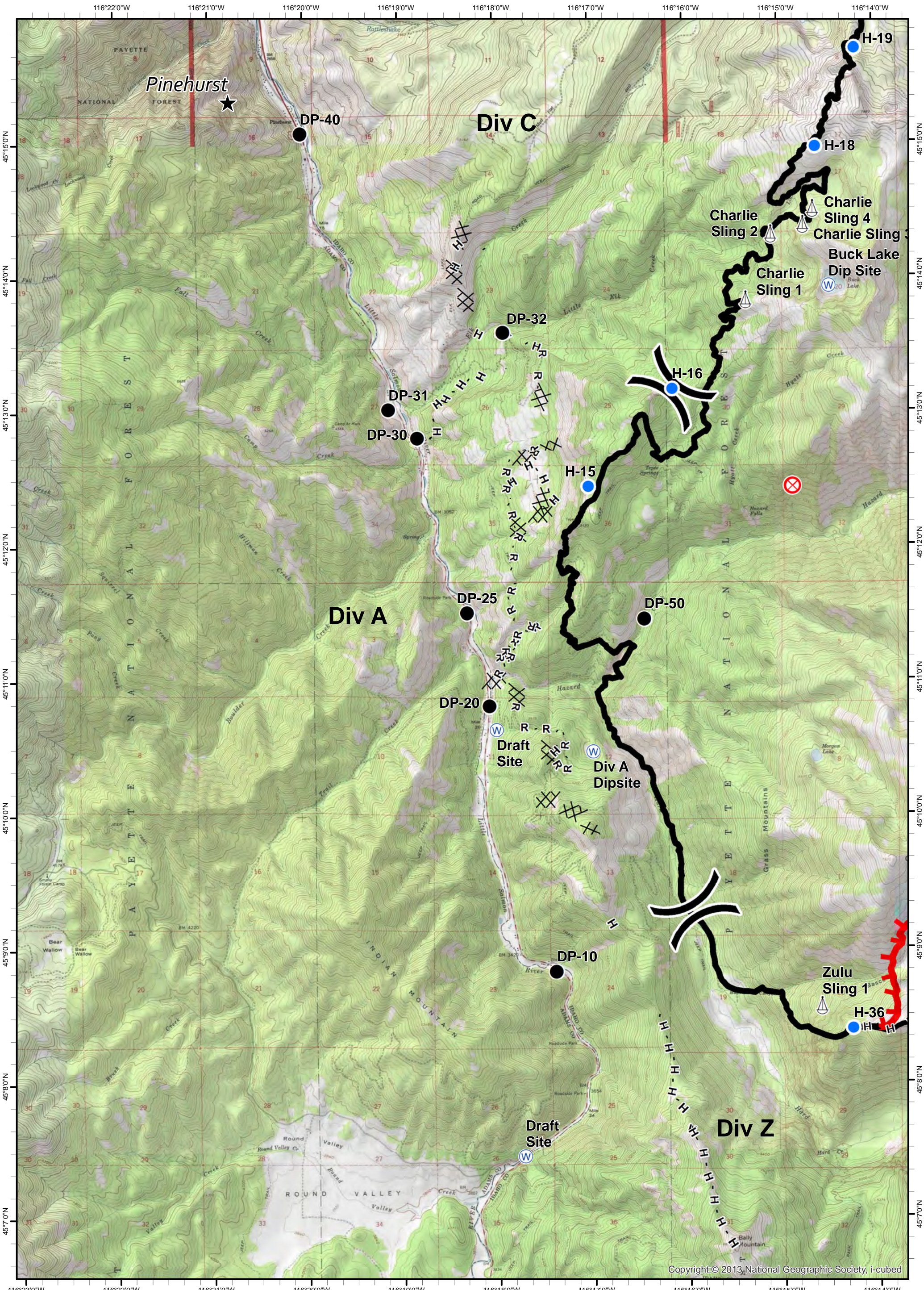
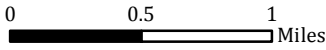
- ★ Cities/Towns
- () Division Breaks
- ⊙ Camp
- Drop Point
- ⚡ Lookout
- ⊙ Helispot
- ⚓ Sling Site
- ▲ Ranch
- ⊙ Water Source
- WX Mobile Weather Unit
- ⊙ Limited Access
- Uncontrolled Fire Edge
- () () Ridge / Geographic Feature
- ⊙ Proposed Dozer Line
- Completed Line
- Completed Dozer Line
- H - H - Hand Line
- R - R - Road as Completed Line



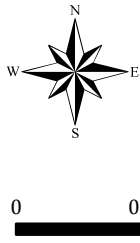
Tepee Springs Fire
 IAP 1
 ID-PAF-000192
 9/23/2015
 95,709 Acres



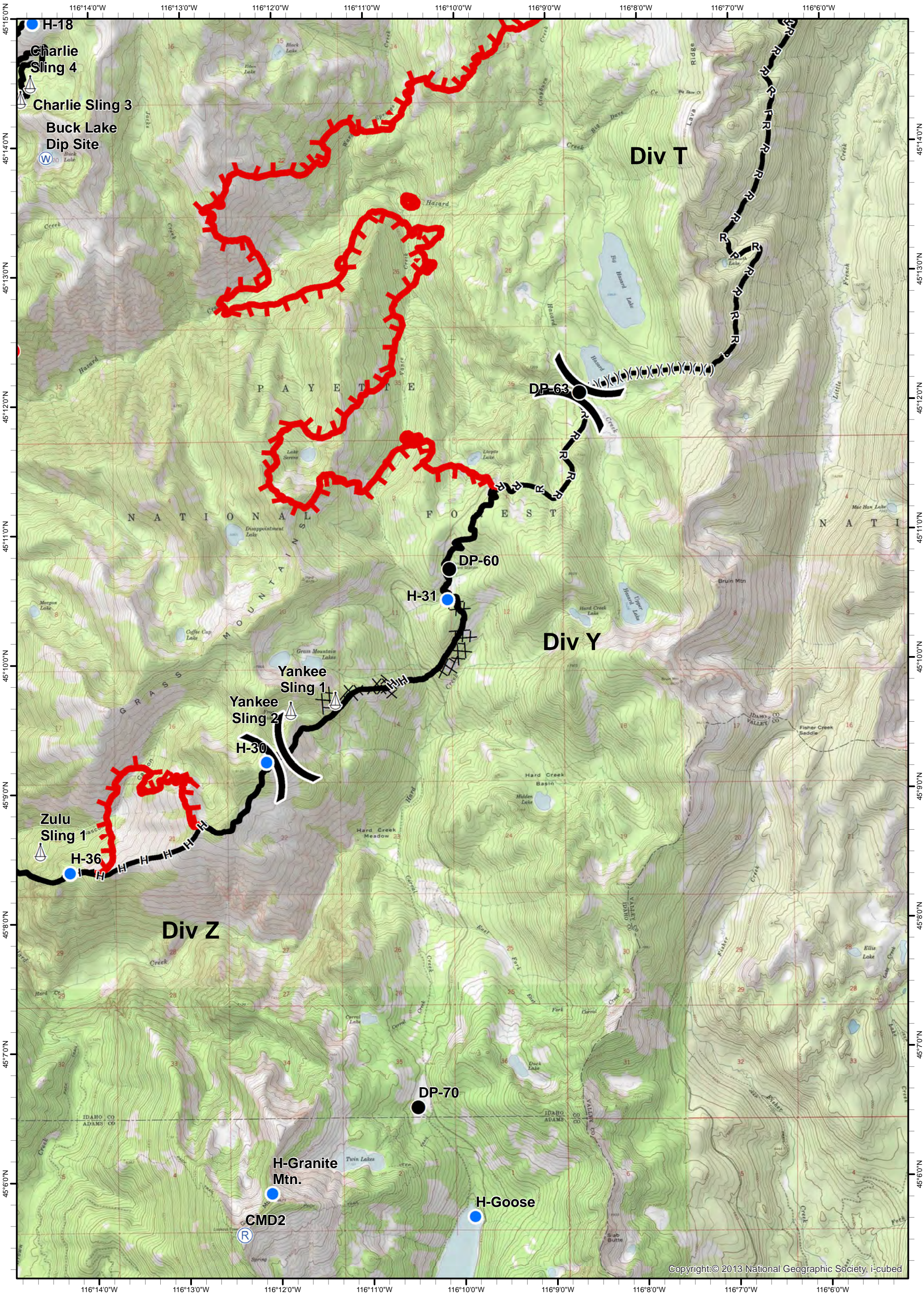
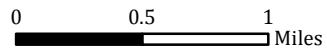
- ★ Cities/Towns
- () Division Breaks
- ⊙ Camp
- Drop Point
- 🚒 Lookout
- 🚁 Helispot
- 🚢 Sling Site
- 🏠 Ranch
- 🌊 Water Source
- 📶 Mobile Weather Unit
- 🚧 Limited Access
- 🔴 Uncontrolled Fire Edge
- () () () Ridge / Geographic Feature
- ⊗ Proposed Dozer Line
- ▬ Completed Line
- ⊗ ⊗ Completed Dozer Line
- H - H - Hand Line
- R - R - Road as Completed Line



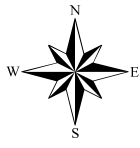
Tepee Springs Fire
IAP 2
ID-PAF-000192
9/23/2015
95,709 Acres



- ★ Cities/Towns
- () Division Breaks
- ⊙ Camp
- Drop Point
- 🚒 Lookout
- Helispot
- ⚓ Sling Site
- ▲ Ranch
- ⊙ Water Source
- WX Mobile Weather Unit
- ⊠ Limited Access
- 🔴 Uncontrolled Fire Edge
- ()() Ridge / Geographic Feature
- ⊗ Proposed Dozer Line
- ⊘ Completed Dozer Line
- H - H - Hand Line
- R - R - Road as Completed Line
- Completed Line



Tepee Springs Fire
IAP 3
ID-PAF-000192
9/23/2015
95,709 Acres



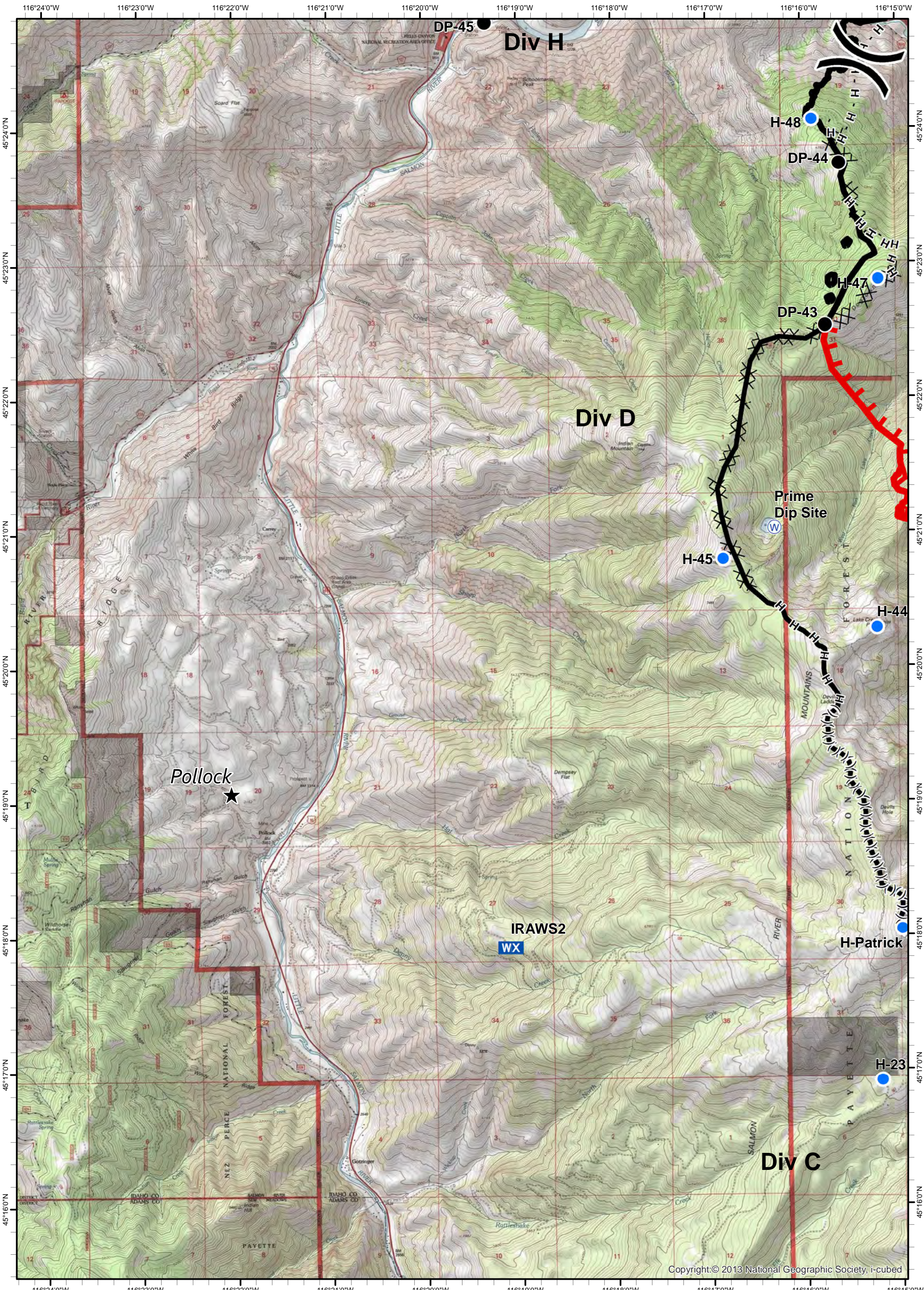
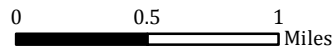
- ★ Cities/Towns
- () Division Breaks
- ⊙ Camp
- Drop Point

- 📏 Lookout
- 🚁 Helispot
- 🚢 Sling Site
- ▲ Ranch

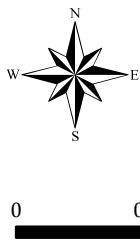
- 🌊 Water Source
- 📶 WX Mobile Weather Unit
- 🚧 Limited Access

- 🔴 Uncontrolled Fire Edge
- () () () Ridge / Geographic Feature
- ⊗ Proposed Dozer Line
- ▬ Completed Line

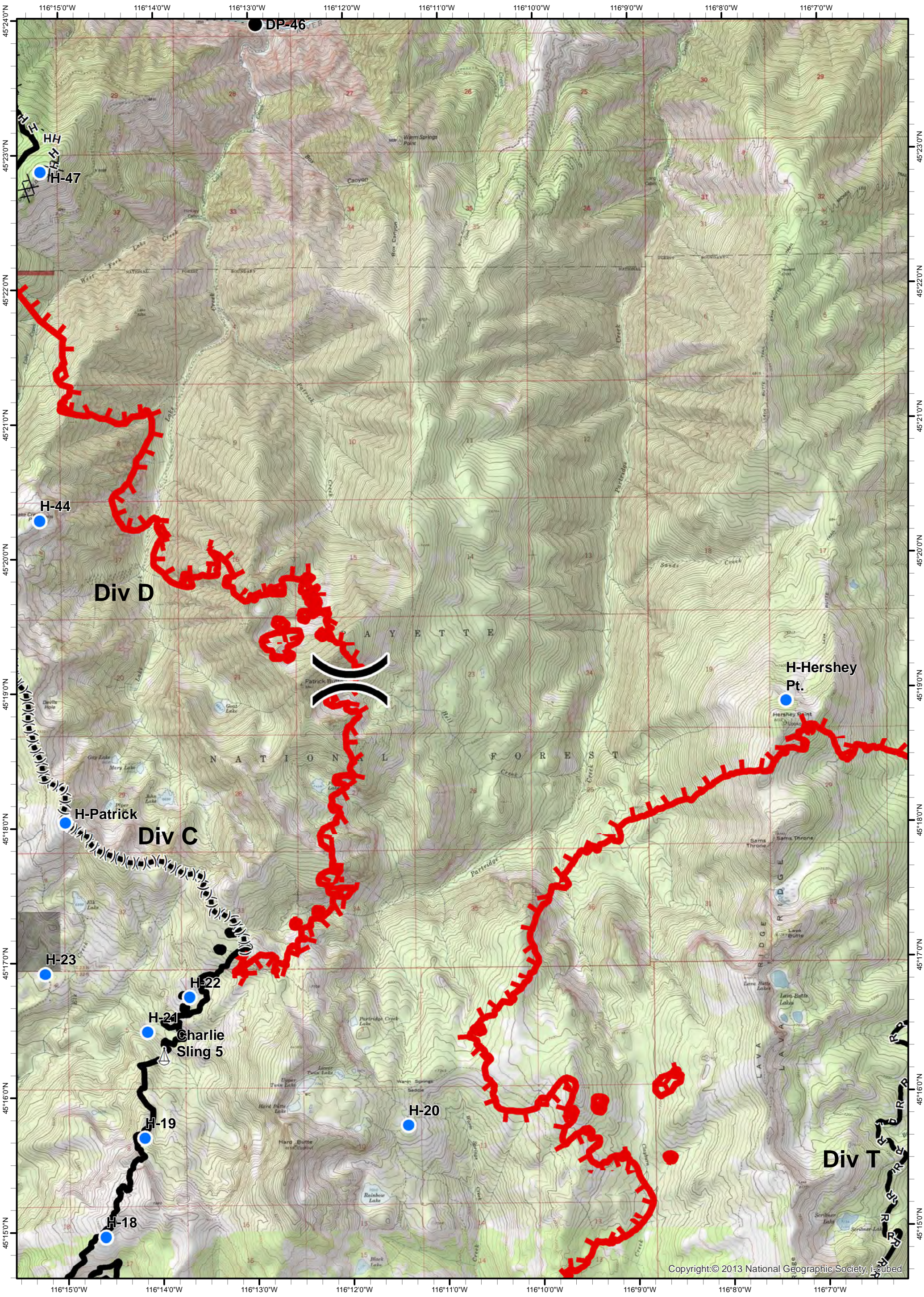
- ⊗ ⊗ Completed Dozer Line
- H - H - Hand Line
- R - R - Road as Completed Line



Tepee Springs Fire
 IAP 4
 ID-PAF-000192
 9/23/2015
 95,709 Acres



- ★ Cities/Towns
- () Division Breaks
- ⊙ Camp
- Drop Point
- 📡 Lookout
- 🚁 Helispot
- 🚢 Sling Site
- 🏠 Ranch
- 🌊 Water Source
- WX Mobile Weather Unit
- 🚧 Limited Access
- 🔴 Uncontrolled Fire Edge
- ()() Ridge / Geographic Feature
- ⊗ Proposed Dozer Line
- ▬ Completed Line
- ⊗ ⊗ Completed Dozer Line
- H - H - Hand Line
- R - R - Road as Completed Line



Tepee Springs Fire
 IAP 5
 ID-PAF-000192
 9/23/2015
 95,709 Acres



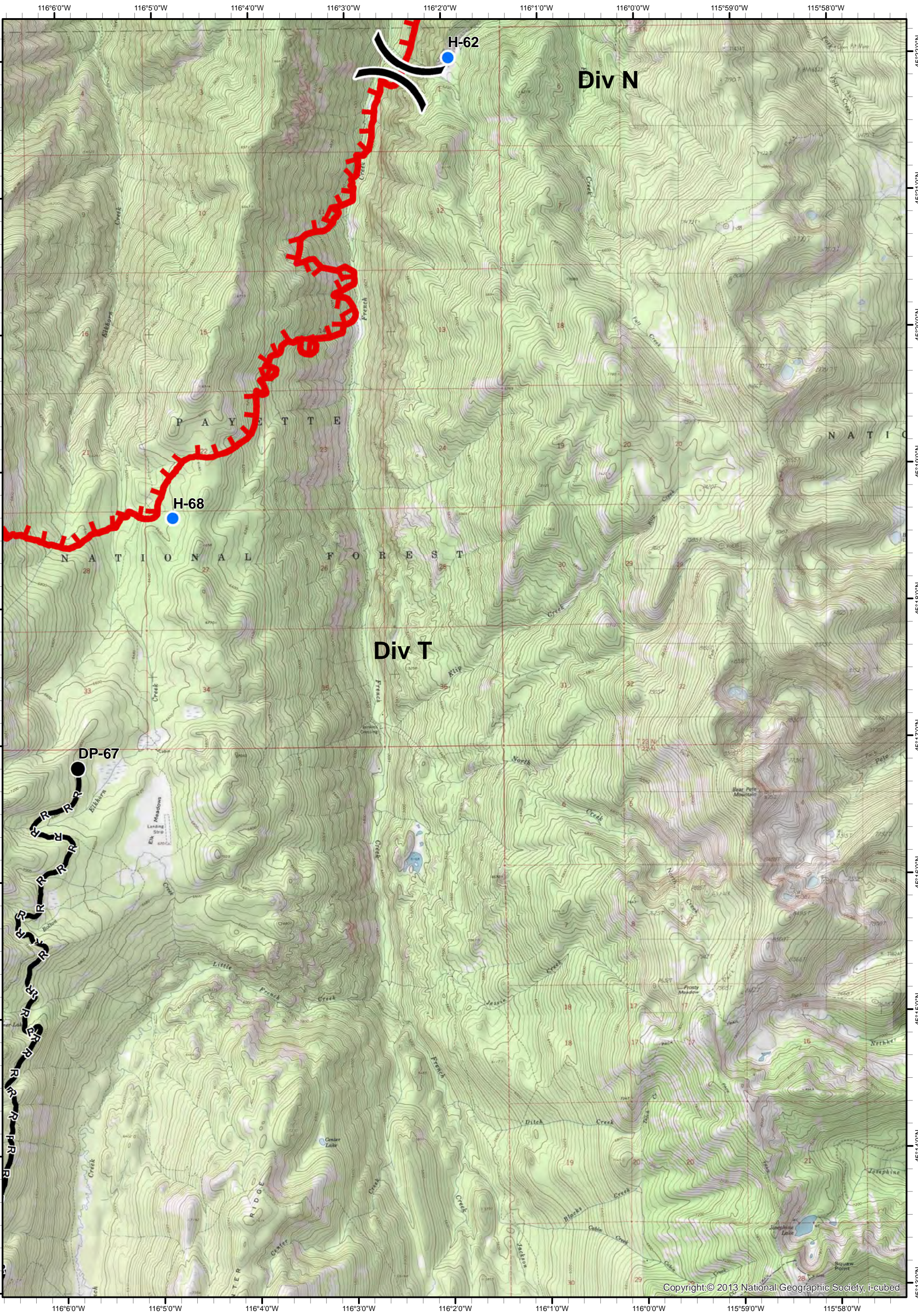
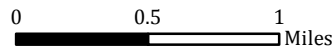
- ★ Cities/Towns
- () Division Breaks
- ⊙ Camp
- Drop Point

- 📏 Lookout
- 🚁 Helipod
- 🚢 Sling Site
- 🏠 Ranch

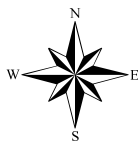
- 🌊 Water Source
- 📶 Mobile Weather Unit
- 🚧 Limited Access

- 🔥 Uncontrolled Fire Edge
- ()() Ridge / Geographic Feature
- ⊗ Proposed Dozer Line
- ▬ Completed Line

- ⊗ Completed Dozer Line
- H - H - Hand Line
- R - R - Road as Completed Line



Tepee Springs Fire
 IAP 6
 ID-PAF-000192
 9/23/2015
 95,709 Acres



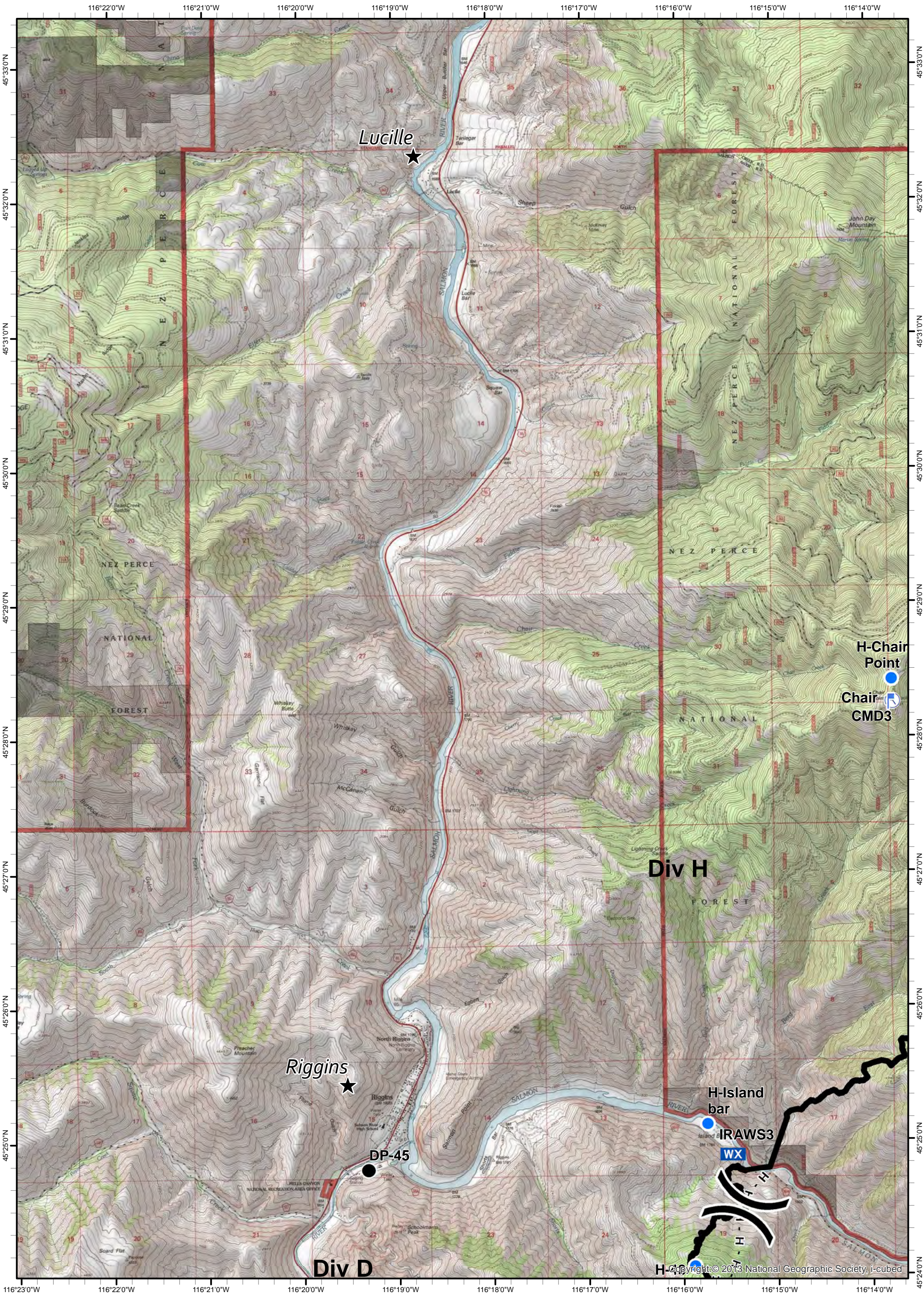
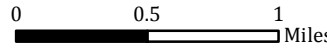
- ★ Cities/Towns
- () Division Breaks
- ⊙ Camp
- Drop Point

- 📍 Lookout
- 🚁 Helispot
- ⚓ Sling Site
- ▲ Ranch

- 🌊 Water Source
- WX Mobile Weather Unit
- 🚧 Limited Access

- 🔥 Uncontrolled Fire Edge
- () () () Ridge / Geographic Feature
- ⊗ Proposed Dozer Line
- ▬ Completed Line

- ⊗ ⊗ Completed Dozer Line
- H - H - Hand Line
- R - R - Road as Completed Line



H-Chain Point
 Chair CMD3

Div H

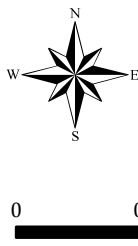
Riggins

DP-45

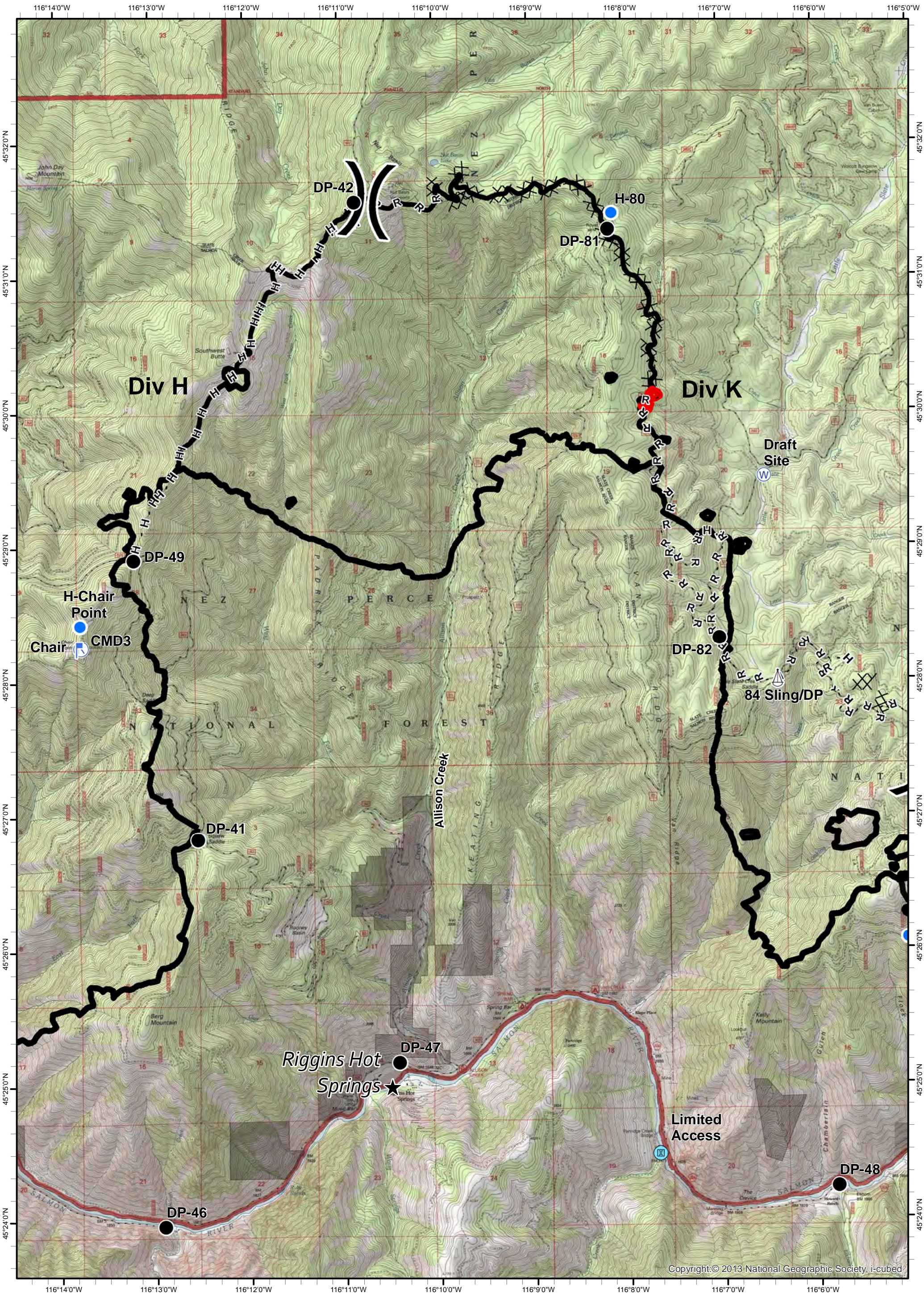
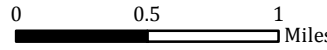
H-Island bar
 IRAWS3

Div D

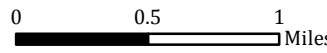
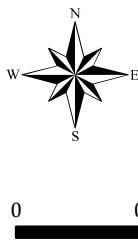
Tepee Springs Fire
IAP 7
ID-PAF-000192
9/23/2015
95,709 Acres



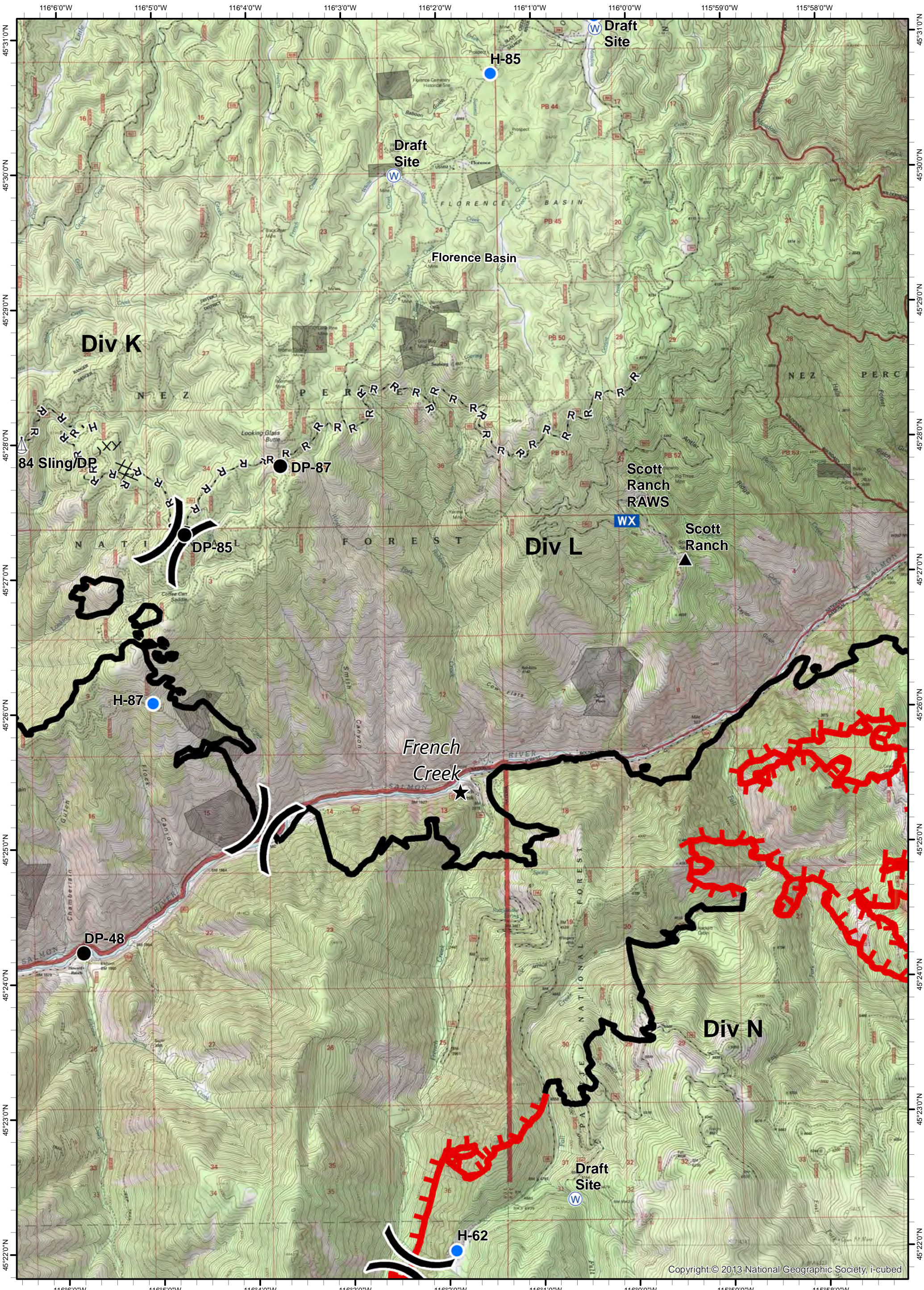
- ★ Cities/Towns
- () Division Breaks
- ⊙ Camp
- Drop Point
- 🚒 Lookout
- 🚁 Helispot
- 🚢 Sling Site
- 🏠 Ranch
- 🌊 Water Source
- WX Mobile Weather Unit
- 🚧 Limited Access
- 🔥 Uncontrolled Fire Edge
- () () () Ridge / Geographic Feature
- ⊗ Proposed Dozer Line
- ⊗ Completed Dozer Line
- H - H - Hand Line
- R - R - Road as Completed Line
- Completed Line



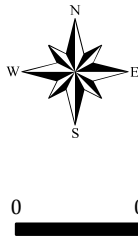
Tepee Springs Fire
 IAP 8
 ID-PAF-000192
 9/23/2015
 95,709 Acres



- ★ Cities/Towns
- () Division Breaks
- ⊙ Camp
- Drop Point
- ⚡ Lookout
- Helipad
- ⚓ Sling Site
- ▲ Ranch
- ⊙ Water Source
- WX Mobile Weather Unit
- ⊠ Limited Access
- Uncontrolled Fire Edge
- ()() Ridge / Geographic Feature
- ⊗ Proposed Dozer Line
- Completed Line
- ⊗ Completed Dozer Line
- H - H - Hand Line
- R - R - Road as Completed Line



Tepee Springs Fire
 IAP 9
 ID-PAF-000192
 9/23/2015
 95,709 Acres



- ★ Cities/Towns
- () Division Breaks
- ⊙ Camp
- Drop Point
- 📏 Lookout
- 📍 Helispot
- 🚰 Sling Site
- 🏠 Ranch
- 🌊 Water Source
- 📶 Mobile Weather Unit
- 🚧 Limited Access
- 🔴 Uncontrolled Fire Edge
- ()() Ridge / Geographic Feature
- ⊗ Proposed Dozer Line
- ▬ Completed Line
- ⊗⊗ Completed Dozer Line
- H - H - Hand Line
- R - R - Road as Completed Line

