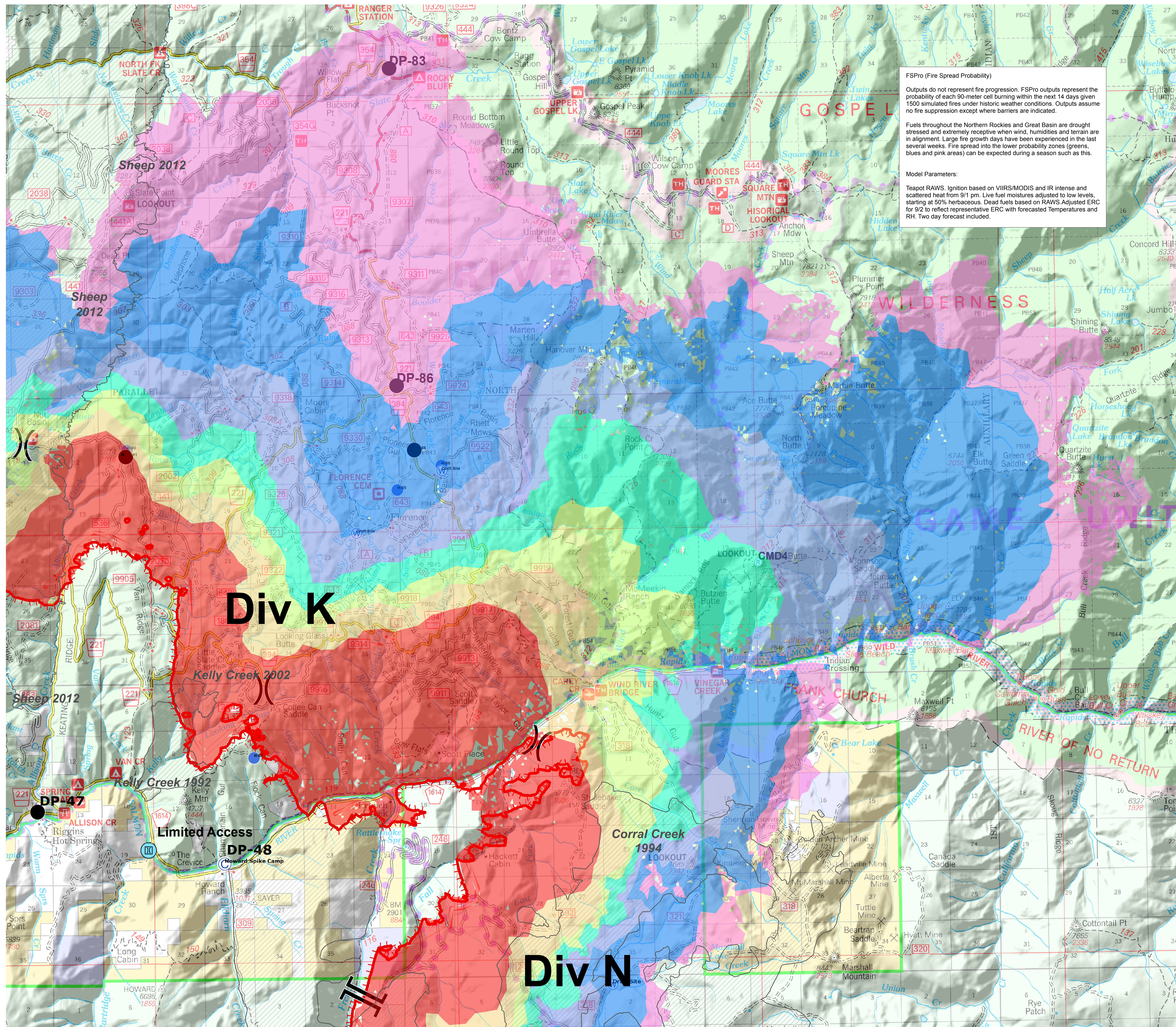


FS Pro
14 Day
 Tepee Springs
 000192
 09/02/2015
 1030



Legend

- Fire History
- 80-100%
- 60-79%
- 40-59%
- 20-39%
- 5-19%
- 2-4.9%
- 0-2%
- Division
- Branch
- Limited Access
- Camp
- Drop Point
- Helispot
- Repeater
- Water Source
- Uncontrolled Fire Edge



FSPro (Fire Spread Probability)

Outputs do not represent fire progression. FSPro outputs represent the probability of each 90-meter cell burning within the next 14 days given 1500 simulated fires under historic weather conditions. Outputs assume no fire suppression except where barriers are indicated.

Fuels throughout the Northern Rockies and Great Basin are drought stressed and extremely receptive when wind, humidities and terrain are in alignment. Large fire growth days have been experienced in the last several weeks. Fire spread into the lower probability zones (greens, blues and pink areas) can be expected during a season such as this.

Model Parameters:

Teapot RAWS. Ignition based on VIIRS/MODIS and IR intense and scattered heat from 9/1 pm. Live fuel moistures adjusted to low levels, starting at 50% herbaceous. Dead fuels based on RAWS Adjusted ERC for 9/2 to reflect representative ERC with forecasted Temperatures and RH. Two day forecast included.