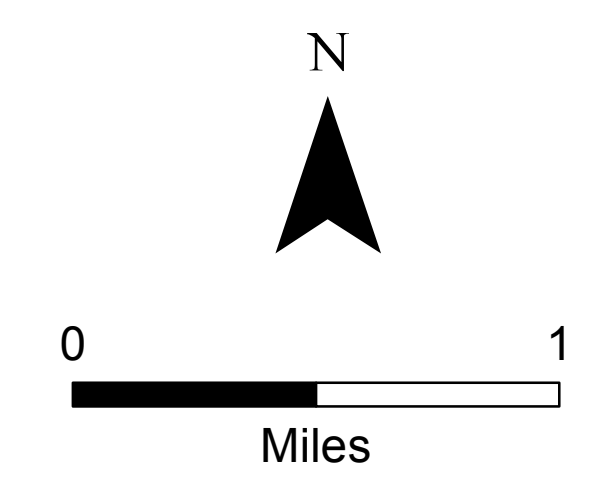
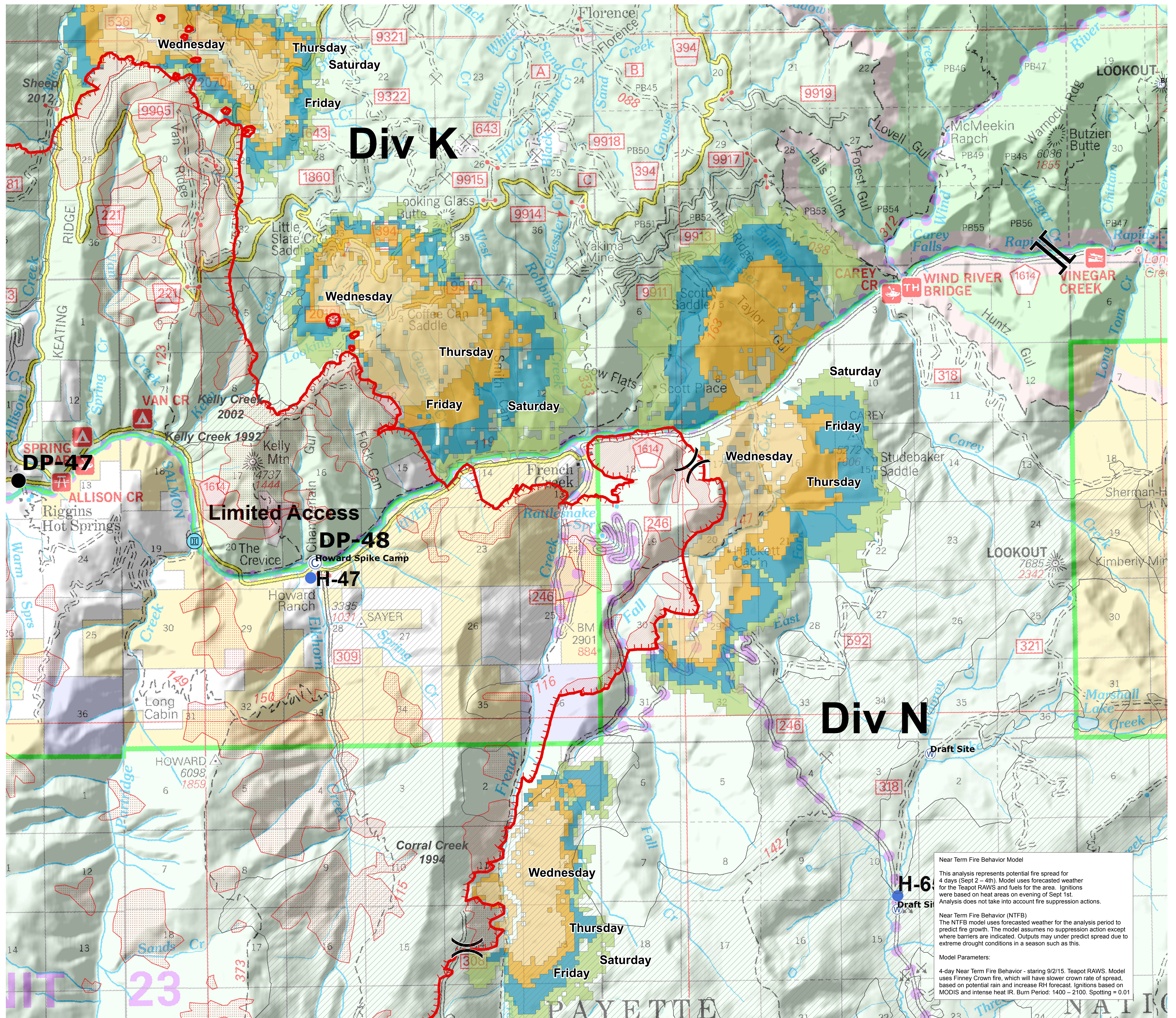


Near Term Analysis
Tepee Springs
 000192
 09/02/2015
 1030



Legend

- Sept. 2 - Wed.
- Sept. 3 - Thur.
- Sept. 4 - Fri.
- Sept. 5 - Sat.
- Fire History
- Scattered Heat
- Intense Heat
- Division
- Branch
- Limited Access
- Camp
- Drop Point
- Helispot
- Repeater
- Water Source
- Uncontrolled Fire Edge



Near Term Fire Behavior Model
 This analysis represents potential fire spread for 4 days (Sept 2 - 4th). Model uses forecasted weather for the Teapot RAWS and fuels for the area. Ignitions were based on heat areas on evening of Sept 1st. Analysis does not take into account fire suppression actions.

Near Term Fire Behavior (NTFB)
 The NTFB model uses forecasted weather for the analysis period to predict fire growth. The model assumes no suppression action except where barriers are indicated. Outputs may under predict spread due to extreme drought conditions in a season such as this.

Model Parameters:
 4-day Near Term Fire Behavior - starting 9/2/15. Teapot RAWS. Model uses Finney Crown fire, which will have slower crown rate of spread, based on potential rain and increase RH forecast. Ignitions based on MODIS and intense heat IR. Burn Period: 1400 - 2100. Spottling = 0.01