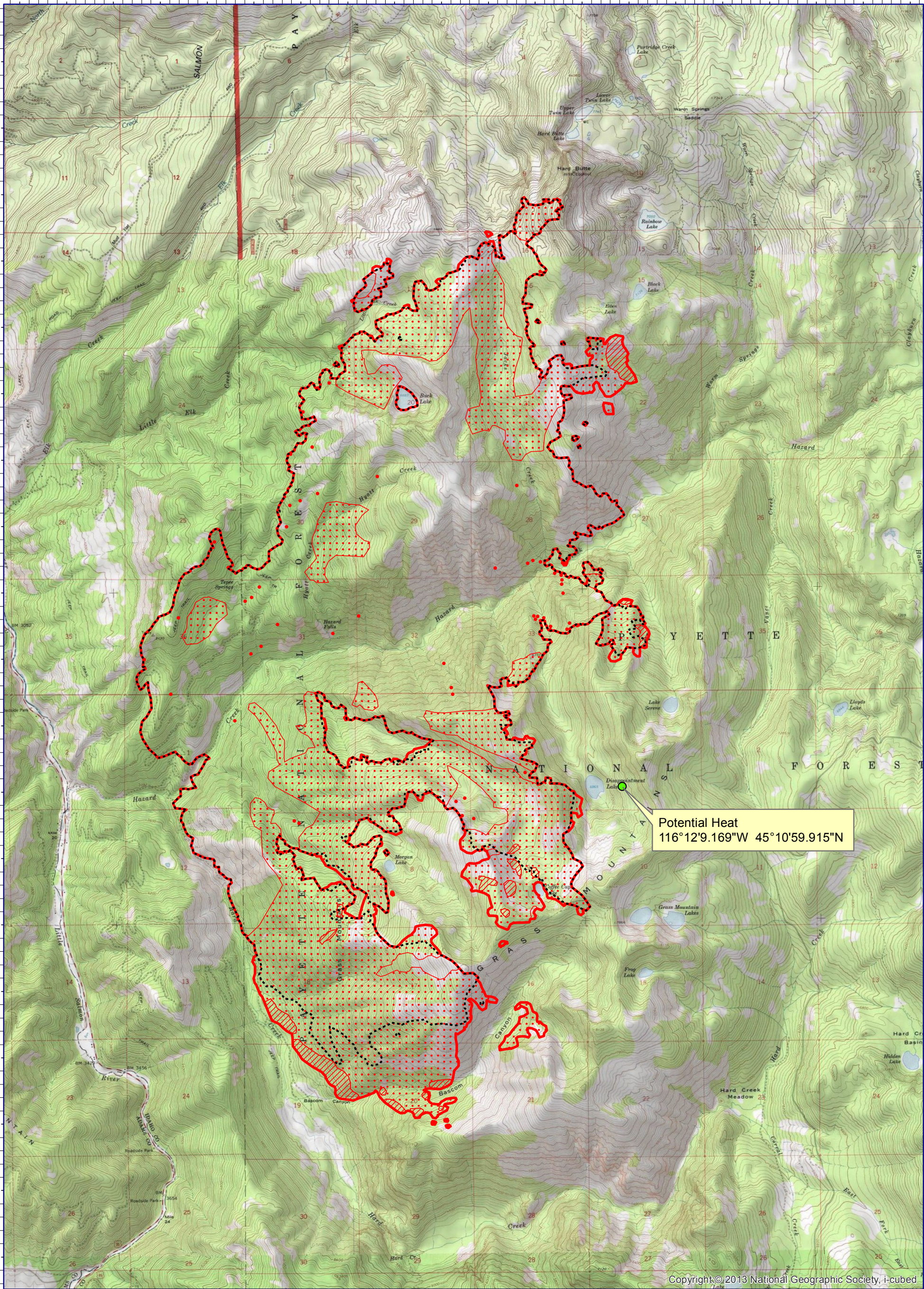


116°18'0"W 116°17'0"W 116°16'0"W 116°15'0"W 116°14'0"W 116°13'0"W 116°12'0"W 116°11'0"W 116°10'0"W 116°9'0"W

45°16'30"N 45°16'0"N 45°15'30"N 45°15'0"N 45°14'30"N 45°14'0"N 45°13'30"N 45°13'0"N 45°12'30"N 45°12'0"N 45°11'30"N 45°11'0"N 45°10'30"N 45°10'0"N 45°9'30"N 45°9'0"N 45°8'30"N 45°8'0"N 45°7'30"N

45°16'30"N 45°16'0"N 45°15'30"N 45°15'0"N 45°14'30"N 45°14'0"N 45°13'30"N 45°13'0"N 45°12'30"N 45°12'0"N 45°11'30"N 45°11'0"N 45°10'30"N 45°10'0"N 45°9'30"N 45°9'0"N 45°8'30"N 45°8'0"N 45°7'30"N



Potential Heat
 116°12'9.169"W 45°10'59.915"N

Copyright © 2013 National Geographic Society, i-cubed

116°18'30"W 116°17'30"W 116°16'30"W 116°15'30"W 116°14'30"W 116°13'30"W 116°12'30"W 116°11'30"W 116°10'30"W 116°9'30"W



INFRARED MAP
 Tepee Springs (ID-PAF-000192)
 Flight: Aug 22, 2015 @ 2355 MDT
 10,979 IR Acres
 IRIN Cheron Ferland (Oregon)
 IRIN (t): Dale Gough (Oregon)



- Legend**
- Previous IR Perimeter (20150821_1952)
 - Isolated Heat
 - Heat Perimeter
 - Intense Heat
 - Scattered Heat

