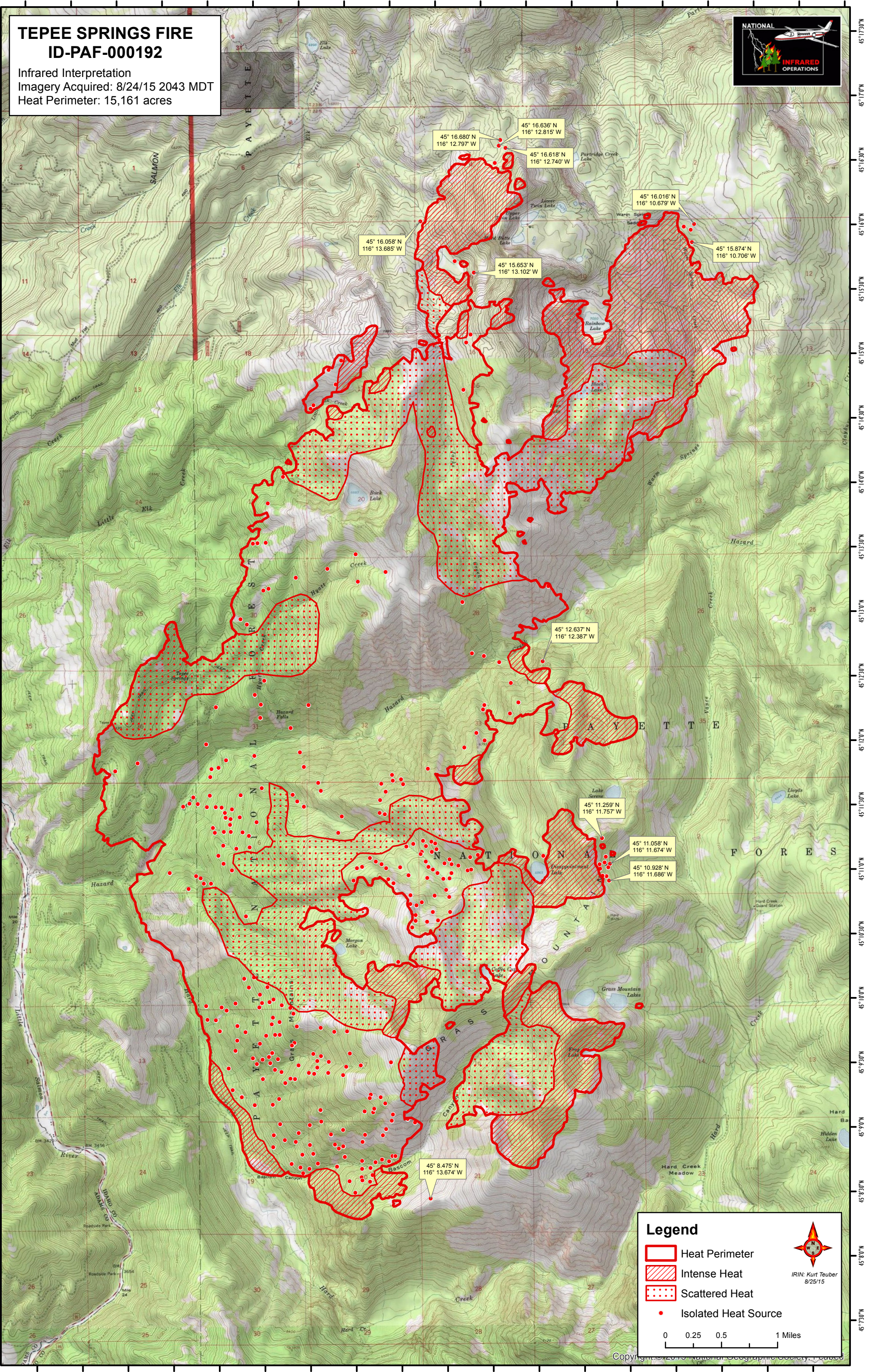


116°18'0"W 116°17'30"W 116°17'0"W 116°16'30"W 116°16'0"W 116°15'30"W 116°15'0"W 116°14'30"W 116°14'0"W 116°13'30"W 116°13'0"W 116°12'30"W 116°12'0"W 116°11'30"W 116°11'0"W 116°10'30"W 116°10'0"W 116°9'30"W 116°9'0"W

TEPEE SPRINGS FIRE ID-PAF-000192

Infrared Interpretation
Imagery Acquired: 8/24/15 2043 MDT
Heat Perimeter: 15,161 acres



45° 16.680' N
116° 12.797' W

45° 16.636' N
116° 12.815' W

45° 16.618' N
116° 12.740' W

45° 16.058' N
116° 13.685' W

45° 15.653' N
116° 13.102' W

45° 16.016' N
116° 10.679' W

45° 15.874' N
116° 10.706' W

45° 12.637' N
116° 12.387' W

45° 11.259' N
116° 11.757' W

45° 11.058' N
116° 11.674' W

45° 10.928' N
116° 11.686' W

45° 8.475' N
116° 13.674' W

Legend

- Heat Perimeter
- Intense Heat
- Scattered Heat
- Isolated Heat Source

0 0.25 0.5 1 Miles

IRIN: Kurt Teuber
8/25/15

116°18'0"W 116°17'30"W 116°17'0"W 116°16'30"W 116°16'0"W 116°15'30"W 116°15'0"W 116°14'30"W 116°14'0"W 116°13'30"W 116°13'0"W 116°12'30"W 116°12'0"W 116°11'30"W 116°11'0"W 116°10'30"W 116°10'0"W 116°9'30"W 116°9'0"W