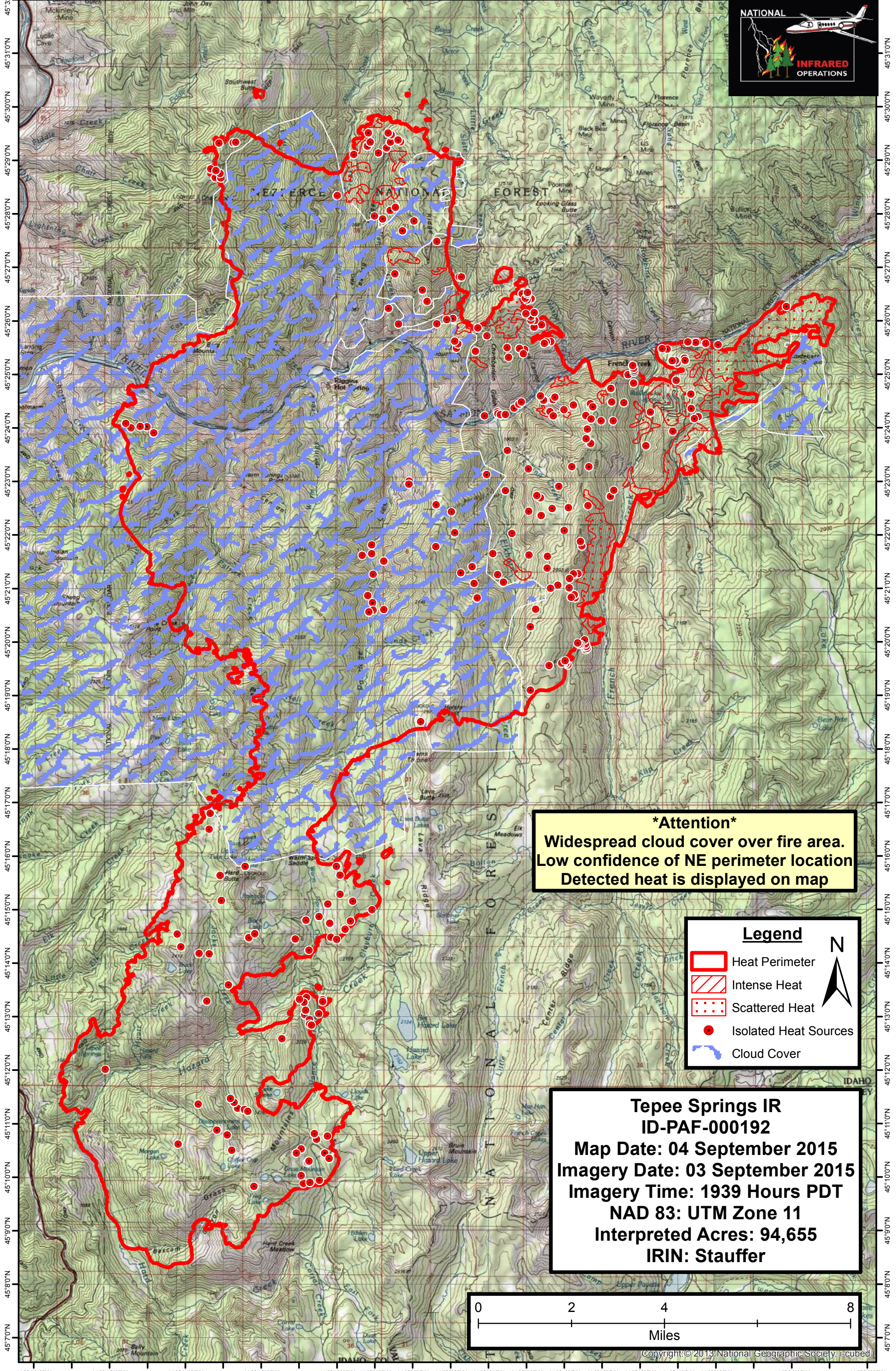








116°18'0"W 116°16'0"W 116°14'0"W 116°12'0"W 116°10'0"W 116°9'0"W 116°8'0"W 116°7'0"W 116°6'0"W 116°5'0"W 116°4'0"W 116°3'0"W 116°2'0"W 116°1'0"W 116°0'0"W 115°58'0"W 115°56'0"W



Attention
Widespread cloud cover over fire area.
Low confidence of NE perimeter location
Detected heat is displayed on map

Legend

-  Heat Perimeter
-  Intense Heat
-  Scattered Heat
-  Isolated Heat Sources
-  Cloud Cover



Tepee Springs IR
ID-PAF-000192
Map Date: 04 September 2015
Imagery Date: 03 September 2015
Imagery Time: 1939 Hours PDT
NAD 83: UTM Zone 11
Interpreted Acres: 94,655
IRIN: Stauffer



116°18'0"W 116°16'0"W 116°14'0"W 116°12'0"W 116°10'0"W 116°9'0"W 116°8'0"W 116°7'0"W 116°6'0"W 116°5'0"W 116°4'0"W 116°3'0"W 116°2'0"W 116°1'0"W 116°0'0"W 115°58'0"W 115°56'0"W