

116°15'0"W

116°10'0"W

116°5'0"W

116°0'0"W

115°5'0"W

45°30'0"N

45°25'0"N

45°20'0"N

45°15'0"N

45°10'0"N

45°30'0"N

45°25'0"N

45°20'0"N

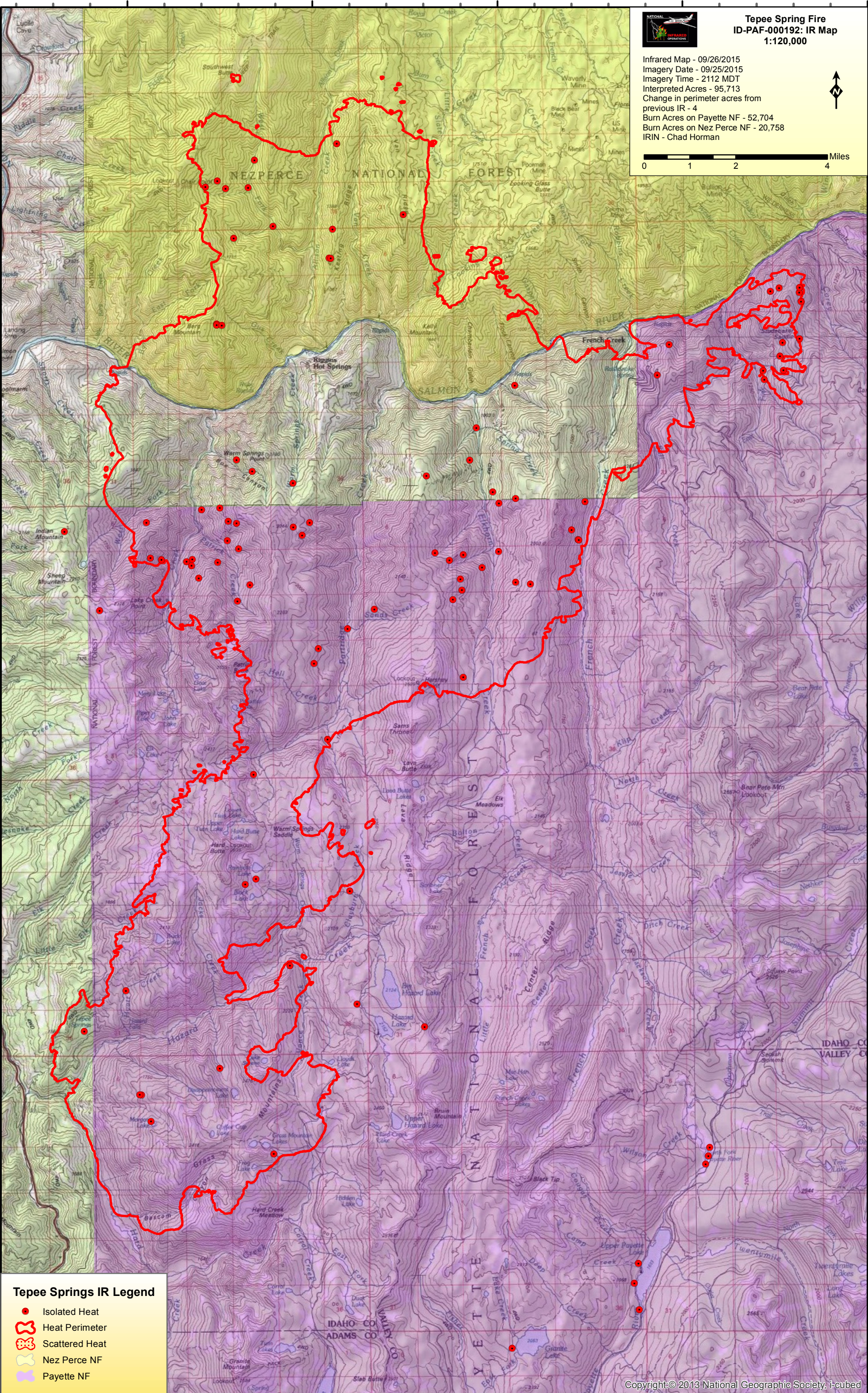
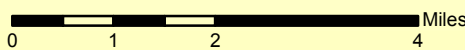
45°15'0"N

45°10'0"N



Tepee Spring Fire ID-PAF-000192: IR Map 1:120,000

Infrared Map - 09/26/2015
Imagery Date - 09/25/2015
Imagery Time - 2112 MDT
Interpreted Acres - 95,713
Change in perimeter acres from
previous IR - 4
Burn Acres on Payette NF - 52,704
Burn Acres on Nez Perce NF - 20,758
IRIN - Chad Horman



Tepee Springs IR Legend

- Isolated Heat
- Heat Perimeter
- Scattered Heat
- Nez Perce NF
- Payette NF

116°15'0"W

116°10'0"W

116°5'0"W

116°0'0"W

115°5'0"W