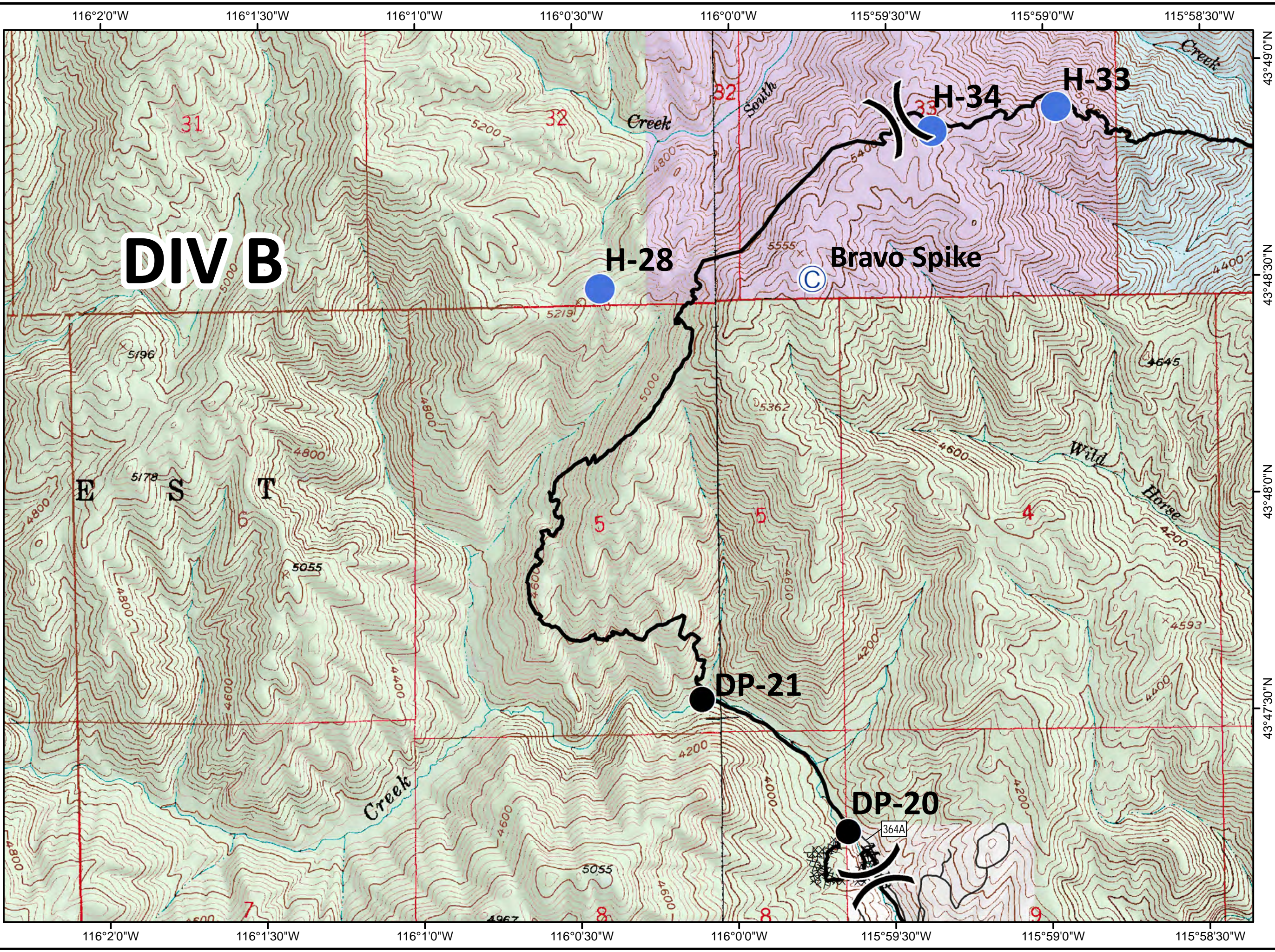
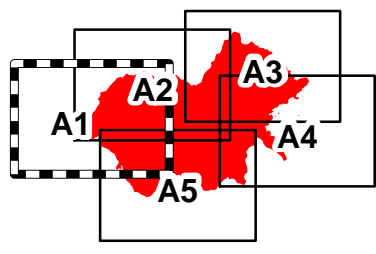
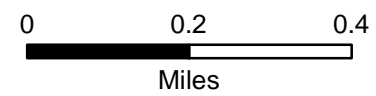


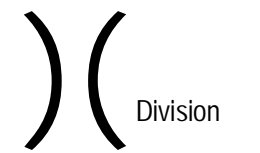
Walker Fire
 10/20/2015
 ID-SWS-001299
 J4C0
 5,963 GIS acres
 Perimeter as of
 10/17/2015 0830
 Tile A1

DIV B

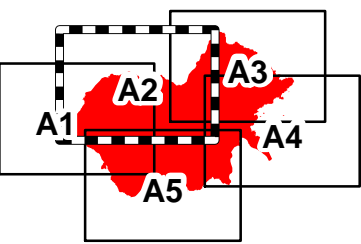
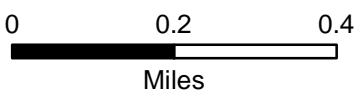
-  Division
-  Camp
-  Drop Point
-  Helispot
-  Road
-  Completed Dozer Line
-  Completed Line
- Ownership
 -  PRIVATE
 -  STATE
 -  USFS
 -  Pottlatch



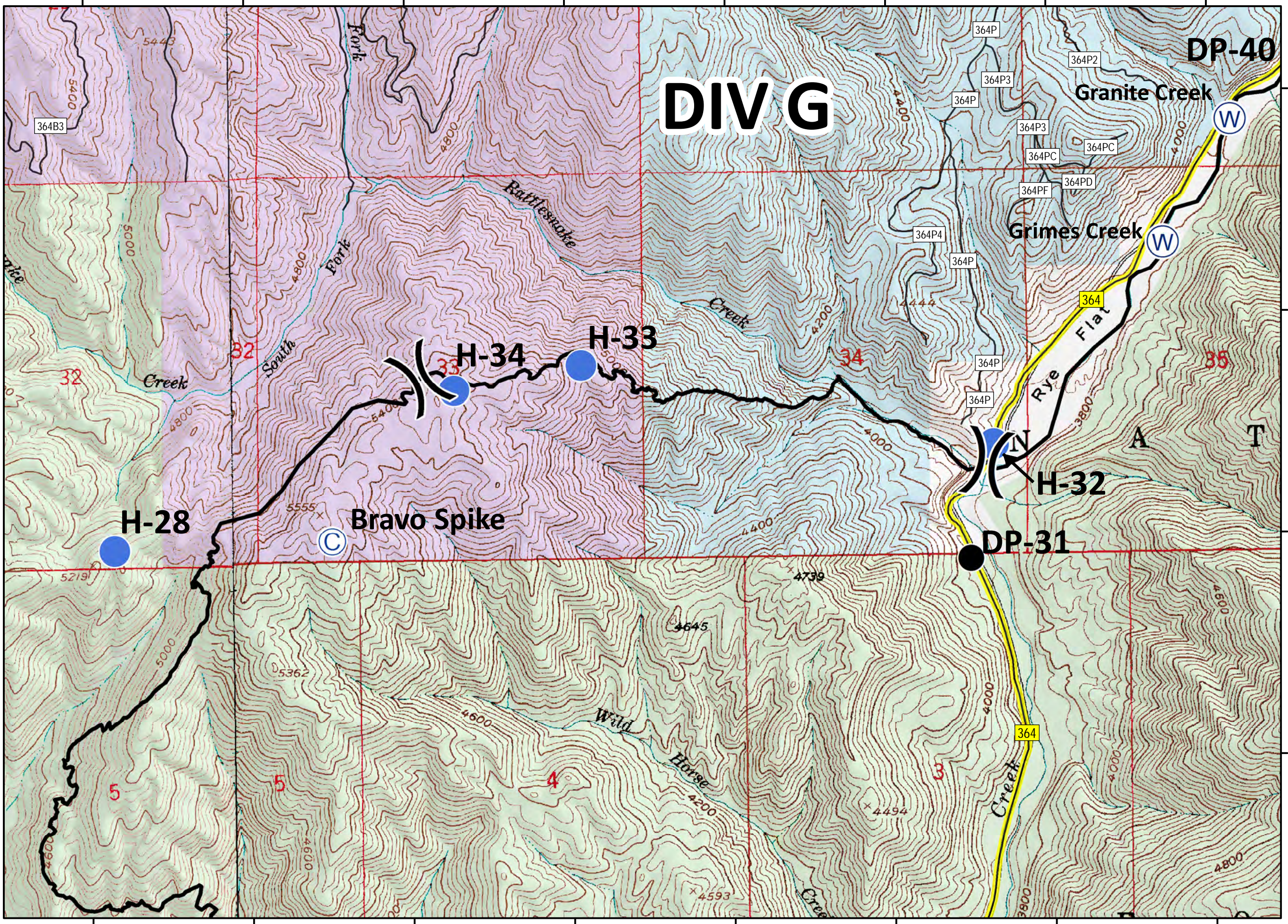
Walker Fire
 10/20/2015
 ID-SWS-001299
 J4C0
 5,963 GIS acres
 Perimeter as of
 10/17/2015 0830
 Tile A2



- Ownership
- PRIVATE
 - STATE
 - USFS
 - Potlatch



DIV G



116°0'30"W 116°0'0"W 115°59'30"W 115°59'0"W 115°58'30"W 115°58'0"W 115°57'30"W 115°57'0"W

116°0'30"W 116°0'0"W 115°59'30"W 115°59'0"W 115°58'30"W 115°58'0"W 115°57'30"W 115°57'0"W

43°49'30"N
43°49'0"N
43°48'30"N
43°48'0"N

Walker Fire

10/20/2015

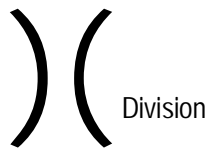
ID-SWS-001299

J4C0

5,963 GIS acres

Perimeter as of
10/17/2015 0830

Tile A3



Division



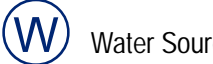
Drop Point



Helispot



Pump



Water Source



Road



Fire Access Route



Completed Dozer Line



Completed Line



Hand Line



Completed Burnout

Ownership

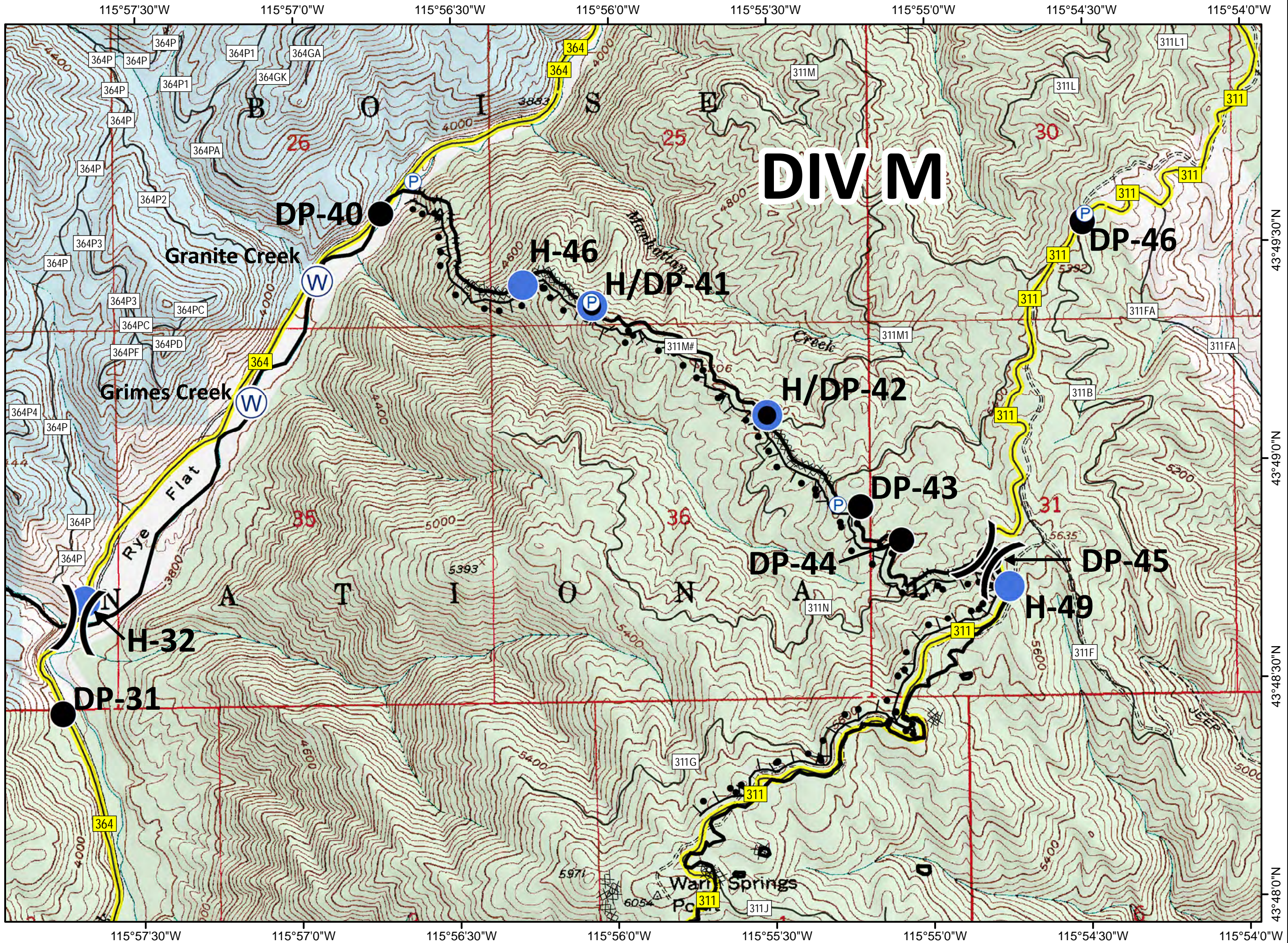
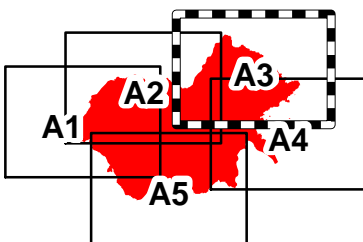
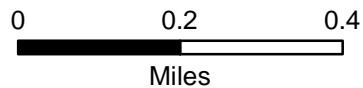
PRIVATE



STATE



USFS



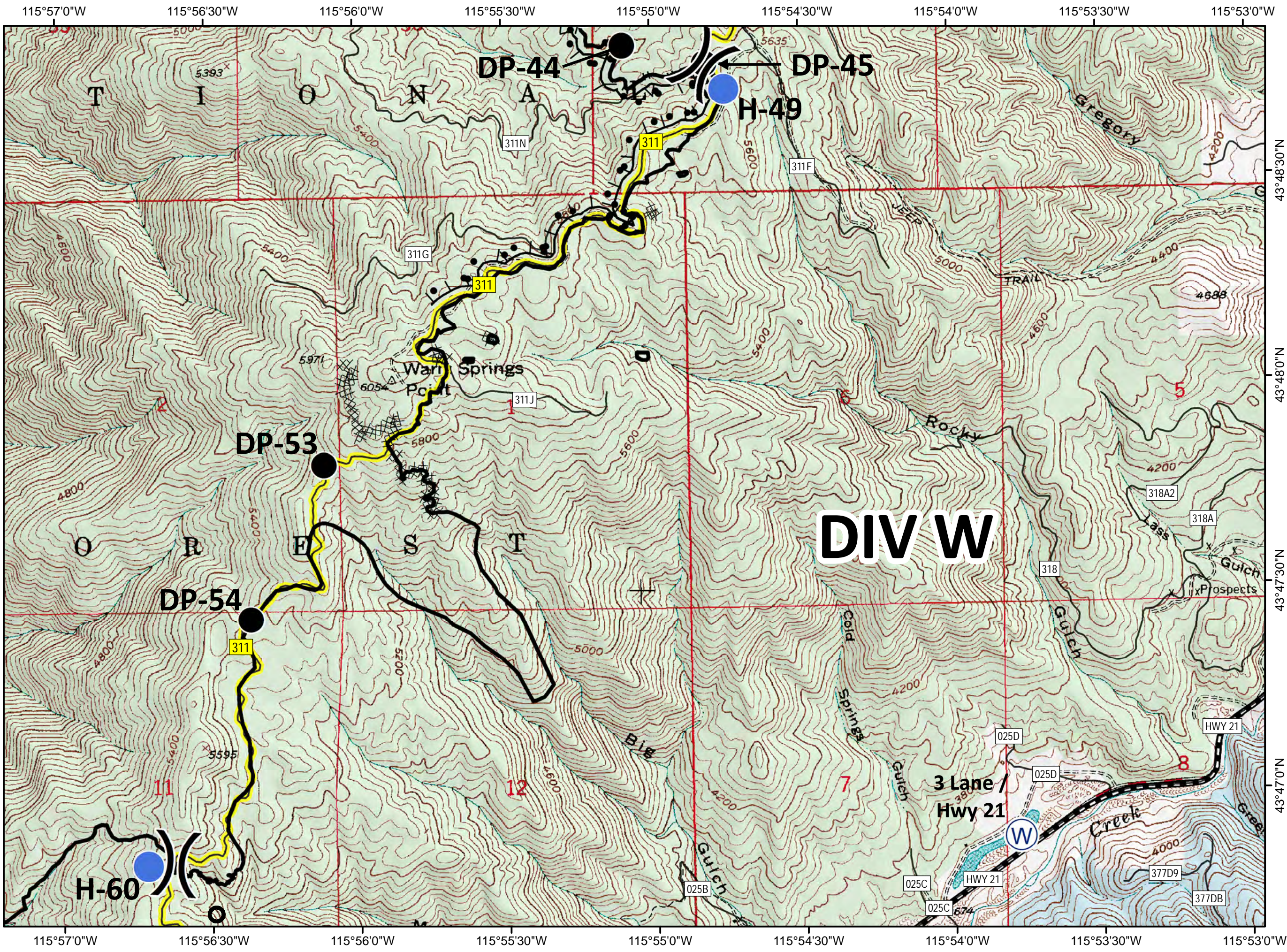
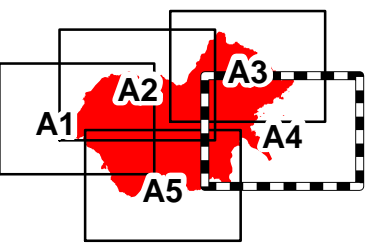
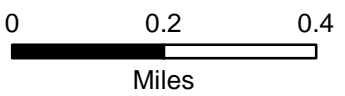
Walker Fire

10/20/2015
ID-SWS-001299
J4C0
5,963 GIS acres
Perimeter as of
10/17/2015 0830










Tile A4

- Division
- Drop Point
- Helispot
- Water Source
- Road
- Highway 21
- Fire Access Route
- Completed Dozer Line
- Completed Line
- Hand Line
- Completed Burnout

- Ownership
- PRIVATE
 - STATE
 - USFS



Walker Fire
 10/20/2015
 ID-SWS-001299
 J4C0
 5,963 GIS acres
 Perimeter as of
 10/17/2015 0830
 Tile A5

-  Division
-  Drop Point
-  Helispot
-  Road
-  Fire Access Route
-  Completed Dozer Line
-  Completed Line
-  Hand Line
- Ownership
 -  PRIVATE
 -  STATE
 -  USFS

