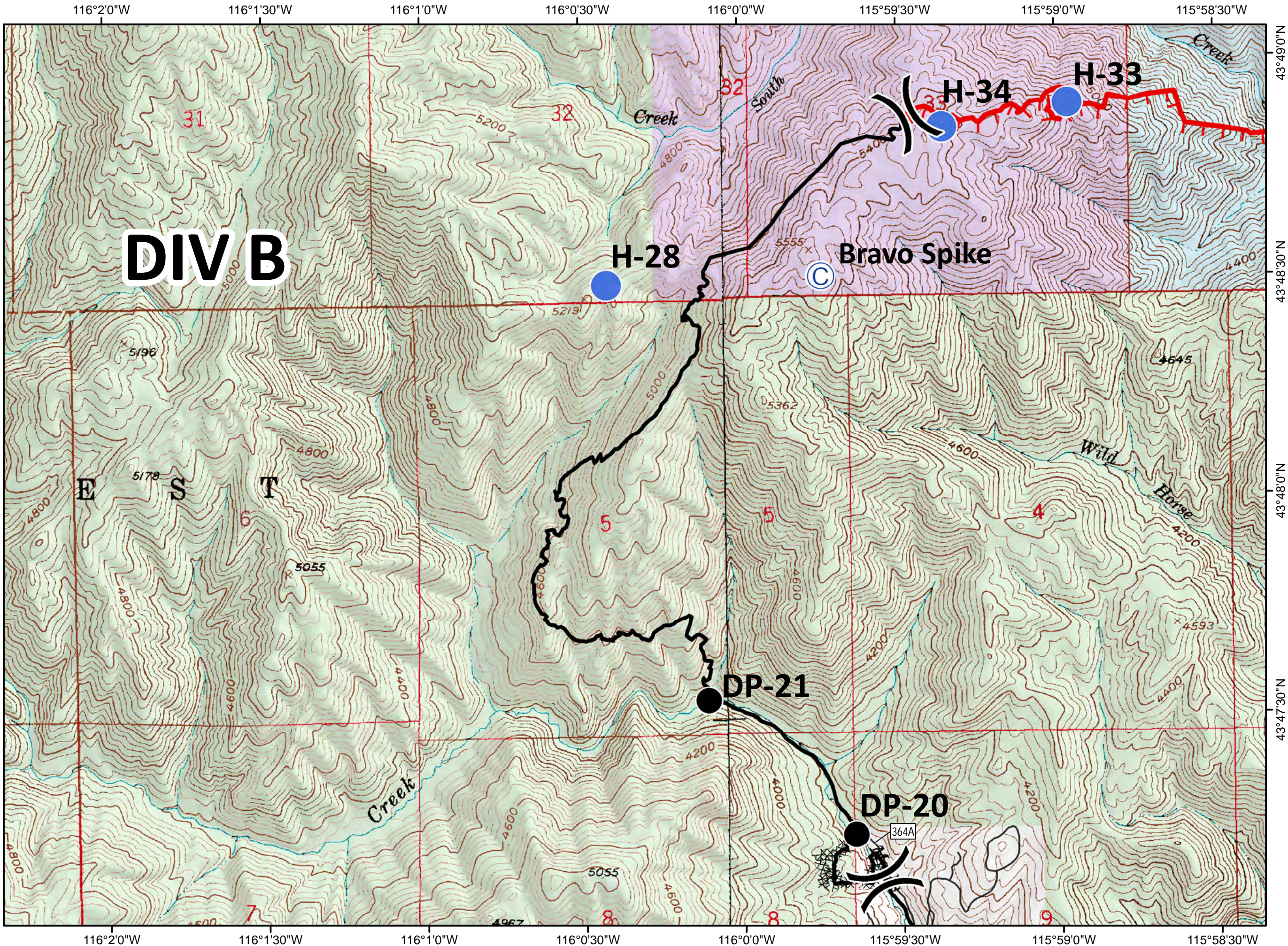
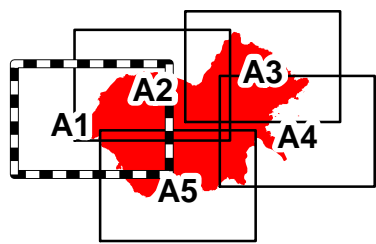
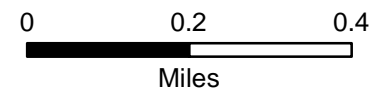


Walker Fire
 10/17/2015
 ID-SWS-001299
 J4C0
 5,978 GIS acres
 Perimeter as of
 10/16/2015 1730
 Tile A1



- Division
- Camp
- Drop Point
- Helispot
- Road
- Uncontrolled Fire Edge
- Completed Dozer Line
- Completed Line

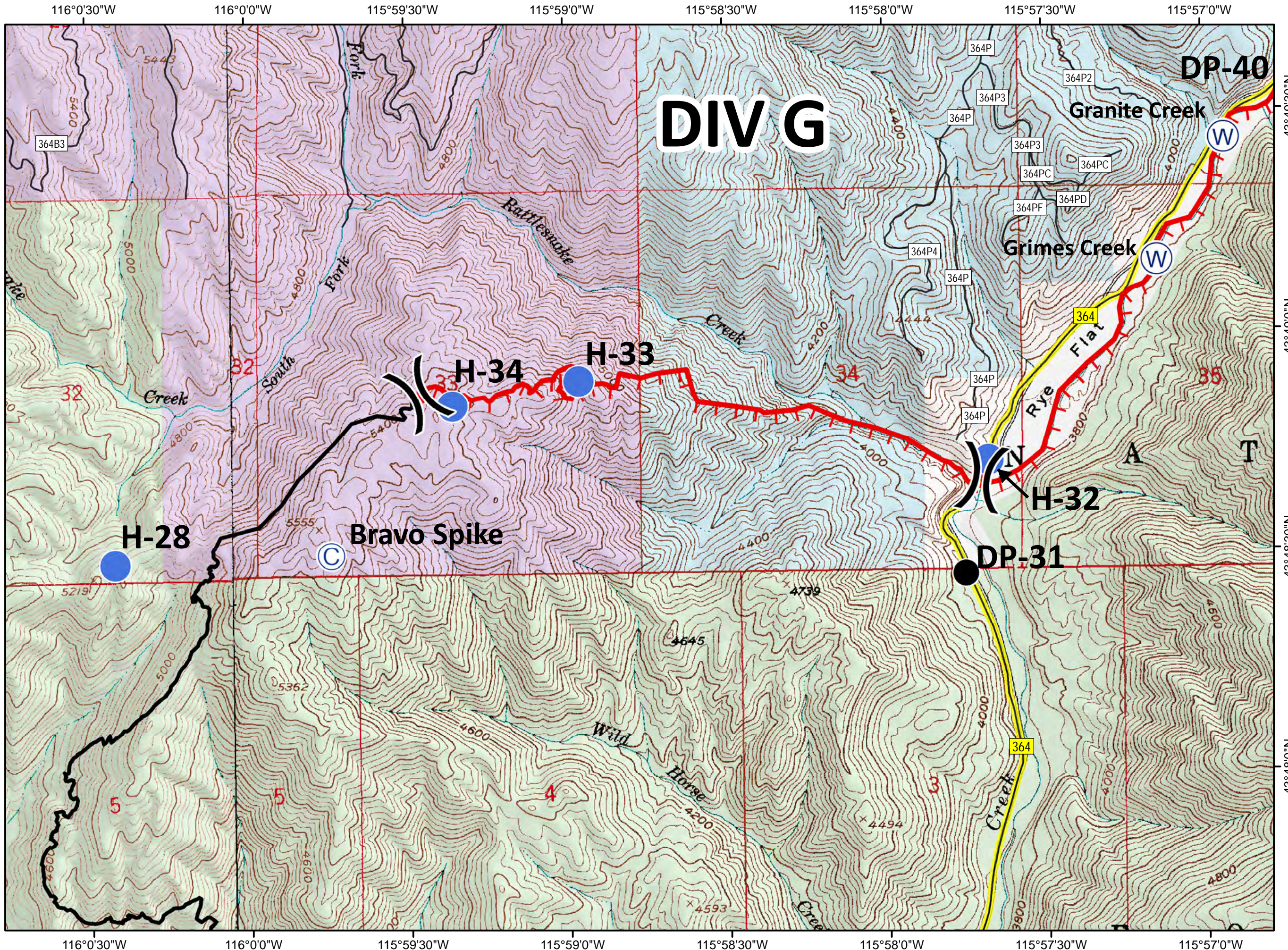
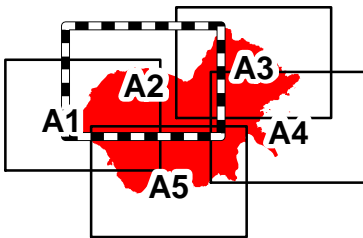
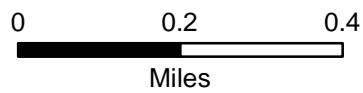
- Ownership
- PRIVATE
 - STATE
 - USFS
 - Pollatch



Walker Fire
 10/17/2015
 ID-SWS-001299
 J4C0
 5,978 GIS acres
 Perimeter as of
 10/16/2015 1730
 Tile A2

- Division
- Camp
- Drop Point
- Helispot
- Water Source
- Road
- Fire Access Route
- Uncontrolled Fire Edge
- Completed Line

- Ownership
- PRIVATE
 - STATE
 - USFS
 - Pollatch



DIV G

DP-40

Granite Creek

Grimes Creek

H-32

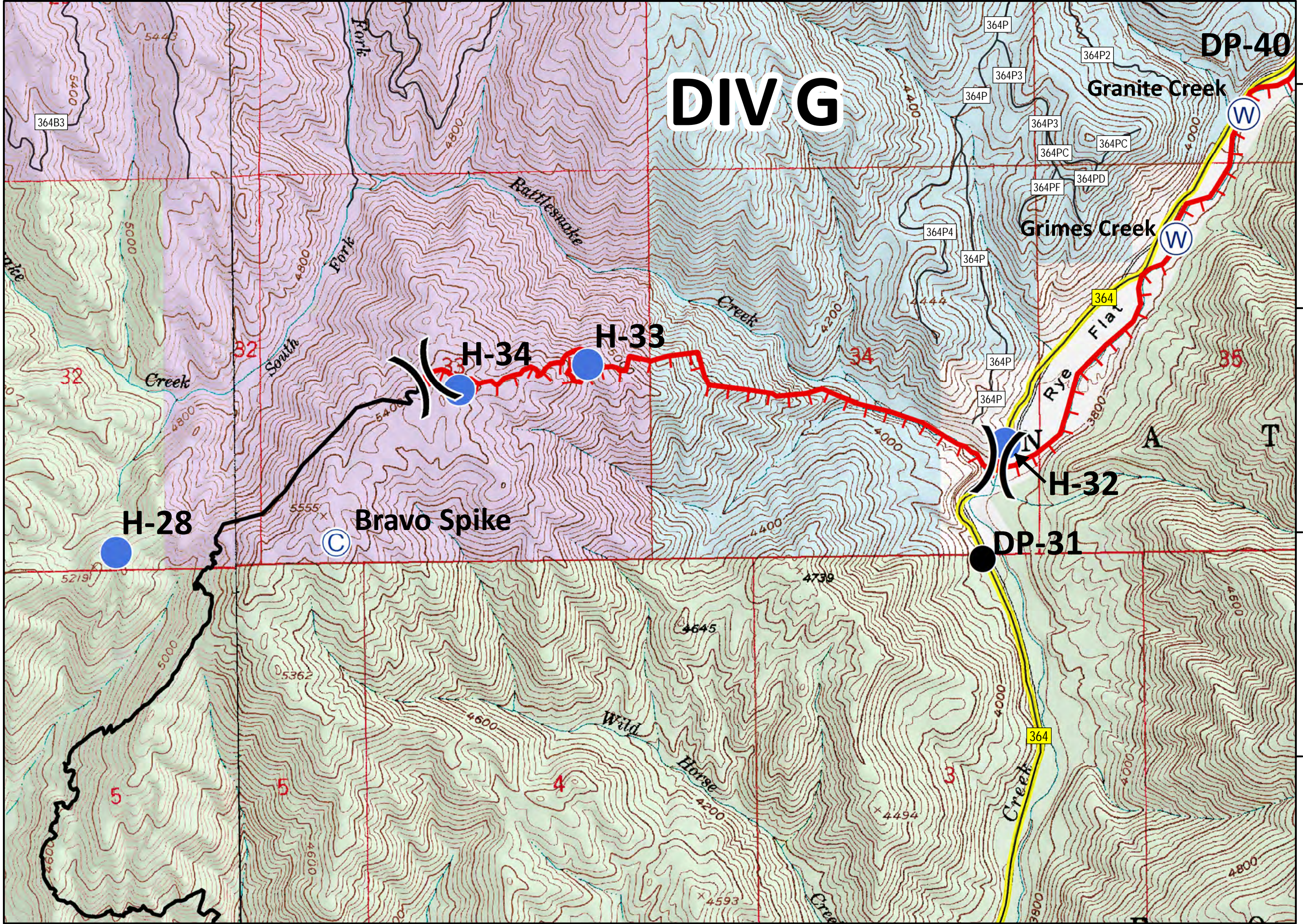
DP-31

Bravo Spike

H-34

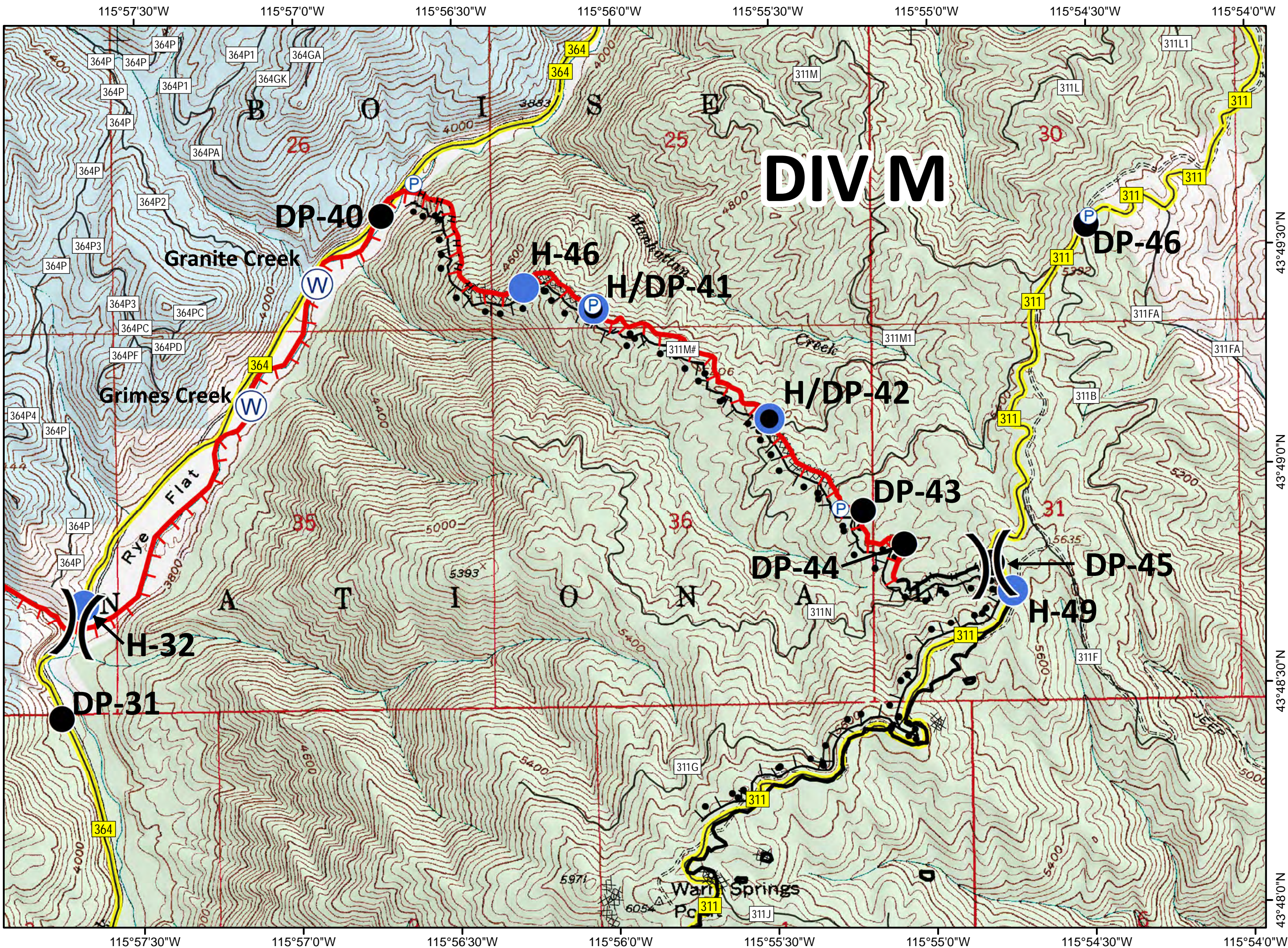
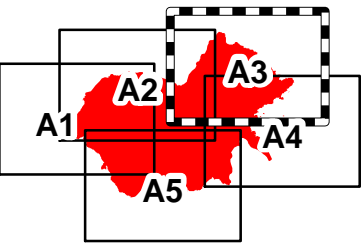
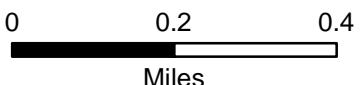
H-33

H-28






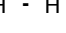
Walker Fire
 10/17/2015
 ID-SWS-001299
 J4C0
 5,978 GIS acres
 Perimeter as of
 10/16/2015 1730
 Tile A3


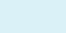

- Division
- Drop Point
- Helispot
- Pump
- Water Source
- Road
- Fire Access Route
- Uncontrolled Fire Edge
- Completed Dozer Line
- Completed Line
- Hand Line
- Completed Burnout
- Ownership**
- PRIVATE
- STATE
- USFS

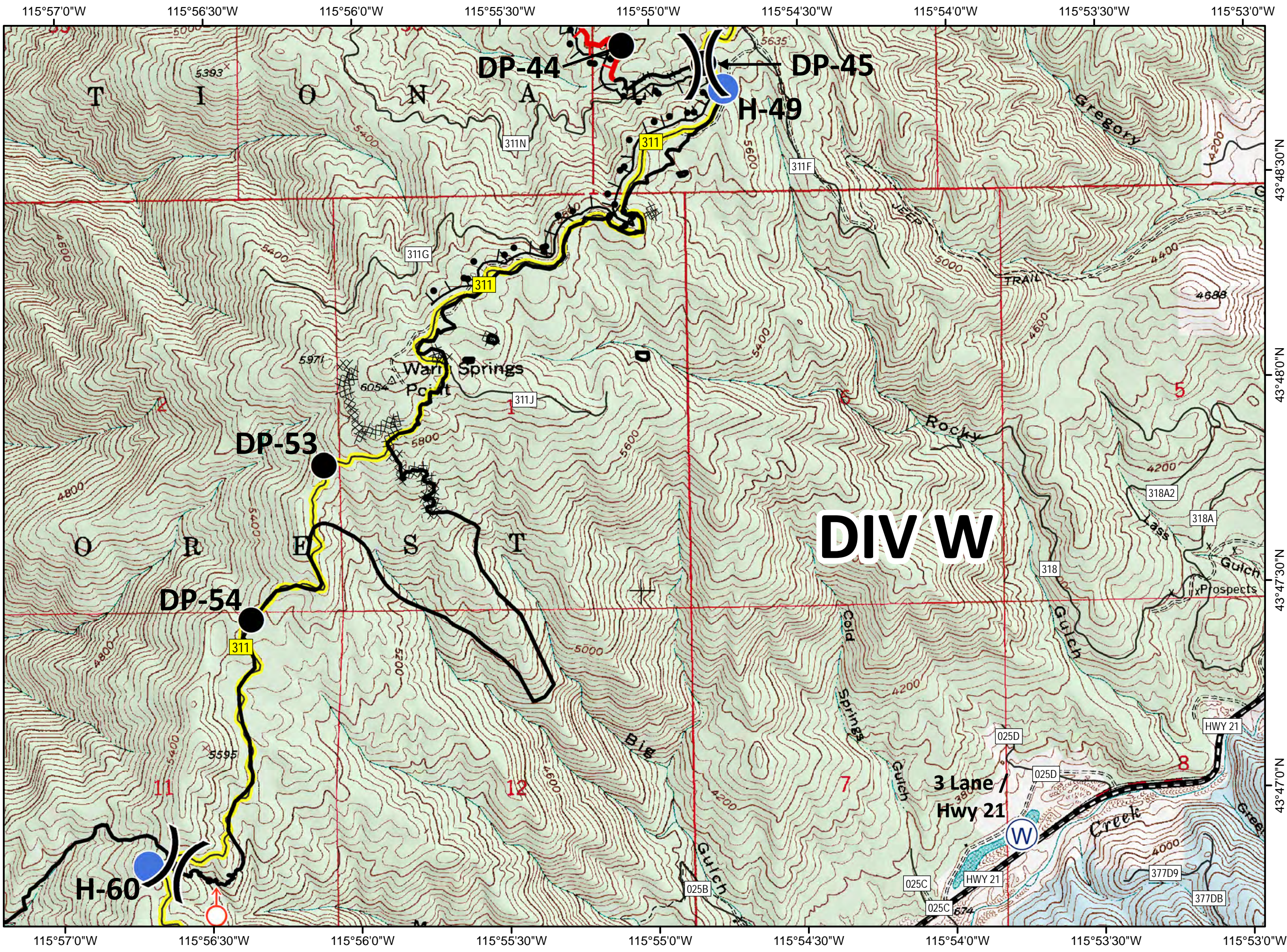
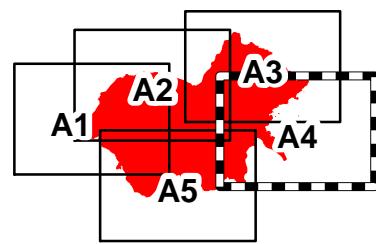
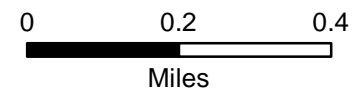


Walker Fire
 10/17/2015
 ID-SWS-001299
 J4C0
 5,978 GIS acres
 Perimeter as of
 10/16/2015 1730

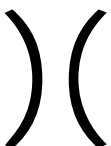







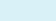
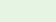
Tile A4

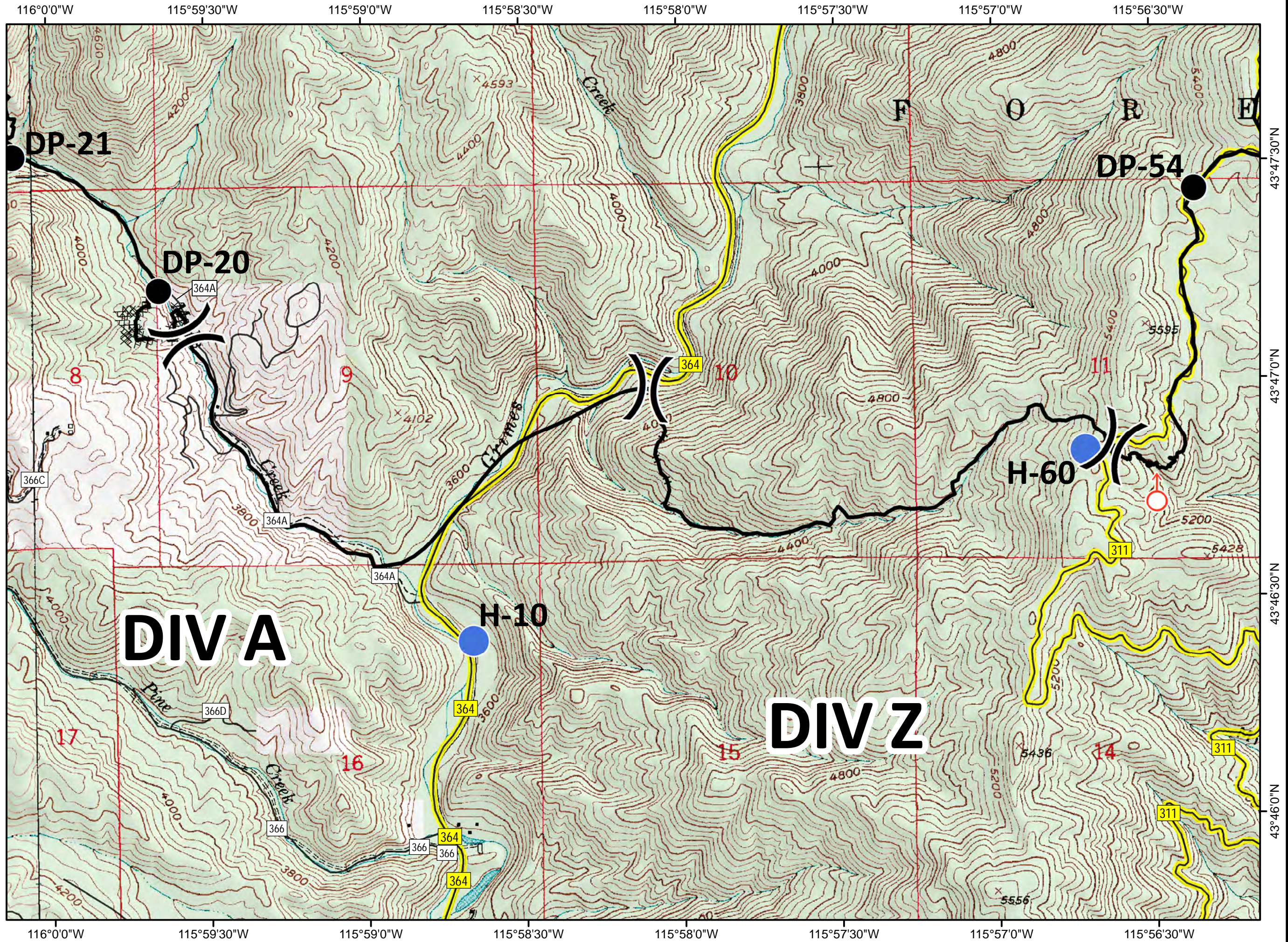
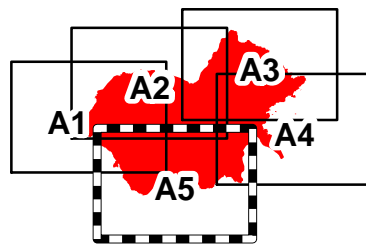
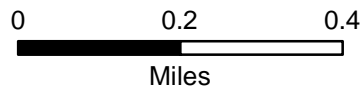
-  Division
-  Drop Point
-  Helispot
-  Spot Fire
-  Water Source
-  Road
-  Highway 21
-  Fire Access Route
-  Uncontrolled Fire Edge
-  Completed Dozer Line
-  Completed Line
-  Hand Line
-  Completed Burnout

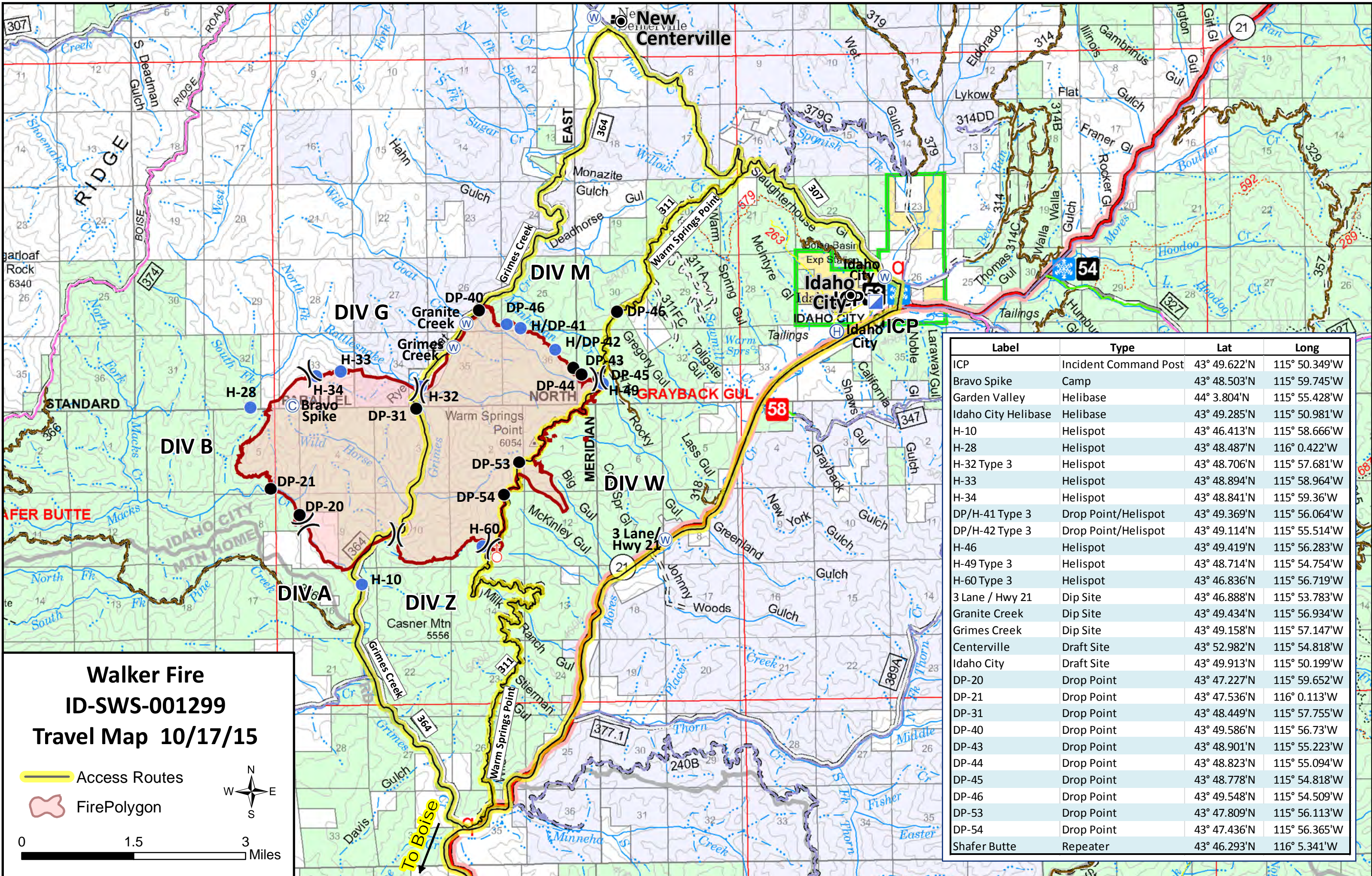
- Ownership
-  PRIVATE
 -  STATE
 -  USFS





Walker Fire
 10/17/2015
 ID-SWS-001299
 J4C0
 5,978 GIS acres
 Perimeter as of
 10/16/2015 1730
 Tile A5


-  Division
-  Drop Point
-  Helispot
-  Spot Fire
-  Road
-  Fire Access Route
-  Completed Dozer Line
-  Completed Line
-  Hand Line
- Ownership
 -  PRIVATE
 -  STATE
 -  USFS





Walker Fire
ID-SWS-001299
Travel Map 10/17/15

 Access Routes
 Fire Polygon


 0 1.5 3 Miles

Label	Type	Lat	Long
ICP	Incident Command Post	43° 49.622'N	115° 50.349'W
Bravo Spike	Camp	43° 48.503'N	115° 59.745'W
Garden Valley	Helibase	44° 3.804'N	115° 55.428'W
Idaho City Helibase	Helibase	43° 49.285'N	115° 50.981'W
H-10	Helispot	43° 46.413'N	115° 58.666'W
H-28	Helispot	43° 48.487'N	116° 0.422'W
H-32 Type 3	Helispot	43° 48.706'N	115° 57.681'W
H-33	Helispot	43° 48.894'N	115° 58.964'W
H-34	Helispot	43° 48.841'N	115° 59.36'W
DP/H-41 Type 3	Drop Point/Helispot	43° 49.369'N	115° 56.064'W
DP/H-42 Type 3	Drop Point/Helispot	43° 49.114'N	115° 55.514'W
H-46	Helispot	43° 49.419'N	115° 56.283'W
H-49 Type 3	Helispot	43° 48.714'N	115° 54.754'W
H-60 Type 3	Helispot	43° 46.836'N	115° 56.719'W
3 Lane / Hwy 21	Dip Site	43° 46.888'N	115° 53.783'W
Granite Creek	Dip Site	43° 49.434'N	115° 56.934'W
Grimes Creek	Dip Site	43° 49.158'N	115° 57.147'W
Centerville	Draft Site	43° 52.982'N	115° 54.818'W
Idaho City	Draft Site	43° 49.913'N	115° 50.199'W
DP-20	Drop Point	43° 47.227'N	115° 59.652'W
DP-21	Drop Point	43° 47.536'N	116° 0.113'W
DP-31	Drop Point	43° 48.449'N	115° 57.755'W
DP-40	Drop Point	43° 49.586'N	115° 56.73'W
DP-43	Drop Point	43° 48.901'N	115° 55.223'W
DP-44	Drop Point	43° 48.823'N	115° 55.094'W
DP-45	Drop Point	43° 48.778'N	115° 54.818'W
DP-46	Drop Point	43° 49.548'N	115° 54.509'W
DP-53	Drop Point	43° 47.809'N	115° 56.113'W
DP-54	Drop Point	43° 47.436'N	115° 56.365'W
Shafer Butte	Repeater	43° 46.293'N	116° 5.341'W