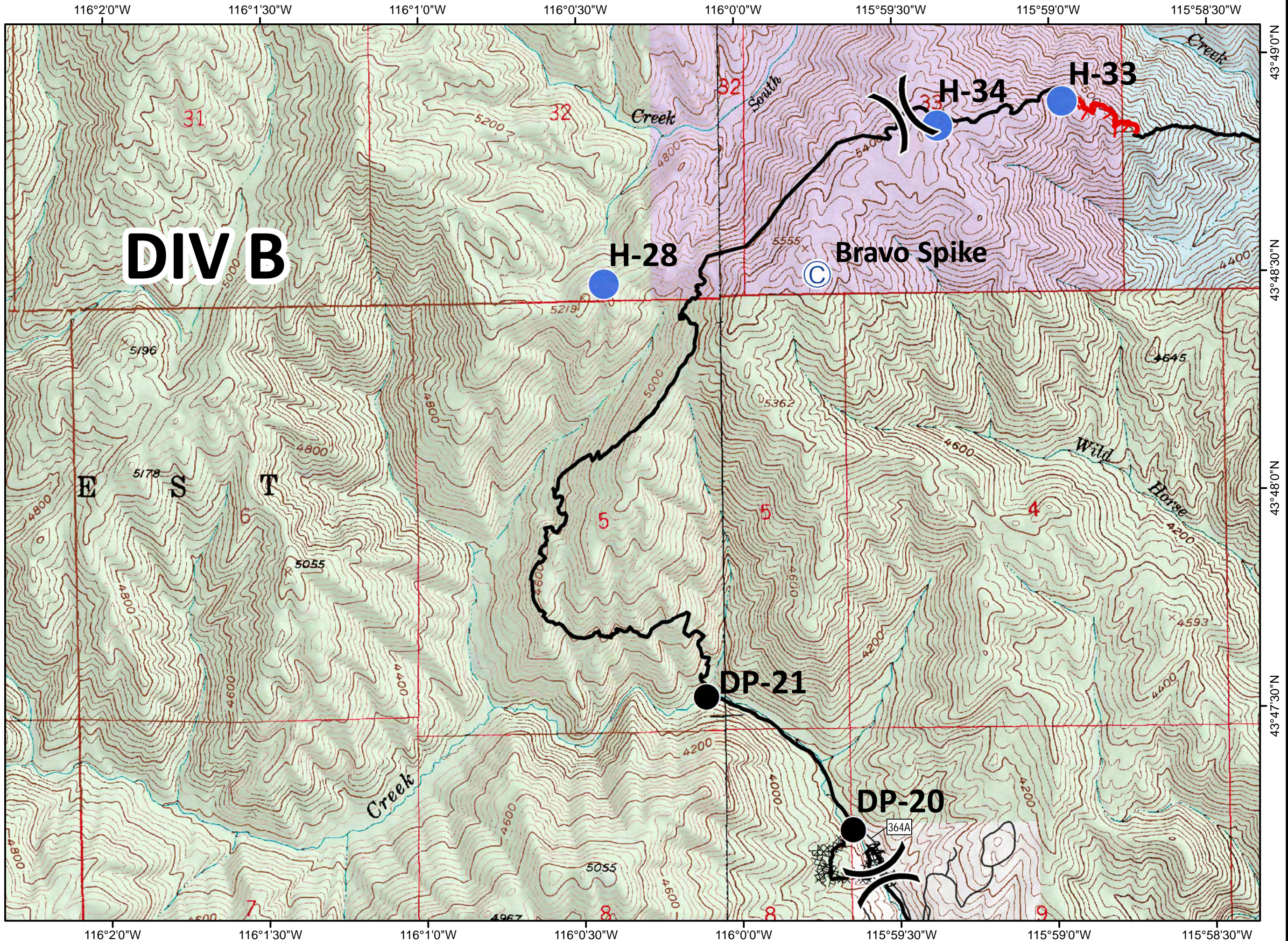
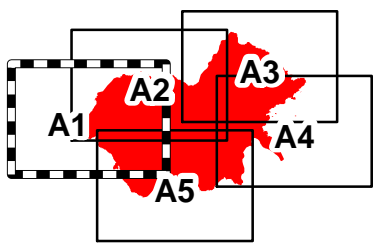
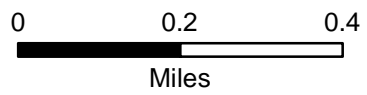


Walker Fire
 10/19/2015
 ID-SWS-001299
 J4C0
 5,963 GIS acres
 Perimeter as of
 10/17/2015 0830
 Tile A1

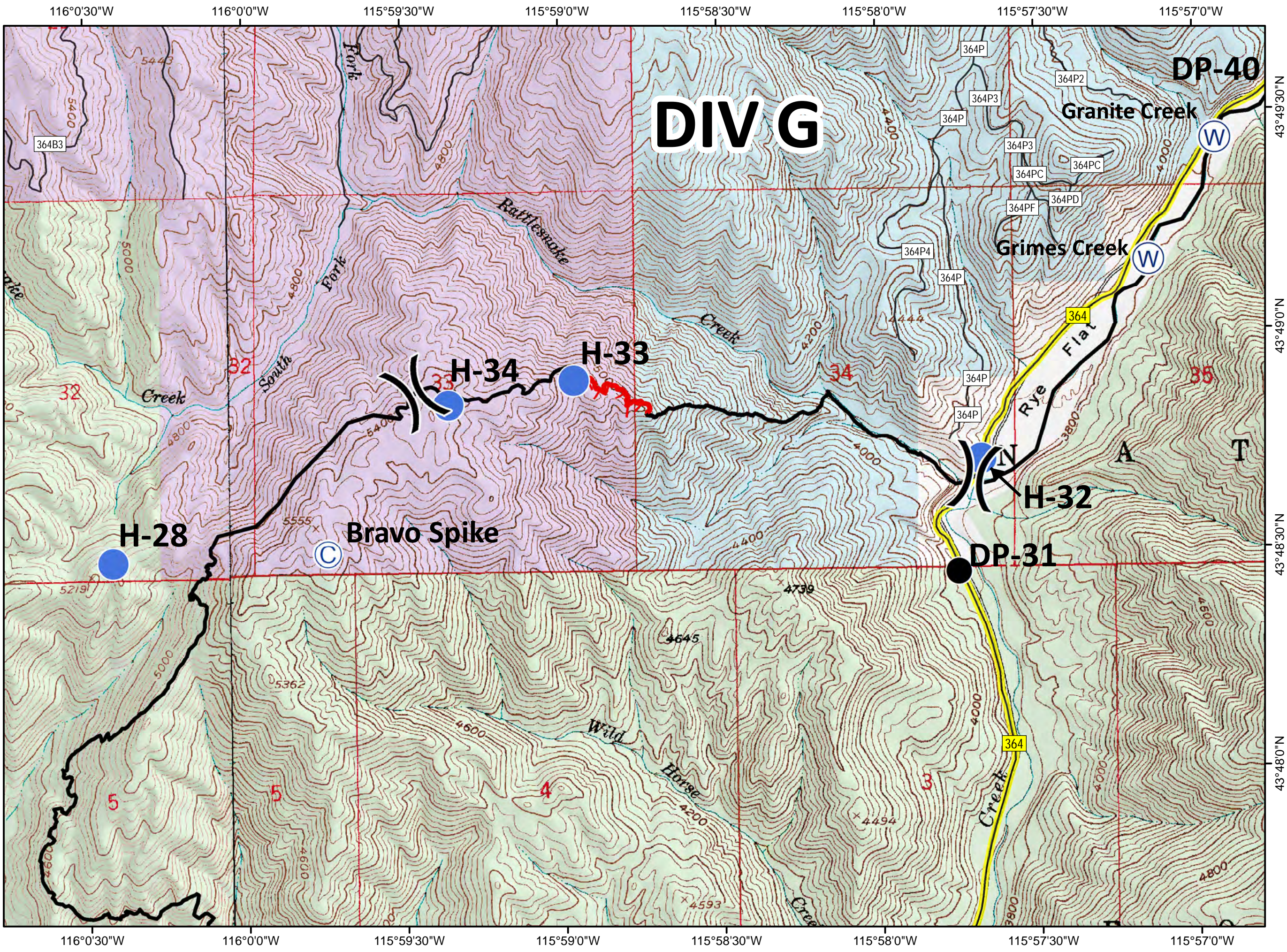
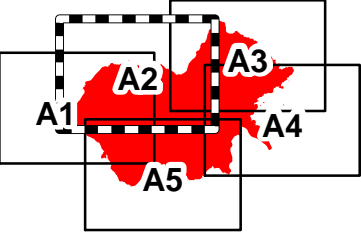
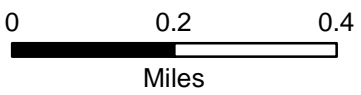
DIV B

-  Division
-  Camp
-  Drop Point
-  Helispot
-  Road
-  Uncontrolled Fire Edge
-  Completed Dozer Line
-  Completed Line
- Ownership
 - PRIVATE
 -  STATE
 -  USFS
 -  Pollatch



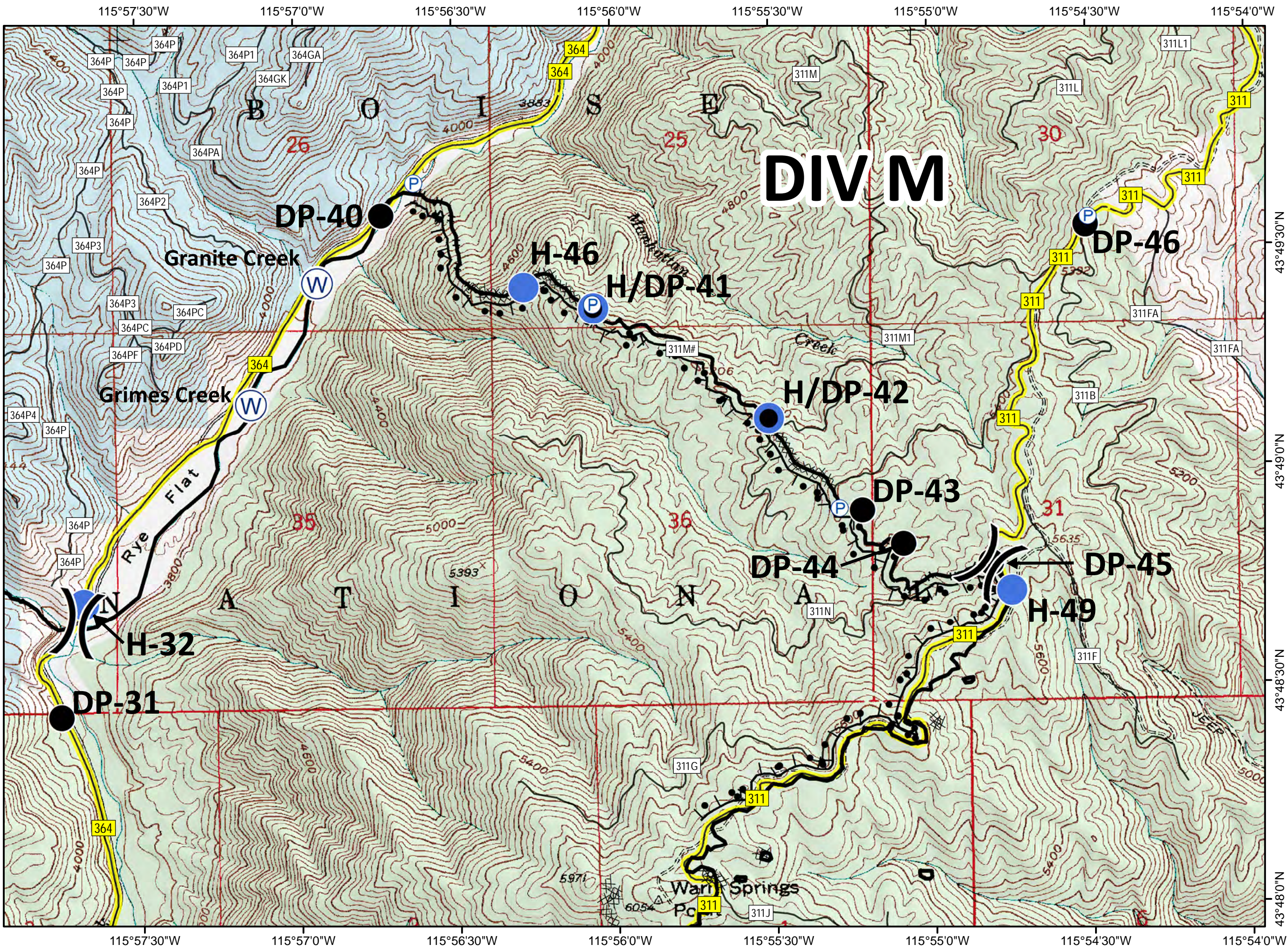
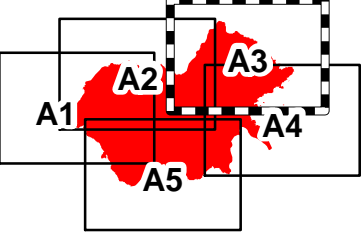
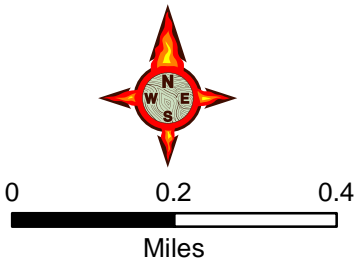
Walker Fire
 10/19/2015
 ID-SWS-001299
 J4C0
 5,963 GIS acres
 Perimeter as of
 10/17/2015 0830
 Tile A2

- Division
- Camp
- Drop Point
- Helispot
- Water Source
- Road
- Fire Access Route
- Uncontrolled Fire Edge
- Completed Line
- Ownership
 - PRIVATE
 - STATE
 - USFS
 - Pottlatch

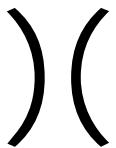











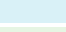
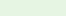


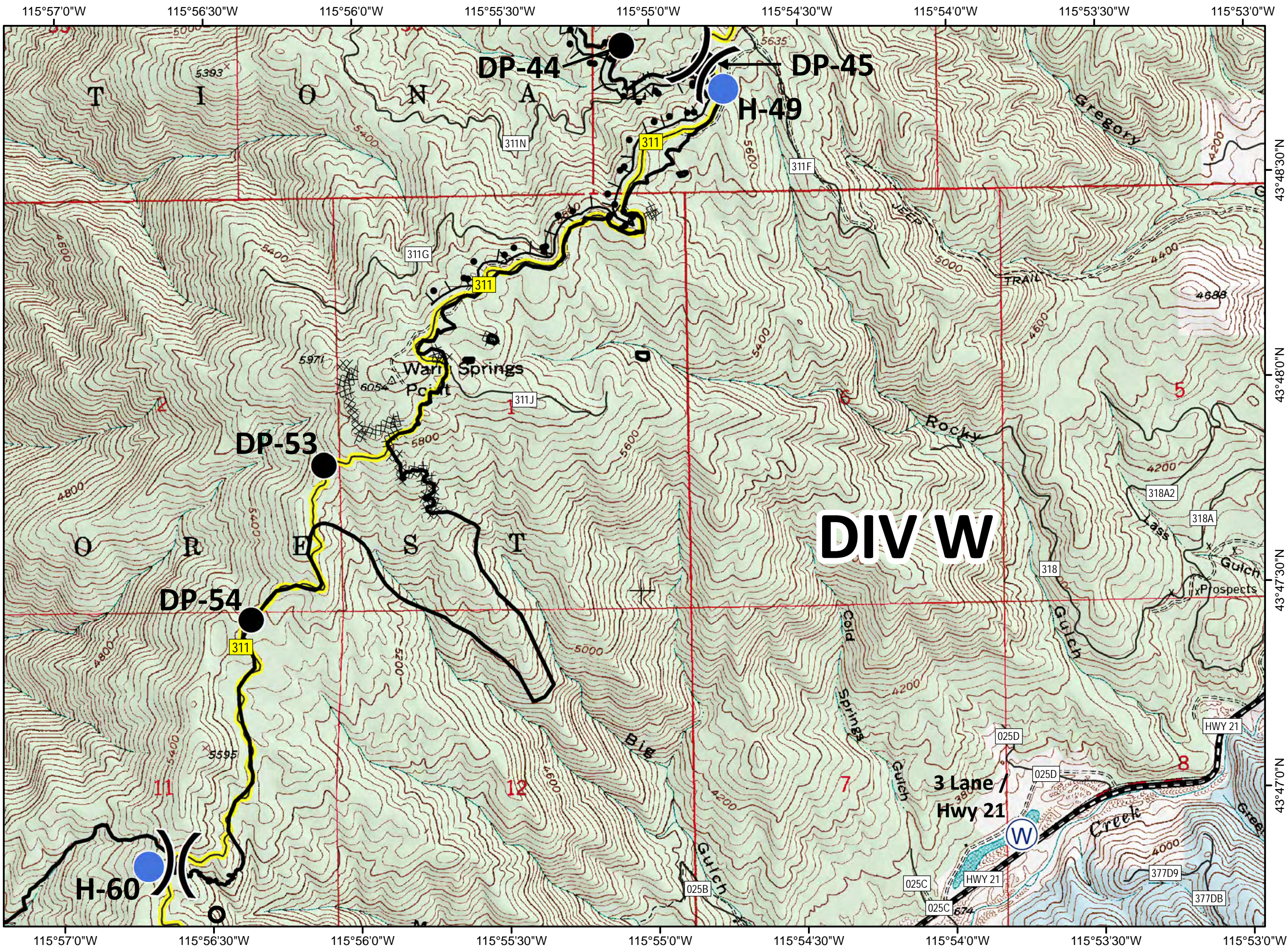
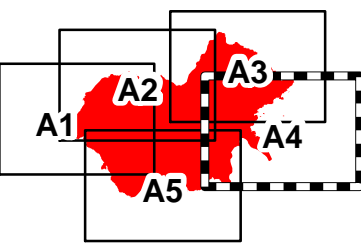
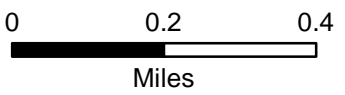
Walker Fire
 10/19/2015
 ID-SWS-001299
 J4C0
 5,963 GIS acres
 Perimeter as of
 10/17/2015 0830
 Tile A3

- Division
- Drop Point
- Helispot
- Pump
- Water Source
- Road
- Fire Access Route
- Completed Dozer Line
- Completed Line
- Hand Line
- Completed Burnout
- Ownership**
- PRIVATE
- STATE
- USFS



Walker Fire
 10/19/2015
 ID-SWS-001299
 J4C0
 5,963 GIS acres
 Perimeter as of
 10/17/2015 0830
 Tile A4

-  Division
-  Drop Point
-  Helispot
-  Water Source
-  Road
-  Highway 21
-  Fire Access Route
-  Completed Dozer Line
-  Completed Line
-  Hand Line
-  Completed Burnout
- Ownership**
-  PRIVATE
-  STATE
-  USFS



Walker Fire
 10/19/2015
 ID-SWS-001299
 J4C0
 5,963 GIS acres
 Perimeter as of
 10/17/2015 0830
 Tile A5

-  Division
-  Drop Point
-  Helispot
-  Road
-  Fire Access Route
-  Completed Dozer Line
-  Completed Line
-  Hand Line
- Ownership
 -  PRIVATE
 -  STATE
 -  USFS

