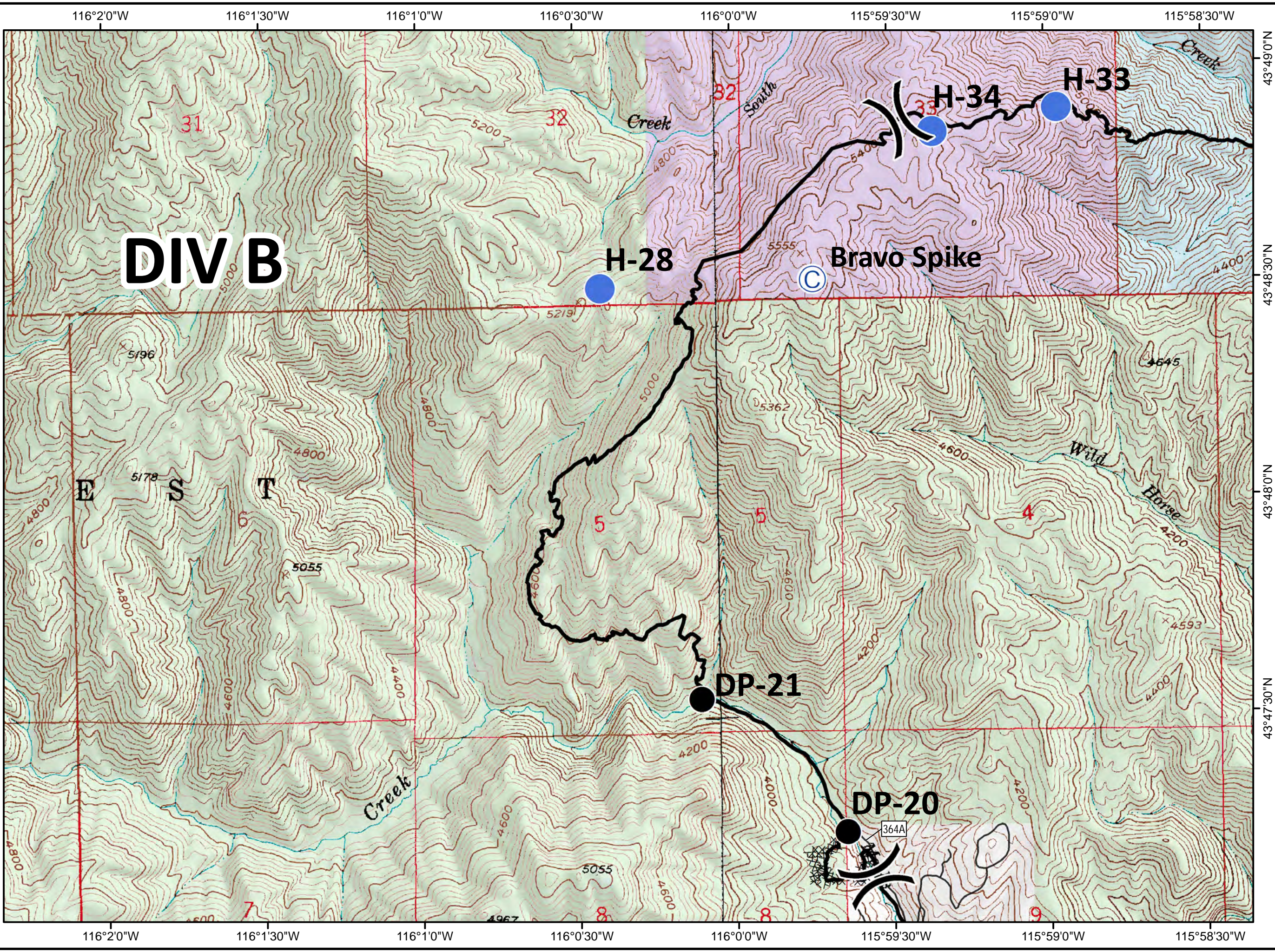
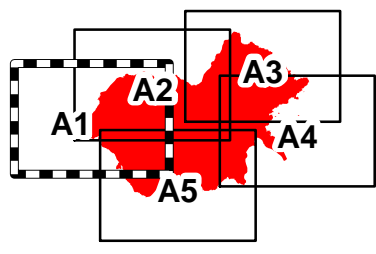
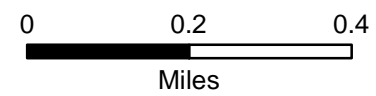


**Walker Fire**  
 10/20/2015  
 ID-SWS-001299  
 J4C0  
 5,963 GIS acres  
 Perimeter as of  
 10/17/2015 0830  
 Tile A1

**DIV B**

-  Division
-  Camp
-  Drop Point
-  Helispot
-  Road
-  Completed Dozer Line
-  Completed Line
- Ownership
  -  PRIVATE
  -  STATE
  -  USFS
  -  Pottlatch



**Walker Fire**  
 10/20/2015  
 ID-SWS-001299  
 J4C0  
 5,963 GIS acres  
 Perimeter as of  
 10/17/2015 0830  
 Tile A2

) ( Division

Ⓒ Camp

● Drop Point

● Helispot

⒱ Water Source

— Road

— Fire Access Route

— Completed Line

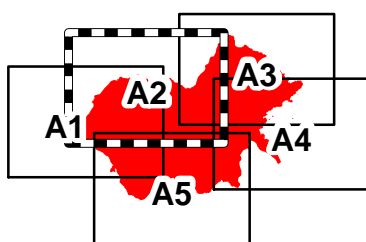
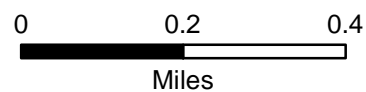
Ownership

PRIVATE

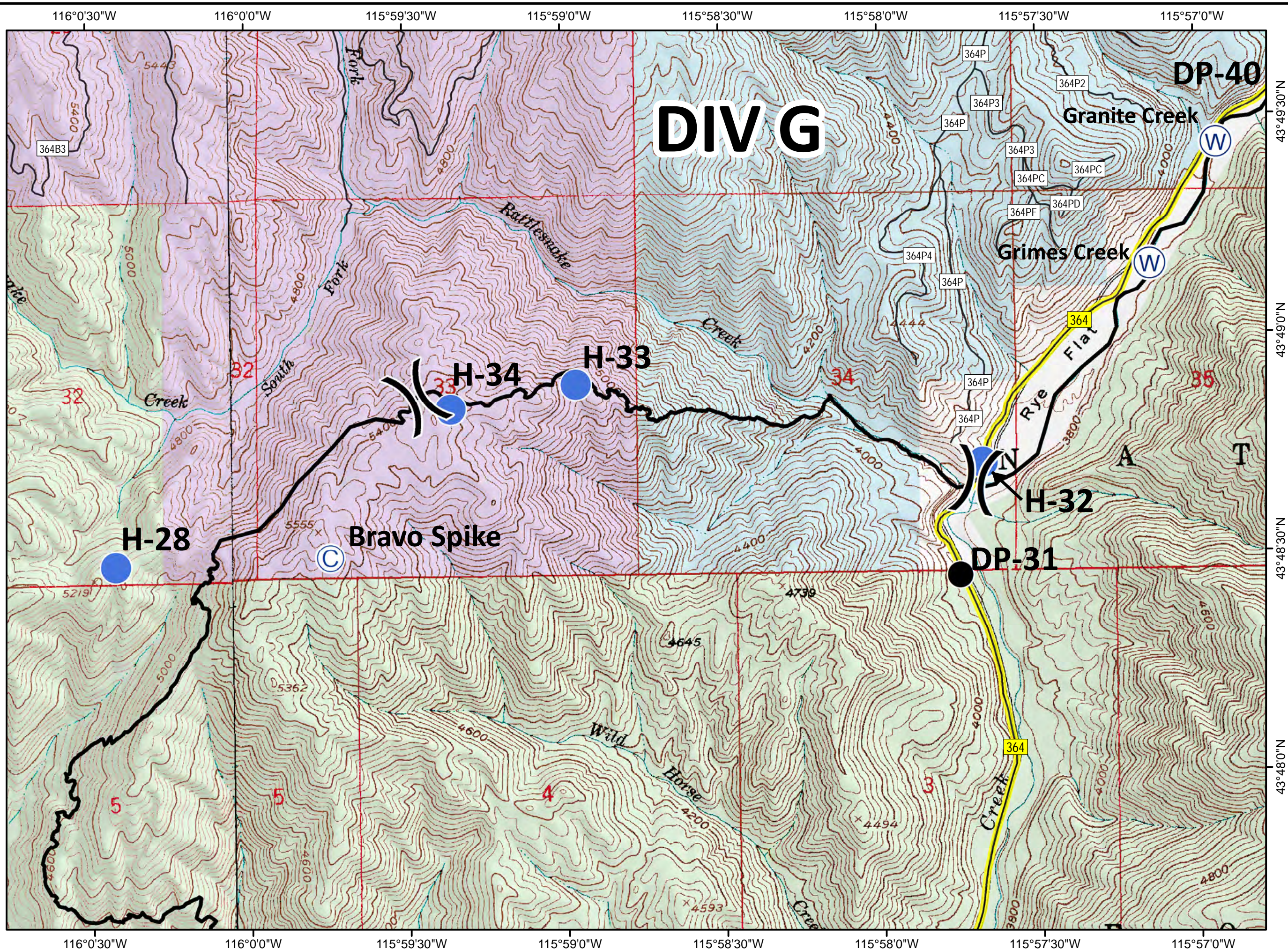
STATE

USFS

Potlatch



**DIV G**



# Walker Fire

10/20/2015

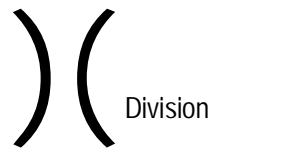
ID-SWS-001299

J4C0

5,963 GIS acres

Perimeter as of  
10/17/2015 0830

Tile A3



● Drop Point

● Helispot

Ⓟ Pump

Ⓜ Water Source

— Road

— Fire Access Route

XXXXXX Completed Dozer Line

— Completed Line

H · H · Hand Line

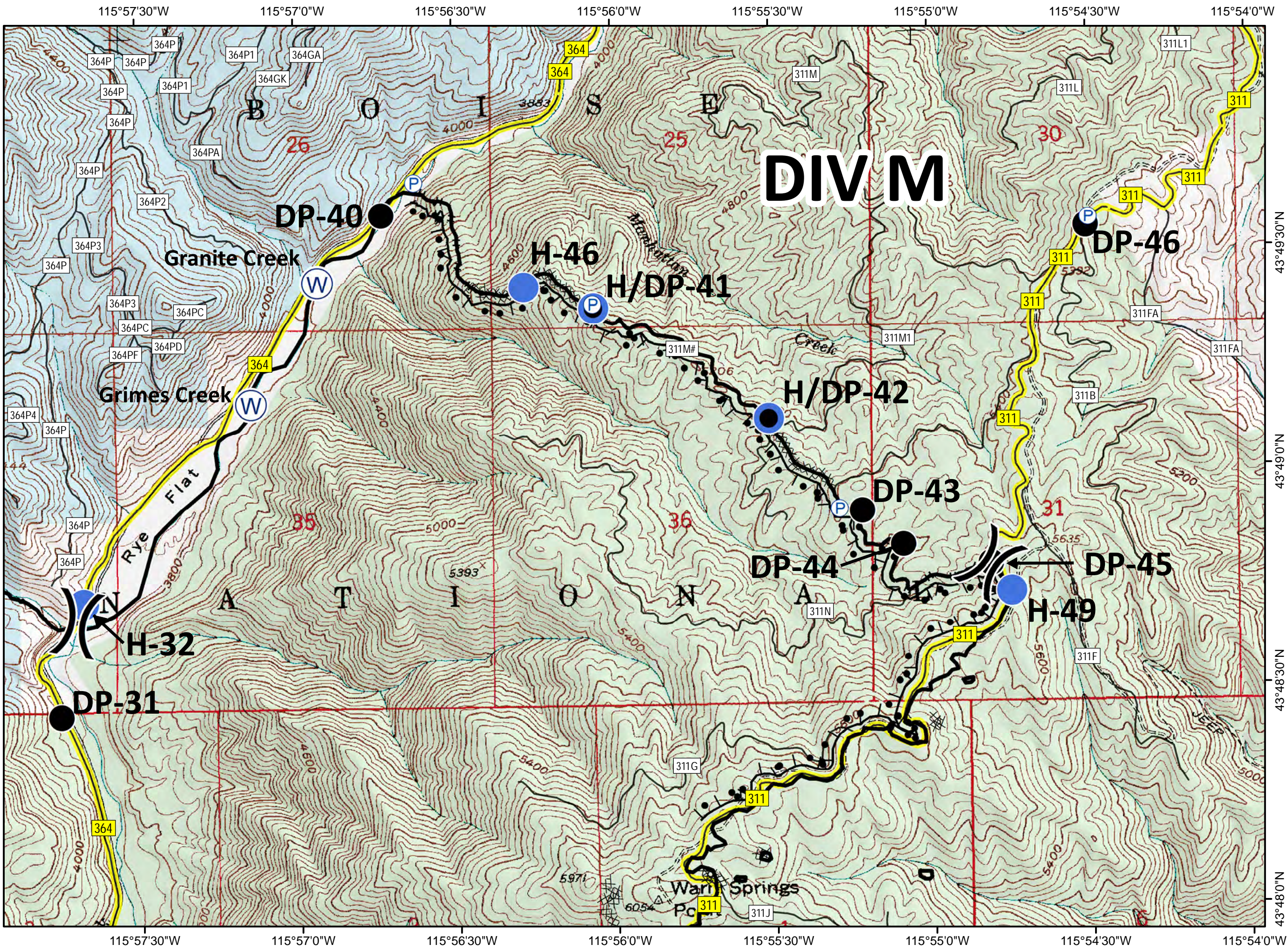
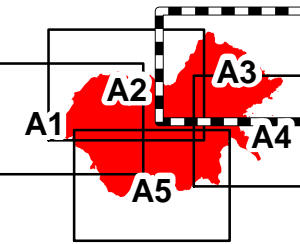
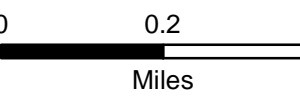
— Completed Burnout

Ownership

PRIVATE

STATE

USFS



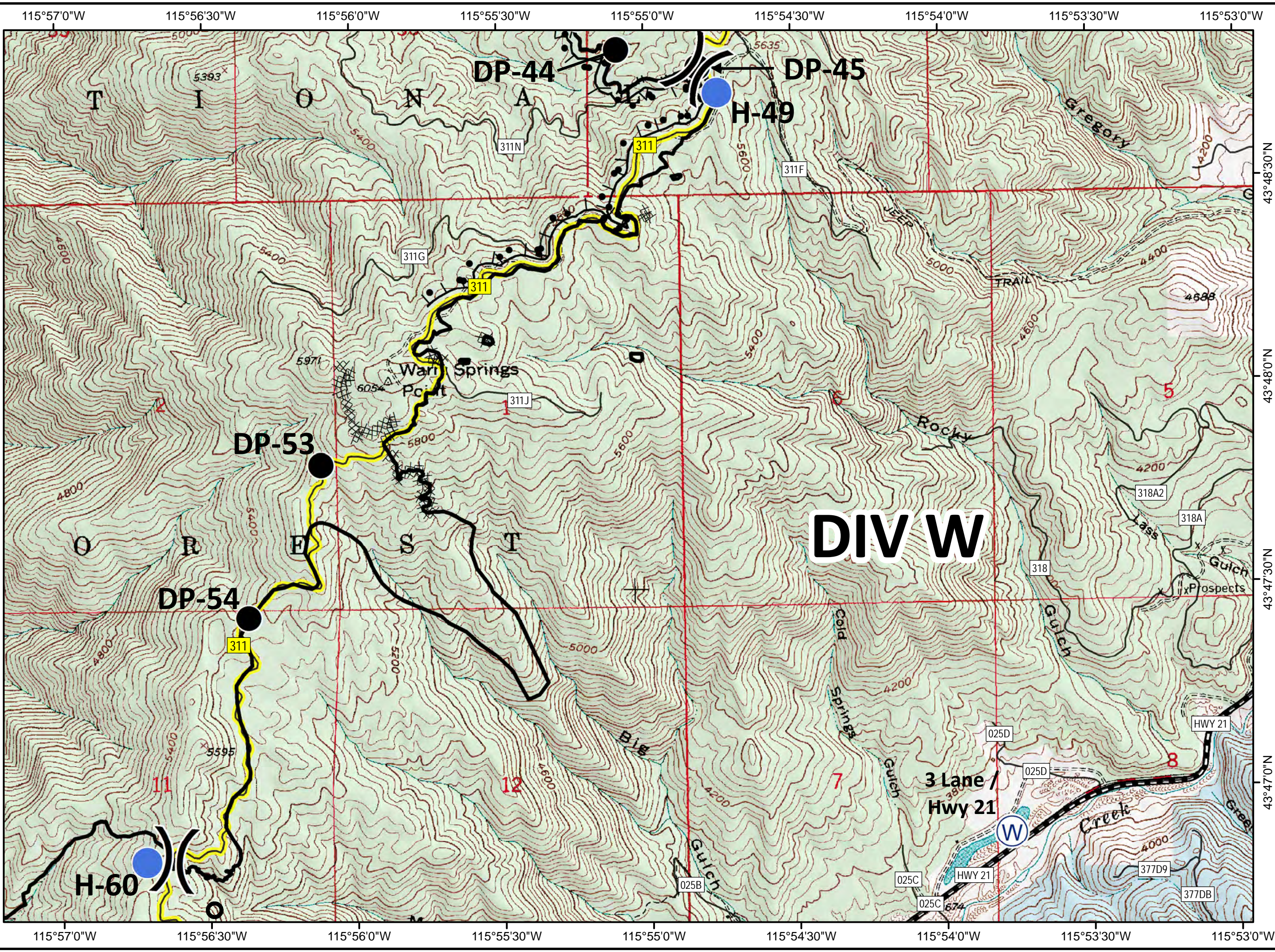
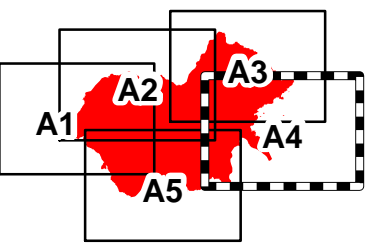
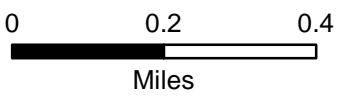
# Walker Fire

10/20/2015  
ID-SWS-001299  
J4C0  
5,963 GIS acres  
Perimeter as of  
10/17/2015 0830

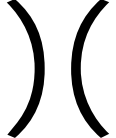









Tile A4

- Division
- Drop Point
- Helispot
- Water Source
- Road
- Highway 21
- Fire Access Route
- Completed Dozer Line
- Completed Line
- Hand Line
- Completed Burnout

- Ownership
- PRIVATE
  - STATE
  - USFS



**Walker Fire**  
 10/20/2015  
 ID-SWS-001299  
 J4C0  
 5,963 GIS acres  
 Perimeter as of  
 10/17/2015 0830  
 Tile A5

-  Division
-  Drop Point
-  Helispot
-  Road
-  Fire Access Route
-  Completed Dozer Line
-  Completed Line
-  Hand Line
- Ownership
  -  PRIVATE
  -  STATE
  -  USFS

