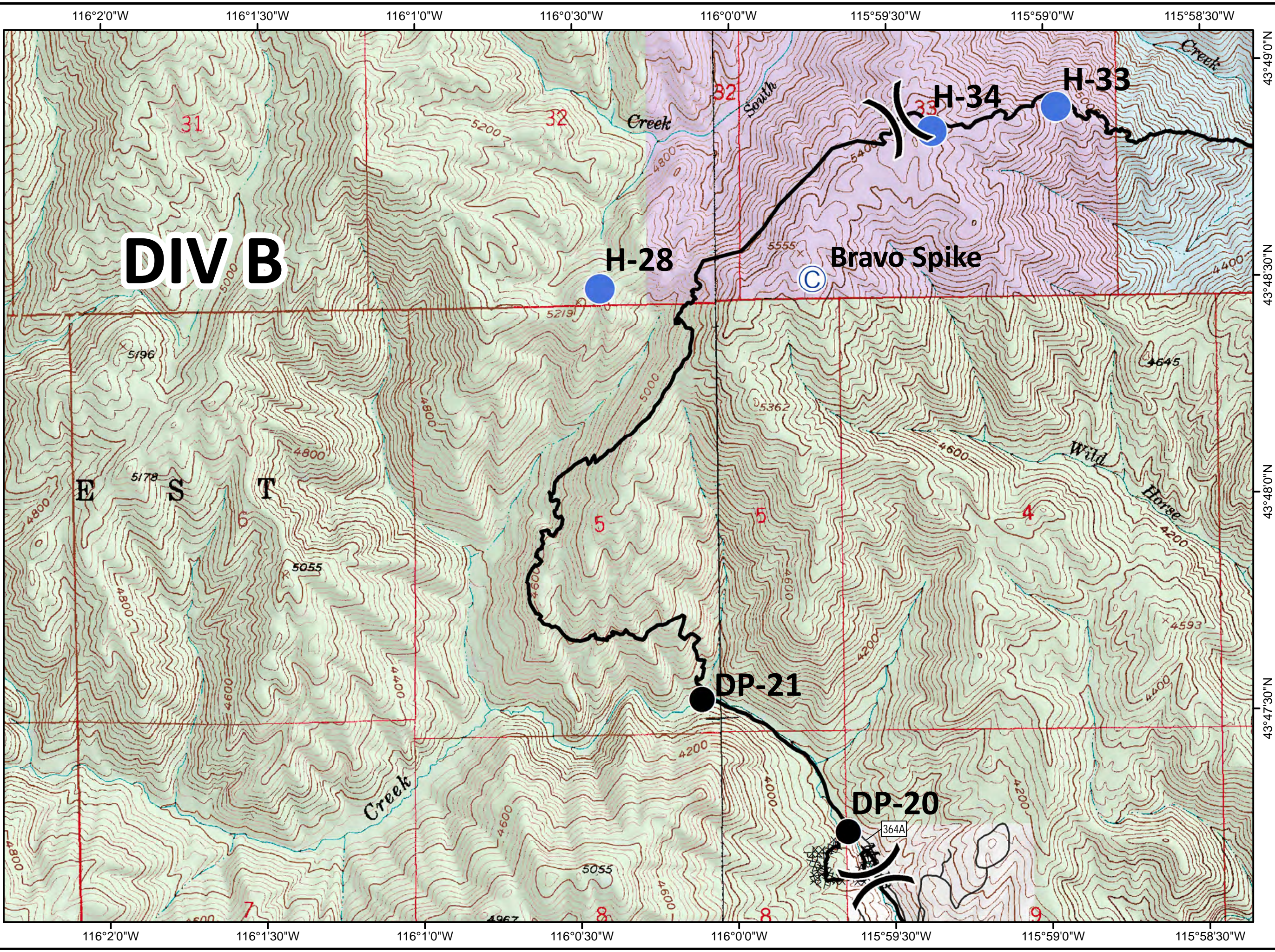
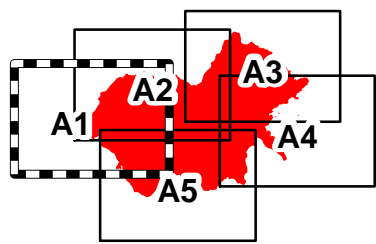
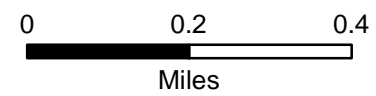


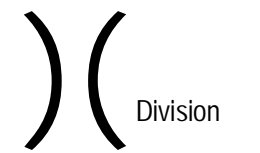
Walker Fire
 10/20/2015
 ID-SWS-001299
 J4C0
 5,963 GIS acres
 Perimeter as of
 10/17/2015 0830
 Tile A1

DIV B

-  Division
-  Camp
-  Drop Point
-  Helispot
-  Road
-  Completed Dozer Line
-  Completed Line
- Ownership
 - PRIVATE
 -  STATE
 -  USFS
 -  Pottlatch



Walker Fire
 10/20/2015
 ID-SWS-001299
 J4C0
 5,963 GIS acres
 Perimeter as of
 10/17/2015 0830
 Tile A2

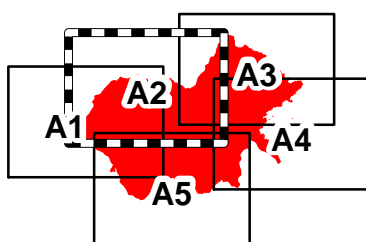
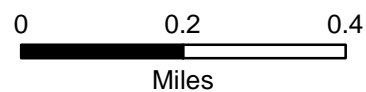


Division

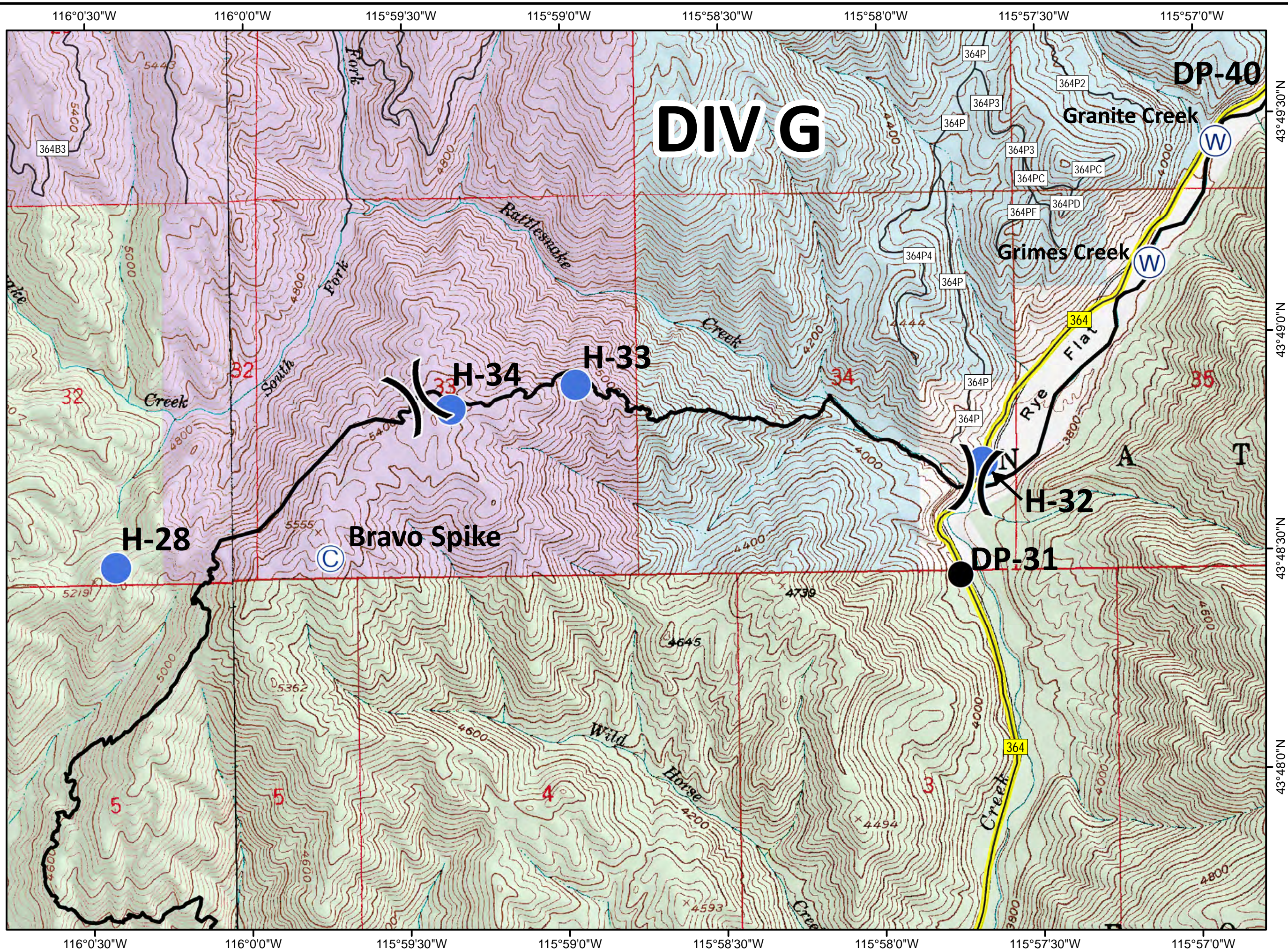
- Camp
- Drop Point
- Helispot
- Water Source

- Road
- Fire Access Route
- Completed Line

- Ownership
- PRIVATE
 - STATE
 - USFS
 - Potlatch



DIV G



Walker Fire

10/20/2015

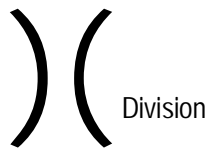
ID-SWS-001299

J4C0

5,963 GIS acres

Perimeter as of
10/17/2015 0830

Tile A3



Division



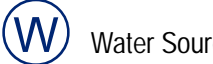
Drop Point



Helispot



Pump



Water Source



Road



Fire Access Route



Completed Dozer Line



Completed Line



Hand Line



Completed Burnout

Ownership

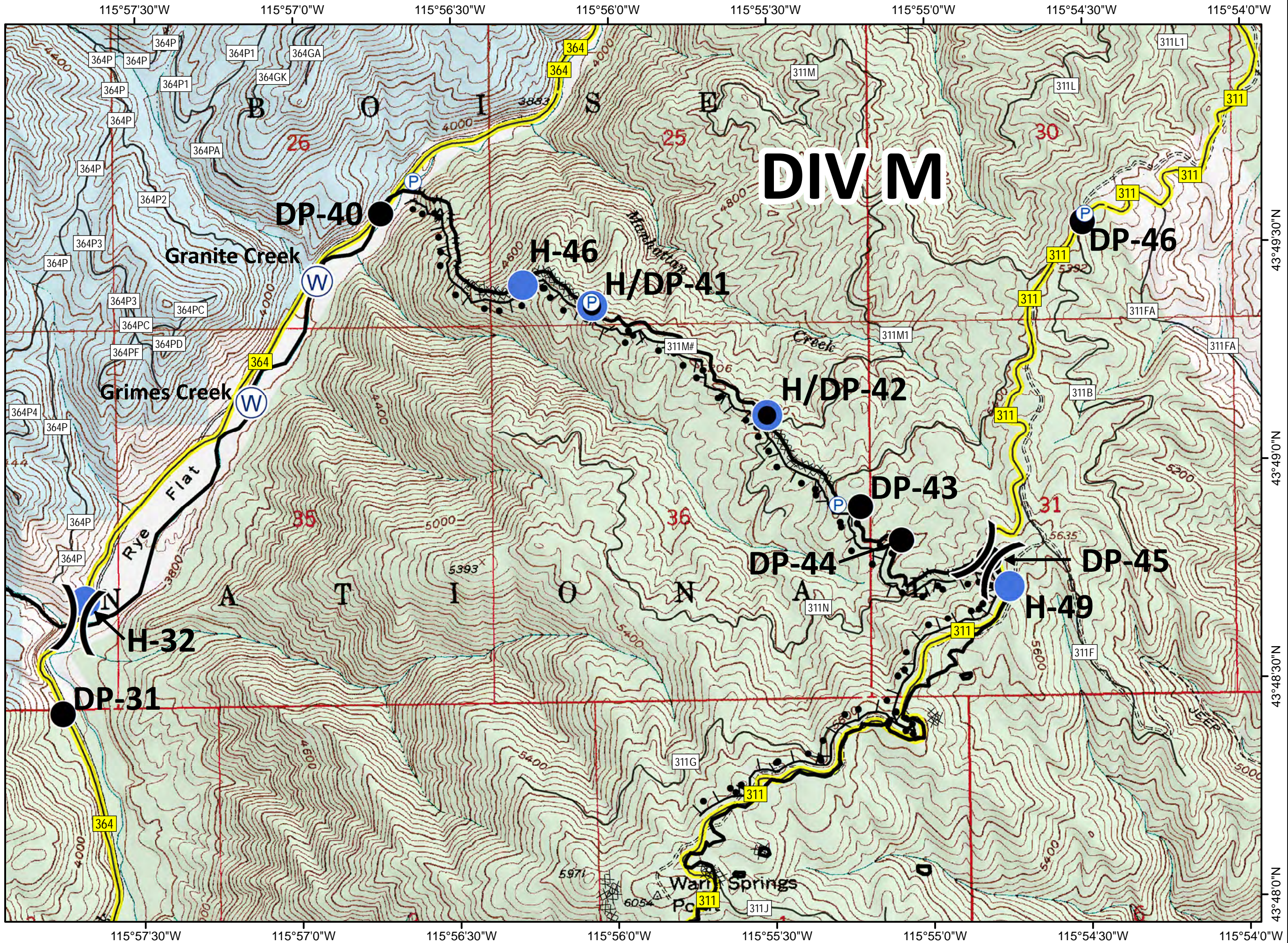
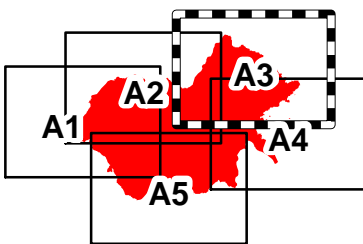
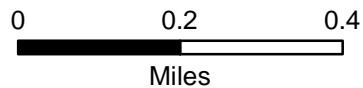
PRIVATE



STATE



USFS



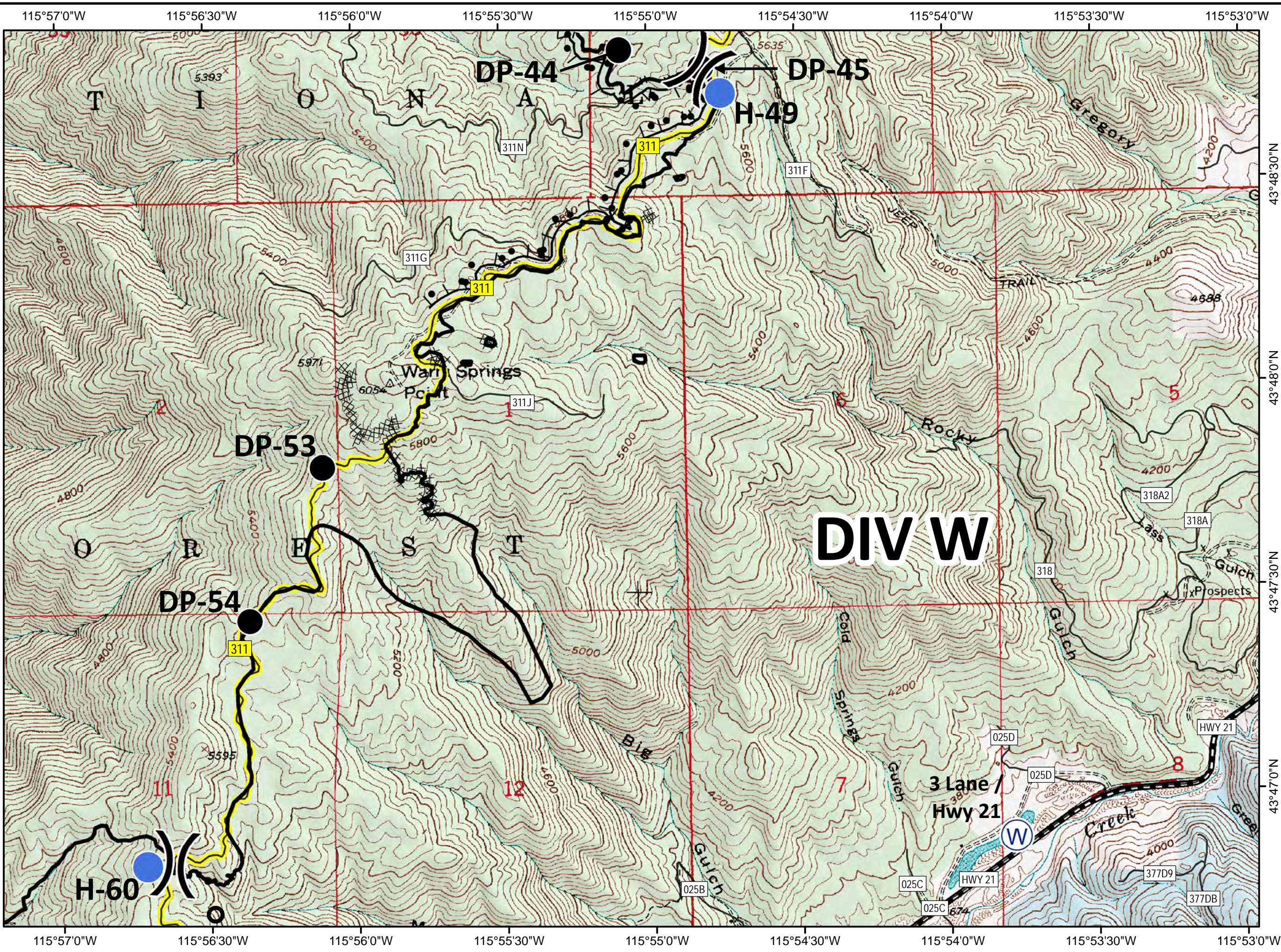
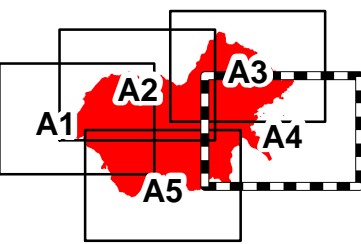
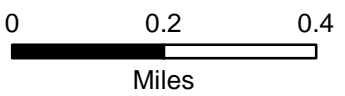
Walker Fire

10/20/2015
ID-SWS-001299
J4C0
5,963 GIS acres
Perimeter as of
10/17/2015 0830

Tile A4

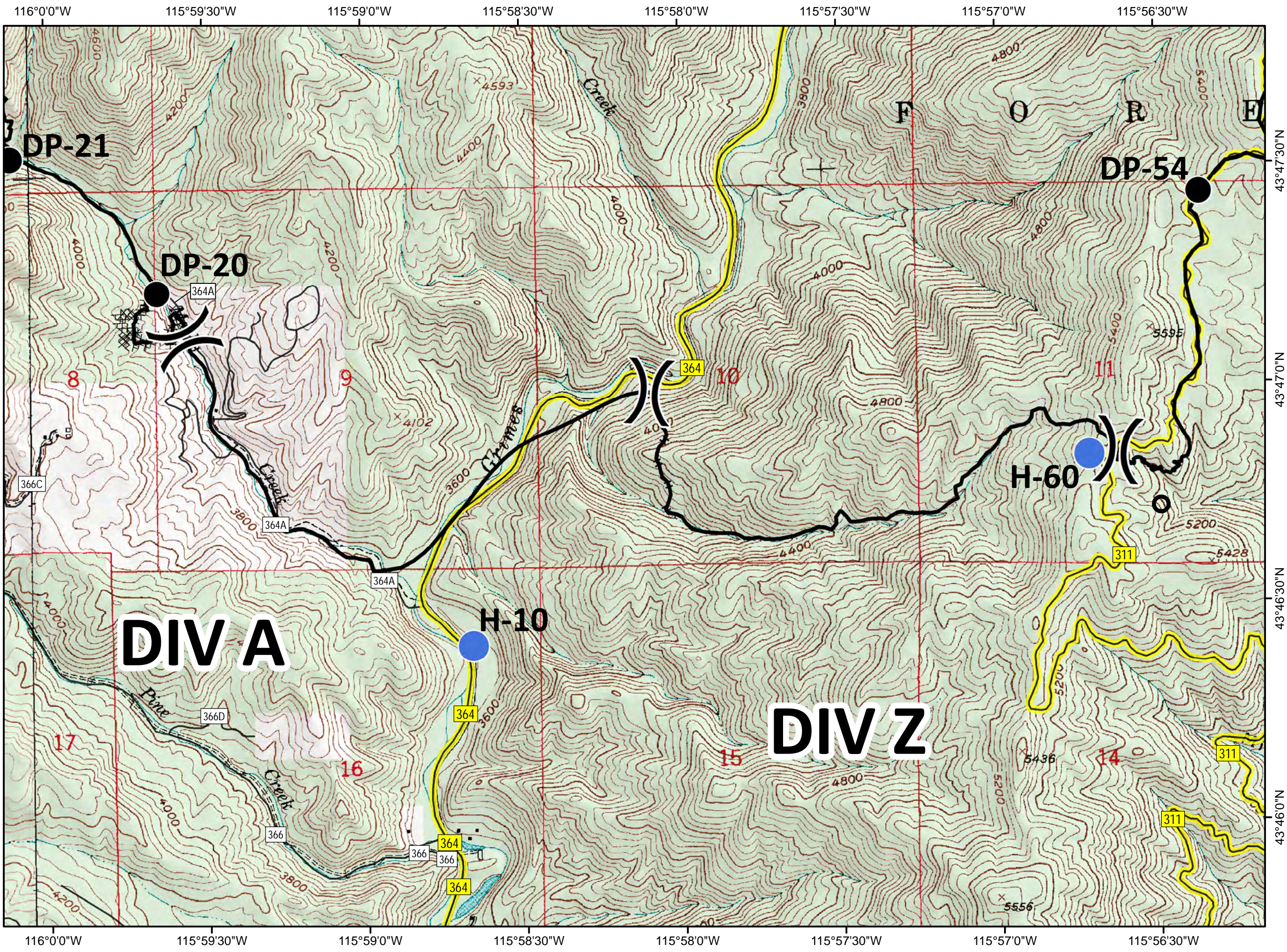
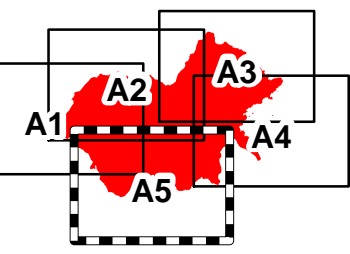
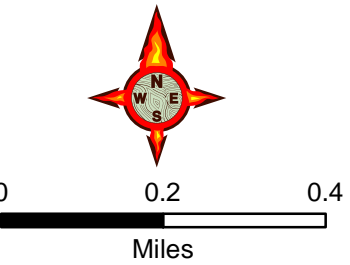
- Division
- Drop Point
- Helispot
- Water Source
- Road
- Highway 21
- Fire Access Route
- Completed Dozer Line
- Completed Line
- Hand Line
- Completed Burnout

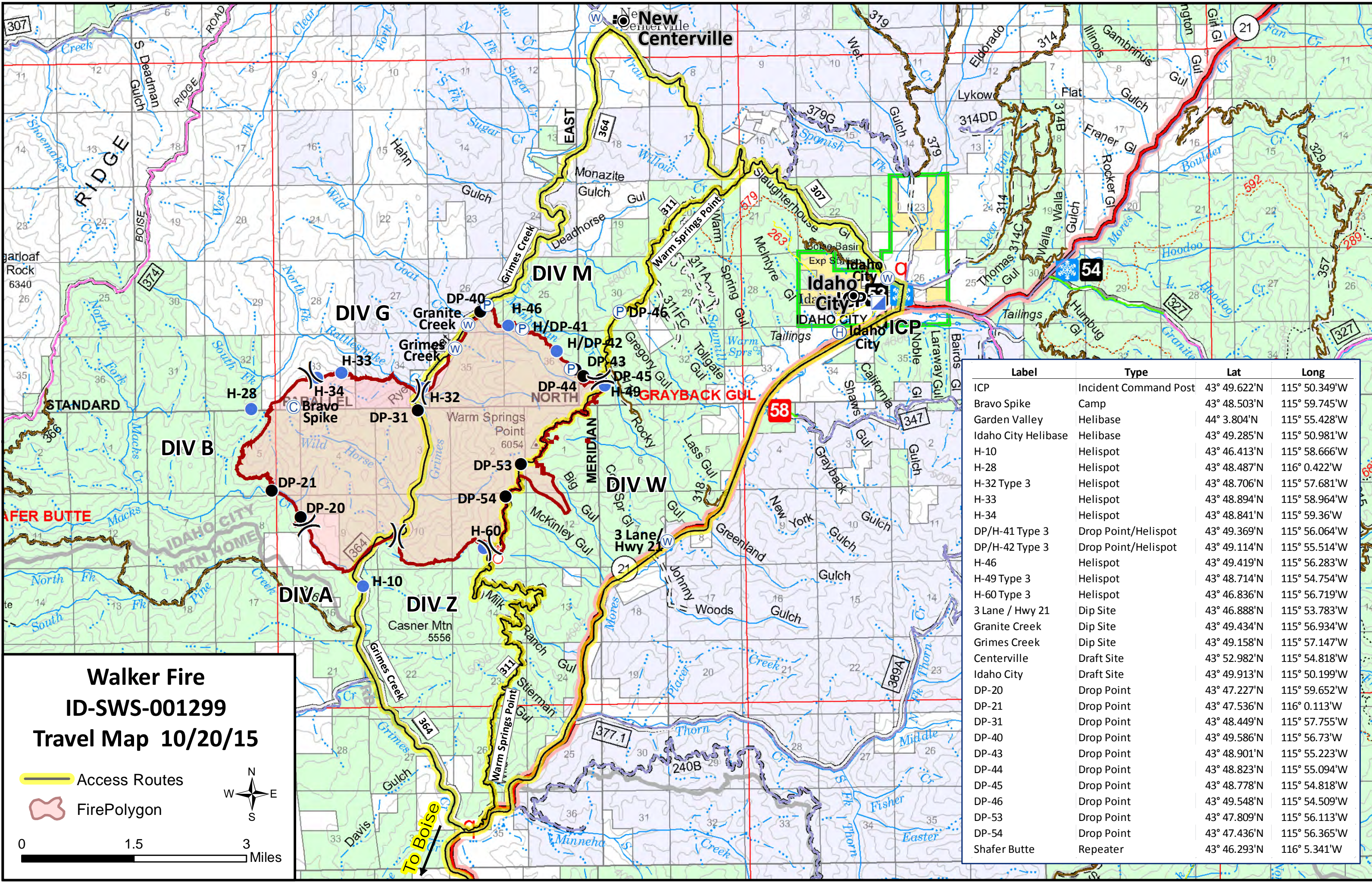
- Ownership
- PRIVATE
 - STATE
 - USFS





Walker Fire
 10/20/2015
 ID-SWS-001299
 J4C0
 5,963 GIS acres
 Perimeter as of
 10/17/2015 0830
 Tile A5


- Division
- Drop Point
- Helispot
- Road
- Fire Access Route
- Completed Dozer Line
- Completed Line
- Hand Line
- Ownership**
- PRIVATE
- STATE
- USFS





Walker Fire
ID-SWS-001299
Travel Map 10/20/15

 Access Routes
 Fire Polygon


 0 1.5 3 Miles

Label	Type	Lat	Long
ICP	Incident Command Post	43° 49.622'N	115° 50.349'W
Bravo Spike	Camp	43° 48.503'N	115° 59.745'W
Garden Valley	Helibase	44° 3.804'N	115° 55.428'W
Idaho City Helibase	Helibase	43° 49.285'N	115° 50.981'W
H-10	Helispot	43° 46.413'N	115° 58.666'W
H-28	Helispot	43° 48.487'N	116° 0.422'W
H-32 Type 3	Helispot	43° 48.706'N	115° 57.681'W
H-33	Helispot	43° 48.894'N	115° 58.964'W
H-34	Helispot	43° 48.841'N	115° 59.36'W
DP/H-41 Type 3	Drop Point/Helispot	43° 49.369'N	115° 56.064'W
DP/H-42 Type 3	Drop Point/Helispot	43° 49.114'N	115° 55.514'W
H-46	Helispot	43° 49.419'N	115° 56.283'W
H-49 Type 3	Helispot	43° 48.714'N	115° 54.754'W
H-60 Type 3	Helispot	43° 46.836'N	115° 56.719'W
3 Lane / Hwy 21	Dip Site	43° 46.888'N	115° 53.783'W
Granite Creek	Dip Site	43° 49.434'N	115° 56.934'W
Grimes Creek	Dip Site	43° 49.158'N	115° 57.147'W
Centerville	Draft Site	43° 52.982'N	115° 54.818'W
Idaho City	Draft Site	43° 49.913'N	115° 50.199'W
DP-20	Drop Point	43° 47.227'N	115° 59.652'W
DP-21	Drop Point	43° 47.536'N	116° 0.113'W
DP-31	Drop Point	43° 48.449'N	115° 57.755'W
DP-40	Drop Point	43° 49.586'N	115° 56.73'W
DP-43	Drop Point	43° 48.901'N	115° 55.223'W
DP-44	Drop Point	43° 48.823'N	115° 55.094'W
DP-45	Drop Point	43° 48.778'N	115° 54.818'W
DP-46	Drop Point	43° 49.548'N	115° 54.509'W
DP-53	Drop Point	43° 47.809'N	115° 56.113'W
DP-54	Drop Point	43° 47.436'N	115° 56.365'W
Shafer Butte	Repeater	43° 46.293'N	116° 5.341'W