

116°1'W 116°0'W 115°59'W 115°58'W 115°57'W 115°56'W 115°55'W

Walker Fire
ID-SWS-1299
Heat Acres: 4,202
Infrared Interpretation
Imagery Date:
10/13/2015 2007 Hrs



43°49'N

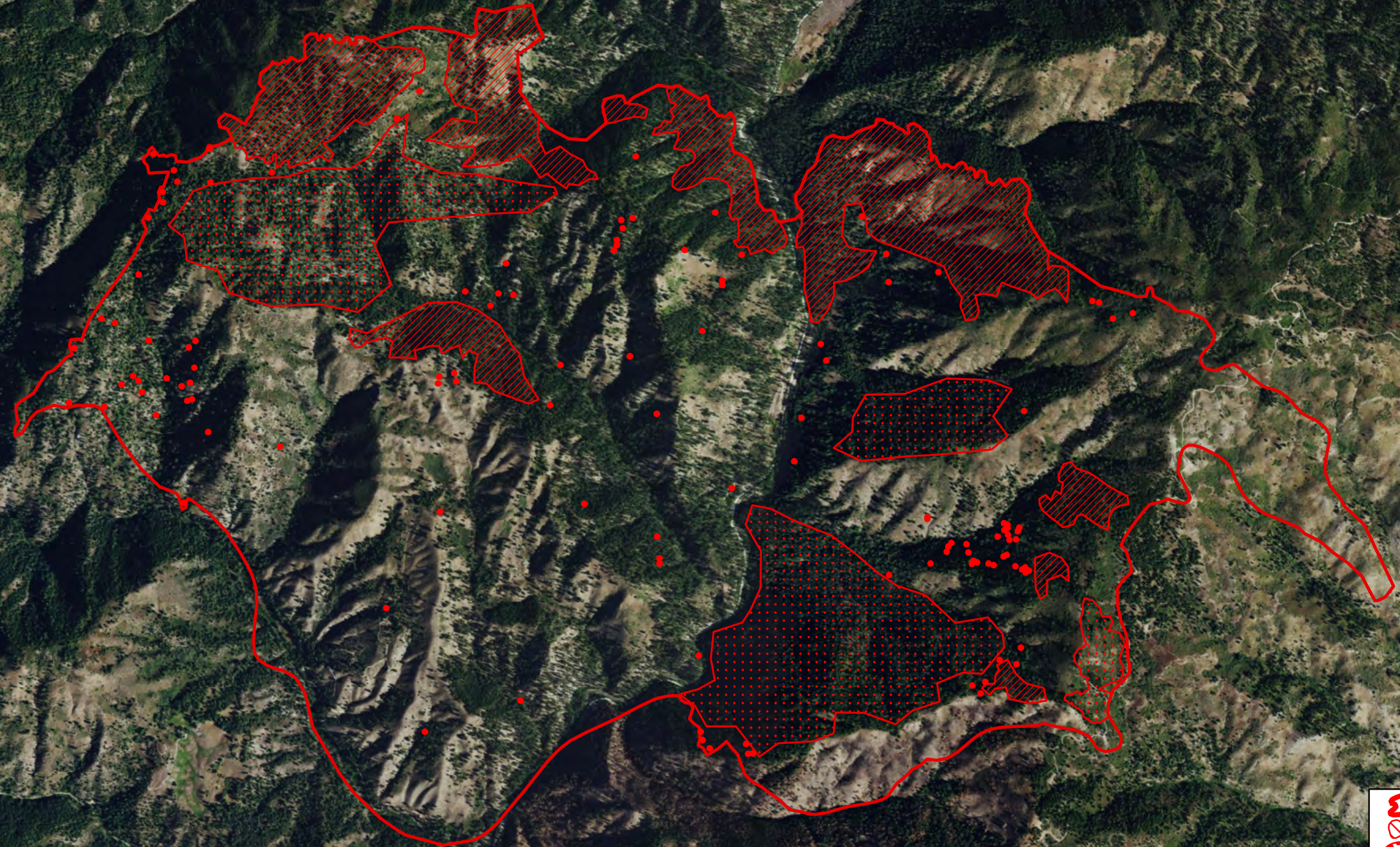
43°48'N




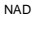
43°47'N

43°49'N

43°48'N

43°47'N



-  Heat Perimeter
 -  Intense Heat Areas
 -  Scattered Heat Areas
 -  Isolated Heat Sources
- NAD 1983 UTM Zone 11N

IRIN: Kyle Felker
Map produced:
10/13/2015 2124 hrs

116°2'W 116°1'W 116°0'W 115°59'W 115°58'W 115°57'W 115°56'W 115°55'W

Source: Esri, DigitalGlobe, GeoEye, Earthstar Geographics, CNES/Airbus DS, USDA, USGS, AEX, Getmapping, Aerogrid, IGN, IGC, swisstopo, SNT, CNRS, Swireinfo, etc.