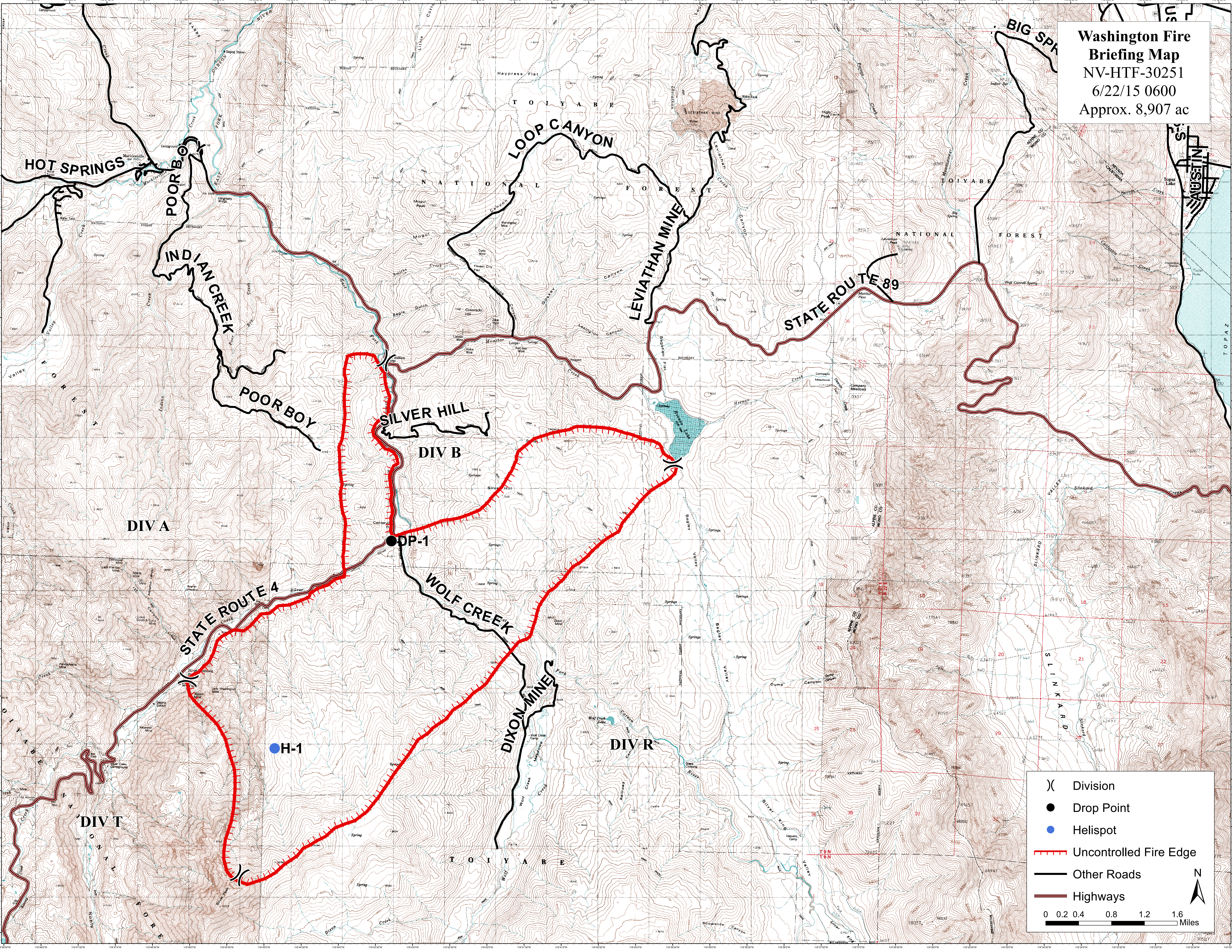


Washington Fire  
Briefing Map  
NV-HTF-30251  
6/22/15 0600  
Approx. 8,907 ac



( ) Division  
● Drop Point  
● Helispot  
- - - Uncontrolled Fire Edge  
— Other Roads  
= Highways

0 0.2 0.4 0.8 1.2 1.6 Miles

N