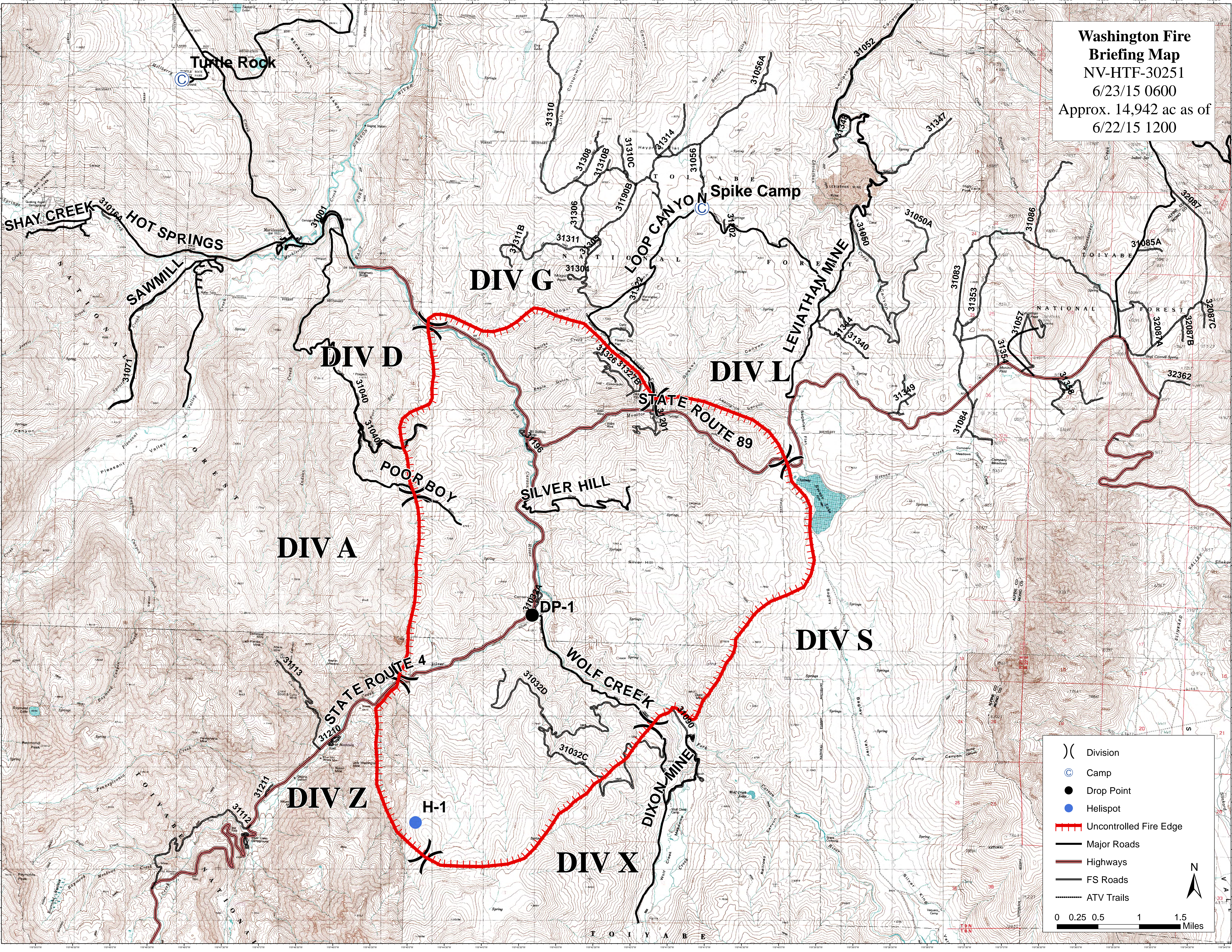


Washington Fire
Briefing Map
NV-HTF-30251
6/23/15 0600
Approx. 14,942 ac as of
6/22/15 1200



Turnle Rock

Spike Camp

DIV G

DIV D

DIV L

DIV A

DIV S

DIV Z

DIV X

SHAY CREEK

SAWMILL

POOR BOY

SILVER HILL

WOLF CREEK

DIXON MINE

LEVIATHAN MINE

STATE ROUTE 89

STATE ROUTE 4

H-1

DP-1

Legend:

- () Division
- ⊙ Camp
- Drop Point
- Helispot
- Uncontrolled Fire Edge
- Major Roads
- Highways
- FS Roads
- ATV Trails

Scale: 0 0.25 0.5 1 1.5 Miles

North Arrow